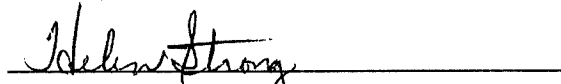


CERTIFICATION OF RESOLUTION NO. 2009-10

I certify I am the duly qualified City Clerk of the City of Barbourville, Kentucky, and the foregoing one page of Resolution No. 2009-10 is a true and complete copy duly adopted by the City Council at a duly convened meeting held on June 4, 2009, all as appears in the official records of the City of Barbourville.

WITNESS, my hand this 4<sup>th</sup> day of June 2009.



Helen Strong, City Clerk

City of Barbourville

City Seal

RECEIVED AND FILED  
DATE Sept. 1, 2009  
\_\_\_\_\_  
TREY GRAYSON  
SECRETARY OF STATE  
COMMONWEALTH OF KENTUCKY  
BY Handie Edkins

**A RESOLUTION ADOPTING A MODERN AND ACCURATE LEGAL DESCRIPTION  
OF TERRITORY PREVIOUSLY ANNEXED BY ORDINANCE**

**RESOLUTION NO. 2009-10**

**WHEREAS**, the City of Barbourville has enacted numerous ordinances annexing property into the corporate limits of the City of Barbourville; and

**WHEREAS**, each individual annexation contains a prior survey prepared by now unknown individual, and further references documentation that is no longer in existence; and

**WHEREAS**, the City wishes to provide a modern, accurate, easily identifiable legal description reflecting bearings and coordinates based upon the state plane coordinate system, including relevant GPS and GIS data, same having being certified by a professional land surveyor for each prior annexation; and

**WHEREAS**, the City wishes to comply with the requirements of Amended KRS 81A.4 70 effective July 13, 2004; and


**WHEREAS**, the City does not intend to amend or replace its prior ordinance annexing, but rather to interpret the defined boundaries of the territory previously annexed and adopt a modern and accurate legal description of territory previously annexed.

**NOW THEREFORE, BE IT RESOLVED BY THE CITY COUNCIL OF THE CITY OF BARBOURVILLE, KENTUCKY;**

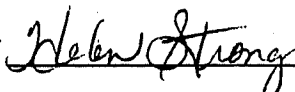
**SECTION 1.** That the City Council of the City of Barbourville hereby adopts the following legal descriptions, and plats attached hereto as prepared by Richard Frederick, Licensed Professional Land Surveyor No. 3051 by new survey as an accurate depiction of the property previously annexed into the corporate city limits of the City of Barbourville by Ordinance No. 1998-9 dated October 1, 1998 a copy attached hereto as exhibit "2", and hereby adopts said new legal description and plat as the official legal description and plat to be adopted by the City for all purposes when referencing this prior annexation.

**SECTION 2.** This new legal description as prepared by Richard Frederick, a Licensed Professional Land Surveyor No. 3051 is attached.

This Resolution is adopted and approved by the City Council of Barbourville, Kentucky on this the 4th day of June 2009.

  
\_\_\_\_\_  
David Thompson, Mayor

Attest:

  
\_\_\_\_\_  
Helen Strong, City Clerk

# APEX LAND SURVEYS

P.O. Box 1169

Barbourville, Kentucky 40906

## CITY OF BARBOURVILLE, KENTUCKY ANNEXATION ORDINANCE NO. 1998-9

The following is a description for a tract or parcel of land as described in Annexation Ordinance No.1998-9 for the City of Barbourville. The bearings and distances are based on the deed of record for the included parcel, and any errors in closure were ignored and last call was made to close the area. Any overlaps with previous annexations will be adjusted to make each parcel match to any adjacent city boundaries or newly submitted annexations. No surveying was performed and this does not constitute a boundary survey or in anyway reflect a determination of individual owners boundaries and should not be used for that purpose.

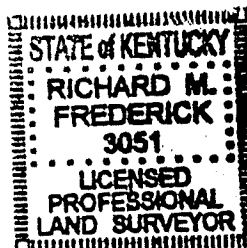
Beginning at a point on the east side right-of-way of Petersburg Road, GIS coordinates (N 1835079.88, E 2190072.88); thence leaving the right-of-way, S 49°43'59" E, 214.25' to a point; thence, N 40°50'42" E, 367.79' to a point; thence, S 58°11'40" E, 101.55' to a point; thence, S 57°16'32" E, 184.48' to a point; thence, S 52°39'36" E, 231.08' to a point; thence, S 51°23'24" E, 102.42' to a point; thence, S 49°14'55" E, 197.39' to a point; thence, S 54°22'29" E, 109.48' to a point; thence, S 34°53'10" W, 103.37' to a point; thence, S 34°58'16" W, 128.03' to a point; thence, S 35°12'14" W, 103.94' to a point; thence, S 39°07'01" W, 434.69' to a point; thence, S 38°44'32" W, 351.54' to a point; thence, S 39°03'22" W, 163.26' to a point; thence, N 36°13'03" W, 207.80' to a point; thence, N 36°08'17" W, 302.25' to a point; thence, N 35°50'20" W, 162.15' to a point; thence, N 36°42'18" W, 207.13' to a point; thence, N 31°19'19" W, 21.83' to a point; thence, S 42°49'39" W, 184.96' to a point; thence, S 43°15'14" W, 57.72' to a point; thence, S 47°45'15" W, 146.85' to a point; thence, N 35°59'28" W, 126.00' to a point; thence, N 38°28'58" E, 68.86' to a point; thence, N 44°01'42" E, 117.64' to a point; thence, N 43°39'50" E, 110.48' to a point; thence, N 41°43'05" E, 91.26' to a point; thence, N 37°41'41" W, 71.55' to a point; thence, N 34°00'34" W, 53.74' to a point; thence, N 48°22'26" W, 139.80' to a point on right-of-way; thence, N 69°07'04" E, 93.84' to a point; thence, N 58°01'35" E, 48.66' to a point; thence, N 46°19'23" E, 103.66' to a point; thence, N 42°08'08" E, 348.28' to the point of beginning. Containing 29.611 acres more or less, according to recorded documents contained in Ordinance No.1998-9.

Prepared by,

*Richard M. Frederick*

Richard Frederick, PLS No.3051

5-5-09

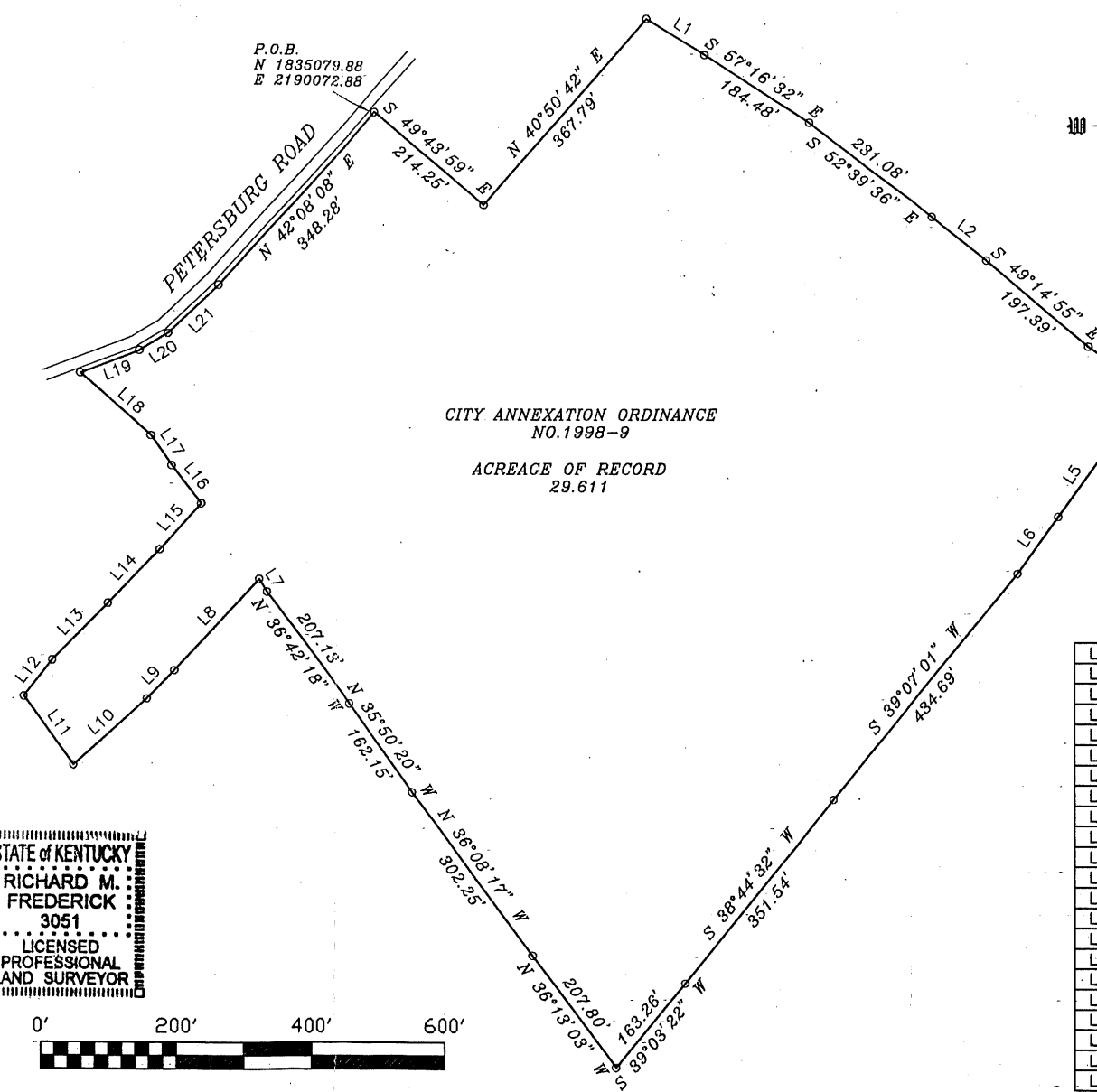


**NOTE:**

The bearings and distances shown hereon are based on deeds of record for the included parcels, and any errors in closure adjusted to close the boundary. Any overlaps with previous Annexations will be adjusted to make each parcel match to any adjacent city boundaries or newly submitted annexations. No surveying was performed.

Point of Beginning (P.O.B.) has been provided with GIS coordinates based on KY State Plane South Zone.

Acreage is based on documents provided in ordinance.

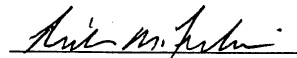


 EXISTING BARBOURVILLE CITY LIMITS  
(Based on information supplied by city)

**SURVEYORS CERTIFICATION**

I CERTIFY THAT THE BOUNDARY OF THE "PRIOR CONSENT FOR ANNEXATION" ORDINANCE NO.1998-9 FOR THE CITY OF BARBOURVILLE, KENTUCKY AS SHOWN ON THIS PLAT IS BASED ON THE INFORMATION CONTAINED IN STATED ORDINANCE (ie: Deed for Parcel, Deed BK.298, pg.7

THE PURPOSE OF THE THIS PLAT AND THE BOUNDARY SHOWN HEREON IS TO DELINEATE THE LIMITS OF THE AFORESAID ANNEXATION. IT DOES NOT CONSTITUTE A BOUNDARY SURVEY OR IN ANYWAY REFLECT A DETERMINATION OF INDIVIDUAL OWNERS BOUNDARIES AND SHOULD NOT BE USED FOR THAT PURPOSE.

  
RICHARD M. FREDERICK, KY PLS. NO.3051      5-7-2009      DATE

STATE OF KENTUCKY  
RICHARD M. FREDERICK  
3051  
LICENSED PROFESSIONAL LAND SURVEYOR



|     |
|-----|
| L11 |
| L12 |
| L13 |
| L14 |
| L15 |
| L16 |
| L17 |
| L18 |
| L19 |
| L20 |
| L21 |
| L1  |
| L2  |
| L3  |
| L4  |
| L5  |
| L6  |
| L7  |
| L8  |
| L9  |
| L10 |
| L11 |
| L12 |
| L13 |
| L14 |
| L15 |
| L16 |
| L17 |
| L18 |
| L19 |
| L20 |
| L21 |

SURVEY DATES: \_\_\_\_\_ REVISION DATES: \_\_\_\_\_  
DRAWING DATES: 5-05-2009  
SCALE: 1" = 200'  
TITLE SOURCE: AS SHOWN

PREPARED BY:  
**APEX**  
LAND SURVEYS  
P.O. BOX 1169  
BARBOURVILLE, KY. 40906  
(606) 546-3889  
RICHARD FREDERICK, LS

PREPARED FOR:  
**CITY OF BARBOURVILLE**  
196 DANIEL BOONE DRIVE  
BARBOURVILLE, KENTUCKY 40906

PROJECT:  
**ANNEXATION**  
19