

OLD KENTUCKY HOME
DOORWAY

City of Bardstown

WILLIAM S. SHECKLES, MAYOR
220 N. 5TH ST.
BARDSTOWN, KENTUCKY 40004
TEL. NO. 877/348-5947
FAX. NO. 502/348-2433




ART TREASURES IN
ST. JOSEPH CATHEDRAL

CERTIFICATION

I, Bobbe Blincoe, hereby certify that I am the duly qualified City Clerk of the City of Bardstown, Kentucky and the foregoing 2 pages of Ordinance No. 460 is a true, correct and complete copy duly adopted by the City Council at a duly convened meeting held on 1/8/1991, all as appears in the official records of said City.

WITNESS, my hand and Seal of the City, this 12th day of December, 2011.



Bobbe Blincoe
City Clerk of Bardstown

SEAL

RECEIVED AND FILED
DATE December 16, 2011

ELAINE N. WALKER
SECRETARY OF STATE
COMMONWEALTH OF KENTUCKY
BY Handie Adkinson

AN ORDINANCE ANNEXING TO THE CITY OF BARDSTOWN, KENTUCKY, A CERTAIN TRACT OF LAND IN NELSON COUNTY, KENTUCKY, BEING IN THE NORTH LIMITS OF THE PRESENT BOUNDARY LINES OF SAID CITY.

WHEREAS, the City Council has expressed its desire and intent to annex certain unincorporated territory located in Nelson County, Kentucky, herein called the "Annexation Area" to the City; and

WHEREAS, the owners, in fee simple, through a written document, have pursuant to KRS 81A.500, requested annexation by the City of the unincorporated "Annexation Area", which is more fully described below;

NOW, THEREFORE BE IT ORDAINED BY THE CITY COUNCIL OF BARDSTOWN, KENTUCKY:

The present boundaries of the City of Bardstown, Kentucky, are hereby extended to include within said City a certain tract of land located in the north limits of the City of Bardstown, the boundaries of which is defined and described as follows:

Beginning at an iron pin and R/W marker, 75 feet from the center of the road, corner to Inoac USA; thence leaving the road with Inoac N 40-04-18 E 790.85 feet to an iron pin, corner to Inoac, in the south line of BIDD; thence with BIDD N 79-20-28 E 126.99 feet to an iron pin corner to BIDD and 40 feet from the center of the R.J. Corman Railroad; thence with the West R/W line of said Railroad S 10-33-15 E 150.35 ft. (chord); thence S 11-33-46 E 456.30 ft. (chord) to a point 40 ft. from the center of the Railroad; thence N 77-40-43 E 10.00 feet to point, 30 ft. from the center of the Railroad; thence with the West R/W line of the Railroad S 12-55-47 E 365.55 ft. (chord) to a point 30 ft. from the center of the Railroad; thence S 14-52-32 E 20.39 ft. to an iron pin, 30 ft. from the center of the Railroad and 105.41 ft. from the center of KY Highway 245; thence crossing KY Highway 245 S 12-55-47 E 245 ft. to a point in the South Right of Way line of KY Highway 245, corner to the West Right of Way line of the Railroad, being also a point in the existing City limit line; thence with the City limit line in the division line of the John Rowan Industrial Park and the South Right of Way line of KY Highway 245, N 60-31-10 W 235.87 ft. to an iron pin; thence N 66-38-17 W 200.20 ft. to an iron pin; thence N 66-35-47 W 199.14 ft to an iron pin; thence N 44-58-19 W 327.28 ft to a point; thence striking a line perpendicular to the center line of KY Highway 245, approximately 170 ft. to the point of the beginning containing approximately 13.68 acres.

This ordinance shall take effect from and after its passage and publication as required by law.

CITY OF BARDSTOWN

Charles J. Brauch
Charles J. Brauch
Mayor

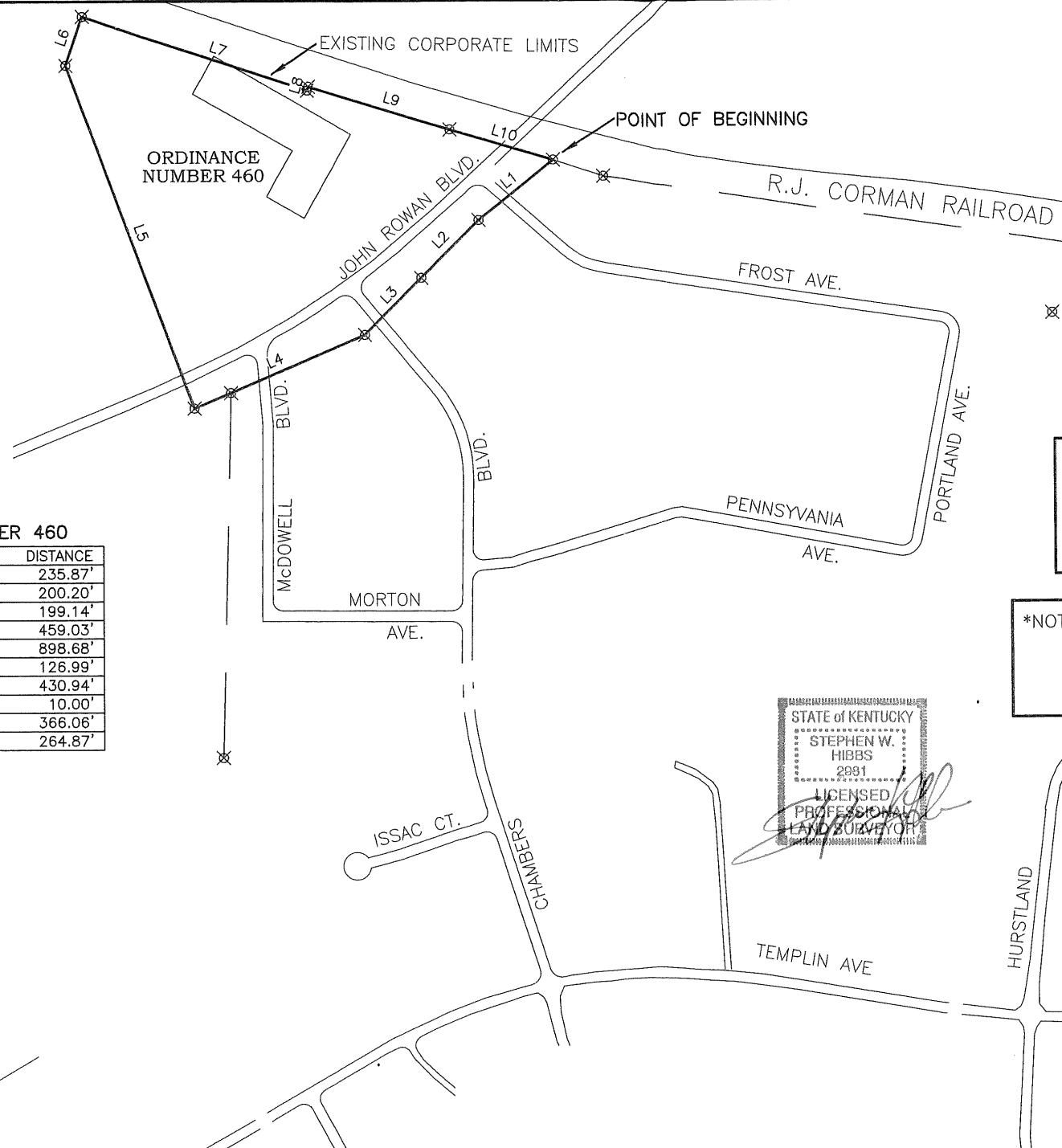
ATTEST:

Lonnie G. Parrott
Lonnie G. Parrott
City Clerk

Dated: 1-8-91

ORDINANCE NUMBER 460

LINE	BEARING	DISTANCE
L1	N 68°22'14" W	235.87'
L2	N 74°29'21" W	200.20'
L3	N 74°26'51" W	199.14'
L4	N 52°49'23" W	459.03'
L5	N 40°04'18" E	898.68'
L6	N 79°20'28" E	126.99'
L7	S 11°41'10" E	430.94'
L8	N 77°40'43" E	10.00'
L9	S 12°55'47" E	366.06'
L10	S 13°04'46" E	264.87'



NOTE: DATA FROM THE FOLLOWING SOURCES WERE USED IN PREPARATION OF THIS PLAT:

- BARDSTOWN CITY MAP
- NELSON COUNTY PVA RECORDS
- AERIAL PHOTOGRAPHY

***NOTE: THE PURPOSE OF THIS PLAT IS TO SHOW THE AREA ENCOMPASSED BY THE BOUNDARY SURVEY AND FOR INFORMATIONAL PURPOSES ONLY.**

STATE OF KENTUCKY
STEPHEN W. HIBBS
2001
LICENSED PROFESSIONAL LAND SURVEYOR

ANNEX

CITY OF BARDSTOWN
220 NORTH BARDSTOWN, KY 40004

ORDINANCE NUMBER 460

HE HIBBS ENGINEERS
540 OLD BARDSTOWN RD.
P. O. BOX 100
BARDSTOWN, KY 40004
PHONE: (502)-348-0100
EMAIL - shj@hibbs.com
SCALE: 1"=300' / 1"=300'

DRAWING FILE: BARDSTOWN A
COORDINATE FILE: