

OLD KENTUCKY HOME
DOORWAY

City of Bardstown

WILLIAM S. SHECKLES, MAYOR
220 N. 5TH ST.
BARDSTOWN, KENTUCKY 40004
TEL. NO. 877/348-5947
FAX. NO. 502/348-2433




ART TREASURES IN
ST. JOSEPH CATHEDRAL

CERTIFICATION

I, Bobbe Blincoe, hereby certify that I am the duly qualified City Clerk of the City of Bardstown, Kentucky and the foregoing 2 pages of Ordinance No. 481 is a true, correct and complete copy duly adopted by the City Council at a duly convened meeting held on 9/10/1991, all as appears in the official records of said City.

WITNESS, my hand and Seal of the City, this 12th day of December, 2011.



Bobbe Blincoe
City Clerk of Bardstown

SEAL

RECEIVED AND FILED
DATE December 16, 2011

ELAINE N. WALKER
SECRETARY OF STATE
COMMONWEALTH OF KENTUCKY
BY Handie Adkins

ORDINANCE NO. 481

AN ORDINANCE ANNEXING CERTAIN REAL ESTATE TO THE CITY OF BARDSTOWN.

WHEREAS, heretofore an ordinance was passed by the City Council of the City of Bardstown, Kentucky, found in Minute Book 16, page 580, at a meeting held on April 9, 1991, proposing to annex certain real estate to the City of Bardstown, which lands are hereinafter described, and

WHEREAS, said ordinance was given the required two readings and was published as required by law on May 20, 1991, and 60 days have passed after the enactment and publication of said ordinance, and

WHEREAS, no petition has been received by the Mayor in opposition to the proposal to annex within the 60 day period following publication.

NOW THEREFORE, the Board of Council of the City of Bardstown, Kentucky, does ordain as follows:

That the territory hereinafter described be and the same is hereby annexed to the City of Bardstown and made a part of the City of Bardstown and placed within the corporate limits of the said City of Bardstown and the property so annexed is bounded and described as follows:


A tract of land located near the northwest limits of the City of Bardstown and along KY 245 approximately 1670 feet west of US 31E and more particularly described as follows:

Beginning at a point in the west line of Kelly Drive at its intersection with the north line of KY Highway 245, said point being in the existing city limit line thence striking a new city limit line running along the north line of KY Highway 245 N 61-56-28 W 315.72 feet; thence N 75-32-16 W 398.75 feet; thence leaving KY Highway 245 and running with the east line of Corman Railroad in the line with Jideco of Bardstown 30 feet from and parallel to the centerline of the railway N 13-44-24 W 50.26 feet; thence continuing N 12-55-47 W (chord) 364.36 feet; thence N 77-40-43 E 10.00 feet; thence proceeding parallel to railway 40 feet from centerline N 11-33-45 W (chord) 454.17 feet; thence N 10-47-07 W (chord) 224.62 feet; thence N 09-33-00 W (chord) 322.49 feet; thence continuing with Corman Railroad and Wenco of Kentucky N 06-17-00 W (chord) 355.65 feet; thence S 85-30-24 W 10.00 feet; thence proceeding parallel to railway 30 feet from centerline N 03-04-06 W (chord) 283.48 feet; thence N 01-45-36 W 81.78 feet to corner of Wenco in the south line of Withrow Court; thence running with the south line of Withrow Court crossing Corman Railroad N 80 degrees W 60 feet to corner of City of Bardstown (water tank tract); thence continuing with south line 30 feet from the center of Withrow Court and with the City of Bardstown N 79-19-50 W 150.12 feet; thence continuing with the south line of Withrow Court and Trim Masters, Inc. N 79-46-44 W 89.21 feet; thence N 81-22-23 W 99.99 feet; thence N 85-27-27 W 99.99 feet; thence N 89-32-32 W 99.99 feet; thence N 89-

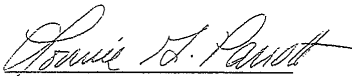
48-12 W 77.63 feet; thence proceeding with the east line of Nutter Drive 30 feet from and parallel to the center of road and continuing with Trim Masters, Inc. property line S 07-58-24 E 816.99 feet; thence running in the division line between Trim Masters, Inc. and Inoac USA, Inc. S 49-55-42 E 648.60 feet to corner with National Magnetics and in existing city limit line; thence running with division line between National Magnetics and Trim Masters, Inc. N 79-20-28 E 126.99 feet to west line of Corman Railroad said point being 40 feet from center of railway; thence continuing with the existing city limit line and running parallel to the west line of Corman Railroad and the property line of National Magnetics S 10-33-15 E (chord) 150.35 feet; thence S 11-33-46 E (chord) 456.30 feet; thence N 77-40-43 E 10.00 feet to a point 30 feet from center of railway; thence S 12-55-47 E (chord) 365.55 feet; thence S 14-52-32 E 20.39 feet to north line of KY Highway 245, said point being 105.41 feet from center of highway and southeast corner of National Magnetics; thence crossing KY Highway 245 and continuing with the west line of Corman Railroad S 12-55-47 E 245 feet to northeast corner of John Rowan Light Industrial Park (Carey & Chowning, Inc.); thence continuing with west line of Corman Railroad and John Rowan Light Industrial Park S 11-15-10 E 87.15 feet; thence S 11-41-19 E 100.52 feet; thence S 12-11-19 E 100.52 feet; thence S 12-41-19 E 100.52 feet; thence S 13-11-19 E 100.52 feet; thence S 13-41-19 E 248 feet; thence S 12-41-09 E 99.71 feet; thence S 12-26-19 E 99.74 feet; thence S 12-11-19 E 99.74 feet; thence S 11-56-19 E 99.74 feet; thence S 11-41-20 E 164.88 feet; thence continuing with west line of Corman Railroad and Hoffman property line S 21-15 E 930 feet; thence crossing Corman Railroad with the existing city limit line N 78-45 E 60 feet; thence continuing with the east line of Corman Railroad and city limit line N 21-15 W 2215 feet to a point in the south line of KY Highway 245; thence running with the south line of KY Highway 245 S 78-10 E 320 feet; thence N 88-45 E 190 feet, thence S 76-15 E 80 feet; thence crossing KY Highway 245 with existing city limit line N 23-45 E 140 feet to the point of the beginning containing approximately 22 acres.

This ordinance shall be in full force and effect upon its final passage and publication as required by law.

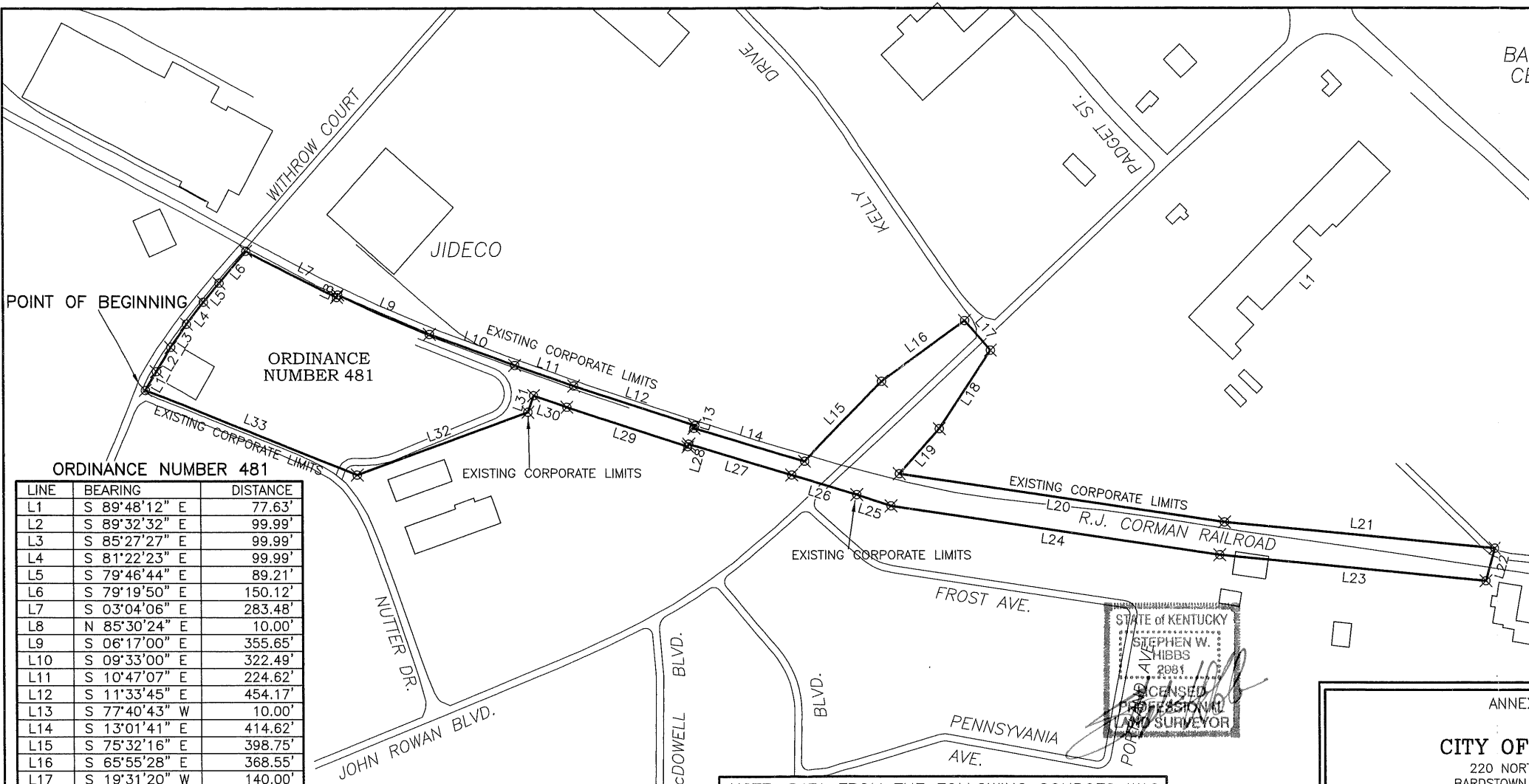
CITY OF BARDSTOWN


Charles J. Brauch
Mayor

ATTEST:


Lonnie G. Parrott
City Clerk

Dated: 9-10-91

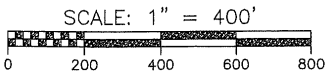


| LINE | BEARING | DISTANCE |
|------|---------------|----------|
| L1 | S 89°48'12" E | 77.63' |
| L2 | S 89°32'32" E | 99.99' |
| L3 | S 85°27'27" E | 99.99' |
| L4 | S 81°22'23" E | 99.99' |
| L5 | S 79°46'44" E | 89.21' |
| L6 | S 79°19'50" E | 150.12' |
| L7 | S 03°04'06" E | 283.48' |
| L8 | N 85°30'24" E | 10.00' |
| L9 | S 06°17'00" E | 355.65' |
| L10 | S 09°33'00" E | 322.49' |
| L11 | S 10°47'07" E | 224.62' |
| L12 | S 11°33'45" E | 454.17' |
| L13 | S 77°40'43" W | 10.00' |
| L14 | S 13°01'41" E | 414.62' |
| L15 | S 75°32'16" E | 398.75' |
| L16 | S 65°55'28" E | 368.55' |
| L17 | S 19°31'20" W | 140.00' |
| L18 | N 86°29'50" W | 335.76' |
| L19 | N 78°10'00" W | 215.55' |
| L20 | S 21°17'24" E | 1172.10' |
| L21 | S 24°12'21" E | 965.37' |
| L22 | S 75°48'51" W | 120.59' |
| L23 | N 24°11'09" W | 950.42' |
| L24 | N 21°17'24" W | 1185.04' |
| L25 | N 11°15'10" W | 128.03' |
| L26 | N 12°55'47" W | 245.00' |
| L27 | N 13°01'57" W | 385.93' |
| L28 | S 77°40'43" W | 10.00' |
| L29 | N 11°33'45" W | 454.17' |
| L30 | N 10°47'07" W | 126.02' |
| L31 | S 79°20'28" W | 62.84' |
| L32 | N 49°55'42" W | 648.60' |
| L33 | N 07°58'24" W | 816.99' |

NOTE: DATA FROM THE FOLLOWING SOURCES WAS USED IN PREPARATION OF THIS PLAT:

- BARDSTOWN CITY MAP
- NELSON COUNTY PVA RECORDS
- AERIAL PHOTOGRAPHY

*NOTE: THE PURPOSE OF THIS PLAT IS TO DELINEATE THE AREA ENCOMPASSED BY THIS ANNEXATION. THIS PLAT DOES NOT REPRESENT AN ACTUAL BOUNDARY SURVEY AND SHOULD BE USED FOR INFORMATIONAL PURPOSES ONLY.



STATE OF KENTUCKY
 STEPHEN W. HIBBS
 N. 2081
 LICENSED PROFESSIONAL LAND SURVEYOR

ANNEX
CITY OF
 220 NORTH
 BARDSTOWN,
 ORDINANCE NUMBE
HE HIBBS ET
 540 OLD BL
 P. O.
 BARDSTOWN, KE
 PHONE: (502)-348-03
 EMAIL - shj@h
 SCALE: 1"=400' /
 DRAWING FILE: BARDSTOWN A
 COORDINATE FILE: