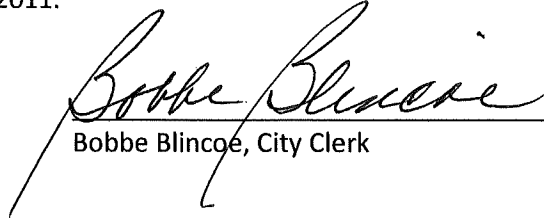


**CERTIFICATION**

I, Bobbe Blincoe, Clerk of the City of Bardstown, do hereby certify that the above Resolution/Municipal Order No. 2011-19 is a true and correct copy as was presented to the City Council of the City of Bardstown and approved at their regular scheduled meeting dated 11/8/2011 .

Given under my hand this 8th day of November , 2011.

  
\_\_\_\_\_  
Bobbe Blincoe, City Clerk

(SEAL)

RECEIVED AND FILED  
DATE December 16, 2011  
\_\_\_\_\_  
ELAINE N. WALKER  
SECRETARY OF STATE  
COMMONWEALTH OF KENTUCKY  
BY Hardie Adkins

**RESOLUTION/MUNICIPAL ORDER NO. 2011-19**

**A RESOLUTION ADOPTING A MODERN AND ACCURATE LEGAL DESCRIPTION OF TERRITORY PREVIOUSLY ANNEXED BY ORDINANCE.**

WHEREAS, the City of Bardstown has enacted numerous ordinances annexing property into the corporate limits of the City of Bardstown; and

WHEREAS, each individual annexation contains a prior survey oft prepared by now unknown individual, and further references documentation that is no longer in existence; and

WHEREAS, the City wishes to provide a modern, accurate, easily identifiable legal description reflecting bearings and coordinates based upon the state plane coordinate system, including relevant GPS and GIS data, same having been certified by a professional land surveyor for each prior annexation; and

WHEREAS, The City wishes to comply with the requirements of Amended KRS 81A.470 effective July 13, 2004; and

WHEREAS, the City does not intend to amend or replace its prior ordinance annexing, but rather to interpret the defined boundaries of the territory previously annexed and adopt a modern and accurate legal description of territory previously annexed.

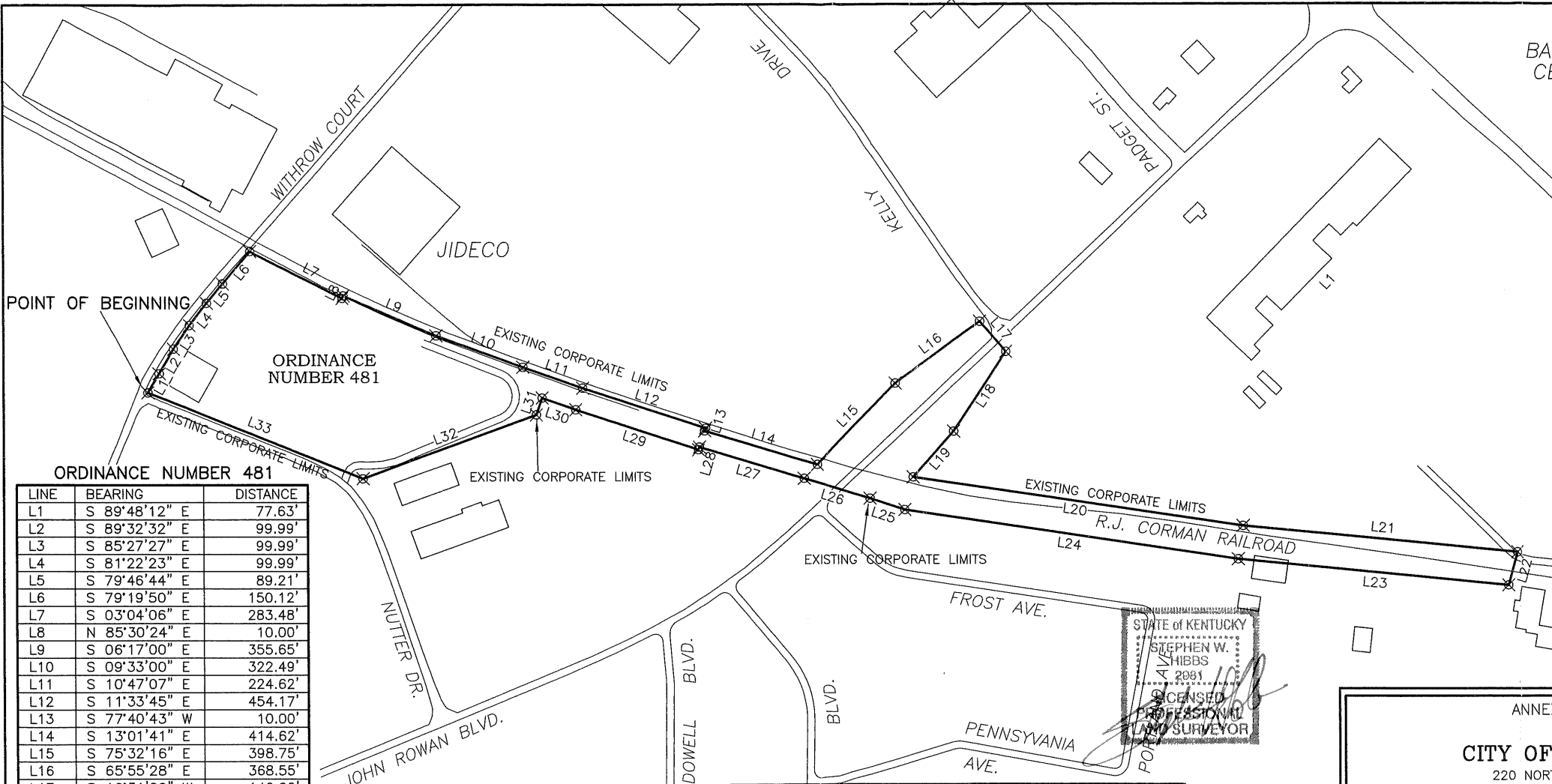
NOW, THEREFORE, BE IT RESOLVED BY THE CITY COUNCIL OF THE CITY OF BARDSTOWN, KENTUCKY:

SECTION 1. That the City Council of the City of Bardstown hereby adopts the following legal description and a plat attached hereto as prepared by Stephen Hibbs, Licensed Professional Land Surveyor No. 2981 by new survey as an accurate depiction of the property previously annexed into the corporate city limits of the City of Bardstown by Ordinance 481 dated 9-10-1991, a copy of which is attached hereto as Exhibit "2", and hereby adopts said new legal description and plat as the official legal description and plat to be adopted by the City for all purposes when referencing this prior annexation.

SECTION 2. This new legal description as prepared by Stephen Hibbs a Licensed Professional Land Surveyor No. 2981 is as follows:

City of Bardstown  
Ordinance #481

Beginning at a point, at the southeast corner of the intersection of Nutter Drive and Withrow Court; thence with Withrow Court S 89-48-12 E 77.63 ft; S 89-32-32 E 99.99 ft.; S 85-27-27 E 99.99 ft.; S 81-22-23 E 99.99 ft.; S 79-46-44 E 89.21 ft.; S 79-19-50 E 150.12 ft. to a point in the south line of Withrow Court and the west line of the railroad; thence with the railroad S 03-04-06 E 283.48 ft.; N 85-30-24 E 10.00 ft.; S 06-17-00 E 355.65 ft.; S 09-33-00 E 322.49 ft.; S 10-47-07 E 224.62 ft.; S 11-33-45 E 454.17 ft.; S 77-40-43 W 10.00 ft.; S 13-01-41 E 414.62 ft. to a point on the west line of the railroad and the north line of John Rowan Blvd; thence with the north line of John Rowan Blvd. S 75-32-16 E 398.75 ft.; S 65-55-28 E 368.55 ft., to a point, on the north line of John Rowan Blvd. and the west line of Kelly Drive; thence crossing John Rowan Blvd. S 19-31-20 W 140.00 ft. to a point on the south line of John Rowan Blvd; thence with the south line of John Rowan Blvd. N 86-29-50 W 335.76 ft.; N 78-10-00 W 215.55 ft., to a point on the south line of John Rowan Blvd. and the east line of the railroad; thence with the east line of the railroad S 21-17-24 E 1172.10 ft.; S 24-12-21 E 965.37 ft. to a point, on the east line of the railroad, near Beechwood Ave.; thence crossing the railroad S 75-48-51 W 120.59 ft. to a point, on the west line of the railroad; thence with the west line of the railroad N 24-11-09 W 950.42 ft.; N 21-17-24 W 1185.04 ft.; N 11-15-10 W 128.03 ft.; thence continuing with the railroad, crossing John Rowan Blvd N 12-55-47 W 245.00 ft.; N 13-01-57 W 385.93 ft.; S 77-40-43 W 10.00 ft.; N 11-33-45 W 454.17 ft.; N 10-47-07 W 126.02 ft. to a point on the west line of the railroad, corner to Trim Master; thence with Trim Master S 79-20-28 W 62.84 ft.; N 49-55-42 W 648.60 ft.; N 07-58-24 W 816.99 ft. to the point of beginning, containing approximately 25.53 acres.

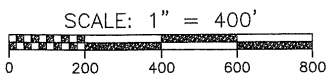


LINE	BEARING	DISTANCE
L1	S 89°48'12" E	77.63'
L2	S 89°32'32" E	99.99'
L3	S 85°27'27" E	99.99'
L4	S 81°22'23" E	99.99'
L5	S 79°46'44" E	89.21'
L6	S 79°19'50" E	150.12'
L7	S 03°04'06" E	283.48'
L8	N 85°30'24" E	10.00'
L9	S 06°17'00" E	355.65'
L10	S 09°33'00" E	322.49'
L11	S 10°47'07" E	224.62'
L12	S 11°33'45" E	454.17'
L13	S 77°40'43" W	10.00'
L14	S 13°01'41" E	414.62'
L15	S 75°32'16" E	398.75'
L16	S 65°55'28" E	368.55'
L17	S 19°31'20" W	140.00'
L18	N 86°29'50" W	335.76'
L19	N 78°10'00" W	215.55'
L20	S 21°17'24" E	1172.10'
L21	S 24°12'21" E	965.37'
L22	S 75°48'51" W	120.59'
L23	N 24°11'09" W	950.42'
L24	N 21°17'24" W	1185.04'
L25	N 11°15'10" W	128.03'
L26	N 12°55'47" W	245.00'
L27	N 13°01'57" W	385.93'
L28	S 77°40'43" W	10.00'
L29	N 11°33'45" W	454.17'
L30	N 10°47'07" W	126.02'
L31	S 79°20'28" W	62.84'
L32	N 49°55'42" W	648.60'
L33	N 07°58'24" W	816.99'

NOTE: DATA FROM THE FOLLOWING SOURCES WAS USED IN PREPARATION OF THIS PLAT:

- BARDSTOWN CITY MAP
- NELSON COUNTY PVA RECORDS
- AERIAL PHOTOGRAPHY

\*NOTE: THE PURPOSE OF THIS PLAT IS TO DELINEATE THE AREA ENCOMPASSED BY THIS ANNEXATION. THIS PLAT DOES NOT REPRESENT AN ACTUAL BOUNDARY SURVEY AND SHOULD BE USED FOR INFORMATIONAL PURPOSES ONLY.



STATE OF KENTUCKY  
 STEPHEN W. HIBBS  
 NOV 2001  
 LICENSED PROFESSIONAL LAND SURVEYOR

ANNEX  
**CITY OF**  
 220 NORTH  
 BARDSTOWN,  
 ORDINANCE NUMBE

**HE HIBBS** ES  
 540 OLD B  
 P. O.  
 BARDSTOWN, KE  
 PHONE: (502)-348-0  
 EMAIL - shj@h  
 SCALE: 1"=400' /

DRAWING FILE: BARDSTOWN A  
 COORDINATE FILE: