

RESOLUTION/MUNICIPAL ORDER NO. 2011-18

A RESOLUTION ADOPTING A MODERN AND ACCURATE LEGAL DESCRIPTION OF TERRITORY PREVIOUSLY ANNEXED BY ORDINANCE.

WHEREAS, the City of Bardstown has enacted numerous ordinances annexing property into the corporate limits of the City of Bardstown; and

WHEREAS, each individual annexation contains a prior survey oft prepared by now unknown individual, and further references documentation that is no longer in existence; and

WHEREAS, the City wishes to provide a modern, accurate, easily identifiable legal description reflecting bearings and coordinates based upon the state plane coordinate system, including relevant GPS and GIS data, same having been certified by a professional land surveyor for each prior annexation; and

WHEREAS, The City wishes to comply with the requirements of Amended KRS 81A.470 effective July 13, 2004; and

WHEREAS, the City does not intend to amend or replace its prior ordinance annexing, but rather to interpret the defined boundaries of the territory previously annexed and adopt a modern and accurate legal description of territory previously annexed.

NOW, THEREFORE, BE IT RESOLVED BY THE CITY COUNCIL OF THE CITY OF BARDSTOWN, KENTUCKY:

SECTION 1. That the City Council of the City of Bardstown hereby adopts the following legal description and a plat attached hereto as prepared by Stephen Hibbs, Licensed Professional Land Surveyor No. 2981 by new survey as an accurate depiction of the property previously annexed into the corporate city limits of the City of Bardstown by Ordinance 468 dated 4-9-1991, a copy of which is attached hereto as Exhibit "2", and hereby adopts said new legal description and plat as the official legal description and plat to be adopted by the City for all purposes when referencing this prior annexation.

SECTION 2. This new legal description as prepared by Stephen Hibbs a Licensed Professional Land Surveyor No. 2981 is as follows:

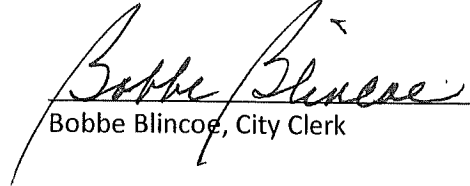
City of Bardstown
Ordinance #468

Beginning at a point, on the south r/w line of Templin Ave., opposite the west line of Westview Subd.; thence with the south line of Templin Ave. N 21-05-26 W 477.58 ft.; N 28-05-26 W 286.50 ft.; thence with a curve to the left, having a radius of 1334.35 ft., N 46-45-15 W 654.47 ft. (chord); thence N 60-09-26 W 276.87 ft. to a point on the south line of Templin Ave.; thence crossing Templin Ave. N 31-38-56 E 60.00 ft.; thence with Lewis (now or formerly), N 43-13-53 E 102.45 ft.; N 27-19-51 W 99.42 ft., to a point, in Monin's line; thence with Monin N 61-41-29 E 743.00 ft. to a point, in Monin's line, corner to Greer (now or formerly); thence with Greer S 45-27-31 E 1024.41 ft.; S 20-06-14 E 887.10 ft. to a point, corner to Greer, in the west line of Westview Subd.; thence with Westview Subd. S 68-18-41 W 455.74 ft.; S 12-35-17 E 11.33 ft.; S 68-19-24 W 263.56 ft. to a point, corner to Westview Subd., on the north line of Templin Ave.; thence crossing Templin Ave. S 68-00-00 W 60.00 ft. to the point of beginning, containing approximately 34.44 acres.

CERTIFICATION

I, Bobbe Blincoe, Clerk of the City of Bardstown, do hereby certify that the above Resolution/Municipal Order No. 2011-18 is a true and correct copy as was presented to the City Council of the City of Bardstown and approved at their regular scheduled meeting dated 9/28/2011 .

Given under my hand this 28th day of September , 2011.


Bobbe Blincoe, City Clerk

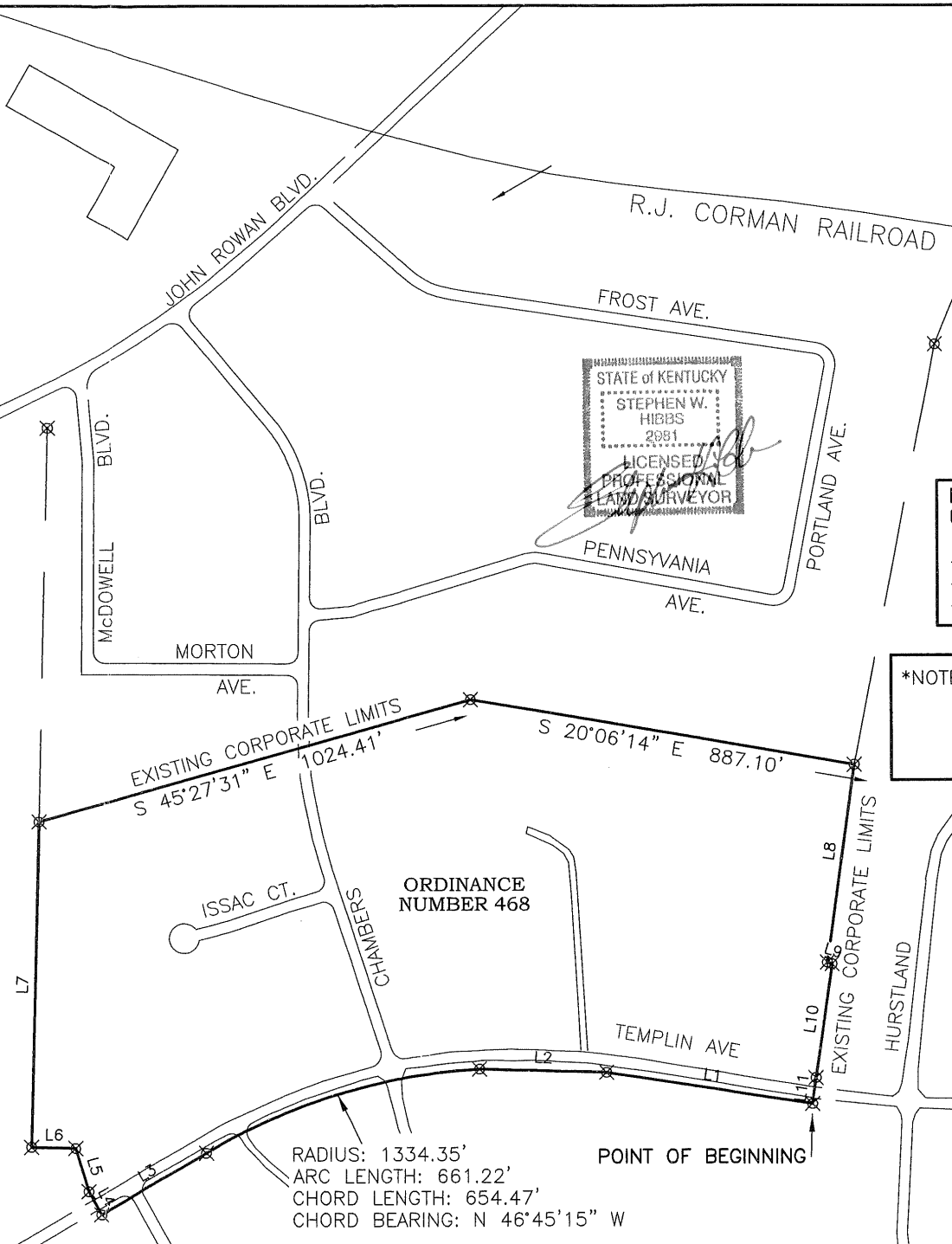
(SEAL)

RECEIVED AND FILED
DATE December 27, 2011

ELAINE N. WALKER
SECRETARY OF STATE
COMMONWEALTH OF KENTUCKY
BY Handwritten Signature

ORDINANCE NUMBER 468

LINE	BEARING	DISTANCE
L1	N 21°05'26" W	477.58'
L2	N 28°05'26" W	286.50'
L3	N 60°09'26" W	276.87'
L4	N 31°38'56" E	60.00'
L5	N 43°13'53" E	102.45'
L6	N 27°19'51" W	99.42'
L7	N 61°41'29" E	743.00'
L8	S 68°18'41" W	455.74'
L9	S 12°35'17" E	11.33'
L10	S 68°19'24" W	263.56'
L11	S 68°00'00" W	60.00'



STATE of KENTUCKY
 STEPHEN W. HIBBS
 2081
 LICENSED PROFESSIONAL
 LAND SURVEYOR



NOTE: DATA FROM THE FOLLOWING SOURCES WERE USED IN PREPARATION OF THIS PLAT:

- BARDSTOWN CITY MAP
- NELSON COUNTY PVA RECORDS
- AERIAL PHOTOGRAPHY

***NOTE:** THE PURPOSE OF THIS PLAT IS TO DEFINE THE AREA ENCOMPASSED BY THE BOUNDARY SURVEY AND FOR INFORMATIONAL PURPOSES ONLY.

ANNEXA

CITY OF BARDSTOWN, KENTUCKY
 220 NORTH BARDSTOWN, KY 40003

ORDINANCE NUMBER 468

HE HIBBS ENGINEERS
 540 OLD BARDSTOWN RD.
 P. O. BOX 100
 BARDSTOWN, KY 40003
 PHONE: (502)-348-0300
 EMAIL - shj@hibbs.com
 SCALE: 1"=300' / D

DRAWING FILE: BARDSTOWN AN
 COORDINATE FILE: