

RECEIVED AND FILED

DATE June 11, 2018

MUNICIPAL ORDER NO. 2018 - 106

ALISON LUNDERGAN GRIMES
SECRETARY OF STATE
COMMONWEALTH OF KENTUCKY
BY Kandice Adkins

MUNICIPAL ORDER RESCINDING MUNICIPAL
ORDER NO. 2018-72 RELATED TO ORDINANCE
NO. BG80-39 AND CORRECTING AN ORIGINAL
KRS 81.045 FILING AND ADOPTING A MODERN
AND ACCURATE LEGAL DESCRIPTION OF
TERRITORY PREVIOUSLY ANNEXED BY
ORDINANCE

WHEREAS, the City of Bowling Green has enacted numerous ordinances annexing property into the corporate limits of the City; and,

WHEREAS, each independent annexation contains a prior survey often prepared by now an unknown individual, and further references documentation that is no longer in existence; and,

WHEREAS, the City approved the modern and accurate legal description at the May 1, 2018 Board of Commissioners meeting by Municipal Order No. 2018-72 and subsequent to the approval it was determined there needed to be additional language referencing a correction to the original KRS 81.045 filing and the requirement to separate the two (2) ordinances included in the municipal order; and,

WHEREAS, the City wishes to provide a modern, accurate, easily identifiable legal description reflecting bearings and distances based upon the state plane coordinate system and as recorded in plat and deed books, including relevant GPS and GIS data, and having been certified by a professional land surveyor for a prior annexation adopted by Ordinance No. BG80-39; and,

WHEREAS, the City wishes to correct its KRS 81.045 filing and comply with the requirements of Amended KRS 81A.470 effective July 13, 2004; and,

WHEREAS, the City does not intend to amend or replace its prior ordinance annexing specified territory, but rather to interpret the defined boundaries of the territory previously annexed and adopt a modern and accurate legal description of territory previously annexed.

NOW, THEREFORE, BE IT ORDERED by the City of Bowling Green, Kentucky as follows:

2018-106

(Municipal Order No. 2018 - 106)

1. The City of Bowling Green hereby rescinds Municipal Order No. 2018-72 which included errors and results in the need for a new Municipal Order.
2. The modern and accurate legal description and plat prepared by a Licensed Professional Land Surveyor for the depiction of territory previously annexed into the corporate limits of the City of Bowling Green by Ordinance No. BG80-39, copies of which are attached to and made a part of this Municipal Order as if copied in full herein, are hereby adopted.
3. The modern and accurate legal description and plat shall be the official legal description and plat for all purposes when referencing the prior annexation.
4. This Municipal Order and the attached documents shall be filed with the Office of the Secretary of State to correct the City's KRS 81.045 filing.
5. This Municipal Order shall be in full force and effect upon signature and recordation.

ADOPTED: June 5, 2018

APPROVED: Brian Wilkerson
Mayor, Chairman of Board of Commissioners

ATTEST: Kate Silbaugh Ward
City Clerk

SPONSORED BY: Jeffery B. Meisel, City Manager, 05/30/2018, 10:00 a.m.

CERTIFICATION

I, the undersigned, do hereby certify that I am the duly qualified and City Clerk of the City of Bowling Green, Kentucky, and as such City Clerk, I further certify that the forgoing is a true, correct and complete copy of a Municipal Order duly enacted by the Board of Commissioners of the City at a duly convened meeting held on June 5, 2018, on the same occasion signed by the Mayor as evidence of approval, and now in full force and effect, all as appears from the official records of the City in my possession and under my control.

Witness my hand of said City as of the 5th day of June, 2018.

Kate Schall Ward
City Clerk

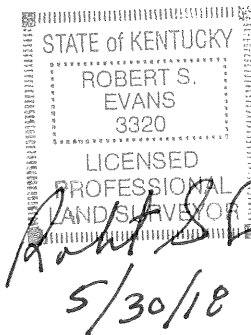
LEGAL DESCRIPTION

CORRECTION BG80-39

Being certain parcel of land bounded by Wakefield Street on the north, Hampton Drive on the east, and Hartland Subdivision to the south and more particularly described as follows:

The following description was prepared by Robert S. Evans PLS # 3320 BG Public Works – Field Engineering. Sources of record Plat Books 2/144, 4/5, 17/107, 20/42, 20/84, 4/1, 4/49, 21/127, 21/126, 22/129, 22/6, 25/21, 27/188, 22/24, 27/185, 27/3, 20/56, 17/180, 25/195, and 22/25 as recorded in the Warren County Court Clerk's Office. BG80-39 as filed in the Bowling Green City Clerk's Office. Bearings are rotated to match the rear line of Plat Book 17 Page 107, S 55°05' W. This description is written counter clockwise to reflect original annexation description. This is not a boundary survey and is for annex purposes only.

Beginning at a point in the existing city limits as of the filing of BG80-39, said point being west boundary of Richland Subdivision PB 4 PG 1 thence crossing across the Potter- Gray School property and with the rear line of Bent Tree Estates Sec. V PB 20 PG 42 and Bent Tree Estates Sec. IV PB 20 PG 84 South 65 degrees 51 minutes 00 seconds West, 1761.36 feet to a point; thence South 59 degrees 31 minutes 51 seconds West, 322.83 feet to a point in the rear line of Edgewood Addition PB 4 PG 5; thence with said line South 55 degrees 16 minutes 24 seconds West, 118.37 feet to a point; thence North 24 degrees 39 minutes 00 seconds West, 20.05 feet to a point; thence South 65 degrees 09 minutes 00 seconds West, 351.67 feet to a point in the northeast right-of-way of Bent Tree Avenue; thence crossing said street South 27 degrees 42 minutes 11 seconds West, 72.14 feet to a point in the southwest right-of-way and common with the rear line of Edgewood Addition PB 2 PG 144; thence with said line South 65 degrees 37 minutes 17 seconds West, 1251.67 feet to a point in the northeast right-of-way of Euclid Drive; thence with said right-of-way South 53 degrees 37 minutes 58 seconds East, 725.90 feet to a point in said right-of-way; thence crossing Euclid Drive South 34 degrees 54 minutes 59 seconds West, 50.00 feet to a point in the rear line of Bent Tree Estates, PB 17PG 107, PB17 PG 180, PB 20 PG 56, PB 21 PG 3, PB22 PG 24, and PB 25 PG 21; thence with said line South 55 degrees 05 minutes 00 seconds East, 1325.00 feet to a point; thence South 55 degrees 03 minutes 00 seconds East, 2171.42 feet to a point common to Bent Tree Estates and Bowling Green- Warren County Airport; thence with the Airport North 26 degrees 56 minutes 44 seconds East, 760.21 feet to a point; thence North 18 degrees 20 minutes 44 seconds East, 919.41 feet to a point in the line of Hampton Heights PB 21 PG 6; thence with Hampton Heights and then Richland Subdivision PB 4 PG 49 and PB 4 PG 1, North 12 degrees 28 minutes 53 seconds West, 2647.80 feet to the point of beginning containing 197.98 acres.



**PURPOSE OF DRAWING IS TO CORRECT FILED ANNEXATIONS BG80-39
SOURCES USED FOR COMPILING DRAWING. PLAT BOOKS 2/144, 4/5, 17/107, 20/42
20/84, 4/1, 4/49, 21/127, 21/126, 22/129, 22/6, 25/21, 27/188, 22/24, 27/185, 27/3, 20/56,
17/180, 25/195, and 22/25. AS RECORDED IN THE WARREN CO. COURT CLERK'S OFFICE.
BG80-39 AS FILED WITH THE BOWLING GREEN CITY CLERK'S OFFICE.
TOATL AREA OF THIS CORRECTION- 197.98 ACRES.
THIS DOES NOT CHANGE THE EXISTING CORPORATE LIMITS.**

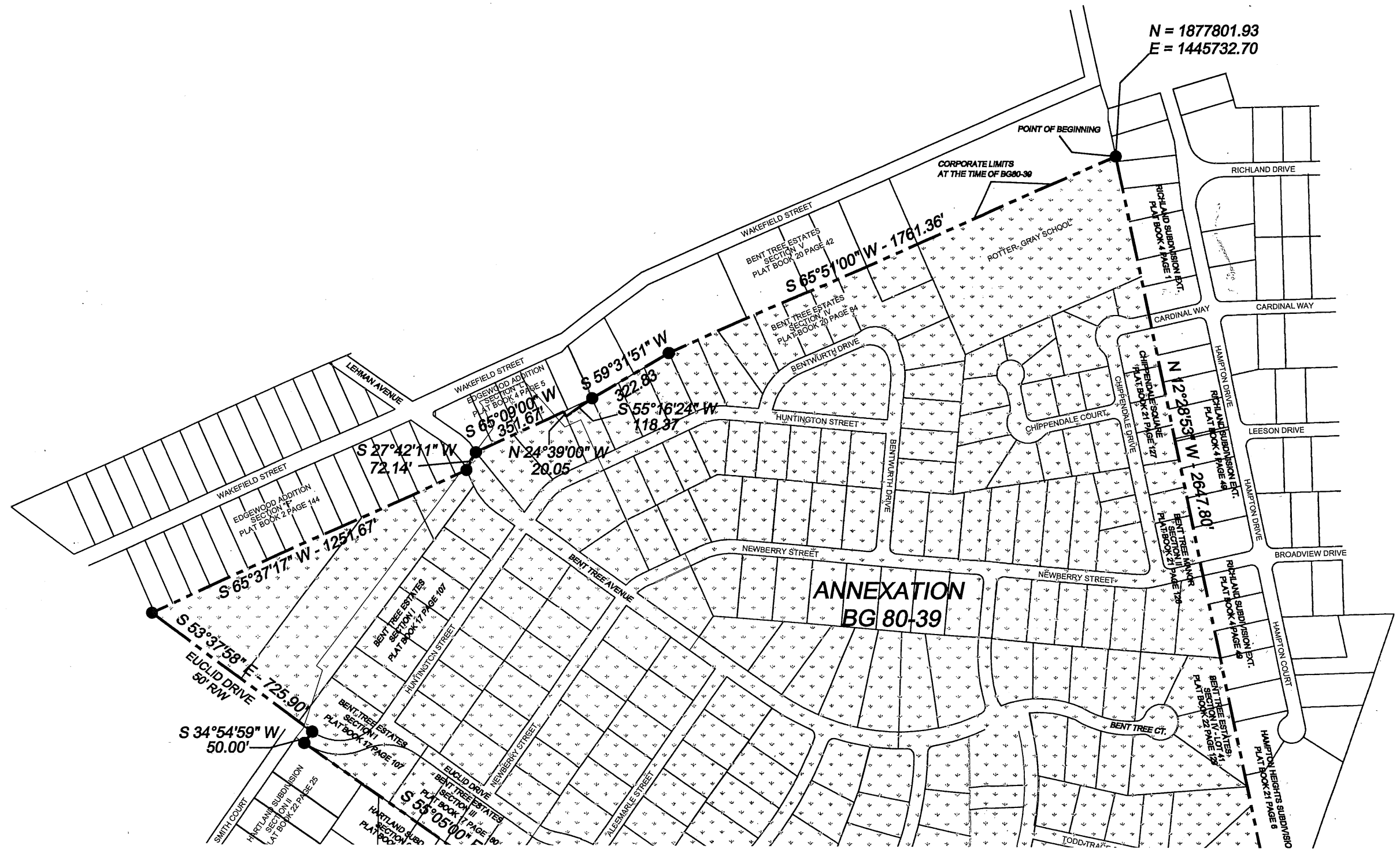
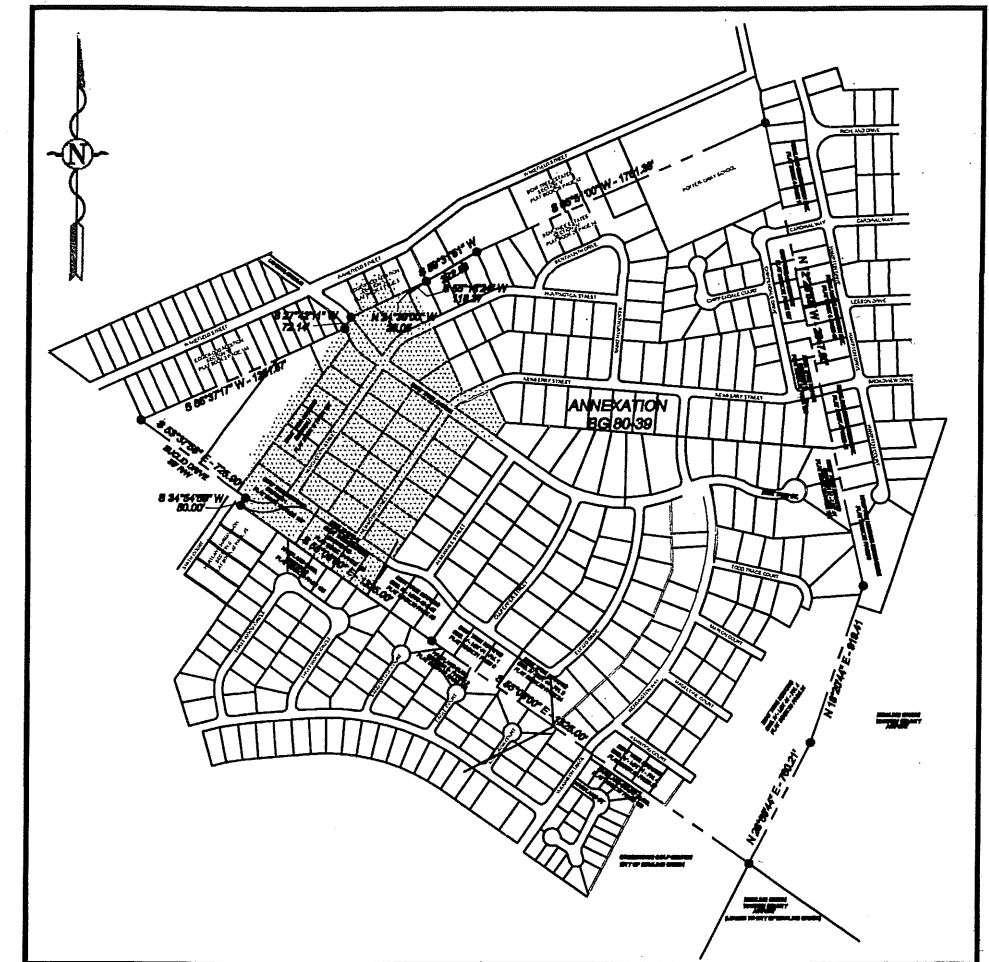
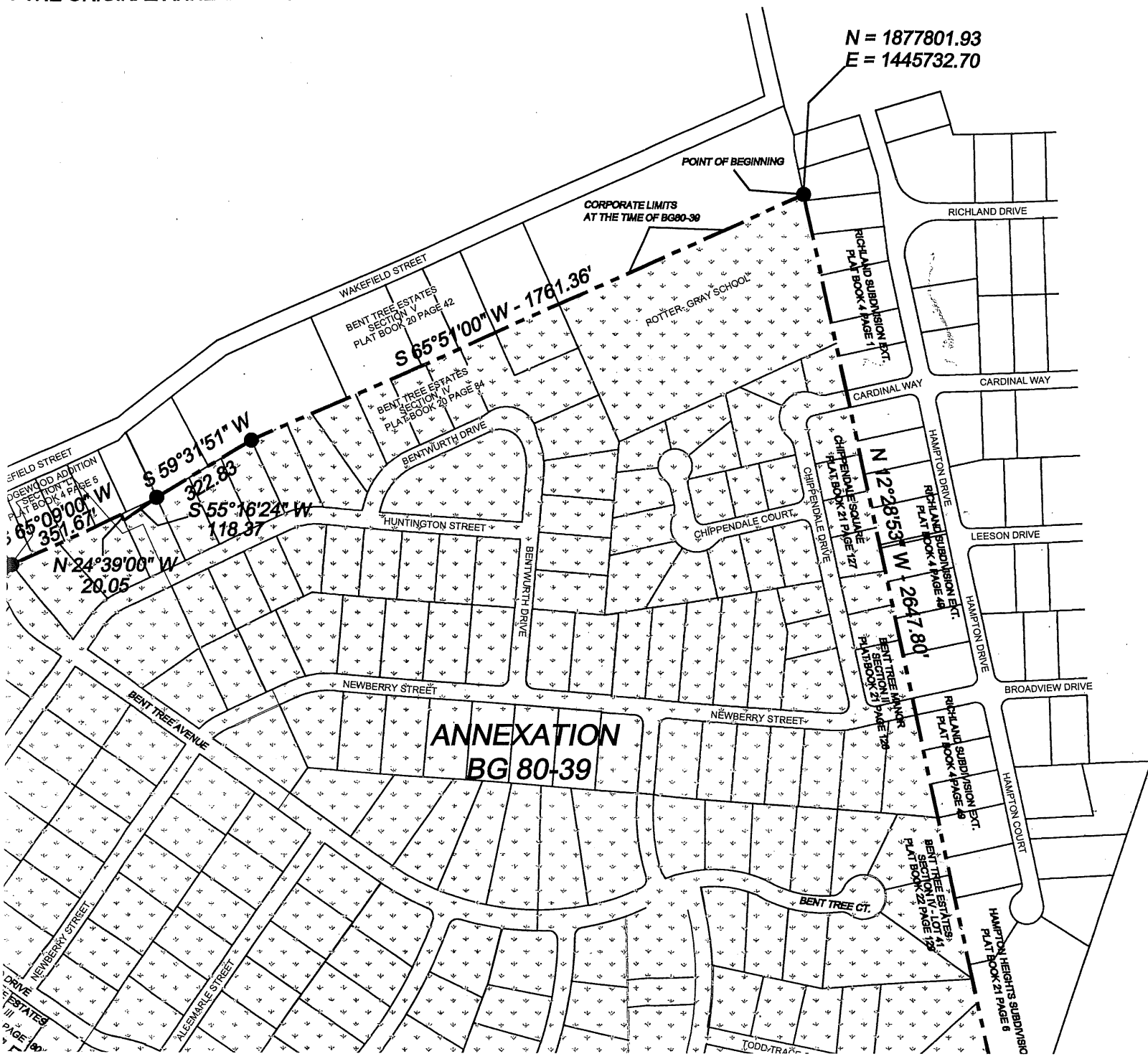
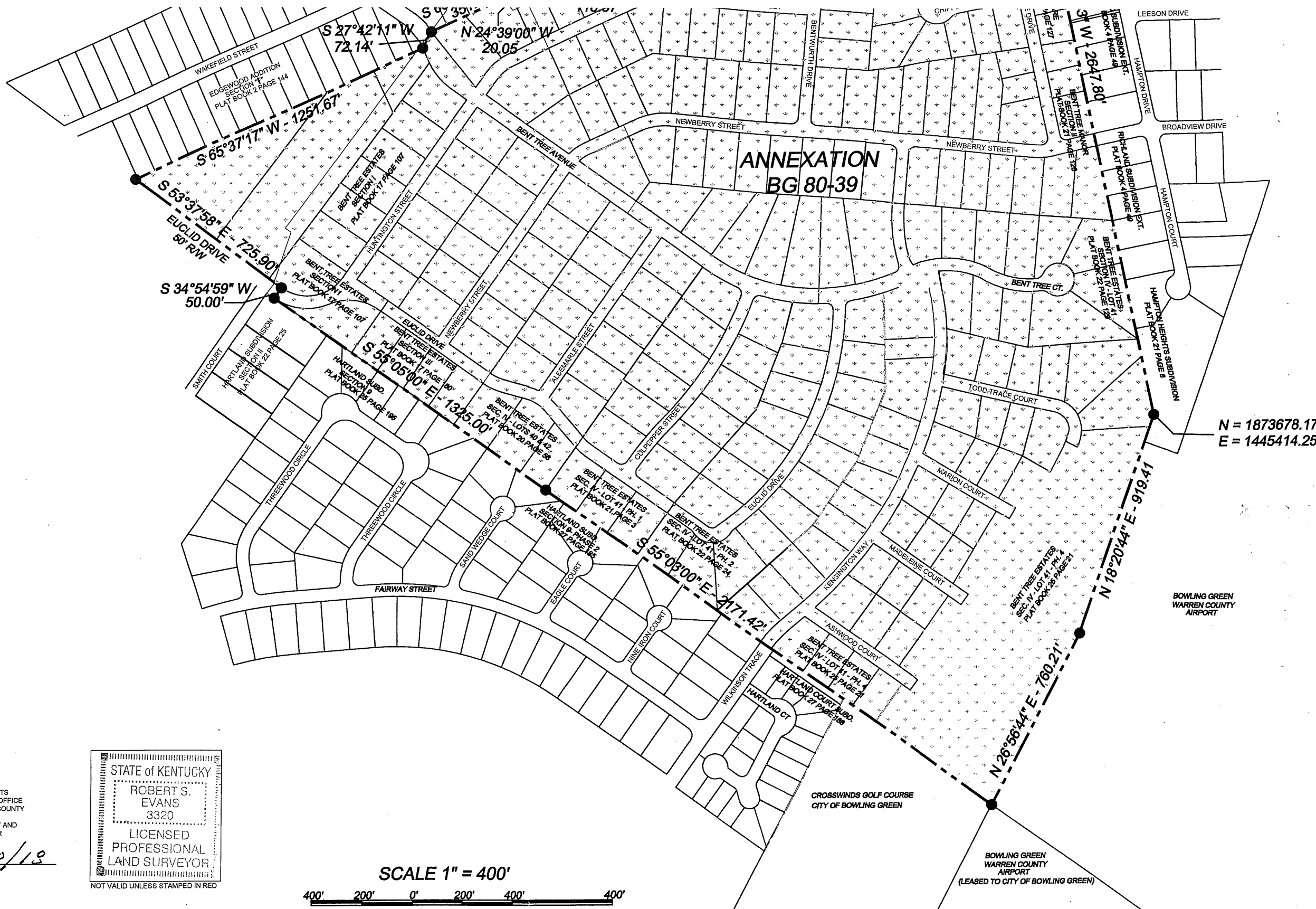


FIGURE.

KENTUCKY SOUTH 1602
T THE ORIGINAL ANNEXATION.



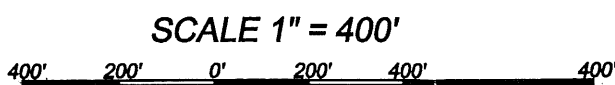
VICINITY MAP
NOT TO SCALE



THIS DRAWING WAS PREPARED USING DEEDS AND PLATS OF RECORD IN THE WARREN COUNTY COURT CLERKS OFFICE AND FROM TAX MAPS AND RECORDS IN THE WARREN COUNTY PROPERTY VALUATION ADMINISTRATORS OFFICE. THIS IS NOT OR INTENDED TO BE A BOUNDARY SURVEY AND SHOULD NOT BE USED AS SUCH. THIS DRAWING IS FOR ANNEXATION PURPOSES ONLY.

Robert S. Evans 5/30/18
ROBERT S. EVANS PLS# 3320 DATE

STATE of KENTUCKY
ROBERT S. EVANS
3320
LICENSED PROFESSIONAL LAND SURVEYOR
NOT VALID UNLESS STAMPED IN RED



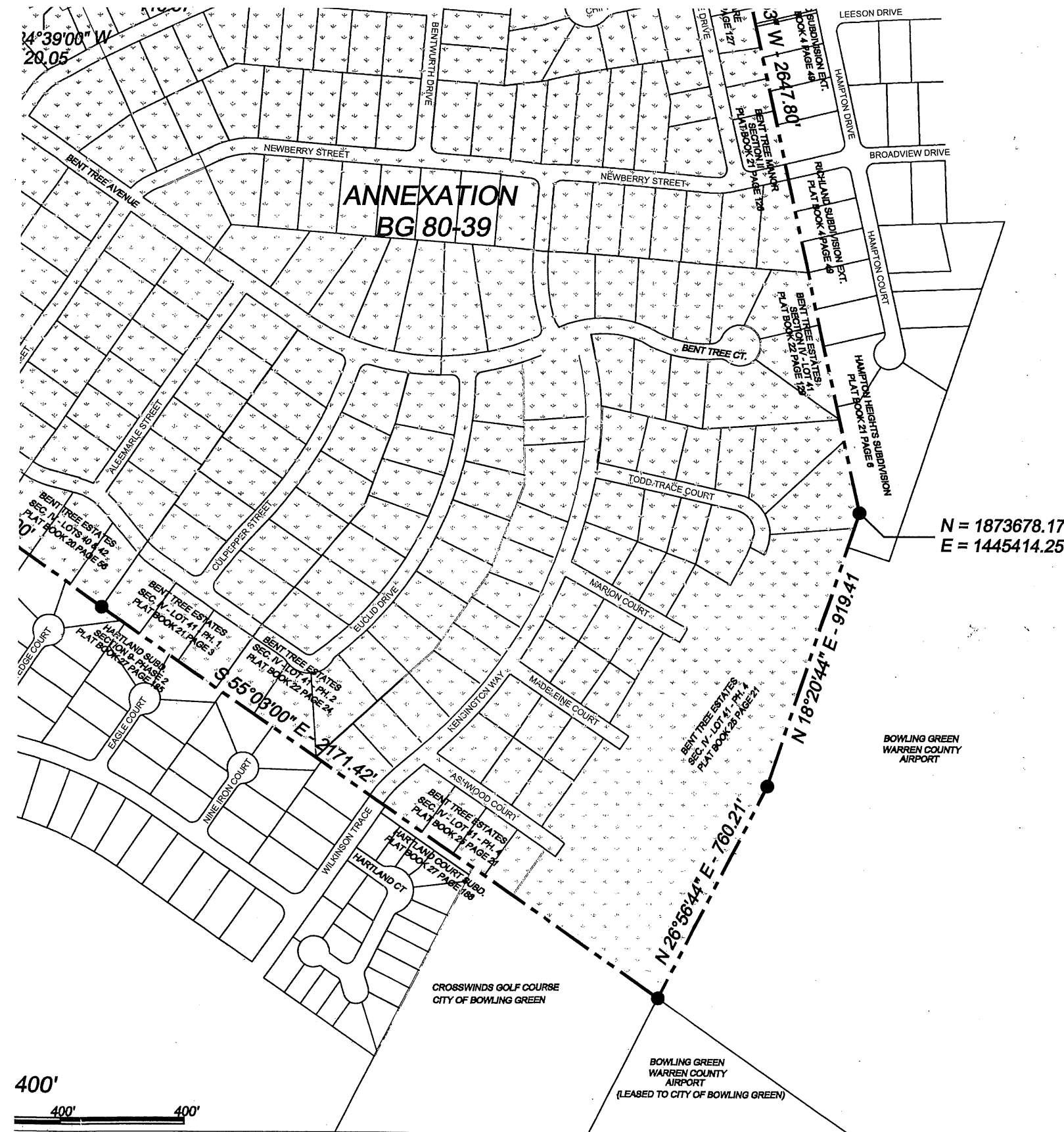
CITY OF BOWLING GREEN

PUBLIC WORKS DEPARTMENT

Date	Revision

ANNEX CORRECT
BG80-39

NOT TO SCALE



N = 1873678.17
E = 1445414.25

SURVEYOR

ROBERT S. EVANS PLS # 3320
1011 COLLEGE STREET
BOWLING GREEN, KENTUCKY
42101
PHONE # (270) 393-3229
e-mail - rob.evans@bgky.org

CLIENT

CITY OF BOWLING GREEN
1001 COLLEGE STREET
BOWLING GREEN, KENTUCKY
42101
PHONE # (270) 393-3000

WORKS DEPARTMENT

Date	Revision

ANNEX CORRECTION
BG80-39

SHEET 1 OF 1		
JOB NO.	SCALE	DATE
18022	1" = 400'	05/22/2018