

ORDINANCE ANNEXING RIGHT-OF-WAY BY CONSENT

MICHAEL G. ADAMS
SECRETARY OF STATE
COMMONWEALTH OF KENTUCKY
BY Tina A

ORDINANCE ANNEXING A TOTAL OF APPROXIMATELY 5.073 ACRES OF RIGHT-OF-WAY LOCATED ALONG U.S. 68-80 (GLASGOW ROAD) FROM THE INTERSECTION OF SUNNYSIDE GOTTS ROAD TO ADVANTAGE DRIVE, WITH PROPERTY PRESENTLY OWNED BY THE KENTUCKY TRANSPORTATION CABINET, WITH SAID TERRITORY BEING CONTIGUOUS TO EXISTING CITY LIMITS

WHEREAS, pursuant to KRS 81A.412, the City of Bowling Green may annex any area which meets the requirements for annexation if the owner of record of the land to be annexed gives prior consent in writing; and,

WHEREAS, the Commonwealth of Kentucky Transportation Cabinet has requested and consented in writing to the annexation of 5.073 acres of right-of-way located along U.S. 68-80 (Glasgow Road) from the intersection of Sunnyside Gotts Road to Advantage Drive; and,

WHEREAS, the City of Bowling Green hereby declares it desirable to annex the right-of-way as described in the attachments to this Ordinance; and,

WHEREAS, the proposed right-of-way to be annexed is adjacent or contiguous to the City; and,

NOW, THEREFORE, BE IT ORDAINED by the City of Bowling Green, Kentucky pursuant to KRS 81A.412 as follows:

1. The right-of-way presently owned by the Commonwealth of Kentucky Transportation Cabinet located along U.S. 68-80 (Glasgow Road) from the intersection of Sunnyside Gotts Road to Advantage Drive, containing 5.073 acres of right-of-way, which right-of-way is identified on the attached map and further described in the attachments to this Ordinance, all of which is contiguous to existing city limits, shall be and is hereby annexed into the City of Bowling Green, Kentucky by consent of the owner, and the boundaries of the City are hereby extended so as to include and incorporate all of

(Ordinance No. BG2024 - 15)

this right-of-way into the City of Bowling Green.

2. A copy of this Ordinance shall be forwarded to the Public Works Department, Planning and Design Division and it is hereby authorized and directed to make the necessary changes to the territorial limits of the City in Chapter One of the City of Bowling Green Code of Ordinances to reflect this annexation.

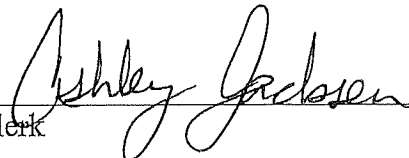
3. The provisions of this Ordinance are hereby declared to be severable, and if any section, phrase or provision shall for any reason be declared invalid, such declaration of invalidity shall not affect the validity of the remainder of this Ordinance.

4. All prior Municipal Orders or Ordinances or parts of any Municipal Order or Ordinance in conflict herewith are hereby repealed.


5. This Ordinance is adopted pursuant to KRS 83A.060 in that it was introduced on August 6, 2024, and given final reading on August 20, 2024, and said Ordinance shall be in full force and effect upon signature, recordation and publication in summary pursuant to KRS Chapter 424.

ADOPTED: August 20, 2024

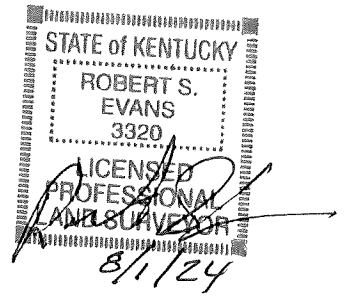
APPROVED: 
Mayor, Chairman of Board of Commissioners

ATTEST: 
City Clerk

SPONSORED BY: Jeffery B. Meisel, City Manager

CERTIFIED TRUE COPY
ATTEST 
CITY CLERK, BOWLING GREEN, KY

Legal Description Proposed Annexation
US 68/80 (Glasgow Road)



Being a 5.073 acre proposed annexation along US 68/80 (Glasgow Road) at Advantage Drive and adjacent to the corporate limits of the city of Bowling Green and more particularly described as follows:

The following description prepared by Robert S. Evans PLS#3320, City Surveyor, Bowling Green Public Works using KYTC Hwy Plans STP 5084 (031) and a survey by Arnold Consulting Engineers dated 01/02/2022. Using previous annexations BG 2003-28, BG 2013-6 and BG 2020-35 as recorded in the Bowling Green Clerk's Office. This is not a boundary survey and is for annex purposes only.

Beginning at a point in the west right-of-way of Sunnyside-Gott Road and the south right-of-way of US 68/80 (Glasgow Road) ;thence with the south right-of-way of US 68/80 (Glasgow Road) South 86 degrees 32 minutes 17 seconds East a distance of 500.99 feet to a point ; thence South 83 degrees 18 minutes 35 seconds East a distance of 283.52 feet to a point ; thence South 75 degrees 26 minutes 26 seconds East a distance of 114.44 feet to a point ; thence with a curve turning to the right with an arc length of 162.18 feet, with a radius of 647.58 feet, with a chord bearing of South 64 degrees 44 minutes 27 seconds East, with a chord length of 161.76 feet to a point ; thence South 58 degrees 37 minutes 01 seconds East a distance of 214.35 feet to a point in the south right-of-way ;thence crossing over US 68/80 (Glasgow Road) North 31 degrees 23 minutes 30 seconds East a distance of 314.39 feet to a point in the south right-of-way Advantage Drive; thence along said right-of-way with a curve turning to the left with an arc length of 178.02 feet, with a radius of 340.00 feet, with a chord bearing of South 83 degrees 48 minutes 02 seconds East, with a chord length of 176.00 feet to a point; thence North 81 degrees 11 minutes 59 seconds East a distance of 383.52 feet to a point ;thence with a curve turning to the left with an arc length of 268.17 feet, with a radius of 415.00 feet, with a chord bearing of North 62 degrees 41 minutes 15 seconds East, with a chord length of 263.53 feet to a point ; thence with a compound curve turning to the left with an arc length of 90.11 feet, with a radius of 384.98 feet, with a chord bearing of South 83 degrees 23 minutes 54 seconds West, with a chord length of 89.91 feet to a point; thence South 76 degrees 28 minutes 12 seconds West a distance of 161.43 feet to a point ;thence with a curve turning to the right with an arc length of 154.05 feet, with a radius of 1609.66 feet, with a chord bearing of South 79 degrees 47 minutes 43 seconds West, with a chord length of 153.99 feet to a point ;thence with a compound curve turning to the right with an arc length of 125.02 feet, with a radius of 1388.17 feet, with a chord bearing of South 84 degrees 18 minutes 41 seconds West, with a chord length of 124.98 feet to a point ;thence with a reverse curve turning to the left with an arc length of 182.75 feet, with a radius of 4241.63 feet, with a chord bearing of South 82 degrees 58 minutes 12 seconds West, with a chord length of 182.74 feet to a point ;thence South 82 degrees 23 minutes 54 seconds West a distance of 148.52 feet to a point ;thence with a curve turning to the right with an arc length of 59.30 feet, with a radius of 1091.11 feet, with a chord bearing of South 84 degrees 25 minutes 47 seconds West, with a chord length of 59.29 feet to a point ;thence North 89 degrees 50 minutes 15 seconds West a distance of 210.88 feet to a point ;thence South 14 degrees 29 minutes 50 seconds West a distance of 8.63 feet to a point in the north right-of-way of US 68/80 (Glasgow Road) ;thence with said right-of-way North 81 degrees 29 minutes 40 seconds West a distance of 290.50 feet to a point ;thence South 87 degrees 34 minutes 25 seconds West a distance of 306.03 feet to a point ;thence North 87 degrees 02 minutes 19 seconds West a distance of 450.83 feet to a point in the north right-of-way of US 68/80 (Glasgow Road) ;thence crossing said road South 06 degrees 27 minutes 02 seconds West a distance of 66.68 feet to the point of beginning, having an area of 220996.2 Square Feet, 5.073 Acres



LINE TABLE

LINE	BEARING	DISTANCE
L1	S 76°28'12" W	161.43'
L2	S 82°23'54" W	148.52'
L3	N 89°50'15" W	210.88'
L4	S 14°29'50" W	8.63'
L5	N 81°29'40" W	290.50'
L6	S 87°34'25" W	306.03'
L7	S 06°27'02" W	66.68'

CURVE TABLE

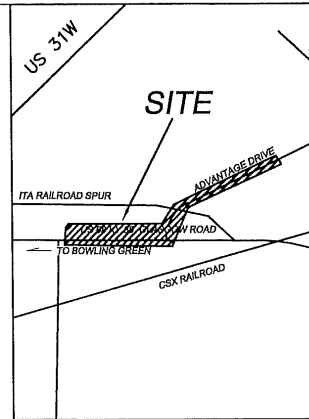
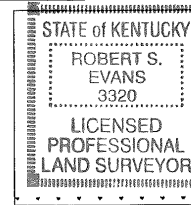
CURVE	RADIUS	ARC LENGTH	CHORD LENGTH	CHORD BEARING	DELTA ANGLE
C1	647.58'	162.18'	161.76'	S 64°44'27" E	14°20'57"
C2	340.00'	178.02'	176.00'	S 83°48'02" E	29°59'59"
C3	415.00'	268.17'	263.53'	N 62°41'15" E	37°01'26"
C4	384.98'	90.11'	89.91'	S 83°23'54" W	13°24'41"
C5	1609.66'	154.05'	153.99'	S 79°47'43" W	5°29'00"
C6	1388.17'	125.02'	124.98'	S 84°18'41" W	5°09'37"
C7	4241.63'	182.75'	182.74'	S 82°58'12" W	2°28'07"
C8	1091.11'	59.30'	59.29'	S 84°25'47" W	3°06'50"

NOTES

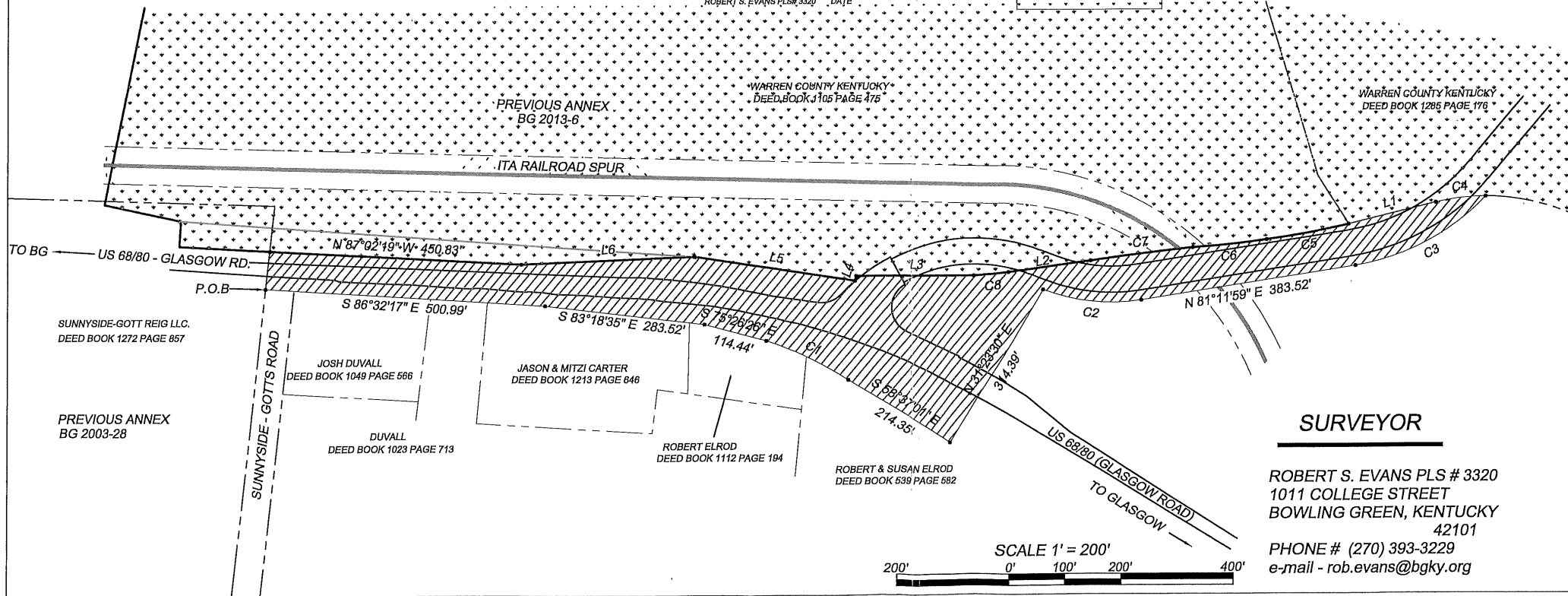
- 1) SOURCE OF TITLE : KYTC HIGHWAY PLANS STP 5084(031) FROM THE KYTC MAPPING WEBSITE.
- 2) THIS DRAWING PREPARED BY ROBERT S. EVANS PLS #3320, BOWLING GREEN PUBLIC WORKS, USING A SURVEY BY ARNOLD CONSULTING ENGINEERS DATED 01/05/2022 AND PREVIOUS ANNEXATIONS BG 2003-28, BG 2013-6 AND BG 2020-35 AS RECORDED IN THE BOWLING GREEN CITY CLERK'S OFFICE, THIS IS NOT A BOUNDARY SURVEY AND SHOULD NOT BE USED AS SUCH. DRAWING IS IN STATE PLANE KY SOUTH 1602
- 3) ANNEXED AREA 5.073 ACRES = 
- 4) PREVIOUS ANNEXED AREAS = 

THIS DRAWING WAS PREPARED USING DEEDS AND PLATS OF RECORD IN THE WARREN COUNTY COURT CLERK'S OFFICE AND FROM TAX MAPS AND RECORDS IN THE WARREN COUNTY PROPERTY VALUATION ADMINISTRATORS OFFICE. THIS IS NOT OR INTENDED TO BE A BOUNDARY SURVEY AND SHOULD NOT BE USED AS SUCH. THIS DRAWING IS FOR ANNEXATION PURPOSES ONLY.

Robert S. Evans 8/1/24
ROBERT S. EVANS PLS# 3320 DATE



VICINITY
NOT TO SCALE



SURVEYOR

ROBERT S. EVANS PLS # 3320
1011 COLLEGE STREET
BOWLING GREEN, KENTUCKY 42101
PHONE # (270) 393-3229
e-mail - rob.evans@bgky.org



CITY OF BOWLING GREEN

PUBLIC WORKS DEPARTMENT

PROPOSED ANNEXATION
ADVANTAGE DRIVE/ GLASGOW RD.

SHEET

JOB NO.
24077 ANNEX