

CITY OF BURNSIDE, KY

KRS 81A.470 Certification

I certify that I am the duly qualified City Clerk of the City of Burnside, Kentucky, and the following **four (4) pages** of Ordinance 2017-015 is a true, correct, and complete copy duly adopted by the City Council at a duly convened meeting held on September 20, 2017 and December 8, 2017 (as amended), all as appears in the official records of the City of Burnside, Kentucky.

WITNESS, my hand and seal, this 11th day of January, 2018

Crissa Morris
Crissa Morris, Burnside City Clerk

RECEIVED AND FILED
DATE January 22, 2018

ALISON LUNDERGAN GRIMES
SECRETARY OF STATE
COMMONWEALTH OF KENTUCKY
BY Hardie Adkinson

**CITY OF BURNSIDE
ORDINANCE 2017- 015**

**AN ORDINANCE OF THE CITY OF BURNSIDE, KENTUCKY AMENDING
ORDINANCE 2017-011
STRIKING THE AREA OF BURNSIDE KNOWN AS P.C. PARK FROM THE CITY**

WHEREAS, it is the desire of the City Council of the City of Burnside to strike uninhabited territory known as P.C. Park from the City of Burnside; and

WHEREAS, Ordinance 2017-011 erroneously referenced Ordinance 2015-002 as the Ordinance authorizing annexation of the P.C. Park area;

NOW THEREFORE be it ordained by the City Council of the City of Burnside does hereby amend Ordinance 2017-011 as follows:

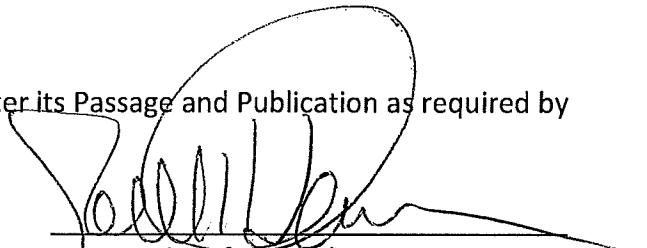
WHEREAS, it is the desire of the City Council of the City of Burnside to strike uninhabited territory known as P.C. Park from the City of Burnside; and

WHEREAS, it is the desire of the City Council of Burnside, Kentucky to reverse the annexation of the P.C. Park area effectuated via City of Burnside Ordinance #2015-0025.

NOW THEREFORE be it ordained by the City Council of the City of Burnside does hereby strike the following territory from its city limits:

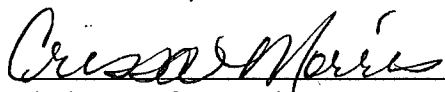
SECTION 2. Effective date.

This Ordinance shall take effect immediately after its Passage and Publication as required by law.



Mayor, City of Burnside

Attested to by:



Clerk, City of Burnside

First reading: 12/04/17

Second reading: 12/8/17

Date of Publication: 12/17/17

Publication: Commonwealth Journal

**CITY OF BURNSIDE
ORDINANCE 2017-011**

**AN ORDINANCE OF THE CITY OF BURNSIDE, KENTUCKY
STRIKING THE AREA OF BURNSIDE KNOWN AS P.C. PARK FROM THE CITY**

WHEREAS, it is the desire of the City Council of the City of Burnside to strike uninhabited territory known as P.C. Park from the City of Burnside; and

WHEREAS, it is the desire of the City Council of Burnside, Kentucky to reverse the annexation of the P.C. Park area effectuated via City of Burnside Ordinance #2015-002.

NOW THEREFORE be it ordained by the City Council of the City of Burnside does hereby strike the following territory from its city limits:

SECTION 1. Legal Description

Beginning at a point, located on the west bank of Fishing Creek, said having a KY State Plane single zone coordinate of (N: 3,543,401.0054, E: 5,234,039.5370). Said point further described as being a corner of the City of Burnside, Kentucky per Ordinance #110.5 and #110.16;

- 1) N 54°06'40" W a distance of 951.16';
- 2) S 79°16'43" W a distance of 237.44';
- 3) N 10°28'58" E a distance of 272.58';
- 4) N 41°27'02" W a distance of 864.43' to (found) U.S.A.C.E. Monument X-2406-1;
- 5) N 80°56'35" W a distance of 134.97' to (found) U.S.A.C.E. Monument X-2406-2;
- 6) N 43°17'27" W a distance of 489.09' to (found) U.S.A.C.E. Monument X-2406-3;
- 7) S 67°53'58" W a distance of 36.20' to (found) U.S.A.C.E. Monument X-2406-4;
- 8) N 37°36'00" W a distance of 124.13' to (found) U.S.A.C.E. Monument X-2406-5;
- 9) N 08°24'18" W a distance of 221.46' to (found) U.S.A.C.E. Monument X-2406-6;
- 10) N 47°19'09" W a distance of 1103.09';
- 11) N 74°15'02" E a distance of 685.66';
- 12) N 01°16'54" W a distance of 631.88';
- 13) N 22°57'05" E a distance of 620.29' to (found) U.S.A.C.E. Monument X-2408-A3;
- 14) N 31°04'53" E a distance of 1135.15' to (found) U.S.A.C.E. Monument X-2409-1;
- 15) N 15°05'09" E a distance of 396.74' to (found) U.S.A.C.E. Monument X-2409-2;

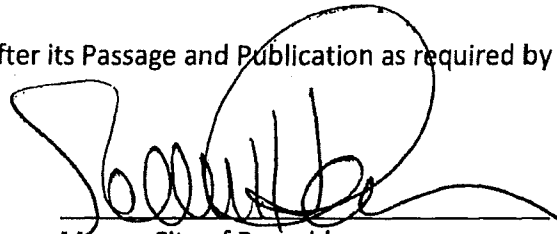
- 16) N 84°56'13" W a distance of 441.35' to (found) U.S.A.C.E. Monument X-2409-3;
- 17) N 08°48'25" E a distance of 224.16';
- 18) S 45°45'51" W a distance of 239.43' to (found) U.S.A.C.E. Monument X-2409-5;
- 19) S 77°29'46" W a distance of 155.10';
- 20) S 61°43'19" W a distance of 455.51' to (found) U.S.A.C.E. Monument X-2409-7;
- 21) S 86°11'06" W a distance of 324.93';
- 22) S 83°32'51" W a distance of 229.17';
- 23) S 87°48'58" W a distance of 356.42' to (found) U.S.A.C.E. Monument X-2408-B1;
- 24) S 40°19'19" W a distance of 353.29';
- 25) S 59°06'42" W a distance of 1377.58';
- 26) S 10°45'49" E a distance of 101.62' to (found) U.S.A.C.E. Monument X-2414-1;
- 27) N 32°10'32" W a distance of 1936.25' to a (set) 5/8" rebar with plastic cap stamped AGT 3630;
- 28) N 27°06'53" E a distance of 4037.89' to (found) U.S.A.C.E. Monument X-2419-1;
- 29) S 83°33'13" E a distance of 2033.31' to a (set) P/K nail with Alum. Washer stamped AGT 3630;
- 30) S 42°18'22" E a distance of 333.66' to (found) U.S.A.C.E. Monument X-2416-S4;
- 31) S 51°33'09" W a distance of 67.91' to (found) U.S.A.C.E. Monument X-2411-A1;
- 32) S 58°35'26" E a distance of 971.27' to (found) U.S.A.C.E. Monument X-2411-2;
- 33) S 63°22'10" E a distance of 1470.17' to (found) U.S.A.C.E. Monument X-2411-1;
- 34) S 56°23'29" E a distance of 834.37' to (found) U.S.A.C.E. Monument X-2411-4;
- 35) S 14°50'10" W a distance of 2095.90' to (found) U.S.A.C.E. Monument X-2407-1;
- 36) S 29°19'34" W a distance of 509.83';
- 37) S 30°02'53" W a distance of 402.52';
- 38) S 39°01'46" W a distance of 447.47';
- 39) S 27°25'05" W a distance of 398.68';
- 40) S 12°40'28" W a distance of 549.86';
- 41) S 07°58'14" W a distance of 518.00';

- 42) S 17°59'26" E a distance of 175.20';
- 43) S 06°54'54" W a distance of 324.42';
- 44) S 28°12'30" E a distance of 215.88';
- 45) S 13°23'15" E a distance of 130.02' to (found) U.S.A.C.E. Monument X-2403-1;
- 46) S 32°11'33" E a distance of 172.90' to (found) U.S.A.C.E. Monument X-2403-2;
- 47) S 39°51'33" E a distance of 194.99' to (found) U.S.A.C.E. Monument X-2403-3;
- 48) S 46°47'08" E a distance of 208.43';
- 49) S 03°16'16" E a distance of 1586.43' to the point of Beginning.

Said territory to be stricken having an area of **686.55 acres**.

SECTION 2. Effective date.

This Ordinance shall take effect immediately after its Passage and Publication as required by law.



Mayor, City of Burnside

Attested to by:

Cressa Moired
Clerk, City of Burnside

First reading: 09/11/2017
Second reading: 09/20/2017
Date of Publication: 10/01/2017
Publication: Commonwealth Journal

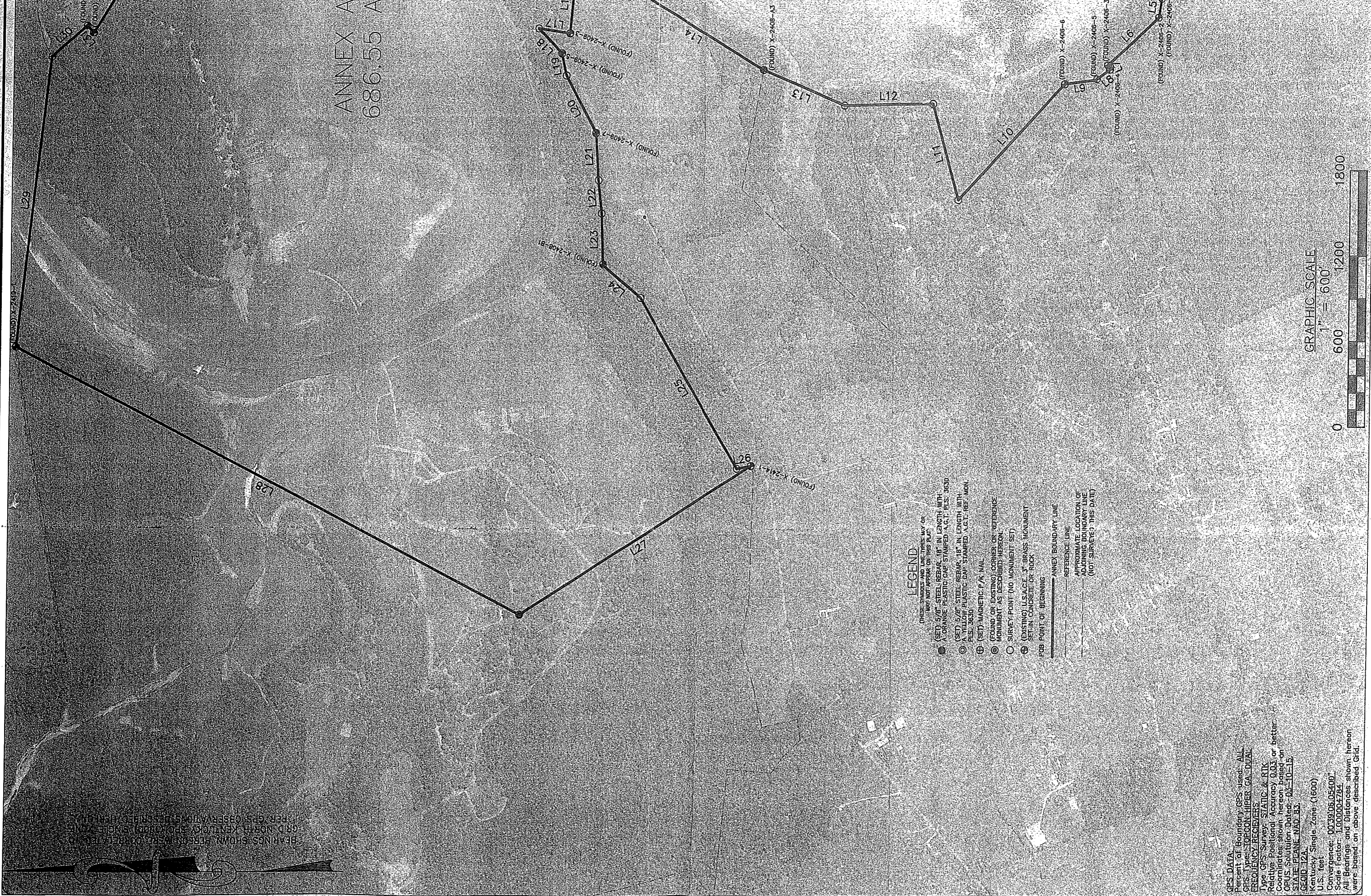
**City of Burnside – Portion of PC Park, Annexation
Ordinance # 2015-005
Description**

A certain tract or parcel of land located adjacent to the existing northern City limits of Burnside, Kentucky, on Fishing Creek of Lake Cumberland near the Kentucky Highway 80 Bridge, and being more particularly described as follows:

The following description was prepared by Anthony G. Thompson PLS #3630 of AGT Land Surveying, Firm Permit #496. Said description was based on an actual Static and RTK GPS field survey in part, of (found) United States Army Corps of Engineers (U.S.A.C.E.) monuments and (set) monuments. Calls taken from U.S.A.C.E. maps of Lake Cumberland obtained from the office at 855 Boat Dock Road, Somerset, Kentucky, contact Marshall T. Jennings, also calls taken from previous annexation surveys for the City of Burnside. The purpose of this annexation survey is to delineate the limits of the aforesaid annexation. It does not in any way reflect a determination of the individual parcel boundaries and should not be used for that purpose.

Beginning at a point, located on the west bank of Fishing Creek, said having a KY State Plane single zone coordinate of (N: 3,543,401.0054, E: 5,234,039.5370). Said point further described as being a corner of the City of Burnside, Kentucky per Ordinance #110.5 and #110.16;

- 1) N 54°06'40" W a distance of 951.16';
- 2) S 79°16'43" W a distance of 237.44';
- 3) N 10°28'58" E a distance of 272.58';
- 4) N 41°27'02" W a distance of 864.43' to (found) U.S.A.C.E. Monument X-2406-1;
- 5) N 80°56'35" W a distance of 134.97' to (found) U.S.A.C.E. Monument X-2406-2;
- 6) N 43°17'27" W a distance of 489.09' to (found) U.S.A.C.E. Monument X-2406-3;
- 7) S 67°53'58" W a distance of 36.20' to (found) U.S.A.C.E. Monument X-2406-4;
- 8) N 37°36'00" W a distance of 124.13' to (found) U.S.A.C.E. Monument X-2406-5;
- 9) N 08°24'18" W a distance of 221.46' to (found) U.S.A.C.E. Monument X-2406-6;
- 10) N 47°19'09" W a distance of 1103.09';
- 11) N 74°15'02" E a distance of 685.66';
- 12) N 01°16'54" W a distance of 631.88';
- 13) N 22°57'05" E a distance of 620.29' to (found) U.S.A.C.E. Monument X-2408-A3;
- 14) N 31°04'53" E a distance of 1135.15' to (found) U.S.A.C.E. Monument X-2409-1;
- 15) N 15°05'09" E a distance of 396.74' to (found) U.S.A.C.E. Monument X-2409-2;
- 16) N 84°56'13" W a distance of 441.35' to (found) U.S.A.C.E. Monument X-2409-3;
- 17) N 08°48'25" E a distance of 224.16';
- 18) S 45°45'51" W a distance of 239.43' to (found) U.S.A.C.E. Monument X-2409-5;
- 19) S 77°29'46" W a distance of 155.10';
- 20) S 61°43'19" W a distance of 455.51' to (found) U.S.A.C.E. Monument X-2409-7;
- 21) S 86°11'06" W a distance of 324.93';
- 22) S 83°32'51" W a distance of 229.17';
- 23) S 87°48'58" W a distance of 356.42' to (found) U.S.A.C.E. Monument X-2408-B1;
- 24) S 40°19'19" W a distance of 353.29';
- 25) S 59°06'42" W a distance of 1377.58';
- 26) S 10°45'49" E a distance of 101.62' to (found) U.S.A.C.E. Monument X-2414-1;
- 27) N 32°10'32" W a distance of 1936.25' to a (set) 5/8" rebar with plastic cap stamped AGT 3630;
- 28) N 27°06'53" E a distance of 4037.89' to (found) U.S.A.C.E. Monument X-2419-1;



ANNEX A
686.55 A



LEGEND

- (THICK) STUDIES AND LINE TYPES MAY OR MAY NOT APPEAR ON THIS PLAN
- (SET) 5/8" STEEL REBAR, 18" IN LENGTH, WITH A ORANGE PLASTIC CAP STAMPED "A.G.T. PLS. 3630"
- (SET) 5/8" STEEL REBAR, 18" IN LENGTH, WITH A ORANGE PLASTIC CAP STAMPED "A.G.T. REF. MON. PLS. 3630"
- ⊕ (SET) MAGNETIC P/K NAIL
- ⊙ (FOUND OR EXISTING) CORNER OR REFERENCE MONUMENT AS DESCRIBED HEREON
- SURVEY POINT (NO MONUMENT SET)
- ⊕ (EXISTING) U.S.A.C.E. 3" BRASS TACUMENT SET IN CONCRETE OR ROCK
- POB POINT OF BEGINNING
- ANNEX BOUNDARY LINE
- REFERENCE LINE
- APPROXIMATE LOCATION OF ADJACENT BOUNDARY LINE (NOT SURVEYED THIS DATE)

GPS DATA
Percent of Boundary GPS used: ALL
GPS Types: TOPCON; HIPER; GA; DUAL
FREQUENCY RECEIVERS
Type: GPS Survey: STATIC & RTK
Relative Positional Accuracy: 0.03 or better
Coordinates shown hereon based on
OPUS Solution Dated: 05-10-15
STATE PLANE NAD 83
GEOID 172L
Kentucky Single Zone (1600)
U.S. Feet
Convergence: 00'39.05 054007
Scale Factor: 1.00004784
All Bearings and Distances shown hereon
were based on above described Ghd.

BEARINGS SHOWN HEREON WERE CORRECTED FOR
GRID NORTH KENTUCKY SPHEROID SINGLE ZONE
PER GPS OBSERVATION 5/10/15 AT THE TIME



ANNEX AREA
686.55 Acres

LINE	BEARING	DISTANCE
L1	N 54°06'40" W	951.16'
L2	S 79°16'43" W	237.44'
L3	N 10°28'58" E	272.58'
L4	N 41°27'02" W	864.43'
L5	N 80°56'35" W	134.97'
L6	N 43°17'27" W	489.09'
L7	S 67°53'58" W	36.20'
L8	N 37°36'00" W	124.13'
L9	N 08°24'18" W	221.46'
L10	N 47°19'09" W	1103.09'
L11	N 74°15'02" E	883.66'
L12	N 01°16'54" W	631.88'
L13	N 22°57'05" E	620.29'
L14	N 31°04'53" E	1135.15'
L15	N 15°05'09" E	396.74'
L16	N 84°56'13" W	441.35'
L17	N 08°48'25" E	224.16'
L18	S 45°45'51" W	239.43'
L19	S 77°29'46" W	155.10'
L20	S 61°43'19" W	455.51'
L21	S 86°11'06" W	324.93'
L22	S 83°32'51" W	229.17'
L23	S 87°48'58" W	356.42'
L24	S 40°19'19" W	353.29'
L25	S 59°06'42" W	1377.58'
L26	S 10°45'49" E	101.62'
L27	N 32°10'32" W	1936.25'
L28	N 27°06'53" E	4037.89'
L29	S 83°33'13" E	2033.31'
L30	S 42°18'22" E	333.66'
L31	S 51°33'09" W	67.91'
L32	S 58°35'26" E	971.27'
L33	S 63°22'10" E	1470.17'
L34	S 56°23'29" E	834.37'
L35	S 14°50'10" W	2095.90'
L36	S 29°19'34" W	509.83'
L37	S 30°02'53" W	402.52'
L38	S 39°01'46" W	447.47'
L39	S 27°25'05" W	398.68'
L40	S 12°40'28" W	549.86'
L41	S 07°58'14" W	518.00'
L42	S 17°59'26" E	175.20'
L43	S 06°54'54" W	324.42'
L44	S 28°12'30" E	215.88'
L45	S 13°23'15" E	130.02'
L46	S 32°11'33" E	172.90'
L47	S 39°51'33" E	194.99'
L48	S 46°47'08" E	208.43'
L49	S 03°16'16" E	1586.43'

STATE OF KENTUCKY
ANTHONY G. THOMPSON
 3630
 LICENSED PROFESSIONAL LAND SURVEYOR

DECLARATION:
 I HEREBY CERTIFY
 ANNEXATION ORDINANCE, KENTUCKY
 STATUTE, AND THE FC
 STATUTE AND THE FC
 (FOUND) UNLESS
 (U.S.A. C.E.) UNLESS
 CALLS TAKEN FROM
 CUMBERLAND BOAT
 MARSHALL TOWN
 PREVIOUS ANNEXA
 BURNSIDE, THE PU
 SURVEY IS TO DEL
 BURNSIDE ANNEX
 PARCEL BOUNDAR
 THAT PURPOSE

ANTHONY THOMPSON
 KY-ELS-INC. 3630

CITY OF BURNSIDE
 ORDINANCE 110.16

POB
 N: 3543401.0054
 E: 5234039.5370

E-377D

GENERAL NOTE(S):
THESE DRAWINGS ARE NOT VALID UNLESS THE ORIGINAL SIGNATURE AND STAMP ARE ATTACHED. ANY REPRODUCTION OR VARIANCE TO THESE DRAWINGS BY ELECTRONIC OR ANY OTHER MEANS ARE NOT TO BE CONSIDERED ISSUED BY THE LICENSED PROFESSIONAL LAND SURVEYOR.
THIS SURVEY AND PLAT WAS PREPARED FOR THE ENTRY IN THE TITLE BLOCK HEREON AND DOES NOT EXTEND TO ANY OTHER ENTRY, UNLESS RECERTIFIED BY THE LICENSED PROFESSIONAL LAND SURVEYOR.

GPS SERVICES
CAD SERVICES
ALTA-ACSM
TOPOGRAPHIC
SUBDIVISIONS
COMMERCIAL
RESIDENTIAL
FARMS

AGT
LAND SURVEYING
Anthony Thompson, PLS
2610 HWY. 90
BRONSTON, KY, 42518
(606) 561-7224

PULASKI COUNTY CLERK
KENTUCKY
JUL 13 10 51 AM '15

TITLE:
CITY OF BURNSIDE-PORTION OF PC PARK,
ANNEXATION ORDINANCE #2015-005

CLIENT(S):
CITY OF BURNSIDE
P.O. BOX 8
BURNSIDE, KY, 42519

JOB NO: 15-1645

FIELD CREW: A.G.T.

SCALE: 1"=600'

DWG. DATE: 03-24-15

SHEET NO. 1

CAB FILED
E SLIDE 377

JUL 31 2015

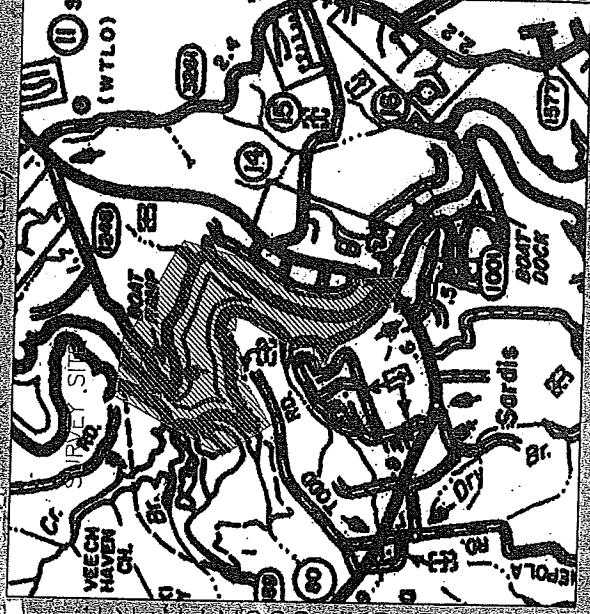
REC. FEE \$0.00

By LINDA F. METT, CLERK
Deputy

198

RESERVED FOR COUNTY COURT CLERK:

VICINITY MAP
(NOT TO SCALE)



LINE	BEARING	DISTANCE
L1	N 54°06'40" W	951.16'
L2	S 79°16'43" W	237.44'
L3	N 10°28'58" E	272.58'
L4	N 41°27'02" W	864.43'
L5	N 80°56'35" W	134.97'
L6	N 43°17'27" W	489.09'
L7	S 67°53'58" W	36.20'
L8	N 37°56'00" W	124.13'
L9	N 08°24'18" W	221.46'
L10	N 47°19'09" W	1103.09'
L11	N 74°15'02" E	685.66'
L12	N 01°16'54" W	631.88'
L13	N 22°57'05" E	620.29'
L14	N 31°04'53" E	1135.15'
L15	N 15°05'09" E	396.74'
L16	N 84°56'13" W	441.35'
L17	N 08°48'25" E	224.16'
L18	S 45°45'51" W	239.43'
L19	S 77°29'46" W	155.10'
L20	S 61°43'19" W	455.51'
L21	S 86°11'06" W	324.93'
L22	S 83°32'51" W	229.17'
L23	S 87°48'58" W	356.42'
L24	S 40°19'19" W	353.29'
L25	S 59°06'42" W	1377.58'
L26	S 10°45'49" E	101.62'
L27	N 32°10'32" W	1936.25'
L28	N 27°06'53" E	4037.89'
L29	S 83°33'13" E	2033.31'
L30	S 42°18'22" E	333.66'
L31	S 51°33'09" W	67.91'
L32	S 58°35'26" E	971.27'
L33	S 63°22'10" E	1470.17'
L34	S 56°23'29" E	834.37'
L35	S 14°50'10" W	2095.90'
L36	S 29°19'34" W	509.83'
L37	S 30°02'53" W	402.52'
L38	S 39°01'46" W	447.47'
L39	S 27°25'05" W	398.68'
L40	S 12°40'28" W	549.66'
L41	S 07°58'14" W	518.00'
L42	S 17°59'26" E	175.20'
L43	S 06°54'54" W	324.42'
L44	S 28°12'30" E	215.88'
L45	S 13°23'15" E	130.02'
L46	S 32°11'33" E	172.90'
L47	S 39°51'33" E	194.99'
L48	S 46°47'08" E	208.43'
L49	S 03°16'16" E	1586.43'

STATE OF KENTUCKY
ANTHONY G. THOMPSON
3630
LICENSED PROFESSIONAL LAND SURVEYOR

CERTIFICATION:
I HEREBY CERTIFY THAT THE BOUNDARY FOR ANNEXATION ORDINANCE 2015-005 FOR THE CITY OF BURNSIDE, KENTUCKY SHOWN ON THIS PLAT IS BASED ON THE FOLLOWING INFORMATION: AN ACTUAL SURVEY AND PER GPS FIELD SURVEY IN PART, OF (ROUND) UNITED STATES ARMY CORPS OF ENGINEERS CALLED MONUMENTS AND (SET) MONUMENTS, CUMBERLAND UNIVERSITY, MAPS OF LAKE CUMBERLAND, OBTAINED FROM THE OFFICE AT 855 BOAT DOCK ROAD, SOLELY IN KENTUCKY. CONTACT MARSHALL T. JENNINGS, ALSO, KENTUCKY CONTACT PREVIOUS ANNEXATION SURVEYS FOR TAKEN FROM BURNSIDE. THE PURPOSE OF THIS ANNEXATION SURVEY IS TO DELINEATE THE LIMITS OF THE APPEASAD ANNEXATION. IT DOES NOT IN ANY WAY REFLECT A DETERMINATION OF THE INDIVIDUAL PARCEL BOUNDARIES AND SHOULD NOT BE USED FOR THAT PURPOSE.

POB
N: 3543401 0054
E: 5234039 5376
CITY OF BURNSIDE
ORDINANCE 2015

ANTHONY THOMPSON
KY-PLS NO. 3630
DATE: 03-24-15