

I certify I am the duly qualified City Clerk of the City of Clay City, Kentucky, and the foregoing eight (8) pages of Ordinance No. 27-10-14 is a true, correct and complete copy duly adopted by the Clay City Council at a duly convened meeting held on the 27<sup>th</sup> day of October, 2014, all as appears in the official records of the City of Clay City.

WITNESS, my hand and Seal of the City of Clay City, this 28<sup>th</sup> day of October, 2014.

*Stacey Curtis*

Stacey Curtis, City Clerk

RECEIVED AND FILED  
DATE *October 30, 2014*

ALISON LUNDERGAN GRIMES  
SECRETARY OF STATE  
COMMONWEALTH OF KENTUCKY  
BY *Handie Alderman*

**CITY OF CLAY CITY, KENTUCKY**  
**ORDINANCE NO. 27-10-14**

**WHEREAS**, an Ordinance was previously enacted on December 5, 1983 by the City Council of the City of Clay City, Kentucky, (a copy of which is attached hereto and incorporated by reference); and,

**WHEREAS**, said ordinance was not an ordinance stating an intention to annex certain unincorporated territory contiguous to the City of Clay City, Kentucky, but rather was an ordinance designed to formally annex the territory described in the prior ordinance enacted by the City of Clay City stating the intent to annex; and,

**WHEREAS**, the City Council desires to dispel any ambiguity or questions regarding the intent or operation of the prior Ordinance dated December 5, 1983, and also desires to include a more precise and correct description of the property previously annexed under the attached Ordinance dated December 5, 1983; and,

**WHEREAS**, in order to prepare an accurate and complete map of the boundaries of the City of Clay City, Kentucky it has become necessary to now adopt an ordinance carrying out and reaffirming the stated intention in the said Ordinance dated December 5, 1983 to complete and finalize the annexation of the territory as described in the aforesaid ordinance; and,

**WHEREAS**, more than sixty days have elapsed since the original Ordinance stating an intention to annex went into effect, and no petition containing signatures of property owners in the area to be annexed have been received by the mayor pursuant to KRS 81A.420.

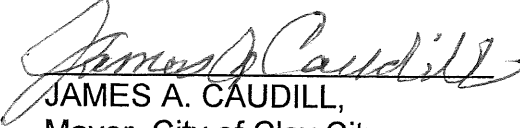
**NOW THEREFORE**, be it, and it is hereby ordained, by the City Council of the City of Clay City, Kentucky that the territory described in the attached Ordinance No. 13

dated December 5, 1983 be, and it is hereby annexed to, and incorporated in, the territorial boundaries of the City of Clay City, Kentucky, *nunc pro tunc*.

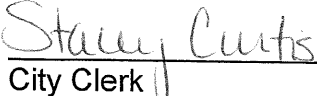
**FURTHER**, the description of the annexed territory attached hereto as "Exhibit B" is incorporated herein by reference to the said Ordinance dated December 5, 1983 as if fully copied at length.

This Ordinance shall become effective after passage and publication as required by law.

Enacted this the 27<sup>th</sup> day of October, 2014.

  
JAMES A. CAUDILL,  
Mayor, City of Clay City

Attest:

  
\_\_\_\_\_  
City Clerk  
City of Clay City

First Reading: 10-20-14  
Second Reading: 10-27-14  
Signed by Mayor: 10-27-14  
Published: 11-5-14

# EXHIBIT B

## DEED DESCRIPTION

Annexation

Ordinance No. 13

City of Clay City, KY

A Certain Parcel of land situated along both sides of SR 15 in Powell County, KY and contiguous with the City of Clay City, KY and being more particularly described as follows:

The POINT OF BEGINNING (P.O.B.) at Kentucky State Plane (NAD 83) Single Zone coordinate of Northing=3844102.48 and Easting=5442365.54, said being at the inlet of a Culvert on Brush Creek and running under SR 15 (and a corner on the Waltersville Annexation); thence with the Waltersville Annexation N 72°26'40" E, a distance of 187.69' to a point on the South side of Lofty Heights Road; thence N 43°09'48" W, a distance of 175.34' to a point at Ordinance Number 12-10-01; thence with Ordinance Number 12-10-01 N 72°26'40" E, a distance of 327.29'; thence leaving Ordinance Number 12-10-01 N 65°29'53" E, a distance of 220.18'; thence S 81°58'10" E, a distance of 405.33'; thence S 21°20'01" W, a distance of 238.41'; thence S 38°31'30" E, a distance of 29.71'; thence S 75°15'01" E, a distance of 384.07'; thence N 33°24'56" E, a distance of 122.17'; thence N 47°57'38" E, a distance of 23.89' to the south side of Smith Hollow Road; thence with the south side of Smith Hollow Road S 30°23'28" E, a distance of 69.34'; thence S 53°27'32" E, a distance of 121.98'; thence S 60°23'25" E, a distance of 179.47' to the south side of Fallen Road; thence with the south side of Fallen Road S 89°33'15" E, a distance of 147.83'; thence N 86°45'14" E, a distance of 210.19'; thence N 83°51'12" E, a distance of 327.13'; thence N 80°17'50" E, a distance of 123.47'; thence N 73°47'28" E, a distance of 113.43'; thence N 67°27'48" E, a distance of 98.83'; thence N 77°19'34" E, a distance of 130.82'; thence N 88°57'41" E, a distance of 203.22'; thence S 77°28'16" E, a distance of 99.66' to SR 15; thence with SR 15 N 22°13'03" E, a distance of 73.08' to Skinner Branch; thence with Skinner Branch S 72°22'30" E, a distance of 299.11' to the east low Water Line of Red River and the Original Clay City Ordinance Boundary; thence with the Low Water Line of Red River and the Original City Boundary S 27°58'21" W, a distance of 132.93'; thence S 00°15'40" E, a distance of 422.14'; thence S 01°13'00" W, a distance of 614.89'; thence S 30°15'26" E, a distance of 261.25'; thence S 15°35'03" E, a distance of 167.02'; thence S 06°33'54" W, a distance of 424.61'; thence S 00°23'51" E, a distance of 620.45' to line of Brush Creek with the Original City Boundary; thence crossing the River and with the center of Brush Creek S 71°22'45" W, a distance of 300.48'; and then continuing with the center of Brush Creek the following calls:

thence S 74°36'00" W, a distance of 67.57'; thence S 86°34'17" W, a distance of 46.73';  
thence N 84°03'14" W, a distance of 34.85'; thence N 58°30'12" W, a distance of 32.57';  
thence N 33°01'29" W, a distance of 37.83'; thence N 31°53'26" E, a distance of 31.92';

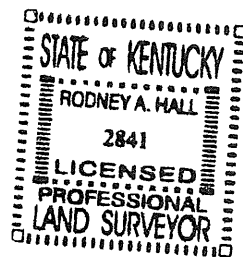
thence N71°20'15"E, a distance of 37.82'; thence N24°21'48"E, a distance of 25.28';  
thence N42°05'42"W, a distance of 27.76'; thence N79°44'24"W, a distance of 43.52';  
thence N54°52'11"W, a distance of 65.79'; thence N11°57'02"W, a distance of 40.18';  
thence N03°17'55"E, a distance of 51.49'; thence N01°10'50"W, a distance of 49.00';  
thence N81°54'58"W, a distance of 40.88'; thence S64°59'04"W, a distance of 39.56';  
thence N77°04'49"W, a distance of 39.26'; thence N67°13'42"W, a distance of 67.35';  
thence N68°14'34"W, a distance of 64.79'; thence S81°48'33"W, a distance of 45.42';  
thence S10°37'07"E, a distance of 41.55'; thence S67°03'19"E, a distance of 67.08';  
thence S61°11'25"E, a distance of 49.93'; thence S42°08'03"E, a distance of 35.20';  
thence S18°17'51"W, a distance of 59.10'; thence S03°24'42"W, a distance of 40.54';  
thence S31°25'50"W, a distance of 66.27'; thence N62°25'28"W, a distance of 61.52';  
thence N50°05'38"W, a distance of 51.79'; thence N64°12'38"W, a distance of 42.93';  
thence S89°18'03"W, a distance of 65.15'; thence N81°07'16"W, a distance of 60.21';  
thence N66°19'58"W, a distance of 57.69'; thence N21°58'12"W, a distance of 41.83';  
thence N30°11'14"W, a distance of 39.76'; thence N56°40'45"W, a distance of 30.75';  
thence N65°38'51"W, a distance of 51.82'; thence S82°00'29"W, a distance of 52.07';  
thence N60°21'23"W, a distance of 48.10'; thence N48°29'30"W, a distance of 29.30';  
thence N29°30'26"E, a distance of 35.33'; thence N45°53'42"E, a distance of 26.27';  
thence N35°17'58"E, a distance of 60.86'; thence N04°17'07"W, a distance of 28.27';  
thence N22°19'06"W, a distance of 37.60'; thence N14°24'10"W, a distance of 32.87';  
thence N00°44'07"E, a distance of 44.22'; thence N15°47'02"E, a distance of 34.14';  
thence N02°20'50"W, a distance of 42.01'; thence N16°49'56"W, a distance of 19.61';  
thence N05°19'42"E, a distance of 33.95'; thence N48°34'17"E, a distance of 41.98';  
thence N52°24'12"E, a distance of 45.87'; thence N33°16'35"W, a distance of 32.61';  
thence N11°55'24"W, a distance of 23.19'; thence N00°07'23"W, a distance of 48.74';  
thence N24°05'58"E, a distance of 38.17'; thence N42°06'23"E, a distance of 47.24';  
thence N24°45'39"E, a distance of 40.50'; thence N42°27'29"W, a distance of 42.45';  
thence N75°19'50"W, a distance of 24.18'; thence N44°20'29"W, a distance of 31.72';  
thence N19°37'13"W, a distance of 41.00'; thence N50°16'56"W, a distance of 83.27';  
thence N77°09'16"W, a distance of 44.67'; thence N75°36'40"W, a distance of 33.63';  
thence N43°04'58"W, a distance of 32.64'; thence N01°06'17"E, a distance of 28.15';  
thence N13°36'24"W, a distance of 25.20'; thence N51°02'48"W, a distance of 14.06';  
thence N56°55'48"W, a distance of 33.26'; thence N41°25'49"W, a distance of 72.17';  
thence N14°35'58"W, a distance of 36.83'; thence N39°38'41"W, a distance of 49.76';  
thence N48°38'15"W, a distance of 51.49'; thence N32°21'39"W, a distance of 45.44';  
thence N24°38'22"W, a distance of 44.23'; thence N21°48'17"W, a distance of 33.99';  
thence N21°49'26"W, a distance of 42.78'; thence N08°03'38"W, a distance of 29.79';  
thence N21°23'20"W, a distance of 54.48'; thence N22°18'57"W, a distance of 48.11';  
thence N37°39'34"W, a distance of 55.02'; thence N73°04'53"W, a distance of 21.91';  
thence N66°48'11"W, a distance of 38.07'; thence N70°45'41"W, a distance of 55.33';  
thence N87°43'42"W, a distance of 24.08'; thence S69°37'17"W, a distance of 33.42';  
thence S54°09'32"W, a distance of 80.74'; thence S53°56'49"W, a distance of 60.43';  
thence S70°59'03"W, a distance of 40.63'; thence S72°56'08"W, a distance of 47.03';  
thence N76°27'03"W, a distance of 55.87'; thence N86°28'16"W, a distance of 45.87';  
thence S89°42'31"W, a distance of 46.91'; thence N44°04'15"W, a distance of 30.67';  
thence N07°57'04"W, a distance of 43.09'; thence N19°46'26"W, a distance of 46.14';  
thence N31°48'15"W, a distance of 24.09'; thence N50°55'06"W, a distance of 74.92';  
thence N49°01'40"W, a distance of 42.63'; thence N49°12'47"W, a distance of 78.43';

thence N47°33'50"W, a distance of 97.98'; thence N49°10'10"W, a distance of 96.47';  
thence N49°41'49"W, a distance of 40.44'; thence N60°20'48"W, a distance of 37.11';  
thence N75°34'09"W, a distance of 45.71'; thence N76°39'47"W, a distance of 51.63';  
thence N71°38'32"W, a distance of 52.40'; thence N25°49'29"W, a distance of 48.47';  
thence N21°23'24"W, a distance of 31.27'; thence N27°24'17"W, a distance of 27.07';  
thence N44°19'16"W, a distance of 19.65'; thence N59°58'02"W, a distance of 37.58';  
thence N71°51'34"W, a distance of 53.15'; thence N62°53'54"W, a distance of 34.41';  
thence N47°49'49"W, a distance of 25.35'; thence N50°33'48"W, a distance of 47.55';  
thence N53°33'24"W, a distance of 24.84'; thence N20°46'34"W, a distance of 32.20';  
thence N65°26'37"W, a distance of 69.16'; thence N70°55'25"W, a distance of 57.66';  
thence N67°06'58"W, a distance of 58.81'; thence N66°23'49"W, a distance of 65.54';  
thence N60°50'00"W, a distance of 56.60'; thence N44°24'55"W, a distance of 86.74';  
thence N39°30'53"W, a distance of 167.79' to the POINT OF BEGINNING; said described  
tract containing 111.87 Acres, more or less.

## Statement of Resources

The property described above was computed as shown on a Map of the City of Clay City prepared by and certified by Blake Adams, PLS on 10/31/2008 with the exception of the center of Brush Creek, which is based on a current survey (conducted 7/14/2014 by Hall Mapping services, LLC) and tied to Survey Quality Control. The Annexation Ordinance No. 13 as well as the adjoining Annexation Ordinances was used as a Reference.

Coordinates and Bearings are Kentucky State Plane (NAD 83) Single Zone. The P.O.B. coordinate was derived using a Handheld GPS Unit and therefore approximate and for reference only.



*Rodney A. Hall*  
Signature

2841  
PLS Number

9/19/2014  
Date

I certify I am the duly qualified City Clerk of the City of Clay City, Kentucky, and the foregoing three (3) pages of Ordinance No. 13 is a true, correct and complete copy duly adopted by the Clay City Council at a duly convened meeting held on the 5<sup>th</sup> day of December, 1983, all as appears in the official records of the City of Clay City.

WITNESS, my hand and Seal of the City of Clay City, this 27<sup>th</sup> day of October, 2014.

Stacey Curtis  
Stacey Curtis, City Clerk

RECEIVED AND FILED  
DATE October 30, 2014  
\_\_\_\_\_  
ALISON LUNDERGAN GRIMES  
SECRETARY OF STATE  
COMMONWEALTH OF KENTUCKY  
BY Karlie Adkins

WHEREAS, the City of Clay City, Kentucky, has previously enacted an Ordinance stating its intention to annex the property described in Exhibit "A", attached hereto and incorporated by reference, and

WHEREAS, more than 60 days has elapsed since the enactment of said Ordinance, and

WHEREAS, neither 50% of the owners of land, or voters, or both, have filed a petition with the mayor opposing annexation, under KRS 81A.420, now  
BE IT ORDAINED AS FOLLOWS:

That the City of Clay City, Kentucky, pursuant to KRS 81A.420 hereby annexes that unincorporated area of Powell County, Kentucky described more fully in "Exhibit "A" attached hereto, and same shall hereafter be a part of the City of Clay City, Kentucky, with all rights, privileges, and obligations which attach thereto

Effective upon publication.

The Vote was: YEAS 5 : NAYS \_\_\_\_\_ : ABSENT 1

IN WITNESS WHEREOF, the City Council of the City of Clay City, Kentucky has duly adopted this Resolution and caused it to be executed by the officers below in duplicate on this 5th day of December, 1983.

Arnold Carmichael  
BY Arnold Carmichael

TITLE Mayor

ATTEST:

Betty Beasley  
TITLE City Clerk

CERTIFICATION

I, the undersigned, as Clerk of the City of Clay City, Kentucky hereby certify that the City Council of such Association is composed of six (6) members, of whom 5 being a quorum, were present at a meeting thereof duly called and held on the 5th day of December, 1983; that the foregoing resolution was adopted at such meeting by the vote shown above; and that said resolution has not been rescinded or amended in any way.

Dated this 5th day of December, 1983.

Betty Beasley



CLAY CITY ANNEXATION DESCRIPTION

A tract of land beginning at the centerline of the existing east abutment of the old Kentucky Union Railway bridge, said bridge once spanning the Red River but now removed; thence following the line of low water and the meanders of said river upstream to a point opposite the centerline of Skinner Branch; thence running in a westerly direction across said river and with the meanders of the centerline of Skinner Branch to the intersection of said centerline and the west right-of-way line of Kentucky Highway 11; thence running in a southerly direction with said west right-of-way line to the intersection of said right-of-way line and the south right-of-way line of the Waltersville Road; thence running in a westerly direction with said south right-of-way line to a point where the said road turns to the south; thence continuing across said road in a straight line to a point in the west right-of-way line of said road, said point also being the intersection of said west right-of-way line and the south right-of-way line of the Smith Branch Road; thence running in a northwesterly direction with said south right-of-way line to the end of an existing steel culvert carrying Smith Branch under the road; thence S 55° 16' 55" W with said Smith Branch 23.89 feet; thence S 40° 44' 13" W with said Branch 122.17 feet to a point on the east bank of said Branch; thence following a drainage ditch for the following two calls: N 67° 55' 44" W 384.07 feet; N 31° 12' 13" W 29.71 feet; thence N 28° 39' 18" E along the west side the Dewayne Kinser property 238.41 feet; thence N 74° 38' 53" W 405.33 feet to the base of a hill; thence S 72° 49' 10" W

220.18 feet; thence S 17° 52' 02" W 209.58 feet to a concrete marker located in the north right-of-way line of Kentucky Highway 15; thence S 79° 45' 57" W 327.29 feet to a point on the end of a concrete box culvert carrying Brush Creek under Kentucky Highway 15, said point being in the centerline of said culvert; thence following the centerline and the meanders of said Brush Creek to the confluence of Red River and continuing across Red River to the low water line of said river on its east bank; thence following the low water line and the meanders of said river upstream to the point of beginning, containing 112.54 acres.

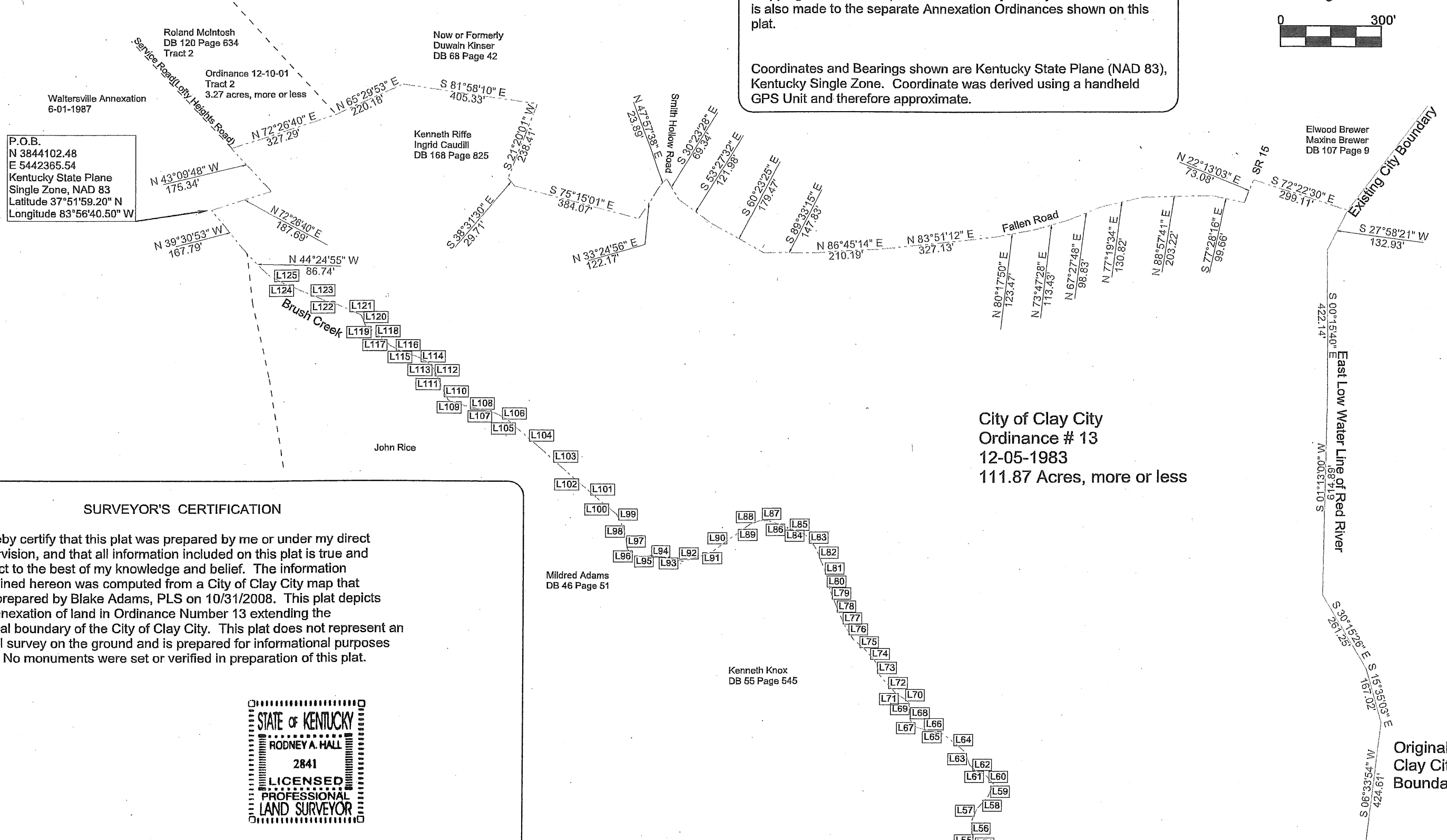
Grid North



Statement of Resources

The Property Platted hereon was computed as shown on a Map of the City of Clay City prepared and Certified by Blake Adams, PLS on 10/31/2008, with the exception of the center of Brush Creek, which is based on a current survey (conducted 7/14/2014 by Hall Mapping Services, LLC) and tied to Survey Quality Control. Reference is also made to the separate Annexation Ordinances shown on this plat.

Coordinates and Bearings shown are Kentucky State Plane (NAD 83), Kentucky Single Zone. Coordinate was derived using a handheld GPS Unit and therefore approximate.



P.O.B.  
N 3844102.48  
E 5442365.54  
Kentucky State Plane  
Single Zone, NAD 83  
Latitude 37°51'59.20" N  
Longitude 83°56'40.50" W

Roland McIntosh  
DB 120 Page 634  
Tract 2  
Ordinance 12-10-01  
Tract 2  
3.27 acres, more or less

Now or Formerly  
Duwain Kinser  
DB 68 Page 42

Kenneth Riffe  
Ingrid Caudill  
DB 168 Page 825

Elwood Brewer  
Maxine Brewer  
DB 107 Page 9

City of Clay City  
Ordinance # 13  
12-05-1983  
111.87 Acres, more or less

SURVEYOR'S CERTIFICATION

I hereby certify that this plat was prepared by me or under my direct supervision, and that all information included on this plat is true and correct to the best of my knowledge and belief. The information contained hereon was computed from a City of Clay City map that was prepared by Blake Adams, PLS on 10/31/2008. This plat depicts an annexation of land in Ordinance Number 13 extending the original boundary of the City of Clay City. This plat does not represent an actual survey on the ground and is prepared for informational purposes only. No monuments were set or verified in preparation of this plat.



Mildred Adams  
DB 46 Page 51

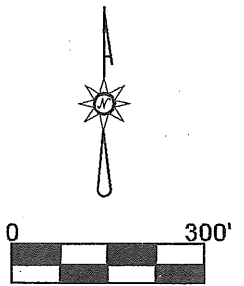
Kenneth Knox  
DB 55 Page 545

**Statement of Resources**

The Property Platted hereon was computed as shown on a Map of the City of Clay City prepared and Certified by Blake Adams, PLS on 10/31/2008, with the exception of the center of Brush Creek, which is based on a current survey (conducted 7/14/2014 by Hall Mapping Services, LLC) and tied to Survey Quality Control. Reference is also made to the separate Annexation Ordinances shown on this plat.

Coordinates and Bearings shown are Kentucky State Plane (NAD 83), Kentucky Single Zone. Coordinate was derived using a handheld GPS Unit and therefore approximate.

**Grid North**



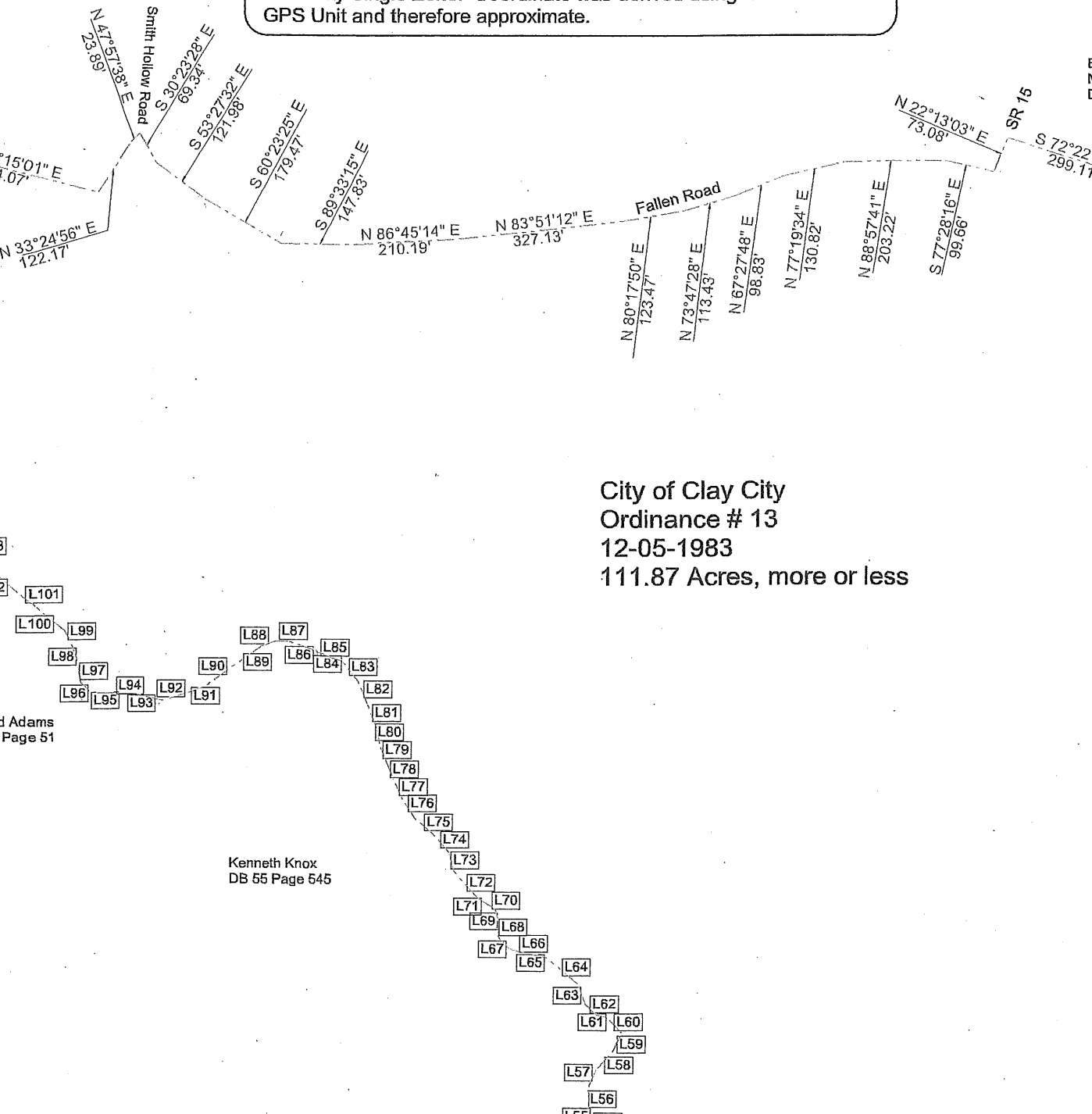
Elwood Brewer  
Maxine Brewer  
DB 107 Page 8

**Existing City Boundary**

**East Low Water Line of Red River**

**Original Clay City Boundary**

**City of Clay City  
Ordinance # 13  
12-05-1983  
111.87 Acres, more or less**



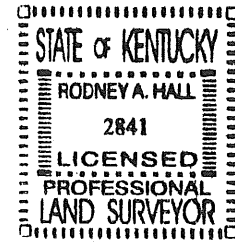
**Vicinity Map  
--no scale--**

Blake Adams  
DB Page 51

Kenneth Knox  
DB 55 Page 545

SURVEYOR'S CERTIFICATION

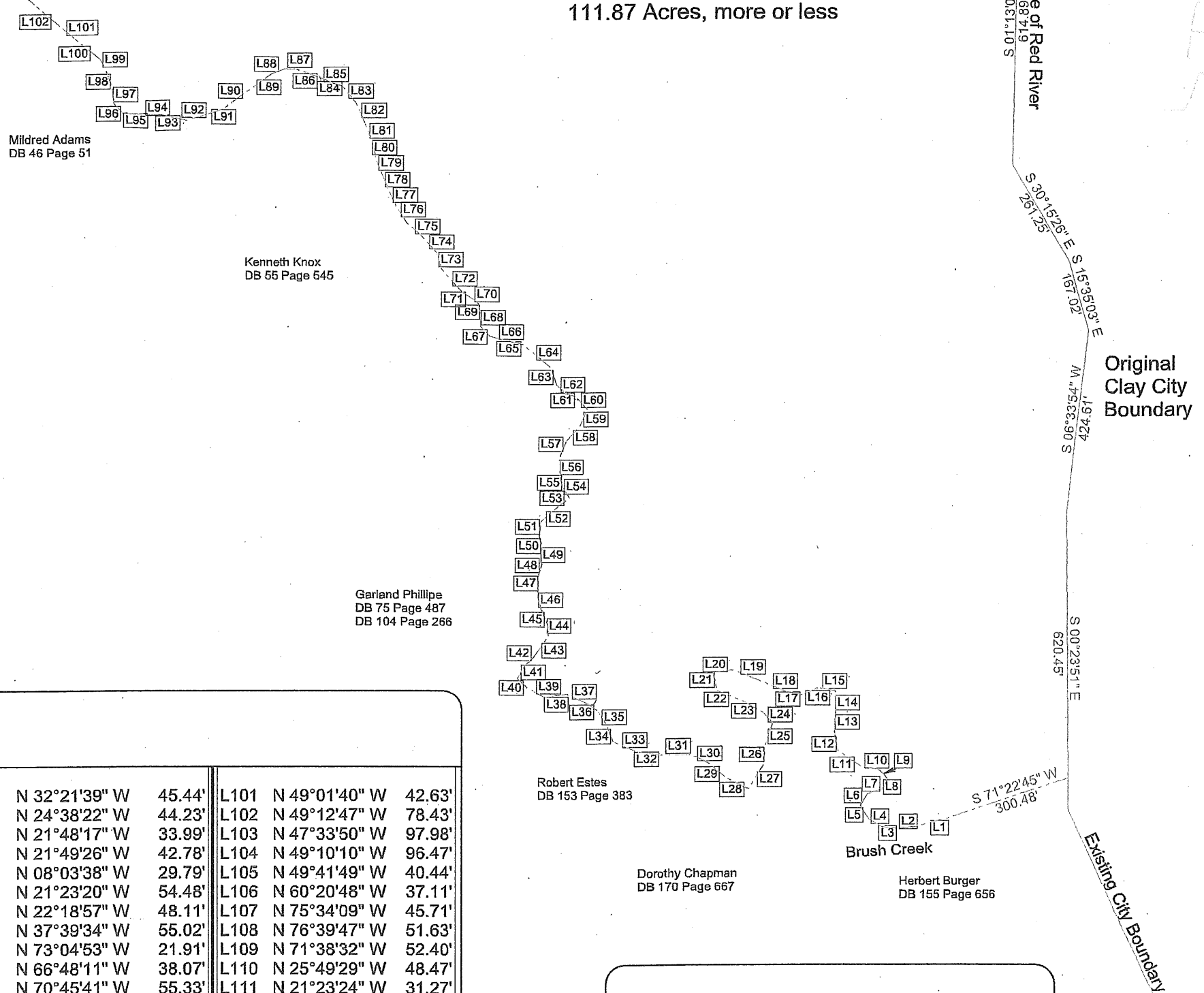
I hereby certify that this plat was prepared by me or under my direct supervision, and that all information included on this plat is true and correct to the best of my knowledge and belief. The information contained hereon was computed from a City of Clay City map that was prepared by Blake Adams, PLS on 10/31/2008. This plat depicts an annexation of land in Ordinance Number 13 extending the original boundary of the City of Clay City. This plat does not represent an actual survey on the ground and is prepared for informational purposes only. No monuments were set or verified in preparation of this plat.



*Rodney A. Hall*  
Signature

2841  
PLS Number

9/15/2014  
Date



Line Table  
Center of Brush Creek

L1 S 74°36'00" W 67.57'	L26 S 03°24'42" W 40.54'	L51 N 05°19'42" E 33.95'	L76 N 32°21'39" W 45.44'	L101 N 49°01'40" W 42.63'
L2 S 86°34'17" W 46.73'	L27 S 31°25'50" W 66.27'	L52 N 48°34'17" E 41.98'	L77 N 24°38'22" W 44.23'	L102 N 49°12'47" W 78.43'
L3 N 84°03'14" W 34.85'	L28 N 62°25'28" W 61.52'	L53 N 52°24'12" E 45.87'	L78 N 21°48'17" W 33.99'	L103 N 47°33'50" W 97.98'
L4 N 58°30'12" W 32.57'	L29 N 50°05'38" W 51.79'	L54 N 33°16'35" W 32.61'	L79 N 21°49'26" W 42.78'	L104 N 49°10'10" W 96.47'
L5 N 33°01'29" W 37.83'	L30 N 64°12'38" W 42.93'	L55 N 11°55'24" W 23.19'	L80 N 08°03'38" W 29.79'	L105 N 49°41'49" W 40.44'
L6 N 31°53'26" E 31.92'	L31 S 89°18'03" W 65.15'	L56 N 00°07'23" W 48.74'	L81 N 21°23'20" W 54.48'	L106 N 60°20'48" W 37.11'
L7 N 71°20'15" E 37.82'	L32 N 81°07'16" W 60.21'	L57 N 24°05'58" E 38.17'	L82 N 22°18'57" W 48.11'	L107 N 75°34'09" W 45.71'
L8 N 24°21'48" E 25.28'	L33 N 66°19'58" W 57.69'	L58 N 42°06'23" E 47.24'	L83 N 37°39'34" W 55.02'	L108 N 76°39'47" W 51.63'
L9 N 42°05'42" W 27.76'	L34 N 21°58'12" W 41.83'	L59 N 24°45'39" E 40.50'	L84 N 73°04'53" W 21.91'	L109 N 71°38'32" W 52.40'
L10 N 79°44'24" W 43.52'	L35 N 30°11'14" W 39.76'	L60 N 42°27'29" W 42.45'	L85 N 66°48'11" W 38.07'	L110 N 25°49'29" W 48.47'
L11 N 54°52'11" W 65.79'	L36 N 56°40'45" W 30.75'	L61 N 75°19'50" W 24.18'	L86 N 70°45'41" W 55.33'	L111 N 21°23'24" W 31.27'
L12 N 11°57'02" W 40.18'	L37 N 65°38'51" W 51.82'	L62 N 44°20'29" W 31.72'	L87 N 87°43'42" W 24.08'	L112 N 27°24'17" W 27.07'
L13 N 03°17'55" E 51.49'	L38 S 82°00'29" W 52.07'	L63 N 19°37'13" W 41.00'	L88 S 69°37'17" W 33.42'	L113 N 44°19'16" W 19.65'
L14 N 01°10'50" W 49.00'	L39 N 60°21'23" W 48.10'	L64 N 50°16'56" W 83.27'	L89 S 54°09'32" W 80.74'	L114 N 59°58'02" W 37.58'
L15 N 81°54'58" W 40.88'	L40 N 48°29'30" W 29.30'	L65 N 77°09'16" W 44.67'	L90 S 53°56'49" W 60.43'	L115 N 71°51'34" W 53.15'
L16 S 64°59'04" W 39.56'	L41 N 29°30'26" E 35.33'	L66 N 75°36'40" W 33.63'	L91 S 70°59'03" W 40.63'	L116 N 62°53'54" W 34.41'
L17 N 77°04'49" W 39.26'	L42 N 45°53'42" E 26.27'	L67 N 43°04'58" W 32.64'	L92 S 72°56'08" W 47.03'	L117 N 47°49'49" W 25.35'
L18 N 67°13'42" W 67.35'	L43 N 35°17'58" E 60.86'	L68 N 01°06'17" E 28.15'	L93 N 76°27'03" W 55.87'	L118 N 50°33'48" W 47.55'
L19 N 68°14'34" W 64.79'	L44 N 04°17'07" W 28.27'	L69 N 13°36'24" W 25.20'	L94 N 86°28'16" W 45.87'	L119 N 53°33'24" W 24.84'
L20 S 81°48'33" W 45.42'	L45 N 22°19'06" W 37.60'	L70 N 51°02'48" W 14.06'	L95 S 89°42'31" W 46.91'	L120 N 20°46'34" W 32.20'
L21 S 10°37'07" E 41.55'	L46 N 14°24'10" W 32.87'	L71 N 56°55'48" W 33.26'	L96 N 44°04'15" W 30.67'	L121 N 65°26'37" W 69.16'
L22 S 67°03'19" E 67.08'	L47 N 00°44'07" E 44.22'	L72 N 41°25'49" W 72.17'	L97 N 07°57'04" W 43.09'	L122 N 70°55'25" W 57.66'
L23 S 61°11'25" E 49.93'	L48 N 15°47'02" E 34.14'	L73 N 14°35'58" W 36.83'	L98 N 19°46'26" W 46.14'	L123 N 67°06'58" W 58.81'
L24 S 42°08'03" E 35.20'	L49 N 02°20'50" W 42.01'	L74 N 39°38'41" W 49.76'	L99 N 31°48'15" W 24.09'	L124 N 66°23'49" W 65.54'
L25 S 18°17'51" W 59.10'	L50 N 16°49'56" W 19.61'	L75 N 48°38'15" W 51.49'	L100 N 50°55'06" W 74.92'	L125 N 60°50'00" W 56.60'

**LEGEND**

P.O.B.=Point of Beginning

----- Property Line and/or Ordinance Line

----- Adjoiner Line and/or Ordinance Line

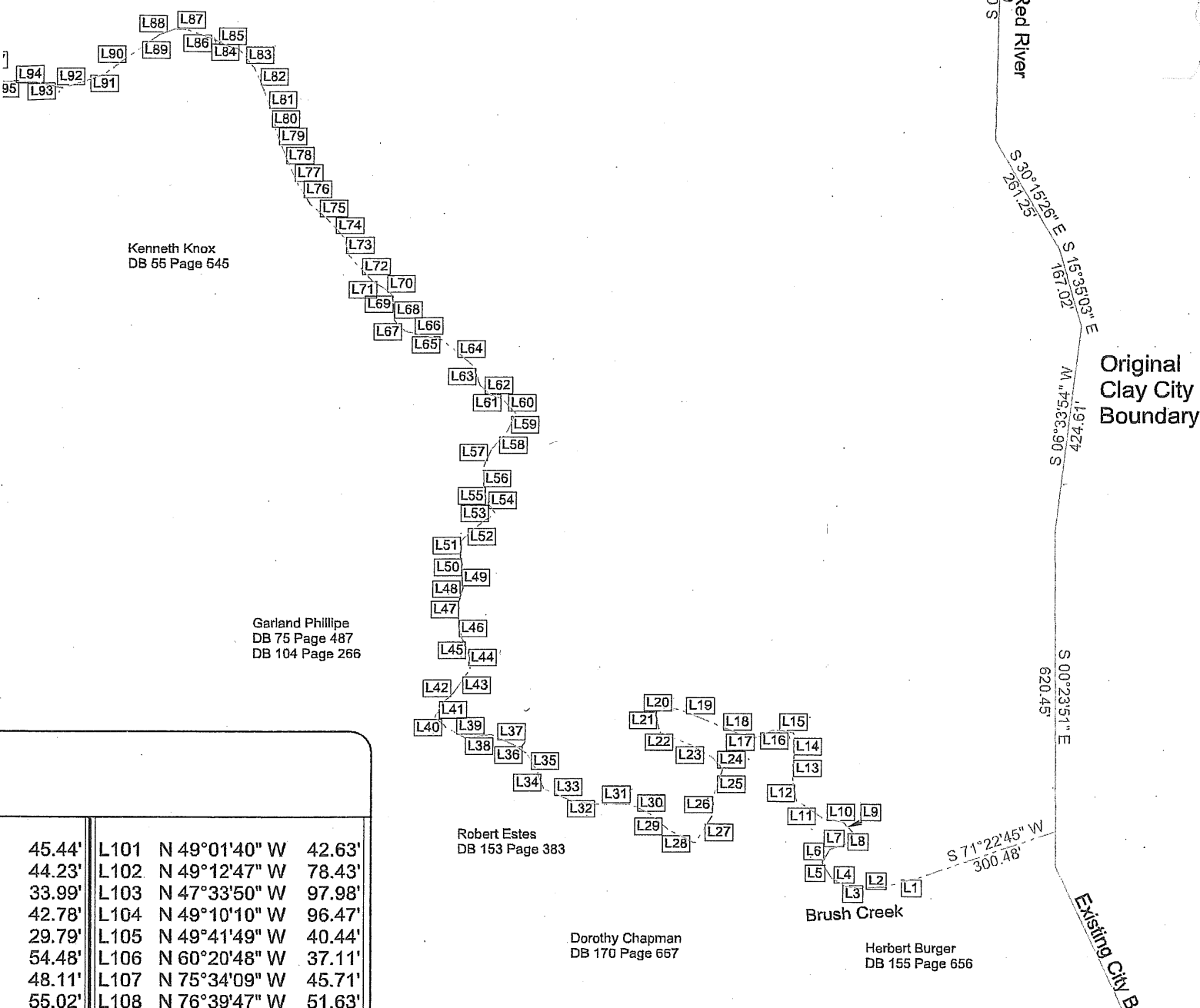
----- Existing Corporate Boundary Line

111.87 Acres, more or less

Original Clay City Boundary

Existing City Boundary

111.87 Acres, more or less



Vicinity Map  
--no scale--

45.44'	L101	N 49°01'40" W	42.63'
44.23'	L102	N 49°12'47" W	78.43'
33.99'	L103	N 47°33'50" W	97.98'
42.78'	L104	N 49°10'10" W	96.47'
29.79'	L105	N 49°41'49" W	40.44'
54.48'	L106	N 60°20'48" W	37.11'
48.11'	L107	N 75°34'09" W	45.71'
55.02'	L108	N 76°39'47" W	51.63'
21.91'	L109	N 71°38'32" W	52.40'
38.07'	L110	N 25°49'29" W	48.47'
55.33'	L111	N 21°23'24" W	31.27'
24.08'	L112	N 27°24'17" W	27.07'
33.42'	L113	N 44°19'16" W	19.65'
80.74'	L114	N 59°58'02" W	37.58'
60.43'	L115	N 71°51'34" W	53.15'
40.63'	L116	N 62°53'54" W	34.41'
47.03'	L117	N 47°49'49" W	25.35'
55.87'	L118	N 50°33'48" W	47.55'
45.87'	L119	N 53°33'24" W	24.84'
46.91'	L120	N 20°46'34" W	32.20'
30.67'	L121	N 65°26'37" W	69.16'
43.09'	L122	N 70°55'25" W	57.66'
46.14'	L123	N 67°06'58" W	58.81'
24.09'	L124	N 66°23'49" W	65.54'
74.92'	L125	N 60°50'00" W	56.60'

**LEGEND**

P.O.B.=Point of Beginning

----- Property Line and/or Ordinance Line

----- Adjoiner Line and/or Ordinance Line

----- Existing Corporate Boundary Line

Annexation Plat  
of  
**Ordinance #13**  
for  
**City of Clay City**

4651 Main Street  
Clay City, KY  
PH: (606)663-2224

---

**Exhibit A**

---

Hall Mapping Services, LLC  
c/o Rodney A. Hall  
1053 Frames Branch Road  
Clay City, KY 40312-9624  
PH: (606)663-8231

---

FILE NAME ON13Rev3.trv		
SCALE 300 Ft/In	DATE 9-15-2014	DRAWN BY RAH
JOB 11-065	REVISION 1/3	SHEET 1/1