

ORDINANCE NO. 90-557

AN ORDINANCE ANNEXING CERTAIN UNINCORPORATED
TERRITORIES WITHIN THE COUNTY OF CAMPBELL, KENTUCKY
AND CONTIGUOUS TO THE PRESENT BOUNDARY LINES OF
THE CITY OF COLD SPRING, KENTUCKY, AND DEFINING
BY METES AND BOUNDS THE TERRITORY ANNEXED

WHEREAS, Kentucky Revised Statute 81A.410 authorizes and delegates city legislative bodies the authority to annex territories; and,

WHEREAS, Kentucky Revised Statute 81A.420 provides the manner in which said annexation should be accomplished; and,

WHEREAS, the property herein described is adjacent to and contiguous to the city's boundaries; and,

WHEREAS, by reason of population density, commercial, industrial, institutional or governmental use of land, or subdivision of land said property is urban in character or suitable for development for urban purposes without unreasonable delay; and,

WHEREAS, the City Council of the City of Cold Spring has by Ordinance 89-547 proposed to annex the herein mentioned territory.

NOW, THEREFORE, BE IT ORDAINED BY THE CITY OF COLD SPRING, KENTUCKY:

SECTION ONE

That no petition has been received by the Mayor in opposition to the proposal to annex the territory as set forth in Ordinance No. 89-547.

SECTION TWO

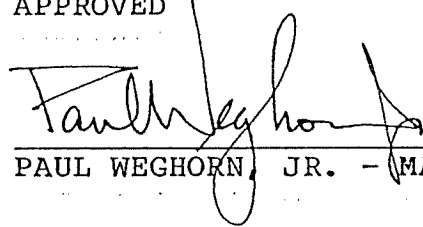
That the City of Cold Spring does hereby and herewith annex to its present boundaries and include the same within the territorial limits of the City of Cold Spring, Campbell County, Kentucky, the unincorporated land and area, located in the County of Campbell, Commonwealth of Kentucky, and more particularly described in the attached DESCRIPTION FOR ANNEXATION, which is made a part hereof.

SECTION THREE

That this ordinance shall take effect and be in full

force from and after its passage, publication and recording,
according to law.

APPROVED



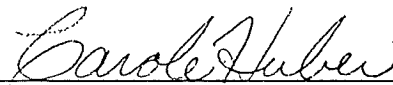
PAUL WEGHORN, JR. - MAYOR

FIRST READING: 3/20/90

SECOND READING: 4/05/90

ADOPTED: 4/05/90

ATTEST:



CAROLE HUBER, CITY CLERK

ANNEXATION AREA

SITUATE IN CAMPBELL COUNTY, KENTUCKY AND BEING MORE PARTICULARLY DESCRIBED AS FOLLOWS:

BEGINNING AT THE SOUTHWEST CORNER OF THE PROPERTY DESCRIBED IN DEED BOOK 398, PAGE 589 OF THE CAMPBELL COUNTY RECORDER'S OFFICE, SAID POINT ALSO BEING LOCATED IN THE EXISTING CORPORATION LINE OF THE CITY OF COLD SPRING, SAID POINT ALSO BEING THE TRUE POINT OF BEGINNING FOR THIS DESCRIPTION:

THENCE NORTH 64 DEGREES 13 MINUTES 28 SECONDS EAST, 600.00 FEET;
THENCE SOUTH 10 DEGREES 26 MINUTES 19 SECONDS EAST, 721.77 FEET;
THENCE NORTH 79 DEGREES 15 MINUTES 19 SECONDS EAST, 199.06 FEET;
THENCE SOUTH 08 DEGREES 17 MINUTES 07 SECONDS EAST, 523.25 FEET;
THENCE SOUTH 71 DEGREES 42 MINUTES 53 SECONDS WEST, 285.38 FEET;
THENCE SOUTH 27 DEGREES 33 MINUTES 00 SECONDS WEST, 475.05 FEET
TO THE CENTERLINE OF POOLE'S CREEK ROAD No. 2;
THENCE, WITH THE CENTERLINE OF SAID ROAD, THE FOLLOWING COURSES
AND DISTANCES:

NORTH 55 DEGREES 21 MINUTES 33 SECONDS WEST, 39.38 FEET;
DUE WEST, 32.99 FEET;
SOUTH 86 DEGREES 41 MINUTES 53 SECONDS WEST, 30.68 FEET;
SOUTH 70 DEGREES 39 MINUTES 55 SECONDS WEST, 35.58 FEET;
SOUTH 69 DEGREES 46 MINUTES 31 SECONDS WEST, 35.78 FEET;
SOUTH 72 DEGREES 53 MINUTES 49 SECONDS WEST, 90.14 FEET;
THENCE NORTH 28 DEGREES 24 MINUTES 00 SECONDS WEST, 236.02 FEET;
THENCE SOUTH 70 DEGREES 09 MINUTES 00 SECONDS WEST, 521.20 FEET;
THENCE SOUTH 12 DEGREES 22 MINUTES 00 SECONDS WEST, 530.00 FEET;
THENCE SOUTH 49 DEGREES 03 MINUTES 50 SECONDS EAST, 387.14 FEET;
THENCE SOUTH 70 DEGREES 14 MINUTES 13 SECONDS EAST, 107.92 FEET;
THENCE SOUTH 11 DEGREES 07 MINUTES 49 SECONDS EAST, 1222.56 FEET;
THENCE NORTH 76 DEGREES 04 MINUTES 40 SECONDS EAST, 122.50 FEET
TO THE CENTERLINE OF MURMAN ROAD;

THENCE, WITH THE CENTERLINE OF SAID ROAD, THE FOLLOWING COURSES
AND DISTANCES:

SOUTH 10 DEGREES 53 MINUTES 07 SECONDS WEST, 52.00 FEET;
SOUTH 15 DEGREES 38 MINUTES 19 SECONDS WEST, 131.69 FEET;
SOUTH 04 DEGREES 26 MINUTES 52 SECONDS WEST, 55.28 FEET;
SOUTH 08 DEGREES 07 MINUTES 49 SECONDS EAST, 156.70 FEET;
THENCE SOUTH 47 DEGREES 21 MINUTES 15 SECONDS WEST, 189.00 FEET;
THENCE SOUTH 51 DEGREES 25 MINUTES 34 SECONDS WEST, 592.19 FEET;
THENCE NORTH 44 DEGREES 52 MINUTES 20 SECONDS WEST, 724.92 FEET;
THENCE NORTH 71 DEGREES 43 MINUTES 45 SECONDS WEST, 390.93 FEET;
THENCE NORTH 50 DEGREES 38 MINUTES 30 SECONDS WEST, 742.18 FEET;
THENCE NORTH 49 DEGREES 54 MINUTES 20 SECONDS WEST, 515.53 FEET;
THENCE SOUTH 44 DEGREES 02 MINUTES 17 SECONDS WEST, 250.00 FEET;
THENCE SOUTH 41 DEGREES 24 MINUTES 14 SECONDS WEST, 132.00 FEET;
THENCE SOUTH 21 DEGREES 37 MINUTES 31 SECONDS EAST, 977.62 FEET;
THENCE SOUTH 74 DEGREES 52 MINUTES 29 SECONDS WEST, 1320.00 FEET;
THENCE SOUTH 53 DEGREES 10 MINUTES 07 SECONDS EAST, 508.20 FEET;

COLD SPRING ZONE DESIGNATION DESCRIPTION, PAGE 1

THENCE SOUTH 36 DEGREES 26 MINUTES 12 SECONDS WEST, 670.31 FEET
TO THE CENTERLINE OF ROUTE 9;

THENCE, WITH THE CENTERLINE OF SAID ROUTE, THE FOLLOWING COURSES
AND DISTANCES:

SOUTH 49 DEGREES 40 MINUTES 26 SECONDS EAST, 200.64 FEET;

SOUTH 40 DEGREES 40 MINUTES 26 SECONDS EAST, 231.00 FEET;

SOUTH 35 DEGREES 10 MINUTES 26 SECONDS EAST, 257.40 FEET;

SOUTH 47 DEGREES 10 MINUTES 26 SECONDS EAST, 23.20 FEET;

THENCE SOUTH 47 DEGREES 19 MINUTES 34 SECONDS WEST, 86.47 FEET;

THENCE SOUTH 53 DEGREES 40 MINUTES 26 SECONDS EAST, 214.50 FEET;

THENCE SOUTH 44 DEGREES 53 MINUTES 30 SECONDS WEST, 399.66 FEET
TO THE BANK OF THE LICKING RIVER;

THENCE, WITH THE BANK OF THE LICKING RIVER, THE FOLLOWING COURSES
AND DISTANCES:

NORTH 36 DEGREES 10 MINUTES 26 SECONDS WEST, 429.00 FEET;

NORTH 63 DEGREES 10 MINUTES 26 SECONDS WEST, 924.00 FEET;

NORTH 65 DEGREES 22 MINUTES 43 SECONDS WEST, 330.00 FEET;

NORTH 60 DEGREES 46 MINUTES 10 SECONDS WEST, 696.63 FEET;

THENCE NORTH 49 DEGREES 39 MINUTES 17 SECONDS EAST, 705.00 FEET
TO THE CENTERLINE OF ROUTE 9;

THENCE, WITH THE CENTERLINE OF SAID ROUTE, THE FOLLOWING COURSES
AND DISTANCES:

NORTH 69 DEGREES 32 MINUTES 43 SECONDS WEST, 164.00 FEET;

NORTH 67 DEGREES 32 MINUTES 43 SECONDS WEST, 167.00 FEET;

NORTH 63 DEGREES 32 MINUTES 43 SECONDS WEST, 90.00 FEET;

NORTH 57 DEGREES 32 MINUTES 43 SECONDS WEST, 115.00 FEET;

THENCE NORTH 35 DEGREES 48 MINUTES 26 SECONDS EAST, 871.04 FEET;

THENCE NORTH 49 DEGREES 17 MINUTES 56 SECONDS WEST, 730.11 FEET
TO THE OLD CENTERLINE OF POOLE'S CREEK ROAD No. 2;

THENCE, WITH THE CENTERLINE OF SAID ROAD, THE FOLLOWING COURSES
AND DISTANCES:

NORTH 68 DEGREES 37 MINUTES 29 SECONDS EAST, 557.86 FEET;

NORTH 73 DEGREES 22 MINUTES 29 SECONDS EAST, 346.50 FEET;

THENCE SOUTH 15 DEGREES 42 MINUTES 58 SECONDS EAST, 341.85 FEET;

THENCE NORTH 56 DEGREES 32 MINUTES 04 SECONDS EAST, 260.25 FEET;

THENCE NORTH 15 DEGREES 43 MINUTES 57 SECONDS WEST, 305.80 FEET
TO THE CENTERLINE OF POOLE'S CREEK ROAD No. 2;

THENCE, WITH THE CENTERLINE OF SAID ROAD, THE FOLLOWING COURSES
AND DISTANCES:

NORTH 86 DEGREES 37 MINUTES 55 SECONDS EAST, 151.56 FEET;

NORTH 54 DEGREES 52 MINUTES 09 SECONDS EAST, 219.04 FEET;

THENCE SOUTH 65 DEGREES 10 MINUTES 37 SECONDS EAST, 622.30 FEET;

THENCE NORTH 27 DEGREES 55 MINUTES 23 SECONDS EAST, 211.00 FEET;

THENCE SOUTH 58 DEGREES 47 MINUTES 58 SECONDS EAST, 401.94 FEET;

THENCE NORTH 37 DEGREES 13 MINUTES 02 SECONDS EAST, 210.00 FEET;

THENCE NORTH 29 DEGREES 31 MINUTES 58 SECONDS WEST, 1096.50 FEET;

THENCE SOUTH 22 DEGREES 43 MINUTES 02 SECONDS WEST, 84.00 FEET;

THENCE SOUTH 34 DEGREES 58 MINUTES 02 SECONDS WEST, 313.00 FEET;

THENCE SOUTH 27 DEGREES 49 MINUTES 52 SECONDS WEST, 70.79 FEET;

THENCE SOUTH 30 DEGREES 40 MINUTES 44 SECONDS WEST, 61.08 FEET;

THENCE NORTH 56 DEGREES 17 MINUTES 41 SECONDS WEST, 230.97 FEET
TO THE CENTERLINE OF POOLE'S CREEK ROAD No. 2;

THENCE, WITH THE CENTERLINE OF SAID ROAD, NORTH 05 DEGREES 15
MINUTES 47 SECONDS EAST, 150.00 FEET;

THENCE NORTH 52 DEGREES 09 MINUTES 13 SECONDS WEST, 345.00 FEET;

THENCE SOUTH 09 DEGREES 47 MINUTES 50 SECONDS WEST, 177.53 FEET;

THENCE SOUTH 56 DEGREES 17 MINUTES 41 SECONDS EAST, 162.00 FEET;
 THENCE SOUTH 33 DEGREES 57 MINUTES 19 SECONDS WEST, 210.00 FEET;
 THENCE NORTH 56 DEGREES 17 MINUTES 41 SECONDS WEST, 596.33 FEET;
 THENCE SOUTH 72 DEGREES 45 MINUTES 00 SECONDS WEST, 577.50 FEET;
 THENCE NORTH 83 DEGREES 21 MINUTES 21 SECONDS WEST, 476.85 FEET;
 THENCE SOUTH 29 DEGREES 50 MINUTES 34 SECONDS WEST, 1055.87 FEET;
 THENCE NORTH 73 DEGREES 19 MINUTES 52 SECONDS WEST, 143.07 FEET;
 THENCE NORTH 31 DEGREES 45 MINUTES 58 SECONDS EAST, 1041.21 FEET
 TO THE NORTH RIGHT OF WAY LINE OF THE A-A HIGHWAY;

THENCE, WITH SAID NORTH RIGHT OF WAY LINE, NORTH 84 DEGREES 47
 MINUTES 39 SECONDS WEST, 99.69 FEET;

THENCE NORTH 81 DEGREES 17 MINUTES 39 SECONDS WEST, 470.30 FEET;

THENCE SOUTH 88 DEGREES 42 MINUTES 21 SECONDS WEST, 266.40 FEET;

THENCE SOUTH 18 DEGREES 43 MINUTES 21 SECONDS WEST, 875.63 FEET

TO THE NORTH RIGHT OF WAY LINE OF THE A-A HIGHWAY;

THENCE, WITH SAID NORTH RIGHT OF WAY LINE, THE FOLLOWING COURSES
 AND DISTANCES:

NORTH 76 DEGREES 37 MINUTES 18 SECONDS WEST, 293.79 FEET;

NORTH 70 DEGREES 06 MINUTES 23 SECONDS WEST, 335.25 FEET;

SOUTH 41 DEGREES 04 MINUTES 45 SECONDS WEST, 124.11 FEET;

NORTH 77 DEGREES 30 MINUTES 07 SECONDS WEST, 107.10 FEET;

NORTH 47 DEGREES 56 MINUTES 38 SECONDS WEST, 148.50 FEET;

NORTH 32 DEGREES 11 MINUTES 38 SECONDS WEST, 231.00 FEET;

NORTH 64 DEGREES 11 MINUTES 38 SECONDS WEST, 66.00 FEET;

NORTH 20 DEGREES 36 MINUTES 14 SECONDS EAST, 363.00 FEET;

NORTH 17 DEGREES 36 MINUTES 14 SECONDS EAST, 261.52 FEET

TO THE CENTERLINE OF POOLE'S CREEK ROAD No. 1;

THENCE, WITH THE CENTERLINE OF SAID ROAD, NORTH 36 DEGREES 06
 MINUTES 14 SECONDS EAST, 163.90 FEET;

THENCE SOUTH 47 DEGREES 53 MINUTES 46 SECONDS EAST, 209.00 FEET;

THENCE NORTH 36 DEGREES 06 MINUTES 14 SECONDS EAST, 209.00 FEET;

THENCE SOUTH 47 DEGREES 53 MINUTES 46 SECONDS EAST, 731.50 FEET;

THENCE NORTH 42 DEGREES 43 MINUTES 16 SECONDS EAST, 166.33 FEET;

THENCE NORTH 47 DEGREES 43 MINUTES 51 SECONDS EAST, 965.54 FEET;

THENCE NORTH 70 DEGREES 28 MINUTES 47 SECONDS EAST, 603.85 FEET;

THENCE NORTH 68 DEGREES 35 MINUTES 38 SECONDS EAST, 448.40 FEET;

THENCE NORTH 44 DEGREES 29 MINUTES 19 SECONDS WEST, 596.58 FEET

TO THE CENTERLINE OF POOLE'S CREEK No. 1;

THENCE, WITH THE CENTERLINE OF SAID ROAD, THE FOLLOWING COURSES
 AND DISTANCES:

NORTH 60 DEGREES 30 MINUTES 00 SECONDS EAST, 98.12 FEET;

NORTH 59 DEGREES 22 MINUTES 28 SECONDS EAST, 85.57 FEET;

NORTH 57 DEGREES 38 MINUTES 00 SECONDS EAST, 49.52 FEET;

NORTH 57 DEGREES 34 MINUTES 03 SECONDS EAST, 67.00 FEET;

NORTH 53 DEGREES 44 MINUTES 46 SECONDS EAST, 109.57 FEET;

NORTH 53 DEGREES 13 MINUTES 09 SECONDS EAST, 75.75 FEET;

NORTH 43 DEGREES 50 MINUTES 19 SECONDS EAST, 133.69 FEET;

THENCE SOUTH 37 DEGREES 44 MINUTES 40 SECONDS EAST, 366.75 FEET;

THENCE NORTH 40 DEGREES 04 MINUTES 33 SECONDS EAST, 125.29 FEET;

THENCE NORTH 37 DEGREES 02 MINUTES 04 SECONDS WEST, 10.00 FEET;

THENCE NORTH 38 DEGREES 29 MINUTES 06 SECONDS EAST, 51.48 FEET;

THENCE SOUTH 37 DEGREES 45 MINUTES 54 SECONDS EAST, 143.89 FEET;

THENCE NORTH 73 DEGREES 26 MINUTES 52 SECONDS EAST, 32.78 FEET;

THENCE NORTH 36 DEGREES 23 MINUTES 08 SECONDS WEST, 487.80 FEET;

THENCE SOUTH 37 DEGREES 41 MINUTES 52 SECONDS WEST, 76.00 FEET;

THENCE NORTH 37 DEGREES 18 MINUTES 08 SECONDS WEST, 101.60 FEET;

THENCE NORTH 78 DEGREES 18 MINUTES 34 SECONDS EAST, 341.60 FEET;
 THENCE NORTH 10 DEGREES 58 MINUTES 08 SECONDS WEST, 45.20 FEET
 TO THE CENTERLINE OF POOLE'S CREEK ROAD No. 1;

THENCE, WITH THE CENTERLINE OF SAID ROAD, NORTH 69 DEGREES 56
 MINUTES 52 SECONDS EAST, 175.00 FEET;

THENCE SOUTH 19 DEGREES 14 MINUTES 08 SECONDS EAST, 71.30 FEET;

THENCE NORTH 79 DEGREES 21 MINUTES 52 SECONDS EAST, 7.75 FEET;

THENCE SOUTH 19 DEGREES 13 MINUTES 08 SECONDS EAST, 155.00 FEET;

THENCE NORTH 50 DEGREES 26 MINUTES 52 SECONDS EAST, 316.50 FEET;

THENCE NORTH 79 DEGREES 21 MINUTES 37 SECONDS EAST, 489.95 FEET;

THENCE NORTH 10 DEGREES 37 MINUTES 46 SECONDS WEST, 717.75 FEET
 TO THE CENTERLINE OF POOLE'S CREEK ROAD No. 1;

THENCE, WITH THE CENTERLINE OF SAID ROAD, THE FOLLOWING COURSES
 AND DISTANCES:

NORTH 51 DEGREES 04 MINUTES 15 SECONDS EAST, 551.49 FEET;

NORTH 39 DEGREES 59 MINUTES 22 SECONDS EAST, 379.54 FEET;

NORTH 58 DEGREES 14 MINUTES 01 SECONDS EAST, 194.69 FEET;

NORTH 58 DEGREES 26 MINUTES 46 SECONDS EAST, 206.00 FEET;

NORTH 32 DEGREES 23 MINUTES 36 SECONDS EAST, 166.03 FEET;

NORTH 34 DEGREES 57 MINUTES 56 SECONDS EAST, 206.46 FEET;

NORTH 58 DEGREES 18 MINUTES 00 SECONDS EAST, 122.71 FEET;

NORTH 52 DEGREES 16 MINUTES 00 SECONDS EAST, 56.09 FEET;

NORTH 54 DEGREES 36 MINUTES 00 SECONDS EAST, 75.71 FEET;

NORTH 73 DEGREES 47 MINUTES 00 SECONDS EAST, 101.89 FEET;

NORTH 64 DEGREES 00 MINUTES 00 SECONDS EAST, 66.44 FEET;

NORTH 54 DEGREES 28 MINUTES 00 SECONDS EAST, 112.14 FEET;

NORTH 61 DEGREES 13 MINUTES 00 SECONDS EAST, 115.60 FEET;

NORTH 59 DEGREES 26 MINUTES 00 SECONDS EAST, 61.32 FEET;

NORTH 50 DEGREES 43 MINUTES 00 SECONDS EAST, 105.15 FEET;

NORTH 45 DEGREES 11 MINUTES 00 SECONDS EAST, 94.55 FEET;

NORTH 49 DEGREES 52 MINUTES 00 SECONDS EAST, 79.95 FEET;

NORTH 42 DEGREES 15 MINUTES 00 SECONDS EAST, 96.40 FEET;

THENCE SOUTH 49 DEGREES 21 MINUTES 00 SECONDS EAST, 350.54 FEET

THENCE SOUTH 10 DEGREES 45 MINUTES 39 SECONDS EAST, 559.68 FEET;

THENCE SOUTH 49 DEGREES 41 MINUTES 37 SECONDS WEST, 845.95 FEET;

THENCE NORTH 40 DEGREES 32 MINUTES 00 SECONDS WEST, 917.63 FEET
 TO THE SOUTH RIGHT OF WAY LINE OF POOLE'S CREEK ROAD No. 1;

THENCE, WITH THE SOUTH RIGHT OF WAY LINE OF SAID ROAD, THE
 FOLLOWING COURSES AND DISTANCES:

SOUTH 34 DEGREES 57 MINUTES 56 SECONDS WEST, 199.43 FEET;

SOUTH 32 DEGREES 23 MINUTES 36 SECONDS WEST, 171.26 FEET;

SOUTH 58 DEGREES 26 MINUTES 46 SECONDS WEST, 211.74 FEET;

SOUTH 58 DEGREES 14 MINUTES 01 SECONDS WEST, 190.63 FEET;

SOUTH 39 DEGREES 59 MINUTES 22 SECONDS WEST, 380.22 FEET;

THENCE SOUTH 39 DEGREES 23 MINUTES 26 SECONDS EAST, 296.31 FEET;

THENCE SOUTH 12 DEGREES 44 MINUTES 03 SECONDS EAST, 662.76 FEET;

THENCE SOUTH 62 DEGREES 07 MINUTES 14 SECONDS WEST, 330.00 FEET;

THENCE SOUTH 12 DEGREES 17 MINUTES 22 SECONDS EAST, 284.56 FEET;

THENCE SOUTH 73 DEGREES 21 MINUTES 54 SECONDS WEST, 1223.06 FEET;

THENCE SOUTH 13 DEGREES 15 MINUTES 00 SECONDS EAST, 236.74 FEET;

THENCE SOUTH 74 DEGREES 50 MINUTES 00 SECONDS WEST, 569.68 FEET
 TO THE SOUTH RIGHT OF WAY LINE OF DARLAS DRIVE;

THENCE, WITH THE SOUTH RIGHT OF WAY LINE OF SAID DRIVE, THE
 FOLLOWING COURSES AND DISTANCES:

SOUTH 45 DEGREES 20 MINUTES 00 SECONDS EAST, 212.91 FEET;

NORTH 81 DEGREES 15 MINUTES 00 SECONDS EAST, 268.55 FEET;

THENCE SOUTH 21 DEGREES 10 MINUTES 00 SECONDS EAST, 419.11 FEET;
THENCE NORTH 71 DEGREES 19 MINUTES 12 SECONDS EAST, 1362.49 FEET;
THENCE NORTH 11 DEGREES 35 MINUTES 27 SECONDS WEST, 659.65 FEET;
THENCE NORTH 78 DEGREES 50 MINUTES 13 SECONDS EAST, 450.32 FEET;
THENCE SOUTH 16 DEGREES 29 MINUTES 13 SECONDS EAST, 273.99 FEET;
THENCE NORTH 78 DEGREES 26 MINUTES 35 SECONDS EAST, 937.95 FEET;
THENCE NORTH 31 DEGREES 45 MINUTES 31 SECONDS EAST, 49.91 FEET;
THENCE NORTH 42 DEGREES 30 MINUTES 00 SECONDS EAST, 235.93 FEET;
THENCE SOUTH 01 DEGREES 42 MINUTES 59 SECONDS WEST, 553.36 FEET;
THENCE NORTH 85 DEGREES 15 MINUTES 00 SECONDS EAST, 300.50 FEET;
THENCE NORTH 11 DEGREES 30 MINUTES 00 SECONDS WEST, 830.00 FEET
TO THE CENTERLINE OF BUNING LANE;

THENCE, WITH THE CENTERLINE OF SAID LANE, THE FOLLOWING COURSES
AND DISTANCES:

NORTH 50 DEGREES 34 MINUTES 04 SECONDS EAST, 226.88 FEET;
NORTH 40 DEGREES 46 MINUTES 40 SECONDS EAST, 124.46 FEET;
NORTH 30 DEGREES 31 MINUTES 57 SECONDS EAST, 123.48 FEET;
THENCE SOUTH 13 DEGREES 30 MINUTES 23 SECONDS EAST, 561.25 FEET;
THENCE SOUTH 10 DEGREES 49 MINUTES 13 SECONDS EAST, 416.10 FEET;
THENCE NORTH 63 DEGREES 22 MINUTES 20 SECONDS EAST, 578.00 FEET
TO THE POINT OF BEGINNING.

CONTAINING 518.501 ACRES.

EXCEPTING FROM THE ABOVE DESCRIBED AREA, THE FOLLOWING DESCRIBED
PARCEL:

SITUATE IN CAMPBELL COUNTY, KENTUCKY, 0.5 MILES NORTH OF LICKING
PIKE ON POOLE'S CREEK ROAD No. 2, AND BEING PART OF PARCEL No.
ONE (1) AS RECORDED IN DEED BOOK 387, PAGE 576, GROUP 441-299 OF
THE CAMPBELL COUNTY RECORDS AT NEWPORT, KENTUCKY AND BEING MORE
PARTICULARLY DESCRIBED AS FOLLOWS:

BEGINNING AT POINT No. 1, SAID POINT BEING AN ORIGINAL CORNER TO
PARCEL No. 1 AND THE NORTH CORNER TO SAMUEL POPP'S 10 ACRE TRACT;
THENCE, ALONG THE WESTERLY LINE OF SAID PARCEL, NORTH 29 DEGREES
30 MINUTES WEST, 125.3 FEET TO THE CENTERLINE OF POOLE'S CREEK
ROAD No. 2; THENCE, ALONG THE CENTERLINE OF SAID ROAD, NORTH 71
DEGREES 05 MINUTES 30 SECONDS EAST, 102.50 FEET TO THE TRUE POINT
OF BEGINNING FOR THIS DESCRIPTION:

THENCE NORTH 21 DEGREES 34 MINUTES 20 SECONDS WEST, 36.25 FEET;
THENCE NORTH 48 DEGREES 08 MINUTES 30 SECONDS EAST, 98.55 FEET;
THENCE NORTH 31 DEGREES 57 MINUTES 30 SECONDS EAST, 48.74 FEET;
THENCE NORTH 10 DEGREES 41 MINUTES 45 SECONDS WEST, 115.61 FEET;
THENCE NORTH 67 DEGREES 08 MINUTES 20 SECONDS EAST, 144.46 FEET;
THENCE SOUTH 24 DEGREES 46 MINUTES 00 SECONDS EAST, 216.30 FEET
TO THE CENTERLINE OF POOLE'S CREEK ROAD No. 2;

THENCE, WITH THE CENTERLINE OF SAID ROAD, THE FOLLOWING COURSES
AND DISTANCES:

SOUTH 69 DEGREES 49 MINUTES 30 SECONDS WEST, 50.00 FEET;
SOUTH 64 DEGREES 35 MINUTES 40 SECONDS WEST, 119.33 FEET;
SOUTH 71 DEGREES 06 MINUTES 00 SECONDS WEST, 141.03 FEET TO
THE POINT OF BEGINNING.

CONTAINING 1.126 ACRES.

THE ABOVE DESCRIBED PARCEL BEING THE SAME PARCEL DESCRIBED IN DEED BOOK 158, PAGE 607 OF THE CAMPBELL COUNTY RECORDS.

ALSO EXCEPTING FROM THE ABOVE DESCRIBED AREA, THE FOLLOWING DESCRIBED PARCEL:

SITUATE IN CAMPBELL COUNTY, KENTUCKY, LYING ALONG THE SOUTH SIDE OF POOLE'S CREEK ROAD No. 2 AND BEING MORE PARTICULARLY DESCRIBED AS FOLLOWS:

BEGINNING AT THE SOUTHWEST CORNER OF THE TAIT BROADCASTING COMPANY'S 90.812 ACRE TRACT;
THENCE NORTH 24 DEGREES 50 MINUTES 28 SECONDS WEST, 612.32 FEET TO A POINT IN THE CENTERLINE OF POOLE'S CREEK ROAD No. 2;
THENCE, WITH THE CENTERLINE OF SAID ROAD, THE FOLLOWING COURSES AND DISTANCES:

NORTH 75 DEGREES 28 MINUTES 08 SECONDS EAST, 171.44 FEET;
NORTH 79 DEGREES 10 MINUTES 08 SECONDS EAST, 134.09 FEET;
NORTH 87 DEGREES 46 MINUTES 08 SECONDS EAST, 85.04 FEET;
SOUTH 83 DEGREES 40 MINUTES 52 SECONDS EAST, 100.00 FEET;
SOUTH 66 DEGREES 07 MINUTES 52 SECONDS EAST, 124.80 FEET;
SOUTH 81 DEGREES 13 MINUTES 52 SECONDS EAST, 78.65 FEET;
SOUTH 74 DEGREES 51 MINUTES 52 SECONDS EAST, 71.34 FEET;
SOUTH 63 DEGREES 23 MINUTES 52 SECONDS EAST, 69.72 FEET;
SOUTH 54 DEGREES 59 MINUTES 52 SECONDS EAST, 135.46 FEET;
SOUTH 68 DEGREES 51 MINUTES 52 SECONDS EAST, 179.96 FEET;
SOUTH 58 DEGREES 28 MINUTES 52 SECONDS EAST, 65.08 FEET;
SOUTH 40 DEGREES 39 MINUTES 52 SECONDS EAST, 49.75 FEET;
SOUTH 23 DEGREES 45 MINUTES 52 SECONDS EAST, 44.96 FEET;
THENCE NORTH 70 DEGREES 06 MINUTES 12 SECONDS WEST, 72.52 FEET;
THENCE SOUTH 24 DEGREES 27 MINUTES 26 SECONDS WEST, 146.91 FEET;
THENCE SOUTH 23 DEGREES 17 MINUTES 13 SECONDS WEST, 330.00 FEET;
THENCE NORTH 76 DEGREES 14 MINUTES 34 SECONDS WEST, 692.72 FEET TO THE POINT OF BEGINNING.

CONTAINING 13.293 ACRES.

THE ABOVE DESCRIBED PARCEL BEING THE SAME PARCEL DESCRIBED IN DEED BOOK 142, PAGE 24 OF THE CAMPBELL COUNTY RECORDS.

TOTAL AREA TO BE ZONED: 504.182 ACRES.

PREPARED BY BUFORD L. PAYNE, REGISTERED LAND SURVEYOR No. 1691.

SEPTEMBER 8, 1989

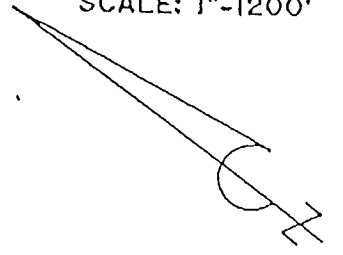
#2192

Properties Annexed Ord. 90-557 3/90

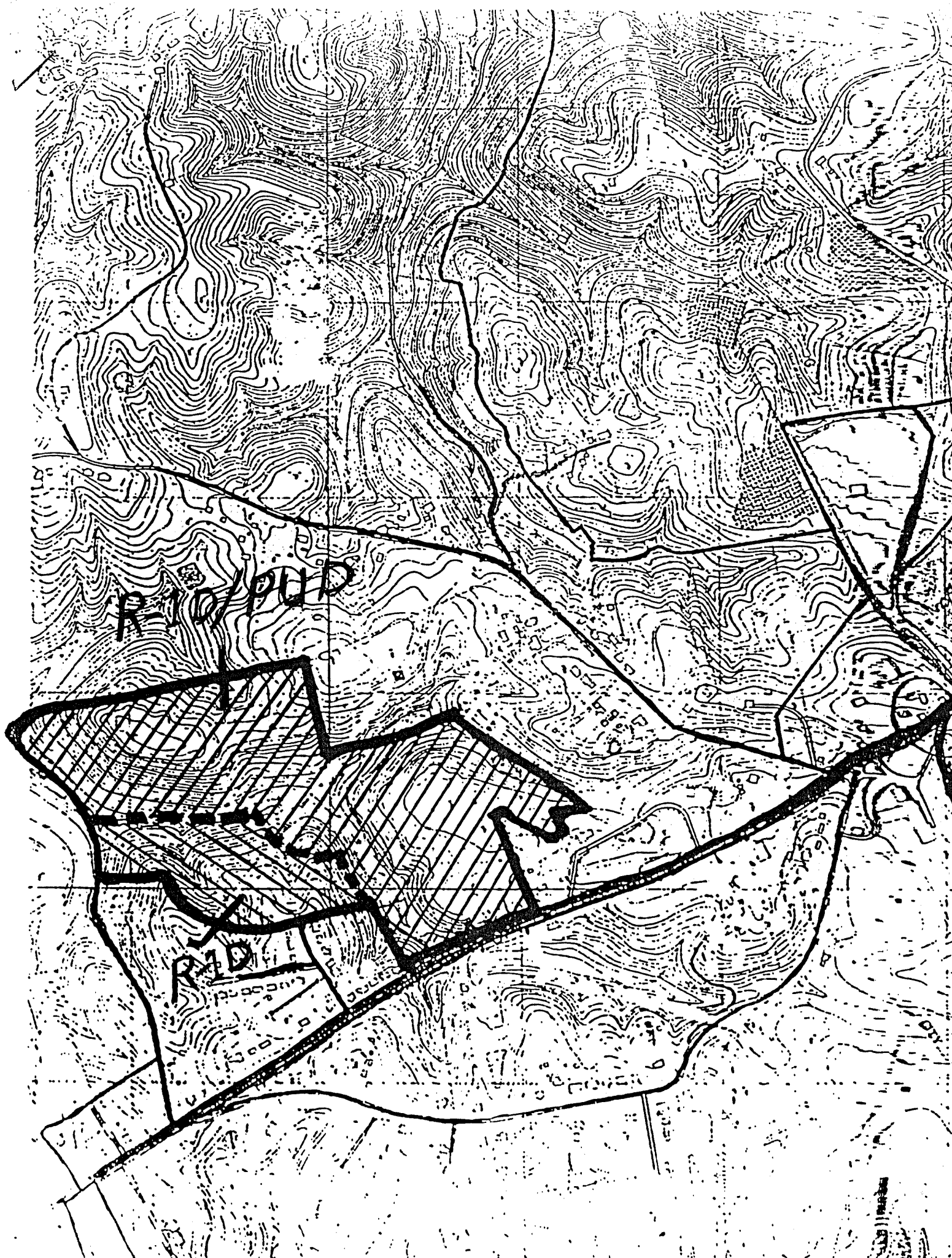
	<u>OUT OF TOWN OWNERS OF PROPERTY ANNEXED</u>
Jack & Peggy Riley 1523 Licking Pike Cold Spring, KY 41076 (No Residence)	Boden & Sons, Inc. Rt. 2, Box 295 Butler, KY 41006
Delmar Combs 1511 Licking Pike Cold Spring, KY 41076 (No Residence)	Charity Tabernacle Church of Newport 1058 Grand Ave. Newport, KY 41071
Curtis Alford 1515 Licking Pike Cold Spring, KY 41076 (No Residence)	Kendrick & O'dell Landscaping, Inc. 3729 Cliffwood Ct. Alexandria, KY 41001
Mitchell & Minnie Griffith 1537 Licking Pike Cold Spring, KY 41076 (No Residence)	Southgate Federal Savings & Loan 2216 Dixie Highway Ft. Mitchell, KY 41017
Paul & Margaret Popovich (No Residence) Licking Pike Property	Taft Television & Radio Co., Inc. 1718 Young St. Cincinnati, Ohio 45210
F. Keith Morgan 200 Pooles Creek #1 Cold Spring, KY 41076 (Residence)	
John A. Geiman 201-a Pooles Creek #1 Cold Spring, KY 41076 (Residence)	
Joseph & Kay Cox 1503 Licking Pike Cold Spring, KY 41076 (Residence)	
Donald & Donna Baker 240 Pooles Creek #2 Cold Spring, KY 41076 (Residence)	
Frederick & Martha Williams 232 Pooles Creek #2 Cold Spring, KY 41076 (Residence)	

U.S. 27

SCALE: 1"=1200'



AREA INDICATED TO BE ZONED
COLD SPRING KENTUCKY



R10/PUD

R1D

10000