

City of Columbia

Municipal Building
116 Campbellsville Street

Phone 270-384-2501
Columbia, KY 42728

February 1, 2007

Secretary of State
700 Capital Avenue
ATTN: Land Office
Frankfort, KY 40601

RECEIVED AND FILED
DATE February 5, 2007

TREY GRAYSON
SECRETARY OF STATE
COMMONWEALTH OF KENTUCKY
BY Harlie Chabron

Gentlemen:

On behalf of the City Council of the City of Columbia and pursuant to KRS 81A.470, please find enclosed a map that delineates the boundaries of the area annexed by the City of Columbia by Ordinance No. 110.27 adopted January 30, 2007 and published February 1, 2007. A copy of Ordinance No. 110.27 is included to show the metes and bounds of the area annexed and my letter certifying to its correctness.

Sincerely,



Carolyn Edwards
City Clerk/Treasurer

Enclosures

City of Columbia


Municipal Building
116 Campbellsville Street

Phone 270-384-2501
Columbia, KY 42728

February 1, 2007

CERTIFICATE OF CITY CLERK

I, Carolyn Edwards, hereby certify that I am duly qualified and acting City Clerk of the City of Columbia, Kentucky, and further certify the attached is a true and correct copy of Ordinance No. 110.27 An Ordinance To Extend and Enlarge The Corporate Lands of the City of Columbia, Kentucky, adopted by the Columbia City Council January 30, 2007.



Carolyn Edwards
City Clerk/Treasurer

(Seal of Office)

RECEIVED AND FILED
DATE February 3, 2007

TREY GRAYSON
SECRETARY OF STATE
COMMONWEALTH OF KENTUCKY
BY Kandice Adkinson

ORDINANCE NO. 110.27
AN ORDINANCE TO EXTEND AND ENLARGE
THE CORPORATE LANDS OF THE CITY OF
COLUMBIA, KENTUCKY

WHEREAS, pursuant to KRS 81A.412, et seq., Ben Arnold, Tommy Grider, James Holladay, Steve & Lee Ann Willis, Danny & Sandy Pyles, Don Franklin, Newcomb Oil Company and Holladay Place, LLC have requested that the City of Columbia, Kentucky annex their land that is contiguous to the City located south of the town square and on the east side of Highway 61 South.

WHEREAS, the annexation of said property would appear to be for the benefit of the City of Columbia;

WHEREAS, pursuant to KRS 100.209, et seq., the Columbia Planning and Zoning Commission has followed the statutory procedure and has recommended that the properties of Ben Arnold, Tommy Grider, James Holladay and Steve and Lee Ann Willis be classified as Zone R-1 Low Density Residential and that the properties of Danny and Sandy Pyles, Don Franklin, Newcomb Oil Company and Holladay Place, LLC be classified as Zone C-2 Highway Oriented Commercial when the property is annexed into the City of Columbia, instead of as Zone R-1 Low Density Residential, which would be its classification otherwise, and the City Council has taken final action with regards to the recommendation of the Columbia Planning and Zoning Commission by enacting Ordinance No. 920.77 pursuant to which the subject properties as stated will be classified as Zone R-1 Low Density Residential and C-2 Highway Oriented Commercial when it is annexed into the City of Columbia; and

WHEREAS, the statutory requirements having been met, it is the intention of the City of Columbia to enact this ordinance for the purposes of annexing into the city limits the property more particularly set forth in this ordinance.

BE IT ORDAINED BY THE CITY OF COLUMBIA, KENTUCKY:

Section (1): That the City of Columbia, Kentucky, does hereby extend the corporate limits of the City of Columbia, Kentucky, as now established, so as to embrace that portion of the hereinafter described territory which is not already included within the city limits of the City of Columbia, said land being 185.19 acres on east side of Highway 61 South and more particularly described as follows:

Beginning at a point at the intersection of the west bank of Pettit's Fork Creek and the south right-of-way of Highway #61 (old) and centerline of Pettit's Fork Bridge and S 16°04'44" E 60.00' from a set 1½" x 18" Re-bar pin with cap #3318 as pointer, witness by a power pole; thence S 55°42'11" E 354.76' to a point on the west bank of Pettit's Fork Creek and S 45°10'26" W 37.79' from a set 1½" x 18" Re-bar pin with cap #3318 as pointer; thence S 34°35'05" E 711.03' to point on west bank of Pettit's Fork Creek and S 28°44'12" W 30.00' from a 18" Walnut with /// new hacks marks, as pointer to a witness 1½" x 18" Re-bar pin with cap #3318; thence S 65°03'30" E 453.28' to a point on west bank of Pettit's Fork Creek; thence S 62°13'19" W 90.00' to a set 1½" x 18" Re-bar pin

with cap #3318, witness by a steel brace post (in parkway fence); thence S 62°13'19" W 2,704.12' to a set 1\2" x 18" Re-bar pin with cap #3318, witness by a steel brace post (in parkway fence); thence S 60°04'27" W 601.77' to a set 1\2" x 18" Re-bar pin with cap #3318, witness by a steel brace post (in parkway fence); thence S 66°24'47" W 636.81' to a found 1\2" x 18" Re-bar pin with cap #3318, witness wooden post; thence S 62°13'52" W 4.46' to a found 1\2" x 18" Re-bar pin with cap #3318, witness by a steel brace post (in parkway fence); thence S 61°22'54" W 226.69' to a found 1\2" x 18" Re-bar pin with cap #3318, witness by a steel brace post (in parkway fence); thence S 61°19'49" W 120.52' to a found 1\2" x 18" Re-bar pin with cap #3318, witness by a steel brace post (in parkway fence); thence S 60°59'53" W 311.22' to a found 1\2" x 18" Re-bar pin with cap #3318, witness by a steel brace post (in parkway fence); thence S 61°28'15" W 326.76' to a found 1\2" x 18" Re-bar pin with cap #3318, witness by a steel brace post (in parkway fence); thence S 61°14'39" W 364.12' to a set 1\2" x 18" Re-bar pin with cap #3318, witness by a steel brace post (in parkway fence); thence S 72°09'04" W 1,362.04' to a found 5\8" Re-bar pin without cap; thence S 85°51'33" W 146.61' to a found 5\8" Re-bar pin without cap; thence N 81°31'14" W 331.27' to a found 5\8" Re-bar pin without cap; thence S 69°17'23" W 169.52' to a found 5\8" Re-bar pin without cap; thence N 77°55'54" W 201.64' to a found 5\8" Re-bar pin without cap on the east right-of-way of Highway #61 (New); thence with east right-of-way of Highway #61 (new) N 17°34'04" E 638.54' to a found 5\8" Re-bar pin without cap; thence N 27°44'41" E 485.83' to a found 5\8" Re-bar pin without cap; thence N 39°36'54" E 194.79' to a found 5\8" Re-bar pin without cap; thence N 44°12'10" E 681.67' to a found 5\8" Re-bar pin without cap; thence N 61°31'51" E 196.88' to a found 5\8" Re-bar pin without cap; thence N 53°26'00" E 396.03' to a found 5\8" Re-bar pin without cap; thence N 62°30'26" E 251.25' to a found 5\8" Re-bar pin without cap; thence N 57°30'02" E 406.15' to a found 5\8" Re-bar pin without cap at the intersection of the east right-of-way of Highway #61 (new) and the south right-of-way of Highway #61 (old); thence leaving east right-of-way of Highway #61 (new) and with the south right-of-way of Highway #61 (old) S 84°03'07" E 47.51' to a found 5\8" Re-bar pin without cap; thence S 81°40'12" E 209.56' to a found 5\8" Re-bar pin without cap; thence S 40°12'17" E 40.42' to a found 5\8" Re-bar pin without cap; thence S 74°18'13" E 65.66' to a found 5\8" Re-bar pin without cap; thence S 81°37'56" E 122.37' to a found 1\2" x 18" Re-bar pin with cap #3318; thence N 14°10'38" E 36.06' to a found 1\2" x 18" Re-bar pin with cap #3318; thence S 82°20'17" E 50.00' to a found 1\2" x 18" Re-bar pin with cap #3318; thence S 82°43'38" E 298.84' to a point on the south right-of-way of Highway #61 (old); thence N 83°27'42" E 383.96' to a set 1\2" x 18" Re-bar pin with cap #3318, witness by a power pole; thence N 75°50'03" E 805.40' to a found 1\2" x 18" Re-bar pin with cap #3318, witness by a wooden post; thence N 83°55'59" E 20.84' to a point on the south right-of-way of Highway #61 (old); thence continuing with south right-of-way of Highway #61 (old) S 89°20'41" E 44.21' to a point; thence S 78°25'13" E 31.42' to a point; thence S 69°52'13" E 21.07' to a point; thence S 63°58'34" E 19.08' to a point; thence S 52°53'51" E 98.42' to a point; thence S 59°54'22" E 114.78' to a point; thence S 75°49'13" E 47.30' to a point; thence S 83°31'34" E 20.92' to a point; thence N 88°39'05" E 52.72' to a point; thence N 76°12'26" E 57.65' to a point; thence N 64°01'07" E 78.38' to a set 1\2" x 18" Re-bar pin with cap #3318, witness by a power pole; thence N 56°05'17" E 267.35' to a point; thence N 55°57'05" E 253.67' to a point; thence N 51°17'26" E 224.14' to a found 1\2" x 18" Re-bar pin with cap #3318; thence N 38°28'37" E 149.38' to a point; thence N 39°26'25" E 251.94' to a point; thence N 38°14'46" E 87.31' to a point; thence N 34°23'00" E 107.04' to a point and S 10°04'13" W 30.29' from a set 1\2" x 18" Re-bar pin with cap #3318 as pointer ; thence N

25°44'40" E 90.14' to a point; thence N 18°26'32" E 66.88' to a point; thence N 16°04'44" E 486.62' to the point of beginning, and containing 185.19 Acres.

Plat to be recorded in Plat Cabinet 1 Slide 173, and above description to be recorded in Miscellaneous Book 61 Page 257 in the Adair County Clerks Office.

This survey is subject to any and all easements, restrictions, and right-of-ways of record at this time. All bearings are based on the Magnetic North which was observed in the field N 58°13'15" E 7,408.30 feet from the Point of Beginning with reference bearing NW 48° along a random base line on 09/19/06.

Section (2): That the aforescribed property which is annexed into the city limits of the City of Columbia is hereby zoned as R-1 Low Density Residential (Properties of: Ben Arnold, Tommy Grider, James Holladay and Steve and LeeAnn Willis) and zoned as C-2 Highway Oriented Commercial (Properties of: Danny and Sandy Pyles, Don Franklin, Newcomb Oil Company and Holladay Place, LLC) and the Zoning Map for the City of Columbia is amended to that effect.

Section (3): That all city ordinances, orders, resolutions, motions or parts thereof insofar as same may be in conflict herewith are repealed and this ordinance shall take effect from and after its passage, approval and publication as provided by law.

FIRST READING: January 23, 2007

SECOND READING: January 30, 2007

PUBLICATION: February 1, 2007



PATRICK R. BELL
MAYOR

ATTEST:



CAROLYN EDWARDS
CITY CLERK/TREASURER

McKinney Land Surveying

103 South Reed Street Columbia, KY 42728

Michael E. McKinney P.L.S. #3318
County Surveyor (Adair County-Columbia)

Phone (270) 384-5293

October 11, 2006

DESCRIPTION OF A TRACT OF LAND, BY A BOUNDARY SURVEY FOR THE CITY OF COLUMBIA (HIGHWAY #61 SOUTH ANNEXATION), APPROXIMATELY 2.10 MILES FROM THE ADAIR COUNTY COURTHOUSE, ON THE SOUTH RIGHT-OF-WAY OF HIGHWAY #61 AND THE NORTH RIGHT-OF-WAY OF THE LOUIE B. NUNN PARKWAY IN ADAIR COUNTY, COMMONWEALTH OF KENTUCKY AND MORE PARTICULARLY DESCRIBED AS FOLLOWS:

Beginning at a point at the intersection of the west bank of Pettit's Fork Creek and the south right-of-way of Highway #61 (old) and centerline of Pettit's Fork Bridge and S 16°04'44" E 60.00' from a set 1½" x 18" Re-bar pin with cap #3318 as pointer, witness by a power pole; thence S 55°42'11" E 354.76' to a point on the west bank of Pettit's Fork Creek and S 45°10'26" W 37.79' from a set 1½" x 18" Re-bar pin with cap #3318 as pointer; thence S 34°35'05" E 711.03' to point on west bank of Pettit's Fork Creek and S 28°44'12" W 30.00' from a 18" Walnut with /// new hacks marks, as pointer to a witness 1½" x 18" Re-bar pin with cap #3318; thence S 65°03'30" E 453.28' to a point on west bank of Pettit's Fork Creek; thence S 62°13'19" W 90.00' to a set 1½" x 18" Re-bar pin with cap #3318, witness by a steel brace post (in parkway fence); thence S 62°13'19" W 2,704.12' to a set 1½" x 18" Re-bar pin with cap #3318, witness by a steel brace post (in parkway fence); thence S 60°04'27" W 601.77' to a set 1½" x 18" Re-bar pin with cap #3318, witness by a steel brace post (in parkway fence); thence S 66°24'47" W 636.81' to a found 1½" x 18" Re-bar pin with cap #3318, witness wooden post; thence S 62°13'52" W 4.46' to a found 1½" x 18" Re-bar pin with cap #3318, witness by a steel brace post (in parkway fence); thence S 61°22'54" W 226.69' to a found 1½" x 18" Re-bar pin with cap #3318, witness by a steel brace post (in parkway fence); thence S 61°19'49" W 120.52' to a found 1½" x 18" Re-bar pin with cap #3318, witness by a steel brace post (in parkway fence); thence S 60°59'53" W 311.22' to a found 1½" x 18" Re-bar pin with cap #3318, witness by a steel brace post (in parkway fence); thence S 61°28'15" W 326.76' to a found 1½" x 18" Re-bar pin with cap #3318, witness by a steel brace post (in parkway fence); thence S 61°14'39" W 364.12' to a to a set 1½" x 18" Re-bar pin with cap #3318, witness by a steel brace post (in parkway fence); thence S 72°09'04" W 1,362.04' to a found 5/8" Re-bar pin without cap; thence S 85°51'33" W 146.61' to a found 5/8" Re-bar pin without cap; thence N 81°31'14" W 331.27' to a found 5/8" Re-bar pin without cap; thence S 69°17'23" W 169.52' to a found 5/8" Re-bar pin without cap; thence N 77°55'54" W 201.64' to a found 5/8" Re-bar pin without cap on the east right-of-way of Highway #61 (New); thence with east right-of-way of Highway #61 (new) N 17°34'04" E 638.54' to a found 5/8" Re-bar pin without cap; thence N 27°44'41" E 485.83' to a found 5/8" Re-bar pin without cap; thence N 39°36'54" E 194.79' to a found 5/8" Re-bar pin without cap; thence N 44°12'10" E 681.67' to a found 5/8" Re-bar pin without cap; thence N 61°31'51" E 196.88' to a found 5/8" Re-bar pin without cap; thence N 53°26'00" E 396.03' to a found 5/8" Re-bar pin without cap; thence N 62°30'26" E 251.25' to a found 5/8" Re-bar pin without cap; thence N 57°30'02" E 406.15' to a found 5/8" Re-bar pin without cap at the intersection of the east right-of-way of Highway #61 (new) and the south right-of-way of Highway #61 (old); thence leaving east right-of-way of Highway #61 (new) and with the south right-

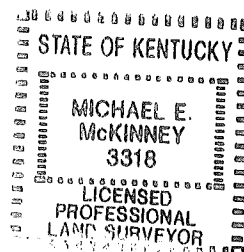
of-way of Highway #61 (old) S 84°03'07" E 47.51' to a found 5/8" Re-bar pin without cap; thence S 81°40'12" E 209.56' to a found 5/8" Re-bar pin without cap; thence S 40°12'17" E 40.42' to a found 5/8" Re-bar pin without cap; thence S 74°18'13" E 65.66' to a found 5/8" Re-bar pin without cap; thence S 81°37'56" E 122.37' to a found 1/2" x 18" Re-bar pin with cap #3318; thence N 14°10'38" E 36.06' to a found 1/2" x 18" Re-bar pin with cap #3318; thence S 82°20'17" E 50.00' to a found 1/2" x 18" Re-bar pin with cap #3318; thence S 82°43'38" E 298.84' to a point on the south right-of-way of Highway #61 (old); thence N 83°27'42" E 383.96' to a set 1/2" x 18" Re-bar pin with cap #3318, witness by a power pole; thence N 75°50'03" E 805.40' to a found 1/2" x 18" Re-bar pin with cap #3318, witness by a wooden post; thence N 83°55'59" E 20.84' to a point on the south right-of-way of Highway #61 (old); thence continuing with south right-of-way of Highway #61 (old) S 89°20'41" E 44.21' to a point; thence S 78°25'13" E 31.42' to a point; thence S 69°52'13" E 21.07' to a point; thence S 63°58'34" E 19.08' to a point; thence S 52°53'51" E 98.42' to a point; thence S 59°54'22" E 114.78' to a point; thence S 75°49'13" E 47.30' to a point; thence S 83°31'34" E 20.92' to a point; thence N 88°39'05" E 52.72' to a point; thence N 76°12'26" E 57.65' to a point; thence N 64°01'07" E 78.38' to a set 1/2" x 18" Re-bar pin with cap #3318, witness by a power pole; thence N 56°05'17" E 267.35' to a point; thence N 55°57'05" E 253.67' to a point; thence N 51°17'26" E 224.14' to a found 1/2" x 18" Re-bar pin with cap #3318; thence N 38°28'37" E 149.38' to a point; thence N 39°26'25" E 251.94' to a point; thence N 38°14'46" E 87.31' to a point; thence N 34°23'00" E 107.04' to a point and S 10°04'13" W 30.29' from a set 1/2" x 18" Re-bar pin with cap #3318 as pointer ; thence N 25°44'40" E 90.14' to a point; thence N 18°26'32" E 66.88' to a point; thence N 16°04'44" E 486.62' to the point of beginning, and containing 185.19 Acres.

Plat to be recorded in Plat Cabinet ___ Slide ___, and above description to be recorded in Miscellaneous Book ___ Page ___ in the Adair County Clerks Office.

This survey is subject to any and all easements, restrictions, and right-of-ways of record at this time. All bearings are based on the Magnetic North which was observed in the field N 58°13'15" E 7,408.30 feet from the Point of Beginning with reference bearing NW 48° along a random base line on 09/19/06.

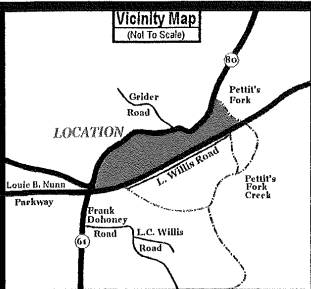
I hereby certify that this survey was done under my direct supervision by the method of Random Traverse with side shots, and the unadjusted precision ratio of the traverse was 1/54,792.00'. This survey is a Class "A" Survey and meets the Minimum Standards required by the State of Kentucky as defined by KRS 322.

Michael E. McKinney 01/05/07
MICHAEL E. MCKINNEY P.L.S. #3318
 COUNTY SURVEYOR (ADAIR COUNTY-COLUMBIA)



City of Columbia Highway #61 South Annexation

(Not to Scale)

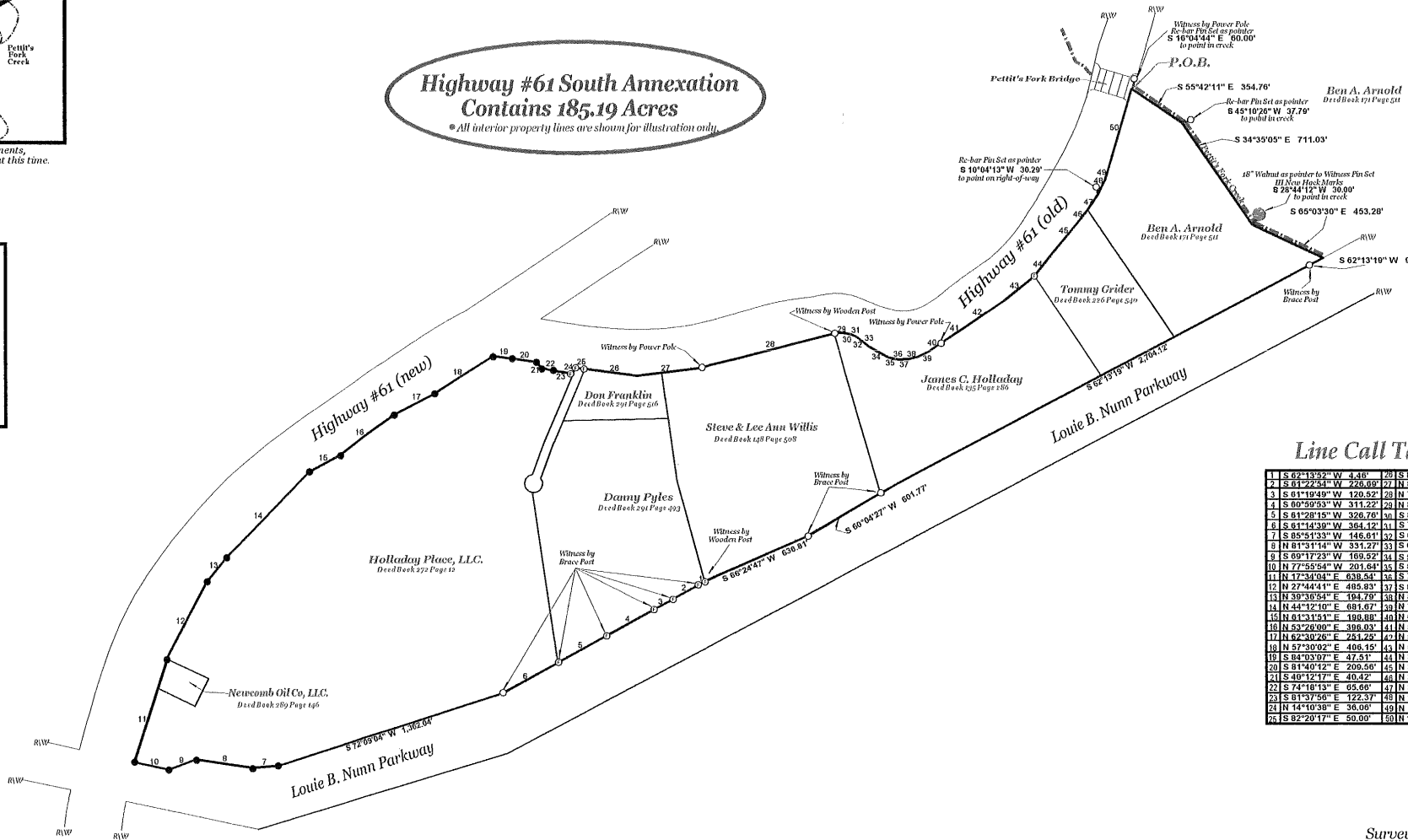


This survey is subject to any and all easements, restrictions, and right-of-ways of record at this time.

Highway #61 South Annexation Contains 185.19 Acres
 *All interior property lines are shown for illustration only.

Legend

- P.O.B. Point of Beginning
- P/L Property Line
- R/W Right of Way
- 1/2" x 18" Rebar Pin Set with Cap #3318
- 5/8" Rebar Pin Found without cap
- ⊙ 1/2" x 18" Rebar Pin Found with Cap #3318

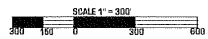


Line Call Table

1	S 62°13'52" W 4.46'	28	S 8
2	S 81°22'54" W 226.08'	27	N 8
3	S 61°19'49" W 120.52'	26	N 7
4	S 00°59'53" W 311.22'	25	N 6
5	S 81°28'15" W 326.76'	24	N 5
6	S 81°14'39" W 364.12'	23	N 4
7	S 05°51'33" W 146.61'	22	S 6
8	N 81°31'14" W 331.27'	21	S 5
9	S 69°17'23" W 169.52'	20	S 4
10	N 77°55'54" W 201.61'	19	S 3
11	N 72°39'54" W 630.54'	18	S 2
12	N 27°44'41" E 485.83'	17	S 1
13	N 39°36'54" E 194.78'	16	N 8
14	N 44°12'10" E 681.67'	15	N 7
15	N 81°31'51" E 196.80'	14	N 6
16	N 52°20'00" E 388.03'	13	N 5
17	N 62°30'26" E 251.28'	12	N 4
18	N 57°30'02" E 406.15'	11	N 3
19	S 84°03'07" E 47.51'	10	N 2
20	S 81°40'12" E 209.56'	9	N 1
21	S 40°12'17" E 40.42'	8	N 0
22	S 74°18'13" E 65.66'	7	N 3
23	S 81°37'56" E 122.31'	6	N 2
24	N 14°10'38" E 36.06'	5	N 1
25	S 82°20'17" E 50.00'	4	N 0

Magnetic North was observed in the field N 58° 13' 15" E 7,408.30 feet from the point of beginning with reference bearing NW 48° along a random base line on 10/04/06.

Drawn by: Steve Cox
 Instrument Man: Michael E. McKinney
 Rod Man: Steve Cox
 File No: ANNEX06
 Checked by: ME01



Surveyor Certification

I hereby certify that the survey depicted by this plat was done under my direct supervision by the method of Random Traverse with side shots, and the unadjusted precision ratio of the traverse was 1/54,792'. This survey is a Class "A" survey and meets the Minimum Standards required by the State of Kentucky as defined by KRS 322.

Michael E. McKinney
 Michael E. McKinney PLS #3318
 County Surveyor (Adair County-Columbia)

STATE OF KENTUCKY
 MICHAEL E. MCKINNEY
 3318
 LICENSED PROFESSIONAL LAND SURVEYOR

Survey
City of Columbia
 116 Campbell
 Columbia,
 Project
 "Highway #61 S
 Adair C
 Commonwealth
 10/06
MCKINNEY LAND
 100 South Reed Street Colum