

RESOLUTION 27 -2008

A RESOLUTION ADOPTING A MODERN AND ACCURATE LEGAL DESCRIPTION OF TERRITORY PREVIOUSLY ANNEXED BY ORDINANCE

WHEREAS, the City of Corbin has enacted numerous ordinances annexing property into the corporate limits of the City of Corbin; and

WHEREAS, each individual annexation contains a prior survey prepared by now unknown individual, and further references documentation that is no longer in existence; and

WHEREAS, the City wishes to provide a modern, accurate, easily identifiable legal description reflecting bearings and coordinates based upon the state plane coordinate system, including relevant GPS and GIS data, same having been certified by a professional land surveyor for each prior annexation; and

WHEREAS, the City wishes to comply with the requirements of Amended KRS 81A.4 70 effective July 13, 2004; and

WHEREAS, the City does not intend to amend or replace its prior ordinance annexing, but rather to interpret the defined boundaries of the territory previously annexed and adopt a modern and accurate legal description of territory previously annexed.

NOW THEREFORE, BE IT RESOLVED BY THE COMMISSION OF THE CITY OF CORBIN, KENTUCKY:

SECTION 1. That the City Commission of the City Of Corbin hereby adopts the following legal descriptions, and plats attached hereto as prepared by James D. Blanton, Licensed Professional Land Surveyor No. 3409 by new survey as an accurate depiction of the property previously annexed into the corporate city limits of the City Of Corbin by Ordinance 13-87 dated July 20, 1987 a copy attached hereto as Exhibit "2", and hereby adopts said new legal description and plat as the official legal description and plat to be adopted by the City for all purposes when referencing this prior annexation.

SECTION 2. This new legal description as prepared by James D. Blanton a Licensed Professional Land Surveyor No. 3409 is as follows:

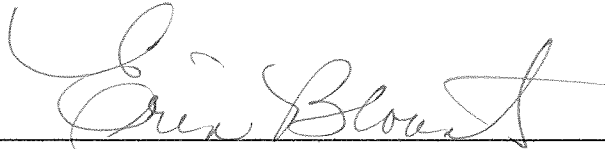
RECEIVED AND FILED
DATE Oct. 15, 2008

TREY GRAYSON
SECRETARY OF STATE
COMMONWEALTH OF KENTUCKY
BY Hardie Adkins

CERTIFICATION

I, ERIN BLOUNT, Clerk of the City of Corbin, Kentucky do hereby certify that, the above Resolution 27 - 2008 is a true and correct copy as was presented to the City Council of the City Of Corbin, Kentucky at their regular schedule meeting dated October 13, 2008.

Given under my hand this 13th day of October, 2008.



City Clerk

(SEAL)

Office Address:
2121 S. Main Street
Corbin, Ky. 40701
Phone: (606) 523-5164
Phone: (606) 864-8460
Fax: (606) 523-8212

Blanton Land Surveying

ANNEXATION DESCRIPTION (ORDINANCE NUMBER 13-87)

THE BEARINGS AND DISTANCES SHOWN HEREON HAVE BEEN ROTATED FROM THE ORIGINAL SUBMITTAL TO GET THE PARCEL ON STATE PLANE COORDINATES NAD 1983, AND ANY ERROR IN CLOSURE HAS BEEN FORCE CLOSED. ANY OVERLAPS IN PREVIOUS ANNEXATIONS WILL ALSO BE ADJUSTED TO MAKE EACH PARCEL MATCH TO ANY ADJACENT CITY BOUNDARIES OR NEWLY SUBMITTED ANNEXATIONS. THE ONLY FIELD SURVEYING PERFORMED ON THIS PROJECT WAS GPS CONTROL POINTS WERE SET AND GROUND SURVEYING TO EACH PARCEL AND THE LOCATION OF AT LEAST 2 OF THE CORNERS CALLED FOR IN THE SURVEY INFORMATION (OR ADJACENT ANNEXATIONS) NOTED IN THE SURVEYORS CERTIFICATION AND THEN A ROTATION APPLIED.

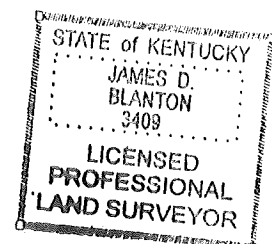
A CERTAIN TRACT OR PARCEL OF LAND IN CORBIN, KNOX COUNTY, KY. BEGINNING AT A POST THENCE N60°60'18'36"E 48.29 FEET TO A POINT IN THE SE R-O-W OF US. HWY 25E, THENCE WITH SAID R-O-W: S55°07'43"E 358.13 FEET TO A POINT IN THE EXISTING CITY LIMITS, THENCE LEAVING SAID R-O-W AND WITH SAID EXISTING CITY LIMITS: S41°28'36"W 247.89 FEET TO A POINT IN THE NORTH R-O-W OF KY. HWY. 1629, THENCE LEAVING SAID CITY LIMITS AND WITH SAID R-O-W: N82°54'33"W 257.29 FEET TO A POINT, THENCE LEAVING SAID R-O-W: N12°13'26"E 215.55 FEET TO A FOUND METAL PIPE, N16°45'00"E 26.47 FEET TO A POST, N17°08'08"E 103.37 FEET TO THE BEGINNING AND CONTAINING 2.27 ACRES BY CALCULATION.

THE BOUNDARY OF ANNEXATION ORDINANCE 13-87 FOR THE CITY OF CORBIN, KY. DESCRIBED HEREON IS BASED UPON THE FOLLOWING INFORMATION. THE DESCRIPTION TAKEN FROM THE PREVIOUSLY SUBMITTED ORDINANCE 13-87, AND FIELD LOCATION THEN ROTATED TO STATE PLANE AND FORCE CLOSED, AND ANY OVERLAPS IN PREVIOUS OR ADJOINING ORDINANCES WILL ADJUSTED TO MAKE EACH PARCEL MATCH TO ANY ADJACENT CITY LIMIT BOUNDARIES OR NEWLY SUBMITTED ANNEXATION ORDINANCES.

THE PURPOSE OF THE BOUNDARY DESCRIBED HEREON IS TO DELINIATE THE LIMITS OF THE AFORESAID ANNEXATION. IT DOES NOT IN ANY WAY REFLECT A DETERMINATION OF THE INDIVIDUAL PARCEL BOUNDARIES AND SHOULD NOT BE USED FOR THAT PURPOSE.

James D. Blanton PLS # 3409

10/08/08



JBK

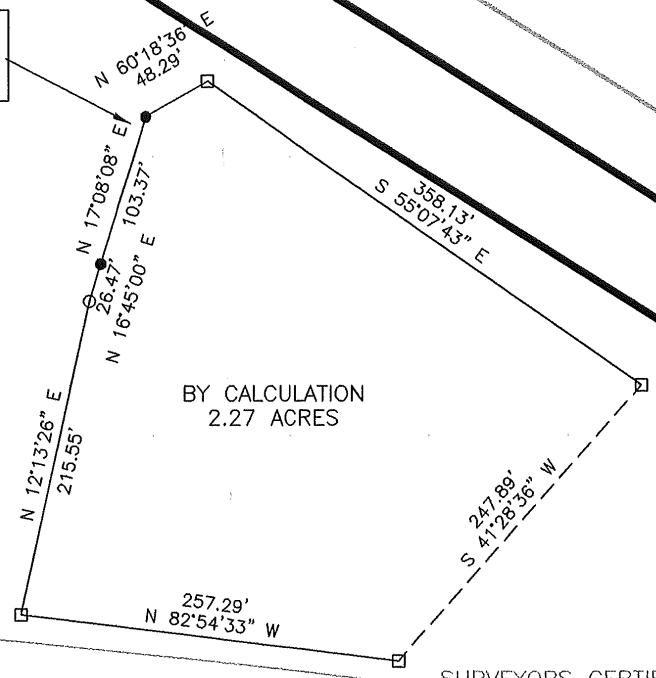
PARK HILLS ROAD

P.O.B.

N:1873970.611
E:2128427.679

THE BEARINGS AND DISTANCES SHOWN HEREON HAVE BEEN ROTATED FROM THE ORIGINAL SUBMITTAL TO GET THE PARCEL ON STATE PLANE COORDINATES, AND ANY ERROR IN CLOSURE HAS BEEN FORCE CLOSED. ANY OVERLAPS IN PREVIOUS ANNEXATIONS WILL ALSO BE ADJUSTED TO MAKE EACH PARCEL MATCH TO ANY ADJACENT CITY BOUNDARIES OR NEWLY SUBMITTED ANNEXATIONS.

THE ONLY FIELD SURVEYING PERFORMED ON THIS PROJECT WAS GPS CONTROL POINTS WERE SET AND GROUND SURVEYING TO EACH PARCEL AND THE LOCATION OF AT LEAST 2 OF THE CORNERS CALLED FOR IN THE SURVEY INFORMATION OR NEARBY OR ADJOINING ANNEXATIONS AND MAY BE NOTED IN THE SURVEYORS CERTIFICATION AND THEN A ROTATION APPLIED.



BY CALCULATION
2.27 ACRES

1629

- FOUND METAL PIPE
- FENCE POST
- POINT

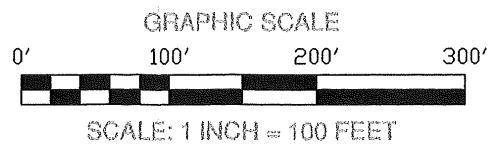
EXISTING CITY LIMITS

SURVEYORS CERTIFICATE

THE BOUNDARY OF ANNEXATION ORDINANCE NUMBER 13-87 FOR THE CITY OF CORBIN SHOWN ON THIS PLAT IS BASED UPON THE FOLLOWING INFORMATION:
THE PREVIOUSLY SUBMITTED ANNEXATION ORDINANCE NO. 13-87 AND FIELD LOCATION, AND THEN ROTATED TO STATE PLANE COORDINATES.

THE PURPOSE OF THE BOUNDARY SHOWN HEREON IS TO DELINEATE THE LIMITS OF THE AFORESAID ANNEXATION. IT DOES NOT IN ANY WAY REFLECT A DETERMINATION OF THE INDIVIDUAL PARCEL BOUNDARIES AND SHOULD NOT BE USED FOR THAT PURPOSE.

APPROVED BY: JDB
DWG. DATE: OCTOBER 06, 2008
DWG. PLT
DRAWN BY: JDB
JOB NO.: CORBIN\CITY
ORD_13-87.DWG



ANNEXATION ORDINANCE NO.
13-87

 JAMES D. BLANTON Professional Land Surveyors	10-7-08 KY. PLS # 3409 DATE
	2121 S. MAIN STREET CORBIN, KY. 40701 Phone (606) 523-5164 Phone (606) 864-8460 Fax (606) 523-8212

CITY