

RESOLUTION 29 -2008

A RESOLUTION ADOPTING A MODERN AND ACCURATE LEGAL DESCRIPTION OF TERRITORY PREVIOUSLY ANNEXED BY ORDINANCE.

WHEREAS, the City of Corbin has enacted numerous ordinances annexing property into the corporate limits of the City of Corbin; and

WHEREAS, each individual annexation contains a prior survey prepared by now unknown individual, and further references documentation that is no longer in existence; and

WHEREAS, the City wishes to provide a modern, accurate, easily identifiable legal description reflecting bearings and coordinates based upon the state plane coordinate system, including relevant GPS and GIS data, same having been certified by a professional land surveyor for each prior annexation; and

WHEREAS, the City wishes to comply with the requirements of Amended KRS 81A.4 70 effective July 13, 2004; and

WHEREAS, the City does not intend to amend or replace its prior ordinance annexing, but rather to interpret the defined boundaries of the territory previously annexed and adopt a modern and accurate legal description of territory previously annexed.

NOW THEREFORE, BE IT RESOLVED BY THE COMMISSION OF THE CITY OF CORBIN, KENTUCKY:

SECTION 1. That the City Commission of the City Of Corbin hereby adopts the following legal descriptions, and plats attached hereto as prepared by James D. Blanton, Licensed Professional Land Surveyor No. 3409 by new survey as an accurate depiction of the property previously annexed into the corporate city limits of the City Of Corbin by Ordinance 9-2003 dated September 08, 2003 a copy attached hereto as Exhibit "2", and hereby adopts said new legal description and plat as the official legal description and plat to be adopted by the City for all purposes when referencing this prior annexation.

SECTION 2. This new legal description as prepared by James D. Blanton a Licensed Professional Land Surveyor No. 3409 is as follows:

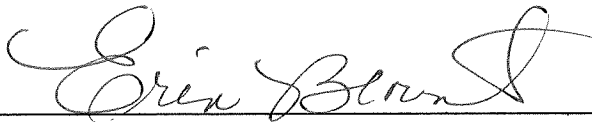
RECEIVED AND FILED
DATE Oct. 31, 2008

TREY GRAYSON
SECRETARY OF STATE
COMMONWEALTH OF KENTUCKY
BY Kandice Adkins

CERTIFICATION

I, ERIN BLOUNT, Clerk of the City of Corbin, Kentucky do hereby certify that, the above Resolution 29 - 2008 is a true and correct copy as was presented to the City Council of the City Of Corbin, Kentucky at their regular schedule meeting dated October 29, 2008.

Given under my hand this 29th day of October, 2008.



City Clerk

(SEAL)

Office Address:
2121 S. Main Street
Corbin, Ky. 40701
Phone: (606) 523-5164
Phone: (606) 864-8460
Fax: (606) 523-8212

Blanton Land Surveying

ANNEXATION DESCRIPTION (ORDINANCE NUMBER 9-2003)

THE BEARINGS AND DISTANCES SHOWN HEREON HAVE BEEN ROTATED FROM THE ORIGINAL SUBMITTAL TO GET THE PARCEL ON STATE PLANE COORDINATES NAD 1983, AND ANY ERROR IN CLOSURE HAS BEEN FORCE CLOSED. ANY OVERLAPS IN PREVIOUS ANNEXATIONS WILL ALSO BE ADJUSTED TO MAKE EACH PARCEL MATCH TO ANY ADJACENT CITY BOUNDARIES OR NEWLY SUBMITTED ANNEXATIONS. THE ONLY FIELD SURVEYING PERFORMED ON THIS PROJECT WAS GPS CONTROL POINTS WERE SET AND GROUND SURVEYING TO EACH PARCEL AND THE LOCATION OF AT LEAST 2 OF THE CORNERS CALLED FOR IN THE SURVEY INFORMATION (OR ADJACENT OR NEARBY ANNEXATIONS) AND MAY BE NOTED IN THE SURVEYORS CERTIFICATION AND THEN A ROTATION APPLIED.

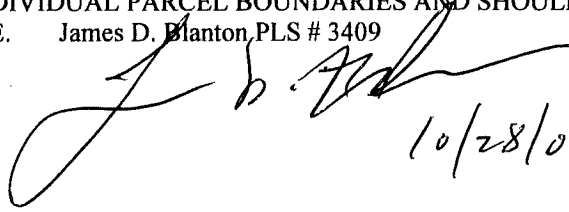
A CERTAIN TRACT OR PARCEL OF LAND IN CORBIN, KY.
BEGINNING AT A FOUND STEEL ROD (N:1858280.740 E: 2115398.750), THENCE S86° 01'18"W 280.64 FEET TO A POINT, S06°27'14"E 177.44 FEET TO A POINT, S81°50'22"W 161.84 FEET TO A POINT, N01°35'44"W 361.85 FEET TO A POINT, N19°13'19"W 89.69 FEET TO A POINT, N19°13'19"W 696.16 FEET TO A POINT IN THE R-O-W OF I-75, THENCE WITH SAME: N07°27'25"E 234.12 FEET TO A POINT, N02°11'24"W 87.95 FEET TO A POINT, THENCE LEAVING SAID R-O-W: N49°56'08"E 304.62 FEET TO A POINT, S63°42'28"E 192.63 FEET TO A POINT, S61°10'04"E 164.35 FEET TO A POINT, S79° 26'40"E 214.09 FEET TO A POINT, S74°09'30"E 498.17 FEET TO A POINT, S00°16'22"W 7.69 FEET TO A POINT, S72°03'33"E 139.53 FEET TO A POINT, S00°30'21"E 992.23 FEET TO A POINT, S72°39'56"W 357.25 FEET TO A POINT, N00°52'16"E 140.94 FEET TO A POINT, S85°08'12"W 216.92 FEET TO A FOUND STEEL ROD, S04°49'50"E 543.07 FEET TO A POINT, S87°42'55"W 111.15 FEET TO A POINT, N03°38'10"W 589.56 FEET TO A FOUND STEEL ROD, N45°03'27"W 89.49 FEET TO THE BEGINNING AND CONTAINING 39.94 ACRES BY CALCULATION.

THE BOUNDARY OF ANNEXATION ORDINANCE 9-2003 FOR THE CITY OF CORBIN, KY. DESCRIBED HEREON IS BASED UPON THE FOLLOWING INFORMATION. THE DESCRIPTION TAKEN FROM THE PREVIOUSLY SUBMITTED ORDINANCE 9-2003 ROTATED TO STATE PLANE AND FORCE CLOSED, AND ANY OVERLAPS IN PREVIOUS OR ADJOINING ORDINANCES WILL ADJUSTED TO MAKE EACH PARCEL MATCH TO ANY ADJACENT CITY LIMIT BOUNDARIES OR NEWLY SUBMITTED ANNEXATION ORDINANCES.

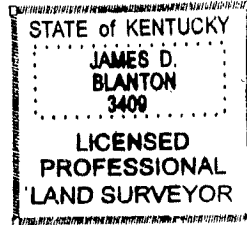
NOTE: THE THREE EXCEPTIONS LISTED IN THE ORIGINAL ANNEXATION ORDINANCE SUBMITTAL ARE NOT INSIDE OF THE BOUNDARY DESCRIBED HEREON (SEE PLAT ATTACHED HERETO)

THE PURPOSE OF THE BOUNDARY DESCRIBED HEREON IS TO DELINIATE THE

LIMITS OF THE AFORESAID ANNEXATION. IT DOES NOT IN ANY WAY REFLECT A DETERMINATION OF THE INDIVIDUAL PARCEL BOUNDARIES AND SHOULD NOT BE USED FOR THAT PURPOSE. James D. Blanton, PLS # 3409



10/28/08

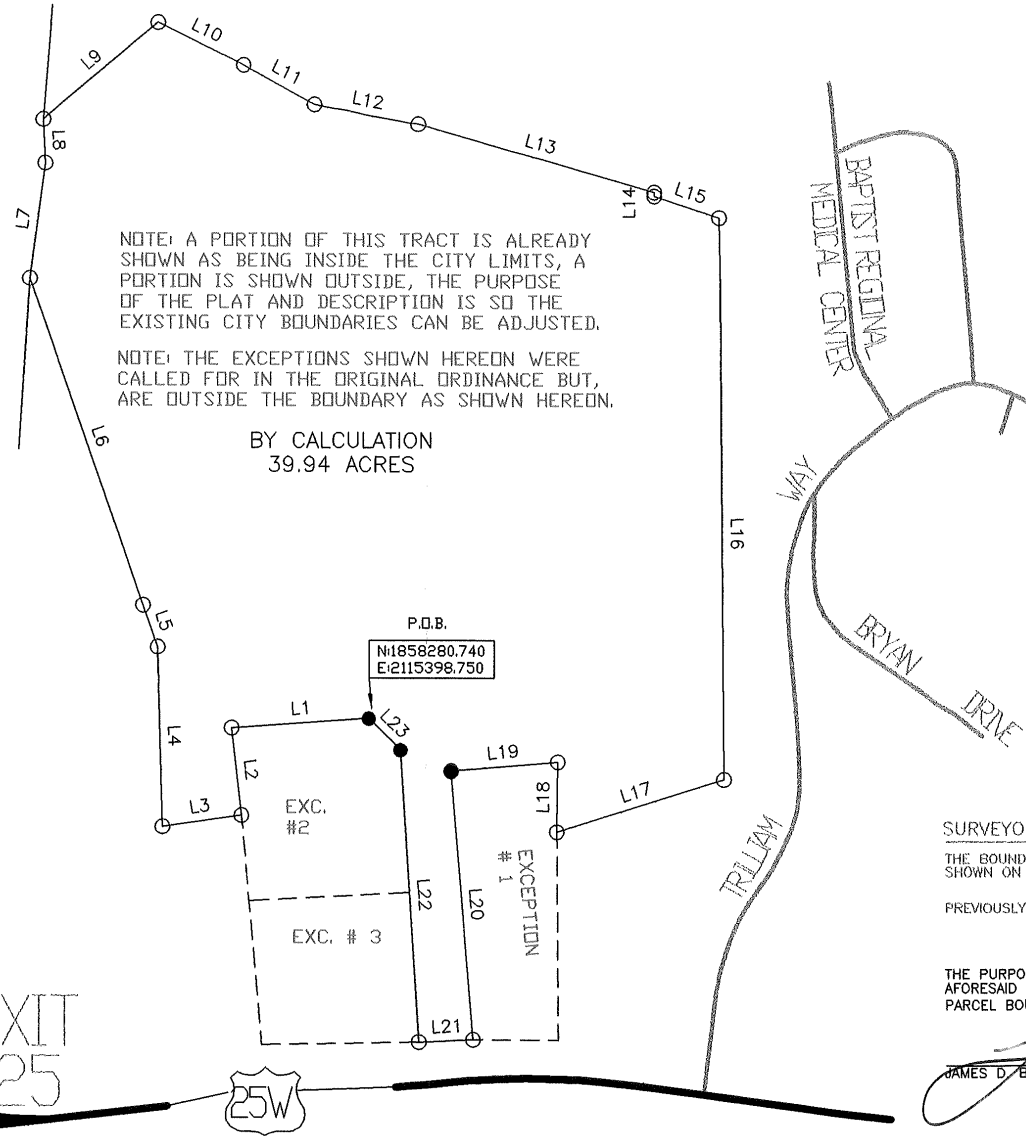


THE BEARINGS AND DISTANCES SHOWN HEREON HAVE BEEN ROTATED FROM THE ORIGINAL SUBMITTAL TO GET THE PARCEL ON STATE PLANE COORDINATES, AND ANY ERROR IN CLOSURE HAS BEEN FORCE CLOSED. ANY OVERLAPS IN PREVIOUS ANNEXATIONS WILL ALSO BE ADJUSTED TO MAKE EACH PARCEL MATCH TO ANY ADJACENT CITY BOUNDARIES OR NEWLY SUBMITTED ANNEXATIONS.

THE ONLY FIELD SURVEYING PERFORMED ON THIS PROJECT WAS GPS CONTROL POINTS WERE SET AND GROUND SURVEYING TO EACH PARCEL AND THE LOCATION OF AT LEAST 2 OF THE CORNERS CALLED FOR IN THE SURVEY INFORMATION ON ADJOINING OR A NEARBY ANNEXATION ORDINANCE AND MAY OR MAY NOT BE NOTED IN THE SURVEYORS CERTIFICATION AND THEN A ROTATION APPLIED.

LINE	BEARING	DISTANCE
L1	S 86°01'18" W	280.64'
L2	S 06°27'14" E	177.44'
L3	S 81°50'22" W	161.84'
L4	N 01°35'44" W	361.85'
L5	N 19°13'19" W	89.69'
L6	N 19°13'19" W	696.16'
L7	N 07°27'25" E	234.12'
L8	N 02°11'24" W	87.95'
L9	N 49°56'08" E	304.62'
L10	S 63°42'28" E	192.63'
L11	S 61°10'04" E	164.35'
L12	S 79°26'40" E	214.09'
L13	S 74°09'30" E	498.17'
L14	S 00°16'22" W	7.69'
L15	S 72°03'33" E	139.53'
L16	S 00°30'21" E	992.23'
L17	S 72°39'56" W	357.25'
L18	N 00°52'16" E	140.94'
L19	S 85°08'12" W	216.92'
L20	S 04°49'50" E	543.07'
L21	S 87°42'55" W	111.15'
L22	N 03°38'10" W	589.56'
L23	N 45°03'27" W	89.49'

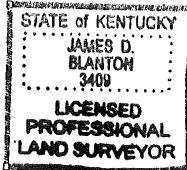
● FOUND STEEL ROD



NOTE: A PORTION OF THIS TRACT IS ALREADY SHOWN AS BEING INSIDE THE CITY LIMITS, A PORTION IS SHOWN OUTSIDE, THE PURPOSE OF THE PLAT AND DESCRIPTION IS SO THE EXISTING CITY BOUNDARIES CAN BE ADJUSTED.

NOTE: THE EXCEPTIONS SHOWN HEREON WERE CALLED FOR IN THE ORIGINAL ORDINANCE BUT, ARE OUTSIDE THE BOUNDARY AS SHOWN HEREON.

BY CALCULATION
39.94 ACRES



SURVEYORS CERTIFICATE

THE BOUNDARY OF ANNEXATION ORDINANCE NUMBER SHOWN ON THIS PLAT IS BASED UPON THE FOLLOWING

PREVIOUSLY SUBMITTED ANNEXATION ORDINANCE NUMBER

THE PURPOSE OF THE BOUNDARY SHOWN HEREON IS AFORESAID ANNEXATION. IT DOES NOT IN ANY WAY AFFECT PARCEL BOUNDARIES AND SHOULD NOT BE USED FOR

JAMES D. BLANTON KY. PLS # 3409

APPROVED BY: JDB

DWG. DATE: OCTOBER 20, 2008

DWG. PLT

DRAWN BY: JDB

JOB No.: CORBIN_CITY\CORBIN

ORD_9-2003.DWG

GRAPHIC SCALE



SCALE: 1 INCH = 300 FEET

ANNEXATION ORDINANCE NO.

9-2003

BLANTON LAND SURVEYING
Professional Land Surveyors



2121 S. MAIN STREET
CORBIN, KY. 40701
Phone (606) 523-5164
Phone (606) 864-8460
Fax (606) 523-8212

PREPARED BY:
CITY OF CORBIN