

## **RESOLUTION 35 -2008**

### **A RESOLUTION ADOPTING A MODERN AND ACCURATE LEGAL DESCRIPTION OF TERRITORY PREVIOUSLY ANNEXED BY ORDINANCE**

WHEREAS, the City of Corbin has enacted numerous ordinances annexing property into the corporate limits of the City of Corbin; and

WHEREAS, each individual annexation contains a prior survey prepared by now unknown individual, and further references documentation that is no longer in existence; and

WHEREAS, the City wishes to provide a modern, accurate, easily identifiable legal description reflecting bearings and coordinates based upon the state plane coordinate system, including relevant GPS and GIS data, same having been certified by a professional land surveyor for each prior annexation; and

WHEREAS, the City wishes to comply with the requirements of Amended KRS 81A.4 70 effective July 13, 2004; and

WHEREAS, the City does not intend to amend or replace its prior ordinance annexing, but rather to interpret the defined boundaries of the territory previously annexed and adopt a modern and accurate legal description of territory previously annexed.

NOW THEREFORE, BE IT RESOLVED BY THE COMMISSION OF THE CITY OF CORBIN, KENTUCKY:

SECTION 1. That the City Commission of the City Of Corbin hereby adopts the following legal descriptions, and plats attached hereto as prepared by James D. Blanton, Licensed Professional Land Surveyor No. 3409 by new survey as an accurate depiction of the property previously annexed into the corporate city limits of the City Of Corbin by Ordinance 10-98 dated Jul. 21, 1998 a copy attached hereto as Exhibit "2", and hereby adopts said new legal description and plat as the official legal description and plat to be adopted by the City for all purposes when referencing this prior annexation.

SECTION 2. This new legal description as prepared by James D. Blanton a Licensed Professional Land Surveyor No. 3409 is as follows:

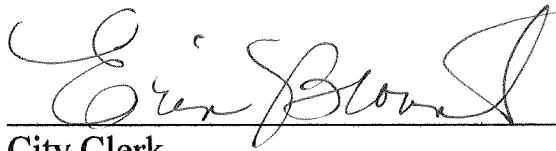
RECEIVED AND FILED  
DATE Nov. 14, 2008

TREY GRAYSON  
SECRETARY OF STATE  
COMMONWEALTH OF KENTUCKY  
BY Kandice Adkins

## CERTIFICATION

I, ERIN BLOUNT, Clerk of the City of Corbin, Kentucky do hereby certify that, the above Resolution 35 - 2008 is a true and correct copy as was presented to the City Council of the City Of Corbin, Kentucky at their regular schedule meeting dated November 10, 2008.

Given under my hand this 10<sup>th</sup> day of November, 2008.



\_\_\_\_\_  
City Clerk

(SEAL)

Office Address:  
2121 S. Main Street  
Corbin, Ky. 40701  
Phone: (606) 523-5164  
Phone: (606) 864-8460  
Fax: (606) 523-8212

# Blanton Land Surveying ANNEXATION

DESCRIPTION (ORDINANCE NUMBER 10-98 (TR. # 1 - 2 & 3)) THE BEARINGS AND DISTANCES SHOWN HEREON HAVE BEEN ROTATED FROM THE ORIGINAL SUBMITTAL TO GET THE PARCEL ON STATE PLANE COORDINATES NAD 1983, AND ANY ERROR IN CLOSURE HAS BEEN FORCE CLOSED. ANY OVERLAPS IN PREVIOUS ANNEXATIONS WILL ALSO BE ADJUSTED TO MAKE EACH PARCEL MATCH TO ANY ADJACENT CITY BOUNDARIES OR NEWLY SUBMITTED ANNEXATIONS. THE ONLY FIELD SURVEYING PERFORMED ON THIS PROJECT WAS GPS CONTROL POINTS WERE SET AND GROUND SURVEYING TO EACH PARCEL AND THE LOCATION OF AT LEAST 2 OF THE CORNERS CALLED FOR IN THE SURVEY INFORMATION (OR ADJACENT OR NEARBY ANNEXATIONS) AND MAY BE NOTED IN THE SURVEYORS CERTIFICATION AND THEN A ROTATION APPLIED.

(TRACT # 1) A CERTAIN TRACT OR PARCEL OF LAND IN CORBIN, KY. BEGINNING AT A POINT IN THE NE R\O\W OF US HWY 25 E, A COMMON CORNER TO ANNEXATION ORDINANCE # 5-95, (N: 1872760.201 E: 2130772.575), THENCE LEAVING SAID R\O\W: N38°27'17"E 452.77 FEET TO A FOUND IRON PIN RMF 3051, THENCE S51°05'51"E 588.11 FEET TO A POINT, S38°07'20"W 542.25 FEET TO A POINT IN THE AFOREMENTIONED R\O\W AND COMMON TO THE AFOREMENTIONED ANNEXATION ORDINANCE # 5-95, THENCE WITH SAID R\O\W AND SAID ORDINANCE: N47°19'20"W 616.95 FEET TO A POINT, N20°28'20"W 111.31 FEET TO THE BEGINNING AND CONTAINING 7.02 ACRES BY CALCULATION.

(TRACT #2 - EASEMENT) BEGINNING AT A POINT BEARING N38°27'17"E 115.00 FEET FROM THE BEGINNING CORNER OF TRACT # 1, THENCE N49°40'10"W 140.00 FEET TO THE R\O\W OF HWY 312, THENCE WITH SAID R\O\W: N17°07'55"E 38.08 FEET TO A POINT, THENCE LEAVING SAID R\O\W: S49°40'10"E 153.85 FEET TO A POINT IN THE LINE OF TRACT # 1, THENCE WITH SAID TRACT # 1: S38°27'17"W 35.02 FEET TO THE

BEGINNING.

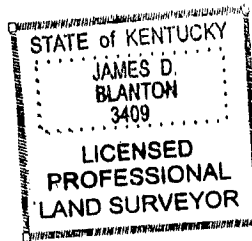
(TRACT # 3 EASEMENT) BEGINNING AT A POINT BEARING N38°27'17"E 392.02 FEET FROM THE BEGINNING CORNER OF TRACT # 1, THENCE N49°40'10"W 270.00 FEET TO A POINT IN THE R\O\W OF KY HWY 312, THENCE WITH SAID R\O\W: N10°54'20"E 40.18 FEET TO A POINT, THENCE LEAVING SAID R\O\W: S49°40'10"E 288.60 FEET TO A POINT IN THE LINE OF TRACT # 1, THENCE WITH SAME: S38°27'17"W35.02 FEET TO THE BEGINNING.

THE BOUNDARY OF ANNEXATION ORDINANCE 10-98 FOR THE CITY OF CORBIN, KY. DESCRIBED HEREON IS BASED UPON THE FOLLOWING INFORMATION. THE DESCRIPTION TAKEN FROM THE PREVIOUSLY SUBMITTED ORDINANCE 10-98 ROTATED TO STATE PLANE AND FORCE CLOSED, AND ANY OVERLAPS IN PREVIOUS OR ADJOINING ORDINANCES WILL ADJUSTED TO MAKE EACH PARCEL MATCH TO ANY ADJACENT CITY LIMIT BOUNDARIES OR NEWLY SUBMITTED ANNEXATION ORDINANCES.

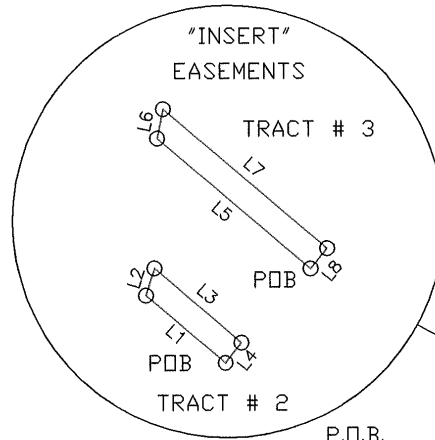
THE PURPOSE OF THE BOUNDARY DESCRIBED HEREON IS TO DELINIATE THE LIMITS OF THE AFORESAID ANNEXATION. IT DOES NOT IN ANY WAY REFLECT A DETERMINATION OF THE INDIVIDUAL PARCEL BOUNDARIES AND SHOULD NOT BE USED FOR THAT PURPOSE.

James D. Blanton PLS # 3409

10/30/08



LINE	BEARING	DISTANCE
L1	N 49°40'10" W	140.00'
L2	N 17°07'55" E	38.08'
L3	S 49°40'10" E	153.85'
L4	S 38°27'17" W	35.02'
L5	N 49°40'10" W	270.00'
L6	N 10°54'20" E	40.18'
L7	S 49°40'10" E	288.60'
L8	S 38°27'17" W	35.02'

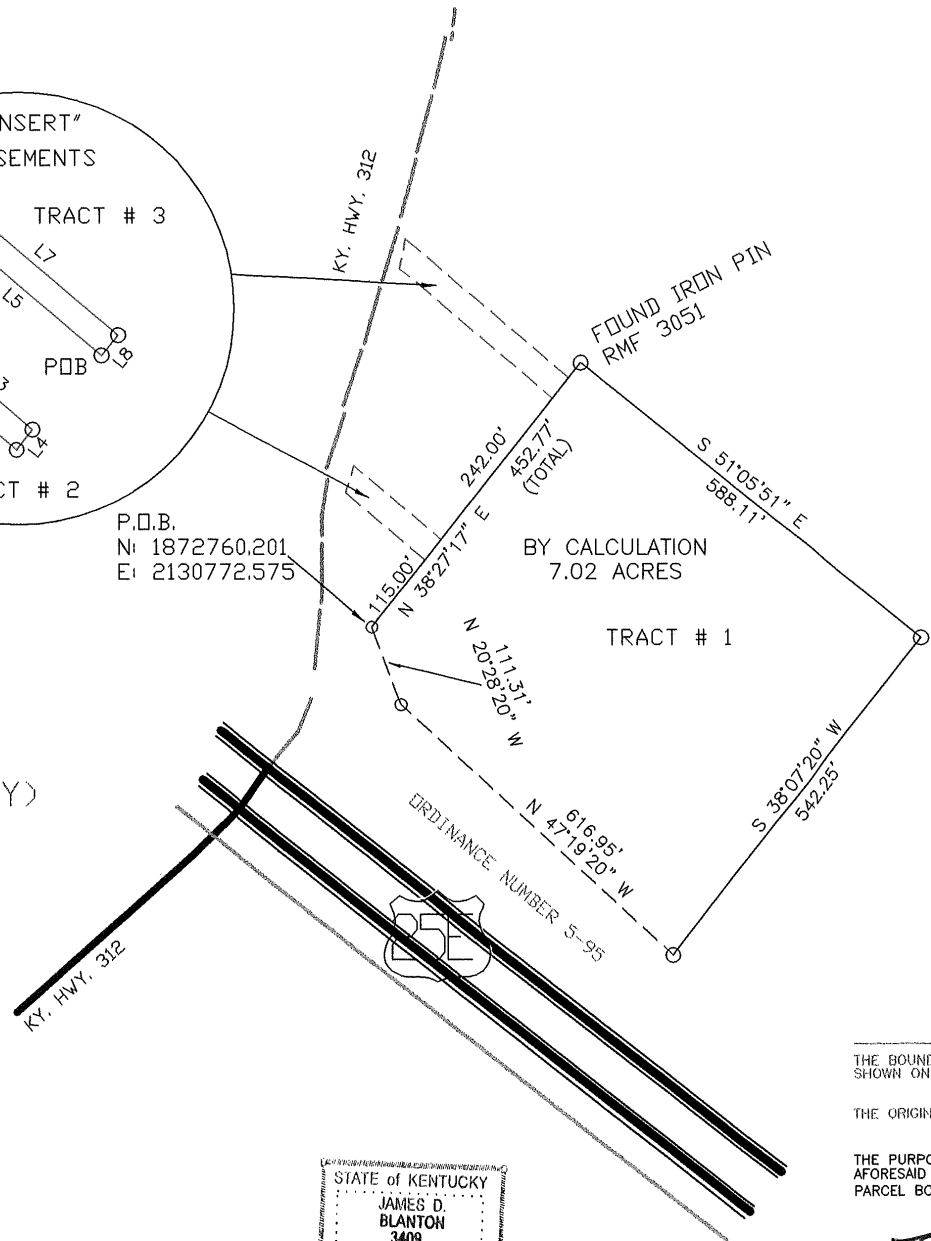


P.O.B.  
N: 1872760.201  
E: 2130772.575

ANNEXATION ORDINANCE NO.  
10-98  
TR# 1 (TR # 2 & # 3 ARE EASEMENTS ONLY)

THE BEARINGS AND DISTANCES SHOWN HEREON HAVE BEEN ROTATED FROM THE ORIGINAL SUBMITTAL TO GET THE PARCEL ON STATE PLANE COORDINATES, AND ANY ERROR IN CLOSURE HAS BEEN FORCE CLOSED. ANY OVERLAPS IN PREVIOUS ANNEXATIONS WILL ALSO BE ADJUSTED TO MAKE EACH PARCEL MATCH TO ANY ADJACENT CITY BOUNDARIES OR NEWLY SUBMITTED ANNEXATIONS.

THE ONLY FIELD SURVEYING PERFORMED ON THIS PROJECT WAS GPS CONTROL POINTS WERE SET AND GROUND SURVEYING TO EACH PARCEL AND THE LOCATION OF AT LEAST 2 OF THE CORNERS CALLED FOR IN THE SURVEY INFORMATION ON ADJOINING OR A NEARBY ANNEXATION ORDINANCE AND MAY OR MAY NOT BE NOTED IN THE SURVEYORS CERTIFICATION AND THEN A ROTATION APPLIED.

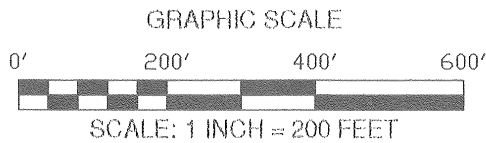


STATE OF KENTUCKY  
JAMES D.  
BLANTON  
3409  
LICENSED  
PROFESSIONAL  
LAND SURVEYOR

SURVEYORS  
THE BOUNDARY OF ANNEXATION OR  
SHOWN ON THIS PLAT IS BASED UPON  
THE ORIGINAL ANNEXATION ORDINANCE  
THE PURPOSE OF THE BOUNDARY OF  
AFORESAID ANNEXATION. IT DOES NOT  
PARCEL BOUNDARIES AND SHOULD NOT

JAMES D. BLANTON  
KY

APPROVED BY: JDB
DWG. DATE: OCTOBER 29, 2008
DRAWN BY: JDB
JOB NO.: CORBIN_CITY\CORBIN
ORD_10-98.DWG



BLANTON LAND SURVEYING  
Professional Land Surveyors

2121 S. MAIN STREET  
CORBIN, KY. 40701  
Phone (606) 523-5164  
Phone (606) 864-8460  
Fax (606) 523-8212

CITY