

## **RESOLUTION 28 -2008**

### **A RESOLUTION ADOPTING A MODERN AND ACCURATE LEGAL DESCRIPTION OF TERRITORY PREVIOUSLY ANNEXED BY ORDINANCE**

WHEREAS, the City of Corbin has enacted numerous ordinances annexing property into the corporate limits of the City of Corbin; and

WHEREAS, each individual annexation contains a prior survey prepared by now unknown individual, and further references documentation that is no longer in existence; and

WHEREAS, the City wishes to provide a modern, accurate, easily identifiable legal description reflecting bearings and coordinates based upon the state plane coordinate system, including relevant GPS and GIS data, same having been certified by a professional land surveyor for each prior annexation; and

WHEREAS, the City wishes to comply with the requirements of Amended KRS 81A.4 70 effective July 13, 2004; and

WHEREAS, the City does not intend to amend or replace its prior ordinance annexing, but rather to interpret the defined boundaries of the territory previously annexed and adopt a modern and accurate legal description of territory previously annexed.

NOW THEREFORE, BE IT RESOLVED BY THE COMMISSION OF THE CITY OF CORBIN, KENTUCKY:

SECTION 1. That the City Commission of the City Of Corbin hereby adopts the following legal descriptions, and plats attached hereto as prepared by James D. Blanton, Licensed Professional Land Surveyor No. 3409 by new survey as an accurate depiction of the property previously annexed into the corporate city limits of the City Of Corbin by Ordinance 6-2006 dated August 14, 2006 a copy attached hereto as Exhibit "2", and hereby adopts said new legal description and plat as the official legal description and plat to be adopted by the City for all purposes when referencing this prior annexation.

SECTION 2. This new legal description as prepared by James D. Blanton a Licensed Professional Land Surveyor No. 3409 is as follows:

## CERTIFICATION

I, ERIN BLOUNT, Clerk of the City of Corbin, Kentucky do hereby certify that, the above Resolution 28 - 2008 is a true and correct copy as was presented to the City Council of the City Of Corbin, Kentucky at their regular schedule meeting dated October 29, 2008.

Given under my hand this 29<sup>th</sup> day of October, 2008.



City Clerk

(SEAL)

RECEIVED AND FILED  
DATE Dec. 24, 2008

TREY GRAYSON  
SECRETARY OF STATE  
COMMONWEALTH OF KENTUCKY  
BY Handie Adkinson

Office Address:  
2121 S. Main Street  
Corbin, Ky. 40701  
Phone: (606) 523-5164  
Phone: (606) 864-8460  
Fax: (606) 523-8212

# Blanton Land Surveying

## ANNEXATION DESCRIPTION (ORDINANCE NUMBER 6-2006) TRACT # 1

THE BEARINGS AND DISTANCES SHOWN HEREON HAVE BEEN ROTATED FROM THE ORIGINAL SUBMITTAL TO GET THE PARCEL ON STATE PLANE COORDINATES NAD 1983, AND ANY ERROR IN CLOSURE HAS BEEN FORCE CLOSED. ANY OVERLAPS IN PREVIOUS ANNEXATIONS WILL ALSO BE ADJUSTED TO MAKE EACH PARCEL MATCH TO ANY ADJACENT CITY BOUNDARIES OR NEWLY SUBMITTED ANNEXATIONS. THE ONLY FIELD SURVEYING PERFORMED ON THIS PROJECT WAS GPS CONTROL POINTS WERE SET AND GROUND SURVEYING TO EACH PARCEL AND THE LOCATION OF AT LEAST 2 OF THE CORNERS CALLED FOR IN THE SURVEY INFORMATION (OR ADJACENT OR NEARBY ANNEXATIONS) AND MAY BE NOTED IN THE SURVEYORS CERTIFICATION AND THEN A ROTATION APPLIED.

A CERTAIN TRACT OR PARCEL OF LAND IN CORBIN, KY.

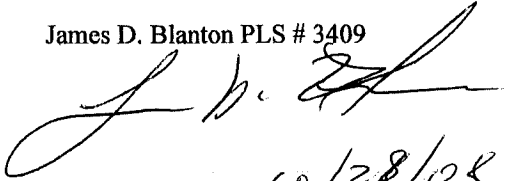
BEGINNING AT A FOUND STEEL ROD IN THE WEST R-O-W OF BACON CREEK ROAD (N1855467.674 E 2117816.948), THENCE WITH SAID R-O-W: S15°07'37"W 94.30 FEET TO A FOUND CROSS-TIE FENCE POST, THENCE LEAVING SAID R-O-W: S79°27'44"W 310.00 FEET TO A POINT, N74°41'36"W 151.93 FEET TO A POINT, N68°11'36"W 305.25 FEET TO A POINT, S20°18'24"W 155.75 FEET TO A POINT, S03°57'24"W 342.14 FEET TO A POINT, S02°32'36"E 343.00 FEET TO A POINT, N59°07'36"W 284.41 FEET TO A POINT, N67°47'36"W 67.73 FEET TO A POINT, N82°26'36"W 57.01 FEET TO A POINT, N84°24'36"W 87.79 FEET TO A POINT, N80°07'36"W 116.00 FEET TO A POINT, N87°56'36"W 75.78 FEET TO A POINT, S76°06'24"W 75.57 FEET TO A POINT, S62°15'24"W 108.25 FEET TO A POINT, S62°17'24"W 146.76 FEET TO A POINT, S65°19'24"W 95.33 FEET TO A POINT, S60°28'24"W 80.17 FEET TO A POINT, S55°52'24"W 295.08 FEET TO A POINT, S77°12'24"W 57.07 FEET TO A POINT, N89°42'36"W 122.07 FEET TO A POINT, N78°17'36"W 189.93 FEET TO A POINT, S85°40'24"W 39.16 FEET TO A POINT, N23°56'36"W 7.27 FEET TO A POINT, N11°35'36"W 94.03 FEET TO A POINT, N05°06'24"E 51.25 FEET TO A POINT, N17°15'57"E 276.04 FEET TO A POINT, N47°51'28"E 275.46 FEET TO A POINT, N37°42'06"E 327.77 FEET TO A POINT, N36°50'13"E 290.69 FEET TO A POINT, N48°49'28"E 124.29 FEET TO A POINT, N37°01'34"E 373.72 FEET TO A POINT, S66°26'59"E 234.67 FEET TO A POINT, S66°26'59"E 234.67 FEET TO A POINT, S73°49'19"E 162.46 FEET TO A POINT, S73°34'04"E 174.53 FEET TO A POINT, S73°17'43"E 204.73 FEET TO A POINT, S74°06'14"E 205.62 FEET TO A POINT, S72°31'12"E 326.32 FEET TO A POINT, S74°01'44"E 107.69 FEET TO A POINT, S75°18'17"E 264.22 FEET TO THE BEGINNING AND CONTAINING 39.94 ACRES BY CALCULATION.

THE BOUNDARY OF ANNEXATION ORDINANCE 6-2006 FOR THE CITY OF CORBIN, KY. DESCRIBED HEREON IS BASED UPON THE FOLLOWING INFORMATION. THE DESCRIPTION TAKEN FROM THE PREVIOUSLY SUBMITTED ORDINANCE 6-2006 ROTATED TO STATE PLANE AND FORCE CLOSED, AND ANY OVERLAPS IN PREVIOUS OR ADJOINING ORDINANCES WILL ADJUSTED TO MAKE EACH PARCEL

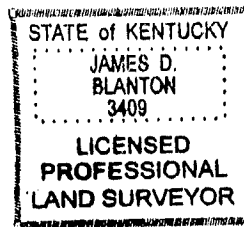
MATCH TO ANY ADJACENT CITY LIMIT BOUNDARIES OR NEWLY SUBMITTED ANNEXATION ORDINANCES.

THE PURPOSE OF THE BOUNDARY DESCRIBED HEREON IS TO DELINIATE THE LIMITS OF THE AFORESAID ANNEXATION. IT DOES NOT IN ANY WAY REFLECT A DETERMINATION OF THE INDIVIDUAL PARCEL BOUNDARIES AND SHOULD NOT BE USED FOR THAT PURPOSE.

James D. Blanton PLS # 3409



10/28/08



Office Address:  
2121 S. Main Street  
Corbin, Ky. 40701  
Phone: (606) 523-5164  
Phone: (606) 864-8460  
Fax: (606) 523-8212

# Blanton Land Surveying

## ANNEXATION DESCRIPTION (ORDINANCE NUMBER 6-2006) TRACT # 2

THE BEARINGS AND DISTANCES SHOWN HEREON HAVE BEEN ROTATED FROM THE ORIGINAL SUBMITTAL TO GET THE PARCEL ON STATE PLANE COORDINATES NAD 1983, AND ANY ERROR IN CLOSURE HAS BEEN FORCE CLOSED. ANY OVERLAPS IN PREVIOUS ANNEXATIONS WILL ALSO BE ADJUSTED TO MAKE EACH PARCEL MATCH TO ANY ADJACENT CITY BOUNDARIES OR NEWLY SUBMITTED ANNEXATIONS. THE ONLY FIELD SURVEYING PERFORMED ON THIS PROJECT WAS GPS CONTROL POINTS WERE SET AND GROUND SURVEYING TO EACH PARCEL AND THE LOCATION OF AT LEAST 2 OF THE CORNERS CALLED FOR IN THE SURVEY INFORMATION (OR ADJACENT OR NEARBY ANNEXATIONS) AND MAY BE NOTED IN THE SURVEYORS CERTIFICATION AND THEN A ROTATION APPLIED.

A CERTAIN TRACT OR PARCEL OF LAND IN CORBIN, KY.  
BEGINNING AT A FOUND CROSS-TIE FENCE POST ON THE WESY SIDE OF BACON CREEK ROAD A CORNER COMMON TO ORD NO. 6-2006 TR# 1 (N:1855376.641 E: 2117792.340), THENCE WITH BACON CREEK ROAD: S26°28'57"W 408.65 FEET TO A POINT, LEAVING SAID ROAD: S87°44'40"W 630.64 FEET TO A POINT, CORNER IN THE AFOREMENTIONED ORD NO. 6-2006 TR# 1, THENCE WITH SAME: N03°57'24"E 342.14 FEET TO A POINT, N20°18'24"E 155.75 FEET TO A POINT, S68°11'36"E 305.25 FEET TO A POINT, S74°41'36"E 151.93 FEET TO A POINT, N79°27'44"E 310.00 FEET TO THE BEGINNING AND CONTAINING 6.09 ACRES BY CALCULATION.

THE BOUNDARY OF ANNEXATION ORDINANCE 6-2006 FOR THE CITY OF CORBIN, KY. DESCRIBED HEREON IS BASED UPON THE FOLLOWING INFORMATION. THE DESCRIPTION TAKEN FROM THE PREVIOUSLY SUBMITTED ORDINANCE 6-2006 ROTATED TO STATE PLANE AND FORCE CLOSED, AND ANY OVERLAPS IN PREVIOUS OR ADJOINING ORDINANCES WILL ADJUSTED TO MAKE EACH PARCEL MATCH TO ANY ADJACENT CITY LIMIT BOUNDARIES OR NEWLY SUBMITTED ANNEXATION ORDINANCES.

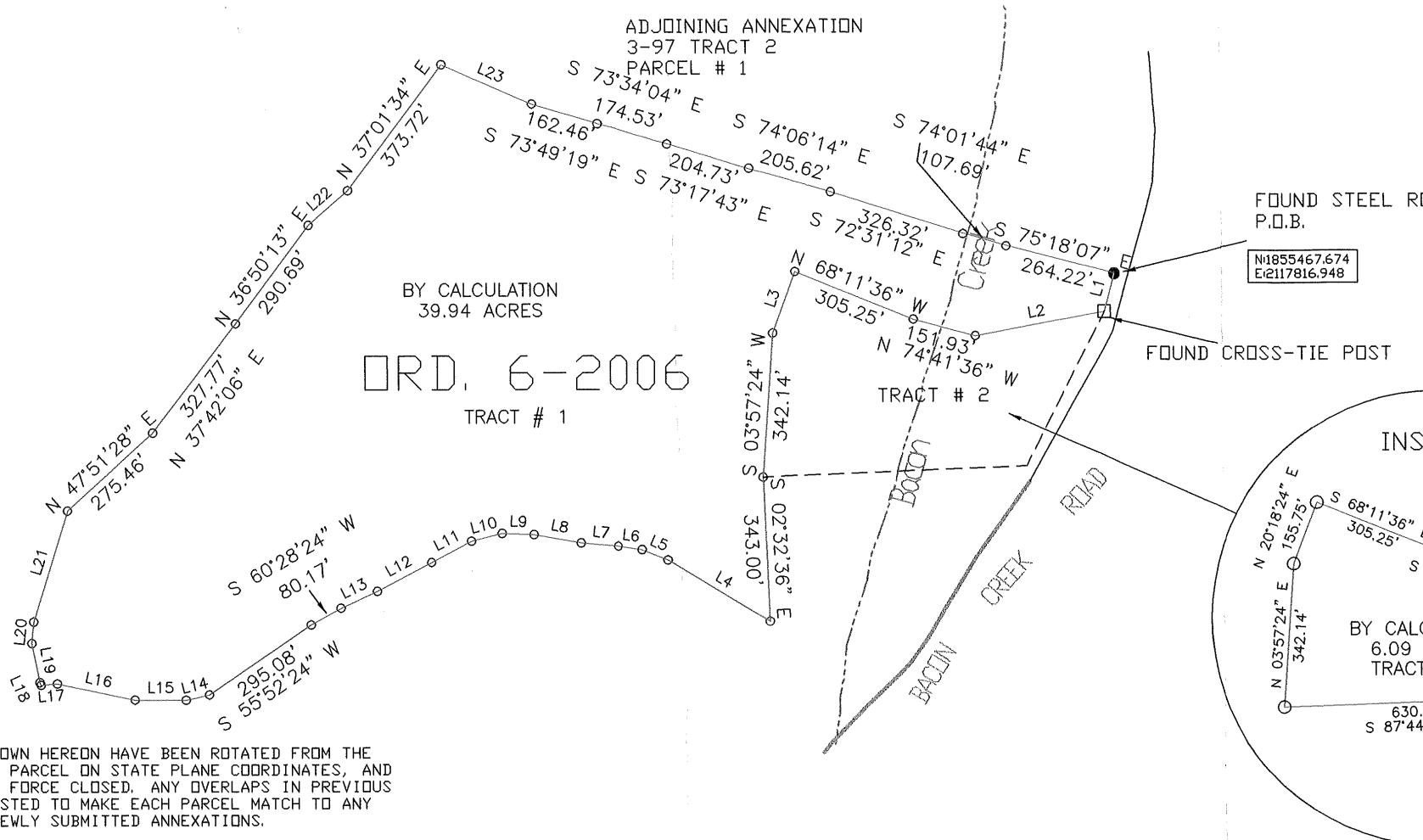
THE PURPOSE OF THE BOUNDARY DESCRIBED HEREON IS TO DELINIATE THE LIMITS OF THE AFORESAID ANNEXATION. IT DOES NOT IN ANY WAY REFLECT A DETERMINATION OF THE INDIVIDUAL PARCEL BOUNDARIES AND SHOULD NOT BE USED FOR THAT PURPOSE.

James D. Blanton PLS # 3409

10/28/08



LINE	BEARING	DISTANCE
L1	S 15°07'37" W	94.30'
L2	S 79°27'44" W	310.00'
L3	S 20°18'24" W	155.75'
L4	N 59°07'36" W	284.41'
L5	N 67°47'36" W	67.73'
L6	N 82°26'36" W	57.01'
L7	N 84°24'36" W	87.79'
L8	N 80°07'36" W	116.00'
L9	N 87°56'36" W	75.78'
L10	S 76°06'24" W	75.57'
L11	S 62°15'24" W	108.25'
L12	S 62°17'24" W	146.76'
L13	S 65°19'24" W	95.33'
L14	S 77°12'24" W	57.07'
L15	N 89°42'36" W	122.07'
L16	N 78°17'36" W	189.93'
L17	S 85°40'24" W	39.16'
L18	N 23°56'36" W	7.27'
L19	N 11°35'36" W	94.03'
L20	N 05°06'24" E	51.25'
L21	N 17°15'57" E	276.04'
L22	N 48°49'28" E	124.29'
L23	S 66°26'59" E	234.67'



THE BEARINGS AND DISTANCES SHOWN HEREON HAVE BEEN ROTATED FROM THE ORIGINAL SUBMITTAL TO GET THE PARCEL ON STATE PLANE COORDINATES, AND ANY ERROR IN CLOSURE HAS BEEN FORCE CLOSED. ANY OVERLAPS IN PREVIOUS ANNEXATIONS WILL ALSO BE ADJUSTED TO MAKE EACH PARCEL MATCH TO ANY ADJACENT CITY BOUNDARIES OR NEWLY SUBMITTED ANNEXATIONS.

THE ONLY FIELD SURVEYING PERFORMED ON THIS PROJECT WAS GPS CONTROL POINTS WERE SET AND GROUND SURVEYING TO EACH PARCEL AND THE LOCATION OF AT LEAST 2 OF THE CORNERS CALLED FOR IN THE SURVEY INFORMATION OR ADJOINING OR A NEARBY ANNEXATION ORDINANCE AND MAY OR MAY NOT BE NOTED IN THE SURVEYORS CERTIFICATION AND THEN A ROTATION APPLIED.

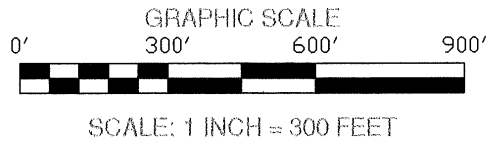
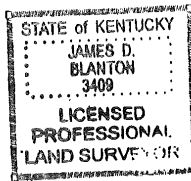
**SURVEYORS CERTIFICATE**

THE BOUNDARY OF ANNEXATION ORDINANCE NUMBER 6-2006 FOR THE CITY OF CORBIN, KY. SHOWN ON THIS PLAT IS BASED UPON THE FOLLOWING INFORMATION.

PREVIOUSLY SUBMITTED ANNEXATION ORDINANCE NO. 6-2006

THE PURPOSE OF THE BOUNDARY SHOWN HEREON IS TO DELINEATE THE LIMITS OF THE AFORESAID ANNEXATION. IT DOES NOT IN ANY WAY REFLECT A DETERMINATION OF THE INDIVIDUAL PARCEL BOUNDARIES AND SHOULD NOT BE USED FOR THAT PURPOSE.

*[Signature]*  
 JAMES D. BLANTON KY. PLS # 3409 DATE 10/28/08



ANNEXATION ORDINANCE NO.  
 6-2006 (TRACT 1 & 2)

APPROVED BY: JDB
DWG. DATE: OCTOBER 28, 2008
DWG. PLT
DRAWN BY: JDB
JOB NO.: CITY\CORBIN_ORD
_6-2006.DWG

**BLANTON LAND SURVEYING**  
*Professional Land Surveyors*

2121 S. MAIN STREET  
 CORBIN, KY. 40701  
 Phone (606) 523-5164  
 Phone (606) 864-8460  
 Fax (606) 523-8212

PREPARED BY  
 CITY OF CORBIN