

RESOLUTION 2 -2009

A RESOLUTION ADOPTING A MODERN AND ACCURATE LEGAL DESCRIPTION OF TERRITORY PREVIOUSLY ANNEXED BY ORDINANCE

WHEREAS, the City of Corbin has enacted numerous ordinances annexing property into the corporate limits of the City of Corbin; and

WHEREAS, each individual annexation contains a prior survey prepared by now unknown individual, and further references documentation that is no longer in existence; and

WHEREAS, the City wishes to provide a modern, accurate, easily identifiable legal description reflecting bearings and coordinates based upon the state plane coordinate system, including relevant GPS and GIS data, same having been certified by a professional land surveyor for each prior annexation; and

WHEREAS, the City wishes to comply with the requirements of Amended KRS 81A.4 70 effective July 13, 2004; and

WHEREAS, the City does not intend to amend or replace its prior ordinance annexing, but rather to interpret the defined boundaries of the territory previously annexed and adopt a modern and accurate legal description of territory previously annexed.

NOW THEREFORE, BE IT RESOLVED BY THE COMMISSION OF THE CITY OF CORBIN, KENTUCKY:

SECTION 1. That the City Commission of the City Of Corbin hereby adopts the following legal descriptions, and plats attached hereto as prepared by James D. Blanton, Licensed Professional Land Surveyor No. 3409 by new survey as an accurate depiction of the property previously annexed into the corporate city limits of the City Of Corbin by Ordinance 11-98 dated July 21, 1998 a copy attached hereto as Exhibit "2", and hereby adopts said new legal description and plat as the official legal description and plat to be adopted by the City for all purposes when referencing this prior annexation.

SECTION 2. This new legal description as prepared by James D. Blanton a Licensed Professional Land Surveyor No. 3409 is as follows:

CERTIFICATION

I, Erin Blount, Clerk of the City of Corbin, Kentucky do hereby certify that, the above Resolution 2 - 2009 is a true and correct copy as was presented to the City Council of the City Of Corbin, Kentucky at their regular schedule meeting dated January 12, 2009.

Given under my hand this 12th day of January, 2009.

Erin Blount
City Clerk

(SEAL)

RECEIVED AND FILED
DATE January 16, 2009

TREY GRAYSON
SECRETARY OF STATE
COMMONWEALTH OF KENTUCKY
BY Gandie Adkinson

Office Address:
2121 S. Main Street
Corbin, Ky. 40701
Phone: (606) 523-5164
Phone: (606) 864-8460
Fax: (606) 523-8212

Blanton Land Surveying

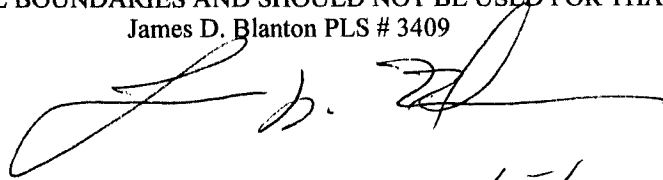
ANNEXATION DESCRIPTION (ORDINANCE NUMBER 11-98)

THE BEARINGS AND DISTANCES SHOWN HEREON HAVE BEEN ROTATED FROM THE ORIGINAL SUBMITTAL TO GET THE PARCEL ON STATE PLANE COORDINATES NAD 1983, AND ANY ERROR IN CLOSURE HAS BEEN FORCE CLOSED. ANY OVERLAPS IN PREVIOUS ANNEXATIONS WILL ALSO BE ADJUSTED TO MAKE EACH PARCEL MATCH TO ANY ADJACENT CITY BOUNDARIES OR NEWLY SUBMITTED ANNEXATIONS. THE ONLY FIELD SURVEYING PERFORMED ON THIS PROJECT WAS GPS CONTROL POINTS WERE SET AND GROUND SURVEYING TO EACH PARCEL AND THE LOCATION OF AT LEAST 2 OF THE CORNERS CALLED FOR IN THE SURVEY INFORMATION (OR ADJACENT OR NEARBY ANNEXATIONS) AND MAY OR MAY NOT BE NOTED IN THE SURVEYORS CERTIFICATION AND THEN A ROTATION APPLIED.

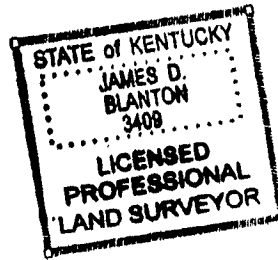
A CERTAIN TRACT OR PARCEL OF LAND IN CORBIN, KY. BEGINNING AT A FOUND PIPE ON THE SW SIDE OF SCUFFLETOWN ROAD (N:1855483.572 E: 2104211.382), THENCE WITH SAID ROAD S64°16'32"E 104.09 FEET TO A POINT, S67°39'32"E 83.69 FEET TO A STEEL ROD (PLS 3358), THENCE LEAVING SAID ROAD S03°40'12"E 302.81 FEET TO A STEEL ROD (PLS 3358), S81°16'27"W 123.70 FEET TO A STEEL ROD (PLS 3358) IN A CREEK, THENCE WITH SAID CREEK: S55°03'21"E 38.60 FEET TO A POINT, S41°00'22"E 39.74 FEET TO A POINT, S16°50'51"W 14.48 FEET TO A POINT, S17°31'24"E 18.18 FEET TO A POINT, S22°38'57"W 12.24 FEET TO A POINT, S24°26'47"E 25.12 FEET TO A POINT, S41°37'03"E 34.75 FEET TO A POINT, S23°10'57"W 14.80 FEET TO A POINT, S18°07'05"E 85.02 FEET TO A POINT, S39°58'15"E 53.63 FEET TO A POINT, S53°09'41"E 46.33 FEET TO A STEEL ROD (PLS 3358) IN THE R-O-W OF US HWY 25W, THENCE WITH SAME S20°50'56"W 257.19 FEET TO A STEEL ROD (PLS 3358) A COMMON CORNER TO ANNEXATION ORDINANCE NUMBER 9-86, THENCE WITH SAID ORDINANCE NUMBER 9-86: N76°26'52"W 71.20 FEET TO A STEEL ROD (PLS 3358), S81°27'30"W 30.34 FEET TO A STEEL ROD (PLS 3358), S27°13'07"W 75.50 FEET TO A STEEL ROD (PLS 3358), N33°48'17"W 158.09 FEET TO A STEEL ROD (PLS 3358), S44°20'47"W 190.27 FEET TO A STEEL ROD (PLS 3358), N47°35'35"W 103.00 FEET TO A STEEL ROD (PLS 3358), N33°08'01"W 191.05 FEET TO A STEEL ROD (PLS 3358), N31°26'16"W 155.23 FEET TO A STEEL ROD AND CAP (PLS 3358) N69°08'37"W 60.45 FEET TO A FOUND CROSS-TIE POST WITH 3/8" REBAR AT BASE, THENCE LEAVING SAID ANNEXATION ORDINANCE NUMBER 9-86 AND RUNNING: N00°09'31"E 74.88 FEET TO A STEEL ROD (PLS 2581), N01°03'12"E 120.72 FEET TO A STEEL ROD (PLS 2581), N07°47'27"E 89.36 FEET TO A STEEL ROD (PLS 3358), N01°55'31"E 68.84 FEET TO A STEEL ROD (PLS 3358), N00°27'50"E 128.97 FEET TO A STEEL ROD (PLS 3358), N01°47'30"E 122.94 FEET TO A FOUND STEEL PIPE, S56°07'48"E 409.63 FEET TO A STEEL ROD (PLS 3358), S80°45'55"E 55.94 FEET TO A STEEL ROD (PLS 3358), N21°17'27"E 272.38 FEET TO THE BEGINNING AND CONTAINING 11.99 ACRES BY

CALCULATION. THE BOUNDARY OF ANNEXATION ORDINANCE 11-98 FOR THE CITY OF CORBIN, KY. DESCRIBED HEREON IS BASED UPON THE FOLLOWING INFORMATION. THE DESCRIPTION TAKEN FROM THE PREVIOUSLY SUBMITTED ORDINANCE AND A NEW SURVEY PERFORMED ON THE SAME PROPERTY BY H&R SURVEYING, THEN ROTATED TO STATE PLANE COORDINATES, AND ANY OVERLAPS IN PREVIOUS OR ADJOINING ORDINANCES WILL ADJUSTED TO MAKE EACH PARCEL MATCH TO ANY ADJACENT CITY LIMIT BOUNDARIES OR NEWLY SUBMITTED ANNEXATION ORDINANCES. THE PURPOSE OF THE BOUNDARY DESCRIBED HEREON IS TO DELINIATE THE LIMITS OF THE AFORESAID ANNEXATION. IT DOES NOT IN ANY WAY REFLECT A DETERMINATION OF THE INDIVIDUAL PARCEL BOUNDARIES AND SHOULD NOT BE USED FOR THAT PURPOSE.

James D. Blanton PLS # 3409



1/5/09

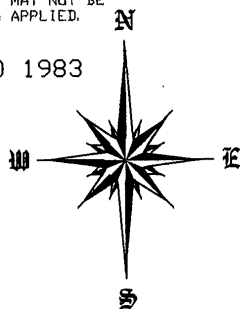


THE BEARINGS AND DISTANCES SHOWN HEREON HAVE BEEN ROTATED FROM THE ORIGINAL SUBMITTAL TO GET THE PARCEL ON STATE PLANE COORDINATES, AND ANY ERROR IN CLOSURE HAS BEEN FORCE CLOSED. ANY OVERLAPS IN PREVIOUS ANNEXATIONS WILL ALSO BE ADJUSTED TO MAKE EACH PARCEL MATCH TO ANY ADJACENT CITY BOUNDARIES OR NEWLY SUBMITTED ANNEXATIONS.

THE ONLY FIELD SURVEYING PERFORMED ON THIS PROJECT WAS GPS CONTROL POINTS WERE SET AND GROUND SURVEYING TO EACH PARCEL AND THE LOCATION OF AT LEAST 2 OF THE CORNERS CALLED FOR IN THE SURVEY INFORMATION ON ADJOINING OR A NEARBY ANNEXATION ORDINANCE AND MAY OR MAY NOT BE NOTED IN THE SURVEYORS CERTIFICATION AND THEN A ROTATION APPLIED.

LINE	BEARING	DISTANCE
L1	S 55°03'21" E	38.60'
L2	S 41°00'22" E	39.74'
L3	S 16°50'51" W	14.48'
L4	S 17°31'24" E	18.18'
L5	S 22°38'57" W	12.24'
L6	S 24°28'47" E	25.12'
L7	S 41°37'03" E	34.75'
L8	S 23°10'57" W	14.80'
L9	S 18°07'05" E	85.02'
L10	S 39°58'16" E	53.63'
L11	S 53°09'41" E	48.33'

GRID NORTH NAD 1983
KY. SOUTH



GRAPHIC SCALE

SCALE: 1 INCH = 150 FEET



SURVEYORS CERTIFICATE

THE BOUNDARY OF ANNEXATION ORDINANCE NUMBER 11-98 FOR THE CITY OF CORBIN, KY. SHOWN ON THIS PLAT IS BASED UPON THE FOLLOWING INFORMATION.

THE ORIGINAL 11-98 ANNEXATION ORDINANCE NUMBER 11-98

THE PURPOSE OF THE BOUNDARY SHOWN HEREON IS TO DELINEATE THE LIMITS OF THE AFORESAID ANNEXATION. IT DOES NOT IN ANY WAY REFLECT A DETERMINATION OF THE INDIVIDUAL PARCEL BOUNDARIES AND SHOULD NOT BE USED FOR THAT PURPOSE.

JAMES D. BLANTON

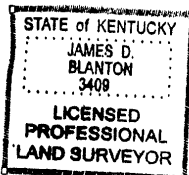
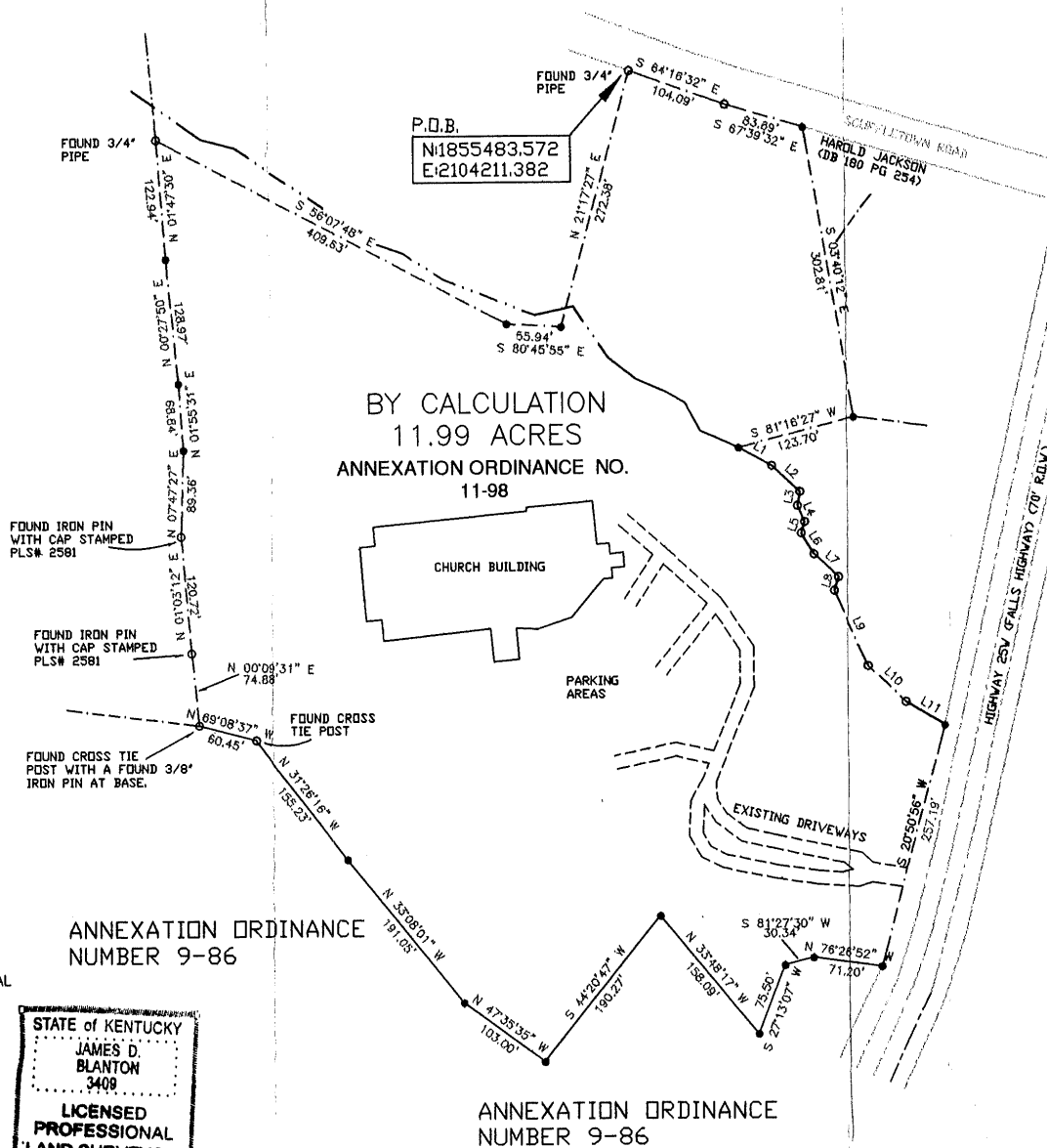
KY. PLS # 3409

DATE

1/5/09

LEGEND

- LINES JOINING OTHER ORDINANCES
- CALLED FOR 1/2" BY 18" IRON PIN WITH AN ORANGE PLASTIC CAP STAMPED H&R PLS# 3358
- FOUND CORNER MONUMENT OR MEANDER POINT.



APPROVED BY: JDB
DRAWN BY: JDB
JDB
DATE: DEC. 31, 2008
DWG. NO.: CORBIN_CITY\CORBIN
ORD_11-98.DWG

SITE LOCATION: JUST SOUTHWEST OF THE INTERSECTION OF KY HIGHWAY 25W AND SCUFFLETOWN ROAD, IN CORBIN, WHITLEY COUNTY KY.

BLANTON LAND SURVEYING
Professional Land Surveyors

2121 S. MAIN STREET
CORBIN, KY. 40701
Phone (606) 523-5164
Fax (606) 523-8212

PREPARED FOR:
CITY OF CORBIN

ANNEXATION ORD
11-98