

RESOLUTION 13 -2009

A RESOLUTION ADOPTING A MODERN AND ACCURATE LEGAL DESCRIPTION OF TERRITORY PREVIOUSLY ANNEXED BY ORDINANCE

WHEREAS, the City of Corbin has enacted numerous ordinances annexing property into the corporate limits of the City of Corbin; and

WHEREAS, each individual annexation contains a prior survey prepared by now unknown individual, and further references documentation that is no longer in existence; and

WHEREAS, the City wishes to provide a modern, accurate, easily identifiable legal description reflecting bearings and coordinates based upon the state plane coordinate system, including relevant GPS and GIS data, same having been certified by a professional land surveyor for each prior annexation; and

WHEREAS, the City wishes to comply with the requirements of Amended KRS 81A.4 70 effective July 13, 2004; and

WHEREAS, the City does not intend to amend or replace its prior ordinance annexing, but rather to interpret the defined boundaries of the territory previously annexed and adopt a modern and accurate legal description of territory previously annexed.

NOW THEREFORE, BE IT RESOLVED BY THE COMMISSION OF THE CITY OF CORBIN, KENTUCKY:

SECTION 1. That the City Commission of the City Of Corbin hereby adopts the following legal descriptions, and plats attached hereto as prepared by James D. Blanton, Licensed Professional Land Surveyor No. 3409 by new survey as an accurate depiction of the property previously annexed into the corporate city limits of the City Of Corbin by Ordinance 8-2008 dated June 27, 2008 a copy attached hereto as Exhibit "2", and hereby adopts said new legal description and plat as the official legal description and plat to be adopted by the City for all purposes when referencing this prior annexation.

SECTION 2. This new legal description as prepared by James D. Blanton a Licensed Professional Land Surveyor No. 3409 is as follows:

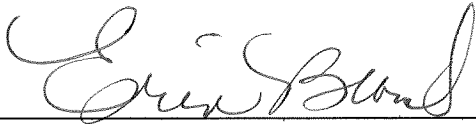
RECEIVED AND FILED
DATE Feb 11, 2009

TREY GRAYSON
SECRETARY OF STATE
COMMONWEALTH OF KENTUCKY
BY Kandice Adkinson

CERTIFICATION

I, Erin Blount, Clerk of the City of Corbin, Kentucky do hereby certify that, the above Resolution 13 - 2009 is a true and correct copy as was presented to the City Council of the City Of Corbin, Kentucky at their regular schedule meeting dated February 09, 2009.

Given under my hand this 9th day of February, 2009.



City Clerk

(SEAL)

Office Address:
2121 S. Main Street
Corbin, Ky. 40701
Phone: (606) 523-5164
Phone: (606) 864-8460
Fax: (606) 523-8212

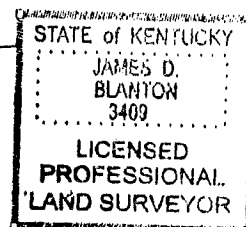
Blanton Land Surveying

ANNEXATION DESCRIPTION (ORDINANCE NUMBER 8-2008)

THE BEARINGS AND DISTANCES SHOWN HEREON HAVE BEEN ROTATED FROM THE ORIGINAL SUBMITTAL TO GET THE PARCEL ON STATE PLANE COORDINATES NAD 1983, AND ANY ERROR IN CLOSURE HAS BEEN FORCE CLOSED. ANY OVERLAPS IN PREVIOUS ANNEXATIONS WILL ALSO BE ADJUSTED TO MAKE EACH PARCEL MATCH TO ANY ADJACENT CITY BOUNDARIES OR NEWLY SUBMITTED ANNEXATIONS. THE ONLY FIELD SURVEYING PERFORMED ON THIS PROJECT WAS GPS CONTROL POINTS WERE SET AND GROUND SURVEYING TO EACH PARCEL AND THE LOCATION OF AT LEAST 2 OF THE CORNERS CALLED FOR IN THE SURVEY INFORMATION (OR ADJACENT OR NEARBY ANNEXATIONS) AND MAY OR MAY NOT BE NOTED IN THE SURVEYORS CERTIFICATION AND THEN A ROTATION APPLIED.

A CERTAIN TRACT OR PARCEL OF LAND IN CORBIN, KY. BEGINNING AT A POINT IN THE NORTH R-O-W OF KY. HWY. 1629, ALSO A COMMON CORNER TO ANNEXATION ORDINANCE NUMBER 1-2003, AND ALSO ANNEXATION ORDINANCE NUMBER 4-98, THENCE LEAVING SAID HIGHWAY AND SAID ANNEXATION ORDINANCE NUMBER 1-2003 AND RUNNING WITH THE LINES OF SAID ANNEXATION ORDINANCE NUMBER 4-98: N41°31'26"W 22.81 FEET TO A POINT, N00°44'16"E 175.36 FEET TO A POINT, THENCE LEAVING SAID ANNEXATION ORDINANCE NUMBER 4-98, AND RUNNING S89°15'44"E 82.46 FEET TO A POINT (N:1873888.207 E: 2129676.713) S06°44'55"E 185.37 FEET TO A POINT, S19°04'08"W 33.36 FEET TO A POINT IN THE NORTH R-O-W OF SAID KY. HWY. 1-2003 AND A CORNER COMMON TO ANNEXATION ORDINANCE NUMBER 1-2003, THENCE WITH SAID R-O-W AND SAID ANNEXATION ORDINANCE NUMBER 1-2003: N73°13'48"W 84.05 FEET TO THE BEGINNING AND CONTAINING 0.44 ACRES BY CALCULATION. THE BOUNDARY OF ANNEXATION ORDINANCE 8-2008 FOR THE CITY OF CORBIN, KY. DESCRIBED HEREON IS BASED UPON THE FOLLOWING INFORMATION. THE DESCRIPTION TAKEN FROM THE PREVIOUSLY SUBMITTED ORDINANCE AND ANY OR ALL ADJOINING ANNEXATION ORDINANCE DESCRIPTIONS, THEN ROTATED TO STATE PLANE COORDINATES, AND ANY OVERLAPS IN PREVIOUS OR ADJOINING ORDINANCES WILL ADJUSTED TO MAKE EACH PARCEL MATCH TO ANY ADJACENT CITY LIMIT BOUNDARIES OR NEWLY SUBMITTED ANNEXATION ORDINANCES. THE PURPOSE OF THE BOUNDARY DESCRIBED HEREON IS TO DELINIATE THE LIMITS OF THE AFORESAID ANNEXATION. IT DOES NOT IN ANY WAY REFLECT A DETERMINATION OF THE INDIVIDUAL PARCEL BOUNDARIES AND SHOULD NOT BE USED FOR THAT PURPOSE.

James D. Blanton PLS # 3409



2/5/09

○ POINT (NOTHING SET)

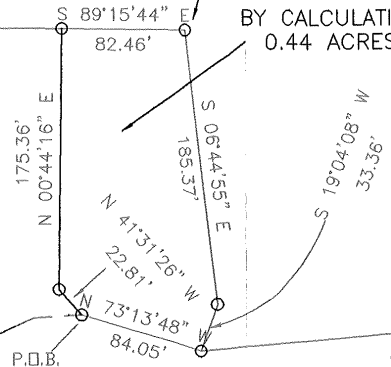
U.S. HWY. 25 E

ANNEX. ORD.
4-98

ANNEXATION ORDINANCE 1-2003

N1873888.207
E:2129676.713

BY CALCULATION
0.44 ACRES



THE BEARINGS AND DISTANCES SHOWN HEREON HAVE BEEN ROTATED FROM THE ORIGINAL SUBMITTAL TO GET THE PARCEL ON STATE PLANE COORDINATES, AND ANY ERROR IN CLOSURE HAS BEEN FORCE CLOSED. ANY OVERLAPS IN PREVIOUS ANNEXATIONS WILL ALSO BE ADJUSTED TO MAKE EACH PARCEL MATCH TO ANY ADJACENT CITY BOUNDARIES OR NEWLY SUBMITTED ANNEXATIONS.

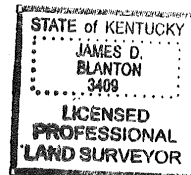
THE ONLY FIELD SURVEYING PERFORMED ON THIS PROJECT WAS GPS CONTROL POINTS WERE SET AND GROUND SURVEYING TO EACH PARCEL AND THE LOCATION OF AT LEAST 2 OF THE CORNERS CALLED FOR IN THE SURVEY INFORMATION OR NEARBY OR ADJOINING ORDINANCES AND MAY OR MAY NOT BE NOTED IN THE SURVEYORS CERTIFICATION AND THEN A ROTATION APPLIED.

SURVEYORS CERTIFICATE

THE BOUNDARY OF ANNEXATION ORDINANCE NUMBER 8--2008 FOR THE CITY OF CORBIN, KY SHOWN ON THIS PLAT IS BASED UPON THE FOLLOWING INFORMATION.

THE DESCRIPTION OF THE PREVIOUSLY SUBMITTED ANNEXATION ORDINANCE NUMBER 4-98, AND DESCRIPTION OF THE PREVIOUSLY SUBMITTED ANNEXATION NUMBER 8--2008.

THE PURPOSE OF THE BOUNDARY SHOWN HEREON IS TO DELINEATE THE LIMITS OF THE AFORESAID ANNEXATION. IT DOES NOT IN ANY WAY REFLECT A DETERMINATION OF THE INDIV PARCEL BOUNDARIES AND SHOULD NOT BE USED FOR THAT PURPOSE.



[Signature] 2/5/09
 JAMES D. BLANTON KY. PLS # 3409 DATE

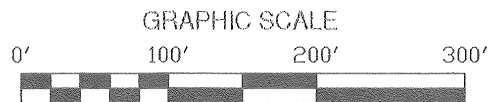
APPROVED BY: JDB

DWG. DATE: FEBRUARY 03, 2009

DWG. PLT

DRAWN BY: JDB

JOB NO.: CORBIN CITY ORD
8-2008.DWG



SCALE: 1 INCH = 100 FEET

ANNEXATION ORDINANCE NO.
8 - 2008

BLANTON LAND SURVEYING
Professional Land Surveyors



2121 S. MAIN STREET
CORBIN, KY. 40701
Phone (606) 523-5164
Phone (606) 864-8460
Fax (606) 523-8212

PREPARED BY
CITY OF CORBIN