

WILLIAMSON, SIMPSON & THEISS

ATTORNEYS AT LAW
101 W. MAIN STREET
LaGRANGE, KY 40031
TEL. 502-222-9421
FAX 502-222-1419

JAMES F. WILLIAMSON
RAYMOND SIMPSON
JAMES L. THEISS

April 28, 2006

RECEIVED AND FILED
DATE May 1, 2006

Ms. Kandie Adkinson, Administrative Supervisor
Land Office Division, Kentucky Secretary of State
Suite 152, State Capitol
700 Capital Avenue
Frankfort, KY 40601

TREY GRAYSON
SECRETARY OF STATE
COMMONWEALTH OF KENTUCKY
BY Kandie Adkinson

Re: City of Crestwood/City of Park Lane

Dear Ms. Adkinson:

I am again forwarding information relative to the City of Crestwood annexation of the City of Park Lake. You will find enclosed herewith the following:

1. City of Park Lake Ordinance No. 3, Series 2005, which has been duly certified.
2. City of Crestwood Ordinance No. 12, Series 2005, which has been attested by the Clerk.
3. The Certification of the Clerk of the City of Park Lake regarding those Ordinances and his certification that final action was taken on this matter by publication of the City of Park Lake Ordinance on December 22, 2005.
4. A Plat signed by a Registered Land Surveyor of the territory annexed which is the former City of Park Lake.
5. A metes and bounds description of the territory annexed by the City of Crestwood which comprises 67.58 acres.

I would ask that you review the enclosed and letting me know whether same is in order at your earliest convenience.

Sincerely,

WILLIAMSON, SIMPSON & THEISS

BY:

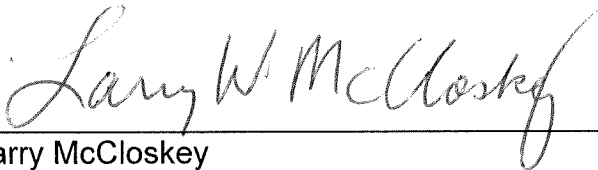
James F. Williamson

JFW/khw
Enclosures

TO WHOM IT MAY CONCERN

The undersigned was the duly appointed and acting City Clerk for the City of Park Lake which has been annexed into the City of Crestwood, Oldham County, Kentucky. You will find enclosed Ordinance No. 3, Series 2005 for the City of Park Lake and Ordinance No. 12, Series 2005 for the City of Crestwood. Final action was taken on this matter with the publication of the City of Park Lake Ordinance on December 22, 2005. At that time, the City of Park Lake was officially dissolved and became a part of the City of Crestwood, Kentucky.

If I can provide you with any additional information or documentation, kindly advise.


Larry McCloskey

CITY OF CRESTWOOD
ORDINANCE NO. 12, SERIES 2005

RECEIVED
FEB - 9 2006
VOTER REGISTRATION
OLDHAM COUNTY CLERK

SUBJECT: AN ORDINANCE AUTHORIZING THE ANNEXATION OF THE CITY OF PARK LAKE, A CITY OF THE SIXTH CLASS, BY THE CITY OF CRESTWOOD, A CITY OF THE FIFTH CLASS.

WHEREAS, pursuant to KRS 81A.530, the City Commission of the City of Crestwood, Oldham County and the City Council of the City of Park Lake have determined that it is in the best interest of the residents of both cities that an Ordinance be adopted to allow the annexation of the City of Park Lake by its adjoining city, the City of Crestwood, all in accordance with KRS 81A.530.

NOW THEREFORE, be it ordained by the City of Crestwood, a municipal corporation of the fifth population class:

SECTION I - ANNEXATION

The City of Crestwood, in accordance with the provision of KRS 81A.530 has found that the City of Park Lake, a city of the sixth population class, which adjoins the boundaries of the City of Crestwood should be annexed into the City of Crestwood and become a part of the City of Crestwood, Oldham County, Kentucky, after all the provisions of KRS 81A.530 including the provisions of KRS 81A.530(3) and (4) have been complied with. The City Commission of the City of Crestwood and the City of Park Lake having found that the City of Park Lake can be better served by the City of Crestwood by its annexation into the boundaries of the City of Crestwood and its dissolution as a municipal corporation.

SECTION II - FINANCIAL

At the time the annexation of the two cities has been completed, all funds of the City of Park Lake shall become the sole property of the City of Crestwood for the use and benefit of the residents of the City of Crestwood with the exception of \$100,000.00, which shall be paid to the Homeowners Association of Park Lake Estates and Camden Manor in accordance with the agreement entered into by and between the City of Park Lake and the Homeowners Association of Park Lake Estates and Camden Manor.

SECTION III - TAXES AND REVENUES

All taxes and revenues received by the City of Park Lake shall become the sole property of the City of Crestwood and the corporate limits of the City of Park Lake at the completion of the annexation shall be placed on the tax rolls of the City of Crestwood for the year 2006 and all years thereafter.

SECTION IV - PLANNING AND ZONING

The City of Crestwood and the City of Park Lake are subject to the Oldham County Planning and Zoning laws, rules and regulations, and after the annexation has been completed the City of Park Lake shall remain subject to the Planning and Zoning laws, rules and regulations of Oldham County, Kentucky.

SECTION V - ORDINANCE EFFECTIVE

This Ordinance shall become effective after its second reading which shall take place no later than one (1) year after the date the last of two (2) identical Ordinances are adopted by the City of Crestwood and the City of Park Lake.

SECTION VI - SEPARATE PROVISIONS OF ORDINANCE

If any provision, section, paragraph, sentence or other provision of this Ordinance which may be declared unconstitutional, invalid, or otherwise unenforceable, such determination shall not impair or affect any other portion of this Ordinance, it being the legislative intent to ordain or enact each part of this Ordinance independently, of all other parts in accordance with the laws of the Commonwealth of Kentucky.

SECTION VII - REPEAL OF PRIOR ORDINANCES

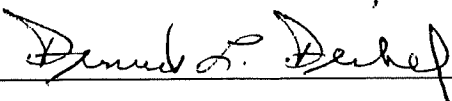
All Ordinances or parts of Ordinances in conflict of this Chapter are hereby repealed.

This Ordinance shall take effect upon its passage and publication.

The first reading of this Ordinance was conducted on the 9th day of November, 2005.

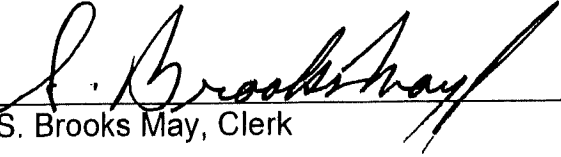
The second reading of this Ordinance having been conducted on the 30th day of November, 2005, at which time the Ordinance was approved.

CITY OF CRESTWOOD



Dennis L. Deibel, Mayor

ATTEST:


S. Brooks May, Clerk

RECEIVED

CITY OF PARK LAKE

FEB - 9 2006

ORDINANCE NO. 3, SERIES 2005

VOTER REGISTRATION
OLDHAM COUNTY CLERK

SUBJECT: AN ORDINANCE AUTHORIZING THE ANNEXATION OF THE CITY OF PARK LAKE, A CITY OF THE SIXTH CLASS, BY THE CITY OF CRESTWOOD, A CITY OF THE FIFTH CLASS

WHEREAS, pursuant to KRS 81A.530, the City Commission of the City of Crestwood, Oldham County and the City Council of the City of Park Lake have determined that it is in the best interest of the residents of both cities that an Ordinance be adopted to allow the annexation of the City of Park Lake by its adjoining city, the City of Crestwood, all in accordance with KRS 81A.530.

NOW, THEREFORE, be it ordained by the City of Park Lake, a municipal corporation of the sixth population class:

SECTION I - ANNEXATION

The City of Crestwood, in accordance with the provisions of KRS 81A.530 has found that the City of Park Lake, a city of the sixth population class, which adjoins the boundaries of the City of Crestwood should be annexed into the City of Crestwood and become a part of the City of Crestwood, Oldham county, Kentucky, after all the provisions of KRS 81A.530 including the provisions of KRS 81A.530(3) and (4) have been complied with. The City Commission of the City of Crestwood and the City Council of the City of Park Lake having found that the entire area of the City of Park Lake can be better served by the City of Crestwood by its annexation into the boundaries of the City of Crestwood and its dissolution as a municipal corporation.

SECTION II - FINANCIAL

At the time the annexation of the two cities has been completed, all funds of the City of Park Lake shall become the sole property of the City of Crestwood for the use and benefit of the residents of the City of Crestwood with the exception of \$100,000.00, which shall be paid to the Homeowners Association of Park Lake Estates and Camden Manor in accordance with the agreement entered into by and between the City of Park Lake and the Homeowners Association of Park Lake Estates and Camden Manor.

SECTION III - TAXES AND REVENUES

All taxes and revenues received by the City of Park Lake shall become the sole property of the City of Crestwood and the corporate limits of the City of Park Lake at the completion of the annexation shall be placed on the tax rolls of the City of Crestwood for the year 2006 and all years thereafter.

SECTION IV - PLANNING AND ZONING

The City of Crestwood and the City of Park Lake are subject to the Oldham County Planning and Zoning laws, rules and regulations, and after the annexation has been completed the City of Park Lake shall remain subject to the Planning and Zoning laws, rule and regulations of Oldham County, Kentucky.

SECTION V - ORDINANCE EFFECTIVE

This Ordinance shall become effective after its second reading and upon publication which shall take place no later than one (1) year after the date of the last of two (2) identical Ordinances are adopted by the City of Crestwood and the City of Park Lake.

SECTION VI - SEPARATE PROVISIONS OF ORDINANCE

If any provision, section, paragraph, sentence or other provision of this Ordinance which may be declared unconstitutional, invalid, or otherwise unenforceable, such determination shall not impair or affect any other portion of this Ordinance independently, of all other parts in accordance with the laws of the Commonwealth of Kentucky.

SECTION VII - REPEAL OF PRIOR ORDINANCES

All Ordinances or parts of Ordinances in conflict of this Chapter are hereby repealed.

This Ordinance shall take effect upon its passing and publication.

The first reading of this Ordinance was conducted on the 8TH day of SEPTEMBER, 2005.

The second reading of this Ordinance was conducted on the 10 day of NOV., 2005, at which time the Ordinance was approved.

CITY OF PARK LAKE



JIM KRAMER, MAYOR

ATTEST:

CERTIFICATION

CLERK

I hereby certify that this is a true copy of Ordinance No. 3, Series 2005, adopted by the City of Park Lake at its second reading held on November 10th, 2005.


Jim Kramer, Mayor
City of Park Lake

ANNEXATION DESCRIPTION

CITY OF CRESTWOOD – OLDHAM COUNTY, KENTUCKY (67.58 Acres)

BEGINNING at a point at a corner with the existing corporate limits of the City of Crestwood, Oldham County, Kentucky, said point being in the west right-of-way line of Kentucky Highway 146 and having the coordinate values of 310,017.21 North / 1,291,012.54 East on the Kentucky State Plane Coordinate System (North Zone, NAD 83); thence with said corporate limits the following courses and distances:

South 70 degrees 18 minutes 55 seconds West 2,491.36 feet;
North 20 degrees 31 minutes 47 seconds West 1,001.36 feet;
North 02 degrees 12 minutes 24 seconds West 27.66 feet;
North 49 degrees 23 minutes 34 seconds East 157.87 feet;
North 50 degrees 52 minutes 39 seconds East 1,748.32 feet;
South 73 degrees 09 minutes 37 seconds East 443.56 feet; and
South 06 degrees 17 minutes 42 seconds East 533.73 feet to the southwest corner of the

land of Robert A. Jones; thence with new lines for the corporate limits of the City of Crestwood the following courses and distances:

South 06 degrees 17 minutes 42 seconds East 346.93 feet;
South 05 degrees 49 minutes 43 seconds East 221.54 feet; and
North 70 degrees 19 minutes 03 seconds East 590.18 feet to a point in a curve in the west


right-of-way line of Kentucky Highway 146; thence with said right of way and with a curve to the left having a central angle of 08 degrees 49 minutes 08 seconds and a radius of 823.38 feet, the chord of which is South 19 degrees 01 minutes 04 seconds East 126.61 feet to a point of tangency; thence South 23 degrees 29 minutes 28 seconds East 203.84 feet to the beginning, containing 67.585 acres as shown on the Annexation Plat dated April 24, 2006, and being all of the former City of Park Lake.

Description Prepared By

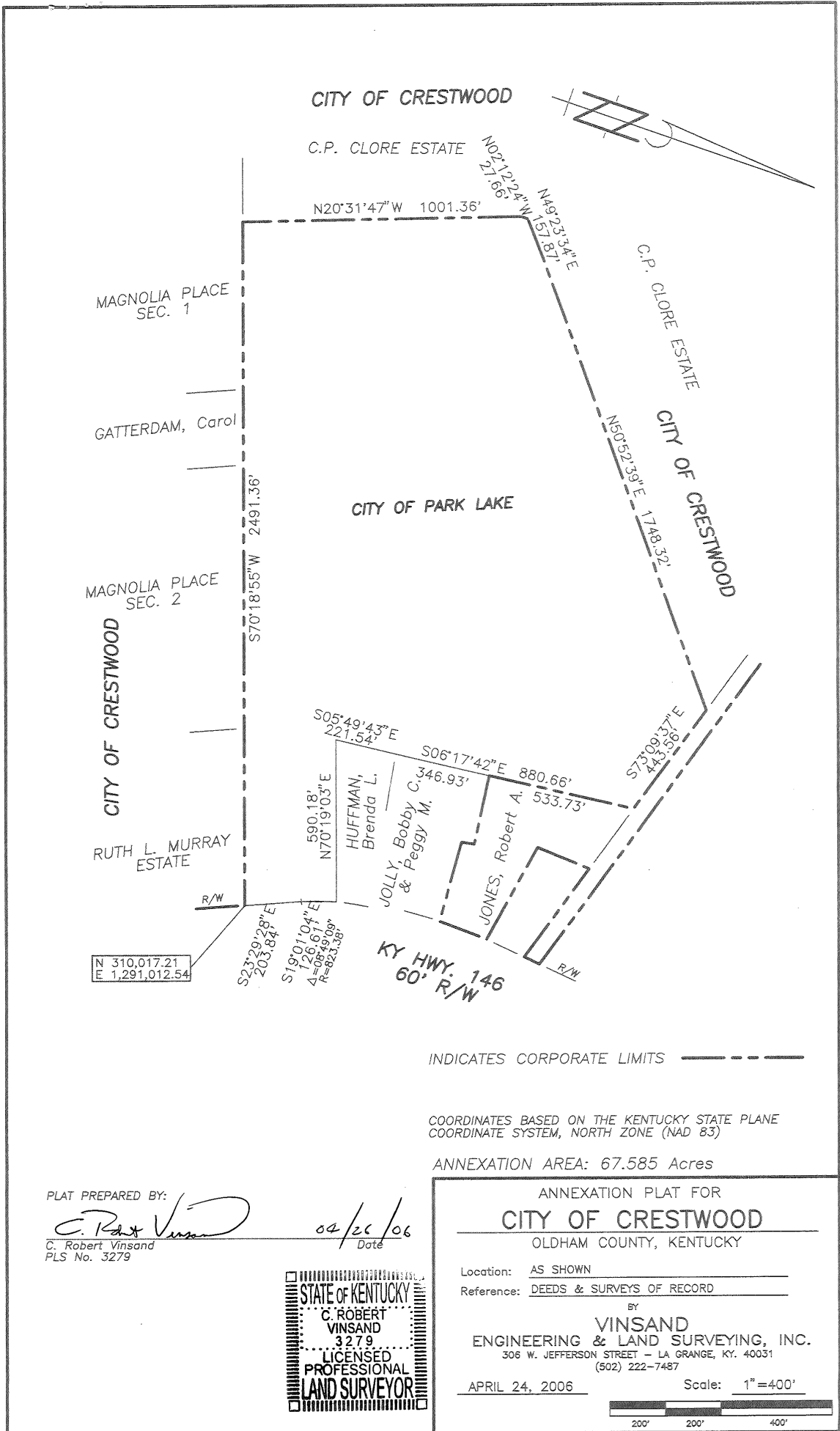


C. Robert Vinsand

Professional Land Surveyor


Date





CITY OF CRESTWOOD

C.P. CLORE ESTATE

MAGNOLIA PLACE SEC. 1

GATTERDAM, Carol

MAGNOLIA PLACE SEC. 2

CITY OF CRESTWOOD

RUTH L. MURRAY ESTATE

CITY OF PARK LAKE

HUFFMAN, Brenda L.

JOLLY, Bobby C. & Peggy M.

JONES, Robert A.

KY HWY. 146
60' R/W

N 310,017.21
E 1,291,012.54

INDICATES CORPORATE LIMITS -----

COORDINATES BASED ON THE KENTUCKY STATE PLANE COORDINATE SYSTEM, NORTH ZONE (NAD 83)

ANNEXATION AREA: 67.585 Acres

PLAT PREPARED BY:

C. Robert Vinsand
C. Robert Vinsand
PLS No. 3279

04/26/06
Date

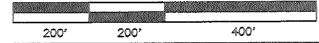
STATE OF KENTUCKY
C. ROBERT VINSAND
3279
LICENSED PROFESSIONAL LAND SURVEYOR

ANNEXATION PLAT FOR
CITY OF CRESTWOOD
OLDHAM COUNTY, KENTUCKY

Location: AS SHOWN
Reference: DEEDS & SURVEYS OF RECORD
BY
VINSAND
ENGINEERING & LAND SURVEYING, INC.
306 W. JEFFERSON STREET - LA GRANGE, KY. 40031
(502) 222-7487

APRIL 24, 2006

Scale: 1" = 400'



06903