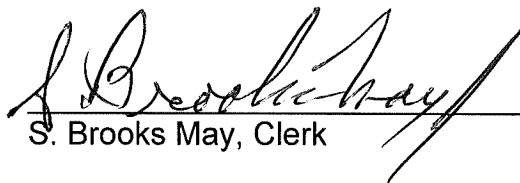


**CITY CLERK CERTIFICATION**

I, the undersigned, being duly appointed, qualified and acting City Clerk of the City of Crestwood, Oldham County, Kentucky, states that the foregoing 5 pages of Ordinance No. 2, Series 1989, is a true, correct and complete copy, and was duly adopted and lawfully passed by the Crestwood City Commission at a duly convened business meeting of the Crestwood City Commission held on the 28<sup>TH</sup> day of JUNE, 1989, all as it appears in the official records of said City.

WITNESS my hand, as the Clerk of the City of Crestwood, Oldham County, Kentucky this 28<sup>TH</sup> day of JANUARY, 2008.

  
S. Brooks May, Clerk

RECEIVED AND FILED  
DATE January 29, 2008  
TREY GRAYSON  
SECRETARY OF STATE  
COMMONWEALTH OF KENTUCKY  
BY Kandie Adkinson

COMMONWEALTH OF KENTUCKY

CITY OF CRESTWOOD

ORDINANCE NO. 2, SERIES 1989


\* \* \* \* \*

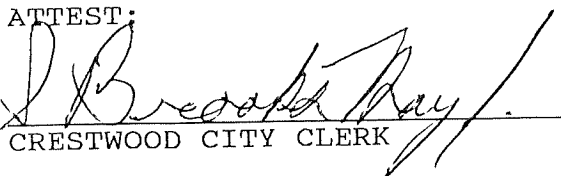
SUBJECT: AN ORDINANCE ANNEXING TO THE CITY OF CRESTWOOD, KENTUCKY, A CERTAIN TRACT OF LAND IN THE COUNTY OF OLDHAM, ADJACENT TO THE PRESENT BOUNDARY LINE OF THE CITY OF CRESTWOOD, KENTUCKY, MORE PARTICULARLY HEREINAFTER DESCRIBED.

FIRST READING 6/15/89  
SECOND READING 6/28/89  
ADOPTED 6/28/89

\* \* \* \* \*

ADOPTED by the Board of City Commissioners of the City of Crestwood, Kentucky at a special meeting on the 28<sup>TH</sup> day of JUNE, 1989, and on the same occasion signed in open session by the Mayor of the City of Crestwood as evidence of his approval, attested under seal by the Crestwood City Clerk and declared to be in full force and effect.

  
DENNIS L. DEIBEL  
MAYOR

ATTEST:  
  
CRESTWOOD CITY CLERK

COMMONWEALTH OF KENTUCKY

CITY OF CRESTWOOD

ORDINANCE NO. 2, SERIES 1989

\* \* \* \* \*

SUBJECT: AN ORDINANCE ANNEXING TO THE CITY OF CRESTWOOD, KENTUCKY, A CERTAIN TRACT OF LAND IN THE COUNTY OF OLDHAM, ADJACENT TO THE PRESENT BOUNDARY LINE OF THE CITY OF CRESTWOOD, KENTUCKY, MORE PARTICULARLY HEREINAFTER DESCRIBED.

WHEREAS, by Ordinance No. 1, Series 1989, heretofore duly passed and approved by the Board of City Commissioners of the City of Crestwood on the 15<sup>TH</sup> day of JUNE, 1989, the City of Crestwood proposed to annex to the City of Crestwood the tract of land hereinafter more particularly described, and

WHEREAS, it appears that there is no daily or weekly newspaper published in the City of Crestwood, and

WHEREAS, each of the owners of record of the real property proposed to be annexed has consented in writing to the annexation as set out at KRS 81A.412.

NOW, THEREFORE, BE IT ORDAINED by the Board of City Commissioners of the City of Crestwood, Kentucky as follows:

Section One. There is hereby annexed to the City of Crestwood and the boundary line of the City of Crestwood is hereby extended so as to include within the boundaries of the city of Crestwood, that certain tract of land in the County of Oldham, State of Kentucky, adjacent to and contiguous with the boundary line of the city of Crestwood and which is more particularly described as follows:

BEGINNING at a corner of the present City of Crestwood incorporated area at the northwest corner of the land of the Oldham County Board of Education and being the northeast corner of Shelburn Oaks subdivision; thence with the northwest lines of Shelburn Oaks, South 65 degrees 45 minutes 21 seconds West 505.48 feet; South 54 degrees 59 minutes 16 seconds West 1,264.34 feet; and South 76 degrees 29 minutes 46 seconds West 355.03 feet to a point in the northeast right-of-way line of Kentucky Highway 329; thence with said right-of-way line the following courses and distances:

North 21 degrees 42 minutes 12 seconds West 166.60 feet to a point of curvature;  
with a curve to the left having a central angle of 24 degrees 01 minute 00 seconds and a radius of 2,576.479 feet, the chord of which is North 33 degrees 42 minutes 42 seconds West 1,072.09 feet, to a point of tangency;  
North 45 degrees 43 minutes 12 seconds West 1,817.83 feet to a point of curvature;  
with a curve to the right having a central angle of 22 degrees 58 minutes 36 seconds and a radius of 2,412.500 feet, the chord of which is North 34 degrees 13 minutes 54 seconds West 960.99 feet to a point of tangency; and  
North 22 degrees 33 minutes 53 seconds West 657.86 feet to a point; thence crossing Kentucky Highway 329, South 66 degrees 43 minutes 01 second West 80.00 feet to a point in the southwest right-of-way line; thence with said southwest right-of-way line, North 25 degrees 01 minute 52 seconds West 119.84 feet to a point at the southeast corner of the land of Chevron Oil Company; thence with the lines of said Chevron Oil Company, South 78 degrees 52 minutes 27 seconds West 226.88 feet; and North 11 degrees 07 minutes 33 seconds West 396.72 feet to a point in the southerly line of the land of Lee S. Clore and Carla C. Jones; thence with said land of said Clore and Jones, the following courses and distances:

South 78 degrees 52 minutes 27 seconds West 191.23 feet to a point;  
North 11 degrees 58 minutes 26 seconds East 45.37 feet to a point;  
North 22 degrees 22 minutes 00 seconds East 40.62 feet to a point;  
North 35 degrees 59 minutes 34 seconds East 57.09 feet to a point;  
North 41 degrees 49 minutes 28 seconds East 64.88 feet to a point;  
North 37 degrees 10 minutes 46 seconds East 99.69 feet to a point;  
North 59 degrees 32 minutes 11 seconds East 105.62 feet to a point; and  
North 59 degrees 53 minutes 39 seconds East 109.19 feet to a point in a curve in the west right-of-way line of Kentucky Highway 329; thence crossing Kentucky Highway 329, North 48 degrees 36 minutes 02 seconds East 319.41 feet to a point that is 100.00 feet right of centerline Station 6+00 of Ramp 3 as shown on Sheet 69 of the aforementioned right-of-way plans; thence with the southeast right-of-way line of I-71, the following courses and distances:

North 50 degrees 28 minutes 25 seconds East 900.00 feet to a point;

North 68 degrees 54 minutes 31 seconds East 79.06  
feet to a point;  
North 50 degrees 28 minutes 25 seconds East 225.00  
feet to a point;  
North 41 degrees 57 minutes 34 seconds East 404.48  
feet to a point;  
North 50 degrees 28 minutes 25 seconds East 150.37  
feet to a point;  
North 53 degrees 13 minutes 13 seconds East 268.32  
feet to a point;  
North 55 degrees 58 minutes 00 seconds East 555.32  
feet to a point;  
North 63 degrees 55 minutes 21 seconds East 200.97  
feet to a point;  
North 57 degrees 06 minutes 45 seconds East 1,300.00  
feet to a point;  
North 62 degrees 49 minutes 23 seconds East 201.00  
feet to a point;  
North 57 degrees 06 minutes 45 seconds East 100.00  
feet to a point; and  
North 49 degrees 59 minutes 15 seconds East 319.26

feet to a point at the northeast corner of the Carl P. Clore, Jr., Estate; thence with the lines of said estate, the following courses and distances:

South 42 degrees 26 minutes 39 seconds East 762.60  
feet to a point;  
South 40 degrees 32 minutes 18 seconds East 1,521.06  
feet to a point;

South 72 degrees 27 minutes 20 seconds East 1,056.42  
feet to a point in the west right-of-way line  
of Kentucky Highway 146;

thence with said line of Kentucky Highway 146, South 07 degrees 09 minutes 38 seconds West 60.74 feet to a point; thence continuing with the lines of said Clore Estate, the following courses and distances:

North 72 degrees 58 minutes 28 seconds West 1,114.91  
feet to a point;  
South 50 degrees 58 minutes 22 seconds West 1,759.03  
feet to a point;  
South 48 degrees 35 minutes 04 seconds West 147.48  
feet to a point, said point being at the northwest  
corner of Park Lake Estates;  
South 02 degrees 16 minutes 10 seconds East 27.68  
feet to a point;  
South 20 degrees 33 minutes 48 seconds East 161.36  
feet to a point;  
South 69 degrees 26 minutes 12 seconds West 50.00  
feet to a point;  
South 20 degrees 33 minutes 48 seconds East 245.00  
feet to a point;

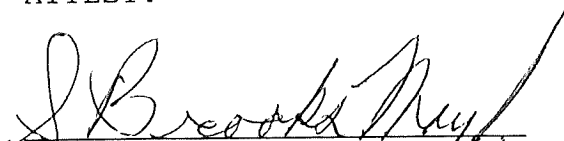
North 69 degrees 26 minutes 12 seconds East 50.00 feet to a point;  
South 20 degrees 33 minutes 48 seconds East 595.79 feet to a point, said point being the southwest corner of Park Lake Estates; and  
South 20 degrees 28 minutes 10 seconds East 439.44 feet to a corner with the land of James W. Decker and Martha M. Decker (Verl C. Decker Estate); thence with a northwest line of said Decker, North 70 degrees 16 minutes 43 seconds East 883.09 feet to the northeast corner of said Decker; thence with the easterly lines of Decker, South 08 degrees 41 minutes 42 seconds East 362.48 feet; South 11 degrees 35 minutes 14 seconds East 187.86 feet to a point; and South 18 degrees 27 minutes 16 seconds East 139.00 feet to a point at a corner with the incorporated area of the City of Crestwood; thence with the lines of said incorporated area, South 20 degrees 48 minutes 28 seconds East 84.92 feet to a point; South 20 degrees 41 minutes 02 seconds East 140.04 feet to a point; South 20 degrees 43 minutes 16 seconds East 1,125.38 feet to a corner with the Decker estate property in the northwest line of the Oldham County Board of Education property; and continuing with the incorporated area, South 68 degrees 21 minutes 13 seconds West 1,159.85 feet to the beginning, containing 560.374 acres.

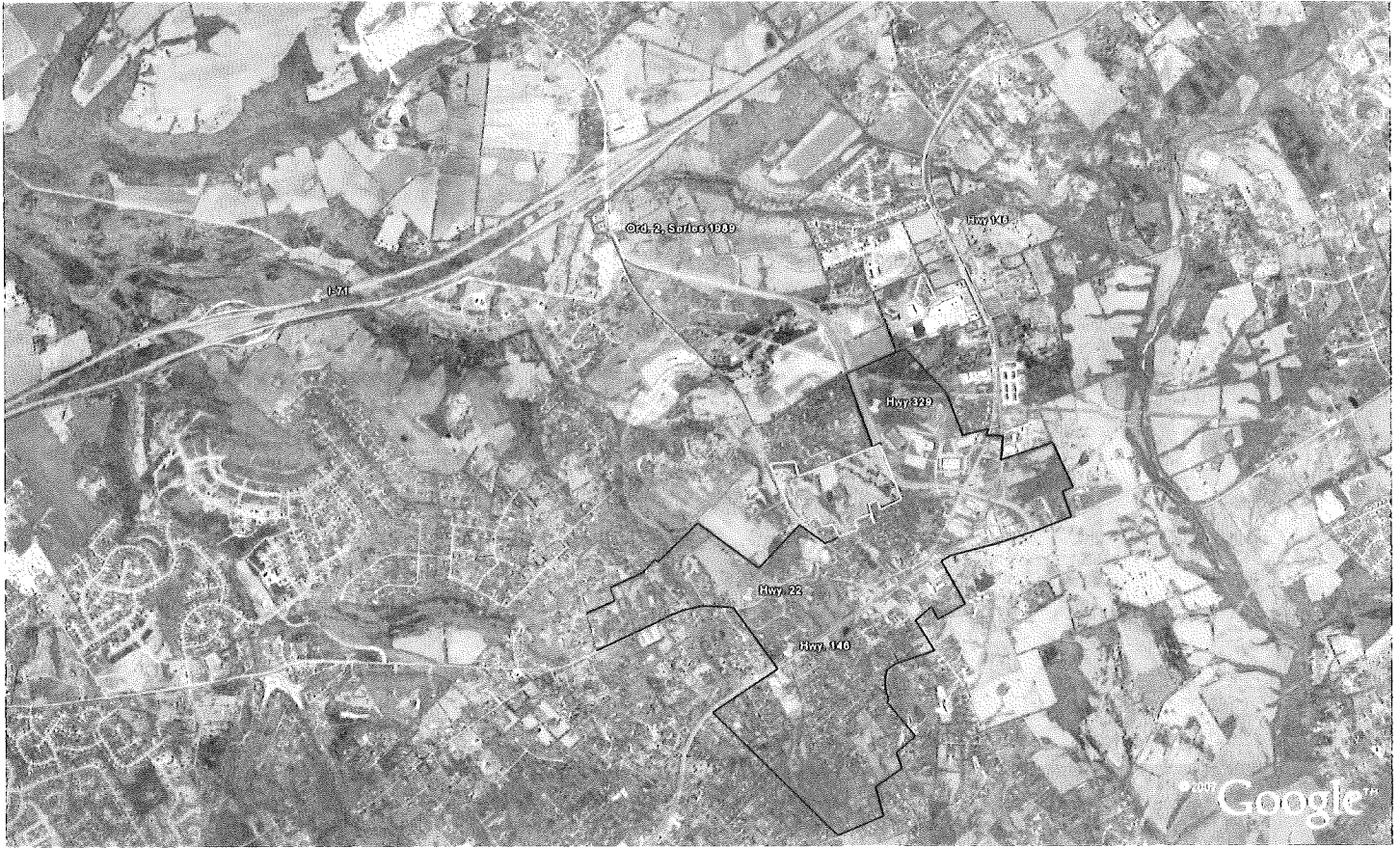
Section Two. This ordinance shall take effect upon its passage and approval.

PASSED AND ADOPTED this 28<sup>TH</sup> day of JUNE, 1989.

  
\_\_\_\_\_  
DENNIS L. DEIBEL  
MAYOR

ATTEST:

  
\_\_\_\_\_  
CRESTWOOD CITY CLERK



**CITY OF CRESTWOOD – OLDHAM COUNTY**  
**ORDINANCE 2, SERIES 1989**

OVERSIZE MAP INCLUDED WITH  
SUBMISSION.

To research the map, contact the  
Office of Secretary of State  
or the County Clerk.