

CITY CLERK CERTIFICATION

I, the undersigned, being duly appointed, qualified and acting City Clerk of the City of Crestwood, Oldham County, Kentucky, states that the foregoing 6 pages of Ordinance No. 5, Series 1990, is a true, correct and complete copy, and was duly adopted and lawfully passed by the Crestwood City Commission at a duly convened business meeting of the Crestwood City Commission held on the 11TH day of July, 1990, all as it appears in the official records of said City.

WITNESS my hand, as the Clerk of the City of Crestwood, Oldham County, Kentucky this 28TH day of JANUARY, 2008.


S. Brooks May, Clerk

RECEIVED AND FILED
DATE January 29, 2008

TREY GRAYSON
SECRETARY OF STATE
COMMONWEALTH OF KENTUCKY
BY Randie Adkinson

COMMONWEALTH OF KENTUCKY

CITY OF CRESTWOOD

ORDINANCE NO. 5, SERIES 1990

* * * * *

SUBJECT: AN ORDINANCE ANNEXING TO THE CITY OF CRESTWOOD, KENTUCKY, A CERTAIN TRACT OF LAND IN THE COUNTY OF OLDHAM, ADJACENT TO THE PRESENT BOUNDARY LINE OF THE CITY OF CRESTWOOD, KENTUCKY, MORE PARTICULARLY HEREINAFTER DESCRIBED.

FIRST READING: 7/5/90
SECOND READING: 7/11/90
ADOPTED: 7/11/90

* * * * *

ADOPTED by the Board of City Commissioners of the City of Crestwood, Kentucky at a regular meeting on the 11TH day of JULY, 1990, and on the same occasion signed by the Mayor of the City of Crestwood as evidence of his approval, attested under seal by the Crestwood City Clerk and declared to be in full force and effect.

Dennis L. Deibel
DENNIS L. DEIBEL
MAYOR

ATTEST:
S. Brooks May
CRESTWOOD CITY CLERK

COMMONWEALTH OF KENTUCKY

CITY OF CRESTWOOD

ORDINANCE NO. 5, SERIES 1990

* * * * *

SUBJECT: AN ORDINANCE ANNEXING TO THE CITY OF CRESTWOOD, KENTUCKY, A CERTAIN TRACT OF LAND IN THE COUNTY OF OLDHAM, ADJACENT TO THE PRESENT BOUNDARY LINE OF THE CITY OF CRESTWOOD, KENTUCKY, MORE PARTICULARLY HEREINAFTER DESCRIBED.

WHEREAS, by Ordinance No. 1, Series 1990, heretofore duly passed and approved by the Board of City Commissioners of the City of Crestwood on the 11TH day of APRIL, 1990, the City of Crestwood proposed to annex to the City of Crestwood the tract of land hereinafter more particularly described, and

WHEREAS, it appears that there is no daily or weekly newspaper published in the City of Crestwood, and

WHEREAS, copies of said Ordinance No. 1, Series, 1990, have been published according to law, and

WHEREAS, more than sixty (60) days have passed since the enactment and approval of said Ordinance No. 1, Series, 1990, and no petition in opposition has been filed with the mayor of the City of Crestwood pursuant to the provisions of KRS 81A.420(2) and no other protest or remonstrance has been made against said Ordinance No. 1, Series 1990.

NOW, THEREFORE, BE IT ORDAINED by the Board of City Commissioners of the City of Crestwood, Kentucky as follows:

SECTION ONE

There is hereby annexed to the City of Crestwood and the boundary line of the City of Crestwood is hereby extended so as to include within the boundaries of the City of Crestwood, that certain tract of land in the County of Oldham, State of Kentucky, adjacent to and contiguous with the boundary line of the City of Crestwood and which is more particularly described as follows:

BEGINNING at a point in the westerly right-of-way line of Kentucky Highway 329 where the present incorporated area crosses said highway approximately 1,000 feet southwest of its intersection with the southeast right-of-way line of Interstate Highway I-71; thence leaving the present incorporated area and continuing with said line of Kentucky Highway 329, South 21 degrees 11 minutes 44 seconds East 76.02 feet to a point; South 22 degrees 44 minutes 36 seconds East 581.29 feet to a point of curvature; and with a curve to the left having a central angle of 15 degrees 18 minutes 29 seconds and a radius of 2,472.50 feet, the chord of which is South 30 degrees 23 minutes 50 seconds East 658.63 feet, to the southeast corner of the land of Hiram C. Taylor and Peggy E. Taylor; thence leaving said line of Kentucky Highway 329 and with the southeasterly line of said Taylor, South 54 degrees 30 minutes 13 seconds West 416.28 feet to the southwesterly corner of said Taylor; thence with Taylor's southwesterly line and continuing, North 40 degrees 29 minutes 04 seconds West 299.80 feet to a point; thence the following courses and distances:

South 47 degrees 39 minutes 24 seconds West 360.59 feet to a point;

South 31 degrees 03 minutes 02 seconds East 195.39 feet to a point;

South 28 degrees 03 minutes 59 seconds East 8.30 feet to a point;

South 42 degrees 51 minutes 44 seconds East 23.92 feet to a point;

South 42 degrees 12 minutes 04 seconds East 436.99 feet to a point; and

South 48 degrees 14 minutes 05 seconds West 1524.28 feet to the southeast corner of the land of Jack

A. Clore and Susan Clore; thence with the northeasterly lines of said Clore property, North 39 degrees 45 minutes 54 seconds West 350.00 feet to a point; and North 29 degrees 15 minutes 54 seconds West 387.00 feet to a point; thence the following courses and distances:

North 54 degrees 46 minutes 54 seconds West 135.00 feet to a point;

North 28 degrees 31 minutes 54 seconds West 567.00 feet to a point;

South 67 degrees 28 minutes 06 seconds West 500.00 feet to a point;

South 81 degrees 13 minutes 06 seconds West 632.00 feet to a point;

North 63 degrees 01 minutes 54 seconds West 1290.00 feet to a point;

North 88 degrees 06 minutes 54 seconds West 350.00 feet to a point; and

North 53 degrees 42 minutes 35 seconds West 436.16 feet to a point in the southeasterly right-of-way

line of Interstate Highway I-71; thence with said line of Interstate Highway I-71, the following courses and distances:

North 51 degrees 41 minutes 11 seconds East 113.97 feet to a point;
North 75 degrees 56 minutes 50 seconds East 406.23 feet to a point;
North 72 degrees 34 minutes 20 seconds East 507.77 feet to a point;
North 68 degrees 49 minutes 22 seconds East 507.77 feet to a point;
North 65 degrees 49 minutes 20 seconds East 303.09 feet to a point;
North 47 degrees 50 minutes 27 seconds East 105.72 feet to a point;
North 62 degrees 49 minutes 20 seconds East 303.51 feet to a point;
North 60 degrees 34 minutes 15 seconds East 303.51 feet to a point;
North 58 degrees 16 minutes 52 seconds East 315.36 feet to a point;
North 57 degrees 06 minutes 45 seconds East 88.66 feet to a point;
North 79 degrees 21 minutes 13 seconds East 154.97 feet to a point;
North 61 degrees 06 minutes 45 seconds East 508.70 feet to a point;
North 49 degrees 48 minutes 26 seconds East 248.40 feet to a point; and

North 61 degrees 43 minutes 25 seconds East 1138.86 feet to a point in the easterly right-of-way line

Kentucky Highway 329; thence crossing Interstate Highway I-71, North 27 degrees 09 minutes 48 seconds West 796.17 feet to a point in the northwest right-of-way line of Interstate Highway I-71; thence with said right-of-way line of Interstate Highway I-71 the following courses and distances:

South 50 degrees 26 minutes 13 seconds West 614.60 feet to a point;
South 54 degrees 55 minutes 18 seconds West 279.12 feet to a point;
South 69 degrees 15 minutes 11 seconds West 87.71 feet to a point;
South 59 degrees 24 minutes 23 seconds West 150.00 feet to a point;
South 54 degrees 02 minutes 34 seconds West 425.56 feet to a point; and

South 60 degrees 33 minutes 08 seconds West 1,119.71 feet to the southwest corner of the proposed for "Crestwood Industrial Park;" thence with the west and northerly lines of said industrial park the following courses and distances:

North 06 degrees 23 minutes 55 seconds East 1810.38 feet to a point;
North 06 degrees 14 minutes 31 seconds East 1022.95 feet to a point;
South 69 degrees 19 minutes 06 seconds East 1400.33 feet to a point; and
North 67 degrees 09 minutes 14 seconds East 725.04 feet to a point in the southwest right-of-way line of Kentucky Highway 329; thence crossing Kentucky Highway 329, North 74 degrees 29 minutes 42 seconds East 135.55 feet to a point in the northeast right-of-way line at the northwest corner of the land of Robert A. Jones (formerly Carden); thence with the northwest and northeast lines of said Jones, North 51 degrees 36 minutes 49 seconds East 1303.02 feet to a point; South 68 degrees 26 minutes 55 seconds East 1441.81 feet to a point; and South 70 degrees 25 minutes 20 seconds East 688.52 feet to a point in the northwest right-of-way line of Interstate Highway I-71; thence with said line of Interstate Highway I-71 the following courses and distances:

South 57 degrees 00 minutes 53 seconds West 304.03 feet to a point;
South 62 degrees 58 minutes 17 seconds West 414.19 feet to a point;
South 59 degrees 11 minutes 13 seconds West 431.68 feet to a point;
South 49 degrees 14 minutes 47 seconds West 101.04 feet to a point;
South 60 degrees 33 minutes 08 seconds West 900.00 feet to a point;
South 61 degrees 16 minutes 41 seconds West 342.76 feet to a point;
South 67 degrees 29 minutes 46 seconds West 284.28 feet to a point; and
South 70 degrees 26 minutes 13 seconds West 196.66 feet to a point; thence crossing Interstate Highway I-71, South 05 degrees 08 minutes 06 seconds West 973.20 feet to a point in the southeast right-of-way line in a northwest line of the incorporated area of the City of Crestwood; thence with the northwesterly and westerly lines of said incorporated area the following courses and distances:

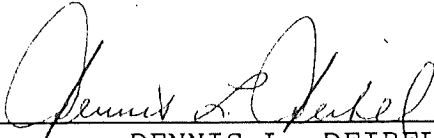
South 48 degrees 36 minutes 02 seconds West, crossing Kentucky Highway 329, 319.41 feet to a point in the westerly right-of-way line of Kentucky Highway 329; thence leaving said line of Kentucky Highway 329,
South 59 degrees 53 minutes 39 seconds West 109.19 feet to a point;
South 59 degrees 32 minutes 11 seconds West 105.62 feet to a point;
South 37 degrees 10 minutes 46 seconds West 99.69 feet to a point;
South 41 degrees 49 minutes 28 seconds West 64.88 feet to a point;

South 35 degrees 59 minutes 34 seconds West 57.09 feet to a point;
South 22 degrees 22 minutes 00 seconds West 40.62 feet to a point;
South 11 degrees 58 minutes 26 seconds West 45.37 feet to a point;
North 78 degrees 52 minutes 27 seconds East 191.23 feet to a point;
South 11 degrees 07 minutes 33 seconds East 396.72 feet to a point;
North 78 degrees 52 minutes 27 seconds East 226.88 feet to a point in the westerly right-of-way line of Kentucky Highway 329; thence with said line of Kentucky Highway 329,
South 25 degrees 01 minutes 52 seconds East 119.84 feet to a point; and
North 66 degrees 43 minutes 01 seconds East 20.00 feet to the beginning, containing 404.014 acres.

SECTION TWO

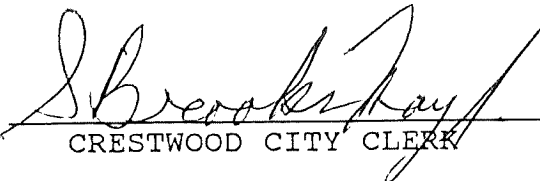
This ordinance shall take effect upon its passage and approval.

PASSED AND ADOPTED this 11TH day of JULY, 1990.



DENNIS L. DEIBEL
MAYOR

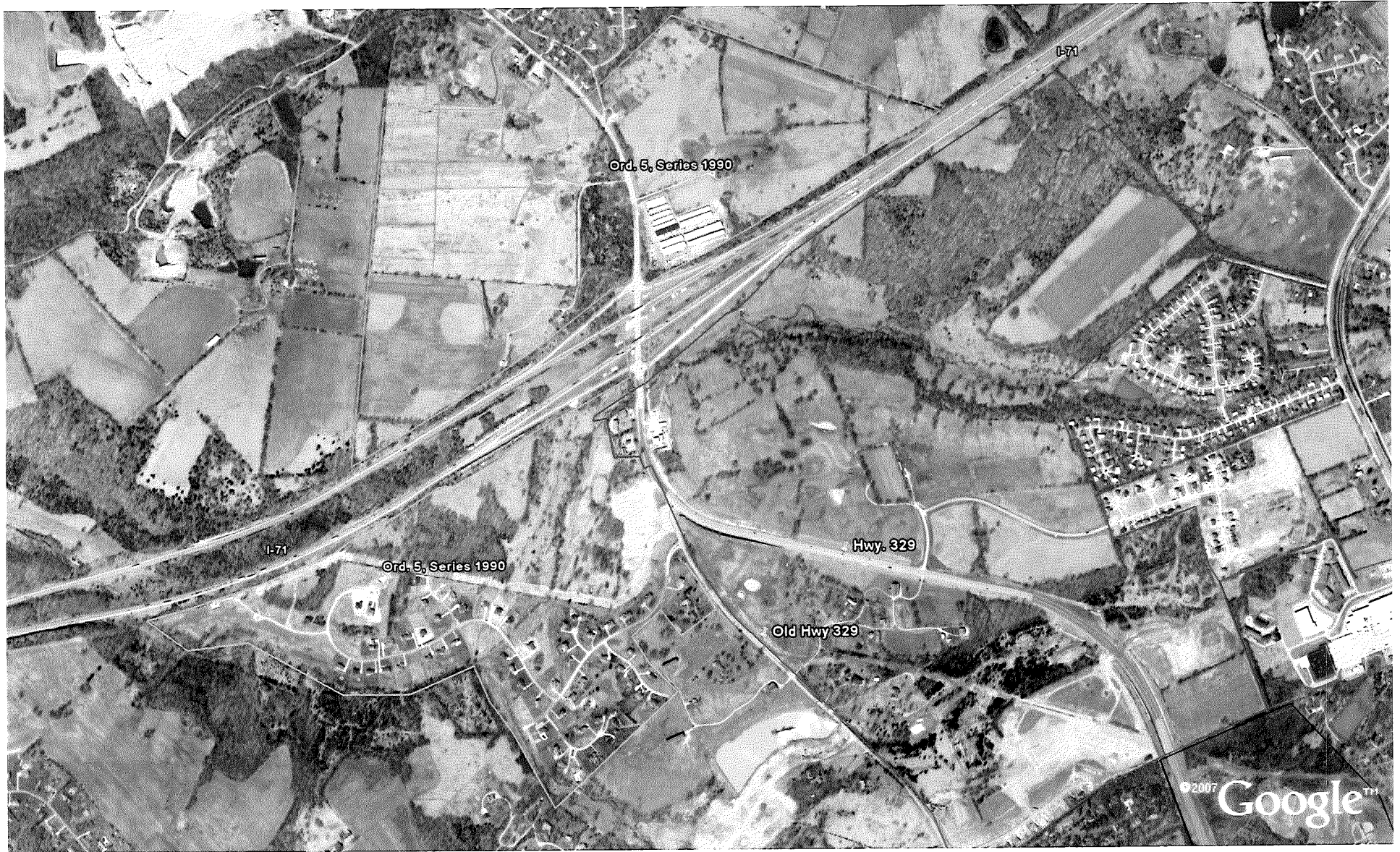
ATTEST:



CRESTWOOD CITY CLERK



CITY OF CRESTWOOD – OLDHAM COUNTY
ORDINANCE 5, SERIES 1990



CITY OF CRESTWOOD – OLDHAM COUNTY
Ordinance 5, Series 1990

OVERSIZE MAP INCLUDED WITH
SUBMISSION.

To research the map, contact the
Office of Secretary of State
or the County Clerk.