

CITY CLERK CERTIFICATION


I, the undersigned, being duly appointed, qualified and acting City Clerk of the City of Crestwood, Oldham County, Kentucky, states that the foregoing 3 pages of Ordinance No. 1, Series 2001, is a true, correct and complete copy, and was duly adopted and lawfully passed by the Crestwood City Commission at a duly convened business meeting of the Crestwood City Commission held on the 14TH day of FEBRUARY, 2001, all as it appears in the official records of said City.

WITNESS my hand, as the Clerk of the City of Crestwood, Oldham County, Kentucky this 28TH day of JANUARY, 2008.



S. Brooks May, Clerk

RECEIVED AND FILED
DATE January 29, 2008

TREY GRAYSON
SECRETARY OF STATE
COMMONWEALTH OF KENTUCKY


COMMONWEALTH OF KENTUCKY
CITY OF CRESTWOOD
ORDINANCE NO. 1, SERIES 2001

SUBJECT: AN ORDINANCE ANNEXING CONTIGUOUS PROPERTY TO THE CITY OF CRESTWOOD, KENTUCKY, BEING A CERTAIN TRACT OF LAND LOCATED IN OLDHAM COUNTY, KENTUCKY, MORE PARTICULARLY HEREINAFTER DESCRIBED.

BE IT ORDAINED BY THE BOARD OF CITY COMMISSIONERS OF THE CITY OF CRESTWOOD, KENTUCKY, THAT:

SECTION ONE: The following territory lying contiguous to the present boundaries of the City of Crestwood, Oldham County, Kentucky shall be annexed into the City of Crestwood, Kentucky in accordance with KRS 81A.410 to 81A.470 and other applicable laws, rules and regulations. Said tract of land is now within the county of Oldham and is adjacent to and contiguous to the present City boundaries and is not located in any other incorporated area and is described as follows:

SEE ATTACHED DESCRIPTION.

SECTION TWO: The Board of Commissioners hereby finds that the annexation criteria set forth in KRS 81A.410 (1) exist and that no part of the territory to be annexed is presently within the boundaries of an incorporated city.


SECTION THREE: The City Commissioners of the City of Crestwood, Kentucky, further find that all property owners of record within the territory proposed to be annexed have either consented to the annexation or filed no objections or remonstrants in the manner prescribed by the Kentucky Revised Statutes within sixty (60) days from the date of the enactment of the Ordinance proposing to annex the hereinabove described territory.

SECTION FOUR: Immediately upon the effective date hereof, the Clerk of the City of Crestwood is hereby authorized and directed to publish this Ordinance in the Oldham Era in the absence of a daily or weekly newspaper published within the boundaries of the City of Crestwood.

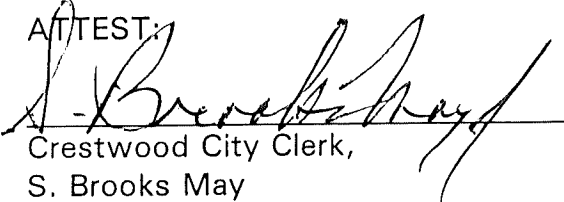
SECTION FIVE: This Ordinance shall take effect immediately upon its passage, approval and publication.

Adopted at its first reading the 10TH day of January, 2001.

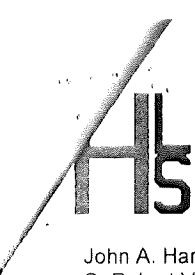
The second reading shall be held on the 14TH day of FEBRUARY, 2001.



Dennis L. Deibel, Mayor

ATTEST:


Crestwood City Clerk,
S. Brooks May



John A. Harrison, PLS
C. Robert Vinsand, PE/PLS

HARRISON LAND SURVEYING, INC.

306 W. Jefferson Street
LaGrange, Kentucky 40031
(502) 222-7487

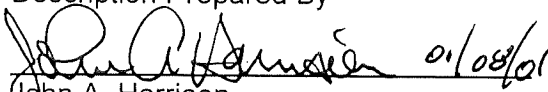
ANNEXATION DESCRIPTION "SUMMERFIELD TRACT" – 14.838 ACRES

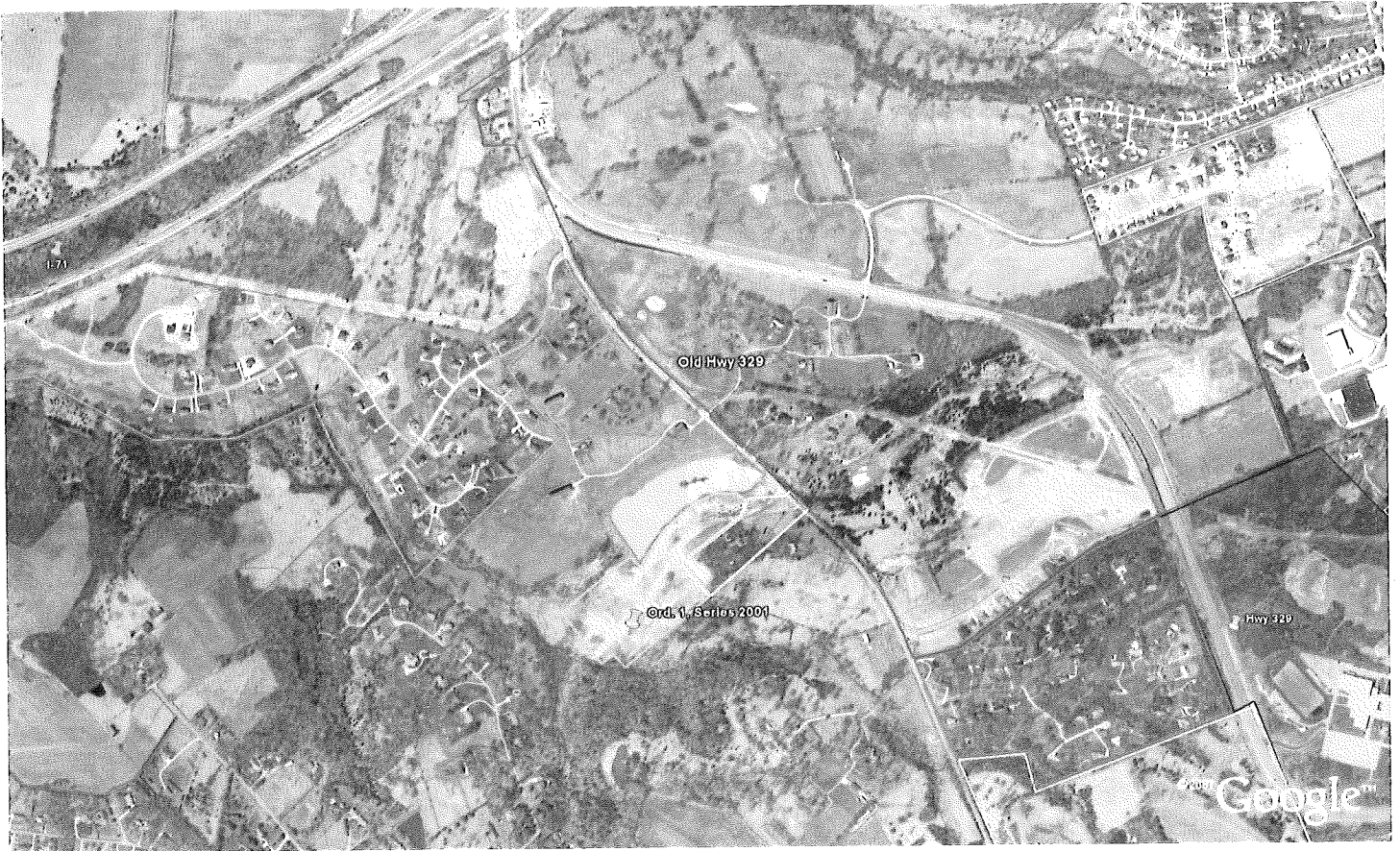
BEGINNING at a corner with the Corporate Limits of the City of Crestwood, Oldham County, Kentucky, at the south corner of the "Leland Tract" to the southwest of Kentucky Highway 329 as annexed in 2000, and being a corner with the land of Gary L. and Karen A. Haupt; thence with the northwest line of Haupt, South 49 degrees 58 minutes 03 seconds West 787.60 feet; thence with new corporate limit lines with the land of Ruth G. Clore the following courses and distances:

- North 46 degrees 17 minutes 17 seconds West 210.13 feet;
- South 43 degrees 42 minutes 43 seconds West 130.46 feet;
- North 46 degrees 17 minutes 17 seconds West 388.43 feet;
- North 43 degrees 42 minutes 43 seconds East 255.00 feet;
- North 36 degrees 48 minutes 43 seconds East 105.77 feet;
- North 42 degrees 32 minutes 31 seconds East 158.85 feet;
- North 50 degrees 20 minutes 48 seconds East 159.96 feet;
- South 56 degrees 16 minutes 40 seconds East 155.00 feet;
- North 33 degrees 43 minutes 20 seconds East 220.00 feet;
- North 36 degrees 43 minutes 44 seconds East 130.47 feet;
- North 46 degrees 56 minutes 43 seconds East 138.22 feet;
- North 57 degrees 44 minutes 21 seconds East 138.22 feet;
- North 68 degrees 28 minutes 01 seconds East 136.76 feet;
- North 73 degrees 22 minutes 20 seconds East 110.00 feet; and

South 66 degrees 49 minutes 20 seconds East 50.70 feet to a point in the Corporate Limits; thence with the Corporate Limits, South 01 degrees 53 minutes 37 seconds East 90.29 feet; South 51 degrees 46 minutes 47 seconds West 570.96 feet; and South 43 degrees 37 minutes 05 seconds East 398.79 feet to the beginning, containing 14.838 acres per plat dated January 8, 2001.

Description Prepared By


John A. Harrison
Professional Land Surveyor



CITY OF CRESTWOOD – OLDHAM COUNTY
ORDINANCE 1, SERIES 2001

CLORE, Ruth G.

HAUPT, Gary L. & Karen A.

BROWN, Everett S. & Edith Mary

Corporate Limits

CITY OF CRESTWOOD

Corporate Limits

14.838 Acres

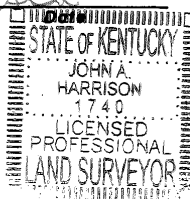
CLORE, Ruth G.

KY HWY. 329

NOTE: This plat was prepared from recorded deeds, existing surveys, right-of-way plats and other public documents. It is intended to be used only for this annexation.

PLAT PREPARED BY

John A. Harrison
PLS No. 1740



ANNEXATION AREA : 14.838 ACRES

ANNEXATION PLAT
CITY OF CRESTWOOD
OLDHAM COUNTY, KENTUCKY

Location: AS SHOWN

Reference: DEEDS OF RECORD & SURVEYS ON FILE

BY
HARRISON
LAND SURVEYING, INC.
306 W. JEFFERSON STREET - LA GRANGE, KY. 40031
(502) 222-7487

JAN. 10, 2001

Scale: 1" = 200'



POB

