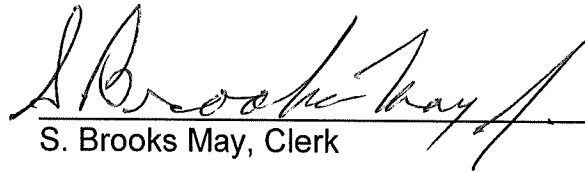


CITY CLERK CERTIFICATION

I, the undersigned, being duly appointed, qualified and acting City Clerk of the City of Crestwood, Oldham County, Kentucky, states that the foregoing 3 pages of Ordinance No. 3, Series 2003, is a true, correct and complete copy, and was duly adopted and lawfully passed by the Crestwood City Commission at a duly convened business meeting of the Crestwood City Commission held on the 30TH day of APRIL, 2003, all as it appears in the official records of said City.

WITNESS my hand, as the Clerk of the City of Crestwood, Oldham County, Kentucky this 28TH day of JANUARY, 2008.



S. Brooks May, Clerk

RECEIVED AND FILED
DATE January 29, 2008

TREY GRAYSON
SECRETARY OF STATE
COMMONWEALTH OF KENTUCKY
BY Gandie Adkinson

COMMONWEALTH OF KENTUCKY
CITY OF CRESTWOOD
ORDINANCE NO. 3, SERIES 2003

SUBJECT: AN ORDINANCE ANNEXING CONTIGUOUS PROPERTY TO THE CITY OF CRESTWOOD, KENTUCKY, BEING A CERTAIN TRACT OF LAND LOCATED IN OLDHAM COUNTY, KENTUCKY, MORE PARTICULARLY HEREINAFTER DESCRIBED.

BE IT ORDAINED BY THE BOARD OF CITY COMMISSIONERS OF THE CITY OF CRESTWOOD, KENTUCKY, THAT:

SECTION ONE: The following territory lying contiguous to the present boundaries of the City of Crestwood, Oldham County, Kentucky shall be annexed into the City of Crestwood, Kentucky in accordance with KRS 81A.410 to 81A.470 and other applicable laws, rules and regulations. Said tract of land is now within the county of Oldham and is adjacent to and contiguous to the present City boundaries and is not located in any other incorporated area and is described as follows:

BEGINNING at a point in the northeast right of way of Kentucky Highway 329 (thirty feet from centerline) and being a corner in the corporate limits of the City of Crestwood, Oldham County, Kentucky; thence crossing Highway 329, South 44 degrees 16 minutes 48 seconds West 60.00 feet; thence running with the lines of the corporate limits and continuing with the northwest and southwest lines of Summerfield subdivision the following courses and distances:

South 75 degrees 21 minutes 33 seconds West 297.72 feet;
South 01 degrees 53 minutes 37 seconds East 42.40 feet;
North 66 degrees 49 minutes 20 seconds West 50.70 feet;
South 73 degrees 22 minutes 20 seconds West 110.00 feet;
South 68 degrees 28 minutes 01 degrees West 136.76 feet;
South 57 degrees 44 minutes 21 seconds West 138.22 feet;
South 46 degrees 56 minutes 43 seconds West 138.22 feet;
South 36 degrees 43 minutes 44 seconds West 130.47 feet;
South 33 degrees 43 minutes 20 seconds West 220.00 feet;
North 56 degrees 16 minutes 40 seconds West 155.00 feet;
South 50 degrees 20 minutes 48 seconds West 159.96 feet;
South 42 degrees 32 minutes 31 seconds West 158.85 feet;
South 36 degrees 48 minutes 43 seconds West 105.77 feet;
South 43 degrees 42 minutes 43 seconds West 255.00 feet;
South 46 degrees 17 minutes 17 seconds East 388.43 feet;
North 43 degrees 42 minutes 43 seconds East 130.46 feet; and
South 46 degrees 17 minutes 17 seconds East 210.13 feet to a point in the northwest line of Gary L. and Karen A. Haupt; thence leaving the incorporated area of the City of Crestwood and running with said line of Haupt, South 49 degrees 58 minutes 03 seconds

West 788.46 feet to a point in the easterly line of Briar Hill Farms subdivision; thence with the easterly lines of Briar Hill Farms the following courses and distances:

- North 80 degrees 58 minutes 44 seconds West 18.79 feet;
- North 08 degrees 24 minutes 08 seconds West 121.37 feet;
- North 08 degrees 00 minutes 24 seconds West 494.00 feet;
- North 40 degrees 05 minutes 24 seconds West 92.00 feet;
- North 43 minutes 55 degrees 24 seconds West 90.00 feet;
- North 54 degrees 05 minutes 24 seconds West 50.50 feet;
- North 72 degrees 55 minutes 24 seconds West 296.90 feet;
- North 54 degrees 20 minutes 24 seconds West 65.70 feet;
- North 35 degrees 39 minutes 36 seconds East 50.00 feet;
- North 54 degrees 20 minutes 24 seconds West 405.70 feet;
- South 35 degrees 39 minutes 36 seconds West 50.00 feet;

North 54 degrees 20 minutes 24 seconds West 111.00 feet to a point in the southwest line of the incorporated area of the City of Crestwood; thence North 44 degrees 19 minutes 20 seconds East 31.75 feet to a corner with Spring Hill subdivision; thence with the lines of Spring Hill and continuing with the corporate limits, the following courses and distances:

- North 48 degrees 21 minutes 13 seconds East 1,523.62 feet;
- North 42 degrees 09 minutes 13 seconds West 459.59 feet;
- North 30 degrees 58 minutes 46 seconds West 204.67 feet; and

North 47 degrees 44 minutes 52 seconds East 360.83 feet to a corner with David L. and Joan T. Bryant; thence continuing with the corporate limits and with the line of said Bryant and then with the lines of Hiram C. and Peggy E. Taylor, South 40 degrees 19 minutes 11 seconds East 300.00 feet; and North 55 degrees 13 minutes 49 seconds East 414.26 feet to a point in the southwest right of way of Kentucky Highway 329 (thirty feet from centerline); thence continuing with the corporate limits and crossing said highway, North 51 degrees 48 minutes 54 seconds East 60.00 feet to appoint in the northeast right of way (thirty feet from centerline); thence continuing with the corporate limits and with said northeast right of way, with a curve to the left having a central angle of 07 degrees 32 minutes 06 seconds and a radius of 2412.50 feet, the chord of which is South 41 degrees 57 minutes 09 seconds East 317.04 feet, to a point of tangency; and South 45 degrees 43 minutes 12 seconds East 1,289.12 feet to the beginning, containing 72.059 acres per plat prepared by John A. Harrison, Professional Land Surveyor, from deeds, plats and surveys of record.

SECTION TWO: The Board of Commissioners hereby finds that the annexation criteria set forth in KRS 81A.410 (1) exist and that no part of the territory to be annexed is presently within the boundaries of an incorporated city.

SECTION THREE: The City Commissioners of the City of Crestwood, Kentucky, further find that all property owners of record within the territory proposed to be annexed have either consented to the annexation or filed no objections or remonstrance in the manner prescribed by the Kentucky Revised Statutes within sixty (60) days from the date of the enactment of the Ordinance proposing to annex the hereinabove described territory.

SECTION FOUR: Immediately upon the effective date hereof, the Clerk of the City of Crestwood is hereby authorized and directed to publish this Ordinance in the Oldham Era in the absence of a daily or weekly newspaper published within the boundaries of the City of Crestwood.

SECTION FIVE: This Ordinance shall take effect immediately upon its passage, approval and publication.

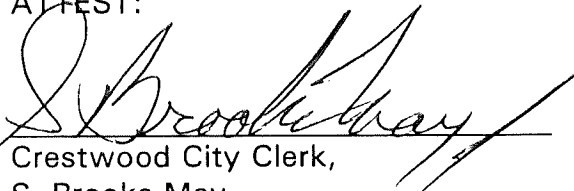
Adopted at its first reading this 9th day of April, 2003.

The second reading shall be held on the 30TH day of APRIL, 2003.



Dennis L. Deibel, Mayor

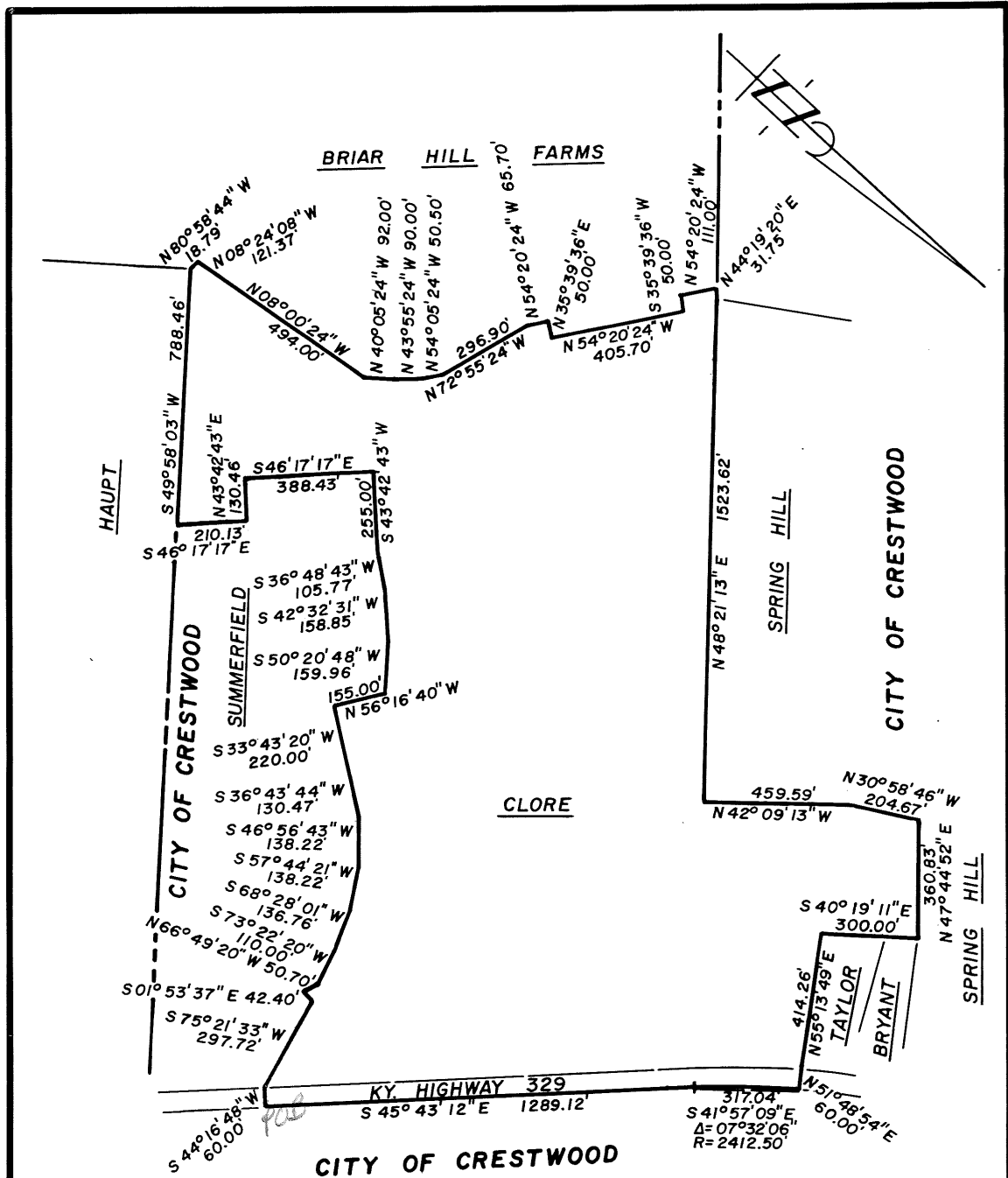
ATTEST:



Crestwood City Clerk,
S. Brooks May



CITY OF CRESTWOOD – OLDHAM COUNTY
ORDINANCE 3, SERIES 2003



ANNEXATION AREA : 72.059 ACRES

PLAT PREPARED (FROM DEEDS, SURVEYS AND OTHER PLATS OF RECORD) BY

John A. Harrison

John A. Harrison
P.L.S. No. 1740

STATE OF KENTUCKY
JOHN A. HARRISON
1740
LICENSED PROFESSIONAL
LAND SURVEYOR

ANNEXATION PLAT
CITY OF CRESTWOOD
OLDHAM COUNTY, KENTUCKY

Location: AS SHOWN

Reference: DEEDS, PLATS & SURVEYS OF RECORD

BY
HARRISON
LAND SURVEYING, INC.
306 W. JEFFERSON STREET - LAGRANGE, KY. 40031
(502) 222-7487

APRIL 9, 2003

Scale: 1" = 400'

