

RESOLUTION 88-2009

A RESOLUTION ADOPTING A MODERN AND ACCURATE LEGAL DESCRIPTION OF TERRITORY PREVIOUSLY ANNEXED BY ORDINANCE

WHEREAS, the City of Crittenden has enacted an ordinance annexing property into the corporate limits of the City of Crittenden; and

WHEREAS, the annexation may contain a prior survey prepared by a now unknown individual and may reference documentation that is no longer in existence; and

WHEREAS, the City wishes to provide a modern, accurate, easily identifiable legal description reflection bearings and coordinates based upon the state plan coordinate system, including relevant GPS and GIS data, same having been certified by a professional land surveyor for the prior annexation; and

WHEREAS, the City wishes to comply with the requirements of KRS 81A.470 effective July 13, 2004; and

WHEREAS, the City does not intend to amend or replace its prior ordinance annexing, but rather to interpret the defined boundaries of the territory previously annexed and adopt a modern and accurate legal description of territory previously annexed; and

WHEREAS, the City previously passed Resolution 88-2009 to adopt new legal descriptions and plats for seven prior annexation ordinances but was requested by Commonwealth of Kentucky to adopt separate resolutions for each annexation ordinance; and

WHEREAS, the City intends to comply with the Commonwealth's request.

NOW THEREFORE BE IT RESOLVED BY THE CITY COUNCIL OF THE CITY OF CRITTENDEN, KENTUCKY;

That the City Council of the City of Crittenden hereby adopts the following legal descriptions and plat attached hereto as prepared by Logan Murphy, of Hicks and Mann Surveyors, Licensed Professional Land Surveyor No. 3316 by new survey as an accurate description of the property previously annexed into the corporate city limits of the City of Crittenden by the following ordinance:

Ordinance 159-2001 dated July 10, 2001, a copy of which is attached hereto, and hereby adopts said new legal description and plat as the official legal description and plat to be adopted by the City for all purposes when referencing this prior annexation. This new legal as prepared by Logan Murphy, a Licensed Professional Land Surveyor No. 3316, reads as follows:

Lying and being in Grant County, Kentucky, lying on the South side of Crittenden-Mt. Zion Road, 1.0 miles West of U.S. Route #25, and more particularly described as follows to-wit:.

Beginning at a point in the centerline of Crittenden – Mt. Zion Road, a corner to Greenview Estates; thence leaving said centerline with the lines of Greenview Estates, S 15°00'00" W a distance of 150.00 feet to a point; thence S 70°30'00" E a distance of 117.00 feet; thence S 22°49'00" W a distance of 114.00 feet; thence S 30°16'00" W a distance of 108.40 feet; thence S 22°12'00" W a distance of 196.00 feet; thence S

16°00'00" W a distance of 361.00 feet; thence S 01°48'00" W a distance of 123.00 feet to a stump; thence S 13°00'00" W a distance of 148.00 feet to a stump; thence S 07°54'00" E a distance of 68.00 feet; thence S 05°00'00" W a distance of 322.00 feet to a 30' sycamore; thence S 02°36'00" W a distance of 221.00 feet to a post; thence S 84°05'00" E a distance of 71.70 feet; thence S 04°02'00" W a distance of 358.50 feet; thence S 03°32'00" W a distance of 556.00 feet to a 10" cherry; thence S 03°44'00" W a distance of 502.00 feet to a walnut; thence S 05°37'00" W a distance of 77.00 feet; thence S 09°06'00" W a distance of 99.00 feet to a point; thence S 03°00'00" W a distance of 123.80 feet to a point; thence S 02°48'00" W a distance of 105.00 feet to a point; thence S 08°06'00" W a distance of 150.00 feet to a 24" red oak; thence S 08°24'00" W a distance of 254.20 feet to a 12" ash; thence S 12°18'00" W a distance of 145.00 feet to a post, a corner to The City of Crittenden, (D.B. 252, Pg. 093); thence with the lines of The City of Crittenden, S 10°51'00" W a distance of 133.20 feet to a oak; thence S 09°40'00" W a distance of 91.00 feet to a hickory; thence S 09°21'00" W a distance of 311.00 feet to a forked ash, a corner to The City of Crittenden, (D.B. 252, Pg. 250); thence with the lines of The City of Crittenden, N 68°42'00" W a distance of 275.80 feet to a point; thence N 68°17'00" W a distance of 448.50 feet; thence N 67°40'00" W a distance of 678.00 feet; thence S 07°55'00" W a distance of 256.60 feet; thence S 07°59'00" W a distance of 241.00 feet; thence S 08°12'00" W a distance of 204.00 feet; thence S 08°42'00" W a distance of 177.50 feet to a point in the line of William Gene & Brenda Kay Points, (D.B. 141, Pg. 577); thence with the line of Points, S 77°54'00" W a distance of 231.00 feet to a point in Ten Mile Creek; thence with said creek, N 45°06'00" W a distance of 330.00 feet; thence N 62°30'00" W a distance of 396.00 feet to a corner to Dean Colson, (D.B. 198, Pg. 707); thence with said creek and the line of Colson, N 75°06'00" W a distance of 292.00 feet to a point, a corner to Tracy Gallenstein, (D.B. 277, Pg. 739); thence leaving Ten Mile Creek with the lines of Gallenstein, N 04°54'00" E a distance of 148.50 feet to a post; thence N 07°03'00" E a distance of 248.50 feet to a point; thence N 03°57'00" E a distance of 238.80 feet to a walnut; thence N 04°25'00" E a distance of 204.50 feet to a point; thence N 04°37'00" E a distance of 543.00 feet to a walnut; thence N 05°09'00" E a distance of 893.00 feet to a hickory; thence N 05°41'00" E a distance of 196.00 feet to a point; thence N 03°07'00" E a distance of 121.20 feet to a post in the line of Todd & Julie Covey, (D.B. 248, Pg. 239); thence with the line of Covey and Wayne Whalen, (D.B. 125, Pg. 162), S 85°24'00" E a distance of 1091.30 feet to a post corner to Whalen; thence N 07°09'00" E a distance of 307.00 feet to a point; thence, N 07°36'00" E a distance of 209.00 feet to a point; thence, N 06°38'00" E a distance of 160.00 feet to a point; thence N 07°07'00" E a distance of 927.40 feet to a point; thence N 05°45'00" E a distance of 297.00 feet to a point in the centerline of Crittenden - Mt. Zion Road; thence with said centerline, S 85°25'00" E a distance of 291.00 feet; thence S 88°40'00" E a distance of 100.00 feet; thence N 83°57'00" E a distance of 100.00 feet; thence N 76°05'00" E a distance of 100.00 feet; thence N 69°18'00" E a distance of 100.00 feet; thence N 64°09'00" E a distance of 100.00 feet; thence N 62°07'00" E a distance of 300.00 feet; thence N 66°00'00" E a distance of 100.00 feet; thence N 80°37'00" E a distance of 100.00 feet; thence S 79°09'00" E a distance of 100.00 feet; thence S 70°42'00" E a distance of 198.00 feet to The Point of Beginning, having an area of 217.5 acres more or less exclusive of all right of ways and easements of record.

The above parcel of land is subject to the right of way of Crittenden – Mt. Zion Road on the south side.

The above description was prepared by Hicks & Mann, Inc. on October 30th, 2008, from City of Crittenden, Ordinance No. 159-2001, and does represent a boundary survey.

CITY OF CRITTENDEN

DATED: 10/14/2009

BY: Gayle Cayton
Gayle Cayton, Mayor

ATTEST: Megan Simpson
Megan Simpson, City Clerk

CERTIFICATION

I certify I am the duly qualified City Clerk of the City of Crittenden, Kentucky,
and the foregoing 3 pages of Resolution No.88-2009 is a true, correct and
complete copy duly adopted by the City Council at a duly convened meeting held on
October 6, 2009, all as appears in the official records of said City.

WITNESS, my hand and Seal, this 7th day of October, 2009.


Megan Simpson, City Clerk

RECEIVED AND FILED
DATE December 29, 2009

TREY GRAYSON
SECRETARY OF STATE
COMMONWEALTH OF KENTUCKY
BY Kandie Adams

LEGAL DESCRIPTION
Eagle Creek Country Club
(Ordinance No. 159-2001)

217.5 Acres

Lying and being in Grant County, Kentucky, lying on the South side of Crittenden-Mt. Zion Road, 1.0 miles West of U.S. Route #25, and more particularly described as follows to-wit:.

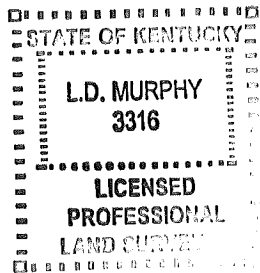
Beginning at a point in the centerline of Crittenden – Mt. Zion Road, a corner to Greenview Estates; thence leaving said centerline with the lines of Greenview Estates, S 15°00'00" W a distance of 150.00 feet to a point; thence S 70°30'00" E a distance of 117.00 feet; thence S 22°49'00" W a distance of 114.00 feet; thence S 30°16'00" W a distance of 108.40 feet; thence S 22°12'00" W a distance of 196.00 feet; thence S 16°00'00" W a distance of 361.00 feet; thence S 01°48'00" W a distance of 123.00 feet to a stump; thence S 13°00'00" W a distance of 148.00 feet to a stump; thence S 07°54'00" E a distance of 68.00 feet; thence S 05°00'00" W a distance of 322.00 feet to a 30' sycamore; thence S 02°36'00" W a distance of 221.00 feet to a post; thence S 84°05'00" E a distance of 71.70 feet; thence S 04°02'00" W a distance of 358.50 feet; thence S 03°32'00" W a distance of 556.00 feet to a 10" cherry; thence S 03°44'00" W a distance of 502.00 feet to a walnut; thence S 05°37'00" W a distance of 77.00 feet; thence S 09°06'00" W a distance of 99.00 feet to a point; thence S 03°00'00" W a distance of 123.80 feet to a point; thence S 02°48'00" W a distance of 105.00 feet to a point; thence S 08°06'00" W a distance of 150.00 feet to a 24" red oak; thence S 08°24'00" W a distance of 254.20 feet to a 12" ash; thence S 12°18'00" W a distance of 145.00 feet to a post, a corner to The City of Crittenden, (D.B. 252, Pg. 093); thence with the lines of The City of Crittenden, S 10°51'00" W a distance of 133.20 feet to a oak; thence S 09°40'00" W a distance of 91.00 feet to a hickory; thence S 09°21'00" W a distance of 311.00 feet to a forked ash, a corner to The City of Crittenden, (D.B. 252, Pg. 250); thence with the lines of The City of Crittenden, N 68°42'00" W a distance of 275.80 feet to a point; thence N 68°17'00" W a distance of 448.50 feet; thence N 67°40'00" W a distance of 678.00 feet; thence S 07°55'00" W a distance of 256.60 feet; thence S 07°59'00" W a distance of 241.00 feet; thence S 08°12'00" W a distance of 204.00 feet; thence S 08°42'00" W a distance of 177.50 feet to a point in the line of William Gene & Brenda Kay Points, (D.B. 141, Pg. 577); thence with the line of Points, S 77°54'00" W a distance of 231.00 feet to a point in Ten Mile Creek; thence with said creek, N 45°06'00" W a distance of 330.00 feet; thence N 62°30'00" W a distance of 396.00 feet to a corner to Dean Colson, (D.B. 198, Pg. 707); thence with said creek and the line of Colson, N 75°06'00" W a distance of 292.00 feet to a point, a corner to Tracy Gallenstein, (D.B. 277, Pg. 739); thence leaving Ten Mile Creek with the lines of Gallenstein, N 04°54'00" E a distance of 148.50 feet to a post; thence N 07°03'00" E a distance of 248.50 feet to a point; thence N 03°57'00" E a distance of 238.80 feet to a walnut; thence N 04°25'00" E a distance of 204.50 feet to a point; thence N 04°37'00" E a distance of 543.00 feet to a walnut; thence N 05°09'00" E a distance of 893.00 feet to a hickory; thence N 05°41'00" E a distance of 196.00 feet to a point; thence N 03°07'00" E a distance of 121.20 feet to a post in the line of Todd & Julie Covey, (D.B. 248, Pg. 239); thence with the line of Covey and Wayne Whalen, (D.B. 125, Pg. 162), S 85°24'00" E a distance of 1091.30 feet to a post corner to Whalen; thence N 07°09'00" E a distance of 307.00 feet to a point; thence, N 07°36'00" E a distance of 209.00 feet to a point; thence, N 06°38'00" E a distance of 160.00 feet to a point; thence N 07°07'00" E a distance of 927.40 feet to a point; thence N

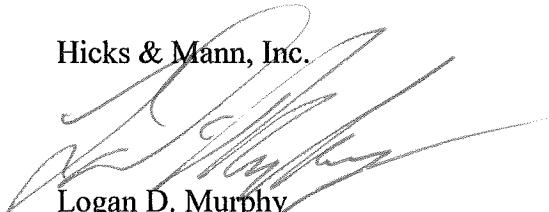
05°45'00" E a distance of 297.00 feet to a point in the centerline of Crittenden - Mt. Zion Road; thence with said centerline, S 85°25'00" E a distance of 291.00 feet; thence S 88°40'00" E a distance of 100.00 feet; thence N 83°57'00" E a distance of 100.00 feet; thence N 76°05'00" E a distance of 100.00 feet; thence N 69°18'00" E a distance of 100.00 feet; thence N 64°09'00" E a distance of 100.00 feet; thence N 62°07'00" E a distance of 300.00 feet; thence N 66°00'00" E a distance of 100.00 feet; thence N 80°37'00" E a distance of 100.00 feet; thence S 79°09'00" E a distance of 100.00 feet; thence S 70°42'00" E a distance of 198.00 feet to The Point of Beginning, having an area of 217.5 acres more or less exclusive of all right of ways and easements of record.

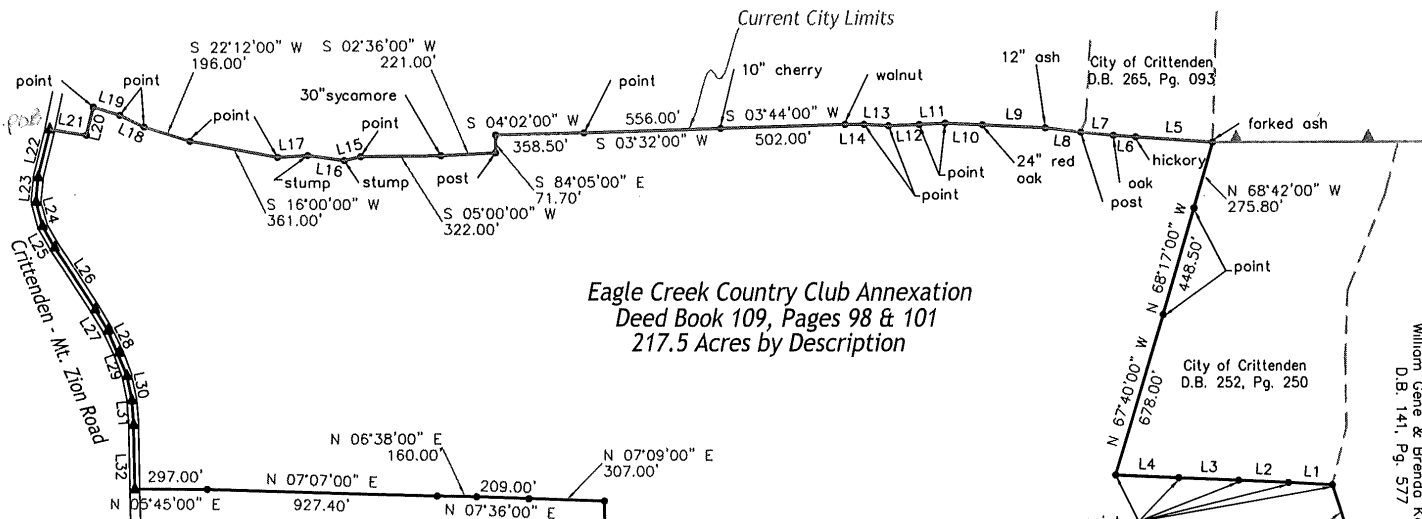
The above parcel of land is subject to the right of way of Crittenden – Mt. Zion Road on the south side.

The above description was prepared by Hicks & Mann, Inc. on October 30th, 2008, from City of Crittenden, Ordinance No. 159-2001, and does represent a boundary survey.

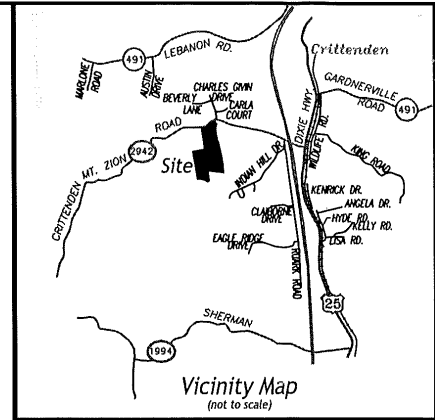
Hicks & Mann, Inc.




Logan D. Murphy
Professional Land Surveyor
License #3316



Eagle Creek Country Club Annexation
 Deed Book 109, Pages 98 & 101
 217.5 Acres by Description



L1	S 08°42'00" W	177.50'
L2	S 08°12'00" W	204.00'
L3	S 07°59'00" W	241.00'
L4	S 07°55'00" W	256.60'
L5	S 09°21'00" W	91.00'
L6	S 09°40'00" W	311.00'
L7	S 10°51'00" W	133.20'
L8	S 12°18'00" W	145.00'
L9	S 08°24'00" W	254.20'
L10	S 08°06'00" W	150.00'
L11	S 02°48'00" W	105.00'
L12	S 03°00'00" W	123.80'
L13	S 09°06'00" W	99.00'
L14	S 05°37'00" W	77.00'
L15	S 07°54'00" E	68.00'
L16	S 13°00'00" W	148.00'
L17	S 01°48'00" W	123.00'
L18	S 30°16'00" W	108.40'
L19	S 22°49'00" W	114.00'
L20	S 70°30'00" E	117.00'
L21	S 15°00'00" W	150.00'
L22	S 70°42'00" E	198.00'
L23	S 79°09'00" E	100.00'
L24	N 80°37'00" E	100.00'
L25	N 66°00'00" E	100.00'
L26	N 62°07'00" E	300.00'
L27	N 64°09'00" E	100.00'
L28	N 69°18'00" E	100.00'
L29	N 76°05'00" E	100.00'
L30	N 83°57'00" W	100.00'
L31	S 88°40'00" E	100.00'
L32	S 85°25'00" E	291.00'

Wayne Whalen
 D.B. 125, Pg. 162

Todd & Julie Covey
 D.B. 246, Pg. 239

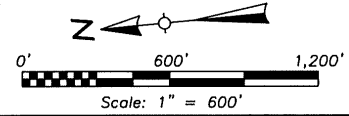
Tracy Gallenstein
 D.B. 277, Pg. 739

Dean Colson
 D.B. 198, Pg. 707

STATE OF KENTUCKY
 L.D. MURPHY
 3316
 LICENSED
 PROFESSIONAL
 LAND SURVEYOR

NOTE;
 THIS DRAWING WAS PREPARED FROM THE
 DESCRIPTION CONTAINED IN THE CITY OF
 CRITTENDEN, ORDINANCE 159-2001, AND
 DOES NOT REPRESENT A FIELD SURVEY BY
 HICKS & MANN, INC. THIS DRAWING IS FOR
 INFORMATION PURPOSES, ONLY.

Logan D. Murphy 10/6/09
 Logan D. Murphy, LS #3316 Date



SURVEY FOR DESCRIPTION

EAGLE CREEK COUNTRY CLUB (ORD. NO. 159-2001)

**ON THE SOUTH SIDE OF CRITTENDEN - MT. ZION RD.
 1.0 MILES WEST OF U.S. 25
 CITY OF CRITTENDEN, GRANT COUNTY, KENTUCKY**

Scale: 1" = 600'
Date: 10/30/08
Dwn By: CE Cleveland
Job No.: 08-135
Surveyed: N/A
Filename: 09016ECCC

HICKS & MANN, INC.
 Consulting Engineers
 Land Surveyors
 Planners
 P.O. Box 9
 Williamstown, Ky. 41097
 (859) 824-5231