

-BOARD OF COMMISSIONERS-

MELVIN E. HAMPTON
PUBLIC AFFAIRS

VIRGIE WELLS
PUBLIC PROPERTY

DAVID GASSER
PUBLIC SAFETY

FRANKIE C. TAYLOR
PUBLIC WORKS

THOMAS CLAYTON
PUBLIC FINANCE

CITY OF CYNTHIANA

MELVIN HAMPTON, MAYOR
HOURS 8:00 A.M. TO 4:00 P.M.
P.O. BOX 67
CYNTHIANA, KENTUCKY 41031

May 8, 1992

Office of Secretary of State
Capitol Building
Frankfort, Kentucky 40601

RECEIVED
MAY 17 1992
SECRETARY OF STATE
COMMONWEALTH OF KY

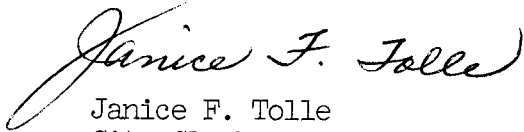
Subject: Annexation of Property by City of Cynthiana, Kentucky

Dear Sir:

Pursuant to the requirements of KRS 81A.470 enclosed please find a certified copy of Ordinance Number 1228 of the City of Cynthiana, Kentucky annexing certain property to the City. Also, enclosed is an accurate map of the annexed area with metes and bounds description as required by law.

Please record these documents in the appropriate manner. If you have any questions, please advise.

Sincerely,



Janice F. Tolle
City Clerk
City of Cynthiana, Ky.

JFT/kb

ORDINANCE NO. 1228

AN ORDINANCE EXTENDING THE BOUNDARY OF THE CITY OF CYNTHIANA AND ANNEXING CERTAIN CONTIGUOUS PROPERTY TO THE CITY BEING APPROXIMATELY 40.559 ACRES, LYING SOUTH OF THE PRESENT CITY BOUNDARY AND WEST OF NEW LAIR ROAD (KY. 982), SAID PROPERTY BEING CURRENTLY OWNED BY THE HARRISON COUNTY INDUSTRIAL FOUNDATION INC.

WHEREAS, the City Commission recognizes the importance of orderly industrial growth in perserving and expanding the benefits of municipal government for all citizens; and

WHEREAS, the City recognizes the growth of industrial development in the area of New Lair Road coming into the City from the South, and

WHEREAS, it is desirable for all concerned that said industrial growth development occur within the expanded limits of the City of Cynthiana, and

WHEREAS, the City is willing and able to provide municipal water and sanitary sewer facilities to the annexed area to ensure safe and reliable water supply and safe and healthful disposal of waste in the area of potential development,

NOW, THEREFORE, BE IT ORDAINED BY THE CITY OF CYNTHIANA, KENTUCKY:

SECTION 1: That the City of Cynthiana, Kentucky hereby extends its boundaries and annexes that certain contiguous property to the City as shown in Exhibit "A" attached hereto and incorporated herein by reference and more particularly described as follows:

Beginning at a #4 steel rebar in the western right-of-way line of New Lair Road (Ky. 982), and in the northern line of CSX Transportation Railroad; thence with the western right-of-way line of New Lair Road (Ky. 982), for three calls, South 25 degrees 19 minutes 32 seconds West 260.75 feet, southwesterly along the arc of a 517.47 foot radius curve to the left, a distance of 161.53 feet (chord South 16 degrees 25 minutes 48 seconds West 160.87 feet), South 25 degrees 22 minutes 13 seconds West 60.34 feet to a #4 steel rebar, corner to Charles L. Woods, et al.; thence with Charles L. Woods, et al., for four calls, North 84 degrees 36 minutes 16 seconds West 346.04 feet to a #4

steel rebar, North 69 degrees 6 minutes 46 seconds West 77.59 feet to a #4 steel rebar, North 39 degrees 43 minutes 9 seconds West 697.10 feet to a #4 steel rebar, in the center of a 50 foot railroad easement, North 39 degrees 43 minutes 9 seconds West 1320.00 feet to a #4 steel rebar in the line of Ladish Co.; North 79 degrees 30 minutes 22 seconds East 1270.00 feet to a #4 steel rebar, in the western line of the CSX Transportation Railroad; thence with CSX Transportation Railroad for six calls, South 24 degrees 8 minutes 7 seconds East 117.15 feet, North 65 degrees 52 minutes 0 seconds East 10.00 feet, South 24 degrees 25 minutes 32 seconds East 223.59 feet, South 24 degrees 28 minutes and 38 seconds East 202.56 feet to a #4 steel rebar, in the center of a 50 foot easement, South 24 degrees 28 minutes and 38 seconds East 97.45 feet, South 24 degrees 5 minutes 45 seconds East 897.26 feet to the beginning and containing 40.559 acres and being subject to easements and rights-of-way of record and in existence and in accordance with a survey by Jerry L. Casey, LS on the 24th day of January, 1987. See plat recorded in Plat Cabinet 2, Sheet 17A.

SECTION 2: That annexation of this area to the City is desirable due to its great potential for industrial growth and development, and the advantages to be derived by all concerned from its orderly development and the furnishing of municipal water and sanitary sewers to the area.

SECTION 3: The zoning classification of the property hereby annexed shall remain unchanged as a result of the annexation.

SECTION 4: A copy of this Ordinance and all exhibits hereto shall be recorded in the Office of the Secretary of State of the Commonwealth of Kentucky, the Harrison County Clerk and the Office of the City Clerk of the City of Cynthiana.

SECTION 5: This Ordinance shall take effect from and after its passage, approval and publication as required by law.

First Reading and Approval: April 30, 1992

Second Reading and Passage: May 1, 1992

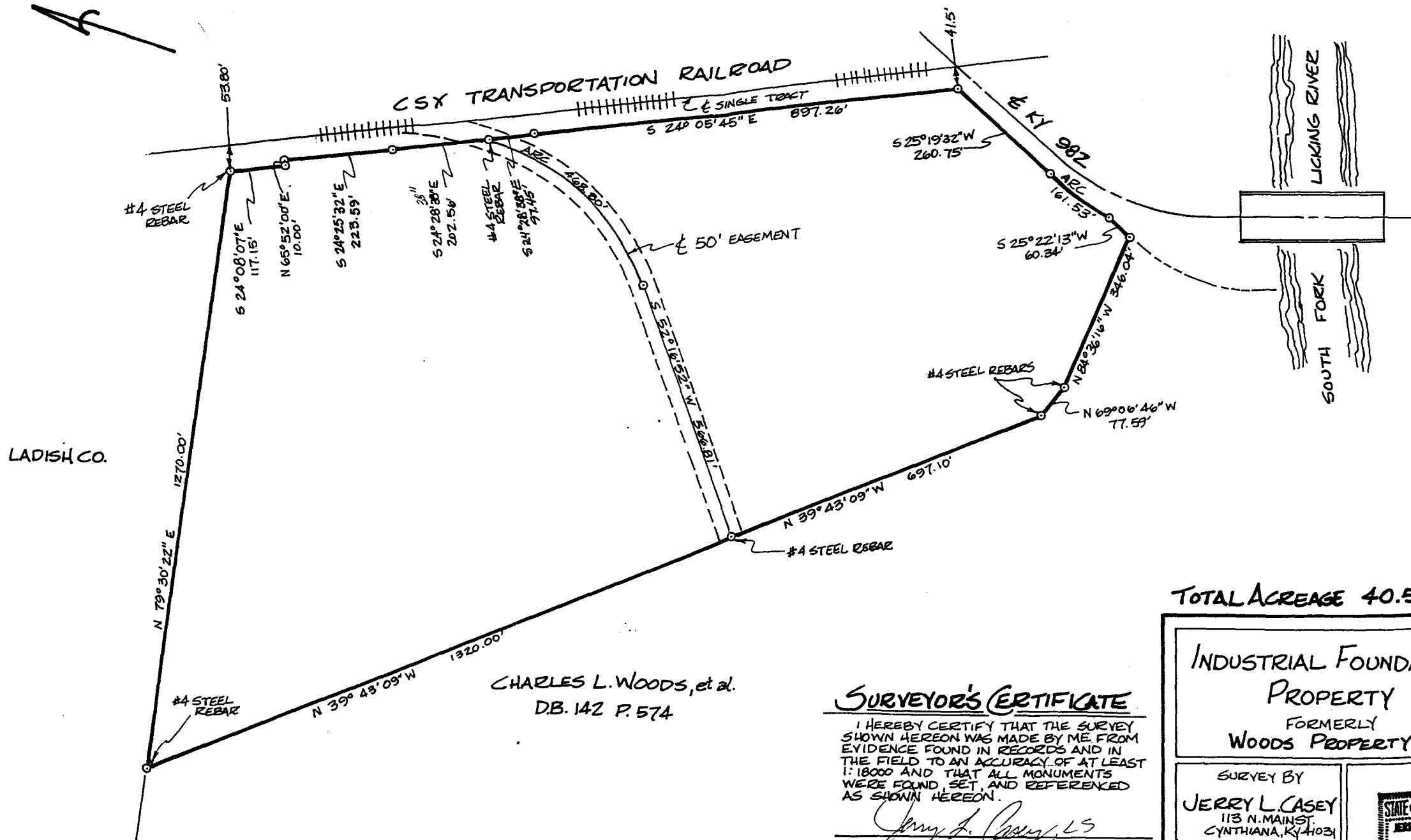
Melvin Hampton
Melvin Hampton, Mayor

ATTEST:

Janice F. Tolle
Janice Tolle, City Clerk

EASEMENT CURVE DATA
 RADIUS = 491.30'
 DEGREE OF CURVE = 11° 39' 43"
 CHORD = S 24° 56' 45" W 451.21'

R/W CURVE DATA
 RADIUS = 517.47'
 DEGREE OF CURVE = 11° 04' 20"
 CHORD = S 16° 25' 48" W 160.87'



LADISH CO.

CHARLES L. WOODS, et al.
 D.B. 142 P. 574

TOTAL ACREAGE 40.559

SURVEYOR'S CERTIFICATE

I HEREBY CERTIFY THAT THE SURVEY SHOWN HEREON WAS MADE BY ME FROM EVIDENCE FOUND IN RECORDS AND IN THE FIELD TO AN ACCURACY OF AT LEAST 1:18000 AND THAT ALL MONUMENTS WERE FOUND, SET, AND REFERENCED AS SHOWN HEREON.

Jerry L. Casey, LS
 JERRY L. CASEY, LS. #2017

INDUSTRIAL FOUNDATION
 PROPERTY
 FORMERLY
 WOODS PROPERTY

SURVEY BY
 JERRY L. CASEY
 113 N. MAIN ST.
 CYNTHIANA, KY 41031



DATE: 1-24-87
 SCALE: 1"=200'