

**CERTIFICATION**

I, the undersigned, Mary Chaudoin, do hereby certify that I am the duly qualified and acting City Clerk of the City of Elizabethtown, Kentucky, and as such Clerk I further certify that the attached is a true, correct and complete copy of Ordinance No. 5 - 1989 series duly adopted by the City Council of said City at a duly convened meeting held on Feb. 6, 1989 and thereafter signed by the Mayor as evidence of his approval, and now in full force and effect, all as appear from the official records of said City Council in my possession and under my control.

WITNESS my hand and Seal of the City, as of this 15<sup>th</sup> day of February, 2002.

Mary Chaudoin  
CITY CLERK

(Seal of the City)

RECEIVED AND FILED  
DATE Feb. 20, 2002  
JOHN Y. BROWN III  
SECRETARY OF STATE  
COMMONWEALTH OF KENTUCKY  
BY H. Adkinson

72.360

AN ORDINANCE ANNEXING CERTAIN PROPERTY KNOWN AS THE  
PINE VALLEY GOLF COURSE

THAT WHEREAS, the City of Elizabethtown has duly enacted and published an Ordinance complying with the provisions of KRS 81A.420 and KRS 424.140 (Subsection 4) and no Petition having been received by the Mayor of the City of Elizabethtown, as set out in paragraph 3 of KRS 81.A420.

BE IT THEREFORE ORDAINED by the City of Elizabethtown, Kentucky, that the following described unincorporated territory be and the same is annexed into the City of Elizabethtown, and is a part of the City of Elizabethtown for all purposes and subject to all laws, rules, regulations and ordinances of said Elizabethtown, Kentucky.

Said territory is more particularly described as follows:

The following described property is approximately 4500' East of Dixie Hwy. as measured along Pine Valley Drive and is bounded on the East by Bewley Hollow Road. Property is located in Hardin County, Kentucky.

The point of beginning is an existing iron pipe in the North R/W of Pinevalley Drive, said point is a corner of Tri-Crest Corp. (DB 333 PG 274), thence with Tri-Crest Corp. for three calls

North 21 degrees 18 minutes 44 seconds West for a distance of 1424.45 feet to an existing corner post, thence

South 58 degrees 23 minutes 10 seconds West for a distance of 52.54 feet to a forked oak tree, thence

North 28 degrees 38 minutes 10 seconds West for a distance of 488.41 feet to a 24" walnut tree in the line of Sam Jenkins (DB 323 PG 219), thence with Jenkins for two calls

North 73 degrees 27 minutes 48 seconds East for a distance of 1256.54 feet to an existing stone, thence

North 28 degrees 3 minutes 13 seconds East for a distance of 504.25 feet to a 12" cedar tree a corner of W. H. Moore (DB 418 PG 180), thence with Moore for three calls

South 75 degrees 57 minutes 11 seconds East for a distance of 763.33 feet to a 6" tree, thence

South 4 degrees 52 minutes 22 seconds West for a distance of 337.07 feet to an existing iron pin, thence

South 82 degrees 5 minutes 14 seconds East for a distance of 1389.85 feet to an existing iron pin a corner of Paul Bailey (DB 158 PG 303), thence with Bailey

South 4 degrees 31 minutes 21 seconds East for a distance of 538.15 feet to an existing iron pin a corner of Gregory Skillman (DB 509 PG 106), thence with Skillman for two calls

South 4 degrees 17 minutes 11 seconds East for a distance of 431.30 feet to an existing iron pin, thence

South 70 degrees 31 minutes 44 seconds East for a distance of 477.55 feet to a point in the West R/W of Bewley Hollow Road, thence with said R/W for seven calls

South 23 degrees 11 minutes 57 seconds West for a distance of 25.14 feet to a point, thence

South 10 degrees 30 minutes 30 seconds West for a distance of 92.26 feet to a point, thence

South 7 degrees 20 minutes 32 seconds West for a distance of 152.96 feet to a point, thence

South 2 degrees 43 minutes 14 seconds West for a distance of 92.74 feet to a point, thence

South 7 degrees 5 minutes 13 seconds East for a distance of 77.24 feet to a point, thence

South 19 degrees 43 minutes 2 seconds East for a distance of 83.91 feet to a point, thence

South 30 degrees 22 minutes 27 seconds East for a distance of 76.61 feet to a point a corner of Yusuf Deshmukh (DB 591 PG 94), thence with Deshmukh for two calls

South 75 degrees 1 minute 2 seconds West for a distance of 446.10 feet to a corner post, thence

South 9 degrees 31 minutes 38 seconds East for a distance of 463.08 feet to an existing iron pin a corner of Charles Eversole (DB 282 PG 319), thence with Eversole for two calls

South 9 degrees 28 minutes 3 seconds East for a distance of 200.86 feet to a corner post, thence

South 11 degrees 45 minutes 39 seconds West for a distance of 63.49 feet to a set iron pin a corner of Don Reeves (DB 170 PG 121), thence with Reeves for two calls

South 19 degrees 40 minutes 25 seconds West for a distance of 151.00 feet to a set iron pin, thence

South 7 degrees 10 minutes 27 seconds West for a distance of 175.00 feet to a set iron pin a corner of Michael Aliff (DB 540 PG 301), thence with Aliff

North 87 degrees 49 minutes 34 seconds West for a distance of 1013.00 feet to an existing corner post a corner of Peggy Crowley (DB 283 PG 229), thence with Crowley

North 8 degrees 20 minutes 13 seconds East for a distance of 431.88 feet to an existing pipe,

thence with Crowley and continuing with Marshall Johnson (DB 266 PG 139) and Michael Kimble (DB 584 PG 52)

South 62 degrees 27 minutes 37 seconds West for a distance of 1585.90 feet to an existing pipe in the line of Jack Ridge and Rick Crawford, thence with Ridge and Crawford for two calls

North 21 degrees 37 minutes 44 seconds West for a distance of 973.53 feet to an existing pipe, thence

North 22 degrees 53 minutes 47 seconds West for a distance of 297.64 feet to an existing stone a corner of Robert Shearer. Thence with Shearer and continuing across Pine Valley Drive

North 20 degrees 50 minutes 14 seconds West for a distance of 132.42 feet to the point of beginning.

Together with and subject to covenants, easements and restrictions of record.

Said property contains 219.103 acres per physical survey by Hawkins & Assoc. (Ky. RLS #2511).

BE IT FURTHER ORDAINED that the above described real estate be and the same is zoned Residential-1 (R-1).

READ FIRST TIME THIS THE 16<sup>th</sup> DAY OF Jan., 1989.

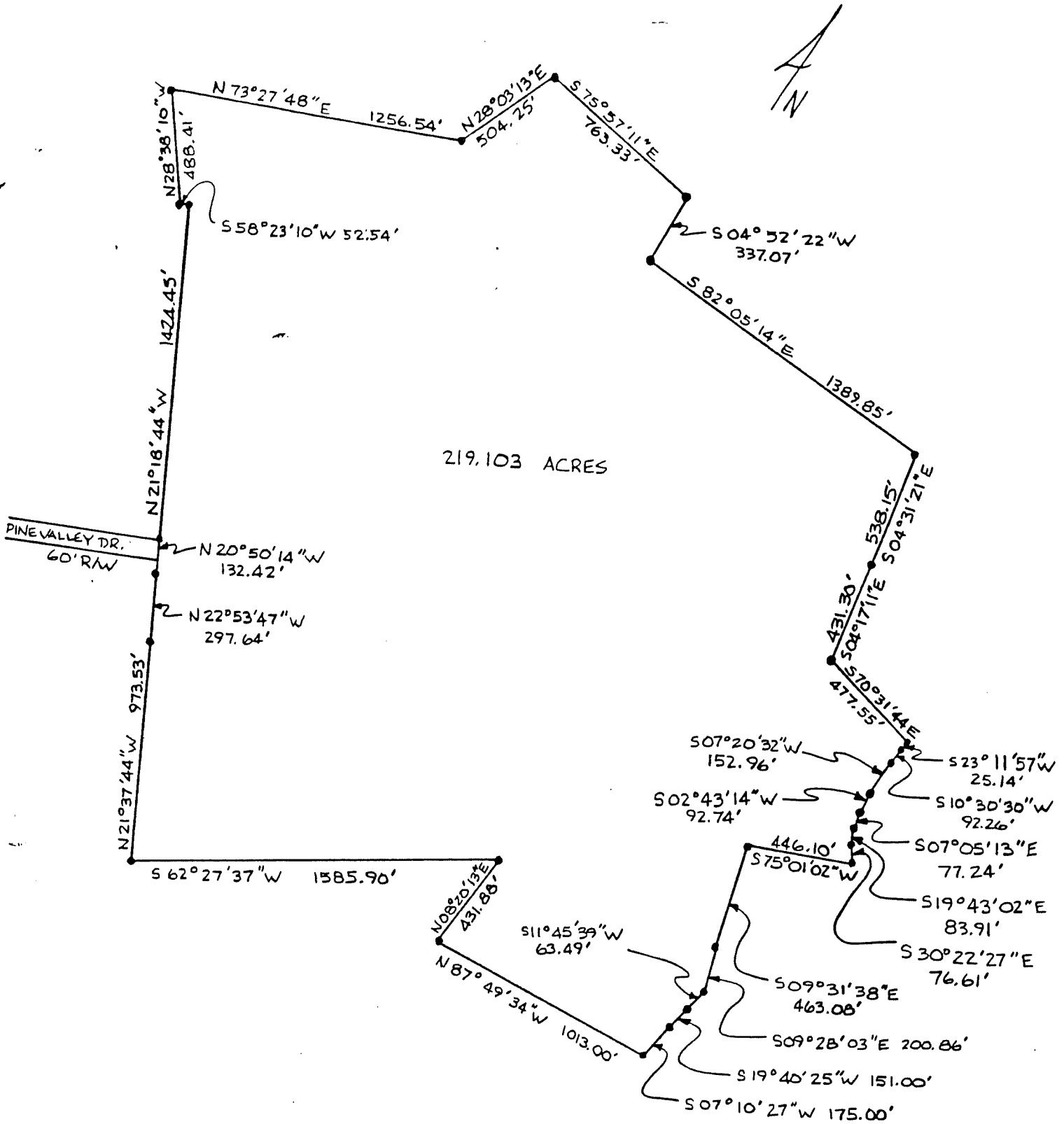
READ, ADOPTED AND APPROVED THIS THE 16<sup>th</sup> DAY OF Feb., 1989.

  
MICHAEL B. CARROLL, MAYOR

ATTEST:

  
ELNORA FULKERSON, CITY CLERK

2/19/89



ANNEXATION MAP  
SCALE 1"=600'

PROPOSED ZONING - R-1

PINE VALLEY GOLF COURSE