

**CERTIFICATION**

I, the undersigned, Mary Chaudoin, do hereby certify that I am the duly qualified and acting City Clerk of the City of Elizabethtown, Kentucky, and as such Clerk I further certify that the attached is a true, correct and complete copy of Ordinance No. 38 - 1999 series duly adopted by the City Council of said City at a duly convened meeting held on Nov. 1, 1999 and thereafter signed by the Mayor as evidence of his approval, and now in full force and effect, all as appear from the official records of said City Council in my possession and under my control.

WITNESS my hand and Seal of the City, as of this 15<sup>th</sup> day of February, 2002.

Mary Chaudoin  
CITY CLERK

(Seal of the City)

RECEIVED AND FILED

DATE March 1, 2002

JOHN Y. BROWN III  
SECRETARY OF STATE  
COMMONWEALTH OF KENTUCKY

BY K. Adkins

**AN ORDINANCE OF THE CITY OF ELIZABETHTOWN, KENTUCKY OF ITS  
INTENTION TO ANNEX 300 ACRES LOCATED ON  
NORTH BLACK BRANCH ROAD OWNED BY E'TOWN INDUSTRIAL FOUNDATION**

WHEREAS, the City of Elizabethtown, Kentucky, pursuant to KRS 81A.412 has received prior written consent of each owner of record of the land to be annexed, said written consent is attached hereto and made a part hereof as Exhibit "A",

BE IT ORDAINED by the City of Elizabethtown that from and after the passage, approval and publication of this Ordinance, that the City of Elizabethtown hereby annexes the following described real estate into the City of Elizabethtown, Kentucky for all legal purposes.

IT IS HEREBY FOUND that the real estate below is adjacent to and contiguous to the City's boundaries at the time the annexation proceeding is begun and which by reason of population density, commercial, industrial, institutional or governmental use of land or subdivision of land, is urban in character and suitable for development for urban purposes without unreasonable delay. It is further found that no part of the area proposed to be annexed hereby, is included within the boundary of another incorporated city.

The real estate that the City of Elizabethtown, Kentucky is annexing hereby into the City is more particularly described as set out in Exhibit "B" attached hereto and made a part hereof.


Attached hereto and made a part hereof is the map of the area being annexed into the City of Elizabethtown, Kentucky as Exhibit "C".

Based upon a recommendation from the Elizabethtown Planning and Zoning Commission and after a hearing on October 12, 1999, upon annexation, this property shall be zoned as Industrial (I).

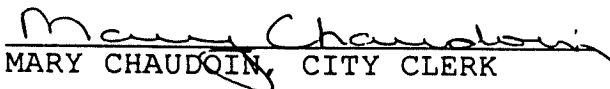
BE IT FURTHER ORDAINED that the Mayor of the City of Elizabethtown and/or his designatee be and he is authorized and directed to take all steps necessary to perfect this Ordinance.

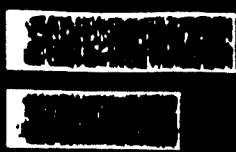
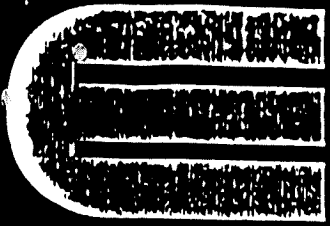
READ THE FIRST TIME this 18TH day of OCTOBER,  
1999.

READ, ADOPTED AND APPROVED this 1<sup>st</sup> day of  
November, 1999.

  
MAYOR DAVID WILLMOTH, JR.

ATTESTED TO:

  
MARY CHAUDOIN, CITY CLERK



ELIZABETHTOWN/HARDIN COUNTY  
INDUSTRIAL FOUNDATION, INC.  
A NOT FOR PROFIT ORGANIZATION

ORDINANCE NO. 38 - 1999, EXHIBIT A

Ed

July 2, 1999


Mayor David Willmoth  
City of Elizabethtown  
P. O. Box 550  
Elizabethtown, Kentucky 42702-0550

Dear Dave:

The Elizabethtown/Hardin County Industrial Foundation has purchased the 250-acre Gabbard Farm on Black Branch Road and 58.4 acres of the Hayden Farm also along Black Branch Road. This property is contiguous to the western boundary of the City and will be developed into an industrial park.

The Foundation requests that the City of Elizabethtown annex the above-mentioned property and zone it Industrial 1 - heavy industry. Please advise us of the process required, any action needed by the Foundation as well as the time frame.

Respectfully,

  
Gene Smith  
President

lw

JUL 13 1999

## LEGAL DESCRIPTION

THE FOLLOWING DESCRIBED PROPERTY IS TRACT 1 OF THE LEWIS & LAVERNE GABBARD PROPERTY (D.B. 268 PG. 311), SAID PROPERTY IS LOCATED ALONG THE NORTH SIDE OF BLACK BRANCH ROAD IN HARDIN COUNTY, KENTUCKY.

THE POINT OF BEGINNING IS AN EXISTING IRON PIN, SAID POINT IS LOCATED IN THE SOUTH RIGHT OF WAY OF THE PADUCAH & LOUISVILLE RAILROAD (66' RIGHT OF WAY) AND IS THE NORTHWEST CORNER OF LOT 4B-1 OF HUGHES COMMERCE CENTER SECTION 4 (P.C. 1 SHT. 1547), THENCE WITH THE WEST PROPERTY LINE OF SAID LOT 4B-1

South 47 degrees 32 minutes 13 seconds East for a distance of 774.57 feet TO AN EXISTING IRON PIN, SAID POINT IS THE SOUTHWEST CORNER OF LOT 4B-1 OF HUGHES COMMERCE CENTER SECTION 4 (P.C. 1 SHT. 1547) AND IS A POINT IN THE NORTH RIGHT OF WAY OF (OLD) BLACK BRANCH ROAD (30' RIGHT OF WAY), THENCE WITH THE NORTH RIGHT OF WAY OF (OLD) BLACK BRANCH ROAD FOR THREE CALLS

South 39 degrees 45 minutes 4 seconds West for a distance of 71.91 feet TO A POINT, THENCE

South 43 degrees 4 minutes 31 seconds West for a distance of 279.48 feet TO A POINT, THENCE

South 43 degrees 56 minutes 0 seconds West for a distance of 923.23 feet TO A SET IRON PIN WITH YELLOW "HAWKINS R.L.S. #2511" IDENTIFICATION CAP, SAID POINT IS LOCATED WHERE THE NORTH RIGHT OF WAY OF (OLD) BLACK RANCH ROAD AND THE NORTH RIGHT OF WAY OF (NEW) BLACK BRANCH ROAD (30' RIGHT OF WAY) INTERSECT, THENCE WITH THE NORTH RIGHT OF WAY OF (NEW) BLACK BRANCH ROAD FOR NINETEEN CALLS

South 75 degrees 11 minutes 28 seconds West for a distance of 73.58 feet TO A POINT, THENCE

South 75 degrees 53 minutes 42 seconds West for a distance of 24.27 feet TO A POINT, THENCE

South 72 degrees 31 minutes 24 seconds West for a distance of 54.51 feet TO A POINT, THENCE

South 72 degrees 25 minutes 34 seconds West for a distance of 20.87 feet TO A POINT, THENCE

South 71 degrees 49 minutes 54 seconds West for a distance of 53.51 feet TO A POINT, THENCE

South 72 degrees 36 minutes 40 seconds West for a distance of 148.26 feet TO A POINT, THENCE

South 72 degrees 17 minutes 35 seconds West for a distance of 296.02 feet TO A POINT, THENCE

South 72 degrees 13 minutes 40 seconds West for a distance of 282.26 feet TO A POINT, THENCE

South 71 degrees 46 minutes 23 seconds West for a distance of 303.38 feet TO A POINT, THENCE

South 72 degrees 23 minutes 39 seconds West for a distance of 302.49 feet TO A POINT, THENCE

South 72 degrees 6 minutes 14 seconds West for a distance of 300.26 feet TO A POINT, THENCE

South 72 degrees 28 minutes 33 seconds West for a distance of 311.15 feet TO A POINT, THENCE

South 72 degrees 15 minutes 3 seconds West for a distance of 296.93 feet TO A POINT, THENCE

South 71 degrees 34 minutes 51 seconds West for a distance of 49.90 feet TO A POINT, THENCE

South 72 degrees 17 minutes 53 seconds West for a distance of 54.64 feet TO A POINT, THENCE

South 77 degrees 51 minutes 49 seconds West for a distance of 52.17 feet TO A POINT, THENCE

South 87 degrees 12 minutes 25 seconds West for a distance of 53.36 feet TO A POINT, THENCE

North 87 degrees 32 minutes 20 seconds West for a distance of 55.73 feet TO A POINT, THENCE

North 86 degrees 48 minutes 7 seconds West for a distance of 31.58 feet TO A SET IRON PIN WITH YELLOW "HAWKINS R.L.S. # 2511" IDENTIFICATION CAP, SAID POINT IS A POINT IN THE NORTH RIGHT OF WAY OF (NEW) BLACK BRANCH ROAD (30' R/W) AND IS A CORNER TO THE MARION (KENNETH) HAYDEN PROPERTY (D.B. 707 PG. 332), THENCE WITH SAID HAYDEN PROPERTY

North 16 degrees 22 minutes 45 seconds West for a distance of 431.87 feet TO A TO A SET IRON PIN WITH YELLOW "HAWKINS R.L.S. # 2511" IDENTIFICATION CAP, SAID POINT IS A POINT IN THE SOUTH RIGHT OF WAY OF THE PADUCAH AND LOUISVILLE RAILROAD (66' RIGHT OF WAY), THENCE WITH THE SOUTH RIGHT OF WAY OF THE PADUCAH AND LOUISVILLE RAILROAD FOR FIFTEEN CALLS

North 67 degrees 52 minutes 37 seconds East for a distance of 1138.11 feet TO A SET IRON PIN WITH YELLOW "HAWKINS R.L.S. # 2511" IDENTIFICATION CAP, THENCE

North 66 degrees 44 minutes 15 seconds East for a distance of 40.24 feet TO A POINT, THENCE

North 66 degrees 48 minutes 25 seconds East for a distance of 55.05 feet TO A POINT, THENCE

North 65 degrees 8 minutes 9 seconds East for a distance of 50.39 feet TO A POINT, THENCE

North 64 degrees 24 minutes 18 seconds East for a distance of 55.90 feet TO A POINT, THENCE

North 63 degrees 17 minutes 47 seconds East for a distance of 55.85 feet TO A POINT, THENCE

North 62 degrees 6 minutes 59 seconds East for a distance of 57.92 feet TO A POINT, THENCE

North 61 degrees 20 minutes 53 seconds East for a distance of 51.31 feet TO A POINT, THENCE

North 59 degrees 53 minutes 18 seconds East for a distance of 53.24 feet TO A POINT, THENCE

North 58 degrees 41 minutes 3 seconds East for a distance of 51.35 feet TO A POINT, THENCE

North 57 degrees 30 minutes 2 seconds East for a distance of 53.75 feet TO A POINT, THENCE

North 56 degrees 10 minutes 36 seconds East for a distance of 59.31 feet TO A POINT, THENCE

North 54 degrees 48 minutes 33 seconds East for a distance of 50.24 feet TO A POINT, THENCE

North 53 degrees 51 minutes 17 seconds East for a distance of 79.06 feet TO A SET IRON PIN WITH YELLOW "HAWKINS R.L.S. # 2511" IDENTIFICATION CAP, THENCE

North 53 degrees 14 minutes 50 seconds East for a distance of 1742.97 feet TO THE TRUE POINT OF BEGINNING.

Together with and subject to covenants, easements and restrictions of record.

Said property contains 62.031 acres per physical survey by Hawkins Engineering. (Ky. RLS #2511).

C:\MINDOWS\PERSONAL\GABLE01

## LEGAL DESCRIPTION

THE FOLLOWING DESCRIBED PROPERTY IS TRACT 2 OF THE LEWIS & LAYERNE GABBARD PROPERTY (D.B. 268 PG. 311), SAID PROPERTY IS LOCATED ALONG THE SOUTH SIDE OF BLACK BRANCH ROAD IN HARDIN COUNTY, KENTUCKY.

THE POINT OF BEGINNING IS AN EXISTING WOOD FENCE POST, SAID POINT IS THE NORTHWEST CORNER OF LOT 41 (ALTEC) OF HUGHES COMMERCE CENTER SECTION 10 (P.C. 1 SHT. 1961) AND IS THE NORTHEAST CORNER OF PARCEL THREE TRACT I OF THE GUY WILLIAMS, LLC. PROPERTY (D.B. 822 PG. 504), THENCE WITH THE NORTH PROPERTY LINE OF SAID WILLIAMS PROPERTY FOR TWO CALLS

South 44 degrees 20 minutes 31 seconds West for a distance of 247.50 feet TO A SET IRON PIN WITH YELLOW "HAWKINS R.L.S. # 2511" IDENTIFICATION CAP, OLD MONUMENT FROM GUY WILLIAMS, LLC. (D.B. 822 PG. 504) "WHERE A BLACK JACK STOOD), THENCE

South 42 degrees 35 minutes 0 seconds West for a distance of 3593.26 feet TO A SET IRON PIN WITH YELLOW "HAWKINS R.L.S. # 2511" IDENTIFICATION CAP, SAID POINT IS LOCATED NORTH 42 DEGREES 35 MINUTES 00 SECONDS EAST A DISTANCE OF 17.22 FEET FROM AN EXISTING WOOD FENCE POST, SAID SET IRON PIN WITH CAP IS REFERENCED AS BEING THE SOUTHEAST CORNER OF A 16.50 FOOT WIDE PASSWAY FOR THE BENEFIT OF GUY WILLIAMS, LLC., THENCE CONTINUING WITH PARCEL THREE TRACT I OF THE GUY WILLIAMS, LLC. PROPERTY (D.B. 802 PG. 504) ALONG THE NORTHEAST SIDE OF A 16.50 FOOT PASSWAY

North 37 degrees 26 minutes 42 seconds West for a distance of 1686.60 feet TO A SET IRON PIN WITH YELLOW "HAWKINS R.L.S. # 2511" IDENTIFICATION CAP, SAID POINT IS THE NORTHEAST CORNER OF SAID 16.50 FOOT WIDE PASSWAY AND IS A POINT IN THE SOUTH RIGHT OF WAY OF BLACK BRANCH ROAD (30' RIGHT OF WAY); THENCE WITH THE SOUTH RIGHT OF WAY OF BLACK BRANCH ROAD FOR FORTY-THREE CALLS

North 14 degrees 31 minutes 56 seconds East for a distance of 56.03 feet TO A POINT, THENCE

North 17 degrees 44 minutes 48 seconds East for a distance of 52.11 feet TO A POINT, THENCE

North 27 degrees 21 minutes 40 seconds East for a distance of 49.61 feet TO A POINT, THENCE

North 38 degrees 2 minutes 25 seconds East for a distance of 49.93 feet TO A POINT, THENCE

North 42 degrees 0 minutes 55 seconds East for a distance of 50.37 feet TO A POINT. THENCE



North 42 degrees 55 minutes 35 seconds East for a distance of 245.65 feet TO A POINT, THENCE  
North 42 degrees 43 minutes 8 seconds East for a distance of 239.85 feet TO A POINT, THENCE  
North 42 degrees 35 minutes 58 seconds East for a distance of 267.05 feet TO A POINT, THENCE  
North 42 degrees 45 minutes 1 seconds East for a distance of 294.84 feet TO A POINT, THENCE  
North 42 degrees 50 minutes 45 seconds East for a distance of 293.99 feet TO A POINT, THENCE  
North 42 degrees 55 minutes 0 seconds East for a distance of 282.17 feet TO A POINT, THENCE  
North 42 degrees 45 minutes 29 seconds East for a distance of 293.30 feet TO A POINT, THENCE  
North 42 degrees 44 minutes 50 seconds East for a distance of 289.03 feet TO A POINT, THENCE  
North 42 degrees 43 minutes 4 seconds East for a distance of 300.55 feet TO A POINT, THENCE  
North 42 degrees 57 minutes 45 seconds East for a distance of 214.42 feet TO A POINT, THENCE  
North 41 degrees 55 minutes 11 seconds East for a distance of 37.84 feet TO A POINT, THENCE  
North 42 degrees 57 minutes 21 seconds East for a distance of 123.87 feet TO A POINT, THENCE  
North 42 degrees 59 minutes 10 seconds East for a distance of 55.54 feet TO A POINT, THENCE  
North 47 degrees 50 minutes 24 seconds East for a distance of 98.70 feet TO A POINT, THENCE  
North 73 degrees 14 minutes 39 seconds East for a distance of 47.12 feet TO A POINT, THENCE  
North 88 degrees 50 minutes 31 seconds East for a distance of 50.12 feet TO A POINT, THENCE  
South 88 degrees 15 minutes 35 seconds East for a distance of 51.77 feet TO A POINT, THENCE  
South 87 degrees 34 minutes 56 seconds East for a distance of 52.47 feet TO A POINT, THENCE  
South 86 degrees 41 minutes 2 seconds East for a distance of 55.59 feet TO A POINT, THENCE  
South 86 degrees 48 minutes 7 seconds East for a distance of 53.11 feet TO A POINT, THENCE  
South 87 degrees 32 minutes 20 seconds East for a distance of 57.30 feet TO A POINT, THENCE  
North 87 degrees 12 minutes 25 seconds East for a distance of 57.18 feet TO A POINT, THENCE

North 77 degrees 51 minutes 49 seconds East for a distance of 56.08 feet TO A POINT, THENCE  
 North 72 degrees 17 minutes 53 seconds East for a distance of 56.29 feet TO A POINT, THENCE  
 North 71 degrees 34 minutes 51 seconds East for a distance of 49.91 feet TO A POINT, THENCE  
 North 72 degrees 15 minutes 3 seconds East for a distance of 296.70 feet TO A POINT, THENCE  
 North 72 degrees 28 minutes 33 seconds East for a distance of 311.18 feet TO A POINT, THENCE  
 North 72 degrees 6 minutes 14 seconds East for a distance of 300.28 feet TO A POINT, THENCE  
 North 72 degrees 23 minutes 39 seconds East for a distance of 302.57 feet TO A POINT, THENCE  
 North 71 degrees 46 minutes 23 seconds East for a distance of 303.43 feet TO A POINT, THENCE  
 North 72 degrees 13 minutes 40 seconds East for a distance of 282.13 feet TO A POINT, THENCE  
 North 72 degrees 17 minutes 35 seconds East for a distance of 295.92 feet TO A POINT, THENCE  
 North 72 degrees 36 minutes 40 seconds East for a distance of 148.38 feet TO A POINT, THENCE  
 North 71 degrees 49 minutes 54 seconds East for a distance of 53.56 feet TO A POINT, THENCE  
 North 72 degrees 25 minutes 34 seconds East for a distance of 20.69 feet TO A POINT, THENCE  
 North 72 degrees 31 minutes 24 seconds East for a distance of 53.61 feet TO A POINT, THENCE  
 North 75 degrees 47 minutes 16 seconds East for a distance of 25.06 feet TO A POINT, THENCE  
 North 74 degrees 43 minutes 24 seconds East for a distance of 57.82 feet TO A SET IRON PIN WITH YELLOW "HAWKINS R.L.S. #2511" IDENTIFICATION CAP, SAID POINT IS A POINT IN THE SOUTH RIGHT OF WAY OF BLACK BRANCH ROAD (30' RIGHT OF WAY) AND IS A CORNER TO THE ELIZABETHTOWN INDUSTRIAL FOUNDATION PROPERTY (D.B. 308 PG. 250), THENCE WITH THE ELIZABETHTOWN INDUSTRIAL FOUNDATION PROPERTY FOR THREE CALLS  
 South 43 degrees 9 minutes 3 seconds East for a distance of 23.18 feet TO AN EXISTING IRON PIN, THENCE  
 South 43 degrees 9 minutes 3 seconds East for a distance of 153.47 feet TO AN EXISTING IRON PIN, THENCE WITH THE ELIZABETHTOWN INDUSTRIAL FOUNDATION PROPERTY (D.B. 308 PG. 250) AND CONTINUING WITH THE NORTH PROPERTY LINE OF LOT 41 (ALTEC) OF HUGHES COMMERCE CENTER SECTION 10 (P.C. 1-SHT. 1961)  
 South 44 degrees 20 minutes 31 seconds West for a distance of 2276.24 feet TO THE TRUE POINT OF BEGINNING.

Together with and subject to covenants, easements and restrictions of record.

Said property contains 186.7236 acres per physical survey by Hawkins Engineering. (Ky. RLS #2511).

C:\WINDOWS\PERSONAL\GABLEG2

## LEGAL DESCRIPTION

THE FOLLOWING DESCRIBED PROPERTY IS A PORTION OF THE JACOB B. HAYDEN, JR. & MARION K. HAYDEN PROPERTY (D.B. 299 PG. 152), SAID PROPERTY IS LOCATED ALONG THE NORTH SIDE OF BLACK BRANCH ROAD IN HARDIN COUNTY, KENTUCKY.

THE POINT OF BEGINNING IS AN EXISTING IRON PIN WITH YELLOW "HAWKINS R.L.S. # 2511" IDENTIFICATION CAP, SAID POINT IS LOCATED IN THE NORTH RIGHT OF WAY, OF BLACK BRANCH ROAD (30' RIGHT OF WAY), AND IS THE SOUTHWEST CORNER OF TRACT 1 OF THE LEWIS & Laverne GABBARD PROPERTY (D.B. 268 PG. 311), THENCE WITH THE NORTH RIGHT OF WAY OF BLACK BRANCH ROAD FOR TWENTY-FIVE CALLS

North 86 degrees 48 minutes 7 seconds West for a distance of 21.31 feet TO A POINT, THENCE

North 86 degrees 41 minutes 2 seconds West for a distance of 55.79 feet TO A POINT, THENCE

North 87 degrees 34 minutes 56 seconds West for a distance of 52.89 feet TO A POINT, THENCE

North 88 degrees 15 minutes 35 seconds West for a distance of 52.70 feet TO A POINT, THENCE

South 88 degrees 50 minutes 31 seconds West for a distance of 54.99 feet TO A POINT, THENCE

South 73 degrees 14 minutes 39 seconds West for a distance of 58.00 feet TO A POINT, THENCE

South 47 degrees 50 minutes 24 seconds West for a distance of 106.74 feet TO A POINT, THENCE

South 42 degrees 59 minutes 10 seconds West for a distance of 56.82 feet TO A POINT, THENCE

South 42 degrees 57 minutes 21 seconds West for a distance of 124.15 feet TO A POINT, THENCE

South 41 degrees 55 minutes 11 seconds West for a distance of 37.84 feet TO A POINT, THENCE

South 42 degrees 57 minutes 45 seconds West for a distance of 214.21 feet TO A POINT, THENCE

South 42 degrees 43 minutes 4 seconds West for a distance of 300.61 feet TO A POINT, THENCE

South 42 degrees 44 minutes 50 seconds West for a distance of 289.01 feet TO A POINT, THENCE

South 42 degrees 45 minutes 29 seconds West for a distance of 293.26 feet TO A POINT, THENCE

South 42 degrees 55 minutes 0 seconds West for a distance of 282.14 feet TO A POINT, THENCE

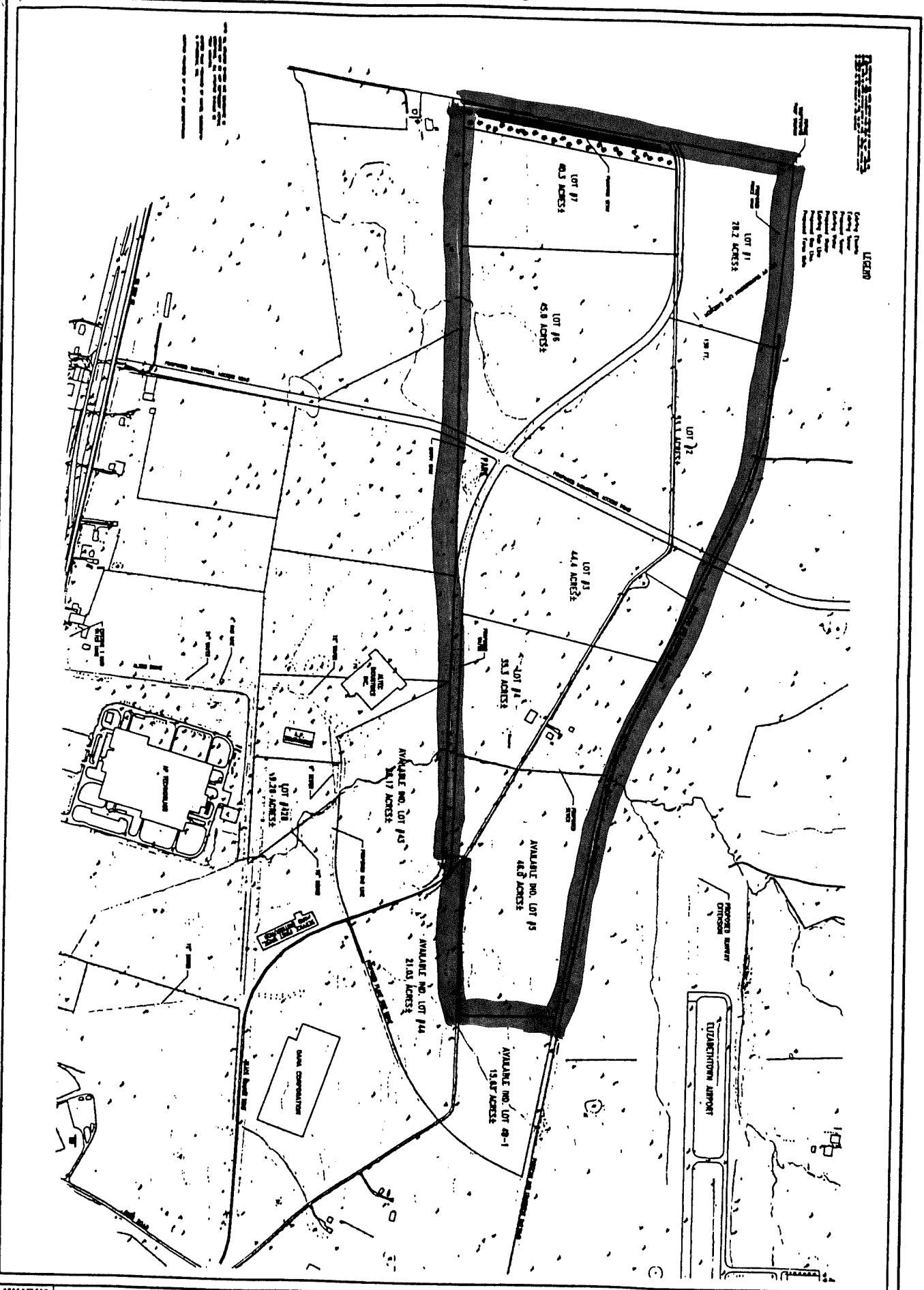
South 42 degrees 50 minutes 45 seconds West for a distance of 294.03 feet TO A POINT, THENCE  
 South 42 degrees 45 minutes 1 seconds West for a distance of 294.91 feet TO A POINT, THENCE  
 South 42 degrees 35 minutes 58 seconds West for a distance of 267.06 feet TO A POINT, THENCE  
 South 42 degrees 43 minutes 8 seconds West for a distance of 239.77 feet TO A POINT, THENCE  
 South 42 degrees 55 minutes 35 seconds West for a distance of 245.83 feet TO A POINT, THENCE  
 South 42 degrees 0 minutes 55 seconds West for a distance of 51.65 feet TO A POINT, THENCE  
 South 38 degrees 2 minutes 25 seconds West for a distance of 53.77 feet TO A POINT, THENCE  
 South 27 degrees 21 minutes 40 seconds West for a distance of 54.93 feet TO A POINT, THENCE  
 South 17 degrees 44 minutes 48 seconds West for a distance of 55.49 feet TO A POINT, THENCE  
 South 14 degrees 29 minutes 14 seconds West for a distance of 50.82 feet TO A SET IRON PIN WITH YELLOW "HAWKINS R.L.S. #2511" IDENTIFICATION CAP, SAID POINT IS LOCATED IN THE NORTH RIGHT OF WAY OF BLACK BRANCH ROAD (30' RIGHT OF WAY), AND IS THE SOUTHEAST CORNER OF THE LEROY & ANNA HAZELIP PROPERTY (D.B. 695 PG 191), THENCE WITH THE EAST PROPERTY LINE OF SAID HAZELIP PROPERTY  
 North 37 degrees 32 minutes 45 seconds West for a distance of 1005.81 feet TO A SET IRON PIN WITH YELLOW "HAWKINS R.L.S. # 2511" IDENTIFICATION CAP, SAID POINT IS THE NORTHEAST CORNER OF THE LEROY & ANNA HAZELIP PROPERTY (D.B. 695 PG. 191), IS LOCATED IN THE SOUTH RIGHT OF WAY OF THE PADUCAH & LOUISVILLE RAILROAD, (66' RIGHT OF WAY) AND IS REFERENCED AS BEING LOCATED SOUTH 37 DEGREES 32 MINUTES 45 SECONDS EAST A DISTANCE OF 66.11 FEET FROM AN EXISTING IRON PIPE LOCATED IN THE NORTH RIGHT OF WAY OF SAID RAILROAD, SAID IRON PIPE IS THE SOUTHEAST CORNER OF THE JACOB B. HAYDEN, JR. & MARION K. HAYDEN PROPERTY (D.B. 790 PG. 278), THENCE WITH THE SOUTH RIGHT OF WAY OF THE PADUCAH & LOUISVILLE RAILROAD FOR FIFTEEN CALLS  
 North 47 degrees 51 minutes 19 seconds East for a distance of 1859.77 feet TO A SET IRON PIN WITH YELLOW "HAWKINS R.L.S. # 2511" IDENTIFICATION CAP, THENCE  
 North 48 degrees 50 minutes 1 seconds East for a distance of 108.70 feet TO A POINT, THENCE  
 North 50 degrees 25 minutes 39 seconds East for a distance of 85.49 feet TO A POINT, THENCE  
 North 52 degrees 22 minutes 7 seconds East for a distance of 73.30 feet TO A POINT, THENCE

North 54 degrees 12 minutes 39 seconds East for a distance of 93.62 feet TO A POINT, THENCE  
North 56 degrees 1 minutes 34 seconds East for a distance of 90.10 feet TO A POINT, THENCE  
North 57 degrees 46 minutes 59 seconds East for a distance of 79.17 feet TO A POINT, THENCE  
North 59 degrees 29 minutes 51 seconds East for a distance of 100.12 feet TO A POINT, THENCE  
North 61 degrees 30 minutes 8 seconds East for a distance of 104.05 feet TO A POINT, THENCE  
North 63 degrees 20 minutes 34 seconds East for a distance of 77.46 feet TO A POINT, THENCE  
North 65 degrees 3 minutes 42 seconds East for a distance of 83.40 feet TO A POINT, THENCE  
North 66 degrees 34 minutes 37 seconds East for a distance of 73.44 feet TO A POINT, THENCE  
North 67 degrees 30 minutes 36 seconds East for a distance of 69.91 feet TO A SET IRON PIN WITH YELLOW "HAWKINS R.L.S. # 2511" IDENTIFICATION CAP, THENCE  
North 67 degrees 54 minutes 57 seconds East for a distance of 656.34 feet TO A POINT, THENCE  
North 67 degrees 52 minutes 37 seconds East for a distance of 127.04 feet TO AN EXISTING IRON PIN WITH YELLOW "HAWKINS R.L.S. # 2511" IDENTIFICATION CAP, SAID POINT IS A POINT IN THE SOUTH RIGHT OF WAY OF THE PADUCAH & LOUISVILLE RAILROAD (66' RIGHT OF WAY) AND IS THE NORTHWEST CORNER OF TRACT 1 OF THE LEWIS & LAVERNE GABBARD PROPERTY (D.B. 268 PG. 311), THENCE WITH THE WEST PROPERTY LINE OF SAID GABBARD PROPERTY  
South 16 degrees 22 minutes 45 seconds East for a distance of 431.87 feet TO THE TRUE POINT OF BEGINNING.

Together with and subject to covenants, easements and restrictions of record.

Said property contains 58.403 acres per physical survey by Hawkins Engineering. (Ky. RLS #2511).

SHIRLEY DOWNS PERSONAL & PHAYDEN LEGAL



Scale: 1" = 700'  
 DATE: 10-13-99  
 DRAWN BY: [Name]  
 CHECKED BY: [Name]  
 APPROVED BY: [Name]

**T.J. PATTERSON IND. PARK  
 PROPOSED MASTER PLAN  
 ELIZABETHTOWN, KY**

NO.	DESCRIPTION	DATE	BY
1	PRELIMINARY PLAN	10-13-99	[Name]
2	FINAL PLAN	10-13-99	[Name]

City of **ELIZABETHTOWN**  
 Engineering Department