

RECEIVED AND FILED
DATE December 3, 2018

CITY OF GEORGETOWN
ORDINANCE NO. 18-019

ALISON LUNDERGAN GRIMES
SECRETARY OF STATE
COMMONWEALTH OF KENTUCKY
EX Hande Adkinson

AN ORDINANCE ANNEXING INTO THE CITY OF GEORGETOWN CERTAIN REAL PROPERTY CONTAINING 59.83 ACRES LOCATED AT OR AROUND THE INTERSECTION OF MCCLELLAND CIRCLE AND LEXINGTON ROAD IN SCOTT COUNTY, KENTUCKY.

SPONSOR: Marvin Thompson

WHEREAS, Lewis P. Bradley, Rosemary M. Bradley, Ford Farm Partnership I, Ltd., and Trust FBO Alice B. Southworth, all with an address of 515 Sheffield Road, Hopkinsville, Kentucky 42240 (collectively "Grantors"), property owners of record of the tract of land to be annexed, have given prior written consent to the annexation of the Property; and

WHEREAS, the Property is contiguous to the existing city limits of the City of Georgetown and is urban in character and suitable for development for urban purposes without unreasonable delay.

NOW, THEREFORE, Be it ordained by the City of Georgetown, Kentucky:

SECTION ONE

Pursuant to KRS 81A.412, the Georgetown City Council hereby annexes the following unincorporated area of Scott County into the City limits of the City of Georgetown:

A TRACT OR PARCEL OF LAND SITUATED ON THE SOUTH OF MCCLELLAND CIRCLE APPROXIMATELY 0.6 MILES WEST OF THE INTERSECTION OF MCCLELLAND CIRCLE AND LEXINGTON ROAD (U.S. 25) AND BEING MORE FULLY DESCRIBED AND BOUNDED AS FOLLOWS:

BEGINNING AT A POINT in the southern right of way of McClellan Circle, said point also being the northwest corner of McClelland Circle Partners, LLC (known as 252 McClelland Circle); thence with the western line of McClelland Circle Partners, LLC South 24 Degrees 24 Minutes 26 Seconds West a distance of 1183.65 feet to a point; thence leaving said western line South 52 Degrees 16 Minutes 11 Seconds West a distance of 104.04 feet to a point; North 70 Degrees 39 Minutes 08 Seconds West a distance of 176.74 feet to a point; thence North 36 Degrees 35 Minutes 05 Seconds West a distance of 73.95 feet to a point; thence North 40 Degrees 03 Minutes 33 Seconds West a distance of 50.43 feet to a point; thence North 73 Degrees 10 Minutes 40 Seconds West a distance of 27.31 feet to a point; thence South 89 Degrees 19 Minutes 44 Seconds West a distance of 62.81 feet to a point; thence North 75 Degrees 37 Minutes 22 Seconds West a distance of 60.04 feet to a point; thence North 68 Degrees 28 Minutes 28 Seconds West a distance of 60.23 feet to a point; thence North 80 Degrees 37 Minutes 10 Seconds West a distance of 60.47 feet to a point; thence North 72 Degrees 10 Minutes 23 Seconds West a distance of 60.02 feet to a point; thence North 65 Degrees 05

Minutes 52 Seconds West a distance of 60.64 feet to a point; thence North 73 Degrees 06 Minutes 46 Seconds West a distance of 60.00 feet to a point; thence North 83 Degrees 57 Minutes 45 Seconds West a distance of 61.02 feet to a point; thence North 85 Degrees 22 Minutes 13 Seconds West a distance of 81.43 feet to a point; thence North 56 Degrees 45 Minutes 29 Seconds West a distance of 98.95 feet to a point; thence North 78 Degrees 07 Minutes 09 Seconds West a distance of 76.82 feet to a point; thence South 00 Degrees 58 Minutes 38 Seconds East a distance of 16.24 feet to a point; thence South 82 Degrees 18 Minutes 57 Seconds West a distance of 136.71 feet to a point; thence South 89 Degrees 37 Minutes 09 Seconds West a distance of 134.57 feet to a point; thence North 75 Degrees 26 Minutes 11 Seconds West a distance of 213.22 feet to a point in the eastern line of Dudley Jennings; thence with the eastern line of Jennings North 24 Degrees 58 Minutes 42 Seconds East a distance of 804.13 feet to a point; thence leaving the eastern line of Jennings North 71 Degrees 08 Minutes 02 Seconds East a distance of 224.50 feet to a point; thence North 50 Degrees 52 Minutes 44 Seconds East a distance of 170.11 feet to a point; thence North 04 Degrees 42 Minutes 30 Seconds East a distance of 88.97 feet to a point; thence North 51 Degrees 06 Minutes 06 Seconds East a distance of 128.99 feet to a point; thence North 23 Degrees 18 Minutes 00 Seconds West a distance of 109.52 feet to a point; thence South 57 Degrees 03 Minutes 52 Seconds West a distance of 339.75 feet to a point in the eastern line of Jennings; thence with the eastern line of Jennings for the following three (3) calls: North 24 Degrees 58 Minutes 42 Seconds East a distance of 377.49 feet to a point; North 58 Degrees 43 Minutes 09 Seconds East a distance of 289.75 feet to a point; thence North 59 Degrees 17 Minutes 20 Seconds East a distance of 272.90 feet to a point in the southwestern corner of the GMWSS property; thence with the southern line of the GMWSS property South 31 Degrees 21 Minutes 37 Seconds East a distance of 59.30 feet to a point in the southeastern corner of the GMWSS property; thence with the eastern line of GMWSS property for the following three (3) calls: North 58 Degrees 38 Minutes 15 Seconds East a distance of 23.95 feet to a point; thence North 44 Degrees 32 Minutes 30 Seconds East a distance of 37.12 feet to a point; thence North 58 Degrees 38 Minutes 19 Seconds East a distance of 70.01 feet to point in the northeastern corner of the GMWSS property; thence with the northern line of the GMWSS property North 29 Degrees 22 Minutes 06 Seconds West a distance of 48.80 feet to a point in the eastern line Dudley Jennings; thence with Jennings North 59 Degrees 17 Minutes 20 Seconds East a distance of 52.16 feet to a point in the southern right of way of McClelland Circle; thence with said right of way for the following five (5) calls: South 48 Degrees 11 Minutes 58 Seconds East a distance of 62.84 feet to a point; thence South 52 Degrees 21 Minutes 53 Seconds East a distance of 101.12 feet to a point; thence South 42 Degrees 32 Minutes 38 Seconds East a distance of 222.06 feet to a point; thence South 45 Degrees 28 Minutes 14 Seconds East a distance of 350.14 feet to a point; thence South 44 Degrees 52 minutes 48 Seconds East a distance of 547.74 feet to the **POINT OF BEGINNING**.

The above described parcel contains 59.83 acres.

SECTION TWO

If any section, subsection, sentence, clause or phrase of this ordinance is held unconstitutional or otherwise invalid, such infirmity shall not affect the validity of the remaining portions of this ordinance.

SECTION THREE

All ordinances or parts of ordinances in conflict with this ordinance are hereby repealed.

SECTION FOUR

This ordinance shall take effect after its passage and publication according to law.

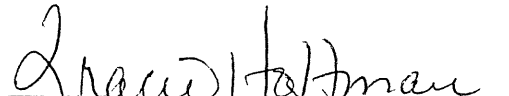
PUBLICLY INTRODUCED AND READ FIRST TIME: November 12, 2018

PUBLICLY READ SECOND TIME AND PASSED: November 26, 2018

APPROVED:


Tom Prather, Mayor

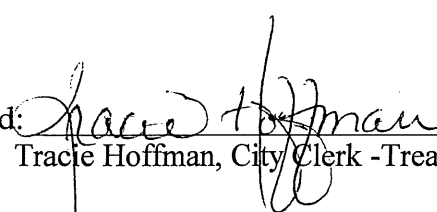
ATTEST:


Tracie Hoffman, City Clerk

STATE OF KENTUCKY)
(SCT.
COUNTY OF SCOTT)

I, Clerk of the City of Georgetown, Kentucky, and as such custodian of the Seal and all the records of or pertaining to said City, do hereby certify the foregoing to be a true and accurate copy of ordinance number 18-0019.

IN TESTIMONY WHEREOF, witness my hand, the Seal of said City on this the 30th day of November 2018.

Signed: 
Tracie Hoffman, City Clerk -Treasurer

CITY OF GEORGETOWN
ORDINANCE NO. 2018-019

AN ORDINANCE ANNEXING INTO THE CITY OF GEORGETOWN CERTAIN REAL PROPERTY CONTAINING 59.83 ACRES LOCATED AT OR AROUND THE INTERSECTION OF MCCLELLAND CIRCLE AND LEXINGTON ROAD IN SCOTT COUNTY, KENTUCKY.

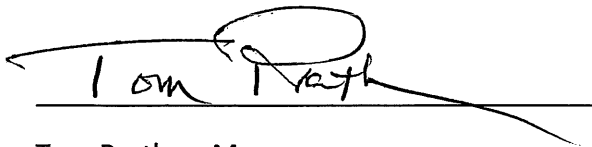
SUMMARY

1. Annexes into Georgetown city limits, by written consent of the property owners in accordance with KRS 81A.412, 59.83 acres of property located at or around the intersection of McClelland Circle and Lexington Road in Scott County, Kentucky.
2. Provides for an effective date upon passage and publication.

PUBLICLY INTRODUCED AND READ FIRST TIME: November 12, 2018

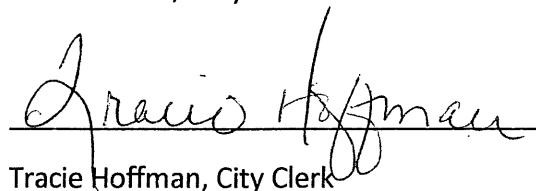
PUBLICLY READ SECOND TIME AND PASSED: November 26, 2018

APPROVED:



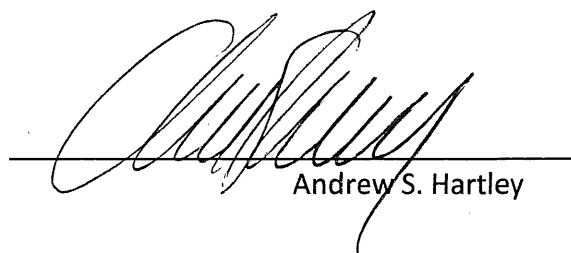
Tom Prather, Mayor

ATTEST:



Tracie Hoffman, City Clerk

I, Andrew S. Hartley, hereby certify I am an Attorney licensed to practice law in the Commonwealth of Kentucky. My office is located at 100 North Court Street, Georgetown, Kentucky 40324. I further certify the foregoing Summary of Ordinance 18-019 of the City of Georgetown, Kentucky, was prepared in accordance with the requirements of KRS 83A.060(9), and is a true and accurate summary of the contents of said Ordinance.



Andrew S. Hartley

EA Partners, PLLC



CIVIL ENGINEERS • LAND SURVEYORS • LANDSCAPE ARCHITECTS
3111 WALL STREET
LEXINGTON, KENTUCKY 40513
PHONE (859) 296-9889
WWW.EAPARTNERS.COM



[Handwritten Signature]
11/14/18

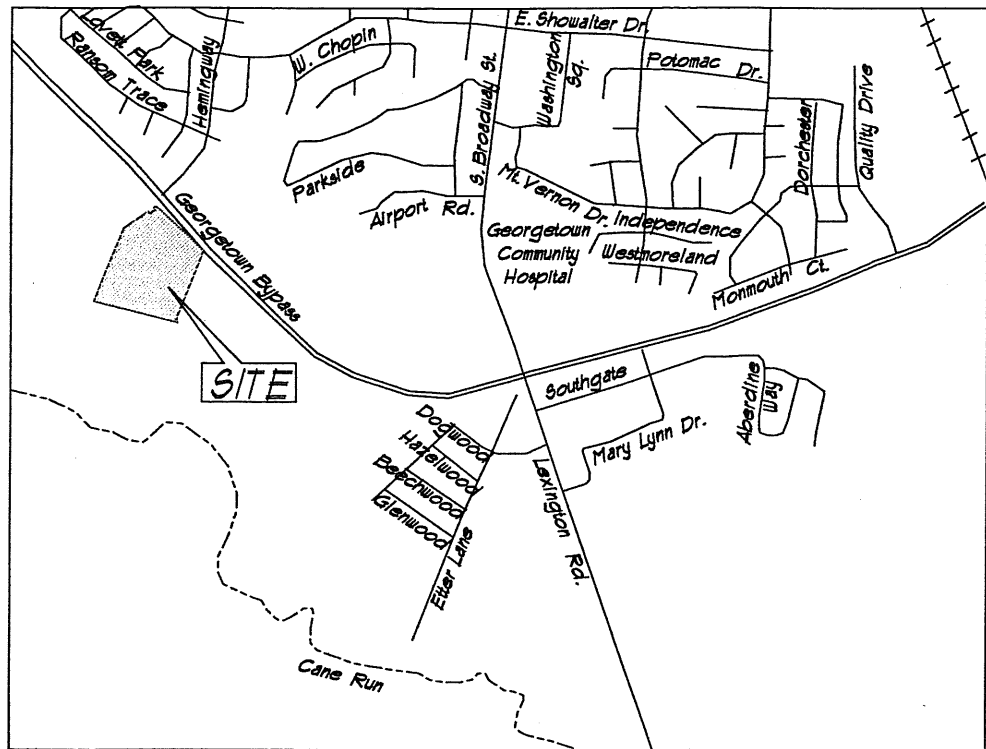
BRADLEY - FORD PROPERTY
(a portion of)
McClelland Circle
Annexation Legal Description
Georgetown Scott County, Kentucky

A TRACT OR PARCEL OF LAND SITUATED ON THE SOUTH OF McCLELLAND CIRCLE APPROXIMATELY 0.6 MILES WEST OF THE INTERSECTION OF McCLELLAND CIRCLE AND LEXINGTON ROAD (U.S. 25) AND BEING MORE FULLY DESCRIBED AND BOUNDED AS FOLLOWS:

BEGINNING AT A POINT in the southern right of way of McClellan Circle, said point also being the northwest corner of McClelland Circle Partners, LLC (known as 252 McClelland Circle); thence with the western line of McClelland Circle Partners, LLC South 24 Degrees 24 Minutes 26 Seconds West a distance of 1183.65 feet to a point; thence leaving said western line South 52 Degrees 16 Minutes 11 Seconds West a distance of 104.04 feet to a point; North 70 Degrees 39 Minutes 08 Seconds West a distance of 176.74 feet to a point; thence North 36 Degrees 35 Minutes 05 Seconds West a distance of 73.95 feet to a point; thence North 40 Degrees 03 Minutes 33 Seconds West a distance of 50.43 feet to a point; thence North 73 Degrees 10 Minutes 40 Seconds West a distance of 27.31 feet to a point; thence South 89 Degrees 19 Minutes 44 Seconds West a distance of 62.81 feet to a point; thence North 75 Degrees 37 Minutes 22 Seconds West a distance of 60.04 feet to a point; thence North 68 Degrees 28 Minutes 28 Seconds West a distance of 60.23 feet to a point; thence North 80 Degrees 37 Minutes 10 Seconds West a distance of 60.47 feet to a point; thence North 72 Degrees 10 Minutes 23 Seconds West a distance of 60.02 feet to a point; thence North 65 Degrees 05 Minutes 52 Seconds West a distance of 60.64 feet to a point; thence North 73 Degrees 06 Minutes 46 Seconds West a distance of 60.00 feet to a point; thence North 83 Degrees 57 Minutes 45 Seconds West a distance of 61.02 feet to a point; thence North 85 Degrees 22 Minutes 13 Seconds West a distance of 61.32 feet to a point; thence North 75 degrees 25 Minutes 06 Seconds West a distance of 81.43 feet to a point; thence North 56 Degrees 45 Minutes 29 Seconds West a distance of 98.95 feet to a point; thence North 78 Degrees 07 Minutes 09 Seconds West a distance of 76.82 feet to a point; thence South 00 Degrees 58 Minutes 38 Seconds East a distance of 16.24 feet to a point; thence South 82 Degrees 18 Minutes 57 Seconds West a distance of 136.71 feet to a point; thence South 89 Degrees 37 Minutes 09 Seconds West a distance of 134.57 feet to a point; thence North 75 Degrees 26 Minutes 11 Seconds West a distance of 213.22 feet to a point in the eastern line of Dudley Jennings; thence with the eastern line of Jennings North 24

Degrees 58 Minutes 42 Seconds East a distance of 804.13 feet to a point; thence leaving the eastern line of Jennings North 71 Degrees 08 Minutes 02 Seconds East a distance of 224.50 feet to a point; thence North 50 Degrees 52 Minutes 44 Seconds East a distance of 170.11 feet to a point; thence North 04 Degrees 42 Minutes 30 Seconds East a distance of 88.97 feet to a point; thence North 51 Degrees 06 Minutes 06 seconds East a distance of 128.99 feet to a point; thence North 23 Degrees 18 Minutes 00 Seconds West a distance of 109.52 feet to a point; thence South 57 Degrees 03 Minutes 52 Seconds West a distance of 339.75 feet to a point in the eastern line of Jennings; thence with the eastern line of Jennings for the following three (3) calls: North 24 Degrees 58 Minutes 42 Seconds East a distance of 377.49 feet to a point; North 58 Degrees 43 Minutes 09 Seconds East a distance of 289.75 feet to a point; thence North 59 Degrees 17 Minutes 20 Seconds East a distance of 272.90 feet to a point in the southwestern corner of the GMWSS property; thence with the southern line of the GMWSS property South 31 Degrees 21 Minutes 37 Seconds East a distance of 59.30 feet to a point in the southeastern corner of GMWSS property; thence with the eastern line of GMWSS property for the following three (3) calls: North 58 Degrees 38 minutes 15 Seconds East a distance of 23.95 feet to point; thence North 44 Degrees 32 Minutes 30 Seconds East a distance of 37.12 feet to a point; thence North 58 Degrees 38 Minutes 19 Seconds East a distance of 70.01 feet to point in the northeastern corner of the GMWSS property; thence with the northern line of the GMWSS property North 29 Degrees 22 Minutes 06 Seconds West a distance of 48.80 feet to a point in the eastern line Dudley Jennings; thence with Jennings North 59 Degrees 17 Minutes 20 Seconds East a distance of 52.16 feet to a point in the southern right of way of McClelland Circle; thence with said right of way for the following five (5) calls South 48 Degrees 11 Minutes 58 Seconds East a distance of 62.84 feet to a point; thence South 52 Degrees 21 Minutes 53 Seconds East a distance of 101.12 feet to a point; thence South 42 Degrees 32 Minutes 38 Seconds East a distance of 222.06 feet to a point; thence South 45 Degrees 28 Minutes 14 Seconds East a distance of 350.14 feet to a point; thence South 44 Degrees 52 Minutes 48 Seconds East a distance of 547.74 feet to the **POINT OF BEGINNING**.

The above described parcel contains 59.83 acres.



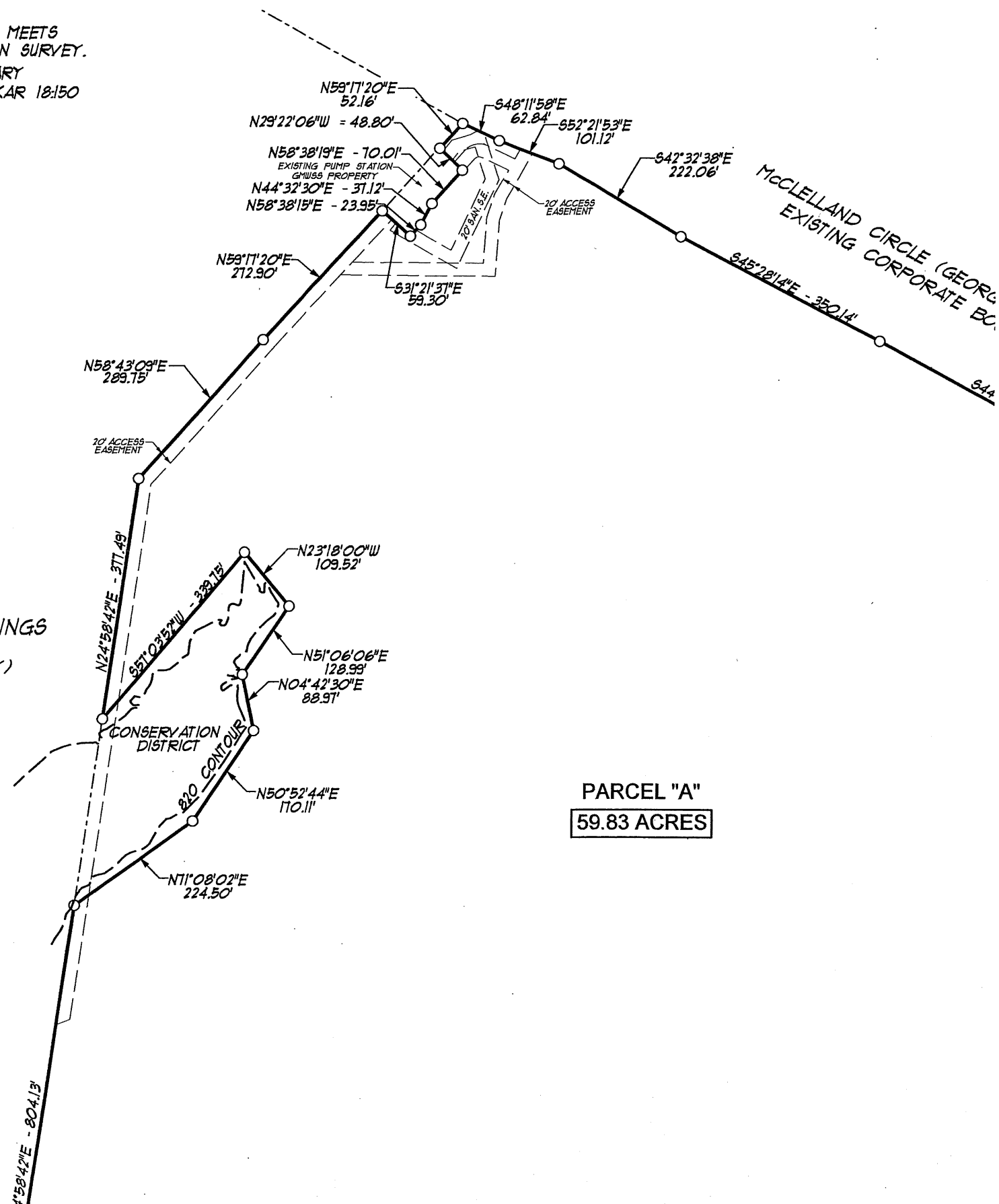
VICINITY MAP
(NOT TO SCALE)

PREPARED FOR: THE CITY OF GEORGETOWN
 SURVEY DATE = AUGUST 2018
 REFERENCE MERIDIAN = KENTUCKY STATE PLANE NORTH
 NAD83 U.S. SURVEY FEET

METHOD OF SURVEY = RANDOM TRAVERSE
 ERROR OF CLOSURE 1:460,451 (NOT ADJUSTED)

THE SURVEY AS SHOWN HEREON MEETS
 THE REQUIREMENTS OF AN URBAN SURVEY.
 THIS PLAT REPRESENTS A BOUNDARY
 SURVEY AND COMPLIES WITH 201 KAR 18:150

PARENT DOCUMENT: SLIDE 2413



PARCEL "A"
 59.83 ACRES

LAND SURVEYOR'S CERTIFICATION:

I HEREBY CERTIFY THIS PLAT WAS PREPARED BY ME, OR UNDER MY DIRECT SUPERVISION, AND THAT ALL INFORMATION INCLUDED ON THIS PLAT IS TRUE AND CORRECT TO THE BEST OF MY KNOWLEDGE AND BELIEF. THE INFORMATION CONTAINED HERE WAS COMPUTED FOR THE CITY OF GEORGETOWN, KENTUCKY, ORDINANCE NO. 2018. THIS PLAT DEPICTS AN ANNEXATION OF A TRACT OR PARCEL OF LAND CONTIGUOUS TO THE EXISTING CORPORATE LIMITS OF THE CITY OF GEORGETOWN, KENTUCKY AND HAS BEEN FILED IN THE SCOTT COUNTY CLERK'S OFFICE. THIS PLAT DOES NOT REPRESENT AN ACTUAL SURVEY ON THE GROUND AND IS PREPARED FOR INFORMATIONAL PURPOSES ONLY. NO MONUMENTS WERE SET OR VERIFIED IN THE PREPARATION OF THIS PLAT.

11/6/18
 DATE

[Signature]
 RICHARD B. NUNNERY, KY PL5 9992
 EA PARTNERS, PLC
 311 WALL STREET
 LEXINGTON, KENTUCKY 40513

DUDLEY L. JENNINGS
 (D.B. 252, PG. 41)
 (A-1 ZONE - COUNTY)

STATE OF KENTUCKY
 RICHARD B. NUNNERY
 LS-3992
 LICENSED
 PROFESSIONAL
 LAND SURVEYOR

[Signature]
 11/6/18

PREPARED FOR: THE CITY OF GEORGETOWN
SURVEY DATE = AUGUST 2018

REFERENCE MERIDIAN = KENTUCKY STATE PLANE NORTH
NAD83 U.S. SURVEY FEET

METHOD OF SURVEY = RANDOM TRAVERSE
ERROR OF CLOSURE 1:460,451 (NOT ADJUSTED)

THE SURVEY AS SHOWN HEREON MEETS
THE REQUIREMENTS OF AN URBAN SURVEY.
THIS PLAT REPRESENTS A BOUNDARY
SURVEY AND COMPLIES WITH 201 KAR 18:150

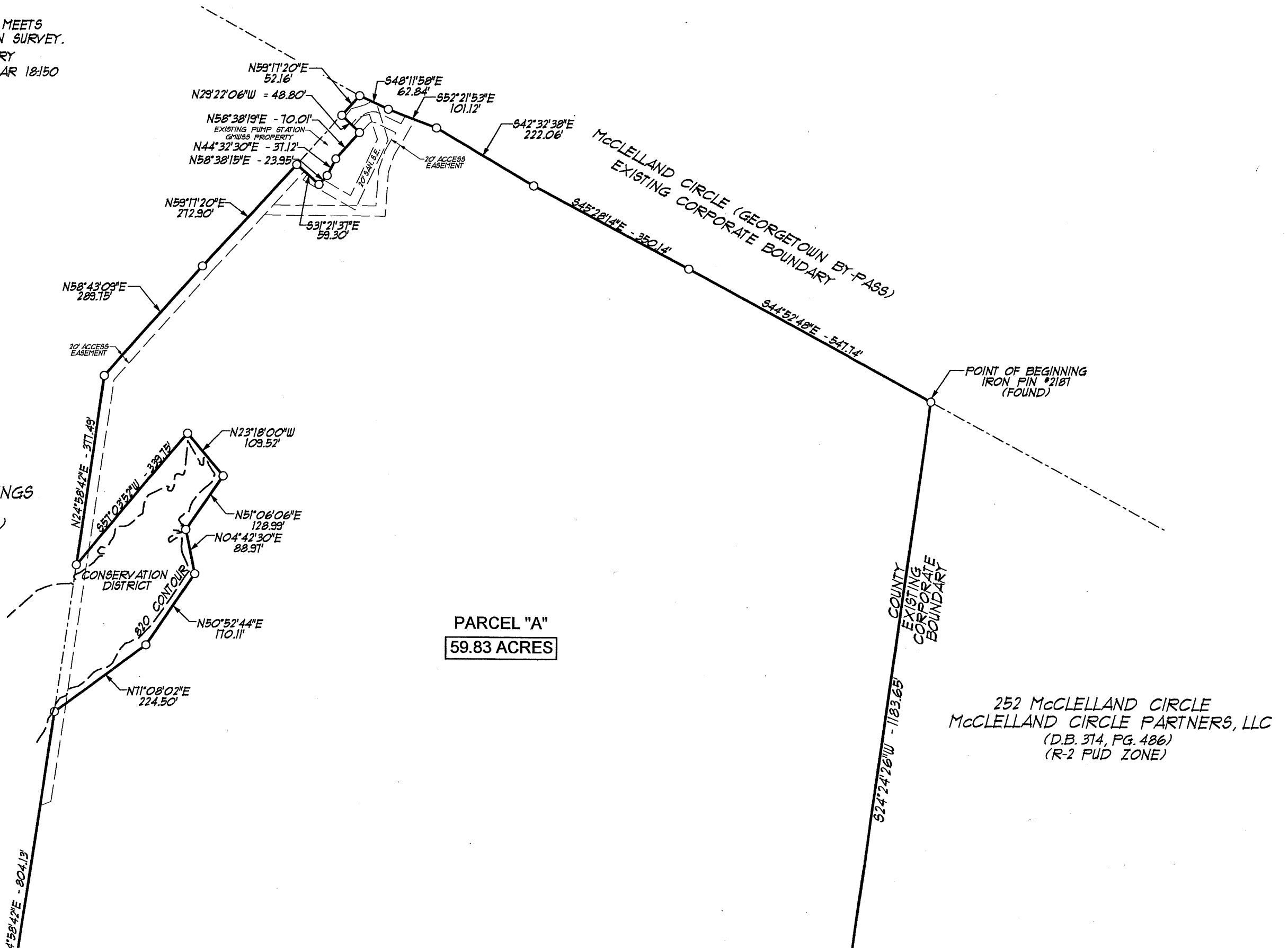
PARENT DOCUMENT: SLIDE 2413

SUPERVISION,
TO THE BEST
OF THE SURVEYOR
AS AN ANNEXATION
WITHIN THE
LIMITS OF THE
CLERK'S OFFICE.
PREPARED FOR
THE PREPARATION

PLS 3992

2513

DUDLEY L. JENNINGS
(D.B. 252, PG. 41)
(A-1 ZONE - COUNTY)



PARCEL "A"
59.83 ACRES

252 McCLELLAND CIRCLE
McCLELLAND CIRCLE PARTNERS, LLC
(D.B. 314, PG. 486)
(R-2 PUD ZONE)

OF THIS PLAT.

11/6/18
DATE

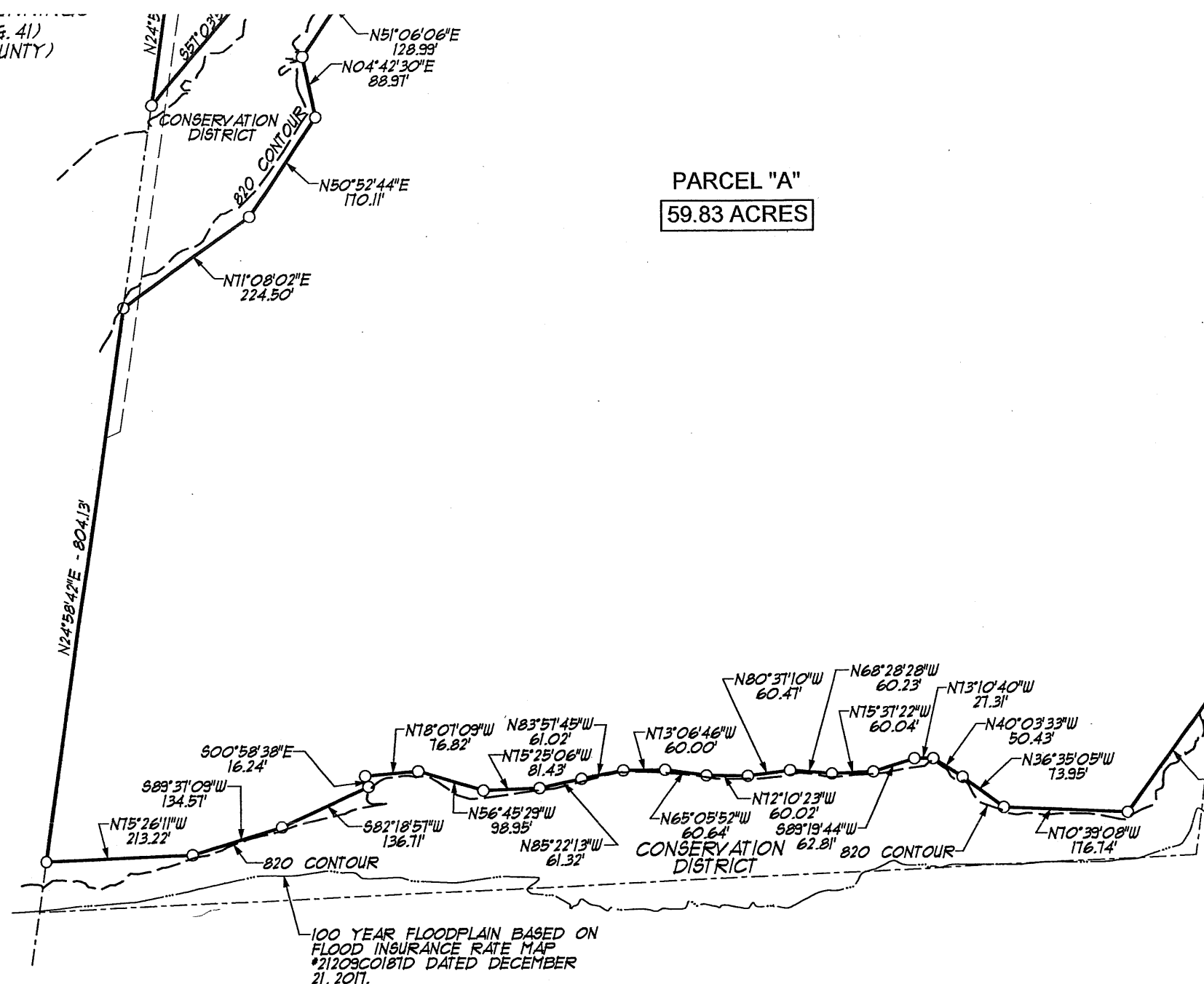
R. B. Nunnery
RICHARD B. NUNNERY, KY PLS 3992
EA PARTNERS, PLC
3111 WALL STREET
LEXINGTON, KENTUCKY 40513

(D.B. 252, PG. 41)
(A-1 ZONE - COUNTY)

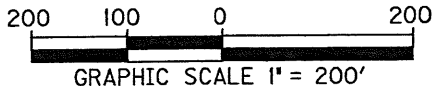
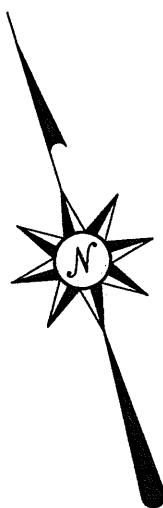
STATE OF KENTUCKY
RICHARD B. NUNNERY
LS-3992
LICENSED
PROFESSIONAL
LAND SURVEYOR

R. B. Nunnery
11/6/18

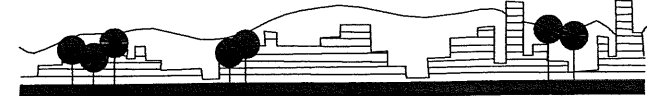
PARCEL "A"
59.83 ACRES



DUNRAVEN, LLC
(D.B. 388, PG. 106)
(A-1 ZONE - COUNTY)



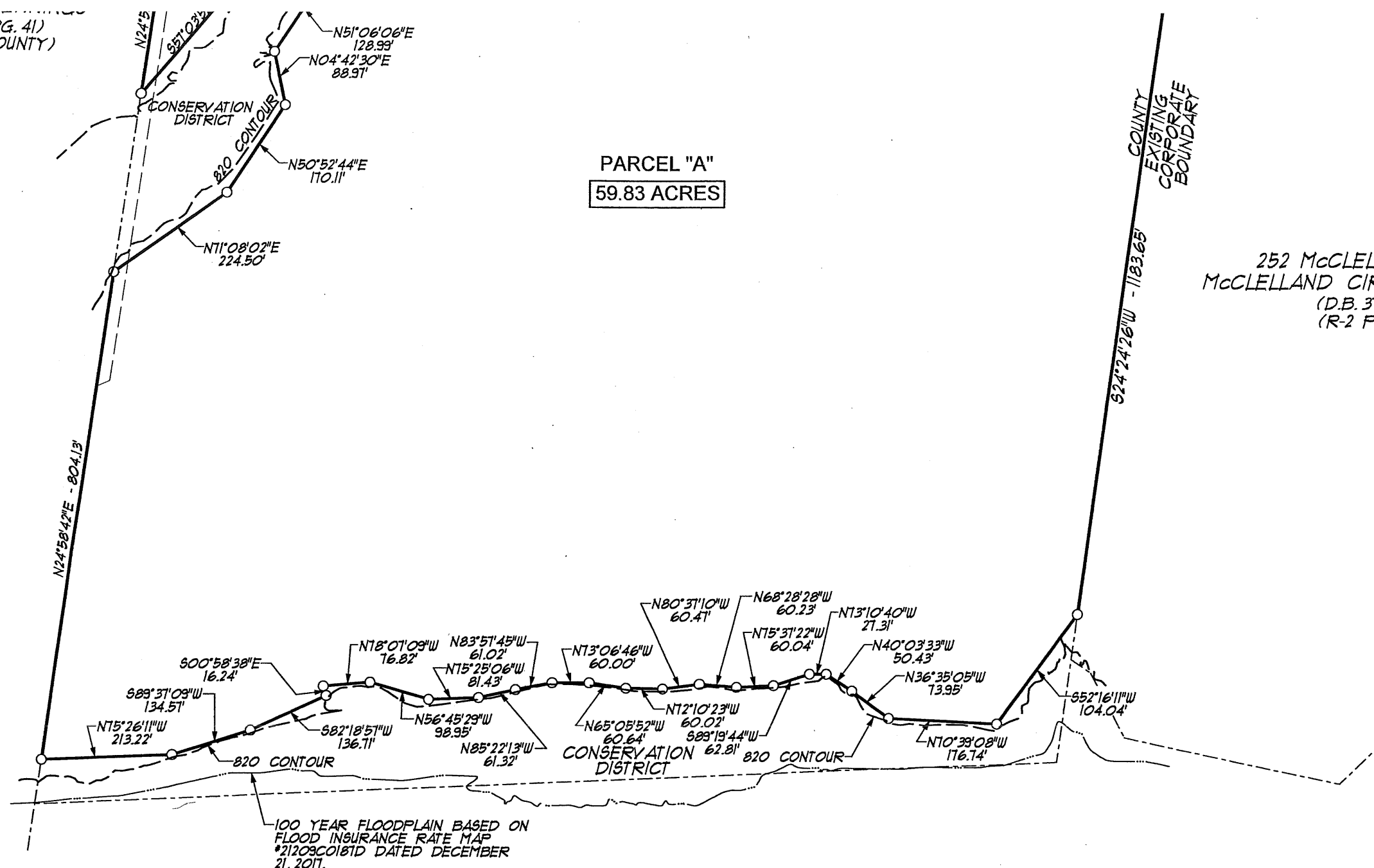
EA Partners, PLLC



CIVIL ENGINEERS • LAND SURVEYORS • LANDSCAPE ARCHITECTS
3111 WALL STREET
LEXINGTON, KENTUCKY 40513
PHONE (859) 296-9889
FACSIMILE (859) 296-9887

ANN
S
Mc
GEORGETOWN
N

(D.B. 252, PG. 41)
(A-1 ZONE - COUNTY)



PARCEL "A"
59.83 ACRES

252 McCLELLAND CIRCLE
McCLELLAND CIRCLE PARTNERS, LLC
(D.B. 314, PG. 486)
(R-2 PUD ZONE)

100 YEAR FLOODPLAIN BASED ON
FLOOD INSURANCE RATE MAP
#21209CO181D DATED DECEMBER
21, 2011.

DUNRAVEN, LLC
(D.B. 388, PG. 106)
(A-1 ZONE - COUNTY)

ANNEXATION EXHIBIT
SOUTH CROSSING
McCLELLAND CIRCLE
GEORGETOWN, SCOTT COUNTY, KENTUCKY
NOVEMBER, 2018



0 200
GRAPHIC SCALE 1" = 200'