

RECEIVED AND FILED
DATE Dec. 17, 2021

MICHAEL G. ADAMS
SECRETARY OF STATE
COMMONWEALTH OF KENTUCKY
BY Kendie Adkins

CITY OF GEORGETOWN
ORDINANCE NO. 2021 - 19

AN ORDINANCE ANNEXING INTO THE CITY OF GEORGETOWN CERTAIN REAL PROPERTY CONTAINING APPROXIMATELY 54.86 +/- ACRES LOCATED AT OR AROUND 94, 96 AND 98 DELISSA DRIVE, IN SCOTT COUNTY, KENTUCKY.

SPONSORS: Willow Hambrick and Connie Tackett

WHEREAS, Roy Cornett and Robert H. Cornett and Linda Cornett, with a collective mailing address of 126 E. Main Street, Suite 3, Georgetown, Kentucky 40324 ("Grantors"), property owners of record of the tracts of land to be annexed, have given prior written consent to the annexation of the Property; and,

WHEREAS, the Property is contiguous to the existing city limits of the City of Georgetown and is urban in character and suitable for development for urban purposes without unreasonable delay; and,

WHEREAS, the Georgetown Scott County Planning Commission has approved a Zoning Map Amendment (ZMA-2021-35) to rezone the Property to R-2 PUD (for 32.135 acres) and C-1 Conservation (for 21.869 acres), with a condition that the Property be annexed into the City of Georgetown, Kentucky;

NOW, THEREFORE, be it ordained by the City of Georgetown, Kentucky:

SECTION ONE

Pursuant to KRS 81A.412, the Georgetown City Council hereby annexes the following unincorporated area of Scott County into the City limits of the City of Georgetown:

BEGINNING AT A POINT AT KENTUCKY STATE PLANE NORTH ZONE (NAD 1983) COORDINATE N: 258564.367, E: 1546618.330, SAID POINT BEING NORTH 32°35'10" WEST A DISTANCE OF 24.34 FEET FROM A CORNER ON CITY OF GEORGETOWN ANNEXATION ORDINANCE #92-023 BOUNDARY, A CORNER TO THE PARCEL CONVEYED TO CLINT & MARGARET BEVINS TRUST IN DEED BOOK 339, PAGE 17 OF THE SCOTT COUNTY CLERK'S RECORDS, FURTHER BEING ON THE NORTHERN RIGHT-OF-WAY LINE OF KENTUCKY STATE ROUTE 460; THENCE WITH SAID RIGHT-OF-WAY LINE FOR SIX (6) CALLS:

1. SOUTH 85°06'05" WEST A DISTANCE OF 60.15 FEET;
2. ALONG A CURVE TURNING TO THE LEFT HAVING AN ARC LENGTH OF 110.74', A RADIUS OF 87.00', A CHORD BEARING OF NORTH 58°33'42" WEST, AND A CHORD LENGTH OF 103.41';
3. SOUTH 84°58'30" WEST A DISTANCE OF 208.69 FEET;
4. ALONG A CURVE TURNING TO THE LEFT HAVING AN ARC LENGTH OF 143.86', A RADIUS OF 925.00', A CHORD BEARING OF SOUTH 80°31'11" WEST, AND A CHORD LENGTH OF 143.72';
5. SOUTH 76°03'53" WEST A DISTANCE OF 51.31 FEET;
6. NORTH 85°44'40" WEST A DISTANCE OF 15.80 FEET TO A CORNER OF THE PARCEL CONVEYED TO WHITE OAK DEVELOPMENT, LLC IN DEED BOOK 295, PAGE 568; THENCE WITH THE LINE OF SAID WHITE OAK DEVELOPMENT, LLC FOR TEN (10) CALLS:
7. NORTH 20°46'39" EAST A DISTANCE OF 66.99 FEET;
8. NORTH 48°17'43" WEST A DISTANCE OF 168.22 FEET;
9. NORTH 31°54'10" WEST A DISTANCE OF 75.85 FEET;
10. NORTH 24°07'24" WEST A DISTANCE OF 173.41 FEET;
11. NORTH 22°19'51" WEST A DISTANCE OF 201.69 FEET;
12. NORTH 22°24'59" WEST A DISTANCE OF 100.21 FEET;
13. NORTH 40°06'16" WEST A DISTANCE OF 102.50 FEET;
14. NORTH 43°26'50" WEST A DISTANCE OF 135.33 FEET;
15. NORTH 52°04'34" WEST A DISTANCE OF 132.64 FEET;
16. NORTH 46°40'15" WEST A DISTANCE OF 44.59 FEET TO A CORNER TO THE PARCEL CONVEYED TO GEORGETOWN COLLEGE, INC. IN DEED BOOK 348, PAGE 484; THENCE

WITH THE LINE OF SAID GEORGETOWN COLLEGE, INC FOR FIVE (5) CALLS:

17. NORTH 35°01'19" EAST A DISTANCE OF 73.29 FEET;
18. NORTH 37°44'39" EAST A DISTANCE OF 59.55 FEET;
19. NORTH 29°03'42" WEST A DISTANCE OF 379.97 FEET;
20. NORTH 23°47'30" WEST A DISTANCE OF 150.63 FEET;
21. NORTH 82°36'09" WEST A DISTANCE OF 197.45 FEET TO A POINT ON THE LINE OF LOT 109 OF PAYNE'S LANDING SUBDIVISION, UNIT 1 AS DEPICTED IN PLAT CABINET 8, SLIDE 277; THENCE WITH THE LINE OF SAID LOT 109 FOR ONE (1) CALL:
22. NORTH 08°20'31" EAST A DISTANCE OF 29.23 FEET TO A CORNER OF LOT 108 OF PAYNE'S LANDING SUBDIVISION, UNIT 2 AS DEPICT IN PLAT CABINET 8, SLIDE 57; THENCE WITH THE LINES OF PAYNE'S LANDING SUBDIVISION, SECTION 2, UNIT 6, AS DEPICTED IN PLAT CABINET 9, SLIDE 299, UNIT 7 AS DEPICTED IN AT CABINET 10, SLIDE 51, UNIT 9 AS DEPICTED IN PLAT CABINET 10, SLIDE 54 AND UNIT 10 AS DEPICTED IN PLAT CABINET 9, SLIDE 378 FOR THIRTY TWO (32) CALLS:
23. NORTH 07°54'10" EAST A DISTANCE OF 359.00 FEET;
24. NORTH 61°08'06" EAST A DISTANCE OF 117.25 FEET;
25. NORTH 08°36'19" EAST A DISTANCE OF 7.22 FEET;
26. NORTH 87°13'45" EAST A DISTANCE OF 56.89 FEET;
27. SOUTH 86°04'33" EAST A DISTANCE OF 53.52 FEET;
28. SOUTH 72°02'51" EAST A DISTANCE OF 55.63 FEET;
29. SOUTH 49°44'48" EAST A DISTANCE OF 56.10 FEET;
30. SOUTH 34°26'54" EAST A DISTANCE OF 53.47 FEET;
31. SOUTH 30°17'24" EAST A DISTANCE OF 32.07 FEET;

32. NORTH 44°18'40" EAST A DISTANCE OF 106.56 FEET;
33. NORTH 48°42'41" EAST A DISTANCE OF 68.58 FEET;
34. NORTH 52°13'15" EAST A DISTANCE OF 78.20 FEET;
35. NORTH 54°31'04" EAST A DISTANCE OF 127.98 FEET;
36. NORTH 47°19'28" EAST A DISTANCE OF 45.05 FEET;
37. NORTH 33°38'46" EAST A DISTANCE OF 67.05 FEET;
38. NORTH 20°03'10" EAST A DISTANCE OF 32.81 FEET;
39. NORTH 20°03'10" EAST A DISTANCE OF 44.66 FEET;
40. NORTH 17°12'17" EAST A DISTANCE OF 17.92 FEET;
41. NORTH 10°51'09" EAST A DISTANCE OF 24.97 FEET;
42. SOUTH 81°02'23" EAST A DISTANCE OF 16.54 FEET;
43. NORTH 05°27'58" EAST A DISTANCE OF 11.76 FEET;
44. NORTH 05°27'58" EAST A DISTANCE OF 434.11 FEET;
45. NORTH 05°27'58" EAST A DISTANCE OF 461.91 FEET;
46. NORTH 05°41'20" EAST A DISTANCE OF 65.21 FEET;
47. NORTH 21°15'01" EAST A DISTANCE OF 437.05 FEET;
48. NORTH 13°23'07" EAST A DISTANCE OF 158.29 FEET;
49. NORTH 08°13'33" EAST A DISTANCE OF 91.67 FEET;
50. NORTH 11°39'44" EAST A DISTANCE OF 162.74 FEET;
51. NORTH 25°58'06" EAST A DISTANCE OF 65.68 FEET;
52. NORTH 16°21'46" EAST A DISTANCE OF 67.37 FEET;
53. NORTH 18°32'16" EAST A DISTANCE OF 82.52 FEET;
54. NORTH 23°56'36" EAST A DISTANCE OF 27.42 FEET TO A CORNER OF THE PARCEL CONVEYED TO CATHOLIC EDUCATION OPPORTUNITIES, INC. IN DEED BOOK 421,

PAGE 26; THENCE WITH THE LINE OF SAID CATHOLIC
EDUCATION OPPORTUNITIES, INC. FOR TWENTY SEVEN
(27) CALLS:

55. NORTH 15°48'46" EAST A DISTANCE OF 39.55 FEET;
56. NORTH 11°34'20" EAST A DISTANCE OF 39.86 FEET;
57. NORTH 05°06'00" EAST A DISTANCE OF 81.00 FEET;
58. NORTH 03°32'38" EAST A DISTANCE OF 42.15 FEET;
59. NORTH 06°25'14" EAST A DISTANCE OF 69.42 FEET;
60. NORTH 11°56'18" WEST A DISTANCE OF 40.72 FEET;
61. NORTH 19°32'16" WEST A DISTANCE OF 30.51 FEET;
62. NORTH 31°24'18" WEST A DISTANCE OF 48.00 FEET;
63. NORTH 35°45'00" WEST A DISTANCE OF 90.33 FEET;
64. NORTH 49°20'16" WEST A DISTANCE OF 107.62 FEET;
65. NORTH 49°21'14" WEST A DISTANCE OF 42.00 FEET;
66. NORTH 52°06'42" WEST A DISTANCE OF 36.91 FEET;
67. NORTH 55°02'40" WEST A DISTANCE OF 30.94 FEET;
68. NORTH 56°59'10" WEST A DISTANCE OF 36.37 FEET;
69. NORTH 53°49'33" WEST A DISTANCE OF 84.04 FEET;
70. NORTH 47°34'09" WEST A DISTANCE OF 72.49 FEET;
71. NORTH 48°27'09" WEST A DISTANCE OF 55.93 FEET;
72. NORTH 50°08'03" WEST A DISTANCE OF 60.32 FEET;
73. NORTH 50°28'48" WEST A DISTANCE OF 47.27 FEET;
74. NORTH 62°38'10" WEST A DISTANCE OF 9.90 FEET;
75. NORTH 75°39'00" WEST A DISTANCE OF 74.08 FEET;
76. NORTH 64°48'56" WEST A DISTANCE OF 98.46 FEET;

77. NORTH 68°24'48" WEST A DISTANCE OF 53.01 FEET;
78. NORTH 76°55'10" WEST A DISTANCE OF 114.46 FEET;
79. NORTH 79°27'02" WEST A DISTANCE OF 52.83 FEET;
80. NORTH 86°51'21" WEST A DISTANCE OF 97.14 FEET;
81. NORTH 87°34'59" WEST A DISTANCE OF 87.84 FEET TO A CORNER OF THE PARCEL CONVEYED TO CANEWOOD HOA GC, LLC IN DEED BOOK 373, PAGE 212; THENCE WITH THE LINE OF SAID CANEWOOD HOA GC, LLC FOR ONE (1) CALL:
82. NORTH 12°34'42" EAST A DISTANCE OF 14.78 FEET TO A CORNER OF BEVINS, SAID POINT BEING AT KENTUCKY STATE PLANE NORTH ZONE (NAD 1983) COORDINATE N: 263855.818, E: 1545244.109; THENCE WITH THE LINE OF BEVINS FOR SEVENTEEN (17) CALLS:
83. SOUTH 87°51'30" EAST A DISTANCE OF 86.19 FEET;
84. SOUTH 86°06'21" EAST A DISTANCE OF 84.95 FEET;
85. SOUTH 82°23'08" EAST A DISTANCE OF 42.93 FEET;
86. SOUTH 83°31'32" EAST A DISTANCE OF 113.69 FEET;
87. SOUTH 69°46'44" EAST A DISTANCE OF 56.31 FEET;
88. SOUTH 70°09'11" EAST A DISTANCE OF 88.50 FEET;
89. SOUTH 64°38'30" EAST A DISTANCE OF 127.59 FEET;
90. SOUTH 55°02'26" EAST A DISTANCE OF 50.02 FEET;
91. SOUTH 53°06'59" EAST A DISTANCE OF 72.21 FEET;
92. SOUTH 47°58'05" EAST A DISTANCE OF 64.23 FEET;
93. SOUTH 49°35'56" EAST A DISTANCE OF 147.20 FEET;
94. SOUTH 52°47'20" EAST A DISTANCE OF 235.00 FEET;
95. SOUTH 40°01'23" EAST A DISTANCE OF 110.09 FEET;
96. SOUTH 27°49'49" EAST A DISTANCE OF 97.20 FEET;

97. SOUTH 09°26'40" EAST A DISTANCE OF 92.52 FEET;
98. SOUTH 11°01'11" WEST A DISTANCE OF 43.07 FEET;
99. SOUTH 80°52'16" EAST A DISTANCE OF 46.00 FEET TO A POINT ON THE CENTERLINE OF NORTH FORK OF ELKHORN CREEK; THENCE WITH SAID CENTERLINE AND CONTINUING WITH THE LINE OF BEVINS FOR THIRTY (30) CALLS:
100. SOUTH 10°32'54" WEST A DISTANCE OF 185.36 FEET;
101. SOUTH 02°57'20" EAST A DISTANCE OF 164.32 FEET;
102. SOUTH 04°58'32" EAST A DISTANCE OF 396.70 FEET;
103. SOUTH 03°09'58" EAST A DISTANCE OF 569.39 FEET;
104. SOUTH 20°35'08" EAST A DISTANCE OF 110.08 FEET;
105. SOUTH 16°14'47" EAST A DISTANCE OF 127.74 FEET;
106. SOUTH 18°46'21" EAST A DISTANCE OF 141.90 FEET;
107. SOUTH 04°32'49" WEST A DISTANCE OF 181.65 FEET;
108. SOUTH 19°22'30" WEST A DISTANCE OF 181.42 FEET;
109. SOUTH 35°10'19" WEST A DISTANCE OF 210.20 FEET;
110. SOUTH 35°14'52" WEST A DISTANCE OF 108.42 FEET;
111. SOUTH 35°14'52" WEST A DISTANCE OF 32.87 FEET;
112. SOUTH 38°27'03" WEST A DISTANCE OF 92.02 FEET;
113. SOUTH 34°22'16" WEST A DISTANCE OF 84.05 FEET;
114. SOUTH 27°58'47" WEST A DISTANCE OF 91.74 FEET;
115. SOUTH 23°04'22" WEST A DISTANCE OF 81.80 FEET;
116. SOUTH 20°51'38" WEST A DISTANCE OF 115.12 FEET;
117. SOUTH 10°43'20" WEST A DISTANCE OF 205.57 FEET;
118. SOUTH 04°30'12" WEST A DISTANCE OF 114.31 FEET;

119. SOUTH 00°25'57" WEST A DISTANCE OF 149.81 FEET;
120. SOUTH 03°38'06" WEST A DISTANCE OF 120.30 FEET;
121. SOUTH 01°22'07" WEST A DISTANCE OF 204.57 FEET;
122. SOUTH 11°46'14" EAST A DISTANCE OF 307.58 FEET;
123. SOUTH 23°05'51" EAST A DISTANCE OF 116.73 FEET;
124. SOUTH 30°01'15" EAST A DISTANCE OF 82.71 FEET;
125. SOUTH 47°54'07" EAST A DISTANCE OF 95.07 FEET;
126. SOUTH 57°32'33" EAST A DISTANCE OF 135.14 FEET;
127. SOUTH 59°49'36" EAST A DISTANCE OF 78.52 FEET;
128. SOUTH 63°36'24" EAST A DISTANCE OF 73.53 FEET;
129. SOUTH 80°04'53" EAST A DISTANCE OF 67.89 FEET;
THENCE LEAVING SAID CENTERLINE OF NORTH ELKHORN
CREEK AND CONTINUING WITH THE LINE OF BEVINS FOR
TWO (2) CALLS:
130. SOUTH 08°52'18" EAST A DISTANCE OF 232.01 FEET;
131. SOUTH 08°54'18" EAST A DISTANCE OF 62.36 FEET TO THE
POINT OF BEGINNING, CONTAINING 54.859 ACRES.

THIS DESCRIPTION IS BASED ON A FIELD SURVEY CONDUCTED UNDER THE DIRECTION OF RICHEY B. NEWTON, P.L.S. 3674 BETWEEN APRIL 15TH AND MAY 6TH OF 2021. THE BASIS OF BEARINGS IS KENTUCKY STATE PLANE NORTH ZONE COORDINATES (NAD'83) DERIVED BY STATIC GPS OBSERVATION.

THIS BEING THE SAME PROPERTY AS CONVEYED TO ROY M. CORNETT et al IN DEED BOOK 357, PAGE 432 (DEED OF CORRECTION @ DEED BOOK 359, PAGE 481), DEED BOOK 377, PAGE 442, AND DEED BOOK 357, PAGE 426 ALL OF THE SCOTT COUNTY CLERK'S RECORDS.

SECTION TWO

If any section, subsection, sentence, clause or phrase of this ordinance is held unconstitutional or otherwise invalid, such infirmity shall not affect the validity of the remaining portions of this ordinance.

SECTION THREE

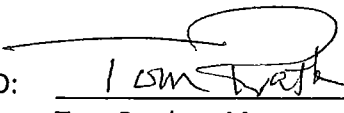
All ordinances or parts of ordinances in conflict with this ordinance are hereby repealed.

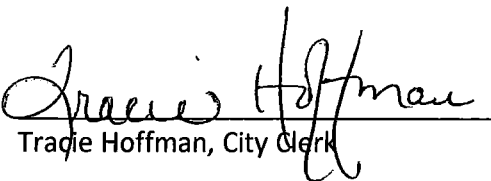
SECTION FOUR

This ordinance shall be subject to the passage and effectiveness of the Ordinance changing the zoning classification of the Property from A-1 to R-2 PUD (for 32.135 acres) and C-1 Conservation (for 21.869 acres) and shall take effect after the passage and publication of this ordinance and the "Zoning Ordinance" according to law.

PUBLICLY INTRODUCED AND READ FIRST TIME: November 8, 2021

PUBLICLY READ SECOND TIME AND PASSED: November 22, 2021

APPROVED: 
Tom Prather, Mayor

ATTEST: 
Traie Hoffman, City Clerk

CITY OF GEORGETOWN

ORDINANCE NO. 2021 -19

AN ORDINANCE ANNEXING INTO THE CITY OF GEORGETOWN CERTAIN REAL PROPERTY CONTAINING APPROXIMATELY 54.86 +/- ACRES LOCATED AT OR AROUND 94, 96 AND 98 DELISSA DRIVE, IN SCOTT COUNTY, KENTUCKY.

SUMMARY

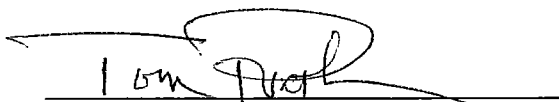
1. Annexes into Georgetown city limits, by written consent of the property owner in accordance with KRS 81A.412, approximately 54.86 +/- acres of property located at 94, 96 and 98 Delissa Drive.
2. Provides for repeal of inconsistent laws, severability of provisions, and an effective date upon passage and publication.

The full text of Ordinance 2021-19 is available for examination in the City Clerk's Office, 100 North Court Street, Georgetown, Kentucky 40324 or at www.georgetownky.gov.

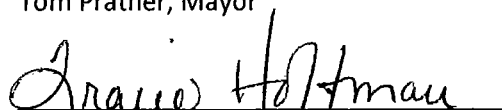
PUBLICLY INTRODUCED AND READ FIRST TIME: November 8, 2021

PUBLICLY READ SECOND TIME AND PASSED: November 22, 2021

APPROVED:


Tom Prather, Mayor

ATTEST:


Tracee Hoffman, City Clerk

I, Devon Elise Golden, hereby certify I am an Attorney licensed to practice law in the Commonwealth of Kentucky. My office is located at 100 North Court Street, Georgetown, Kentucky 40324. I further certify the foregoing Summary of Ordinance 2021-19 of the City of Georgetown, Kentucky, was prepared in accordance with the requirements of KRS 83A.060(9) and is a true and accurate summary of the contents of said Ordinance.



Devon Elise Golden



100 Court Street
Georgetown, KY 40324-0677
Phone: (502) 863-9804
Fax: (502) 863-9962

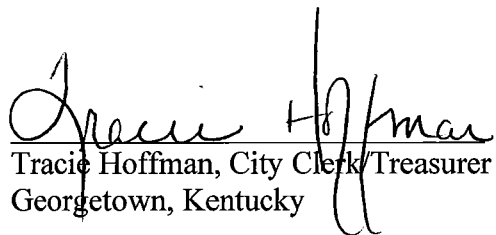
City of Georgetown
CITY CLERK - TREASURER

CERTIFICATION: KRS 81A.470

I certify I am the duly qualified City Clerk of the City of Georgetown, Kentucky, and the forgoing 10 pages of Ordinance No. 21-019 is a true, correct, and complete copy duly adopted by the City Council at a duly convened meeting held on November 22, 2021, all as appears in the official records of said City.

WITNESS, my hand and seal of the City of Georgetown, Kentucky, this the 17th day of

December


Tracie Hoffman, City Clerk/Treasurer
Georgetown, Kentucky

**ANNEXATION PARCEL DESCRIPTION
94,96 & 98 DELISSA DRIVE
GEORGETOWN. SCOTT COUNTY, KY
CORNETT PARCELS**

BEGINNING AT A POINT AT KENTUCKY STATE PLANE NORTH ZONE (NAD 1983) COORDINATE N: 258564.367, E: 1546618.330, SAID POINT BEING NORTH 32°35'10" WEST A DISTANCE OF 24.34 FEET FROM A CORNER ON CITY OF GEORGETOWN ANNEXATION ORDINANCE #92-023 BOUNDARY, A CORNER TO THE PARCEL CONVEYED TO CLINT & MARGARET BEVINS TRUST IN DEED BOOK 339, PAGE 17 OF THE SCOTT COUNTY CLERK'S RECORDS, FURTHER BEING ON THE NORTHERN RIGHT-OF-WAY LINE OF KENTUCKY STATE ROUTE 460; THENCE WITH SAID RIGHT-OF-WAY LINE FOR SIX (6) CALLS:

1. SOUTH 85°06'05" WEST A DISTANCE OF 60.15 FEET;
2. ALONG A CURVE TURNING TO THE LEFT HAVING AN ARC LENGTH OF 110.74', A RADIUS OF 87.00', A CHORD BEARING OF NORTH 58°33'42" WEST, AND A CHORD LENGTH OF 103.41';
3. SOUTH 84°58'30" WEST A DISTANCE OF 208.69 FEET;
4. ALONG A CURVE TURNING TO THE LEFT HAVING AN ARC LENGTH OF 143.86', A RADIUS OF 925.00', A CHORD BEARING OF SOUTH 80°31'11" WEST, AND A CHORD LENGTH OF 143.72';
5. SOUTH 76°03'53" WEST A DISTANCE OF 51.31 FEET;
6. NORTH 85°44'40" WEST A DISTANCE OF 15.80 FEET TO A CORNER OF THE PARCEL CONVEYED TO WHITE OAK DEVELOPMENT, LLC IN DEED BOOK 295, PAGE 568; THENCE WITH THE LINE OF SAID WHITE OAK DEVELOPMENT, LLC FOR TEN (10) CALLS:

7. NORTH 20°46'39" EAST A DISTANCE OF 66.99 FEET;
8. NORTH 48°17'43" WEST A DISTANCE OF 168.22 FEET;
9. NORTH 31°54'10" WEST A DISTANCE OF 75.85 FEET;
10. NORTH 24°07'24" WEST A DISTANCE OF 173.41 FEET;
11. NORTH 22°19'51" WEST A DISTANCE OF 201.69 FEET;
12. NORTH 22°24'59" WEST A DISTANCE OF 100.21 FEET;
13. NORTH 40°06'16" WEST A DISTANCE OF 102.50 FEET;
14. NORTH 43°26'50" WEST A DISTANCE OF 135.33 FEET;
15. NORTH 52°04'34" WEST A DISTANCE OF 132.64 FEET;
16. NORTH 46°40'15" WEST A DISTANCE OF 44.59 FEET TO A CORNER TO THE PARCEL CONVEYED TO GEORGETOWN COLLEGE, INC. IN DEED BOOK 348, PAGE 484; THENCE WITH THE LINE OF SAID GEORGETOWN COLLEGE, INC FOR FIVE (5) CALLS:

17. NORTH 35°01'19" EAST A DISTANCE OF 73.29 FEET;
18. NORTH 37°44'39" EAST A DISTANCE OF 59.55 FEET;
19. NORTH 29°03'42" WEST A DISTANCE OF 379.97 FEET;
20. NORTH 23°47'30" WEST A DISTANCE OF 150.63 FEET;
21. NORTH 82°36'09" WEST A DISTANCE OF 197.45 FEET TO A POINT ON THE LINE OF LOT 109 OF PAYNE'S LANDING SUBDIVISION, UNIT 1 AS

DEPICTED IN PLAT CABINET 8, SLIDE 277; THENCE WITH THE LINE OF SAID LOT 109 FOR ONE (1) CALL:

22. NORTH $08^{\circ}20'31''$ EAST A DISTANCE OF 29.23 FEET TO A CORNER OF LOT 108 OF PAYNE'S LANDING SUBDIVISION, UNIT 2 AS DEPICT IN PLAT CABINET 8, SLIDE 57; THENCE WITH THE LINES OF PAYNE'S LANDING SUBDIVISION, SECTION 2, UNIT 6, AS DEPICTED IN PLAT CABINET 9, SLIDE 299, UNIT 7 AS DEPICTED IN AT CABINET 10, SLIDE 51, UNIT 9 AS DEPICTED IN PLAT CABINET 10, SLIDE 54 AND UNIT 10 AS DEPICTED IN PLAT CABINET 9, SLIDE 378 FOR THIRTY TWO (32) CALLS:
23. NORTH $07^{\circ}54'10''$ EAST A DISTANCE OF 359.00 FEET;
24. NORTH $61^{\circ}08'06''$ EAST A DISTANCE OF 117.25 FEET;
25. NORTH $08^{\circ}36'19''$ EAST A DISTANCE OF 7.22 FEET;
26. NORTH $87^{\circ}13'45''$ EAST A DISTANCE OF 56.89 FEET;
27. SOUTH $86^{\circ}04'33''$ EAST A DISTANCE OF 53.52 FEET;
28. SOUTH $72^{\circ}02'51''$ EAST A DISTANCE OF 55.63 FEET;
29. SOUTH $49^{\circ}44'48''$ EAST A DISTANCE OF 56.10 FEET;
30. SOUTH $34^{\circ}26'54''$ EAST A DISTANCE OF 53.47 FEET;
31. SOUTH $30^{\circ}17'24''$ EAST A DISTANCE OF 32.07 FEET;
32. NORTH $44^{\circ}18'40''$ EAST A DISTANCE OF 106.56 FEET;
33. NORTH $48^{\circ}42'41''$ EAST A DISTANCE OF 68.58 FEET;
34. NORTH $52^{\circ}13'15''$ EAST A DISTANCE OF 78.20 FEET;
35. NORTH $54^{\circ}31'04''$ EAST A DISTANCE OF 127.98 FEET;
36. NORTH $47^{\circ}19'28''$ EAST A DISTANCE OF 45.05 FEET;
37. NORTH $33^{\circ}38'46''$ EAST A DISTANCE OF 67.05 FEET;
38. NORTH $20^{\circ}03'10''$ EAST A DISTANCE OF 32.81 FEET;
39. NORTH $20^{\circ}03'10''$ EAST A DISTANCE OF 44.66 FEET;
40. NORTH $17^{\circ}12'17''$ EAST A DISTANCE OF 17.92 FEET;
41. NORTH $10^{\circ}51'09''$ EAST A DISTANCE OF 24.97 FEET;
42. SOUTH $81^{\circ}02'23''$ EAST A DISTANCE OF 16.54 FEET;
43. NORTH $05^{\circ}27'58''$ EAST A DISTANCE OF 11.76 FEET;
44. NORTH $05^{\circ}27'58''$ EAST A DISTANCE OF 434.11 FEET;
45. NORTH $05^{\circ}27'58''$ EAST A DISTANCE OF 461.91 FEET;
46. NORTH $05^{\circ}41'20''$ EAST A DISTANCE OF 65.21 FEET;
47. NORTH $21^{\circ}15'01''$ EAST A DISTANCE OF 437.05 FEET;
48. NORTH $13^{\circ}23'07''$ EAST A DISTANCE OF 158.29 FEET;
49. NORTH $08^{\circ}13'33''$ EAST A DISTANCE OF 91.67 FEET;
50. NORTH $11^{\circ}39'44''$ EAST A DISTANCE OF 162.74 FEET;
51. NORTH $25^{\circ}58'06''$ EAST A DISTANCE OF 65.68 FEET;
52. NORTH $16^{\circ}21'46''$ EAST A DISTANCE OF 67.37 FEET;
53. NORTH $18^{\circ}32'16''$ EAST A DISTANCE OF 82.52 FEET;
54. NORTH $23^{\circ}56'36''$ EAST A DISTANCE OF 27.42 FEET TO A CORNER OF THE PARCEL CONVEYED TO CATHOLIC EDUCATION OPPORTUNITIES, INC. IN DEED BOOK 421, PAGE 26; THENCE WITH THE LINE OF SAID CATHOLIC EDUCATION OPPORTUNITIES, INC. FOR TWENTY SEVEN (27) CALLS:
55. NORTH $15^{\circ}48'46''$ EAST A DISTANCE OF 39.55 FEET;
56. NORTH $11^{\circ}34'20''$ EAST A DISTANCE OF 39.86 FEET;
57. NORTH $05^{\circ}06'00''$ EAST A DISTANCE OF 81.00 FEET;
58. NORTH $03^{\circ}32'38''$ EAST A DISTANCE OF 42.15 FEET;
59. NORTH $06^{\circ}25'14''$ EAST A DISTANCE OF 69.42 FEET;

60. NORTH 11°56'18" WEST A DISTANCE OF 40.72 FEET;
61. NORTH 19°32'16" WEST A DISTANCE OF 30.51 FEET;
62. NORTH 31°24'18" WEST A DISTANCE OF 48.00 FEET;
63. NORTH 35°45'00" WEST A DISTANCE OF 90.33 FEET;
64. NORTH 49°20'16" WEST A DISTANCE OF 107.62 FEET;
65. NORTH 49°21'14" WEST A DISTANCE OF 42.00 FEET;
66. NORTH 52°06'42" WEST A DISTANCE OF 36.91 FEET;
67. NORTH 55°02'40" WEST A DISTANCE OF 30.94 FEET;
68. NORTH 56°59'10" WEST A DISTANCE OF 36.37 FEET;
69. NORTH 53°49'33" WEST A DISTANCE OF 84.04 FEET;
70. NORTH 47°34'09" WEST A DISTANCE OF 72.49 FEET;
71. NORTH 48°27'09" WEST A DISTANCE OF 55.93 FEET;
72. NORTH 50°08'03" WEST A DISTANCE OF 60.32 FEET;
73. NORTH 50°28'48" WEST A DISTANCE OF 47.27 FEET;
74. NORTH 62°38'10" WEST A DISTANCE OF 9.90 FEET;
75. NORTH 75°39'00" WEST A DISTANCE OF 74.08 FEET;
76. NORTH 64°48'56" WEST A DISTANCE OF 98.46 FEET;
77. NORTH 68°24'48" WEST A DISTANCE OF 53.01 FEET;
78. NORTH 76°55'10" WEST A DISTANCE OF 114.46 FEET;
79. NORTH 79°27'02" WEST A DISTANCE OF 52.83 FEET;
80. NORTH 86°51'21" WEST A DISTANCE OF 97.14 FEET;
81. NORTH 87°34'59" WEST A DISTANCE OF 87.84 FEET TO A CORNER OF THE PARCEL CONVEYED TO CANEWOOD HOA GC, LLC IN DEED BOOK 373, PAGE 212; THENCE WITH THE LINE OF SAID CANEWOOD HOA GC, LLC FOR ONE (1) CALL:
82. NORTH 12°34'42" EAST A DISTANCE OF 14.78 FEET TO A CORNER OF BEVINS, SAID POINT BEING AT KENTUCKY STATE PLANE NORTH ZONE (NAD 1983) COORDINATE N: 263855.818, E: 1545244.109; THENCE WITH THE LINE OF BEVINS FOR SEVENTEEN (17) CALLS:
83. SOUTH 87°51'30" EAST A DISTANCE OF 86.19 FEET;
84. SOUTH 86°06'21" EAST A DISTANCE OF 84.95 FEET;
85. SOUTH 82°23'08" EAST A DISTANCE OF 42.93 FEET;
86. SOUTH 83°31'32" EAST A DISTANCE OF 113.69 FEET;
87. SOUTH 69°46'44" EAST A DISTANCE OF 56.31 FEET;
88. SOUTH 70°09'11" EAST A DISTANCE OF 88.50 FEET;
89. SOUTH 64°38'30" EAST A DISTANCE OF 127.59 FEET;
90. SOUTH 55°02'26" EAST A DISTANCE OF 50.02 FEET;
91. SOUTH 53°06'59" EAST A DISTANCE OF 72.21 FEET;
92. SOUTH 47°58'05" EAST A DISTANCE OF 64.23 FEET;
93. SOUTH 49°35'56" EAST A DISTANCE OF 147.20 FEET;
94. SOUTH 52°47'20" EAST A DISTANCE OF 235.00 FEET;
95. SOUTH 40°01'23" EAST A DISTANCE OF 110.09 FEET;
96. SOUTH 27°49'49" EAST A DISTANCE OF 97.20 FEET;
97. SOUTH 09°26'40" EAST A DISTANCE OF 92.52 FEET;
98. SOUTH 11°01'11" WEST A DISTANCE OF 43.07 FEET;
99. SOUTH 80°52'16" EAST A DISTANCE OF 46.00 FEET TO A POINT ON THE CENTERLINE OF NORTH FORK OF ELKHORN CREEK; THENCE WITH SAID CENTERLINE AND CONTINUING WITH THE LINE OF BEVINS FOR THIRTY (30) CALLS:

100. SOUTH 10°32'54" WEST A DISTANCE OF 185.36 FEET;
 101. SOUTH 02°57'20" EAST A DISTANCE OF 164.32 FEET;
 102. SOUTH 04°58'32" EAST A DISTANCE OF 396.70 FEET;
 103. SOUTH 03°09'58" EAST A DISTANCE OF 569.39 FEET;
 104. SOUTH 20°35'08" EAST A DISTANCE OF 110.08 FEET;
 105. SOUTH 16°14'47" EAST A DISTANCE OF 127.74 FEET;
 106. SOUTH 18°46'21" EAST A DISTANCE OF 141.90 FEET;
 107. SOUTH 04°32'49" WEST A DISTANCE OF 181.65 FEET;
 108. SOUTH 19°22'30" WEST A DISTANCE OF 181.42 FEET;
 109. SOUTH 35°10'19" WEST A DISTANCE OF 210.20 FEET;
 110. SOUTH 35°14'52" WEST A DISTANCE OF 108.42 FEET;
 111. SOUTH 35°14'52" WEST A DISTANCE OF 32.87 FEET;
 112. SOUTH 38°27'03" WEST A DISTANCE OF 92.02 FEET;
 113. SOUTH 34°22'16" WEST A DISTANCE OF 84.05 FEET;
 114. SOUTH 27°58'47" WEST A DISTANCE OF 91.74 FEET;
 115. SOUTH 23°04'22" WEST A DISTANCE OF 81.80 FEET;
 116. SOUTH 20°51'38" WEST A DISTANCE OF 115.12 FEET;
 117. SOUTH 10°43'20" WEST A DISTANCE OF 205.57 FEET;
 118. SOUTH 04°30'12" WEST A DISTANCE OF 114.31 FEET;
 119. SOUTH 00°25'57" WEST A DISTANCE OF 149.81 FEET;
 120. SOUTH 03°38'06" WEST A DISTANCE OF 120.30 FEET;
 121. SOUTH 01°22'07" WEST A DISTANCE OF 204.57 FEET;
 122. SOUTH 11°46'14" EAST A DISTANCE OF 307.58 FEET;
 123. SOUTH 23°05'51" EAST A DISTANCE OF 116.73 FEET;
 124. SOUTH 30°01'15" EAST A DISTANCE OF 82.71 FEET;
 125. SOUTH 47°54'07" EAST A DISTANCE OF 95.07 FEET;
 126. SOUTH 57°32'33" EAST A DISTANCE OF 135.14 FEET;
 127. SOUTH 59°49'36" EAST A DISTANCE OF 78.52 FEET;
 128. SOUTH 63°36'24" EAST A DISTANCE OF 73.53 FEET;
 129. SOUTH 80°04'53" EAST A DISTANCE OF 67.89 FEET; THENCE LEAVING
 SAID CENTERLINE OF NORTH ELKHORN CREEK AND CONTINUING WITH THE
 LINE OF BEVINS FOR TWO (2) CALLS:

 130. SOUTH 08°52'18" EAST A DISTANCE OF 232.01 FEET;
 131. SOUTH 08°54'18" EAST A DISTANCE OF 62.36 FEET TO THE POINT OF
 BEGINNING, CONTAINING 54.859 ACRES.

THIS DESCRIPTION IS BASED ON A FIELD SURVEY CONDUCTED UNDER THE
 DIRECTION OF RICHEY B. NEWTON, P.L.S. 3674 BETWEEN APRIL 15TH AND MAY
 6TH OF 2021. THE BASIS OF BEARINGS IS KENTUCKY STATE PLANE NORTH ZONE
 COORDINATES (NAD'83) DERIVED BY STATIC GPS OBSERVATION.

THIS BEING THE SAME PROPERTY AS CONVEYED TO ROY M. CORNETT et al IN
 DEED BOOK 357, PAGE 432 (DEED OF CORRECTION @ DEED BOOK 359, PAGE
 481), DEED BOOK 377, PAGE 442, AND DEED BOOK 357, PAGE 426 ALL OF THE
 SCOTT COUNTY CLERK'S RECORDS.



**ANNEXATION PARCEL DESCRIPTION
94, 96 & 98 DELISSA DRIVE
GEORGETOWN, SCOTT COUNTY, KY
CORNETT PARCELS**

BEGINNING AT A POINT AT KENTUCKY STATE PLANE NORTH ZONE (NAD 1983) COORDINATE N: 258564.367, E: 1546618.330, SAID POINT BEING NORTH 32°35'10" WEST A DISTANCE OF 24.34 FEET FROM A CORNER ON CITY OF GEORGETOWN ANNEXATION ORDINANCE #92-023 BOUNDARY, A CORNER TO THE PARCEL CONVEYED TO CLINT & MARGARET BEVINS TRUST IN DEED BOOK 339, PAGE 17 OF THE SCOTT COUNTY CLERK'S RECORDS, FURTHER BEING ON THE NORTHERN RIGHT-OF-WAY LINE OF KENTUCKY STATE ROUTE 460; THENCE WITH SAID RIGHT-OF-WAY LINE FOR SIX (6) CALLS:

1. SOUTH 85°06'05" WEST A DISTANCE OF 60.15 FEET;
2. ALONG A CURVE TURNING TO THE LEFT HAVING AN ARC LENGTH OF 110.74', A RADIUS OF 87.00', A CHORD BEARING OF NORTH 58°33'42" WEST, AND A CHORD LENGTH OF 103.41';
3. SOUTH 84°58'30" WEST A DISTANCE OF 208.69 FEET;
4. ALONG A CURVE TURNING TO THE LEFT HAVING AN ARC LENGTH OF 143.86', A RADIUS OF 925.00', A CHORD BEARING OF SOUTH 80°31'11" WEST, AND A CHORD LENGTH OF 143.72';
5. SOUTH 76°03'53" WEST A DISTANCE OF 51.31 FEET;
6. NORTH 85°44'40" WEST A DISTANCE OF 15.80 FEET TO A CORNER OF THE PARCEL CONVEYED TO WHITE OAK DEVELOPMENT, LLC IN DEED BOOK 295, PAGE 568; THENCE WITH THE LINE OF SAID WHITE OAK DEVELOPMENT, LLC FOR TEN (10) CALLS:
 7. NORTH 20°46'39" EAST A DISTANCE OF 66.99 FEET;
 8. NORTH 48°17'43" WEST A DISTANCE OF 168.22 FEET;
 9. NORTH 31°54'10" WEST A DISTANCE OF 75.85 FEET;
 10. NORTH 24°07'24" WEST A DISTANCE OF 173.41 FEET;
 11. NORTH 22°19'51" WEST A DISTANCE OF 201.69 FEET;
 12. NORTH 22°24'59" WEST A DISTANCE OF 100.21 FEET;
 13. NORTH 40°06'16" WEST A DISTANCE OF 102.50 FEET;
 14. NORTH 43°26'50" WEST A DISTANCE OF 135.33 FEET;
 15. NORTH 52°04'34" WEST A DISTANCE OF 132.64 FEET;
 16. NORTH 46°40'15" WEST A DISTANCE OF 44.59 FEET TO A CORNER TO THE PARCEL CONVEYED TO GEORGETOWN COLLEGE, INC. IN DEED BOOK 348, PAGE 484; THENCE WITH THE LINE OF SAID GEORGETOWN COLLEGE, INC FOR FIVE (5) CALLS:
 17. NORTH 35°01'19" EAST A DISTANCE OF 73.29 FEET;
 18. NORTH 37°44'39" EAST A DISTANCE OF 59.55 FEET;
 19. NORTH 29°03'42" WEST A DISTANCE OF 379.97 FEET;
 20. NORTH 23°47'30" WEST A DISTANCE OF 150.63 FEET;
 21. NORTH 82°36'09" WEST A DISTANCE OF 197.45 FEET TO A POINT ON THE LINE OF LOT 109 OF PAYNE'S LANDING SUBDIVISION, UNIT 1 AS DEPICTED IN PLAT CABINET 8, SLIDE 277; THENCE WITH THE LINE OF SAID LOT 109 FOR ONE (1) CALL:
 22. NORTH 08°20'31" EAST A DISTANCE OF 29.23 FEET TO A CORNER OF LOT 108 OF PAYNE'S LANDING SUBDIVISION, UNIT 2 AS DEPICT IN PLAT CABINET 8, SLIDE 57; THENCE WITH THE LINES OF PAYNE'S LANDING SUBDIVISION, SECTION 2, UNIT 6, AS DEPICTED IN PLAT CABINET 9, SLIDE 299, UNIT 7 AS DEPICTED IN AT CABINET 10, SLIDE 51, UNIT 9 AS DEPICTED IN PLAT CABINET 10, SLIDE 54 AND UNIT 10 AS DEPICTED IN PLAT CABINET 9, SLIDE 378 FOR THIRTY TWO (32) CALLS:
 23. NORTH 07°54'10" EAST A DISTANCE OF 359.00 FEET;
 24. NORTH 61°08'06" EAST A DISTANCE OF 117.25 FEET;
 25. NORTH 08°36'19" EAST A DISTANCE OF 7.22 FEET;
 26. NORTH 87°13'45" EAST A DISTANCE OF 56.89 FEET;
 27. SOUTH 86°04'33" EAST A DISTANCE OF 53.52 FEET;
 28. SOUTH 72°02'51" EAST A DISTANCE OF 55.63 FEET;
 29. SOUTH 49°44'48" EAST A DISTANCE OF 56.10 FEET;
 30. SOUTH 34°26'54" EAST A DISTANCE OF 53.47 FEET;
 31. SOUTH 30°17'24" EAST A DISTANCE OF 32.07 FEET;
 32. NORTH 44°18'40" EAST A DISTANCE OF 106.56 FEET;
 33. NORTH 48°42'41" EAST A DISTANCE OF 68.58 FEET;
 34. NORTH 52°13'15" EAST A DISTANCE OF 78.20 FEET;
 35. NORTH 54°31'04" EAST A DISTANCE OF 127.98 FEET;
 36. NORTH 47°19'28" EAST A DISTANCE OF 45.05 FEET;
 37. NORTH 33°38'46" EAST A DISTANCE OF 67.05 FEET;
 38. NORTH 20°03'10" EAST A DISTANCE OF 32.81 FEET;
 39. NORTH 20°03'10" EAST A DISTANCE OF 44.66 FEET;
 40. NORTH 12°34'42" EAST A DISTANCE OF 14.78 FEET;

82. NORTH 12°34'42" EAST A DISTANCE OF 14.78 FEET TO A CORNER OF BEVINS, SAID POINT BEING AT KENTUCKY STATE PLANE NORTH ZONE (NAD 1983) COORDINATE N: 263855.818, E: 1545244.109; THENCE WITH THE LINE OF BEVINS FOR SEVENTEEN (17) CALLS:

83. SOUTH 87°51'30" EAST A DISTANCE OF 86.19 FEET;
84. SOUTH 86°06'21" EAST A DISTANCE OF 84.95 FEET;
85. SOUTH 82°23'08" EAST A DISTANCE OF 42.93 FEET;
86. SOUTH 83°31'32" EAST A DISTANCE OF 113.69 FEET;
87. SOUTH 69°46'44" EAST A DISTANCE OF 56.31 FEET;
88. SOUTH 70°09'11" EAST A DISTANCE OF 86.30 FEET;
89. SOUTH 64°38'30" EAST A DISTANCE OF 127.59 FEET;
90. SOUTH 55°02'26" EAST A DISTANCE OF 50.02 FEET;
91. SOUTH 53°06'59" EAST A DISTANCE OF 72.21 FEET;
92. SOUTH 47°58'05" EAST A DISTANCE OF 64.23 FEET;
93. SOUTH 49°35'56" EAST A DISTANCE OF 147.20 FEET;
94. SOUTH 52°47'20" EAST A DISTANCE OF 235.00 FEET;
95. SOUTH 40°01'23" EAST A DISTANCE OF 110.09 FEET;
96. SOUTH 27°49'49" EAST A DISTANCE OF 97.20 FEET;
97. SOUTH 09°26'40" EAST A DISTANCE OF 92.52 FEET;
98. SOUTH 11°01'11" WEST A DISTANCE OF 43.07 FEET;
99. SOUTH 80°52'16" EAST A DISTANCE OF 46.00 FEET TO A POINT ON THE CENTERLINE OF NORTH FORK OF ELKHORN CREEK; THENCE WITH SAID CENTERLINE AND CONTINUING WITH THE LINE OF BEVINS FOR THIRTY (30) CALLS:

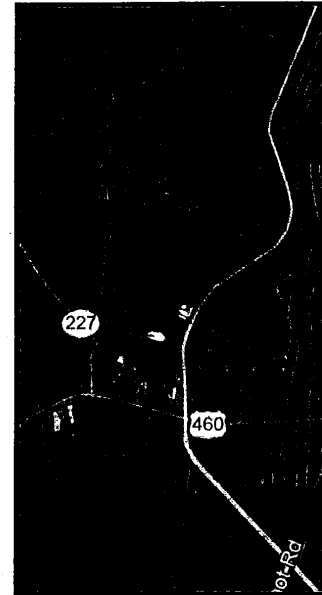
100. SOUTH 10°32'54" WEST A DISTANCE OF 185.36 FEET;
101. SOUTH 02°57'20" EAST A DISTANCE OF 164.32 FEET;
102. SOUTH 04°58'32" EAST A DISTANCE OF 396.70 FEET;
103. SOUTH 03°09'58" EAST A DISTANCE OF 569.39 FEET;
104. SOUTH 20°35'08" EAST A DISTANCE OF 110.08 FEET;
105. SOUTH 16°14'47" EAST A DISTANCE OF 127.74 FEET;
106. SOUTH 18°46'21" EAST A DISTANCE OF 141.90 FEET;
107. SOUTH 04°32'49" WEST A DISTANCE OF 181.65 FEET;
108. SOUTH 19°22'30" WEST A DISTANCE OF 181.42 FEET;
109. SOUTH 35°10'19" WEST A DISTANCE OF 210.20 FEET;
110. SOUTH 35°14'52" WEST A DISTANCE OF 108.42 FEET;
111. SOUTH 35°14'52" WEST A DISTANCE OF 32.87 FEET;
112. SOUTH 38°27'03" WEST A DISTANCE OF 92.02 FEET;
113. SOUTH 34°22'16" WEST A DISTANCE OF 84.05 FEET;
114. SOUTH 27°58'47" WEST A DISTANCE OF 91.74 FEET;
115. SOUTH 23°04'22" WEST A DISTANCE OF 81.80 FEET;
116. SOUTH 20°51'38" WEST A DISTANCE OF 115.12 FEET;
117. SOUTH 10°43'20" WEST A DISTANCE OF 205.57 FEET;
118. SOUTH 04°30'12" WEST A DISTANCE OF 114.31 FEET;
119. SOUTH 00°25'57" WEST A DISTANCE OF 149.81 FEET;
120. SOUTH 03°38'06" WEST A DISTANCE OF 120.30 FEET;
121. SOUTH 01°22'07" WEST A DISTANCE OF 204.57 FEET;
122. SOUTH 11°46'14" EAST A DISTANCE OF 307.58 FEET;
123. SOUTH 23°05'51" EAST A DISTANCE OF 116.73 FEET;
124. SOUTH 30°01'15" EAST A DISTANCE OF 82.71 FEET;
125. SOUTH 47°54'07" EAST A DISTANCE OF 95.07 FEET;
126. SOUTH 57°32'33" EAST A DISTANCE OF 135.14 FEET;
127. SOUTH 59°49'36" EAST A DISTANCE OF 78.52 FEET;
128. SOUTH 63°36'24" EAST A DISTANCE OF 73.53 FEET;
129. SOUTH 80°04'53" EAST A DISTANCE OF 67.89 FEET; THENCE LEAVING SAID CENTERLINE OF NORTH ELKHORN CREEK AND CONTINUING WITH THE LINE OF BEVINS FOR TWO (2) CALLS:

130. SOUTH 08°52'18" EAST A DISTANCE OF 232.01 FEET;
131. SOUTH 08°54'18" EAST A DISTANCE OF 62.36 FEET TO THE POINT OF BEGINNING, CONTAINING 54.859 ACRES.

THIS DESCRIPTION IS BASED ON A FIELD SURVEY CONDUCTED UNDER THE DIRECTION OF RICHEY B. NEWTON, P.L.S. 3674 BETWEEN APRIL 15TH AND MAY 6TH OF 2021. THE BASIS OF BEARINGS IS KENTUCKY STATE PLANE NORTH ZONE COORDINATES (NAD'83) DERIVED BY STATIC GPS OBSERVATION.

THIS BEING THE SAME PROPERTY AS CONVEYED TO ROY M. CORNETT, et al IN DEED BOOK 357, PAGE 432 (DEED OF CORRECTION @ DEED BOOK 359, PAGE 481), DEED BOOK 377, PAGE 442, AND DEED BOOK 357, PAGE 426 ALL OF THE SCOTT COUNTY CLERK'S RECORDS.

CITY OF
ORDINANCE
REGAL SPRING
94, 96 &
GEORGETOWN



**DEEL DESCRIPTION
DELISSA DRIVE
OTT COUNTY, KY
PARCELS**

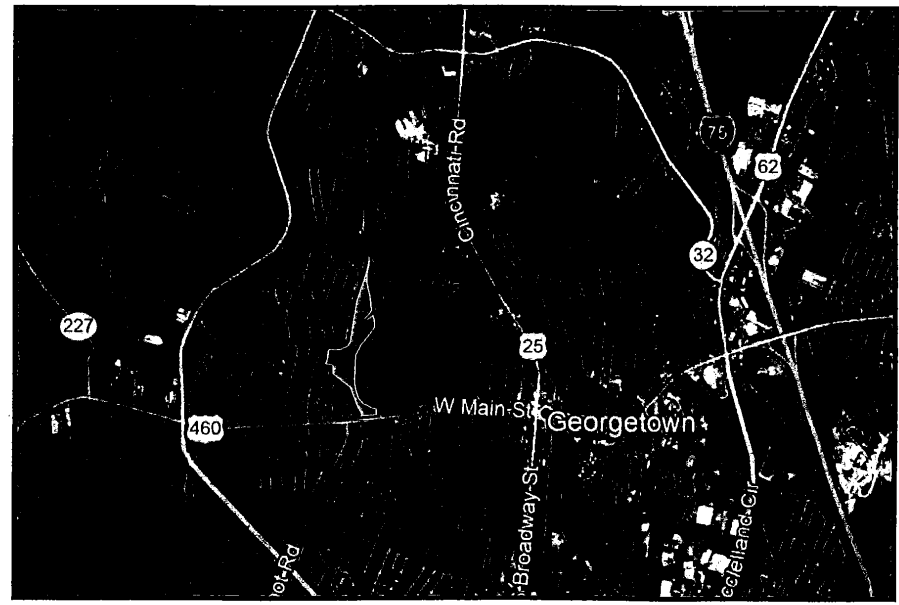
- 82. NORTH 12°34'42" EAST A DISTANCE OF 14.78 FEET TO A CORNER OF BEVINS, SAID POINT BEING AT KENTUCKY STATE PLANE NORTH ZONE (NAD 1983) COORDINATE N: 263855.818, E: 1545244.109; THENCE WITH THE LINE OF BEVINS FOR SEVENTEEN (17) CALLS:
- 83. SOUTH 87°51'30" EAST A DISTANCE OF 86.19 FEET;
- 84. SOUTH 86°06'21" EAST A DISTANCE OF 84.95 FEET;
- 85. SOUTH 82°23'08" EAST A DISTANCE OF 42.93 FEET;
- 86. SOUTH 83°31'32" EAST A DISTANCE OF 113.69 FEET;
- 87. SOUTH 69°46'44" EAST A DISTANCE OF 56.31 FEET;
- 88. SOUTH 70°09'11" EAST A DISTANCE OF 88.50 FEET;
- 89. SOUTH 64°38'30" EAST A DISTANCE OF 127.59 FEET;
- 90. SOUTH 55°02'26" EAST A DISTANCE OF 50.02 FEET;
- 91. SOUTH 53°06'59" EAST A DISTANCE OF 72.21 FEET;
- 92. SOUTH 47°58'05" EAST A DISTANCE OF 64.23 FEET;
- 93. SOUTH 49°35'56" EAST A DISTANCE OF 147.20 FEET;
- 94. SOUTH 52°47'20" EAST A DISTANCE OF 235.00 FEET;
- 95. SOUTH 40°01'23" EAST A DISTANCE OF 110.09 FEET;
- 96. SOUTH 27°49'49" EAST A DISTANCE OF 97.20 FEET;
- 97. SOUTH 09°26'40" EAST A DISTANCE OF 92.52 FEET;
- 98. SOUTH 11°01'11" WEST A DISTANCE OF 43.07 FEET;
- 99. SOUTH 80°52'16" EAST A DISTANCE OF 46.00 FEET TO A POINT ON THE CENTERLINE OF NORTH FORK OF ELKHORN CREEK; THENCE WITH SAID CENTERLINE AND CONTINUING WITH THE LINE OF BEVINS FOR THIRTY (30) CALLS:
- 100. SOUTH 10°32'54" WEST A DISTANCE OF 185.36 FEET;
- 101. SOUTH 02°57'20" EAST A DISTANCE OF 164.32 FEET;
- 102. SOUTH 04°58'32" EAST A DISTANCE OF 396.70 FEET;
- 103. SOUTH 03°09'58" EAST A DISTANCE OF 569.39 FEET;
- 104. SOUTH 20°35'08" EAST A DISTANCE OF 110.08 FEET;
- 105. SOUTH 16°14'47" EAST A DISTANCE OF 127.74 FEET;
- 106. SOUTH 18°46'21" EAST A DISTANCE OF 141.90 FEET;
- 107. SOUTH 04°32'49" WEST A DISTANCE OF 181.65 FEET;
- 108. SOUTH 19°22'30" WEST A DISTANCE OF 181.42 FEET;
- 109. SOUTH 35°10'19" WEST A DISTANCE OF 210.20 FEET;
- 110. SOUTH 35°14'52" WEST A DISTANCE OF 108.42 FEET;
- 111. SOUTH 35°14'52" WEST A DISTANCE OF 32.87 FEET;
- 112. SOUTH 38°27'03" WEST A DISTANCE OF 92.02 FEET;
- 113. SOUTH 34°22'16" WEST A DISTANCE OF 84.05 FEET;
- 114. SOUTH 27°58'47" WEST A DISTANCE OF 91.74 FEET;
- 115. SOUTH 23°04'22" WEST A DISTANCE OF 81.80 FEET;
- 116. SOUTH 20°51'38" WEST A DISTANCE OF 115.12 FEET;
- 117. SOUTH 10°43'20" WEST A DISTANCE OF 205.57 FEET;
- 118. SOUTH 04°30'12" WEST A DISTANCE OF 114.31 FEET;
- 119. SOUTH 00°25'57" WEST A DISTANCE OF 149.81 FEET;
- 120. SOUTH 03°38'06" WEST A DISTANCE OF 120.30 FEET;
- 121. SOUTH 01°22'07" WEST A DISTANCE OF 204.57 FEET;
- 122. SOUTH 11°46'14" EAST A DISTANCE OF 307.58 FEET;
- 123. SOUTH 23°05'53" EAST A DISTANCE OF 116.73 FEET;
- 124. SOUTH 30°01'15" EAST A DISTANCE OF 82.71 FEET;
- 125. SOUTH 47°54'07" EAST A DISTANCE OF 95.07 FEET;
- 126. SOUTH 57°32'33" EAST A DISTANCE OF 135.14 FEET;
- 127. SOUTH 59°49'36" EAST A DISTANCE OF 78.52 FEET;
- 128. SOUTH 63°36'24" EAST A DISTANCE OF 73.53 FEET;
- 129. SOUTH 80°04'53" EAST A DISTANCE OF 67.89 FEET; THENCE LEAVING SAID CENTERLINE OF NORTH ELKHORN CREEK AND CONTINUING WITH THE LINE OF BEVINS FOR TWO (2) CALLS:
- 130. SOUTH 08°52'18" EAST A DISTANCE OF 232.01 FEET;
- 131. SOUTH 08°54'18" EAST A DISTANCE OF 62.36 FEET TO THE POINT OF BEGINNING, CONTAINING 54.859 ACRES.

CITY OF GEORGETOWN

ORDINANCE #2021-19

REGAL SPRINGS ANNEXATION

94, 96 & 98 DELISSA DRIVE
GEORGETOWN, SCOTT CO., KY



VICINITY MAP
NOT TO SCALE

THIS DESCRIPTION IS BASED ON A FIELD SURVEY CONDUCTED UNDER THE DIRECTION OF RICHEY B. NEWTON, P.L.S. 3674 BETWEEN APRIL 15TH AND MAY 6TH OF 2021. THE BASIS OF BEARINGS IS KENTUCKY STATE PLANE NORTH ZONE COORDINATES (NAD'83) DERIVED BY STATIC GPS OBSERVATION.

THIS BEING THE SAME PROPERTY AS CONVEYED TO ROY M. CORNETT, et al IN DEED BOOK 357, PAGE 432 (DEED OF CORRECTION @ DEED BOOK 359, PAGE 481), DEED BOOK 377, PAGE 442, AND DEED BOOK 357, PAGE 426 ALL OF THE SCOTT COUNTY CLERK'S RECORDS.

14. NORTH 43°26'50" WEST A DISTANCE OF 135.33 FEET;
 15. NORTH 52°04'34" WEST A DISTANCE OF 132.64 FEET;
 16. NORTH 46°40'15" WEST A DISTANCE OF 44.59 FEET TO A CORNER TO THE PARCEL CONVEYED TO GEORGETOWN COLLEGE, INC. IN DEED BOOK 348, PAGE 484; THENCE WITH THE LINE OF SAID GEORGETOWN COLLEGE, INC FOR FIVE (5) CALLS:
 17. NORTH 35°01'19" EAST A DISTANCE OF 73.29 FEET;
 18. NORTH 37°44'39" EAST A DISTANCE OF 59.55 FEET;
 19. NORTH 29°03'42" WEST A DISTANCE OF 379.97 FEET;
 20. NORTH 23°47'30" WEST A DISTANCE OF 150.63 FEET;
 21. NORTH 82°36'09" WEST A DISTANCE OF 197.45 FEET TO A POINT ON THE LINE OF LOT 109 OF PAYNE'S LANDING SUBDIVISION, UNIT 1 AS DEPICTED IN PLAT CABINET 8, SLIDE 277; THENCE WITH THE LINE OF SAID LOT 109 FOR ONE (1) CALL:
 22. NORTH 08°20'31" EAST A DISTANCE OF 29.23 FEET TO A CORNER OF LOT 108 OF PAYNE'S LANDING SUBDIVISION, UNIT 2 AS DEPICT IN PLAT CABINET 8, SLIDE 57; THENCE WITH THE LINES OF PAYNE'S LANDING SUBDIVISION, SECTION 2, UNIT 6, AS DEPICTED IN PLAT CABINET 9, SLIDE 299, UNIT 7 AS DEPICTED IN AT CABINET 10, SLIDE 51, UNIT 9 AS DEPICTED IN PLAT CABINET 10, SLIDE 54 AND UNIT 10 AS DEPICTED IN PLAT CABINET 9, SLIDE 378 FOR THIRTY TWO (32) CALLS:
 23. NORTH 07°54'10" EAST A DISTANCE OF 359.00 FEET;
 24. NORTH 61°08'06" EAST A DISTANCE OF 117.25 FEET;
 25. NORTH 08°36'19" EAST A DISTANCE OF 7.22 FEET;
 26. NORTH 87°13'45" EAST A DISTANCE OF 56.89 FEET;
 27. SOUTH 86°04'33" EAST A DISTANCE OF 53.52 FEET;
 28. SOUTH 72°02'51" EAST A DISTANCE OF 55.63 FEET;
 29. SOUTH 49°44'48" EAST A DISTANCE OF 56.10 FEET;
 30. SOUTH 34°26'54" EAST A DISTANCE OF 53.47 FEET;
 31. SOUTH 30°17'24" EAST A DISTANCE OF 32.07 FEET;
 32. NORTH 44°18'40" EAST A DISTANCE OF 106.56 FEET;
 33. NORTH 48°42'41" EAST A DISTANCE OF 68.58 FEET;
 34. NORTH 52°13'15" EAST A DISTANCE OF 78.20 FEET;
 35. NORTH 54°31'04" EAST A DISTANCE OF 127.98 FEET;
 36. NORTH 47°19'28" EAST A DISTANCE OF 45.05 FEET;
 37. NORTH 33°38'46" EAST A DISTANCE OF 67.05 FEET;
 38. NORTH 20°03'10" EAST A DISTANCE OF 32.81 FEET;
 39. NORTH 20°03'10" EAST A DISTANCE OF 44.66 FEET;
 40. NORTH 17°12'17" EAST A DISTANCE OF 17.92 FEET;
 41. NORTH 10°51'09" EAST A DISTANCE OF 24.97 FEET;
 42. SOUTH 81°02'23" EAST A DISTANCE OF 16.54 FEET;
 43. NORTH 05°27'58" EAST A DISTANCE OF 11.76 FEET;
 44. NORTH 05°27'58" EAST A DISTANCE OF 434.11 FEET;
 45. NORTH 05°27'58" EAST A DISTANCE OF 461.91 FEET;
 46. NORTH 05°41'20" EAST A DISTANCE OF 65.21 FEET;
 47. NORTH 21°15'01" EAST A DISTANCE OF 437.05 FEET;
 48. NORTH 13°23'07" EAST A DISTANCE OF 158.29 FEET;
 49. NORTH 08°13'33" EAST A DISTANCE OF 91.67 FEET;
 50. NORTH 11°39'44" EAST A DISTANCE OF 162.74 FEET;
 51. NORTH 25°58'06" EAST A DISTANCE OF 65.68 FEET;
 52. NORTH 16°21'46" EAST A DISTANCE OF 67.37 FEET;
 53. NORTH 18°32'16" EAST A DISTANCE OF 82.52 FEET;
 54. NORTH 23°56'36" EAST A DISTANCE OF 27.42 FEET TO A CORNER OF THE PARCEL CONVEYED TO CATHOLIC EDUCATION OPPORTUNITIES, INC. IN DEED BOOK 421, PAGE 26; THENCE WITH THE LINE OF SAID CATHOLIC EDUCATION OPPORTUNITIES, INC. FOR TWENTY SEVEN (27) CALLS:
 55. NORTH 15°48'46" EAST A DISTANCE OF 39.55 FEET;
 56. NORTH 11°34'20" EAST A DISTANCE OF 39.86 FEET;
 57. NORTH 05°06'00" EAST A DISTANCE OF 81.00 FEET;
 58. NORTH 03°32'38" EAST A DISTANCE OF 42.15 FEET;
 59. NORTH 06°25'14" EAST A DISTANCE OF 69.42 FEET;
 60. NORTH 11°56'18" WEST A DISTANCE OF 40.72 FEET;
 61. NORTH 19°32'16" WEST A DISTANCE OF 30.51 FEET;
 62. NORTH 31°24'18" WEST A DISTANCE OF 48.00 FEET;
 63. NORTH 35°45'00" WEST A DISTANCE OF 90.33 FEET;
 64. NORTH 49°20'16" WEST A DISTANCE OF 107.62 FEET;
 65. NORTH 49°21'14" WEST A DISTANCE OF 42.00 FEET;
 66. NORTH 52°06'42" WEST A DISTANCE OF 36.91 FEET;
 67. NORTH 55°02'40" WEST A DISTANCE OF 30.94 FEET;
 68. NORTH 56°59'10" WEST A DISTANCE OF 36.37 FEET;
 69. NORTH 53°49'33" WEST A DISTANCE OF 84.04 FEET;
 70. NORTH 47°34'09" WEST A DISTANCE OF 72.49 FEET;
 71. NORTH 48°27'09" WEST A DISTANCE OF 55.93 FEET;
 72. NORTH 50°08'03" WEST A DISTANCE OF 60.32 FEET;
 73. NORTH 50°28'48" WEST A DISTANCE OF 47.27 FEET;
 74. NORTH 62°38'10" WEST A DISTANCE OF 9.90 FEET;
 75. NORTH 75°39'00" WEST A DISTANCE OF 74.08 FEET;
 76. NORTH 64°48'56" WEST A DISTANCE OF 98.46 FEET;
 77. NORTH 68°24'48" WEST A DISTANCE OF 53.01 FEET;
 78. NORTH 76°55'10" WEST A DISTANCE OF 114.46 FEET;
 79. NORTH 79°27'02" WEST A DISTANCE OF 52.83 FEET;
 80. NORTH 86°51'21" WEST A DISTANCE OF 97.14 FEET;
 81. NORTH 87°34'59" WEST A DISTANCE OF 87.84 FEET TO A CORNER OF THE PARCEL CONVEYED TO CANEWOOD HOA GC, LLC IN DEED BOOK 373, PAGE 212; THENCE WITH THE LINE OF SAID CANEWOOD HOA GC, LLC FOR ONE (1) CALL:

104. SOUTH 20°35'08" EAST A DISTANCE OF 110.08 FEET;
 105. SOUTH 16°14'47" EAST A DISTANCE OF 127.74 FEET;
 106. SOUTH 18°46'21" EAST A DISTANCE OF 141.90 FEET;
 107. SOUTH 04°32'49" WEST A DISTANCE OF 181.65 FEET;
 108. SOUTH 19°22'30" WEST A DISTANCE OF 181.42 FEET;
 109. SOUTH 35°10'19" WEST A DISTANCE OF 210.20 FEET;
 110. SOUTH 35°14'52" WEST A DISTANCE OF 108.42 FEET;
 111. SOUTH 35°14'52" WEST A DISTANCE OF 32.87 FEET;
 112. SOUTH 38°27'03" WEST A DISTANCE OF 92.02 FEET;
 113. SOUTH 34°22'16" WEST A DISTANCE OF 84.05 FEET;
 114. SOUTH 27°58'47" WEST A DISTANCE OF 91.74 FEET;
 115. SOUTH 23°04'22" WEST A DISTANCE OF 81.80 FEET;
 116. SOUTH 20°51'38" WEST A DISTANCE OF 115.12 FEET;
 117. SOUTH 10°43'20" WEST A DISTANCE OF 205.57 FEET;
 118. SOUTH 04°30'12" WEST A DISTANCE OF 114.31 FEET;
 119. SOUTH 00°25'57" WEST A DISTANCE OF 149.81 FEET;
 120. SOUTH 03°38'06" WEST A DISTANCE OF 120.30 FEET;
 121. SOUTH 01°22'07" WEST A DISTANCE OF 204.57 FEET;
 122. SOUTH 11°46'14" EAST A DISTANCE OF 307.58 FEET;
 123. SOUTH 23°05'51" EAST A DISTANCE OF 116.73 FEET;
 124. SOUTH 30°01'15" EAST A DISTANCE OF 82.71 FEET;
 125. SOUTH 47°54'07" EAST A DISTANCE OF 95.07 FEET;
 126. SOUTH 57°32'33" EAST A DISTANCE OF 135.14 FEET;
 127. SOUTH 59°49'36" EAST A DISTANCE OF 78.52 FEET;
 128. SOUTH 63°36'24" EAST A DISTANCE OF 73.53 FEET;
 129. SOUTH 80°04'53" EAST A DISTANCE OF 67.89 FEET; THENCE LEAVING SAID CENTERLINE OF NORTH ELKHORN CREEK AND CONTINUING WITH THE LINE OF BEVINS FOR TWO (2) CALLS:
 130. SOUTH 08°52'18" EAST A DISTANCE OF 232.01 FEET;
 131. SOUTH 08°54'18" EAST A DISTANCE OF 62.36 FEET TO THE POINT OF BEGINNING, CONTAINING 54.859 ACRES.

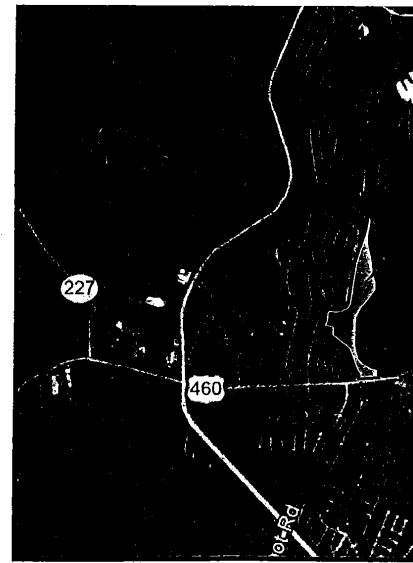
THIS DESCRIPTION IS BASED ON A FIELD SURVEY CONDUCTED UNDER THE DIRECTION OF RICHEY B. NEWTON, P.L.S. 3674 BETWEEN APRIL 15TH AND MAY 6TH OF 2021. THE BASIS OF BEARINGS IS KENTUCKY STATE PLANE NORTH ZONE COORDINATES (NAD'83) DERIVED BY STATIC GPS OBSERVATION.
 THIS BEING THE SAME PROPERTY AS CONVEYED TO ROY M. CORNETT, et al IN DEED BOOK 357, PAGE 432 (DEED OF CORRECTION @ DEED BOOK 359, PAGE 481), DEED BOOK 377, PAGE 442, AND DEED BOOK 357, PAGE 426 ALL OF THE SCOTT COUNTY CLERK'S RECORDS.

SURVEYOR'S CERTIFICATE

I CERTIFY THAT THIS PLAT DEPICTS A SURVEY CONDUCTED UNDER MY DIRECTION. THE BASIS OF BEARINGS FOR THIS SURVEY IS BASED ON GPS STATIC OBSERVATIONS TAKEN APRIL 15, 2021 AND PROJECTED TO KENTUCKY STATE PLANE COORDINATES (NORTH ZONE) NAD'83. THIS PLAT AND SURVEY MEET THE MINIMUM STANDARDS OR AN "URBAN" SURVEY AS DEFINED IN 201 KAR 18:150.

THE FIELD SURVEY WAS CONDUCTED 4/15/2021 AND 5/6/2021 USING TOPCON HIPER V DUAL FREQUENCY RECEIVERS IN STATIC AND RTK MODES. THE RELATIVE PRECISION OF THE SURVEY IS +-0.03' +100 PPM.

[Signature]
 RICHEY B. NEWTON KY PLS #3674 12/1/21
 PLAT CERTIFICATION DATE



SURVEY NOTES

1. THE PURPOSE OF THIS PLAT IS TO SHOW THE ANNEXATION PROPERTY IS SUBJECT TO ANY RESTRICTIONS OR ANY CONDITIONS OF SAID PLAT AND PLAT CABINET 11, SLIDE 120 C.
2. EXISTING CITY OF GEORGETOWN AND PARCELS DEPICTED HEREON ARE BASED ON KENTUCKY STATE PLANE COORDINATES (NORTH ZONE) NAD'83.
3. COORDINATE VALUES DEPICTED HEREON DO NOT SUPERCEDE PHYSICAL MONUMENTS.
4. THE PROPERTY DEPICTED HEREON IS NOT TO BE RECORDED, APPURTENANT OR OTHERWISE.

③

20°35'08" EAST A DISTANCE OF 110.08 FEET;
 TH 16°14'47" EAST A DISTANCE OF 127.74 FEET;
 TH 18°46'21" EAST A DISTANCE OF 141.90 FEET;
 TH 04°32'49" WEST A DISTANCE OF 181.65 FEET;
 TH 19°22'30" WEST A DISTANCE OF 181.42 FEET;
 TH 35°10'19" WEST A DISTANCE OF 210.20 FEET;
 TH 35°14'52" WEST A DISTANCE OF 108.42 FEET;
 TH 35°14'52" WEST A DISTANCE OF 32.87 FEET;
 TH 38°27'03" WEST A DISTANCE OF 92.02 FEET;
 TH 34°22'16" WEST A DISTANCE OF 84.05 FEET;
 TH 27°58'47" WEST A DISTANCE OF 91.74 FEET;
 TH 23°04'22" WEST A DISTANCE OF 81.80 FEET;
 TH 20°51'38" WEST A DISTANCE OF 115.12 FEET;
 TH 10°43'20" WEST A DISTANCE OF 205.57 FEET;
 TH 04°30'12" WEST A DISTANCE OF 114.31 FEET;
 TH 00°25'57" WEST A DISTANCE OF 149.81 FEET;
 TH 03°38'06" WEST A DISTANCE OF 120.30 FEET;
 TH 01°22'07" WEST A DISTANCE OF 204.57 FEET;
 TH 11°46'14" EAST A DISTANCE OF 307.58 FEET;
 TH 23°05'51" EAST A DISTANCE OF 116.73 FEET;
 TH 30°01'15" EAST A DISTANCE OF 82.71 FEET;
 TH 47°54'07" EAST A DISTANCE OF 95.07 FEET;
 TH 57°32'33" EAST A DISTANCE OF 135.14 FEET;
 TH 59°49'36" EAST A DISTANCE OF 78.52 FEET;
 TH 63°36'24" EAST A DISTANCE OF 73.53 FEET;
 TH 80°04'53" EAST A DISTANCE OF 67.89 FEET; THENCE LEAVING
 D CENTERLINE OF NORTH ELKHORN CREEK AND CONTINUING WITH
 LINE OF BEVINS FOR TWO (2) CALLS:

TH 08°52'18" EAST A DISTANCE OF 232.01 FEET;
 TH 08°54'18" EAST A DISTANCE OF 62.36 FEET TO THE POINT OF
 INNING, CONTAINING 54.859 ACRES.

IPTION IS BASED ON A FIELD SURVEY CONDUCTED UNDER THE
 OF RICHEY B. NEWTON, P.L.S. 3674 BETWEEN APRIL 15TH AND
 2021. THE BASIS OF BEARINGS IS KENTUCKY STATE PLANE
 COORDINATES (NAD'83) DERIVED BY STATIC GPS OBSERVATION.

THE SAME PROPERTY AS CONVEYED TO ROY M. CORNETT, et al IN
 357, PAGE 432 (DEED OF CORRECTION @ DEED BOOK 359, PAGE
 BOOK 377, PAGE 442, AND DEED BOOK 357, PAGE 426 ALL OF
 COUNTY CLERK'S RECORDS.




VICINITY MAP
NOT TO SCALE

SURVEYOR'S CERTIFICATE

I CERTIFY THAT THIS PLAT DEPICTS A SURVEY CONDUCTED UNDER MY
 DIRECTION. THE BASIS OF BEARINGS FOR THIS SURVEY IS BASED ON GPS
 STATIC OBSERVATIONS TAKEN APRIL 15, 2021 AND PROJECTED TO KENTUCKY
 STATE PLANE COORDINATES (NORTH ZONE) NAD'83. THIS PLAT AND SURVEY
 MEET THE MINIMUM STANDARDS OR AN "URBAN" SURVEY AS DEFINED IN 201
 KAR 18:150.

THE FIELD SURVEY WAS CONDUCTED 4/15/2021 AND 5/6/2021 USING
 TOPCON HIPER V DUAL FREQUENCY RECEIVERS IN STATIC AND RTK MODES.
 THE RELATIVE PRECISION OF THE SURVEY IS +/-0.03' +100 PPM.


 RICHEY B. NEWTON KY PLS #3674 12/1/21 PLAT CERTIFICATION DATE

SURVEY NOTES

1. THE PURPOSE OF THIS PLAT IS TO DEPICT AN AREA FOR ANNEXATION ONLY. THE ANNEXATION PROPERTY IS SUBJECT TO ALL EASEMENTS, NOTES, RESTRICTIONS OR ANY CONDITIONS DEPICTED ON PLAT CABINET 11, SLIDE 100 AND PLAT CABINET 11, SLIDE 120 OF THE SCOTT COUNTY CLERK'S RECORDS;
2. EXISTING CITY OF GEORGETOWN ANNEXATION ORDINANCE BOUNDARY LOCATIONS DEPICTED HEREON ARE BASED ON KENTUCKY SECRETARY OF STATE CITY BOUNDARY GIS SHAPE FILES PROJECTED TO KENTUCKY STATE PLANE COORDINATES (NORTH ZONE) NAD'83;
3. COORDINATE VALUES DEPICTED HEREON ARE FOR REFERENCE ONLY AND DO NOT SUPERCEDE PHYSICAL MONUMENTS;
4. THE PROPERTY DEPICTED HEREON IS SUBJECT TO ALL EASEMENTS OF RECORD, APPURTENANT OR OTHERWISE.

STATE OF KENTUCKY
 R.B. NEWTON
 3674
 LICENSED
 PROFESSIONAL
 LAND SURVEYOR

4

ROY M. CORNETT PARCEL
 94.96 & 98 DELISSA DRIVE

ANNEXATION PLAT
 SHEET

LINE	BEARING	DISTANCE	LINE	BEARING	DISTANCE	LINE	BEARING	DISTANCE	CURVE	RADIUS	ARC LENGTH	CHORD LENGTH	CHORD BEARING	DELTA ANGLE
L1	S 85°06'05" W	60.15'	L65	N 55°02'40" W	30.94'	L109	S 35°14'52" W	32.87'	C1	87.00'	110.74'	103.41'	N 58°33'42" W	72°55'42"
L2	S 84°58'30" W	208.69'	L66	N 56°59'10" W	36.37'	L110	S 38°27'03" W	92.02'	C2	925.00'	143.86'	143.72'	S 80°31'11" W	8°54'39"
L3	S 76°03'53" W	51.31'	L67	N 53°49'33" W	84.04'	L111	S 34°22'16" W	84.05'						
L4	N 85°44'40" W	15.80'	L68	N 47°34'09" W	72.49'	L112	S 27°58'47" W	91.74'						
L5	N 20°46'39" E	66.99'	L69	N 48°27'09" W	55.93'	L113	S 23°04'22" W	81.80'						
L6	N 48°17'43" W	168.22'	L70	N 50°08'03" W	60.32'	L114	S 20°51'38" W	115.12'						
L7	N 31°54'10" W	75.85'	L71	N 50°28'48" W	47.27'	L115	S 10°43'20" W	205.57'						
L8	N 24°07'24" W	173.41'	L72	N 62°38'10" W	9.90'	L116	S 04°30'12" W	114.31'						
L9	N 22°19'51" W	201.69'	L73	N 75°39'00" W	74.08'	L117	S 00°25'57" W	149.81'						
L10	N 22°24'59" W	100.21'	L74	N 64°48'56" W	98.46'	L118	S 03°38'06" W	120.30'						
L11	N 40°06'16" W	102.50'	L75	N 68°24'48" W	53.01'	L119	S 01°22'07" W	204.57'						
L12	N 43°26'50" W	135.33'	L76	N 76°55'10" W	114.46'	L120	S 11°46'14" E	307.58'						
L13	N 52°04'34" W	132.64'	L77	N 79°27'02" W	52.83'	L121	S 23°05'51" E	116.73'						
L14	N 46°40'15" W	44.59'	L78	N 86°51'21" W	97.14'	L122	S 30°01'15" E	82.71'						
L15	N 35°01'19" E	73.29'	L79	N 87°34'59" W	87.84'	L123	S 47°54'07" E	95.07'						
L16	N 37°44'39" E	59.55'	L80	N 12°34'42" E	14.78'	L124	S 57°32'33" E	135.14'						
L17	N 29°03'42" W	379.97'	L81	S 87°51'30" E	86.19'	L125	S 59°49'36" E	78.52'						
L18	N 23°47'30" W	150.63'	L82	S 86°06'21" E	84.95'	L126	S 63°36'24" E	73.53'						
L19	N 82°36'09" W	197.45'	L83	S 82°23'08" E	42.93'	L127	S 80°04'53" E	67.89'						
L20	N 08°20'31" E	29.23'	L84	S 83°31'32" E	113.69'	L128	S 08°52'18" E	232.01'						
L21	N 07°54'10" E	359.00'	L85	S 69°46'44" E	56.31'	L129	S 08°54'18" E	62.36'						
L22	N 61°08'06" E	117.25'	L86	S 70°09'11" E	88.50'									
L23	N 08°36'19" E	7.22'	L87	S 64°38'30" E	127.59'									
L24	N 87°13'45" E	56.89'	L88	S 55°02'26" E	50.02'									
L25	S 86°04'33" E	53.52'	L89	S 53°06'59" E	72.21'									
L26	S 72°02'51" E	55.63'	L90	S 47°58'05" E	64.23'									
L27	S 49°44'48" E	56.10'	L91	S 49°35'56" E	147.20'									
L28	S 34°26'54" E	53.47'	L92	S 52°47'20" E	235.00'									
L29	S 30°17'24" E	32.07'	L93	S 40°01'23" E	110.09'									
L30	N 44°18'40" E	106.56'	L94	S 27°49'49" E	97.20'									
L31	N 48°42'41" E	68.58'	L95	S 09°26'40" E	92.52'									
L32	N 52°13'15" E	78.20'	L96	S 11°01'11" W	43.07'									
L33	N 54°31'04" E	127.98'	L97	S 80°52'16" E	46.00'									
L34	N 47°19'28" E	45.05'	L98	S 10°32'54" W	185.36'									
L35	N 33°38'46" E	67.05'	L99	S 02°57'20" E	164.32'									
L36	N 20°03'10" E	32.81'	L100	S 04°58'32" E	396.70'									
L37	N 20°03'10" E	44.66'	L101	S 03°09'58" E	569.39'									
L38	N 17°12'17" E	17.92'	L102	S 20°35'08" E	110.08'									
L39	N 10°51'09" E	24.97'	L103	S 16°14'47" E	127.74'									
L40	S 81°02'23" E	16.54'	L104	S 18°46'21" E	141.90'									
L41	N 05°27'58" E	11.76'	L105	S 04°32'49" W	181.65'									
L42	N 05°27'58" E	434.11'	L106	S 19°22'30" W	181.42'									
L43	N 05°27'58" E	461.91'	L107	S 35°10'19" W	210.20'									
L44	N 05°41'20" E	65.21'	L108	S 35°14'52" W	108.42'									
L45	N 21°15'01" E	437.05'												
L46	N 13°23'07" E	158.29'												
L47	N 08°13'33" E	91.67'												
L48	N 11°39'44" E	162.74'												
L49	N 25°58'06" E	65.68'												
L50	N 16°21'46" E	67.37'												
L51	N 18°32'16" E	82.52'												
L52	N 23°56'36" E	27.42'												
L53	N 15°48'46" E	39.55'												
L54	N 11°34'20" E	39.86'												
L55	N 05°06'00" E	81.00'												
L56	N 03°32'38" E	42.15'												
L57	N 06°25'14" E	69.42'												
L58	N 11°56'18" W	40.72'												
L59	N 19°32'16" W	30.51'												
L60	N 31°24'18" W	48.00'												
L61	N 35°45'00" W	90.33'												
L62	N 49°20'16" W	107.62'												
L63	N 49°21'14" W	42.00'												
L64	N 52°06'42" W	36.91'												

SURVEYOR'S CERTIFICATE

I CERTIFY THAT THIS PLAT DEPICTS A SURVEY CONDUCTED UNDER MY DIRECTION. THE BASIS OF BEARINGS FOR THIS SURVEY IS BASED ON GPS STATIC OBSERVATIONS TAKEN APRIL 15, 2021 AND PROJECTED TO KENTUCKY STATE PLANE COORDINATES (NORTH ZONE) NAD'83. THIS PLAT AND SURVEY MEET THE MINIMUM STANDARDS OR AN "URBAN" SURVEY AS DEFINED IN 201 KAR 18:150.

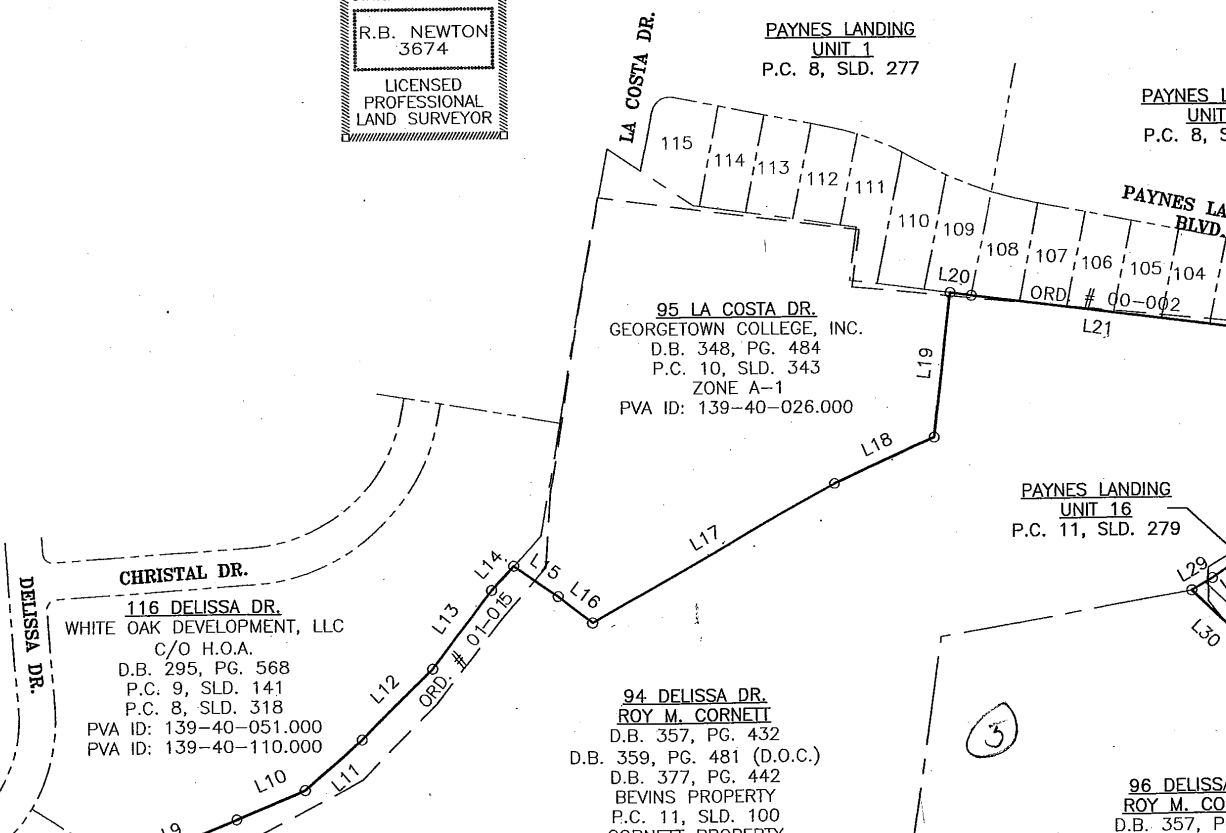
THE FIELD SURVEY WAS CONDUCTED 4/15/2021 AND 5/6/2021 USING TOPCON HIPER V DUAL FREQUENCY RECEIVERS IN STATIC AND RTK MODES. THE RELATIVE PRECISION OF THE SURVEY IS + -0.03' +100 PPM.

[Signature]
 RICHIEY B. NEWTON

KY PLS #3674

12/1/21

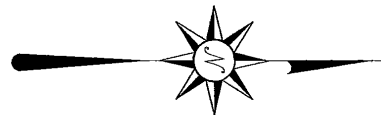
PLAT CERTIFICATION DATE



3

96 DELISSA
 ROY M. CORNETT
 D.B. 357, PG. 432

BEARING	DISTANCE	CURVE	RADIUS	ARC LENGTH	CHORD LENGTH	CHORD BEARING	DELTA ANGLE
S 35°14'52" W	32.87'	C1	87.00'	110.74'	103.41'	N 58°33'42" W	72°55'42"
S 38°27'03" W	92.02'	C2	925.00'	143.86'	143.72'	S 80°31'11" W	8°54'39"
S 34°22'16" W	84.05'						
S 27°58'47" W	91.74'						
S 23°04'22" W	81.80'						
S 20°51'38" W	115.12'						
S 10°43'20" W	205.57'						
S 04°30'12" W	114.31'						
S 00°25'57" W	149.81'						
S 03°38'06" W	120.30'						
S 01°22'07" W	204.57'						
S 11°46'14" E	307.58'						
S 23°05'51" E	116.73'						
S 30°01'15" E	82.71'						
S 47°54'07" E	95.07'						
S 57°32'33" E	135.14'						
S 59°49'36" E	78.52'						
S 63°36'24" E	73.53'						
S 80°04'53" E	67.89'						
S 08°52'18" E	232.01'						
S 08°54'18" E	62.36'						



SURVEYOR'S CERTIFICATE

I CERTIFY THAT THIS PLAT DEPICTS A SURVEY CONDUCTED UNDER MY DIRECTION. THE BASIS OF BEARINGS FOR THIS SURVEY IS BASED ON GPS STATIC OBSERVATIONS TAKEN APRIL 15, 2021 AND PROJECTED TO KENTUCKY STATE PLANE COORDINATES (NORTH ZONE) NAD'83. THIS PLAT AND SURVEY MEET THE MINIMUM STANDARDS OR AN "URBAN" SURVEY AS DEFINED IN 201 KAR 18:150.

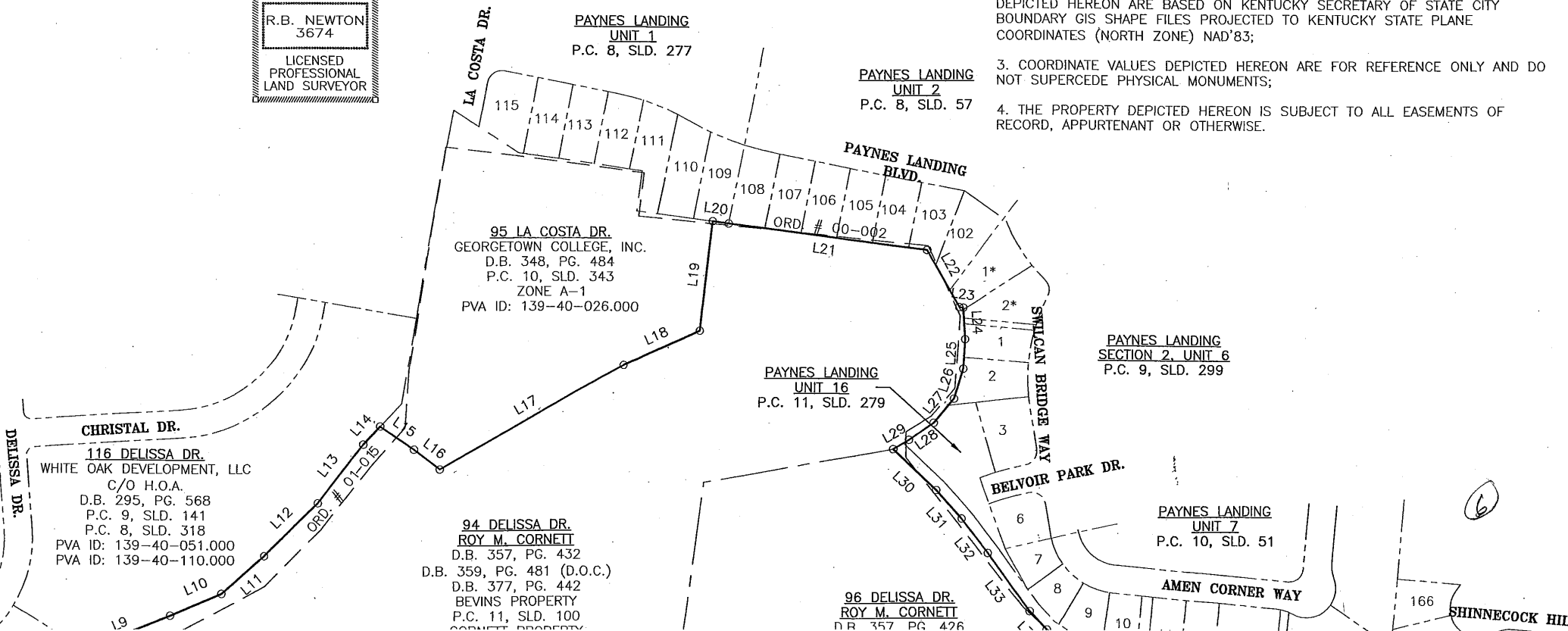
THE FIELD SURVEY WAS CONDUCTED 4/15/2021 AND 5/6/2021 USING TOPCON HIPER V DUAL FREQUENCY RECEIVERS IN STATIC AND RTK MODES. THE RELATIVE PRECISION OF THE SURVEY IS +−0.03' +100 PPM.

[Signature]
 RICHIE B. NEWTON KY PLS #3674 12/1/21 PLAT CERTIFICATION DATE

STATE of KENTUCKY
 R.B. NEWTON
 3674
 LICENSED
 PROFESSIONAL
 LAND SURVEYOR

SURVEY NOTES

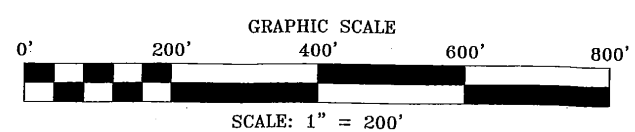
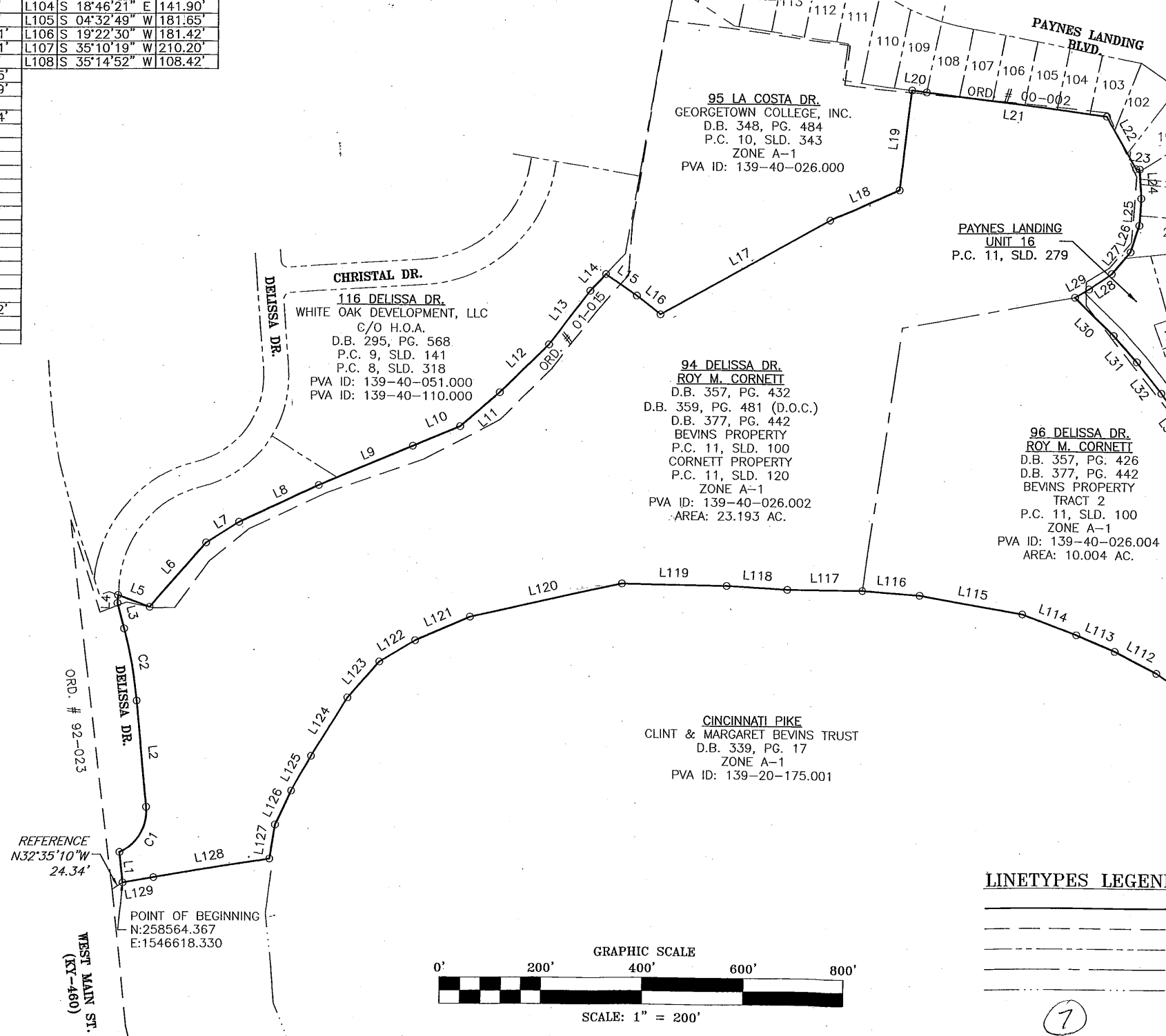
1. THE PURPOSE OF THIS PLAT IS TO DEPICT AN AREA FOR ANNEXATION ONLY. THE ANNEXATION PROPERTY IS SUBJECT TO ALL EASEMENTS, NOTES, RESTRICTIONS OR ANY CONDITIONS DEPICTED ON PLAT CABINET 11, SLIDE 100 AND PLAT CABINET 11, SLIDE 120 OF THE SCOTT COUNTY CLERK'S RECORDS;
2. EXISTING CITY OF GEORGETOWN ANNEXATION ORDINANCE BOUNDARY LOCATIONS DEPICTED HEREON ARE BASED ON KENTUCKY SECRETARY OF STATE CITY BOUNDARY GIS SHAPE FILES PROJECTED TO KENTUCKY STATE PLANE COORDINATES (NORTH ZONE) NAD'83;
3. COORDINATE VALUES DEPICTED HEREON ARE FOR REFERENCE ONLY AND DO NOT SUPERCEDE PHYSICAL MONUMENTS;
4. THE PROPERTY DEPICTED HEREON IS SUBJECT TO ALL EASEMENTS OF RECORD, APPURTENANT OR OTHERWISE.



6

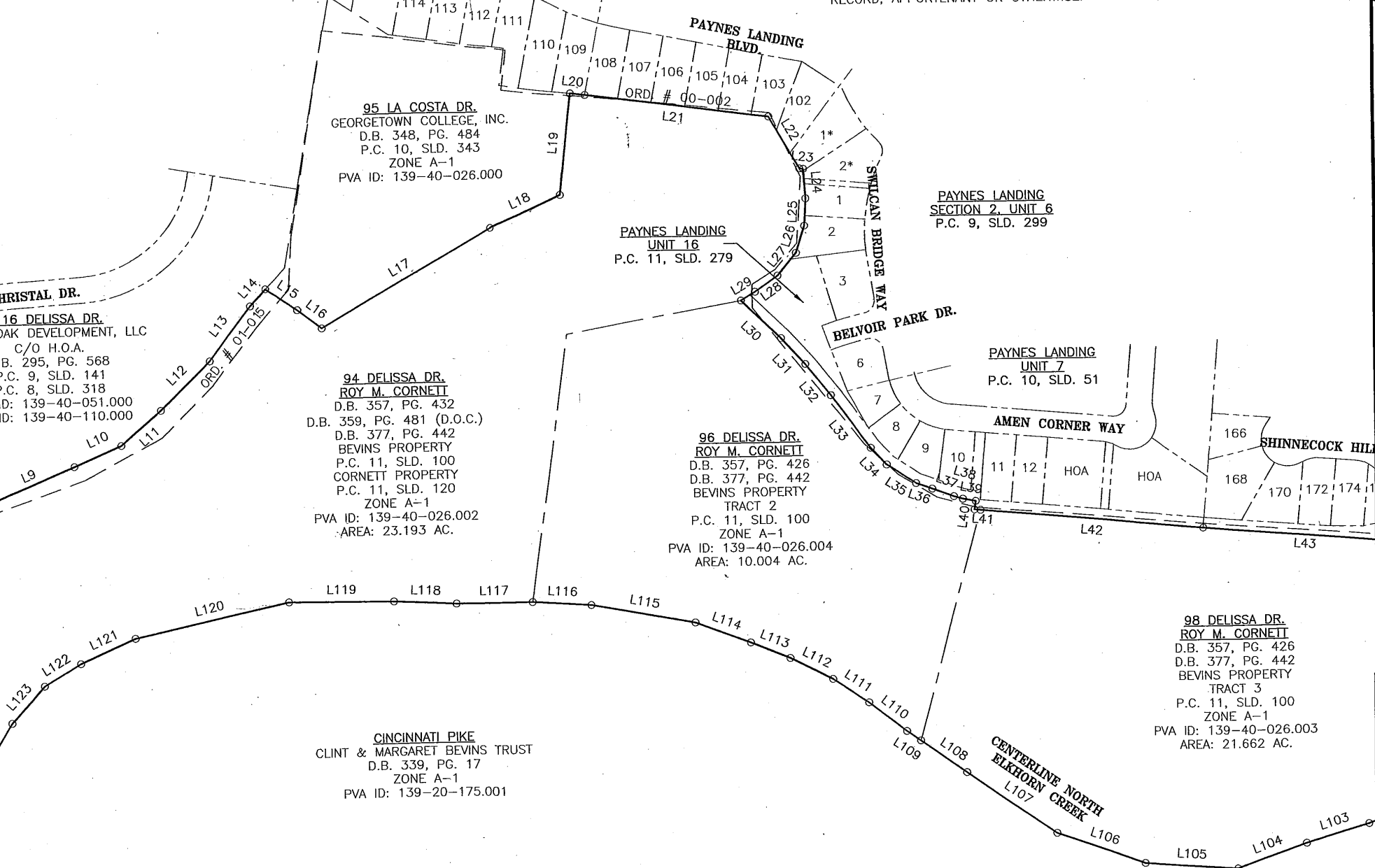
SHINNECOCK HILL

L40	S 81°02'23"	E 16.54'	L104	S 18°46'21"	E 141.90'
L41	N 05°27'58"	E 11.76'	L105	S 04°32'49"	W 181.65'
L42	N 05°27'58"	E 434.11'	L106	S 19°22'30"	W 181.42'
L43	N 05°27'58"	E 461.91'	L107	S 35°10'19"	W 210.20'
L44	N 05°41'20"	E 65.21'	L108	S 35°14'52"	W 108.42'
L45	N 21°15'01"	E 437.05'			
L46	N 13°23'07"	E 158.29'			
L47	N 08°13'33"	E 91.67'			
L48	N 11°39'44"	E 162.74'			
L49	N 25°58'06"	E 65.68'			
L50	N 16°21'46"	E 67.37'			
L51	N 18°32'16"	E 82.52'			
L52	N 23°56'36"	E 27.42'			
L53	N 15°48'46"	E 39.55'			
L54	N 11°34'20"	E 39.86'			
L55	N 05°06'00"	E 81.00'			
L56	N 03°32'38"	E 42.15'			
L57	N 06°25'14"	E 69.42'			
L58	N 11°56'18"	W 40.72'			
L59	N 19°32'16"	W 30.51'			
L60	N 31°24'18"	W 48.00'			
L61	N 35°45'00"	W 90.33'			
L62	N 49°20'16"	W 107.62'			
L63	N 49°21'14"	W 42.00'			
L64	N 52°06'42"	W 36.91'			




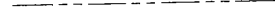



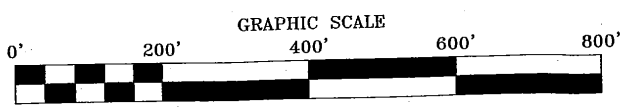
ROY M. CORNETT PARCEL
04 96 & 98 DELISSA DRIVE

ANNEXATION PLAT
SHEET



LINETYPES LEGEND

-  BOUNDARY/ANNEXATION LINE
-  EXISTING GEORGETOWN ANNEXATION ORDINANCE BOUNDARY
-  APPROXIMATE ADJOINING BOUNDARY LINE
-  INTERIOR TRACT LINE
-  CENTERLINE OF THE NORTH FORK OF ELKHORN CREEK



SCALE: 1" = 200'

8

CURVE	RADIUS	ARC LENGTH	CHORD LENGTH	CHORD BEARING	DELTA ANGLE	LINE	BEARING	DISTANCE	LINE	BEARING	DISTANCE
C1	87.00'	110.74'	103.41'	N 58°33'42" W	72°55'42"	L1	S 85°06'05" W	60.15'	L65	N 55°02'40" W	30.94'
C2	925.00'	143.86'	143.72'	S 80°31'11" W	8°54'39"	L2	S 84°58'30" W	208.69'	L66	N 56°59'10" W	36.37'
						L3	S 76°03'53" W	51.31'	L67	N 53°49'33" W	84.04'
						L4	N 85°44'40" W	15.80'	L68	N 47°34'09" W	72.49'
						L5	N 20°46'39" E	66.99'	L69	N 48°27'09" W	55.93'
						L6	N 48°17'43" W	168.22'	L70	N 50°08'03" W	60.32'
						L7	N 31°54'10" W	75.85'	L71	N 50°28'48" W	47.27'
						L8	N 24°07'24" W	173.41'	L72	N 62°38'10" W	9.90'
						L9	N 22°19'51" W	201.69'	L73	N 75°39'00" W	74.08'
						L10	N 22°24'59" W	100.21'	L74	N 64°48'56" W	98.46'
						L11	N 40°06'16" W	102.50'	L75	N 68°24'48" W	53.01'
						L12	N 43°26'50" W	135.33'	L76	N 76°55'10" W	114.46'
						L13	N 52°04'34" W	132.64'	L77	N 79°27'02" W	52.83'
						L14	N 46°40'15" W	44.59'	L78	N 86°51'21" W	97.14'
						L15	N 35°01'19" E	73.29'	L79	N 87°34'59" W	87.84'
						L16	N 37°44'39" E	59.55'	L80	N 12°34'42" E	14.78'
						L17	N 29°03'42" W	379.97'	L81	S 87°51'30" E	86.19'
						L18	N 23°47'30" W	150.63'	L82	S 86°06'21" E	84.95'
						L19	N 82°36'09" W	197.45'	L83	S 82°23'08" E	42.93'
						L20	N 08°20'31" E	29.23'	L84	S 83°31'32" E	113.69'
						L21	N 07°54'10" E	359.00'	L85	S 69°46'44" E	56.31'
						L22	N 61°08'06" E	117.25'	L86	S 70°09'11" E	88.50'
						L23	N 08°36'19" E	7.22'	L87	S 64°38'30" E	127.59'
						L24	N 87°13'45" E	56.89'	L88	S 55°02'26" E	50.02'
						L25	S 86°04'33" E	53.52'	L89	S 53°06'59" E	72.21'
						L26	S 72°02'51" E	55.63'	L90	S 47°58'05" E	64.23'
						L27	S 49°44'48" E	56.10'	L91	S 49°35'56" E	147.20'
						L28	S 34°26'54" E	53.47'	L92	S 52°47'20" E	235.00'
						L29	S 30°17'24" E	32.07'	L93	S 40°01'23" E	110.09'
						L30	N 44°18'40" E	106.56'	L94	S 27°49'49" E	97.20'
						L31	N 48°42'41" E	68.58'	L95	S 09°26'40" E	92.52'
						L32	N 52°13'15" E	78.20'	L96	S 11°01'11" W	43.07'
						L33	N 54°31'04" E	127.98'	L97	S 80°52'16" E	46.00'
						L34	N 47°19'28" E	45.05'	L98	S 10°32'54" W	185.36'
						L35	N 33°38'46" E	67.05'	L99	S 02°57'20" E	164.32'
						L36	N 20°03'10" E	32.81'	L100	S 04°58'32" E	396.70'
						L37	N 20°03'10" E	44.66'	L101	S 03°09'58" E	569.39'
						L38	N 17°12'17" E	17.92'	L102	S 20°35'08" E	110.08'
						L39	N 10°51'09" E	24.97'	L103	S 16°14'47" E	127.74'
						L40	S 81°02'23" E	16.54'	L104	S 18°46'21" E	141.90'
						L41	N 05°27'58" E	11.76'	L105	S 04°32'49" W	181.65'
						L42	N 05°27'58" E	434.11'	L106	S 19°22'30" W	181.42'
						L43	N 05°27'58" E	461.91'	L107	S 35°10'19" W	210.20'
						L44	N 05°41'20" E	65.21'	L108	S 35°14'52" W	108.42'
						L45	N 21°15'01" E	437.05'	L109	S 35°14'52" W	32.87'
						L46	N 13°23'07" E	158.29'	L110	S 38°27'03" W	92.02'
						L47	N 08°13'33" E	91.67'	L111	S 34°22'16" W	84.05'
						L48	N 11°39'44" E	162.74'	L112	S 27°58'47" W	91.74'
						L49	N 25°58'06" E	65.68'	L113	S 23°04'22" W	81.80'
						L50	N 16°21'46" E	67.37'	L114	S 20°51'38" W	115.12'
						L51	N 18°32'16" E	82.52'	L115	S 10°43'20" W	205.57'
						L52	N 23°56'36" E	27.42'	L116	S 04°30'12" W	114.31'
						L53	N 15°48'46" E	39.55'	L117	S 00°25'57" W	149.81'
						L54	N 11°34'20" E	39.86'	L118	S 03°38'06" W	120.30'
						L55	N 05°06'00" E	81.00'	L119	S 01°22'07" W	204.57'
						L56	N 03°32'38" E	42.15'	L120	S 11°46'14" E	307.58'
						L57	N 06°25'14" E	69.42'	L121	S 23°05'51" E	116.73'
						L58	N 11°56'18" W	40.72'	L122	S 30°01'15" E	82.71'
						L59	N 19°32'16" W	30.51'	L123	S 47°54'07" E	95.07'
						L60	N 31°24'18" W	48.00'	L124	S 57°32'33" E	135.14'
						L61	N 35°45'00" W	90.33'	L125	S 59°49'36" E	78.52'
						L62	N 49°20'16" W	107.62'	L126	S 63°36'24" E	73.53'
						L63	N 49°21'14" W	42.00'	L127	S 80°04'53" E	67.89'
						L64	N 52°06'42" W	36.91'	L128	S 08°52'18" E	232.01'
									L129	S 08°54'18" E	62.36'

SURVEYOR'S CERTIFICATE

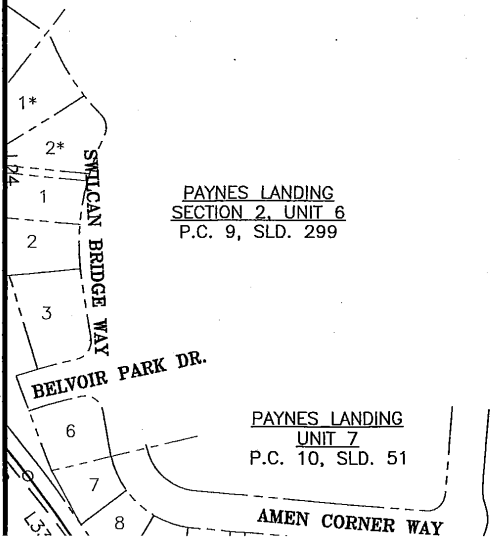
I CERTIFY THAT THIS PLAT DEPICTS A SURVEY CONDUCTED UNDER MY DIRECTION. THE BASIS OF BEARINGS FOR THIS SURVEY IS BASED ON GPS STATIC OBSERVATIONS TAKEN APRIL 15, 2021 AND PROJECTED TO KENTUCKY STATE PLANE COORDINATES (NORTH ZONE) NAD'83. THIS PLAT AND SURVEY MEET THE MINIMUM STANDARDS OR AN "URBAN" SURVEY AS DEFINED IN 201 KAR 18:150.

THE FIELD SURVEY WAS CONDUCTED 4/15/2021 AND 5/6/2021 USING TOPCON HIPER V DUAL FREQUENCY RECEIVERS IS STATIC AND RTK MODES. THE RELATIVE PRECISION OF THE SURVEY IS +-0.03' +100 PPM.

[Signature]
 RICHEY B. NEWTON

KY PLS #3674

12/1/21
 PLAT CERTIFICATION DATE



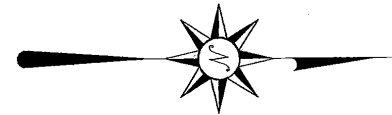
PAYNES LANDING
 SECTION 2, UNIT 6
 P.C. 9, SLD. 299

PAYNES LANDING
 UNIT 7
 P.C. 10, SLD. 51

SURV
 1. THE
 THE AN
 RESTRI
 AND P
 2. EXIS
 DEPICT
 BOUND
 COORD
 3. COO
 NOT SU
 4. THE
 RECOR

(9)

CHORD LENGTH	CHORD BEARING	DELTA ANGLE	LINE	BEARING	DISTANCE	LINE	BEARING	DISTANCE
103.41'	N 58°33'42" W	72°55'42"	L1	S 85°06'05" W	60.15'	L65	N 55°02'40" W	30.94'
143.72'	S 80°31'11" W	8°54'39"	L2	S 84°58'30" W	208.69'	L66	N 56°59'10" W	36.37'
			L3	S 76°03'53" W	51.31'	L67	N 53°49'33" W	84.04'
			L4	N 85°44'40" W	15.80'	L68	N 47°34'09" W	72.49'
			L5	N 20°46'39" E	66.99'	L69	N 48°27'09" W	55.93'
			L6	N 48°17'43" W	168.22'	L70	N 50°08'03" W	60.32'
			L7	N 31°54'10" W	75.85'	L71	N 50°28'48" W	47.27'
			L8	N 24°07'24" W	173.41'	L72	N 62°38'10" W	9.90'
			L9	N 22°19'51" W	201.69'	L73	N 75°39'00" W	74.08'
			L10	N 22°24'59" W	100.21'	L74	N 64°48'56" W	98.46'
			L11	N 40°06'16" W	102.50'	L75	N 68°24'48" W	53.01'
			L12	N 43°26'50" W	135.33'	L76	N 76°55'10" W	114.46'
			L13	N 52°04'34" W	132.64'	L77	N 79°27'02" W	52.83'
			L14	N 46°40'15" W	44.59'	L78	N 86°51'21" W	97.14'
			L15	N 35°01'19" E	73.29'	L79	N 87°34'59" W	87.84'
			L16	N 37°44'39" E	59.55'	L80	N 12°34'42" E	14.78'
			L17	N 29°03'42" W	379.97'	L81	S 87°51'30" E	86.19'
			L18	N 23°47'30" W	150.63'	L82	S 86°06'21" E	84.95'
			L19	N 82°36'09" W	197.45'	L83	S 82°23'08" E	42.93'
			L20	N 08°20'31" E	29.23'	L84	S 83°31'32" E	113.69'
			L21	N 07°54'10" E	359.00'	L85	S 69°46'44" E	56.31'
			L22	N 61°08'06" E	117.25'	L86	S 70°09'11" E	88.50'
			L23	N 08°36'19" E	7.22'	L87	S 64°38'30" E	127.59'
			L24	N 87°13'45" E	56.89'	L88	S 55°02'26" E	50.02'
			L25	S 86°04'33" E	53.52'	L89	S 53°06'59" E	72.21'
			L26	S 72°02'51" E	55.63'	L90	S 47°58'05" E	64.23'
			L27	S 49°44'48" E	56.10'	L91	S 49°35'56" E	147.20'
			L28	S 34°26'54" E	53.47'	L92	S 52°47'20" E	235.00'
			L29	S 30°17'24" E	32.07'	L93	S 40°01'23" E	110.09'
			L30	N 44°18'40" E	106.56'	L94	S 27°49'49" E	97.20'
			L31	N 48°42'41" E	68.58'	L95	S 09°26'40" E	92.52'
			L32	N 52°13'15" E	78.20'	L96	S 11°01'11" W	43.07'
			L33	N 54°31'04" E	127.98'	L97	S 80°52'16" E	46.00'
			L34	N 47°19'28" E	45.05'	L98	S 10°32'54" W	185.36'
			L35	N 33°38'46" E	67.05'	L99	S 02°57'20" E	164.32'
			L36	N 20°03'10" E	32.81'	L100	S 04°58'32" E	396.70'
			L37	N 20°03'10" E	44.66'	L101	S 03°09'58" E	569.39'
			L38	N 17°12'17" E	17.92'	L102	S 20°35'08" E	110.08'
			L39	N 10°51'09" E	24.97'	L103	S 16°14'47" E	127.74'
			L40	S 81°02'23" E	16.54'	L104	S 18°46'21" E	141.90'
			L41	N 05°27'58" E	11.76'	L105	S 04°32'49" W	181.65'
			L42	N 05°27'58" E	434.11'	L106	S 19°22'30" W	181.42'
			L43	N 05°27'58" E	461.91'	L107	S 35°10'19" W	210.20'
			L44	N 05°41'20" E	65.21'	L108	S 35°14'52" W	108.42'
			L45	N 21°15'01" E	437.05'	L109	S 35°14'52" W	32.87'
			L46	N 13°23'07" E	158.29'	L110	S 38°27'03" W	92.02'
			L47	N 08°13'33" E	91.67'	L111	S 34°22'16" W	84.05'
			L48	N 11°39'44" E	162.74'	L112	S 27°58'47" W	91.74'
			L49	N 25°58'06" E	65.68'	L113	S 23°04'22" W	81.80'
			L50	N 16°21'46" E	67.37'	L114	S 20°51'38" W	115.12'
			L51	N 18°32'16" E	82.52'	L115	S 10°43'20" W	205.57'
			L52	N 23°56'36" E	27.42'	L116	S 04°30'12" W	114.31'
			L53	N 15°48'46" E	39.55'	L117	S 00°25'57" W	149.81'
			L54	N 11°34'20" E	39.86'	L118	S 03°38'06" W	120.30'
			L55	N 05°06'00" E	81.00'	L119	S 01°22'07" W	204.57'
			L56	N 03°32'38" E	42.15'	L120	S 11°46'14" E	307.58'
			L57	N 06°25'14" E	69.42'	L121	S 23°05'51" E	116.73'
			L58	N 11°56'18" W	40.72'	L122	S 30°01'15" E	82.71'
			L59	N 19°32'16" W	30.51'	L123	S 47°54'07" E	95.07'
			L60	N 31°24'18" W	48.00'	L124	S 57°32'33" E	135.14'
			L61	N 35°45'00" W	90.33'	L125	S 59°49'36" E	78.52'
			L62	N 49°20'16" W	107.62'	L126	S 63°36'24" E	73.53'
			L63	N 49°21'14" W	42.00'	L127	S 80°04'53" E	67.89'
			L64	N 52°06'42" W	36.91'	L128	S 08°52'18" E	232.01'
			L129	S 08°54'18" E	62.36'			



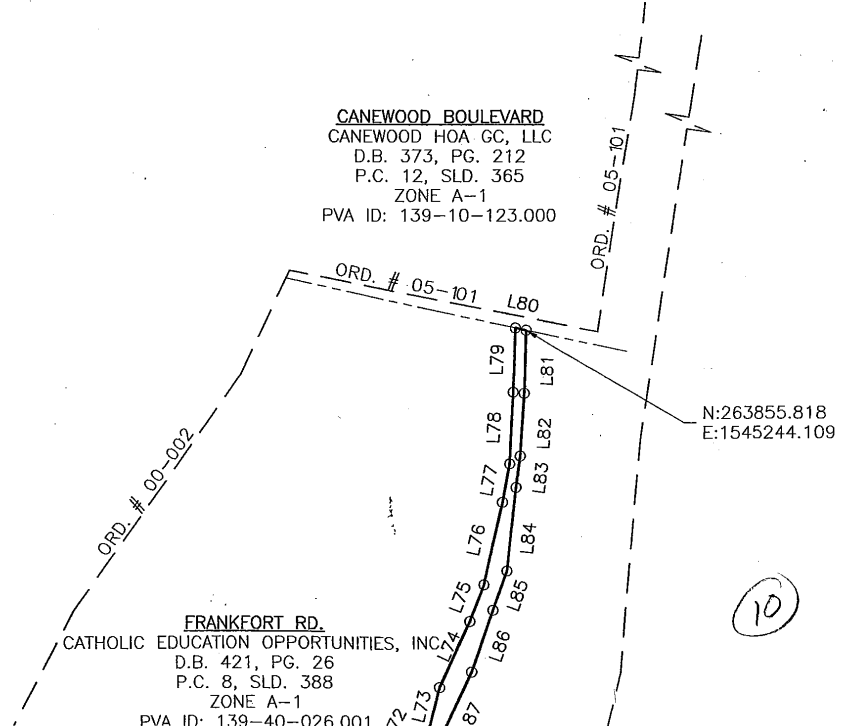
SURVEY NOTES

1. THE PURPOSE OF THIS PLAT IS TO DEPICT AN AREA FOR ANNEXATION ONLY. THE ANNEXATION PROPERTY IS SUBJECT TO ALL EASEMENTS, NOTES, RESTRICTIONS OR ANY CONDITIONS DEPICTED ON PLAT CABINET 11, SLIDE 100 AND PLAT CABINET 11, SLIDE 120 OF THE SCOTT COUNTY CLERK'S RECORDS;
2. EXISTING CITY OF GEORGETOWN ANNEXATION ORDINANCE BOUNDARY LOCATIONS DEPICTED HEREON ARE BASED ON KENTUCKY SECRETARY OF STATE CITY BOUNDARY GIS SHAPE FILES PROJECTED TO KENTUCKY STATE PLANE COORDINATES (NORTH ZONE) NAD'83;
3. COORDINATE VALUES DEPICTED HEREON ARE FOR REFERENCE ONLY AND DO NOT SUPERCEDE PHYSICAL MONUMENTS;
4. THE PROPERTY DEPICTED HEREON IS SUBJECT TO ALL EASEMENTS OF RECORD, APPURTENANT OR OTHERWISE.

CONDUCTED UNDER MY SURVEY IS BASED ON GPS DATA PROJECTED TO KENTUCKY STATE PLANE COORDINATES. THIS PLAT AND SURVEY DATA ARE DEFINED IN 2011.

ON 5/6/2021 USING GPS STATIC AND RTK MODES. ACCURACY: ±0.03' +100 PPM.

12/1/21
PLAT CERTIFICATION DATE



10

RICHEY B. NEWTON

KY PLS #3674

PLAT CERTIFICATION DATE

12/1/21

STATE of KENTUCKY
 R. B. NEWTON
 3674
 LICENSED
 PROFESSIONAL
 LAND SURVEYOR

L33	N 54°31'04"	E 127.98'	L97	S 80°52'16"	E 46.00'
L34	N 47°19'28"	E 45.05'	L98	S 10°32'54"	W 185.36'
L35	N 33°38'46"	E 67.05'	L99	S 02°57'20"	E 164.32'
L36	N 20°03'10"	E 32.81'	L100	S 04°58'32"	E 396.70'
L37	N 20°03'10"	E 44.66'	L101	S 03°09'58"	E 569.39'
L38	N 17°12'17"	E 17.92'	L102	S 20°35'08"	E 110.08'
L39	N 10°51'09"	E 24.97'	L103	S 16°14'47"	E 127.74'
L40	S 81°02'23"	E 16.54'	L104	S 18°46'21"	E 141.90'
L41	N 05°27'58"	E 11.76'	L105	S 04°32'49"	W 181.65'
L42	N 05°27'58"	E 434.11'	L106	S 19°22'30"	W 181.42'
L43	N 05°27'58"	E 461.91'	L107	S 35°10'19"	W 210.20'
L44	N 05°41'20"	E 65.21'	L108	S 35°14'52"	W 108.42'
L45	N 21°15'01"	E 437.05'	L109	S 35°14'52"	W 32.87'
L46	N 13°23'07"	E 158.29'	L110	S 38°27'03"	W 92.02'
L47	N 08°13'33"	E 91.67'	L111	S 34°22'16"	W 84.05'
L48	N 11°39'44"	E 162.74'	L112	S 27°58'47"	W 91.74'
L49	N 25°58'06"	E 65.68'	L113	S 23°04'22"	W 81.80'
L50	N 16°21'46"	E 67.37'	L114	S 20°51'38"	W 115.12'
L51	N 18°32'16"	E 82.52'	L115	S 10°43'20"	W 205.57'
L52	N 23°56'36"	E 27.42'	L116	S 04°30'12"	W 114.31'
L53	N 15°48'46"	E 39.55'	L117	S 00°25'57"	W 149.81'
L54	N 11°34'20"	E 39.86'	L118	S 03°38'06"	W 120.30'
L55	N 05°06'00"	E 81.00'	L119	S 01°22'07"	W 204.57'
L56	N 03°32'38"	E 42.15'	L120	S 11°46'14"	E 307.58'
L57	N 06°25'14"	E 69.42'	L121	S 23°05'51"	E 116.73'
L58	N 11°56'18"	W 40.72'	L122	S 30°01'15"	E 82.71'
L59	N 19°32'16"	W 30.51'	L123	S 47°54'07"	E 95.07'
L60	N 31°24'18"	W 48.00'	L124	S 57°32'33"	E 135.14'
L61	N 35°45'00"	W 90.33'	L125	S 59°49'36"	E 78.52'
L62	N 49°20'16"	W 107.62'	L126	S 63°36'24"	E 73.53'
L63	N 49°21'14"	W 42.00'	L127	S 80°04'53"	E 67.89'
L64	N 52°06'42"	W 36.91'	L128	S 08°52'18"	E 232.01'
			L129	S 08°54'18"	E 62.36'

PAYNES LANDING
 SECTION 2, UNIT 6
 P.C. 9, SLD. 299

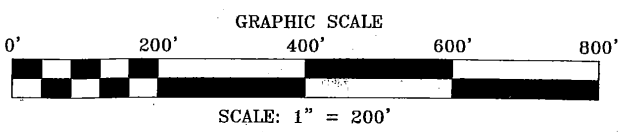
PAYNES LANDING
 UNIT 7
 P.C. 10, SLD. 51

PAYNES LANDING
 UNIT 10
 P.C. 9, SLD. 378

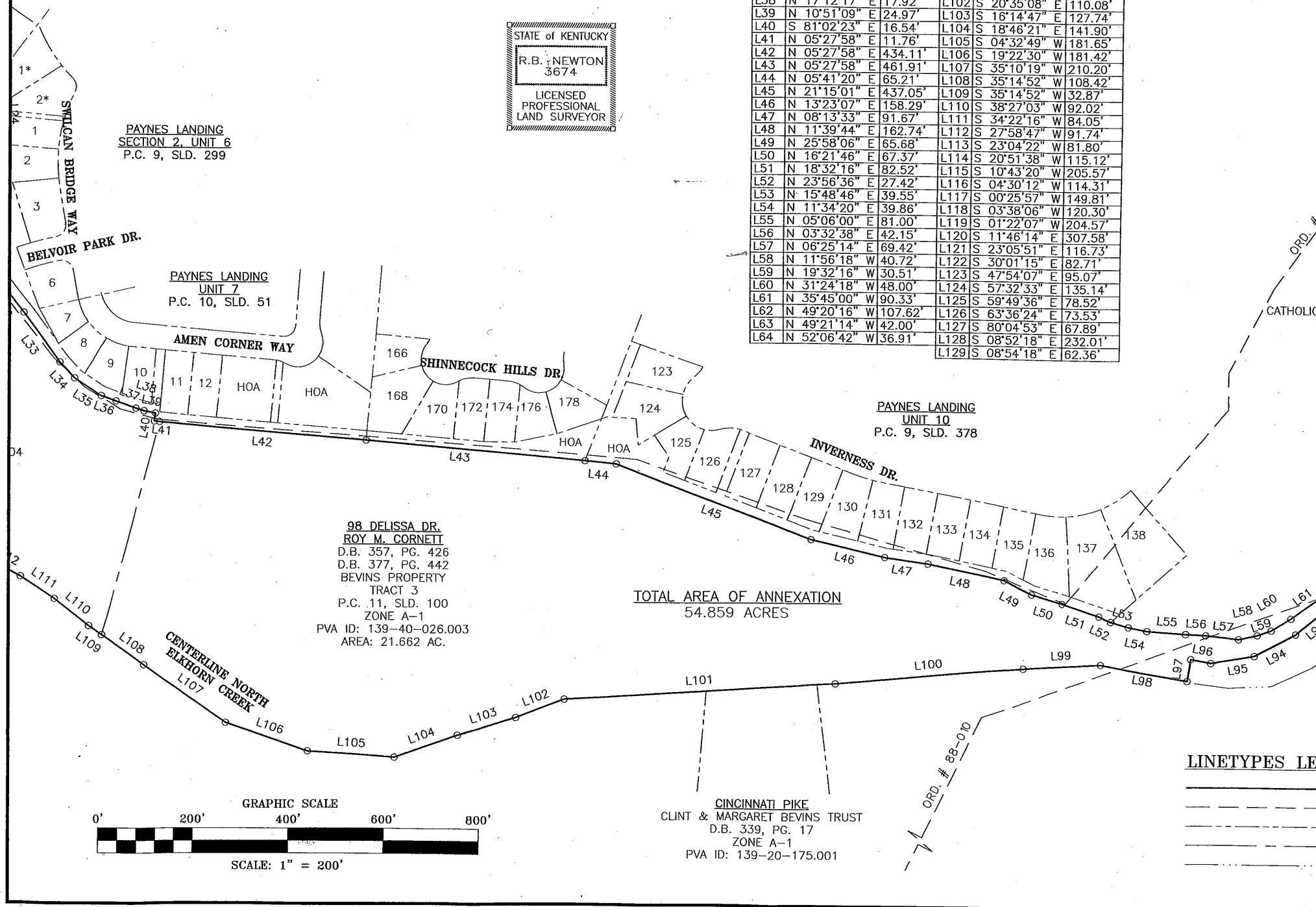
98 DELISSA DR.
 ROY M. CORNETT
 D.B. 357, PG. 426
 D.B. 377, PG. 442
 BEVINS PROPERTY
 TRACT 3
 P.C. 11, SLD. 100
 ZONE A-1
 PVA ID: 139-40-026.003
 AREA: 21.662 AC.

TOTAL AREA OF ANNEXATION
 54.859 ACRES

CINCINNATI PIKE
 CLINT & MARGARET BEVINS TRUST
 D.B. 339, PG. 17
 ZONE A-1
 PVA ID: 139-20-175.001



LINETYPES LEG



1/1/21
 CERTIFICATION DATE

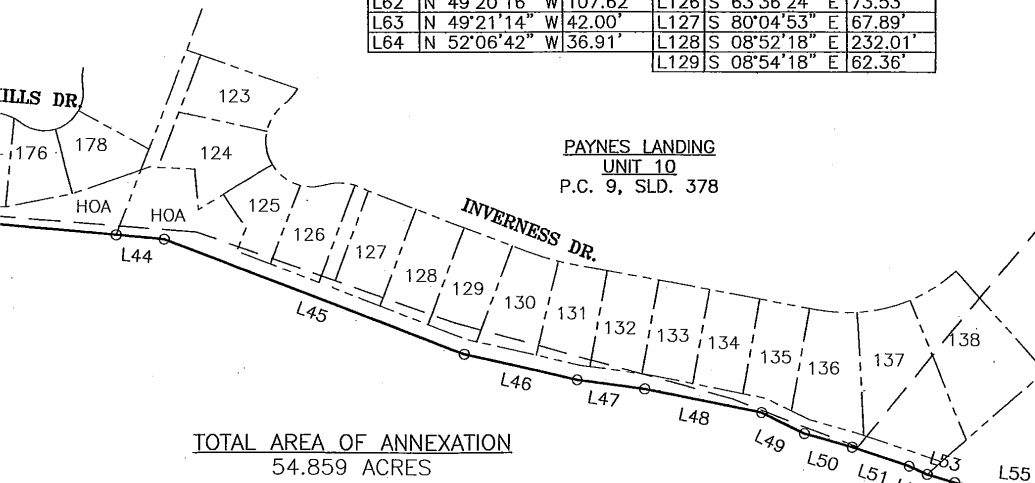
STATE of KENTUCKY
 R.B. NEWTON
 3674
 LICENSED
 PROFESSIONAL
 LAND SURVEYOR

L33	N 54°31'04"	E 127.98'	L97	S 80°52'16"	E 46.00'
L34	N 47°19'28"	E 45.05'	L98	S 10°32'54"	W 185.36'
L35	N 33°38'46"	E 67.05'	L99	S 02°57'20"	E 164.32'
L36	N 20°03'10"	E 32.81'	L100	S 04°58'32"	E 396.70'
L37	N 20°03'10"	E 44.66'	L101	S 03°09'58"	E 569.39'
L38	N 17°12'17"	E 17.92'	L102	S 20°35'08"	E 110.08'
L39	N 10°51'09"	E 24.97'	L103	S 16°14'47"	E 127.74'
L40	S 81°02'23"	E 16.54'	L104	S 18°46'21"	E 141.90'
L41	N 05°27'58"	E 11.76'	L105	S 04°32'49"	W 181.65'
L42	N 05°27'58"	E 434.11'	L106	S 19°22'30"	W 181.42'
L43	N 05°27'58"	E 461.91'	L107	S 35°10'19"	W 210.20'
L44	N 05°41'20"	E 65.21'	L108	S 35°14'52"	W 108.42'
L45	N 21°15'01"	E 437.05'	L109	S 35°14'52"	W 32.87'
L46	N 13°23'07"	E 158.29'	L110	S 38°27'03"	W 92.02'
L47	N 08°13'33"	E 91.67'	L111	S 34°22'16"	W 84.05'
L48	N 11°39'44"	E 162.74'	L112	S 27°58'47"	W 91.74'
L49	N 25°58'06"	E 65.68'	L113	S 23°04'22"	W 81.80'
L50	N 16°21'46"	E 67.37'	L114	S 20°51'38"	W 115.12'
L51	N 18°32'16"	E 82.52'	L115	S 10°43'20"	W 205.57'
L52	N 23°56'36"	E 27.42'	L116	S 04°30'12"	W 114.31'
L53	N 15°48'46"	E 39.55'	L117	S 00°25'57"	W 149.81'
L54	N 11°34'20"	E 39.86'	L118	S 03°38'06"	W 120.30'
L55	N 05°06'00"	E 81.00'	L119	S 01°22'07"	W 204.57'
L56	N 03°32'38"	E 42.15'	L120	S 11°46'14"	E 307.58'
L57	N 06°25'14"	E 69.42'	L121	S 23°05'51"	E 116.73'
L58	N 11°56'18"	W 40.72'	L122	S 30°01'15"	E 82.71'
L59	N 19°32'16"	W 30.51'	L123	S 47°54'07"	E 95.07'
L60	N 31°24'18"	W 48.00'	L124	S 57°32'33"	E 135.14'
L61	N 35°45'00"	W 90.33'	L125	S 59°49'36"	E 78.52'
L62	N 49°20'16"	W 107.62'	L126	S 63°36'24"	E 73.53'
L63	N 49°21'14"	W 42.00'	L127	S 80°04'53"	E 67.89'
L64	N 52°06'42"	W 36.91'	L128	S 08°52'18"	E 232.01'
L129	S 08°54'18"	E 62.36'			

CANEWOOD BOULEVARD
 CANEWOOD HOA GC, LLC
 D.B. 373, PG. 212
 P.C. 12, SLD. 365
 ZONE A-1
 PVA ID: 139-10-123.000

FRANKFORT RD.
 CATHOLIC EDUCATION OPPORTUNITIES, INC.
 D.B. 421, PG. 26
 P.C. 8, SLD. 388
 ZONE A-1
 PVA ID: 139-40-026.001

CINCINNATI PIKE
 CLINT & MARGARET BEVINS TRUST
 D.B. 339, PG. 17
 ZONE A-1
 PVA ID: 139-20-175.001



TOTAL AREA OF ANNEXATION
 54.859 ACRES

CINCINNATI PIKE
 CLINT & MARGARET BEVINS TRUST
 D.B. 339, PG. 17
 ZONE A-1
 PVA ID: 139-20-175.001

LINETYPES LEGEND

- BOUNDARY/ANNEXATION LINE
- EXISTING GEORGETOWN ANNEXATION ORDINANCE BOUNDARY
- - - - - APPROXIMATE ADJOINING BOUNDARY LINE
- INTERIOR TRACT LINE
- CENTERLINE OF THE NORTH FORK OF ELKHORH CREEK

(12)

ANNEXATION PLAT
 SHEET

BOY M CORNETT MAPCET