

CITY OF GLENVIEW MANOR
6406 Glenwood Road
Louisville, Kentucky 40222

June 26, 1981

Ms. Libby Horn
Land Office
Office of the Secretary of State
Capital Building,
Frankfort, Kentucky 40601

To comply with KRS 81.045 the following information is submitted.

1. Name of the city is City of Glenview Manor
2. Incorporated June 3, 1965 ✓
3. Present classification is 6th class city
4. Map showing present boundaries enclosed.

Cordially,



Hilton Wallace
Chairman, Board of Trustees

Jefferson

RECEIVED
JUN 29 1981
SECRETARY OF STATE
COMMONWEALTH OF KY.

BLICKED JAN

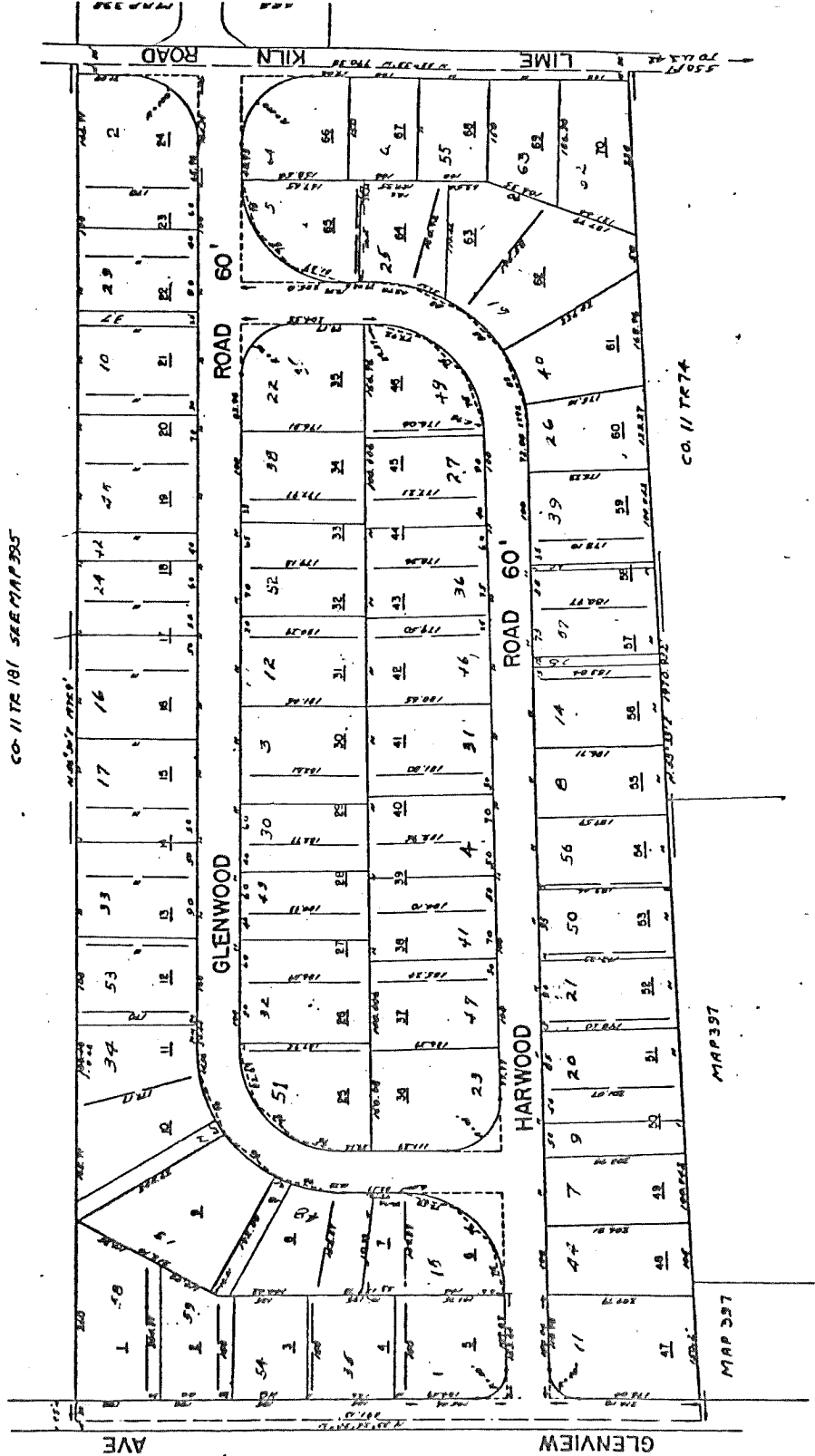
GLENVIEW MANOR

REC. 6-13-49 BLK. 6-13-49

SEE P.B. 9 P. 106 SET P.T. 107 FOR CORREL. AREAS TARGETS. PLAN 1013

PRUITT BUILT HOMES INC. LEE PRUITT - PRESIDENT

CO-11 TR 181 SEE MAP 335



CO. 11 TR 181

MAP 337

MAP 339

GLENWOOD SEC. 1
REC. 1-27-1956, P.B. 13 P. 80
ORIG. MAP W-7, TR. 10 PT.
O. F. 620

IN VII LAGE OF WINDY HILLS 1956
MERRIFIELD SEC. 2

P. B. 13 P. 82 REC. 1-31-1956
ORIG. L. MAP - W-8 TR. 19A
O. F. 625

GLENWOOD SEC. 2 - EST. 2

REC. 7-14-1958 P.B. 15 P. 85
O. F. 620 ORIG. MAP W-7 TR. 10 PT.

