



**HARRISON
LAND SURVEYING, INC.**

308 W. Jefferson Street
LaGrange, Kentucky 40031
(502) 222-7487

RECEIVED

OCT 18 1990

**PHYSICAL DESCRIPTION
CITY OF GOSHEN**

**SECRETARY OF STATE
COMMONWEALTH OF KY**

BEGINNING at a point in the northwest right-of-way line of U.S. Highway 42 at the southeast corner of the Goshen Baptist Church property, and being one hundred feet (100') northeast of the northeast right-of-way line of Club Drive; thence with said line of U.S. Highway 42, South 31 degrees 04 minutes 00 seconds West 386.98 feet to a point; South 30 degrees 06 minutes 00 seconds West 90.19 feet to a point; and South 29 degrees 17 minutes 40 seconds West 195.83 feet to the northwest corner of Charles N. Bottorff; thence with the northerly line of said Bottorff and continuing with a northerly line of Warben, Inc., North 73 degrees 55 minutes 16 seconds West 1250.90 feet to an angle point in said line of Warben, Inc.; thence with a northeast line of Warben, Inc., North 35 degrees 14 minutes 30 seconds West 736.50 feet to a point in the southeast right-of-way line of Old Harmony Landing Road; thence with said line of Old Harmony Landing Road, North 54 degrees 19 minutes 00 seconds East, passing the southwest right-of-way line of Harmony Landing Road at 150.00 feet, in all 190.01 feet to a point in Harmony Lane; thence crossing Harmony Lane and running with the northeast lines of the Oldham Civic Center and Nature Preserve, North 35 degrees 14 minutes 30 seconds West 1,341.66 feet to an angle point; and North 34 degrees 15 minutes 50 seconds West 977.05 feet to the northwest corner of Section 1 of Harmony Lake subdivision; thence North 55 degrees 46 minutes 00 seconds East 150.98 feet to a point in the southwest right-of-way line of Meadowridge Trail at its intersection with Hollendale Way; thence crossing said intersection, North 38 degrees 42 minutes 08 seconds East 52.50 feet to a point in the northerly right-of-way line of Hollendale Way; thence North 06 degrees 40 minutes 43 seconds West 150.00 feet to a point in Harmony Lake; thence along the southerly and southwesterly sides of Harmony Lake, the following courses and distances:

North 83 degrees 19 minutes 17 seconds East 307.00 feet to a point;

South 77 degrees 14 minutes 08 seconds East 193.15 feet to a point;

South 53 degrees 46 minutes 09 seconds East 121.19 feet to a point;

South 48 degrees 37 minutes 04 seconds East 116.37 feet to a point;

South 35 degrees 55 minutes 04 seconds East 124.86 feet to a point;

South 32 degrees 19 minutes 15 seconds East 79.87 feet to a point;
South 52 degrees 54 minutes 26 seconds East 71.70 feet to a point;
South 63 degrees 26 minutes 05 seconds East 113.28 feet to a point;
South 73 degrees 53 minutes 00 seconds East 90.62 feet to a point;
South 61 degrees 39 minutes 06 seconds East 185.11 feet to a point; and
South 33 degrees 40 minutes 04 seconds East 188.10 feet to a point in the northwest right-of-way line of Valley Drive; thence crossing Valley Drive and continuing with the southerly lines of Goshen Hills subdivision the following courses and distances:

South 43 degrees 51 minutes 00 seconds East 179.32 feet to a point;
South 87 degrees 12 minutes 07 seconds East 1,058.19 feet to a point;
South 75 degrees 14 minutes 50 seconds East 541.65 feet to a point;
South 11 degrees 07 minutes 50 seconds West 1.42 feet to a point;
South 74 degrees 51 minutes 34 seconds East 9.77 feet to a point;
North 37 degrees 59 minutes 00 seconds East 82.50 feet to a point;
South 33 degrees 51 minutes 30 seconds East 46.66 feet to a point;
South 11 degrees 07 minutes 50 seconds West 43.56 feet to a point;
South 75 degrees 14 minutes 50 seconds East 319.98 feet to a point;
North 75 degrees 39 minutes 00 seconds East 63.46 feet to a point; and
North 45 degrees 54 minutes 30 seconds East 105.43 feet to a point; in the southwest right-of-way line of Springmeadow Lane; thence crossing Springmeadow Lane and continuing with the southerly lines of Goshen Hills subdivision, North 63 degrees 54 minutes 36 seconds East 213.33 feet to a point; and South 37 degrees 48 minutes 00 seconds East 169.70 feet to a point in the southeast line of Harmony Lake subdivision; thence with the southeasterly lines of Harmony Lake subdivision the following courses and distances:

South 32 degrees 14 minutes 29 seconds West 447.74 feet to a point;
South 36 degrees 02 minutes 30 seconds West 488.33 feet to a point; and
South 32 degrees 53 minutes 30 seconds West 91.32 feet to a point in the northeast line of Goshen Baptist Church; thence with said church line, North 47 degrees 21 minutes 40 seconds West 174.86 feet to a point that

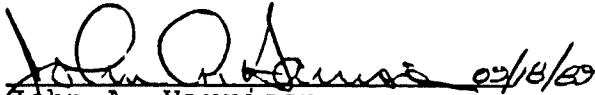
is forty feet (40') southeast of the southeast right-of-way line of Springmeadow Lane; thence running with a line that is forty feet (40') from and either parallel or concentric with said line of Springmeadow Lane the following courses and distances:

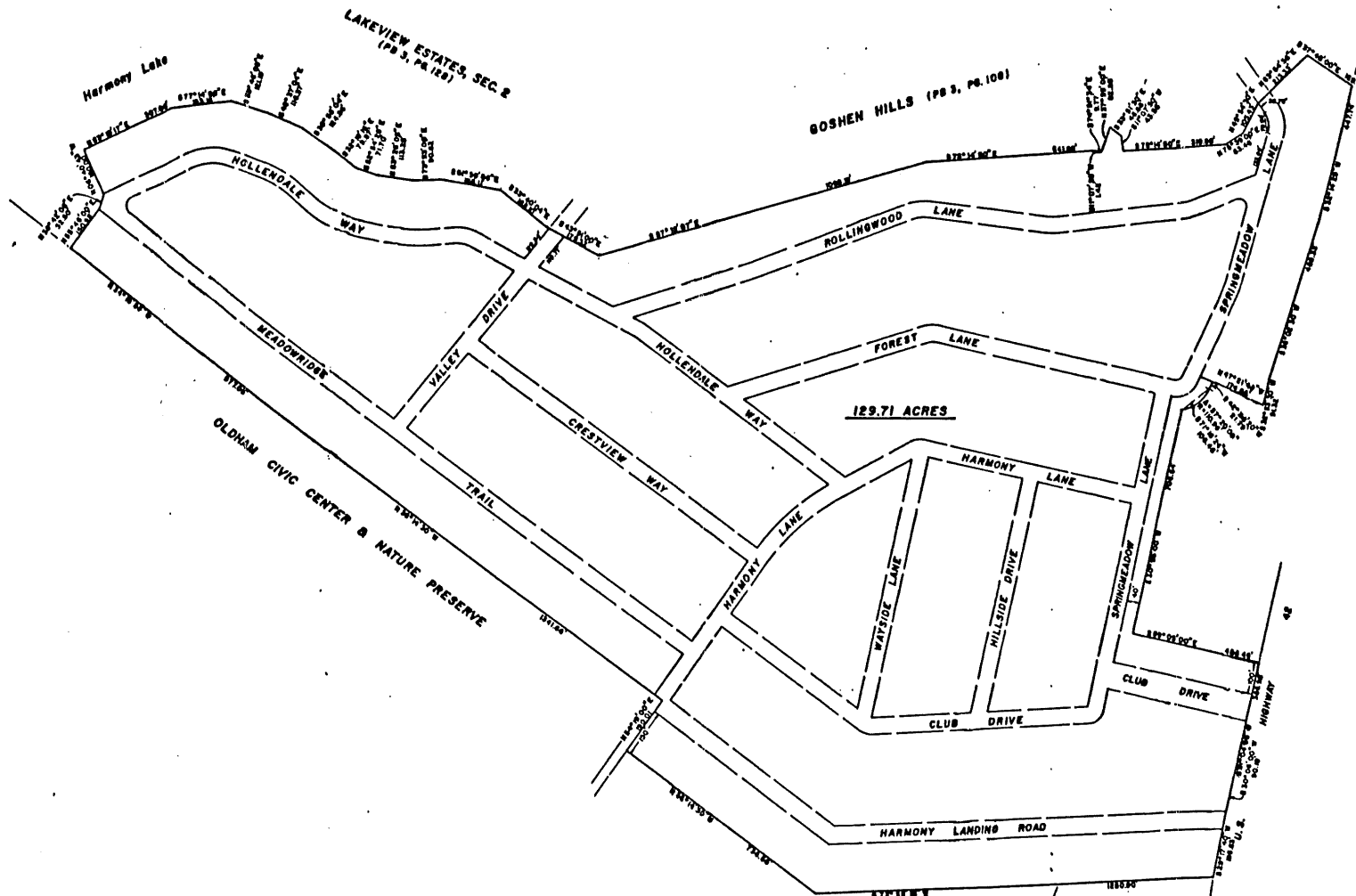
South 42 degrees 38 minutes 20 seconds West 21.79 feet to a point of curvature;

with a curve to the right having a central angle of 57 degrees 20 minutes 08 seconds and a radius of 110.96 feet, the chord of which is South 71 degrees 18 minutes 24 seconds West 106.46 feet to a point; and

South 30 degrees 55 minutes 00 seconds West 706.64 feet to a point that is one hundred feet (100')

northeast of the northeast right-of-way line of Club Drive, South 59 degrees 05 minutes 00 seconds East 406.46 feet to the beginning, containing 129.71 acres per survey dated September 15, 1989, by John A. Harrison, Professional Land Surveyor.


John A. Harrison
Professional Land Surveyor



WARBEN, INC.

BOTTORFF, Charles N.

PLAT PREPARED BY

John A. Harrison 11/1/78

INCORPORATION PLAT FOR
CITY OF GOSHEN
GOSHEN, KENTUCKY
Reference: PB 1, PB 32, PB 1, PB 36, PB 3, PB 18, 3,
PB 102, PB 1, PB 100
BY
HARRISON
LAND SURVEYING, INC.
500 N. JOHNSON STREET - LEONARD, KY. 40001
ESTABLISHED 1967
SEPTEMBER 1988
Scale: 1"=150'