

**CERTIFICATION**

I certify I am the duly qualified City Clerk of the City of Grayson, Kentucky, and the following six (6) pages of <sup>Resolution</sup> Ordinance No. 03-2020 is a true, correct, and complete copy duly adopted by the City Commission at a duly convened meeting held on the 13<sup>th</sup> day of October, 2020, all as appears in the official records of said City.

WITNESS, my hand this 22<sup>nd</sup> day of Dec., 2020.

Kathy Niece  
KATHY NIECE, CITY CLERK  
GRAYSON, KENTUCKY

RECEIVED AND FILED  
DATE January 11, 2021

MICHAEL G. ADAMS  
SECRETARY OF STATE  
COMMONWEALTH OF KENTUCKY  
BY Kandice Addmons

RESOLUTION 23-2020

A RESOLUTION ADOPTING A MODERN AND ACCURATE LEGAL  
DESCRIPTION OF TERRITORY PREVIOUSLY  
ANNEXED BY ORDINANCE 06-2001

For the  
City of Grayson, Kentucky

WHEREAS, the City of Grayson is submitting a Resolution adopting and approving Ordinance No. 06-2001 declaring the Annexation of certain territory and incorporating the same within the corporate boundaries of the City of Grayson, pursuant to the provisions of KRS 81A.420 as well as comply with the requirements of Amended KRS 81A.4 70

WHEREAS, the City of Grayson wishes to provide a modern, accurate, easily identifiable legal description reflection bearings and coordinates based upon the state plane coordinate system, including relevant GPS and GIS data, same having been certified by a professional land surveyor for each prior annexation;

WHEREAS, the city does not intend to amend or replace its prior ordinance annexing, but rather to interpret the defined boundaries of the territory previously annexed and adopt a modern and accurate legal description of territory previously annexed.

NOW THEREFORE, BE IT RESOLVED BY THE CITY COUNCIL OF THE CITY OF GRAYSON, KENTUCKY:

SECTION 1: That the City Council of the City of Grayson hereby adopts the following legal description, and a plat attached hereto as prepared by Edison Elliott, PLS, No. 3760 by new plat as an accurate description of the property previously annexed into the corporate city limits of the City of Grayson by Ordinance No. 06-2001 dated June 21, 2001, a copy of which is attached hereto and hereby adopts said new legal description and plat as the official legal description and plat to be adopted by the City for all purposes when referencing this prior annexation.

SECTION 2: This new legal description as prepared by Edison Elliott, PLS, No. 3760 was completed on September 2, 2020 and is as follows:

Being a parcel of land containing 239.44 Acres, see map titled "Plat showing ordinance number 6 – 2001 of ~ City of Grayson, Kentucky boundary, line on Route 7 and Little Sandy River, County of Carter, State of Kentucky, for the purpose of clarifying territory that was annexed into city of Grayson, Kentucky."

239.44 Acres (acreage correction by calculation from 238.04 acres by M: Back LS 2178 survey)

Resources used to describe and depict the tract:

City of Grayson, Kentucky Ordinance No. 6 – 2001, survey map and description per M. Back LS 2178 dated 03.20.2000 in which basis of bearings from survey was converted to Kentucky State plane coordinate system ~ North zone for compliance and is further described as in a metes and boundary description as follows:

Beginning at a point in center of bridge over Little Sandy River and in the center of Route 7, also being a point in the South Boundary limits of the city of Grayson, Kentucky, having Kentucky State plane coordinate system ~ North Zone values {N: 302473.6522, E: 2013738.2536};

Running with Little Sandy River and with the south boundary limits of the City of Grayson, Kentucky the following (5) calls:

1. Thence N 87 DEGREES 25 MINUTES 42 SECONDS E a distance of 749.43’;
2. Thence N 77 DEGREES 01 MINUTES 32 SECONDS E a distance of 273.40’;
3. Thence N 55 DEGREES 54 MINUTES 47 SECONDS E a distance of 212.47’;
4. Thence N 33 DEGREES 04 MINUTES 47 SECONDS E a distance of 134.11’;
5. Thence N 14 DEGREES 56 MINUTES 00 SECONDS E a distance of 200.00’;

Thence leaving the Little Sandy River and the south boundary limits of the City of Grayson, Kentucky S. 59 DEGREES 04 MINUTES 00 SECONDS E a distance of 328.00’ to a 30” Black Oak found;

Thence S 49 DEGREES 49 MINUTES 00 SECONDS E a distance of 150.00’ to an iron pin set by LS 2178;

Thence S 49 DEGREES 49 MINUTES 00 SECONDS E a distance of 252.78’ to an iron pin set by LS 2178;

Thence S 49 DEGREES 49 MINUTES 00 SECONDS E a distance of 272.22’ to a 10” Persimmon found;

Thence S 51 DEGREES 34 MINUTES 00 SECONDS E a distance of 158.89’ to an iron pin set by LS 2178;

Thence S 51 DEGREES 34 MINUTES 00 SECONDS E a distance of 146.11’ to a 24” Hickory found;

Thence S 49 DEGREES 04 MINUTES 00 SECONDS E a distance of 249.41’ to a 28” Cherry found;

Thence S 00 DEGREES 25 MINUTES 01 SECONDS E a distance of 272.34’ to an iron pin set by LS 2178;

Thence 72 DEGREES 49 MINUTES 00 SECONDS E a distance of 162.00' to an iron pin set by LS 2178;

Thence S 84 DEGREES 19 MINUTES 00 SECONDS E a distance of 218.00' to an iron pin set by LS 2178;

Thence S 03 DEGREES 26 MINUTES 00 SECONDS W a distance of 459.00' to an iron pin set by LS 2178;

Thence N 85 DEGREES 34 MINUTES 00 SECONDS W a distance of 208.00';

Thence S 88 DEGREES 56 MINUTES 00 SECONDS W a distance of 300.00';

Thence N 77 DEGREES 19 MINUTES 00 SECONDS W a distance of 46.00';

Thence N 78 DEGREES 34 MINUTES 00 SECONDS W a distance of 250.00';

Thence N 78 DEGREES 35 MINUTES 58 SECONDS W a distance of 667.35' to a 4" Hornbeam found with iron pin found;

Thence S 15 DEGREES 38 MINUTES 18 SECONDS W a distance of 1338.39' to an iron pin found;

Thence N 76 DEGREES 56 MINUTES 19 SECONDS W a distance of 37.32';

Thence N 55 DEGREES 49 MINUTES 34 SECONDS W a distance of 64.47';

Thence N 75 DEGREES 36 MINUTES 38 SECONDS W a distance of 86.60';

Thence N 70 DEGREES 36 MINUTES 43 SECONDS W a distance of 66.15';

Thence N 64 DEGREES 28 MINUTES 56 SECONDS W a distance of 36.26';

Thence N 59 DEGREES 57 MINUTES 17 SECONDS W a distance of 36.82';

Thence N 66 DEGREES 08 MINUTES 32 SECONDS W a distance of 62.47';

Thence N 76 DEGREES 04 MINUTES 36 SECONDS W a distance of 23.95';

Thence N 61 DEGREES 23 MINUTES 41 SECONDS W a distance of 77.23';

Thence N 70 DEGREES 07 MINUTES 27 SECONDS W a distance of 148.69';

Thence N 63 DEGREES 17 MINUTES 29 SECONDS W a distance of 28.84';

Thence N 70 DEGREES 55 MINUTES 43 SECONDS W a distance of 117.34' to an iron pin found;

Thence S 02 DEGREES 13 MINUTES 15 SECONDS W a distance of 740.99' to a 28" Poplar found;

---

Thence N 87 DEGREES 46 MINUTES 34 SECONDS W a distance of 352.07' to a 40" Black Oak found;

Thence S 03 DEGREES 05 MINUTES 03 SECONDS W a distance of 738.31' to an iron pin found;

Thence S 04 DEGREES 03 MINUTES 04 SECONDS W a distance of 193.58' to an iron pin found;

Thence S 88 DEGREES 15 MINUTES 09 SECONDS W a distance of 1075.86' to an iron pin found;

Thence N 03 DEGREES 57 MINUTES 51 SECONDS E a distance of 622.88' to an iron pin found;

Thence N 84 DEGREES 29 MINUTES 49 SECONDS E a distance of 234.29' to an iron pin found;

Thence N 04 DEGREES 30 MINUTES 22 SECONDS E a distance of 247.78' to a point in McCoy Lane;

Running with McCoy Lane the following (6) calls:

1. Thence with a curve turning to the right with an arc length of 65.81', with a radius of 664.74', with a chord bearing of S 67 DEGREES 02 MINUTES 21 SECONDS W, with a chord length of 65.78';
2. Thence with a compound curve turning to the right with an arc length of 158.15', with a radius to 140.80', with a chord bearing of N 77 DEGREES 57 MINUTES 32 SECONDS W, with a chord length of 149.97';
3. Thence with a compound curve turning to the right with an arc length of 71.43', with a radius of 92.28', with a chord bearing of N 23 DEGREES 36 MINUTES 18 SECONDS W, with a chord length of 69.66';

4. Thence with a compound curve turning to the right with an arc length of 103.39', with a radius of 619.91', with a chord bearing of N 03 DEGREES 21 MINUTES 26 SECONDS E, with a chord length of 103.27';
5. Thence N 04 DEGREES 02 MINUTES 26 SECONDS E a distance of 354.79';
6. Thence with a curve turning to the left with an arc length of 210.20', with a radius of 214.12', with a chord bearing of N 24 DEGREES 45 MINUTES 48 SECONDS W, with a chord length of 201.86' to a point in Route 7.

Running with Route 7 the following (3) calls:

1. Thence S 389 DEGREES 32 MINUTES 30 SECONDS W a distance of 383.95';
2. Thence S 40 DEGREES 36 MINUTES 36 SECONDS W a distance of 368.29';
3. Thence S 41 DEGREES 25 MINUTES 07 SECONDS W a distance of 626.72' to a point in the center of bridge over Little Sandy River and in the center of Route 7, having Kentucky State Plane Coordinate System ~ North Zone Values {N: 299302.3625, E: 2011691.4181};

Running with the Little Sandy River the following (7) calls:

1. Thence N 09 DEGREES 41 MINUTES 29 SECONDS W a distance of 1526.90';
2. Thence N 06 DEGREES 15 MINUTES 13 SECONDS E a distance of 310.37';
3. Thence N 37 DEGREES 15 MINUTES 06 SECONDS E a distance of 169.42';
4. Thence N 54 DEGREES 23 MINUTES 29 SECONDS E a distance of 947.99';
5. Thence N 64 DEGREES 15 MINUTES 54 SECONDS E a distance of 688.05';
6. Thence N 80 DEGREES 28 MINUTES 35 SECONDS E a distance of 300.07';
7. Thence N 56 DEGREES 10 MINUTES 01 SECONDS E a distance of 579.11' to a point in the center of bridge, which is the point of beginning and containing 239.44 acres.

Completion Date of Boundary Survey: 09.02.2020

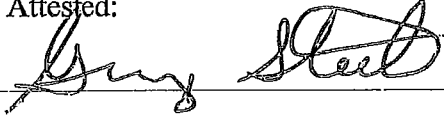
Basis for Bearings: Kentucky State Plane Coordinate System ~ Single Zone

**NOW THEREFORE BE IT RESOLVED** that the City of Grayson may adopt and approve the Ordinance No. 06-2001 declaring the Annexation of certain territory and incorporating the same within the corporate boundaries of the City of Grayson, pursuant to the provisions of KRS 81A.420., the modern and accurate legal description surveyed on 09.02.2020, and that the City of Grayson also authorizes the Mayor, George Steele, to sign documents and paperwork as necessary.

COMMONWEALTH OF KENTUCKY, CARTER COUNTY

Read and approved by the City Council Members of Grayson, Kentucky, this the 13<sup>th</sup> day of October, 2020.

Attested:



GEORGE STEELE, MAYOR

  
KATHY NIECE, CITY CLERK

21 GUNPOWDER LANE

LICENSED IN KENTUCKY, WEST VIRGINIA,

Grayson, Kentucky 41143

Ohio & Tennessee

Office 606.475.3301

edison@eaasurveying.com

Cell 606.316.0856

## EDISON ELLIOTT, PLS

Being a parcel of land containing 239.44 acres, see map titled "Plat showing ordinance no. 6-2001-of ~ City of Grayson, Kentucky Boundary, lying on Route 7 and Little Sandy River, County of Carter, State of Kentucky, for the purpose of clarifying territory that was annexed into City of Grayson, Kentucky."

239.44 acres (acreage correction by calculation from 238.04 acres by M. Back LS 2178 survey)

Resources used to describe & depict the tract:

City of Grayson, Kentucky ordinance no. 6-2001, survey map and description per M. Back LS 2178 dated 03.20.2000 in which basis of bearings from survey was converted to Kentucky State Plane Coordinate System ~ North Zone for compliance and is further described as in a metes and boundary description as follows:

Beginning at a point in center of bridge over Little San River and in the center of Route 7, also being a point in the south boundary limits of the City of Grayson, Kentucky, having Kentucky State Plane Coordinate System ~ North Zone Values {N: 302473.6522, E: 2013738.2536};

Running with Little Sandy River and with the south boundary limits of the City of Grayson, Kentucky the following (5) calls:

1. Thence N 87 DEGREES 25 MINUTES 42 SECONDS E a distance of 749.43';
2. Thence N 77 DEGREES 01 MINUTES 32 SECONDS E a distance of 273.40';
3. Thence N 55 DEGREES 54 MINUTES 47 SECONDS E a distance of 212.47';
4. Thence N 33 DEGREES 04 MINUTES 47 SECONDS E a distance of 134.11';
5. Thence N 14 DEGREES 56 MINUTES 00 SECONDS E a distance of 200.00';

Thence leaving the Little Sandy River and the south boundary limits of the City of Grayson, Kentucky S 59 DEGREES 04 MINUTES 00 SECONDS E a distance of 328.00' to a 30" Black Oak found;

Thence S 49 DEGREES 49 MINUTES 00 SECONDS E a distance of 150.00' to an iron pin set by LS 2178;

Thence S 49 DEGREES 49 MINUTES 00 SECONDS E a distance of 252.78' to an iron pin set by LS 2178;

Thence S 49 DEGREES 49 MINUTES 00 SECONDS E a distance of 272.22' to a 10" Persimmon found;



21 GUNPOWDER LANE  
Grayson, Kentucky 41143  
Office 606.475.3301  
Cell 606.316.0856

LICENSED IN KENTUCKY, WEST VIRGINIA,  
Ohio & Tennessee  
edison@eaasurveying.com

---

## EDISON ELLIOTT, PLS

Thence S 51 DEGREES 34 MINUTES 00 SECONDS E a distance of 158.89' to an iron pin set  
by LS 2178;

Thence S 51 DEGREES 34 MINUTES 00 SECONDS E a distance of 146.11' to a 24" Hickory  
found;

Thence S 49 DEGREES 04 MINUTES 00 SECONDS E a distance of 249.41' to a 28" Cherry  
found;

Thence S 00 DEGREES 25 MINUTES 01 SECONDS E a distance of 272.34' to an iron pin set  
by LS 2178;

Thence S 72 DEGREES 49 MINUTES 00 SECONDS E a distance of 162.00' to an iron pin set  
by LS 2178;

Thence S 84 DEGREES 19 MINUTES 00 SECONDS E a distance of 218.00' to an iron pin set  
by LS 2178;

Thence S 03 DEGREES 26 MINUTES 00 SECONDS W a distance of 459.00' to an iron pin set  
by LS 2178;

Thence N 85 DEGREES 34 MINUTES 00 SECONDS W a distance of 208.00';

Thence S 88 DEGREES 56 MINUTES 00 SECONDS W a distance of 300.00';

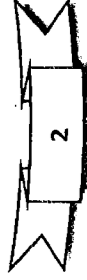
Thence N 77 DEGREES 19 MINUTES 00 SECONDS W a distance of 46.00';

Thence N 78 DEGREES 34 MINUTES 00 SECONDS W a distance of 250.00';

Thence N 78 DEGREES 35 MINUTES 58 SECONDS W a distance of 667.35' to a 4" Hornbeam  
found with iron pin found;

Thence S 15 DEGREES 38 MINUTES 18 SECONDS W a distance of 1338.39' to an iron pin  
found;

Thence N 76 DEGREES 56 MINUTES 19 SECONDS W a distance of 37.32';



21 GUNPOWDER LANE  
Grayson, Kentucky 41143  
Office 606.475.3301  
Cell 606.316.0856

LICENSED IN KENTUCKY, WEST VIRGINIA,  
Ohio & Tennessee  
edison@eaasurveying.com

---

## EDISON ELLIOTT, PLS

Thence N 55 DEGREES 49 MINUTES 34 SECONDS W a distance of 64.47';

Thence N 75 DEGREES 36 MINUTES 38 SECONDS W a distance of 86.60';

Thence N 70 DEGREES 36 MINUTES 43 SECONDS W a distance of 66.15';

Thence N 64 DEGREES 28 MINUTES 56 SECONDS W a distance of 36.26';

Thence N 59 DEGREES 57 MINUTES 17 SECONDS W a distance of 36.82';

Thence N 66 DEGREES 08 MINUTES 32 SECONDS W a distance of 62.47';

Thence N 76 DEGREES 04 MINUTES 36 SECONDS W a distance of 23.95';

Thence N 61 DEGREES 23 MINUTES 41 SECONDS W a distance of 77.23';

Thence N 70 DEGREES 07 MINUTES 27 SECONDS W a distance of 148.69';

Thence N 63 DEGREES 17 MINUTES 29 SECONDS W a distance of 28.84';

Thence N 70 DEGREES 55 MINUTES 43 SECONDS W a distance of 117.34' to an iron pin  
found;

Thence S 02 DEGREES 13 MINUTES 15 SECONDS W a distance of 740.99' to a 28" Poplar  
found;

Thence N 87 DEGREES 46 MINUTES 34 SECONDS W a distance of 352.07' to a 40" Black  
Oak found;

Thence S 03 DEGREES 05 MINUTES 03 SECONDS W a distance of 738.31' to an iron pin  
found;

Thence S 04 DEGREES 03 MINUTES 04 SECONDS W a distance of 193.58' to an iron pin  
found;



21 GUNPOWDER LANE

LICENSED IN KENTUCKY, WEST VIRGINIA,

Grayson, Kentucky 41143

Ohio & Tennessee

Office 606.475.3301

edison@eaasurveying.com

Cell 606.316.0856

---

## EDISON ELLIOTT, PLS

Thence S 88 DEGREES 15 MINUTES 09 SECONDS W a distance of 1075.86' to an iron pin found;

Thence N 03 DEGREES 57 MINUTES 51 SECONDS E a distance of 622.88' to an iron pin found;

Thence N 84 DEGREES 29 MINUTES 49 SECONDS E a distance of 234.29' to an iron pin found;

Thence N 04 DEGREES 30 MINUTES 22 SECONDS E a distance of 247.78' to a point in McCoy Lane;

Running with McCoy Lane the following (6) calls:

1. Thence with a curve turning to the right with an arc length of 65.81', with a radius of 664.74', with a chord bearing of S 67 DEGREES 02 MINUTES 21 SECONDS W, with a chord length of 65.78';
2. Thence with a compound curve turning to the right with an arc length of 158.15', with a radius of 140.80', with a chord bearing of N 77 DEGREES 57 MINUTES 32 SECONDS W, with a chord length of 149.97';
3. Thence with a compound curve turning to the right with an arc length of 71.43', with a radius of 92.28', with a chord bearing of N 23 DEGREES 36 MINUTES 18 SECONDS W, with a chord length of 69.66';
4. Thence with a compound curve turning to the right with an arc length of 103.39', with a radius of 619.91', with a chord bearing of N 03 DEGREES 21 MINUTES 26 SECONDS E, with a chord length of 103.27';
5. Thence N 04 DEGREES 02 MINUTES 26 SECONDS E a distance of 354.79';
6. Thence with a curve turning to the left with an arc length of 210.20', with a radius of 214.12', with a chord bearing of N 24 DEGREES 45 MINUTES 48 SECONDS W, with a chord length of 201.86' to a point in Route 7;

Running with Route 7 the following (3) calls:

1. Thence S 38 DEGREES 32 MINUTES 30 SECONDS W a distance of 383.95';
2. Thence S 40 DEGREES 36 MINUTES 36 SECONDS W a distance of 368.29';
3. Thence S 41 DEGREES 25 MINUTES 07 SECONDS W a distance of 626.72' to a point in center of bridge over Little Sandy River and in the center of Route 7, having



21 GUNPOWDER LANE

LICENSED IN KENTUCKY, WEST VIRGINIA,

Grayson, Kentucky 41143

Ohio & Tennessee

Office 606.475.3301

edison@eaasurveying.com

Cell 606.316.0856

## EDISON ELLIOTT, PLS

Kentucky State Plane Coordinate System ~ North Zone Values {N: 299302.3625, E: 2011691.4181};

Running with the Little Sandy River the following (7 calls):

1. Thence N 09 DEGREES 41 MINUTES 29 SECONDS 29 SECONDS W a distance of 1526.90';
2. Thence N 06 DEGREES 15 MINUTES 13 SECONDS E a distance of 310.37';
3. Thence N 37 DEGREES 15 MINUTES 06 SECONDS E a distance of 169.42';
4. Thence N 54 DEGREES 23 MINUTES 29 SECONDS E a distance of 947.99';
5. Thence N 64 DEGREES 15 MINUTES 54 SECONDS E a distance of 688.05';
6. Thence N 80 DEGREES 28 MINUTES 35 SECONDS E a distance of 300.07';
7. Thence N 56 DEGREES 10 MINUTES 01 SECONDS E a distance of 579.11' to a point in the center of bridge, which is the point of beginning and containing 239.44 acres.

Completion Date of Boundary Survey: 09.02.2020

Basis for bearings: Kentucky State Plane Coordinate System ~ Single Zone

This survey does not constitute a title search by Edison Elliott, PLS to determine ownership and/or easements of record.

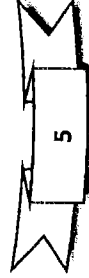
For all information regarding rights-of-ways, easements, title of record and subject property lines we relied upon the Carter County Kentucky Clerk's Office.

The above described parcel of land is subject to all restrictions, reservations, rights-of-ways, easements, utilities, covenants, exceptions, conveyances, leases, and exclusions previously imposed and appearing of record and those not of record.



*Edison Elliott*

09.02.2020



**GENERAL NOTES:**

1. THIS PLAT REPRESENTS AREA DESCRIBED IN ORDINANCE NO. 6-2001.

2. RESOURCES USED TO DESCRIBE & DEPICT THE TRACT:

\*City of Grayson, Kentucky ordinance no. 6-2001

\*\*Survey map and description per M. Back LS 2178 dated 03.20.2000.

\*\*\*Basis of Bearings from M. Back LS 2178 was converted to Kentucky State Plane Coordinate System ~ North Zone for compliance.

3. CLIENT PROPERTY ADDRESS:

CITY OF GRAYSON  
302 EAST MAIN STREET, GRAYSON, KENTUCKY 41143

4. THE WORD CERTIFY AS SHOWN AND USED HEREON MEANS AN EXPRESSION OF PROFESSIONAL OPINION REGARDING THE FACTS OF THE SURVEY AND DOES NOT CONSTITUTE A WARRANTY OR GUARANTEE, EXPRESSED OR IMPLIED.

5. DATE OF WORK COMPLETED: 09.03.2020

6. THIS SURVEY DOES NOT CONSTITUTE A TITLE SEARCH BY EDISON ELLIOTT PROFESSIONAL LAND SURVEYOR TO DETERMINE OWNERSHIP AND EASEMENTS OF RECORD.

7. FOR ALL INFORMATION REGARDING RIGHT-OF-WAYS, EASEMENTS, TITLE OF RECORD AND SUBJECT PROPERTY LINES WE RELIED UPON THE CARTER COUNTY CLERK'S OFFICE.

8. BEING SUBJECT TO ALL RESTRICTIONS, RESERVATIONS, RIGHT OF WAYS, EASEMENTS, UTILITIES, COVENANTS, EXCEPTIONS, CONVEYANCES, LEASES AND EXCLUSIONS PREVIOUSLY IMPOSED AND APPEARING OF RECORD, AND THOSE NOT OF RECORD.

9. BASIS OF BEARINGS: KENTUCKY STATE PLAN NORTH ZONE

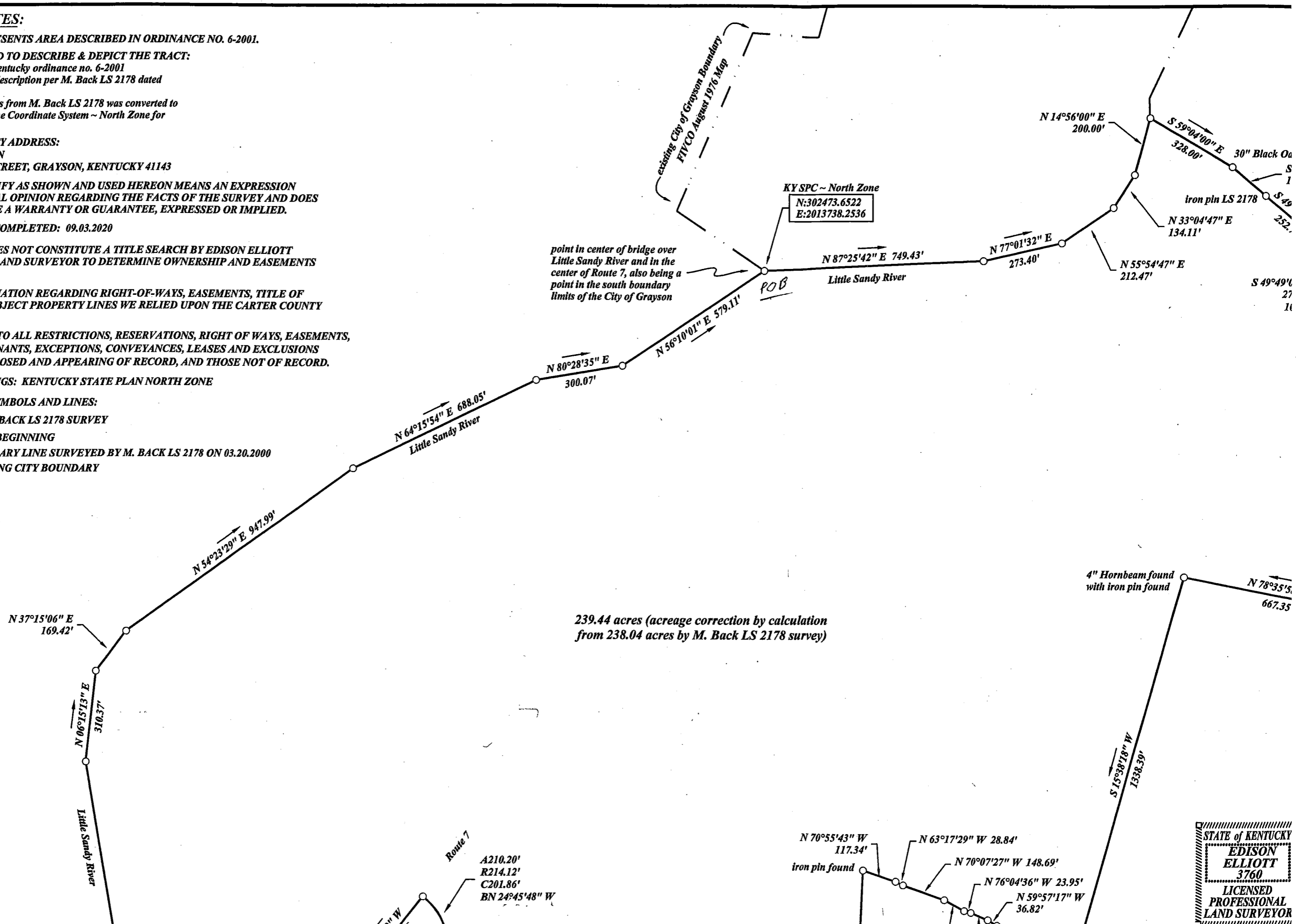
10. GENERAL MAP SYMBOLS AND LINES:

○ POINT PER M. BACK LS 2178 SURVEY

p.o.b. POINT OF BEGINNING

—— BOUNDARY LINE SURVEYED BY M. BACK LS 2178 ON 03.20.2000

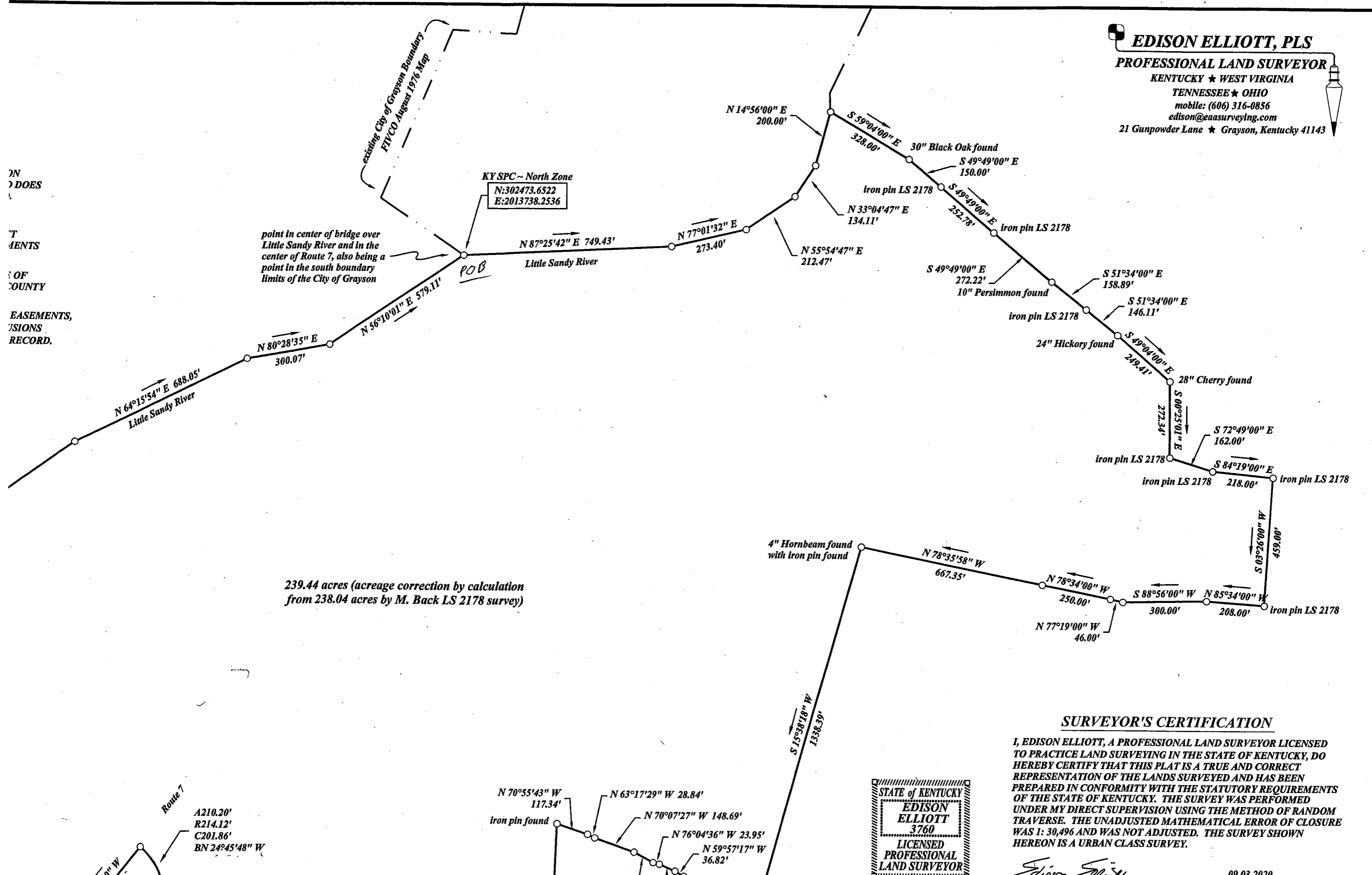
--- EXISTING CITY BOUNDARY



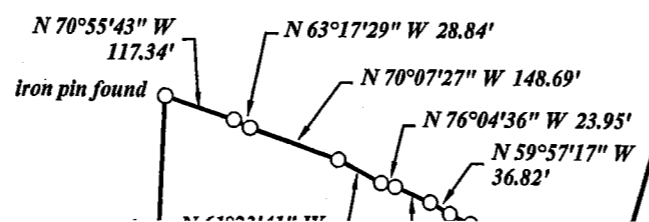
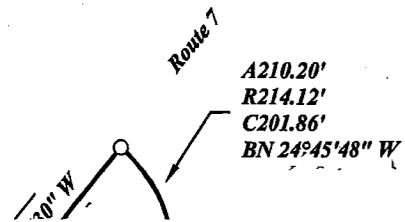
STATE OF KENTUCKY  
**EDISON ELLIOTT**  
3760  
LICENSED PROFESSIONAL LAND SURVEYOR

**EDISON ELLIOTT, PLS**  
**PROFESSIONAL LAND SURVEYOR**  
 KENTUCKY ★ WEST VIRGINIA  
 TENNESSEE ★ OHIO  
 mobile: (606) 316-0856  
 edison@eaasurveying.com  
 21 Gunpowder Lane ★ Grayson, Kentucky 41143

ON  
 DOES  
  
 T  
 MENTS  
  
 OF  
 COUNTY  
  
 EASEMENTS,  
 SIONS  
 RECORD.



239.44 acres (acreage correction by calculation from 238.04 acres by M. Back LS 2178 survey)



STATE OF KENTUCKY  
**EDISON ELLIOTT**  
 3760  
 LICENSED PROFESSIONAL LAND SURVEYOR

**SURVEYOR'S CERTIFICATION**

I, EDISON ELLIOTT, A PROFESSIONAL LAND SURVEYOR LICENSED TO PRACTICE LAND SURVEYING IN THE STATE OF KENTUCKY, DO HEREBY CERTIFY THAT THIS PLAT IS A TRUE AND CORRECT REPRESENTATION OF THE LANDS SURVEYED AND HAS BEEN PREPARED IN CONFORMITY WITH THE STATUTORY REQUIREMENTS OF THE STATE OF KENTUCKY. THE SURVEY WAS PERFORMED UNDER MY DIRECT SUPERVISION USING THE METHOD OF RANDOM TRAVERSE. THE UNADJUSTED MATHEMATICAL ERROR OF CLOSURE WAS 1: 30,496 AND WAS NOT ADJUSTED. THE SURVEY SHOWN HEREON IS A URBAN CLASS SURVEY.

*Edison Elliott*

09.03.2020



