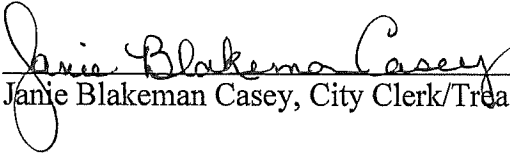


CERTIFICATION

I, Janie Blakeman Casey, Clerk of the City of Greensburg do hereby certify that, the above Resolution 02022009T is a true and correct copy as was presented to the City Council of the City of Greensburg at a Regular Called Meeting dated February 2nd, 2009.

Given under my hand this 2nd day of February, 2009



Janie Blakeman Casey, City Clerk/Treasurer

RECEIVED AND FILED
DATE December 30, 2009

TREY GRAYSON
SECRETARY OF STATE
COMMONWEALTH OF KENTUCKY
BY Hardie (Ed) Grayson

**A RESOLUTION OF THE CITY OF GREENSBURG
RESOLUTION NUMBER 02022009T**

**RELATING TO THE ANNEXATION INTO THE CITY OF GREENSBURG OF
CERTAIN UNINCORPORATED AREAS ADJACENT TO THE CURRENT
INCORPORATED BOUNDARIES OF THE CITY OF GREENSBURG**

WHEREAS, the City Council of the City of Greensburg has enacted numerous ordinances annexing property into the corporate limits of the City of Greensburg; and

WHEREAS, the City Council has determined that the corporate limits shall include the specific areas as listed below, complete with legal description; and

WHEREAS, the City wishes to provide a modern, accurate, easily identifiable legal description reflecting bearings and coordinates based upon the state plane coordinate system, including relevant GPS and GIS data, same having been certified by a professional land surveyor for each parcel; and

WHEREAS, the City of Greensburg wishes to comply with the requirements of Amended KRS 81A.4 70 effective July 13th, 2004, and

WHEREAS, the City does not intend to amend or replace its prior ordinance annexing, but rather to interpret the defined boundaries of the territory previously annexed and adopt a modern and accurate legal description of territory previously annexed.

**NOW THEREFORE BE IT RESOLVED BY THE CITY COUNCIL OF
GREENSBURG, KENTUCKY:**

SECTION ONE: That the City Council of the City of Greensburg hereby adopts the following legal description, and a plat attached hereto as prepared by Wm. Scott Vaughn, Licensed Professional Land Surveyor 3036 by new survey as an accurate depiction of the property previously annexed into the corporate city limits of the City of Greensburg by Ordinance 1993 GIVENS-MAYES-CAMPBELL, a copy of which is attached hereto as **AREA 1 DESCRIPTION**, and hereby adopts said new legal description and plat as the official legal description and plat to be adopted by the City of Greensburg for all purposes when referencing this prior annexation.

SECTION TWO: This new legal description as prepared by Wm. Scott Vaughn a Licensed Professional Land Surveyor No. 3036 is as follows:

**LEGAL DESCRIPTION FOR
GREENSBURG, KY ANNEXATION ORDINANCE 1993 Givens-Mayes-Campbell**

All bearings referenced herein are based on Kentucky State Plane South, NAD 83 Grid North.

A certain area of land located in Green County, Kentucky; contiguous to Annexations 1984 110.13P, 2004 Hidden Valley, and 1990 Industrial Foundation to the city limits of Greensburg, KY described as follows:

Beginning at a point in the north line of Annexation 1984 110.13P to the city limit of Greensburg, KY, said point intended to be in the east right-of-way line of U.S. Hwy. 68 / KY. Hwy. 61/70 and located at NAD 83 Kentucky State Plane South Coordinates N 1,981,250.15, E 1,714,046.26 as referenced by monuments RP 1 and RP 2, both (5/8") rebar, (24) inches in length, set in concrete with an aluminum cap stamped VAUGHAN ENGINEERING, PLS 3036, RP 1 located

at WGRK Radio Station at NAD 83, Kentucky State Plane South Coordinates N 1,977,680.79 (Lat. N 37 Deg. 15' 33.95") and E 1,708,733.75 (Long. W 85 Deg. 30' 54.90") and RP 2 located at Greensburg City Cemetery at NAD 83, Kentucky State Plane South Coordinates N 1,979,139.77 (Lat. N 37 Deg. 15' 48.27") and E 1,712,615.79 (Long. W 85 Deg. 30' 06.83"); thence with the north line of Annexation 1984 110.13P N 54 Deg. 57' 01" W 118.32 feet to a point, said point being the northwest corner of Annexation 1984 110.13P to the city limit of Greensburg, KY, in the east line of the 2004 Hidden Valley Annexation to the city limit of Greensburg, KY and intended to be in the west right-of-way line of U.S. Hwy. 68 / KY. Hwy. 61/70; thence with the west right-of-way line of U.S. Hwy. 68 / KY. Hwy. 61/70 and the 2004 Hidden Valley Annexation represented by the following courses: N 21 Deg. 02' 37" E 160.10 feet to a point; thence N 24 Deg. 13' 00" E 505.18 feet to a point; thence with the south right-of-way line of KY. Hwy. 61 and the north line of the 2004 Hidden Valley Annexation represented by the course N 64 Deg. 18' 00" W 610.64 feet to a point; thence crossing KY. Hwy. 61 N 20 Deg. 48' 28" E 116.58 feet to a point intended to be in the north right-of-way line of KY. Hwy. 61; thence with the north right-of-way line of KY. Hwy. 61 represented by the course N 70 Deg. 14' 16" W 315.02 feet to a point; thence leaving the north right of way line of KY. Hwy. 61 with a new city limit line the following courses: N 47 Deg. 24' 45" E 264.07 feet to a point; thence S 55 Deg. 25' 52" E 195.58 feet to a point; thence N 18 Deg. 33' 06" E 227.62 feet to a point; thence S 61 Deg. 25' 30" E 246.67 feet to a point; thence N 50 Deg. 01' 48" E 568.81 feet to a point; thence S 48 Deg. 07' 33" E 373.13 feet to a point intended to be in the east right-of-way line of U.S. Hwy. 68 / KY. Hwy. 61/70; thence with the east right-of-way line of U.S. Hwy. 68 / KY. Hwy. 61/70 represented by the course: N 26 Deg. 46' 29" E 283.36 feet to a point; thence with a new city limit line S 69 Deg. 35' 28" E 971.45 feet to a point in the west line of the 1990 Industrial Foundation Annexation to the city limit of Greensburg, KY; thence with the west line of the 1990 Industrial Foundation Annexation the following courses: S 69 Deg. 05' 22" W 255.00 feet to a point; thence S 55 Deg. 31' 54" W 52.85 feet to a point; thence with a new city limit line the following courses: N 63 Deg. 49' 51" W 346.13 feet to a point; thence S 46 Deg. 06' 44" W 240.16 feet to a point; thence N 65 Deg. 54' 39" W 90.06 feet to a point; thence N 46 Deg. 00' 40" W 264.62 feet to a point intended to be in the east right-of-way line of U.S. Hwy. 68 / KY. Hwy. 61/70 and previously described; thence with the east right-of-way line of U.S. Hwy. 68 / KY. Hwy. 61/70 represented by the course of S 23 Deg. 59' 12" W 682.61 feet to a point; thence with a new city limit line the following courses: S 73 Deg. 31' 48" E 202.22 feet to a point; thence N 60 Deg. 45' 58" E 260.69 feet to a point; thence S 50 Deg. 50' 37" E 63.37 feet to a point; thence S 46 Deg. 43' 39" W 344.93 feet to a point; thence S 43 Deg. 52' 56" E 433.77 feet to a point, said point being in the west line of the 1990 Industrial Foundation Annexation to the city limit of Greensburg, KY; thence with the line of the 1990 Industrial Foundation Annexation the following courses: S 50 Deg. 03' 47" W 190.13 feet to a point; thence S 63 Deg. 25' 06" W 47.16 feet to a point; thence S 61 Deg. 55' 32"

Page 2 of 2

LEGAL DESCRIPTION FOR


GREENSBURG, KY ANNEXATION ORDINANCE 1993 Givens-Mayes-Campbell

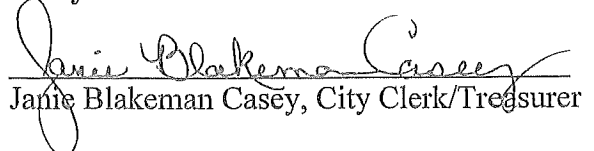
W 59.39 feet to a point; thence with a new city limit line the following courses: N 71 Deg. 59' 19" W 153.12 feet; thence N 74 Deg. 34' 11" W 170.20 feet to a point; thence S 29 Deg. 49' 20" W 256.63 feet to a point; thence N 69 Deg. 49' 56" W 275.24 feet to a point, said point intended to be in the east right-of-way line of U.S. Hwy. 68 / KY. Hwy. 61/70; thence with the east right-of-way line of U.S. Hwy. 68 / KY. Hwy. 61/70 represented by the course of S 16 Deg. 42' 32" W 95.28 feet to the point of beginning containing 32.74 acres more or less, according to a survey by Wm. Scott Vaughan, PLS 3,036, with Vaughan Engineering; Madisonville, KY on November 18, 2008.

Wm. Scott Vaughan, PLS

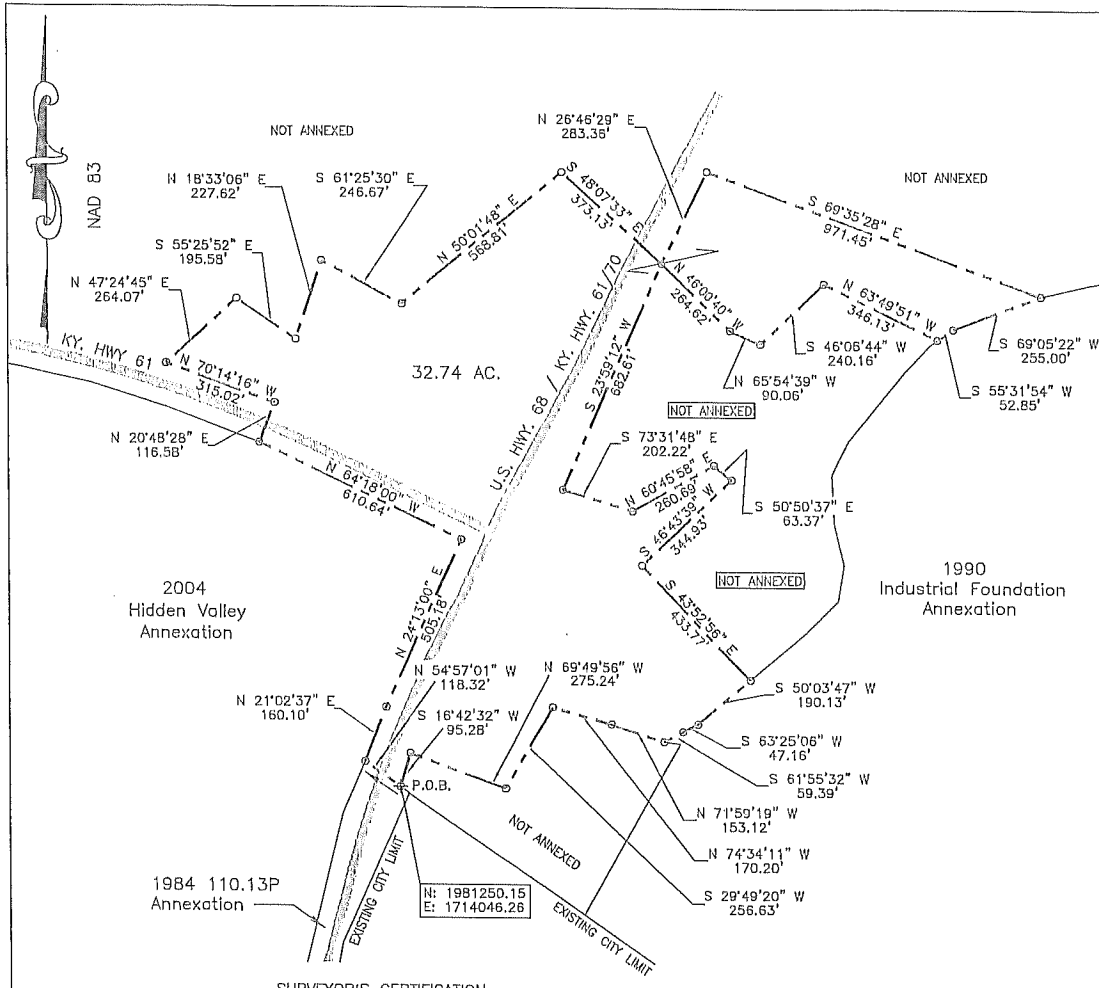
Date

That this RESOLUTION shall be in effect immediately.


George C. Cheatham, II, Mayor


Jamie Blakeman Casey, City Clerk/Treasurer

Dated this day 2nd of February, 2009



SURVEYOR'S CERTIFICATION

THE PURPOSE OF THIS PLAT IS TO DEPICT THE BOUNDARY OF THE ORIGINAL ANNEXATION ORDINANCE IDENTIFIED AS 1993 GIVENS-MAYES-CAMPBELL BY THE CITY OF GREENSBURG, KENTUCKY WHICH LIES OUTSIDE THE CURRENT BOUNDARY INDICATED BY THE OFFICE OF THE KENTUCKY SECRETARY OF STATE. THE BOUNDARY INDICATED IS BASED ON THE FOLLOWING COMPOSITED INFORMATION: FIELD SURVEY CONTROL WORK BY GPS METHODS ON NOVEMBER 18, 2008 WITH USUAL AND CUSTOMARY RESIDUALS AT THE TIME OF DATA COLLECTION, ANALYSIS OF THE ORIGINAL ORDINANCE DESCRIPTION(S), THE REVIEW OF THE ORIGINAL ORDINANCE DESCRIPTION(S) AND MAPPING INFORMATION WITH REPRESENTATIVES OF THE CITY OF GREENSBURG, ANALYSIS OF THE DEPICTION OF THE EXISTING CITY LIMIT BOUNDARY BY THE OFFICE OF THE KENTUCKY SECRETARY OF STATE, AND COMMON SENSE RECONCILIATION OF ALL SAID INFORMATION SOURCES BY VAUGHAN ENGINEERING OF MADISONVILLE, KENTUCKY.

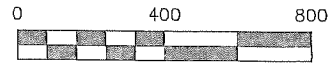
THE PURPOSE OF THIS BOUNDARY SURVEY IS TO DELINEATE THE LIMITS OF THE AFORESAID ANNEXATION. IT DOES NOT IN ANY WAY REFLECT A DETERMINATION OF INDIVIDUAL PARCEL BOUNDARIES AND SHOULD NOT BE USED FOR SUCH A PURPOSE.

ALL BEARINGS ARE BASED ON GRID NORTH OF THE KENTUCKY STATE PLANE COORDINATE SYSTEM, SOUTH ZONE, NAD 83.

SURVEY REFERENCE MONUMENTS ARE BOTH (5/8") REBAR, (24) INCHES IN LENGTH, SET IN CONCRETE WITH AN ALUMINUM CAP STAMPED VAUGHAN ENGINEERING, PLS 3036 HAVING COORDINATE INFORMATION AS FOLLOWS:

RP 1 - LOCATED AT WGRK RADIO STATION AT NAD 83, KENTUCKY STATE PLANE SOUTH COORDINATES N 1,977,680.79 (LAT. N 37 DEG. 15' 33.95") AND E 1,708,733.75 (LONG. W 85 DEG. 30' 54.90")

RP 2 - LOCATED AT GREENSBURG CITY CEMETERY AT NAD 83, KENTUCKY STATE PLANE SOUTH COORDINATES N 1,979,139.77 (LAT. N 37 DEG. 15' 48.27") AND E 1,712,615.79 (LONG. W 85 DEG. 30' 06.83")



PLAT OF ANNEXATION
ORDINANCE
1993 GIVENS-MAYES-CAMPBELL
CITY OF GREENSBURG, KY



VAUGHAN
engineering
CONSULTING ENGINEERS AND SURVEYORS
173 WEST LAKE STREET . MADISONVILLE, KENTUCKY 42431
TELEPHONE: (270) 821-2013

DRAWN BY	JMT	SCALE	1" = 400'
CHK'D	WSV	DATE	01-08-09
TRACED		APP'D	

**LEGAL DESCRIPTION FOR
GREENSBURG, KY ANNEXATION ORDINANCE 1993 Givens-Mayes-Campbell**

All bearings referenced herein are based on Kentucky State Plane South, NAD 83 Grid North.


A certain area of land located in Green County, Kentucky; contiguous to Annexations 1984 110.13P, 2004 Hidden Valley, and 1990 Industrial Foundation to the city limits of Greensburg, KY described as follows:


Beginning at a point in the north line of Annexation 1984 110.13P to the city limit of Greensburg, KY, said point intended to be in the east right-of-way line of U.S. Hwy. 68 / KY. Hwy. 61/70 and located at NAD 83 Kentucky State Plane South Coordinates N 1,981,250.15, E 1,714,046.26 as referenced by monuments RP 1 and RP 2, both (5/8") rebar, (24) inches in length, set in concrete with an aluminum cap stamped VAUGHAN ENGINEERING, PLS 3036, RP 1 located at WGRK Radio Station at NAD 83, Kentucky State Plane South Coordinates N 1,977,680.79 (Lat. N 37 Deg. 15' 33.95") and E 1,708,733.75 (Long. W 85 Deg. 30' 54.90") and RP 2 located at Greensburg City Cemetery at NAD 83, Kentucky State Plane South Coordinates N 1,979,139.77 (Lat. N 37 Deg. 15' 48.27") and E 1,712,615.79 (Long. W 85 Deg. 30' 06.83"); thence with the north line of Annexation 1984 110.13P N 54 Deg. 57' 01" W 118.32 feet to a point, said point being the northwest corner of Annexation 1984 110.13P to the city limit of Greensburg, KY, in the east line of the 2004 Hidden Valley Annexation to the city limit of Greensburg, KY and intended to be in the west right-of-way line of U.S. Hwy. 68 / KY. Hwy. 61/70; thence with the west right-of-way line of U.S. Hwy. 68 / KY. Hwy. 61/70 and the 2004 Hidden Valley Annexation represented by the following courses: N 21 Deg. 02' 37" E 160.10 feet to a point; thence N 24 Deg. 13' 00" E 505.18 feet to a point; thence with the south right-of-way line of KY. Hwy. 61 and the north line of the 2004 Hidden Valley Annexation represented by the course N 64 Deg. 18' 00" W 610.64 feet to a point; thence crossing KY. Hwy. 61 N 20 Deg. 48' 28" E 116.58 feet to a point intended to be in the north right-of-way line of KY. Hwy. 61; thence with the north right-of-way line of KY. Hwy. 61 represented by the course N 70 Deg. 14' 16" W 315.02 feet to a point; thence leaving the north right of way line of KY. Hwy. 61 with a new city limit line the following courses: N 47 Deg. 24' 45" E 264.07 feet to a point; thence S 55 Deg. 25' 52" E 195.58 feet to a point; thence N 18 Deg. 33' 06" E 227.62 feet to a point; thence S 61 Deg. 25' 30" E 246.67 feet to a point; thence N 50 Deg. 01' 48" E 568.81 feet to a point; thence S 48 Deg. 07' 33" E 373.13 feet to a point intended to be in the east right-of-way line of U.S. Hwy. 68 / KY. Hwy. 61/70; thence with the east right-of-way line of U.S. Hwy. 68 / KY. Hwy. 61/70 represented by the course: N 26 Deg. 46' 29" E 283.36 feet to a point; thence with a new city limit line S 69 Deg. 35' 28" E 971.45 feet to a point in the west line of the 1990 Industrial Foundation Annexation to the city limit of Greensburg, KY; thence with the west line of the 1990 Industrial Foundation Annexation the following courses: S 69 Deg. 05' 22" W 255.00 feet to a point; thence S 55 Deg. 31' 54" W 52.85 feet to a point; thence with a new city limit line the following courses: N 63 Deg. 49' 51" W 346.13 feet to a point; thence S 46 Deg. 06' 44" W 240.16 feet to a point; thence N 65 Deg. 54' 39" W 90.06 feet to a point; thence N 46 Deg. 00' 40" W 264.62 feet to a point intended to be in the east right-of-way line of U.S. Hwy. 68 / KY. Hwy. 61/70 and previously described; thence with the east right-of-way line of U.S. Hwy. 68 / KY. Hwy. 61/70 represented by the course of S 23 Deg. 59' 12" W 682.61 feet to a point; thence with a new city limit line the following courses: S 73 Deg. 31' 48" E 202.22 feet to a point; thence N 60 Deg. 45' 58" E 260.69 feet to a point; thence S 50 Deg. 50' 37" E 63.37 feet to a point; thence S 46 Deg. 43' 39" W 344.93 feet to a point; thence S 43 Deg. 52' 56" E 433.77 feet to a point, said point being in the west line of the 1990 Industrial Foundation Annexation to the city limit of Greensburg, KY; thence with the line of the 1990 Industrial Foundation Annexation the following courses: S 50 Deg. 03' 47" W 190.13 feet to a point; thence S 63 Deg. 25' 06" W 47.16 feet to a point; thence S 61 Deg. 55' 32"

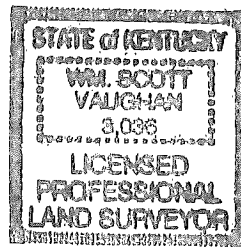
LEGAL DESCRIPTION FOR

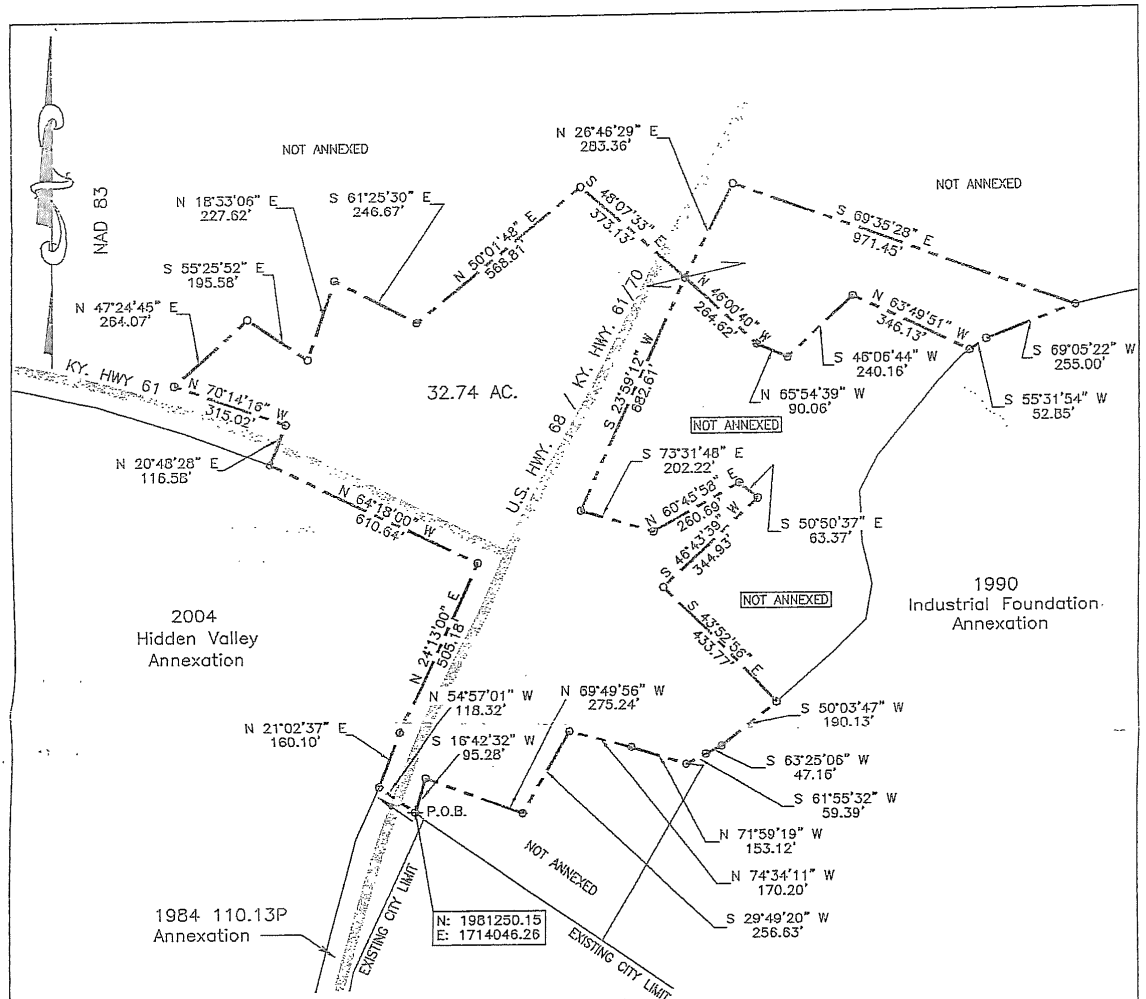
GREENSBURG, KY ANNEXATION ORDINANCE 1993 Givens-Mayes-Campbell

W 59.39 feet to a point; thence with a new city limit line the following courses: N 71 Deg. 59' 19" W 153.12 feet; thence N 74 Deg. 34' 11" W 170.20 feet to a point; thence S 29 Deg. 49' 20" W 256.63 feet to a point; thence N 69 Deg. 49' 56" W 275.24 feet to a point, said point intended to be in the east right-of-way line of U.S. Hwy. 68 / KY. Hwy. 61/70; thence with the east right-of-way line of U.S. Hwy. 68 / KY. Hwy. 61/70 represented by the course of S 16 Deg. 42' 32" W 95.28 feet to the point of beginning containing 32.74 acres more or less, according to a survey by Wm. Scott Vaughan, PLS 3,036, with Vaughan Engineering; Madisonville, KY on November 18, 2008.


Wm. Scott Vaughan, PLS


Date





SURVEYOR'S CERTIFICATION

THE PURPOSE OF THIS PLAT IS TO DEPICT THE BOUNDARY OF THE ORIGINAL ANNEXATION ORDINANCE IDENTIFIED AS 1993 GIVENS-MAYES-CAMPBELL BY THE CITY OF GREENSBURG, KENTUCKY WHICH LIES OUTSIDE THE CURRENT BOUNDARY INDICATED BY THE OFFICE OF THE KENTUCKY SECRETARY OF STATE. THE BOUNDARY INDICATED IS BASED ON THE FOLLOWING COMPOSITED INFORMATION: FIELD SURVEY CONTROL WORK BY GPS METHODS ON NOVEMBER 18, 2008 WITH USUAL AND CUSTOMARY RESIDUALS AT THE TIME OF DATA COLLECTION, ANALYSIS OF THE ORIGINAL ORDINANCE DESCRIPTION(S), THE REVIEW OF THE ORIGINAL ORDINANCE DESCRIPTION(S) AND MAPPING INFORMATION WITH REPRESENTATIVES OF THE CITY OF GREENSBURG, ANALYSIS OF THE DEPICTION OF THE EXISTING CITY LIMIT BOUNDARY BY THE OFFICE OF THE KENTUCKY SECRETARY OF STATE, AND COMMON SENSE RECONCILIATION OF ALL SAID INFORMATION SOURCES BY VAUGHAN ENGINEERING OF MADISONVILLE, KENTUCKY.

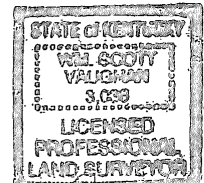
THE PURPOSE OF THIS BOUNDARY SURVEY IS TO DELINEATE THE LIMITS OF THE AFORESAID ANNEXATION. IT DOES NOT IN ANY WAY REFLECT A DETERMINATION OF INDIVIDUAL PARCEL BOUNDARIES AND SHOULD NOT BE USED FOR SUCH A PURPOSE.

ALL BEARINGS ARE BASED ON GRID NORTH OF THE KENTUCKY STATE PLANE COORDINATE SYSTEM, SOUTH ZONE, NAD 83.

SURVEY REFERENCE MONUMENTS ARE BOTH (5/8") REBAR, (24) INCHES IN LENGTH, SET IN CONCRETE WITH AN ALUMINUM CAP STAMPED VAUGHAN ENGINEERING, PLS 3036 HAVING COORDINATE INFORMATION AS FOLLOWS:

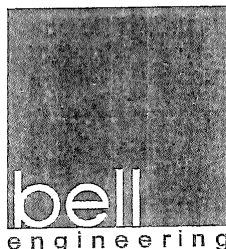
RP 1 - LOCATED AT WGRK RADIO STATION AT NAD 83, KENTUCKY STATE PLANE SOUTH COORDINATES N 1,977,680.79 (LAT. N 37 DEG. 15' 33.95") AND E 1,708,733.75 (LONG. W 85 DEG. 30' 54.90")

RP 2 - LOCATED AT GREENSBURG CITY CEMETERY AT NAD 83, KENTUCKY STATE PLANE SOUTH COORDINATES N 1,979,139.77 (LAT. N 37 DEG. 15' 48.27") AND E 1,712,615.79 (LONG. W 85 DEG. 30' 06.83")



Will Scott Vaughan 01/19/09
 0 400 800

PLAT OF ANNEXATION
 ORDINANCE
1993 GIVENS-MAYES-CAMPBELL
 CITY OF GREENSBURG, KY



VAUGHAN
 engineering
 CONSULTING ENGINEERS AND SURVEYORS
 173 WEST LAKE STREET . MADISONVILLE, KENTUCKY 42431
 TELEPHONE: (270) 821-2013

DRAWN BY	JMT	SCALE	1" = 400'
CHK'D	WSV	DATE	01-08-09
TRACED		APP'D	