

ORDINANCE NUMBER 20-83

AN ORDINANCE ANNEXING CERTAIN
UNINCORPORATED TERRITORY
DESCRIBED HEREIN, ADJACENT TO
THE CITY OF HIGHLAND HEIGHTS,
KENTUCKY, KNOWN AS 306 SUNSET
AVENUE, AND FOR WHICH
AN ORDINANCE NUMBER 8-83,
WAS ENACTED DECLARING THE
INTENTION OF THE CITY OF
HIGHLAND HEIGHTS TO ANNEX
SAID UNINCORPORATED TERRITORY.

WHEREAS, the City of Highland Heights, Kentucky has properly enacted and published an Ordinance Number 8-83, declaring the intention of the City to Annex certain unincorporated territory adjacent to the City, accurately defining the desirability of annexing said territory; and

WHEREAS over 60 days has passed since the publication of Ordinance Number 8-83, and no protest in opposition of said annexation has been received by the City,

BE IT ORDAINED BY THE CITY OF HIGHLAND HEIGHTS, KENTUCKY:

SECTION ONE

That pursuant to KRS 81A.420 and other relevant statutes, the City of Highland Heights, Kentucky hereby annexes certain unincorporated territory set out herein and set out in Ordinance 8-83 of this City.

SECTION TWO

That said territory is desirous to the city in that it increases tax revenues along with the geographic size of the City itself.

SECTION THREE

That said unincorporated territory is described and set out:

PARCEL NO. 1: Situated in Campbell County, Kentucky, and known and designated on Section No. Four of a certain map or plat of Highland Baby Farms, made by Renshaw and Breece, Engineers, of Huntington, West Virginia, which said map or plat of said Section Four is recorded in the office of the County Clerk of Campbell County, Kentucky, in Plat Book No. 56, at pages 244 to 247 as Farm Number 580 and Farm No. 581.

PARCEL NO. 2: Situated in Campbell County, Kentucky, and known and designated on Section No. Four (4) of a certain map or plat of Highland Baby Farms, made by Renshaw and Breece, Engineers, of Huntington, West Virginia, which said map or plat of Section Four (4) is recorded in the office of the County Clerk of Campbell County, Kentucky, in Plat Book No. 56 and pages 244 to 247 as part of Farm No. 620.

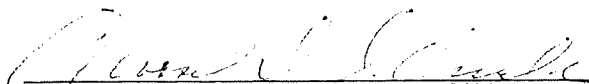
Beginning at a point designated as the dividing line between Lots Nos., 581 and 582 and extending said dividing line in the same direction westwardly forty (40) feet, more or less, to Gibson Road; thence northwardly along Gibson Road to a point in the rear line of Lot No. 580, 12.20 feet south of the line between Lots No. 579 and 580; thence from said point southwardly along the rear line of Lots No. 580 and 581 to the place of beginning. Being the northerly part of Lot No. 620, of Section four (4) of a plat of Highland Baby Farms as recorded in Plat Book 3A, Page 29.

SECTION FOUR

That this Ordinance shall be signed by the Mayor and attested by the City Clerk-Treasurer and shall become in effect as soon as possible by law.

First Reading the 28th day of July, 1983.

Passed on the second reading the 11 day of August, 1983.

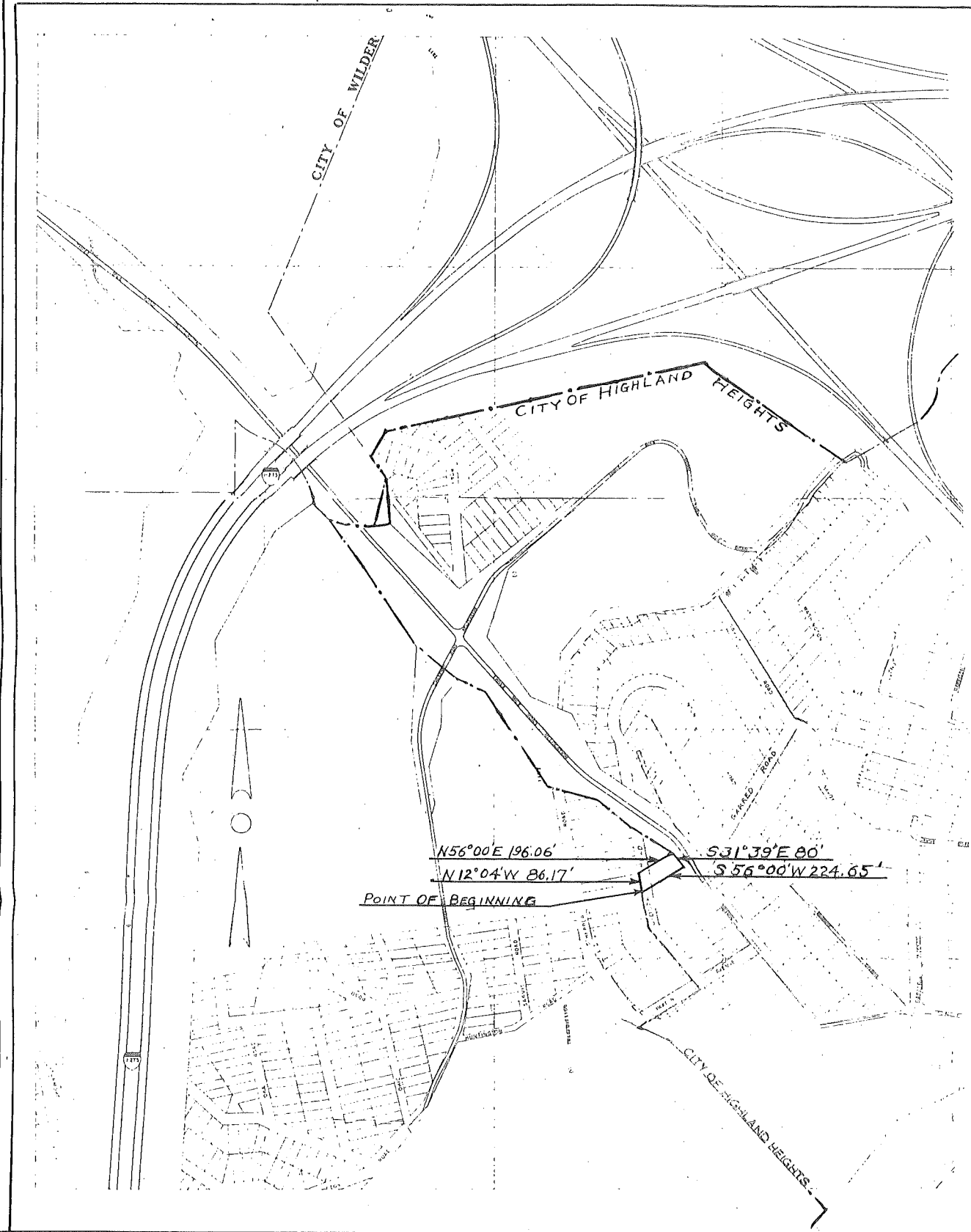


ELWOOD D. SCHNEIDER, MAYOR

ATTESTED:


CITY CLERK-TREASURER
MARY ALICE TARVIN

Published the 18 day of August, 1983, in the Campbell County Recorder.



PARCEL ANNEXED
 BY THE
 CITY OF HIGHLAND HEIGHTS KY.
 SCALE 1" = 400' ORDINANCE No. 20-83
 EARL L. PAUL L.S. & P.E.
 CITY ENGINEER

STATE OF KENTUCKY
 EARL L. PAUL
 650
 REGISTERED
 LAND SURVEYOR

