

# City of Hillview

Jim Eadens • Mayor

283 Crestwood Drive  
Louisville, Kentucky 40229  
(502) 957-5280 • Fax (502) 955-5673

January 19, 2012

Office of Secretary of State  
Attn: Kandie Adkinson  
702 Capital Avenue, Room T40  
Frankfort, KY 40601

Re: City of Hillview Resolutions  
adopting and accurate legal  
description for territories  
previously annexed by Hillview

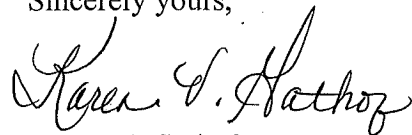
Dear Ms. Adkinson:

Enclosed you will find a copy of the following resolutions:

City of Hillview Resolution 2012-01  
City of Hillview Resolution 2012-02  
City of Hillview Resolution 2012-03  
City of Hillview Resolution 2012-05  
City of Hillview Resolution 2012-06  
City of Hillview Resolution 2012-07  
City of Hillview Resolution 2012-08

Resolution 2012-04 will be sent in a later package because at the present time a map has not provided to me. I hope I have included everything you will need to get these annexations fixed once and for all. From what I understand this has become a rather lengthy process. I am very new to the process though, and would greatly appreciate any guidance you can offer. Please just let me know if I need to provide anything else to you in order to facilitate this process. Thank you for your assistance.

Sincerely yours,



Karen V. Gathof  
City Clerk

**RESOLUTION NO. 2012-03**

AN RESOLUTION ADOPTING A MODERN AND ACCURATE LEGAL DESCRIPTION FOR TERRITORY PREVIOUSLY ANNEXED BY THE CITY OF HILLVIEW.

WHEREAS, the City of Hillview was previously incorporated pursuant to a Judgment of the Bullitt Circuit Court in compliance with then existing Kentucky Revised Statutes, and

WHEREAS, the City of Hillview has enacted various ordinances annexing real estate into the municipal boundaries of the City of Hillview, and

WHEREAS, each individual annexation contained a legal description in compliance with then existing Kentucky Revised Statutes and from prior surveys which were prepared by now unknown individuals, and further reference documentation and boundaries of property that may no longer be in existence, and

WHEREAS, the City of Hillview wishes to provide an accurate easily identifiable legal description reflecting bearings and coordinates based upon the State plain coordinate system, including relevant GPS and GIS data, same having been certified by a professional land surveyor, and

WHEREAS, the City of Hillview is mandated to comply with the requirements of Kentucky Revised Statutes 81A.470 now in effect requiring an accurate map of the City's boundaries and any new annexations, and

WHEREAS, the City of Hillview does not amend or replace its prior ordinances annexing, but rather to interpret the defined boundaries of the territory previously annexed and adopt, an accurate legal description of real estate previously annexed into the City of Hillview, now, therefore,

BE IT RESOLVED by the City Council of the City of Hillview, Kentucky as follows:

SECTION I: The City Council of the City of Hillview hereby reaffirms and incorporates herein the description of the prior annexation Ordinance 2010-17 and adopts the legal description and plat attached hereto as Exhibit "A" as if set forth herein in full as prepared by Carl D. Comer, Professional Land Surveyor No. 2767 by a new survey as an accurate depiction of the real estate previously annexed into the municipal boundaries of the City of Hillview, and hereby adopts said new legal description and plat as the official legal description and plat of the previous annexation into the municipal boundaries of the City of Hillview for all purposes without referencing each and every prior annexation description.

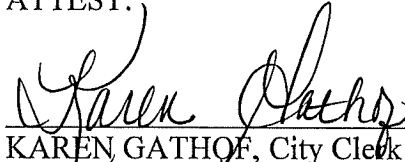
Adopted this 16th day of January, 2012.

Votes For 5; Votes Against 0; Not Voting \_\_\_\_\_.

  
\_\_\_\_\_

JAMES EADENS, Mayor

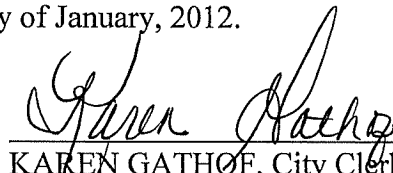
ATTEST:

  
\_\_\_\_\_

KAREN GATHOF, City Clerk

I, Karen Gathof, City Clerk of the City of Hillview, Bullitt County, Kentucky, do hereby certify that the above Resolution No. 2012-03 is a true and correct copy as was presented to the City Council of the City of Hillview at there regular scheduled meeting on January 16, 2012.

Given under my hand this 16 day of January, 2012.

  
\_\_\_\_\_

KAREN GATHOF, City Clerk

## **METES AND BOUNDS DESCRIPTION OF THE CITY OF HILLVIEW**

A 10.71 acre parcel of land located in the County of Bullitt,  
State of Kentucky and more particularly described as follows:

Beginning at a point said point being in the northeast corner of the Jefferson Gun Club (Deed Book 113 Page 95 and Deed Book 110 Page 469) in the west property line of Willabrook, Inc. (Deed Book 368 Page 392) which is the current boundary of the City of Hillview as established in City of Hillview Ordinance No. 90-17, thence with the north property line of the Jefferson Gun Club N 86° 46' 10" W 589.95' to a point in the southeast corner of Albert Lanier (Deed Book 277 Page 597), thence with the east property line of Albert Lanier (Deed Book 277 Page 597) N 30° 53' 14" E 488.17' to a point, thence N 39° 58' 57" E 510.28' to a point, thence N 22° 23' 37" E 1121.53' to a point in the south property line of Jimmy McWhorter (Deed Book 526 Page 182), thence with the current boundary of the City of Hillview S 85° 52' 22" E 227.37' to a point in the west right of way of Interstate 65, thence with the west right of way of Interstate 65 S 01° 28' 43" E 212.06' to a point, thence S 12° 25' 39" E 46.65' to a point in the north property line of Willabrook, Inc. (Deed Book 368 Page 392) which is the current boundary of the City of Hillview as established in City of Hillview Ordinance No. 90-17, thence with the west boundary line of Willabrook, Inc. (Deed Book 368 Page 392) with the current boundary of the City of Hillview S 22° 18' 29" W 1736.15' to the point of beginning containing 10.71 acres as shown by survey of Carl D. Comer PLS #2767 dated August 16, 2010.

8/17/10

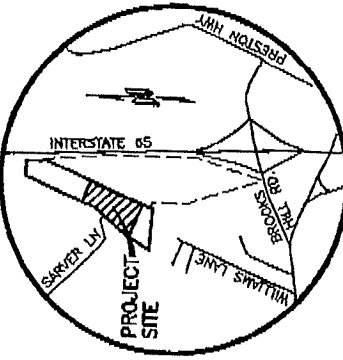
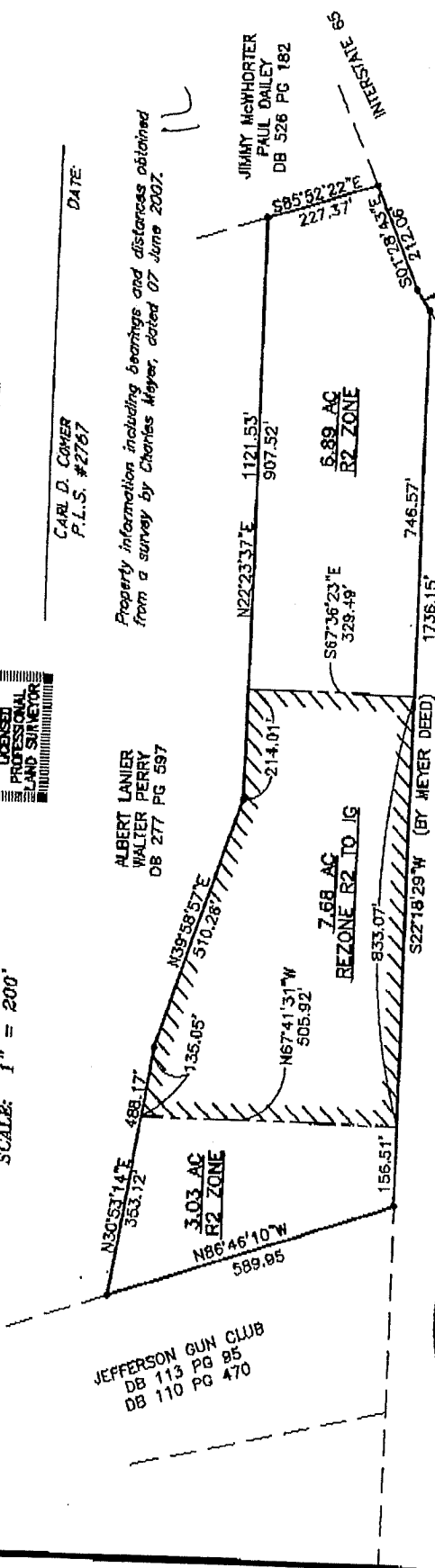
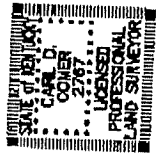
I hereby certify that this plat was prepared for presentation as a supporting document for re-zoning a tract of land. Field surveying has not been performed to locate the corners of the tract in the field. Pins have not been established at the corners of the tract to be re-zoned.

DATE: \_\_\_\_\_  
 CARL D. COVER  
 P.L.S. #2767

Property information including bearings and distances obtained from a survey by Charles Meyer, dated 07 June 2007.



GRAPHIC SCALE  
 SCALE: 1" = 200'



VICINITY MAP (N.I.S.)

SOURCE OF TITLE: DEED BOOK: 707 PAGE: 457	DRAWING DATE: 16 AUGUST 2010
PROPERTY OWNER: G. W. CHANDLER 2605 TURBRIDGE ST. AUGUSTINE, FL 32092 904-687-7877	PREPARED BY: DOUG COVER, P.E., P.L.S. 510 OLD MILL STREAM LANE SHEPHERDSVILLE, KY 40165 (502) 608-5113 CELL

WILLABROOK, INC.  
 DB 388 PG 392  
 R2 ZONE

Handwritten notes: "B. 1" and "200/200"