



CITY OF HOPKINSVILLE
KENTUCKY

42241-0707

T. MARK WITHERS, II
CAO/CITY CLERK

P.O. BOX 707
502/887-4000
FAX 502/887-4068
TDD 502/887-4287

October 7, 1996

Mr. John Y. Brown, III
Secretary of State
Capitol
Frankfort KY 40601

OCT 9 1996

SECRETARY OF STATE
COMMONWEALTH OF KY

Dear Mr. Brown:

I am providing you with a map and certified copy of Ordinance
No. 18-96 (41- A Annexation (ag district); as required by
KRS.81A.470.


Sincerely,

T. Mark Withers, II
CAO/City Clerk

CERTIFICATION

I, T. Mark Withers, II, City Clerk of the City of Hopkinsville, hereby certify that the foregoing is a true and accurate copy of Ordinance No. 18-96, of the City of Hopkinsville introduced and given first reading on August 20, 1996 and given second reading and enacted on August 21, 1996, and I am the custodian of the original, which is maintained at the Lackey Municipal, 101 N. Main Street, Hopkinsville, Kentucky 42240.

10-7-96
Date
Seal


T. Mark Withers, II
CAO/City Clerk

ORDINANCE NO. 18-96

**AN ORDINANCE ANNEXING TERRITORY
INTO THE CITY OF HOPKINSVILLE, KENTUCKY**

**NOW, THEREFORE, BE IT ORDAINED BY THE CITY COUNCIL
OF THE CITY OF HOPKINSVILLE, AS FOLLOWS:**

SECTION ONE

The City Council of the City of Hopkinsville does hereby state and declare an area described in Exhibit A to be annexed into the City limits of Hopkinsville. Exhibit A is attached hereto and incorporated herein by the reference as if fully set forth.

SECTION TWO

Pursuant to House Bill 466 adopted in the 1994 Kentucky General Assembly, that amended KRS 81A.412 to permit "consent annexation," all property owners involved have requested to be annexed immediately into the City of Hopkinsville under said house bill and no Ordinance of Intent is required.

SECTION THREE

The area of property to be annexed is:

- A. Adjacent to current City of Hopkinsville boundaries and has contiguous boundaries to the current City of Hopkinsville limits at the time of these annexation proceedings.
- B. Urban in character or suitable for further urban development

without unreasonable delay.

C. Not included within the boundary of another incorporated city.

SECTION FOUR

The City Council of the City of Hopkinsville declares that the service delivery plan and City taxes will be in effect on the 1st day after publication of this ordinance.

SECTION FIVE

Any and all existing ordinances inconsistent with this ordinance are repealed.

SECTION SIX

If any section, subsection, sentence, clause, or phrase of this ordinance is held unconstitutional or otherwise invalid, such infirmities shall not affect the validity of the remaining portions of this ordinance.

SECTION SEVEN

This ordinance shall become effective upon its passage, approval and publication according to law.

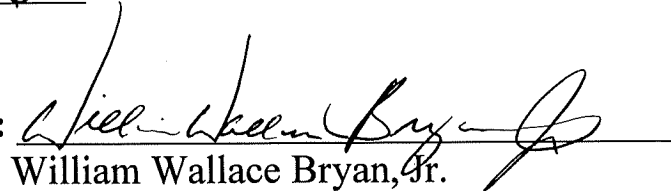
PUBLICLY READ AND PASSED FIRST TIME:

August 20, 1996

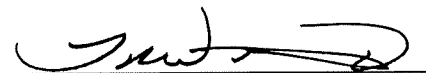
PUBLICLY READ AND PASSED SECOND TIME:

August 21, 1996

APPROVED:


William Wallace Bryan, Jr.
Mayor

ATTEST:


T. Mark Withers, II
CAO/City Clerk



83 EAST PUBLIC SQUARE ■ P.O. BOX 244 ■ ELKTON, KENTUCKY 42220-0244

(502) 265-5161 (502) 885-9968 FAX (502) 265-2297

**ANNEXATION SURVEY FOR THE
CITY OF HOPKINSVILLE, KENTUCKY**

TRACT NUMBER ONE (1):

BEGINNING at a point, said point being a corner of the existing Corporate Limits of the City of Hopkinsville, Kentucky, and being located in the centerline of Highway Number 1453, said point of beginning also being located 40 feet East of the centerline of the Northbound lane of U.S. Highway Number 41-A; thence a line with the centerline of Highway Number 1453, South 81 degrees 54 minutes 41 seconds East, 1,353.44 feet to a point in said line at its point of intersection with the West right-of-way line of the U.S. Army Railroad; thence a line with said right-of-way, South 15 degrees 22 minutes 23 seconds East, 7,509.76 feet to a point in said line, said point being located North 100 feet perpendicular to the North right-of-way line of Interstate Number 24; thence a line North 100 feet perpendicular to and parallel with the North right-of-way line of Interstate Number 24, the next fourteen (14) calls as follows:

North 60 degrees 53 minutes 03 seconds West, 499.60 feet to a point;
North 51 degrees 36 minutes 02 seconds West, 254.59 feet to a point;
North 25 degrees 07 minutes 21 seconds West, 247.89 feet to a point;
North 33 degrees 30 minutes 19 seconds West, 207.83 feet to a point;
North 33 degrees 42 minutes 10 seconds West, 422.96 feet to a point;
North 52 degrees 39 minutes 12 seconds West, 437.91 feet to a point;
North 82 degrees 51 minutes 30 seconds West, 397.11 feet to a point;
North 71 degrees 43 minutes 03 seconds West, 41.91 feet to a point;
North 23 degrees 09 minutes 29 seconds West, 38.96 feet to a point;
North 12 degrees 21 minutes 04 seconds West, 284.66 feet to a point;
North 12 degrees 18 minutes 17 seconds West, 202.35 feet to a point;
North 20 degrees 27 minutes 29 seconds West, 306.44 feet to a point;
North 16 degrees 19 minutes 41 seconds West, 633.84 feet to a point; thence a line, North 11 degrees 56 minutes 57 seconds West, 288.50 feet to a point; thence a line, South 78 degrees 06 minutes 37 seconds West, 100.00 feet to a point located in the line of the existing Corporate Limits of the City of Hopkinsville, Kentucky, said point also being located 40 feet East of the centerline of the Northbound lane of U.S. Highway Number 41-A; thence a line with said Corporate Limits, the next two (2) calls as follows:

North 11 degrees 53 minutes 23 seconds West, 1,045.93 feet to a point;
North 11 degrees 47 minutes 23 seconds West, 3,330.63 feet to the point of beginning and containing 214.946 Acres.

The above description was prepared from a physical survey performed during the month of February 1996, by William D. Harris, Kentucky Registered Land Surveyor Number 2499, and is subject to all easements and right-of-ways of record and in existence.



83 EAST PUBLIC SQUARE ■ P.O. BOX 244 ■ ELKTON, KENTUCKY 42220-0244

(502) 265-5161 (502) 885-9968 FAX (502) 265-2297

**ANNEXATION SURVEY FOR THE
CITY OF HOPKINSVILLE, KENTUCKY**

TRACT NUMBER TWO (2):

BEGINNING at a point, said point being a corner to the existing Corporate Limits of the City of Hopkinsville, Kentucky, said point of beginning also being located 40 feet West of the centerline of the Southbound lane of U.S. Highway Number 41-A; thence a line with said Corporate Limits, the next two (2) calls as follows:

South 11 degrees 47 minutes 23 seconds East, 563.21 feet to a point;
South 11 degrees 53 minutes 23 seconds East, 1,574.70 feet to a point in said line;
thence a line North 100 feet perpendicular to and parallel with the right-of-way line of Interstate Number 24, the next nine (9) calls as follows:

South 78 degrees 06 minutes 37 seconds West, 100.12 feet to a point;
South 09 degrees 09 minutes 42 seconds East, 447.20 feet to a point;
South 05 degrees 34 minutes 55 seconds East, 253.34 feet to a point;
South 10 degrees 52 minutes 53 seconds East, 421.06 feet to a point;
South 18 degrees 42 minutes 21 seconds West, 115.05 feet to a point;
South 42 degrees 57 minutes 41 seconds West, 82.14 feet to a point;
South 67 degrees 51 minutes 48 seconds West, 79.66 feet to a point;
North 88 degrees 56 minutes 00 seconds West, 68.00 feet to a point;
North 67 degrees 32 minutes 36 seconds West, 76.27 feet to a point; thence a line being located 540 feet West of and parallel with the centerline of the Southbound lane of U.S. Highway Number 41-A, the next two (2) calls as follows:

North 11 degrees 53 minutes 23 seconds West, 2,796.42 feet to a point;
North 11 degrees 47 minutes 24 seconds West, 738.03 feet to a point corner to the existing Corporate Limits of the City of Hopkinsville, Kentucky; thence a line with said Corporate Limits, South 82 degrees 14 minutes 32 seconds East, 519.97 feet to a the point of beginning and containing 35.172 Acres.

The above description was prepared from a physical survey performed during the month of February 1996, by William D. Harris, Kentucky Registered Land Surveyor Number 2499, and is subject to all easements and right-of-ways of record and in existence.

U.S. HIGHWAY 41-A
ANNEXATION
to the
CITY OF HOPKINSVILLE
Hopkinsville, Kentucky

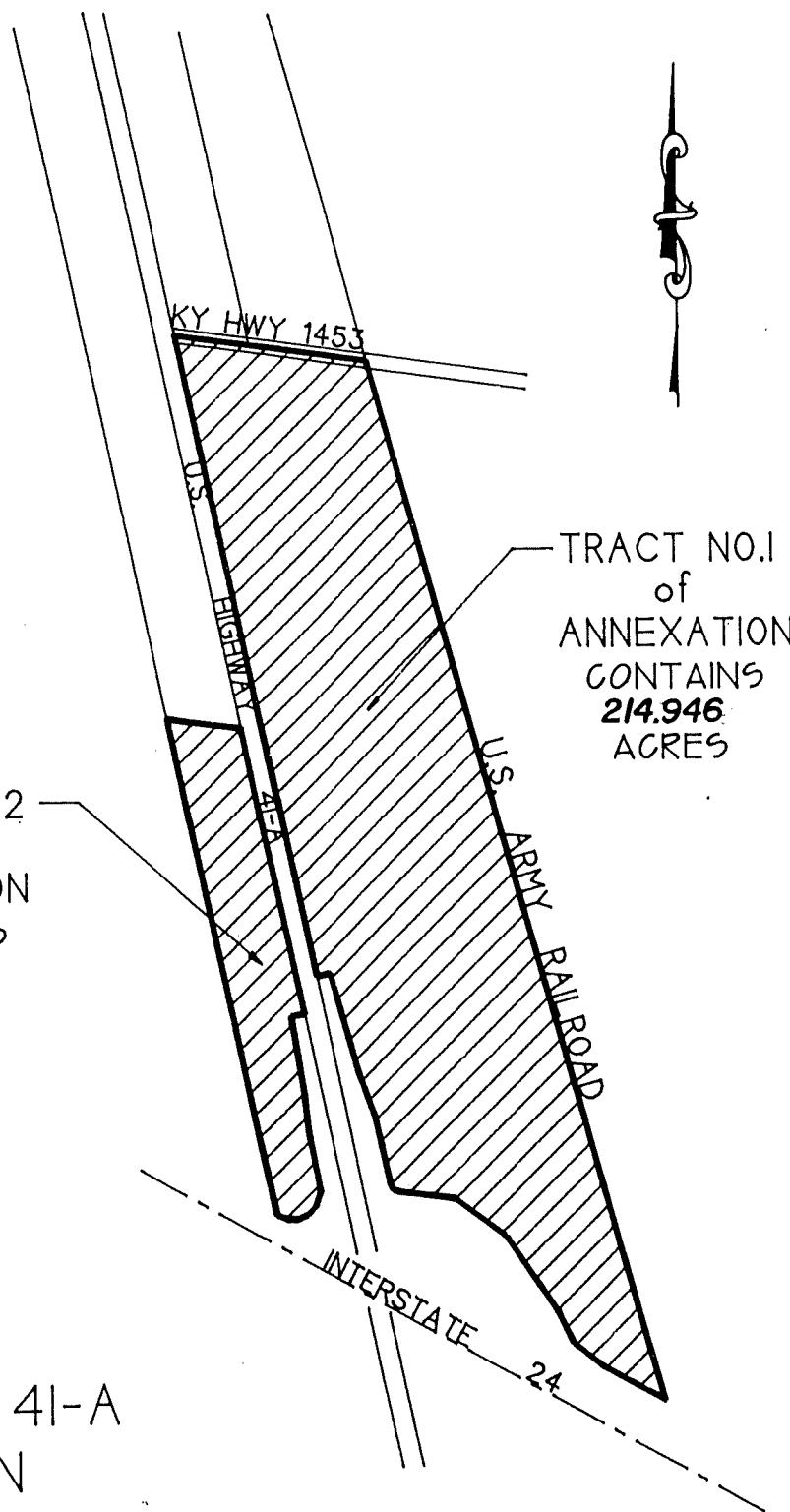
Scale: 1" = 1,320' (1/4 Mile)

Date : **August 20, 1996**

TRACT NO.2
of
ANNEXATION
CONTAINS
35.172
ACRES

TRACT NO.1
of
ANNEXATION
CONTAINS
214.946
ACRES

CONTAINING
250.118
TOTAL ACRES



18. Legal Notices	18. Legal Notices	18. Legal Notices	18. Legal Notices	18. Legal Notices
-------------------	-------------------	-------------------	-------------------	-------------------

ORDINANCE NO. 18-96

AN ORDINANCE ANNEXING TERRITORY INTO THE CITY OF HOPKINSVILLE, KENTUCKY

NOW, THEREFORE, BE IT ORDAINED BY THE CITY COUNCIL OF THE CITY OF HOPKINSVILLE, KENTUCKY, AS FOLLOWS:

SECTION ONE
The City Council of the City of Hopkinsville does hereby state and declare an area described in Exhibit A to be annexed into the City limits of Hopkinsville. Exhibit A is attached hereto and incorporated herein by the reference as if fully set forth.

SECTION TWO
Payment to House Bill 468 adopted in the 1984 Kentucky General Assembly that amended KRS 84.412 to permit "consent annexation," all property owners involved were requested to be annexed immediately into the City of Hopkinsville under said House Bill and no Ordinance of Intent is required.

SECTION THREE
The area of property to be annexed is:
A. Adjacent to the current City of Hopkinsville boundaries and has contiguous boundaries to the current City of Hopkinsville limits at the time of the annexation.
B. Urban in character or suitable for further urban development without unreasonable delay.
C. Not included within the boundaries of another incorporated city.

SECTION FOUR
The City Council of the City of Hopkinsville declares that the service delivery plan and City taxes will be in effect on the 1st day after publication of this ordinance.

SECTION FIVE
Any and all existing ordinances inconsistent with this ordinance are repealed.

SECTION SIX
If any section, subsection, sentence, clause, or phrase of this ordinance is held unconstitutional or otherwise invalid, such invalidities shall not affect the validity of the remaining portions of this ordinance.

SECTION SEVEN
This ordinance shall become effective upon its passage, approval and publication according to law.

PUBLICLY READ AND PASSED FIRST TIME: August 20, 1986
PUBLICLY READ AND PASSED SECOND TIME: August 21, 1986
APPROVED: William Wallace Bryan, Jr.
Mayor
ATTEST: T. Mark Wilburn, II
Clerk

EXHIBIT A
Harris & Harris Surveying Company
Registered Land Surveyors
P.O. Box 244 • Eldon, Kentucky 40220-0244
FAX (502)265-2297
ANNEXATION SURVEY FOR THE
CITY OF HOPKINSVILLE, KENTUCKY

TRACT NUMBER ONE (1):
BEGINNING at a point, said point being a corner of the existing Corporate Limits of the City of Hopkinsville, Kentucky, and being located in the center of Highway Number 143, said point of beginning also being located 40 feet East of the centerline of the Northbound lane of U.S. Highway Number 41-A, thence North 81 degrees 34 minutes 41 seconds East, 1,353.44 feet to a point in said line at its point of intersection with the West right-of-way line of the U.S. Highway Number 41-A, thence North 15 degrees 22 minutes 23 seconds East, 7,593.76 feet to a point in said line, said point being located North 100 feet perpendicular to the North right-of-way line of Interstate Number 24, thence a line North 100 feet perpendicular to and parallel with the North right-of-way line of Interstate Number 24, the exact metes and bounds as follows:

North 81 degrees 34 minutes 41 seconds East, 1,353.44 feet to a point, North 15 degrees 22 minutes 23 seconds East, 7,593.76 feet to a point, North 100 feet perpendicular to and parallel with the North right-of-way line of Interstate Number 24, thence a line North 100 feet perpendicular to and parallel with the North right-of-way line of Interstate Number 24, the exact metes and bounds as follows:

North 81 degrees 34 minutes 41 seconds East, 1,353.44 feet to a point, North 15 degrees 22 minutes 23 seconds East, 7,593.76 feet to a point, North 100 feet perpendicular to and parallel with the North right-of-way line of Interstate Number 24, thence a line North 100 feet perpendicular to and parallel with the North right-of-way line of Interstate Number 24, the exact metes and bounds as follows:

North 81 degrees 34 minutes 41 seconds East, 1,353.44 feet to a point, North 15 degrees 22 minutes 23 seconds East, 7,593.76 feet to a point, North 100 feet perpendicular to and parallel with the North right-of-way line of Interstate Number 24, thence a line North 100 feet perpendicular to and parallel with the North right-of-way line of Interstate Number 24, the exact metes and bounds as follows:

North 81 degrees 34 minutes 41 seconds East, 1,353.44 feet to a point, North 15 degrees 22 minutes 23 seconds East, 7,593.76 feet to a point, North 100 feet perpendicular to and parallel with the North right-of-way line of Interstate Number 24, thence a line North 100 feet perpendicular to and parallel with the North right-of-way line of Interstate Number 24, the exact metes and bounds as follows:

North 81 degrees 34 minutes 41 seconds East, 1,353.44 feet to a point, North 15 degrees 22 minutes 23 seconds East, 7,593.76 feet to a point, North 100 feet perpendicular to and parallel with the North right-of-way line of Interstate Number 24, thence a line North 100 feet perpendicular to and parallel with the North right-of-way line of Interstate Number 24, the exact metes and bounds as follows:

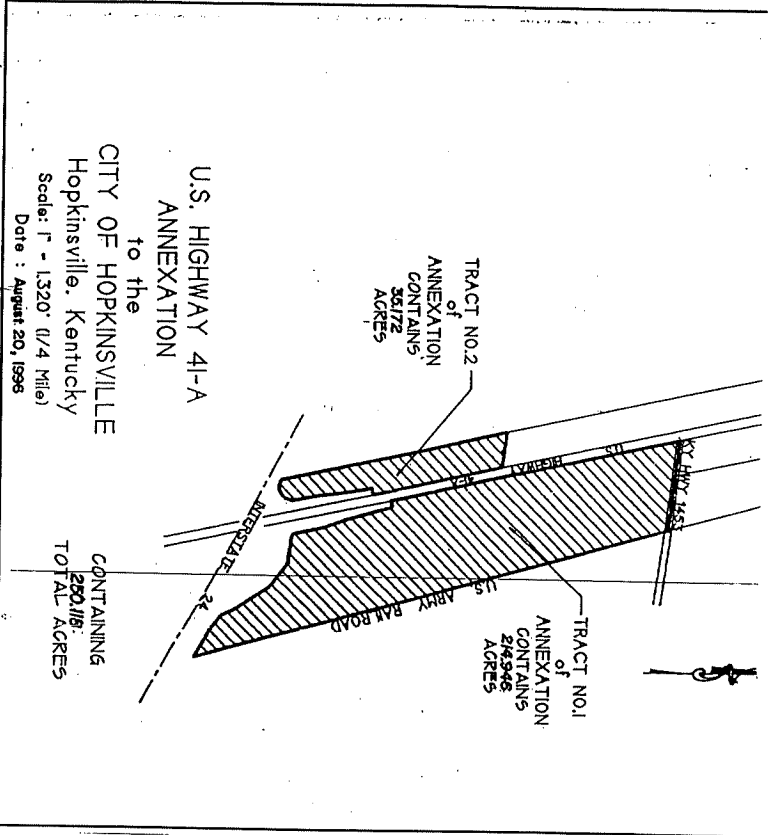
North 81 degrees 34 minutes 41 seconds East, 1,353.44 feet to a point, North 15 degrees 22 minutes 23 seconds East, 7,593.76 feet to a point, North 100 feet perpendicular to and parallel with the North right-of-way line of Interstate Number 24, thence a line North 100 feet perpendicular to and parallel with the North right-of-way line of Interstate Number 24, the exact metes and bounds as follows:

North 81 degrees 34 minutes 41 seconds East, 1,353.44 feet to a point, North 15 degrees 22 minutes 23 seconds East, 7,593.76 feet to a point, North 100 feet perpendicular to and parallel with the North right-of-way line of Interstate Number 24, thence a line North 100 feet perpendicular to and parallel with the North right-of-way line of Interstate Number 24, the exact metes and bounds as follows:

North 81 degrees 34 minutes 41 seconds East, 1,353.44 feet to a point, North 15 degrees 22 minutes 23 seconds East, 7,593.76 feet to a point, North 100 feet perpendicular to and parallel with the North right-of-way line of Interstate Number 24, thence a line North 100 feet perpendicular to and parallel with the North right-of-way line of Interstate Number 24, the exact metes and bounds as follows:

North 81 degrees 34 minutes 41 seconds East, 1,353.44 feet to a point, North 15 degrees 22 minutes 23 seconds East, 7,593.76 feet to a point, North 100 feet perpendicular to and parallel with the North right-of-way line of Interstate Number 24, thence a line North 100 feet perpendicular to and parallel with the North right-of-way line of Interstate Number 24, the exact metes and bounds as follows:

North 81 degrees 34 minutes 41 seconds East, 1,353.44 feet to a point, North 15 degrees 22 minutes 23 seconds East, 7,593.76 feet to a point, North 100 feet perpendicular to and parallel with the North right-of-way line of Interstate Number 24, thence a line North 100 feet perpendicular to and parallel with the North right-of-way line of Interstate Number 24, the exact metes and bounds as follows:



U.S. HIGHWAY 41-A
to the
ANNEXATION
CITY OF HOPKINSVILLE
Hopkinsville, Kentucky
Scale: 1" = 1,320' (1/4 Mile)
Date: August 20, 1996

CONTAINING
250.118
TOTAL ACRES

TRACT NO. 2
of
ANNEXATION
CONTAINS
15,172
ACRES

TRACT NO. 1
of
ANNEXATION
CONTAINS
24,948
ACRES

TRACT NUMBER TWO (2):
BEGINNING at a point, said point being a corner of the existing Corporate Limits of the City of Hopkinsville, Kentucky, said point of beginning being located in the center of Highway Number 143, said point of beginning also being located 40 feet East of the centerline of the Northbound lane of U.S. Highway Number 41-A, thence a line with said Corporate Limits the next two (2) calls as follows:

South 11 degrees 47 minutes 23 seconds East, 563.21 feet to a point, South 11 degrees 53 minutes 23 seconds East, 1,974.70 feet to a point in said line, thence a line North 100 feet perpendicular to and parallel with the right-of-way line of Interstate Number 24, the next line (3) calls as follows:

South 78 degrees 06 minutes 37 seconds West, 100.12 feet to a point, South 09 degrees 09 minutes 42 seconds East, 447.20 feet to a point, South 42 degrees 42 minutes 21 seconds West, 1,116.65 feet to a point, South 42 degrees 57 minutes 41 seconds West, 82.14 feet to a point, South 72 degrees 51 minutes 48 seconds West, 73.66 feet to a point, North 88 degrees 56 minutes 00 seconds West, 68.00 feet to a point, North 67 degrees 32 minutes 35 seconds West, 78.27 feet to a point, thence a line North 100 feet perpendicular to and parallel with the centerline of the Southbound lane of U.S. Highway Number 41-A, the next two (2) calls as follows:

South 78 degrees 06 minutes 37 seconds West, 100.12 feet to a point, South 09 degrees 09 minutes 42 seconds East, 447.20 feet to a point, South 42 degrees 42 minutes 21 seconds West, 1,116.65 feet to a point, South 42 degrees 57 minutes 41 seconds West, 82.14 feet to a point, South 72 degrees 51 minutes 48 seconds West, 73.66 feet to a point, North 88 degrees 56 minutes 00 seconds West, 68.00 feet to a point, North 67 degrees 32 minutes 35 seconds West, 78.27 feet to a point, thence a line North 100 feet perpendicular to and parallel with the centerline of the Southbound lane of U.S. Highway Number 41-A, the next two (2) calls as follows:

South 78 degrees 06 minutes 37 seconds West, 100.12 feet to a point, South 09 degrees 09 minutes 42 seconds East, 447.20 feet to a point, South 42 degrees 42 minutes 21 seconds West, 1,116.65 feet to a point, South 42 degrees 57 minutes 41 seconds West, 82.14 feet to a point, South 72 degrees 51 minutes 48 seconds West, 73.66 feet to a point, North 88 degrees 56 minutes 00 seconds West, 68.00 feet to a point, North 67 degrees 32 minutes 35 seconds West, 78.27 feet to a point, thence a line North 100 feet perpendicular to and parallel with the centerline of the Southbound lane of U.S. Highway Number 41-A, the next two (2) calls as follows:

South 78 degrees 06 minutes 37 seconds West, 100.12 feet to a point, South 09 degrees 09 minutes 42 seconds East, 447.20 feet to a point, South 42 degrees 42 minutes 21 seconds West, 1,116.65 feet to a point, South 42 degrees 57 minutes 41 seconds West, 82.14 feet to a point, South 72 degrees 51 minutes 48 seconds West, 73.66 feet to a point, North 88 degrees 56 minutes 00 seconds West, 68.00 feet to a point, North 67 degrees 32 minutes 35 seconds West, 78.27 feet to a point, thence a line North 100 feet perpendicular to and parallel with the centerline of the Southbound lane of U.S. Highway Number 41-A, the next two (2) calls as follows:

South 78 degrees 06 minutes 37 seconds West, 100.12 feet to a point, South 09 degrees 09 minutes 42 seconds East, 447.20 feet to a point, South 42 degrees 42 minutes 21 seconds West, 1,116.65 feet to a point, South 42 degrees 57 minutes 41 seconds West, 82.14 feet to a point, South 72 degrees 51 minutes 48 seconds West, 73.66 feet to a point, North 88 degrees 56 minutes 00 seconds West, 68.00 feet to a point, North 67 degrees 32 minutes 35 seconds West, 78.27 feet to a point, thence a line North 100 feet perpendicular to and parallel with the centerline of the Southbound lane of U.S. Highway Number 41-A, the next two (2) calls as follows:

South 78 degrees 06 minutes 37 seconds West, 100.12 feet to a point, South 09 degrees 09 minutes 42 seconds East, 447.20 feet to a point, South 42 degrees 42 minutes 21 seconds West, 1,116.65 feet to a point, South 42 degrees 57 minutes 41 seconds West, 82.14 feet to a point, South 72 degrees 51 minutes 48 seconds West, 73.66 feet to a point, North 88 degrees 56 minutes 00 seconds West, 68.00 feet to a point, North 67 degrees 32 minutes 35 seconds West, 78.27 feet to a point, thence a line North 100 feet perpendicular to and parallel with the centerline of the Southbound lane of U.S. Highway Number 41-A, the next two (2) calls as follows:

South 78 degrees 06 minutes 37 seconds West, 100.12 feet to a point, South 09 degrees 09 minutes 42 seconds East, 447.20 feet to a point, South 42 degrees 42 minutes 21 seconds West, 1,116.65 feet to a point, South 42 degrees 57 minutes 41 seconds West, 82.14 feet to a point, South 72 degrees 51 minutes 48 seconds West, 73.66 feet to a point, North 88 degrees 56 minutes 00 seconds West, 68.00 feet to a point, North 67 degrees 32 minutes 35 seconds West, 78.27 feet to a point, thence a line North 100 feet perpendicular to and parallel with the centerline of the Southbound lane of U.S. Highway Number 41-A, the next two (2) calls as follows:

OVERSIZE MAP INCLUDED WITH
SUBMISSION.

To research the map, contact the
Office of Secretary of State
or the County Clerk.