

City of Horse Cave

Randall Curry, Mayor
121 Woodlawn Avenue
PO Box 326
Horse Cave, Kentucky 42749

Phone: 270-786 2680 Fax: 270-786 2688
www.horsecaveky.com E-mail: horsecave@hotmail.com

CITY CLERK CERTIFICATION

I, the undersigned, being duly appointed, qualified and acting as the City Clerk of the City of Horse Cave, Kentucky, hereby certify that the foregoing Resolution No. 2016-01 is a true, correct and complete copy as duly and lawfully passed and adopted by the Horse Cave City Council at a duly convened business meeting of the Horse Cave City Council held on the 21st day of March, 2016 all as appears in the official records of said City.

WITNESS, my hand and Seal, this 21st day of March, 2016.

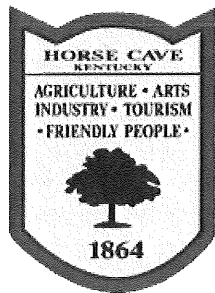
Elizabeth C. Matera
Elizabeth Matera, City Clerk

*Subscribed, sworn and personally
acknowledged to before me by Elizabeth
Matera on this 23rd day
of March, 2016.*

*Annelle L. Taylor, Notary Public
State of Kentucky at Large
My commission expires 4/23/19*

RECEIVED AND FILED
DATE June 15, 2016

ALISON LUNDERGAN GRIMES
SECRETARY OF STATE
COMMONWEALTH OF KENTUCKY
BY Hardie Williams



City of Horse Cave

Randall Curry, Mayor
121 Woodlawn Avenue
PO Box 326
Horse Cave, Kentucky 42749

Phone: 270-786 2680 Fax: 270-786 2688
www.horsecaveky.com E-mail: horsecave@hotmail.com

Resolution 2016-01

A RESOLUTION OF THE CITY COUNCIL OF THE CITY OF HORSE CAVE, KENTUCKY ADOPTING A MODERN AND ACCURATE LEGAL DESCRIPTION OF TERRITORY PREVIOUSLY ANNEXED BY ORDINANCE 2007-10.

WHEREAS, the City of Horse Cave has enacted numerous ordinances annexing property into the corporate limits of the City of Horse Cave; and

WHEREAS, the City wishes to provide a modern, accurate, easily identifiable legal description reflecting bearings and coordinates based upon the state plane coordinate system, including relevant GPS and GIS data, same having been certified by a professional land surveyor for each prior annexation; and

WHEREAS, the City wishes to comply with the requirements of Amended KRS 81A.470 effective July 12th, 2004; and

WHEREAS, the City does not intend to amend or replace its prior ordinance annexing but rather to interpret the defined boundaries of the territory previously annexed and adopt a modern and accurate legal description of territory previously annexed.

NOW THEREFORE, BE IT RESOLVED BY THE CITY COUNCIL OF THE CITY OF HORSE CAVE, KENTUCKY:

SECTION 1. That the City Council of the City of Horse Cave hereby adopts the following legal description and a plat attached hereto as prepared by Robert Neuhaus Licensed Professional Land Surveyor No. 3857 by new plat as an accurate depiction of the property previously annexed into the corporate city limits of the City of Horse Cave by Ordinance 2007-10 dated September 25, 2007, a copy of which is attached hereto and hereby adopts said new legal description and plat as the official legal description and plat as the official legal description and plat to be adopted by the City for all purposes when referencing this prior annexation.

SECTION 2. This new legal description as prepared by Robert Neuhaus a Licensed Professional Land Surveyor No. 3857 is attached labeled "Loves Travel Stops & Country Store, INC, Ordinance 2007-10 Annexation". This Plat is attached labeled as "Annexation Exhibit 1 & 2" as prepared by American Engineers, INC. dated ~~April~~ ^{MAY} 12, 2016.


Adopted by a vote of 6 in favor, 0 against, 0 abstentions this 21st day of March, 2016.


RANDALL CURRY, MAYOR

ATTESTED BY:


ELIZABETH MATERA, CITY CLERK

APPROVED AS TO FORM AND LEGALITY:


PAT ROSS, CITY ATTORNEY
Hensley and Ross
PO Box 350
Horse Cave, KY 42749
270-786-2155



COMMONWEALTH OF KENTUCKY
TRANSPORTATION CABINET
Frankfort, Kentucky 40622
www.transportation.ky.gov/

Matthew G. Bevin
Governor

Greg Thomas
Secretary

April 19, 2016

The Honorable Randall Curry
Mayor, City of Horse Cave
P.O. Box 326
Horse Cave, KY 42749

Dear Mayor Curry,

In response to an inquiry from the City of Horse Cave, the Kentucky Transportation Cabinet (KYTC) generally does not oppose nor concurs with the annexation issues of local communities. The inquiry involves the following routes:

- A portion of KY 218, KYTC Project No. 50-160-1, dated 1966 in Horse Cave, Kentucky
- KY 218 west to Interstate 65 and KY 335 that runs between Love's Truck Stop and KDU

The KYTC wishes to remain neutral regarding this matter with the understanding that the cabinet still controls all right of way along these routes.

By this letter, the KYTC has no opposition to the efforts of the City of Horse Cave to proceed with the annexation effort of the route listed above including the KYTC right of way. Should you have additional questions regarding this matter, please do not hesitate to contact this office.

Sincerely,

A handwritten signature in black ink, appearing to read "Patty B. Dunaway".

Patty B. Dunaway, P.E.
Chief District Engineer
District 4 - Elizabethtown





AMERICAN ENGINEERS, INC.

PROFESSIONAL ENGINEERING

65 Aberdeen Drive
Glasgow, Kentucky 42141
Office (270) 651-7220
Fax (270) 651-3246

LOVES TRAVEL STOPS & COUNTRY STORE, INC. ORDINANCE 2007-10 ANNEXATION

A certain parcel lying in Horse Cave-Hart County, Kentucky. Said Parcel being a portion of land owned by Loves Travel Stops & Country Store, INC. ~ Ordinance 2007-10 Annexation as recorded in "Deed Book 284 Page 335" and (March 5, 2010) in the office of Hart County Court Clerk. Said parcel is more particularly described as follows:

The basis of bearings referred to hereon were based on Grid North as it relates to the Kentucky State Plane Coordinate System. As observed via RTK based off of NGS COR Station #KYTC. December 31, 2012.

BEGINNING at point on the East right-of-way of Ky 335 and the North right-of-way of Ky. 218 KOA Avenue.

Thence leaving KY 335 with Ky 218 for the following two calls:

Thence N 49°19'39" W a distance of 292.84' to a point;

Thence N 40°25'40" W a distance of 93.36' to a point being on Ky 218 and US Interstate 65 "Northbound Ramp";

Thence leaving Ky 218 with Northbound Ramp for the four following calls:

Thence N 13°55'05" W a distance of 482.93' to a point;

Thence N 12°43'31" W a distance of 480.37' to a point;

Thence N 00°06'18" W a distance of 206.39' to a point;

Thence N 04°56'10" E a distance of 34.86' to a point, being on Northbound Ramp and US Interstate 65;

Thence leaving the Northbound Ramp with I-65 N 04°56'10" E a distance of 1178.82' to a point;

Thence leaving I-65 for the four calls:

Thence S 32°02'25" E a distance of 325.35' to a point;

Thence S 80°07'25" E a distance of 350.00' to a point;

Thence S 15°27'35" W a distance of 84.00' to a point;

Thence S 79°32'25" E a distance of 213.24' to a point on Ky 335;

Thence with KY 335 for the remaining calls:

Thence S 15°21'34" W a distance of 209.55' to a point;

Thence with a curve turning to the left with an arc length of 224.03', with a radius of 920.01', with a chord bearing of S 08°23'00" W, with a chord length of 223.48' to a point;

Thence S 01°24'27" W a distance of 185.52' to a point;

Thence S 01°24'27" W a distance of 54.82' to a point;

Thence S 00°04'57" W a distance of 444.51' to a point;



AMERICAN ENGINEERS, INC.

PROFESSIONAL ENGINEERING

65 Aberdeen Drive
Glasgow, Kentucky 42141
Office (270) 651-7220
Fax (270) 651-3246

Thence with a curve turning to the right with an arc length of 250.76', with a radius of 1405.00',
with a chord bearing of S 05°11'44" W, with a chord length of 250.43' to a point;
Thence S 10°18'31" W a distance of 267.49' to a point;
Thence with a curve turning to the left with an arc length of 101.27', with a radius of 1220.00',
with a chord bearing of S 07°55'50" W, with a chord length of 101.24' to a point;
Thence S 89°54'55" W a distance of 11.03' to a point;
Thence S 08°13'47" W a distance of 207.46' to a point;
Thence with a curve turning to the right with an arc length of 226.78', with a radius of 359.26',
with a chord bearing of S 17°59'55" W, with a chord length of 223.03' to a point;
Thence S 36°04'55" W a distance of 26.09' to the point of beginning containing 31.66 Acres
(1379282.64 square feet) per survey by American Engineers Inc. dated December 31, 2012.

RIGHT OF WAY OF HWY 218
FROM CURRENT CITY LIMITS TO HWY 335 AND CONTIGUOUS TO SAID TRAVEL STOP
ORDINANCE 2007-10 ANNEXATION

BEGINNING at the current City Limits of Horse Cave where it intersects the South Right of Way of Highway 251;

Thence with the current right of way of said Highway 251:

Thence N 24°10'20" W a distance of 285.89', to a point;
Thence N 18°27'42" W a distance of 301.50', to a point;
Thence N 24°10'20" W a distance of 2400.00', to a point;
Thence N 27°59'11" W a distance of 150.33', to a point;
Thence N 24°10'20" W a distance of 150.00', to a point;
Thence N 31°57'35" W a distance of 73.80', to a point;
Thence N 24°17'00" W a distance of 299.03', to a point;
Thence N 29°58'10" W a distance of 115.55', to a point;
Thence N 22°11'23" E a distance of 42.81', to a point;
Thence N 33°47'11" W a distance of 53.28', to a point;
Thence S 83°22'14" W a distance of 39.85', to a point;
Thence with a curve turning to the left with an arc length of 481.58', with a radius of 2145.45',
with a chord bearing of N 42°29'19" W, with a chord length of 480.57', to a point;
Thence N 38°55'01" W a distance of 98.47', to a point;
Thence N 54°43'14" W a distance of 198.03', to a point;
Thence N 53°52'20" W a distance of 1700.00', to a point;
Thence N 56°44'05" W a distance of 300.37', to a point;
Thence N 51°43'29" W a distance of 400.28', to a point;
Thence N 52°12'10" W a distance of 343.27', to a point;



AMERICAN ENGINEERS, INC.

65 Aberdeen Drive
Glasgow, Kentucky 42141
Office (270) 651-7220
Fax (270) 651-3246

PROFESSIONAL ENGINEERING

Thence N 62°43'23" W a distance of 259.98', to a point;
 Thence N 53°52'20" W a distance of 392.35', to a point;
 Thence N 36°07'40" E a distance of 201.69', to a point;
 Thence S 49°19'39" E a distance of 292.84', to a point;
 Thence N 36°04'55" E a distance of 26.09', to a point;
 Thence with a curve turning to the left with an arc length of 226.78', with a radius of 359.26',
 with a chord bearing of N 17°59'55" E, with a chord length of 223.03', to a point;
 Thence N 08°13'47" E a distance of 207.46', to a point;
 Thence N 89°54'55" E a distance of 11.03', to a point;
 Thence with a curve turning to the right with an arc length of 101.27', with a radius of 1220.00',
 with a chord bearing of N 07°55'50" E, with a chord length of 101.24' to a point;
 Thence N 10°18'31" E a distance of 267.49', to a point;
 Thence with a curve turning to the left with an arc length of 250.76', with a radius of 1405.00',
 with a chord bearing of N 05°11'44" E, with a chord length of 250.43', to a point;
 Thence N 00°04'57" E a distance of 444.51', to a point;
 Thence N 01°24'27" E a distance of 54.82', to a point;
 Thence N 01°24'27" E a distance of 185.52', to a point;
 Thence with a curve turning to the right with an arc length of 224.03', with a radius of 920.00',
 with a chord bearing of N 08°23'00" E, with a chord length of 223.48', to a point;
 Thence N 15°21'34" E a distance of 209.55', to a point;
 Thence S 74°38'26" E a distance of 40.00', to a point;
 Thence S 15°21'34" W a distance of 209.55', to a point;
 Thence with a curve turning to the left with an arc length of 214.29', with a radius of 880.00',
 with a chord bearing of S 08°23'00" W, with a chord length of 213.76', to a point;
 Thence S 01°24'27" W a distance of 185.52', to a point;
 Thence S 01°24'27" W a distance of 54.36', to a point;
 Thence S 00°04'57" W a distance of 444.05', to a point;
 Thence with a curve turning to the right with an arc length of 257.90', with a radius of 1445.00',
 with a chord bearing of S 05°11'44" W, with a chord length of 257.56', to a point;
 Thence S 10°18'31" W a distance of 267.49', to a point;
 Thence with a curve turning to the left with an arc length of 94.02', with a radius of 1328.00',
 with a chord bearing of S 08°08'52" W, with a chord length of 94.00 to a point;
 Thence S 07°46'51" E a distance of 215.75', to a point;
 Thence with a curve turning to the right with an arc length of 287.69', with a radius of 469.26',
 with a chord bearing of S 18°31'09" W, with a chord length of 283.20', to a point;
 Thence S 36°04'55" W a distance of 34.95', to a point;
 Thence S 49°18'52" E a distance of 248.09', to a point;
 Thence S 53°52'20" E a distance of 343.12', to a point;
 Thence S 57°41'11" E a distance of 300.67', to a point;
 Thence S 54°20'59" E a distance of 600.02', to a point;
 Thence S 53°52'20" E a distance of 200.00', to a point;
 Thence S 42°33'44" E a distance of 101.98', to a point;

Page 3 of 4

www.aei.cc

Glasgow, KY • Marietta, GA • Louisville, KY



AMERICAN ENGINEERS, INC.

PROFESSIONAL ENGINEERING

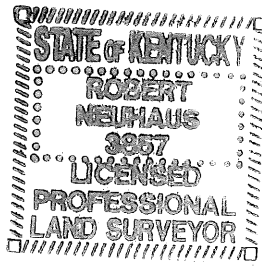
65 Aberdeen Drive
Glasgow, Kentucky 42141
Office (270) 651-7220
Fax (270) 651-3246

Thence S 53°52'20" E a distance of 700.00', to a point;
 Thence S 56°44'05" E a distance of 100.12', to a point;
 Thence S 53°52'20" E a distance of 400.00', to a point;
 Thence S 54°42'21" E a distance of 200.37', to a point;
 Thence S 58°53'00" E a distance of 105.10', to a point;
 Thence with a curve turning to the right with an arc length of 764.02', with a radius of 2107.83',
 with a chord bearing of S 39°01'23" E, with a chord length of 759.84', to a point;
 Thence S 24°17'06" E a distance of 301.04', to a point;
 Thence S 16°23'05" E a distance of 73.80', to a point;
 Thence S 24°10'20" E a distance of 1700.00', to a point;
 Thence S 32°49'29" E a distance of 232.65', to a point;
 Thence S 65°49'40" W a distance of 40.00', to a point;
 Thence S 25°51'25" E a distance of 170.07', to a point;
 Thence S 24°10'20" E a distance of 350.00', to a point;
 Thence S 20°44'19" E a distance of 250.45', to a point;
 Thence S 29°52'58" E a distance of 301.50', to a point;
 Thence S 24°10'20" E a distance of 314.00', to a point;
 Thence S 74°42'12" W a distance of 182.18', to the point of beginning containing 29.32 Acres
 (1277109.60 square feet) per survey by American Engineers Inc. dated December 31, 2012.

This description does not constitute a boundary survey. Said description is for annexing purposes and not for the transfer of real property.

Description Prepared by: Robert Neuhaus
Robert Neuhaus KY P.L.S. 3857

12/31/12
Date



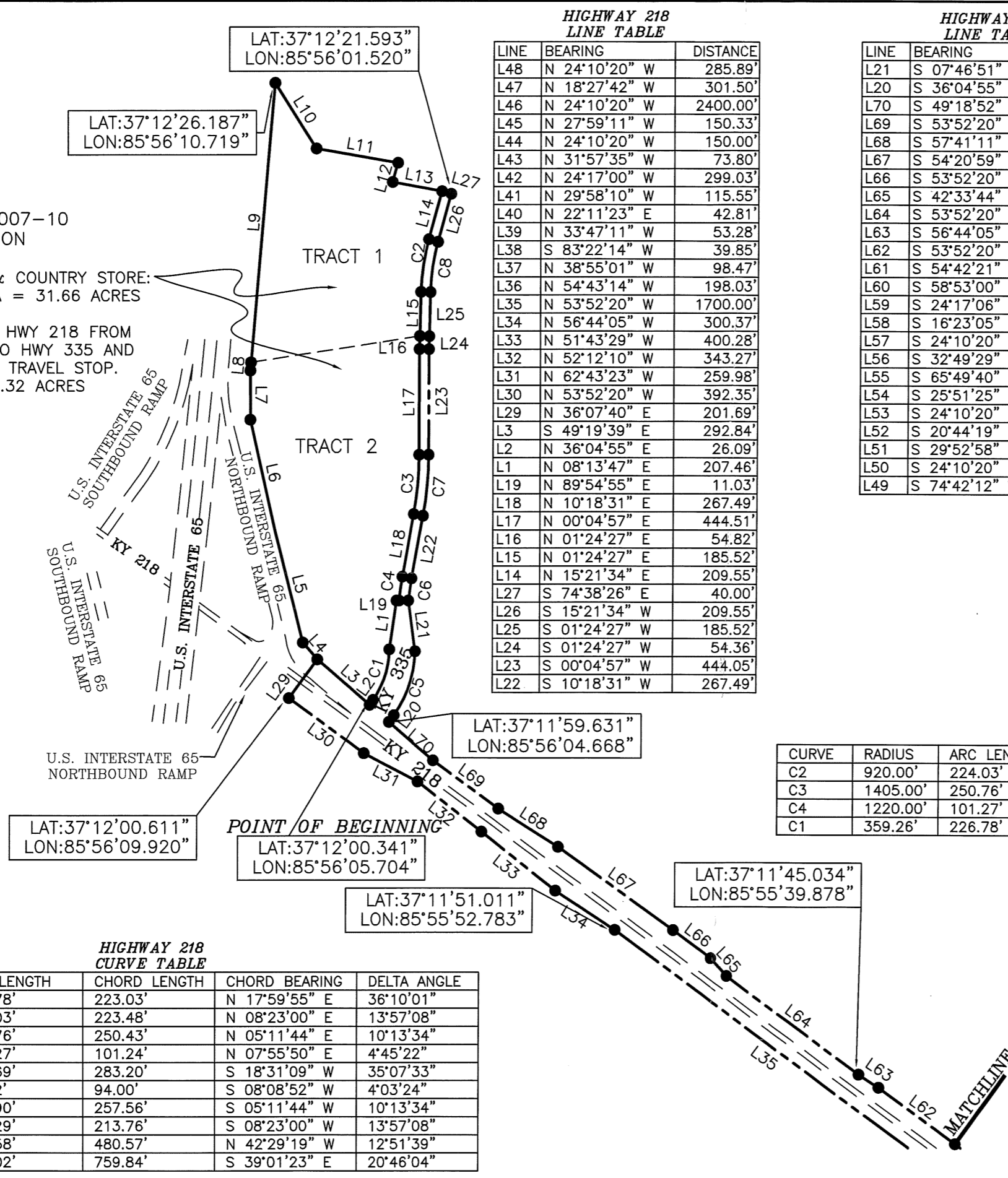
N GRID NORTH



**ORDINANCE 2007-10
ANNEXATION**

1. LOVES TRAVEL STOP & COUNTRY STORE:
DB 284 PG 052: AREA = 31.66 ACRES

2. RIGHT OF WAY OF HWY 218 FROM
CURRENT CITY LIMITS TO HWY 335 AND
CONTIGUOUS TO SAID TRAVEL STOP.
AREA = 29.32 ACRES



**HIGHWAY 218
LINE TABLE**

LINE	BEARING	DISTANCE
L48	N 24°10'20" W	285.89'
L47	N 18°27'42" W	301.50'
L46	N 24°10'20" W	2400.00'
L45	N 27°59'11" W	150.33'
L44	N 24°10'20" W	150.00'
L43	N 31°57'35" W	73.80'
L42	N 24°17'00" W	299.03'
L41	N 29°58'10" W	115.55'
L40	N 22°11'23" E	42.81'
L39	N 33°47'11" W	53.28'
L38	S 83°22'14" W	39.85'
L37	N 38°55'01" W	98.47'
L36	N 54°43'14" W	198.03'
L35	N 53°52'20" W	1700.00'
L34	N 56°44'05" W	300.37'
L33	N 51°43'29" W	400.28'
L32	N 52°12'10" W	343.27'
L31	N 62°43'23" W	259.98'
L30	N 53°52'20" W	392.35'
L29	N 36°07'40" E	201.69'
L3	S 49°19'39" E	292.84'
L2	N 36°04'55" E	26.09'
L1	N 08°13'47" E	207.46'
L19	N 89°54'55" E	11.03'
L18	N 10°18'31" E	267.49'
L17	N 00°04'57" E	444.51'
L16	N 01°24'27" E	54.82'
L15	N 01°24'27" E	185.52'
L14	N 15°21'34" E	209.55'
L27	S 74°38'26" E	40.00'
L26	S 15°21'34" W	209.55'
L25	S 01°24'27" W	185.52'
L24	S 01°24'27" W	54.36'
L23	S 00°04'57" W	444.05'
L22	S 10°18'31" W	267.49'

**HIGHWAY 218
LINE TABLE**

LINE	BEARING	DISTANCE
L21	S 07°46'51" E	215.75'
L20	S 36°04'55" W	34.95'
L70	S 49°18'52" E	248.09'
L69	S 53°52'20" E	343.12'
L68	S 57°41'11" E	300.67'
L67	S 54°20'59" E	600.02'
L66	S 53°52'20" E	200.00'
L65	S 42°33'44" E	101.98'
L64	S 53°52'20" E	700.00'
L63	S 56°44'05" E	100.12'
L62	S 53°52'20" E	400.00'
L61	S 54°42'21" E	200.37'
L60	S 58°53'00" E	105.10'
L59	S 24°17'06" E	301.04'
L58	S 16°23'05" E	73.80'
L57	S 24°10'20" E	1700.00'
L56	S 32°49'29" E	232.65'
L55	S 65°49'40" W	40.00'
L54	S 25°51'25" E	170.07'
L53	S 24°10'20" E	350.00'
L52	S 20°44'19" E	250.45'
L51	S 29°52'58" E	301.50'
L50	S 24°10'20" E	314.00'
L49	S 74°42'12" W	182.18'

**LOVES TRAVEL SHOP
LINE TABLE**

LINE	BEARING	DISTANCE
L3	N 49°19'39" W	292.84'
L4	N 40°25'40" W	93.36'
L5	N 13°55'05" W	482.93'
L6	N 12°43'31" W	480.37'
L7	N 00°06'18" W	206.39'
L8	N 04°56'10" E	34.86'
L9	N 04°56'10" E	1178.82'
L10	S 32°02'25" E	325.35'
L11	S 80°07'25" E	350.00'
L12	S 15°27'35" W	84.00'
L13	S 79°32'25" E	213.24'
L14	S 15°21'34" W	209.55'
L15	S 01°24'27" W	185.52'
L16	S 01°24'27" W	54.82'
L17	S 00°04'57" W	444.51'
L18	S 10°18'31" W	267.49'
L19	S 89°54'55" W	11.03'
L1	S 08°13'47" W	207.46'
L2	S 36°04'55" W	26.09'

**LOVES TRAVEL SHOP
CURVE TABLE**

CURVE	RADIUS	ARC LENGTH	CHORD LENGTH	CHORD BEARING	DELTA ANGLE
C2	920.00'	224.03'	223.48'	S 08°23'00" W	13°57'08"
C3	1405.00'	250.76'	250.43'	S 05°11'44" W	10°13'34"
C4	1220.00'	101.27'	101.24'	S 07°55'50" W	4°45'22"
C1	359.26'	226.78'	223.03'	S 17°59'55" W	36°10'01"

**HIGHWAY 218
CURVE TABLE**

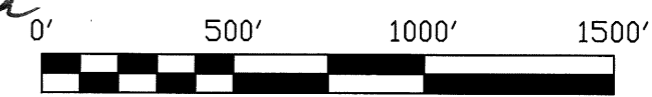
CURVE	RADIUS	ARC LENGTH	CHORD LENGTH	CHORD BEARING	DELTA ANGLE
C1	359.26'	226.78'	223.03'	N 17°59'55" E	36°10'01"
C2	920.00'	224.03'	223.48'	N 08°23'00" E	13°57'08"
C3	1405.00'	250.76'	250.43'	N 05°11'44" E	10°13'34"
C4	1220.00'	101.27'	101.24'	N 07°55'50" E	4°45'22"
C5	469.26'	287.69'	283.20'	S 18°31'09" W	35°07'33"
C6	1328.00'	94.02'	94.00'	S 08°08'52" W	4°03'24"
C7	1445.00'	257.90'	257.56'	S 05°11'44" W	10°13'34"
C8	880.00'	214.29'	213.76'	S 08°23'00" W	13°57'08"
C9	2145.45'	481.58'	480.57'	N 42°29'19" W	12°51'39"
C10	2107.83'	764.02'	759.84'	S 39°01'23" E	20°46'04"

CERTIFICATION

THIS IS TO CERTIFY, TO THE BEST OF MY KNOWLEDGE,
INFORMATION AND BELIEF, ALL INFORMATION SHOWN
HEREON IS TRUE AND ACCURATELY SHOWN.
THIS IS NOT A BOUNDARY SURVEY.

Robert Neuhaus
ROBERT NEUHAUS, PLS 3857
SIGNED:

5/12/16
DATE:



LEGEND

- -EXISTING POINT
- — — — — -EXISTING PAVEMENT
- - - - - -INTERIOR TRACT LINE
- — — — — -ANNEXATION LINE
- — — — — -EXISTING CITY LIMITS

LOVES TRAVEL STOPS &
COUNTRY STORES INC.
DEED BOOK 284 PAGE 52
HIGHWAY 218 RIGHT OF WAY
PROJECT: 50-160-1 DATED: 1966

ORDINANCE 2007 - 10
OCTOBER 08, 2007

AMERICAN ENGINEERS, INC.
1000 W. BROADWAY, SUITE 100
MEMPHIS, TN 38103
PH: 901-525-1100
FAX: 901-525-1101
www.aeinc.com

SCALE:
1"=500'
DATE:
04/12/16
DRAWN BY:
R. NEUHAUS

CHECKED BY:
N. FIRKINS

TJ12 PROJECTS/212-327 HORSE
CAVE-ANNEXATION SURVEY/DWG
FILES-LOVES TRAVEL 1 OF 2 DWG
**ANNEXATION
EXHIBIT
1 OF 2**

N GRID NORTH



LOVES TRAVEL SHOP
LINE TABLE

LINE	BEARING	DISTANCE
L3	N 49°19'39" W	292.84'
L4	N 40°25'40" W	93.36'
L5	N 13°55'05" W	482.93'
L6	N 12°43'31" W	480.37'
L7	N 00°06'18" W	206.39'
L8	N 04°56'10" E	34.86'
L9	N 04°56'10" E	1178.82'
L10	S 32°02'25" E	325.35'
L11	S 80°07'25" E	350.00'
L12	S 15°27'35" W	84.00'
L13	S 79°32'25" E	213.24'
L14	S 15°21'34" W	209.55'
L15	S 01°24'27" W	185.52'
L16	S 01°24'27" W	54.82'
L17	S 00°04'57" W	444.51'
L18	S 10°18'31" W	267.49'
L19	S 89°54'55" W	11.03'
L1	S 08°13'47" W	207.46'
L2	S 36°04'55" W	26.09'

LOVES TRAVEL SHOP
CURVE TABLE

CURVE	RADIUS	ARC LENGTH	CHORD LENGTH	CHORD BEARING	DELTA ANGLE
C2	920.00'	224.03'	223.48'	S 08°23'00" W	13°57'08"
C3	1405.00'	250.76'	250.43'	S 05°11'44" W	10°13'34"
C4	1220.00'	101.27'	101.24'	S 07°55'50" W	4°45'22"
C1	359.26'	226.78'	223.03'	S 17°59'55" W	36°10'01"

HIGHWAY 218
CURVE TABLE

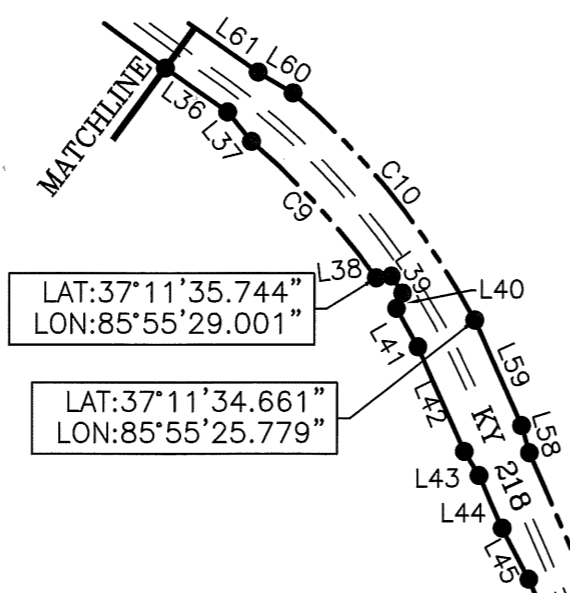
CURVE	RADIUS	ARC LENGTH	CHORD LENGTH	CHORD BEARING	DELTA ANGLE
C1	359.26'	226.78'	223.03'	N 17°59'55" E	36°10'01"
C2	920.00'	224.03'	223.48'	N 08°23'00" E	13°57'08"
C3	1405.00'	250.76'	250.43'	N 05°11'44" E	10°13'34"
C4	1220.00'	101.27'	101.24'	N 07°55'50" E	4°45'22"
C5	469.26'	287.69'	283.20'	S 18°31'09" W	35°07'33"
C6	1328.00'	94.02'	94.00'	S 08°08'52" W	4°03'24"
C7	1445.00'	257.90'	257.56'	S 05°11'44" W	10°13'34"
C8	880.00'	214.29'	213.76'	S 08°23'00" W	13°57'08"
C9	2145.45'	481.58'	480.57'	N 42°29'19" W	12°51'39"
C10	2107.83'	764.02'	759.84'	S 39°01'23" E	20°46'04"

HIGHWAY 218
LINE TABLE

LINE	BEARING	DISTANCE
L48	N 24°10'20" W	285.89'
L47	N 18°27'42" W	301.50'
L46	N 24°10'20" W	2400.00'
L45	N 27°59'11" W	150.33'
L44	N 24°10'20" W	150.00'
L43	N 31°57'35" W	73.80'
L42	N 24°17'00" W	299.03'
L41	N 29°58'10" W	115.55'
L40	N 22°11'23" E	42.81'
L39	N 33°47'11" W	53.28'
L38	S 83°22'14" W	39.85'
L37	N 38°55'01" W	98.47'
L36	N 54°43'14" W	198.03'
L35	N 53°52'20" W	1700.00'
L34	N 56°44'05" W	300.37'
L33	N 51°43'29" W	400.28'
L32	N 52°12'10" W	343.27'
L31	N 62°43'23" W	259.98'
L30	N 53°52'20" W	392.35'
L29	N 36°07'40" E	201.69'
L3	S 49°19'39" E	292.84'
L2	N 36°04'55" E	26.09'
L1	N 08°13'47" E	207.46'
L19	N 89°54'55" E	11.03'
L18	N 10°18'31" E	267.49'
L17	N 00°04'57" E	444.51'
L16	N 01°24'27" E	54.82'
L15	N 01°24'27" E	185.52'
L14	N 15°21'34" E	209.55'
L27	S 74°38'26" E	40.00'
L26	S 15°21'34" W	209.55'
L25	S 01°24'27" W	185.52'
L24	S 01°24'27" W	54.36'
L23	S 00°04'57" W	444.05'
L22	S 10°18'31" W	267.49'

HIGHWAY 218
LINE TABLE

LINE	BEARING	DISTANCE
L21	S 07°46'51" E	215.75'
L20	S 36°04'55" W	34.95'
L70	S 49°18'52" E	248.09'
L69	S 53°52'20" E	343.12'
L68	S 57°41'11" E	300.67'
L67	S 54°20'59" E	600.02'
L66	S 53°52'20" E	200.00'
L65	S 42°33'44" E	101.98'
L64	S 53°52'20" E	700.00'
L63	S 56°44'05" E	100.12'
L62	S 53°52'20" E	400.00'
L61	S 54°42'21" E	200.37'
L60	S 58°53'00" E	105.10'
L59	S 24°17'06" E	301.04'
L58	S 16°23'05" E	73.80'
L57	S 24°10'20" E	1700.00'
L56	S 32°49'29" E	232.65'
L55	S 65°49'40" W	40.00'
L54	S 25°51'25" E	170.07'
L53	S 24°10'20" E	350.00'
L52	S 20°44'19" E	250.45'
L51	S 29°52'58" E	301.50'
L50	S 24°10'20" E	314.00'
L49	S 74°42'12" W	182.18'



LAT:37°11'00.963"
LON:85°55'09.147"
POINT OF BEGINNING

LAT:37°11'04.169"
LON:85°54'54.598"

LAT:37°11'01.441"
LON:85°55'06.977"

EXISTING CITY LIMITS
DOWNLOADED FROM KY
GEOGRAPHY NETWORK

LEGEND

- - EXISTING POINT
- — — EXISTING PAVEMENT
- - - - - INTERIOR TRACT LINE
- — — ANNEXATION LINE
- — — EXISTING CITY LIMITS

LOVES TRAVEL STOPS &
COUNTRY STORES INC.
DEED BOOK 284 PAGE 52
HIGHWAY 218 RIGHT OF WAY
PROJECT: 50-160-1 DATED: 1966

ORDINANCE 2007 - 10
OCTOBER 08, 2007

AMERICAN ENGINEERS, INC.
1000 W. MAIN ST., SUITE 100
MADISON, IN 46702
(317) 251-1234
www.aei-engineers.com

SCALE:
1"=500'
DATE:
04/12/16
DRAWN BY:
R. NEUHAUS

CHECKED BY:
N. FIRKINS

T:\12 PROJECTS\12-327 HORSE
CAVE-ANNEXATIONSURVEY\DWG
FILES-LOVES TRAVEL 2 OF 2.DWG
**ANNEXATION
EXHIBIT
2 OF 2**

CERTIFICATION
THIS IS TO CERTIFY, TO THE BEST OF MY KNOWLEDGE,
INFORMATION AND BELIEF, ALL INFORMATION SHOWN
HEREON IS TRUE AND ACCURATELY SHOWN.
THIS IS NOT A BOUNDARY SURVEY.

Robert Neuhaus 5/12/16
ROBERT NEUHAUS, PLS 3857
SIGNED: _____ DATE: _____

