

**Description
Of
The City of Houston Acres**

Being the incorporated area of the City of Houston Acres, Kentucky as described in Judgment 21639, Ordinance 2, Ordinance 3, and Ordinance 13 located in the Jefferson County, Kentucky Clerks records and being more particularly described as follows:

Beginning at a point along the southerly margin of Taylorsville Road at or near the northwesterly most corner of Houston Acres Subdivision, Section 1 (Plat Book 11, Page 44), thence with the southerly margin of Taylorsville Road S 87°42'36" E 340.00' to a point;

Thence leaving said southerly margin of Taylorsville Road and continuing for the following 17 courses S 02°55'24" W 355.00', thence;

S 87°42'36" E 242.10' to a point, thence;

N 02°17'24" E 49.85' to a point, thence;

S 88°29'36" E 321.53' to a point, thence;

S 01°29'54" W 205.25' to a point, thence;

S 87°19'36" E 262.90' to a point, thence;

N 55°10'24" E 247.66' to a point, thence;

S 30°41'00" E 382.79' to a point, thence;

S 02°23'00" W 1572.25' to a point, thence;

S 02°08'00" W 710.00' to a point, thence,

N 88°15'00" W 573.16' to a point, thence;

S 01°00'49" W 316.16' to a point, thence;

N 88°07'02" W 694.64' to a point, thence,

N 05°02'53" E 1205' more or less to a point, thence;

N 26°16'51" W 603' more or less to a point, thence,

N 02°23'00" E 872' more or less to a point, thence,

N 02°55'24" E 678.42' to the Point of Beginning for this tract herein described.

The above description is based on record information. No field survey was completed to verify the courses and distances hereon.

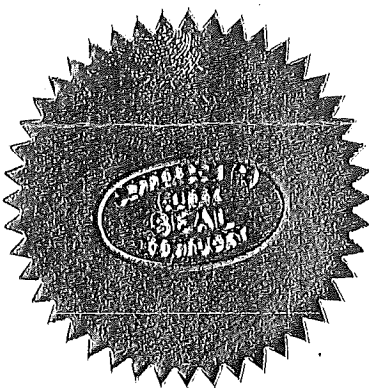
Board of Elections
Jefferson County, Kentucky
Certificate of Election

We, the undersigned, duly authorized to canvass the returns, do hereby Certify the General Election held in said County on November 6, 2007. The following vote was tabulated for the question:

Are you in favor of being stricken from the City of Houston Acres and becoming part of the unincorporated area of the county?"

<u>Yes</u>	<u>12</u>
<u>No</u>	<u>0</u>

Witness our hands, this the 26th day of November 2007, at Jefferson County, Kentucky



Bobbie Zolsclaw
Chairperson

Col. John E. Arley
Sheriff

James F. Steinfeld
Republican Member

Walter T. Peto, Jr.
Democratic Member

LAW OFFICES OF
HODGE & SINGLER
108 REPUBLIC PLAZA
200 SOUTH SEVENTH STREET
LOUISVILLE, KENTUCKY 40202
(502) 587-6901
FAX (502) 584-3091
E-MAIL: Hodgejg@bellsouth.net

JAMES G. HODGE, SR.

JOHN SINGLER

5/16/11

Office of the Secretary of the State
Kandie Adkinson, Administrative Supervisor
Suite 152, State Capitol
700 Capital Avenue
Frankfort, KY 40601-3493

Re: Supplemental Submittal, City of Houston Acres

Dear Kandie:

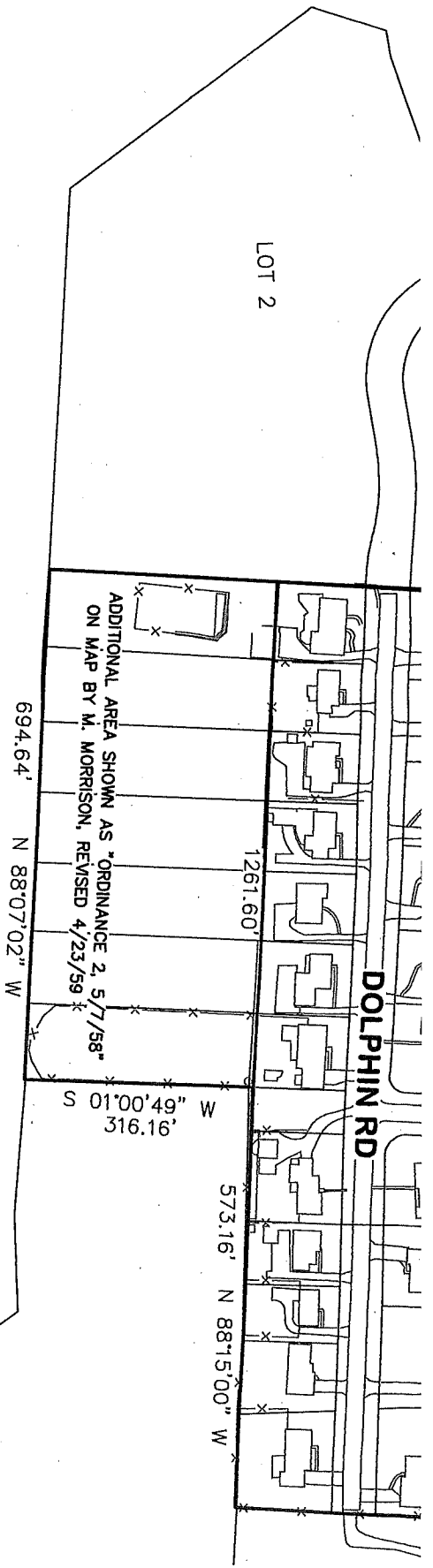
Thanks for your 1/4/11 response, I finally have the survey and engineering work you have asked to be done.

Please review and let me know if you need anything else. Thanks.

Sincerely



John Singler



GENERAL NOTES

THE RECORDED PLAT FOR HUNSNGER GARDENS (P.B. 50 PG. 61) DOES NOT SHOW STRUCTURES AND IS A SUBDIVISION PLAT DEDICATING ROAD RIGHT-OF-WAY AND EASEMENTS. THE STRUCTURES SHOWN ARE NEWLY CONSTRUCTED AND ARE DEPICTED HEREON BASED UPON THE CONDOMINIUM PLAT RECORDED IN CONDO. BOOK 110 PG. 57. THESE STRUCTURES HAVE NOT BEEN FIELD VERIFIED (UNITS 15-18, 24 & 25). THE OTHER UNITS SHOWN ARE DERIVED FROM THE DEVELOPMENT PLAN PREPARED BY GRESHAM, SMITH AND PARTNERS, DOCKET #8-61-03, AND HAVE NOT BEEN CONSTRUCTED.



milestone
 108 Daventry Lane, Suite. 300
 Louisville, Ky 40223
 t: (502) 327-7073
 f: (502) 327-7066
 design group, Inc.

**REDUCTION OF CITY BOUNDARY LIMIT
 CITY OF HOUSTON ACRES
 JEFFERSON COUNTY, KENTUCKY**

NOTE: CORPORATE LIMITS SHOWN ARE BASED ON RECORD INFORMATION AND DO NOT CONSTITUTE A SURVEY PERFORMED ON THE GROUND. MAPPING SHOWN IS M.S.D. / LOIC INFORMATION AND IS NOT FIELD VERIFIED.