

# City of Jeffersontown

10416 Watterson Trail • Jeffersontown, Kentucky 40299

Daniel H. Ruckriegel, Jr.

Mayor

Phone

502-267-8333

March 15, 1984

Secretary of State  
Capitol Bldg.  
Frankfort, Ky. 40601

RECEIVED  
MAR 19 1984

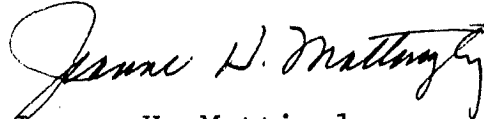
Commonwealth of Kentucky

Gentlemen:

Please find enclosed a copy of Ordinance No. 865 Series 1984, which is an ordinance annexing a tract of land lying Southeast of the existing City of Jeffersontown boundary owned by Otto Knop.

This is being sent for your information so that you may mark your records accordingly.

Sincerely,



Jeanne H. Mattingly  
City Clerk  
Encl.

*An Equal Opportunity Employer*

CITY OF JEFFERSONTOWN  
JEFFERSON COUNTY, KENTUCKY

ORDINANCE NO. 865, SERIES 1984

AN ORDINANCE RELATING TO:

ANNEXATION TO THE CITY OF JEFFERSONTOWN, KENTUCKY OF  
A TRACT OF LAND LYING SOUTHEAST OF THE EXISTING CITY  
BOUNDARY.

WHEREAS, Ordinance No. 850, Series 1983, has been enacted  
by the City of Jeffersontown, Kentucky, pursuant to KRS 81A420;  
and,

WHEREAS, more than sixty (60) days next following the en-  
actment of said Ordinance have passed; and,

WHEREAS, no valid petition has been received by the Mayor  
as set out in KRS 81A420; and,

WHEREAS, KRS 81A420 (3) provides for an annexation Ordinance;

NOW THEREFORE, BE IT ORDAINED BY THE CITY OF JEFFERSONTOWN,  
KENTUCKY:

SECTION I. The City of Jeffersontown, Kentucky has enacted  
Ordinance No. 850, Series 1983, proposing to  
annex to the City of Jeffersontown, Kentucky,  
and to extend the boundaries hereof to include  
a certain tract of land; and,

WHEREAS, more than sixty (60) days next following said enactment  
have elapsed, and,

WHEREAS, the Mayor of said Jeffersontown, Kentucky has received  
no valid petition from the property owners or qualified voters  
residing therein, the boundaries of the City of Jeffersontown, Ken-  
tucky are extended to include a certain tract of land designated as  
hereinafter set forth, said tract of land all lying within the  
County of Jefferson and adjacent to the City of Jeffersontown,  
Kentucky, and bounded and described as follows, to-wit:

Beginning at the Southeast property corner of a 22.37  
acre tract of land conveyed to Otto Knop as recorded  
in Deed Book 5368, Page 570, in the office of the  
Clerk of the County Court of Jefferson County, Kentucky,  
and being a common corner with the City of Jeffersontown,  
County of Jefferson, Kentucky, by Ordinance No. 819A,  
1983, thence South 75 degrees 06 minutes 40 seconds West,  
790.00 feet to a point thence North 14 degrees 05 minutes

CITY OF JEFFERSONTOWN  
JEFFERSON COUNTY, KENTUCKY

ORDINANCE NO. 865 SERIES 1984

40 seconds West, 1197.46 feet to a point; thence North 73 degrees 35 minutes 47 seconds East, passing a corner of the aforesaid Jeffersontown at 71.92 feet, in all 803.22 feet; thence with several lines common with City of Jeffersontown which bear as follows:

South 24 degrees 57 minutes 30 seconds East, 86.14 feet; South 15 degrees 09 minutes 16 seconds East, 161.45 feet; South 10 degrees 03 minutes 46 seconds East, 92.27 feet; and South 12 degrees 26 minutes 33 seconds East, 881.17 feet to the point of beginning and containing 22.37 acres.

SECTION II. THAT all ordinances or parts of ordinances conflicting with the provisions of this ordinance are hereby repealed, insofar as they affect this ordinance.

SECTION III. The Clerk of the Council is hereby directed to publish a copy of this ordinance immediately in a newspaper having the largest daily circulation in the City of Jeffersontown, Kentucky,

SECTION IV. This ordinance shall take effect and be in force immediately upon its passage and publication.

INTRODUCED AND READ AT A MEETING OF THE CITY COUNCIL OF THE CITY OF JEFFERSONTOWN, KENTUCKY ON THIS THE 27 DAY OF FEBRUARY, 1984.

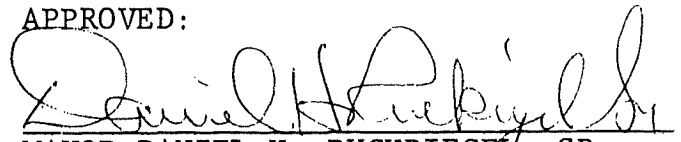
READ, PASSED AND APPROVED BY THE CITY COUNCIL OF THE CITY OF JEFFERSONTOWN, KENTUCKY, AT A MEETING HELD ON THE 5TH DAY OF MARCH, 1984.

VETOED:

\_\_\_\_\_  
MAYOR DANIEL H. RUCKRIEGEL, SR.

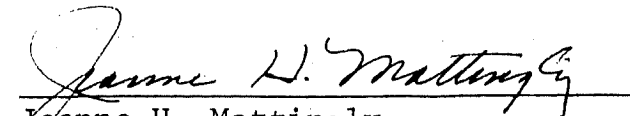
DATE: \_\_\_\_\_

APPROVED:

  
\_\_\_\_\_  
MAYOR DANIEL H. RUCKRIEGEL, SR.

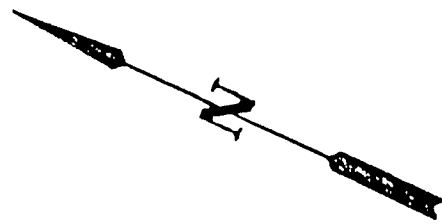
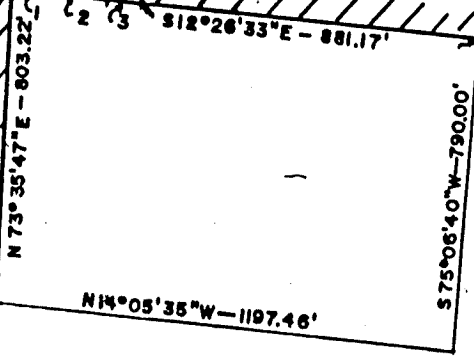
DATE: March 6, 1984

ATTEST:

  
\_\_\_\_\_  
Jeanne H. Mattingly  
Clerk of the Council

CITY OF JEFFERSONTOWN

1. S 24°57'30"E - 86.14'
2. S 15°09'16"E - 161.45'
3. S 10°03'46"E - 92.27'



E BLANKENBAKER RD.

TO REHL RD.

Ordinance No. 865, Series 1984

DATE: SCALE: BY:  
**RILEY, PARK, HAYDEN & ASSOC., INC.**  
SUITE 706 - WATTERSON CITY, WEST  
LOUISVILLE, KENTUCKY 40218