

RECEIVED AND FILED

DATE May 16, 2002

JOHN Y. BROWN III
SECRETARY OF STATE
COMMONWEALTH OF KENTUCKY

BY H. Adams

Council Chambers
City Hall
Kuttawa, Kentucky

Ordinance # 10-2-2-1

CITY OF KUTTAWA, KENTUCKY

ORDINANCE

PROPOSING TO

AN ORDINANCE ~~ANNEXING~~ TO THE CITY OF KUTTAWA, KENTUCKY, CERTAIN UNINCORPORATED TERRITORY ADJACENT TO AND ADJOINING THE WESTERN CORPORATE BOUNDARY OF THE CITY OF KUTTAWA, KENTUCKY, AND TO EXTEND THE BOUNDARY LINES AND CORPORATE LINE OF THE CITY OF KUTTAWA, KENTUCKY SO AS TO INCLUDE SAID TERRITORY WHICH IS MORE PARTICULARLY DESCRIBED HEREIN.

THE CITY COUNCIL OF THE CITY OF KUTTAWA DOES ORDAIN AS FOLLOWS:

Section I

Due to the lack of corporate territory in the City of Kuttawa, Kentucky, suitable for the purpose of providing industrial development sites, it is deemed desirable, and it is hereby proposed to annex to the City of Kuttawa, and to extend the corporate boundaries of the City of Kuttawa to include that certain territory, area or tract of land which is situated in Lyon County, Kentucky, and which is adjacent to and adjoining the western boundary of the City of Kuttawa, Kentucky, and is more particularly described as follows, to-wit:

corporate The point of beginning is an iron pin located in the center line of an old road in the City of Kuttawa, ~~Parish~~ *between* lands now or formerly owned by Hayes Parish and W. R. Fancher. Point of beginning bears South 29° 53' E. 58.35 feet from an iron pin set at the intersection of the south right-of-way line for West Clough Drive and W. R. Fancher property line; thence from the point of beginning and with Fancher's property line South 73° 15' W. 937.37 feet to an iron pipe in W. S. Yates' line (corner to Fancher).

thence with Yates' line South 35° 10' E. 308.32 feet to an iron pin, corner to W. S. Yates, W. R. Dycus and the City of Kuttawa ^{corporate line;} as shown with the City of Kuttawa ~~property~~ ^{corporate} line, 33' E. 462.85 feet; North 69° 00' E. 77.90 feet; South 82° 05' E. 419.25 feet; North 10° 10' E. 47.40 feet and North 29° 53' W. 449.90 feet to the point of beginning.

Section II

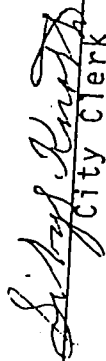
No daily or weekly newspaper being published in the City of Kuttawa, the City Clerk is hereby directed to have this Ordinance published in two consecutive weekly issues of the Herald Ledger, which paper is published weekly in Eddyville, Lyon County, Kentucky, and it being the only newspaper published in Lyon County, and having the largest circulation therein, and said City Clerk will also post copies of said Ordinance for at least ten days in four of the most public places in said City of Kuttawa.

Section III

This Ordinance shall take effect upon its passage and approval.

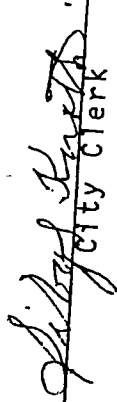

Mayor

ATTEST:


City Clerk

The foregoing Ordinance was introduced and read at

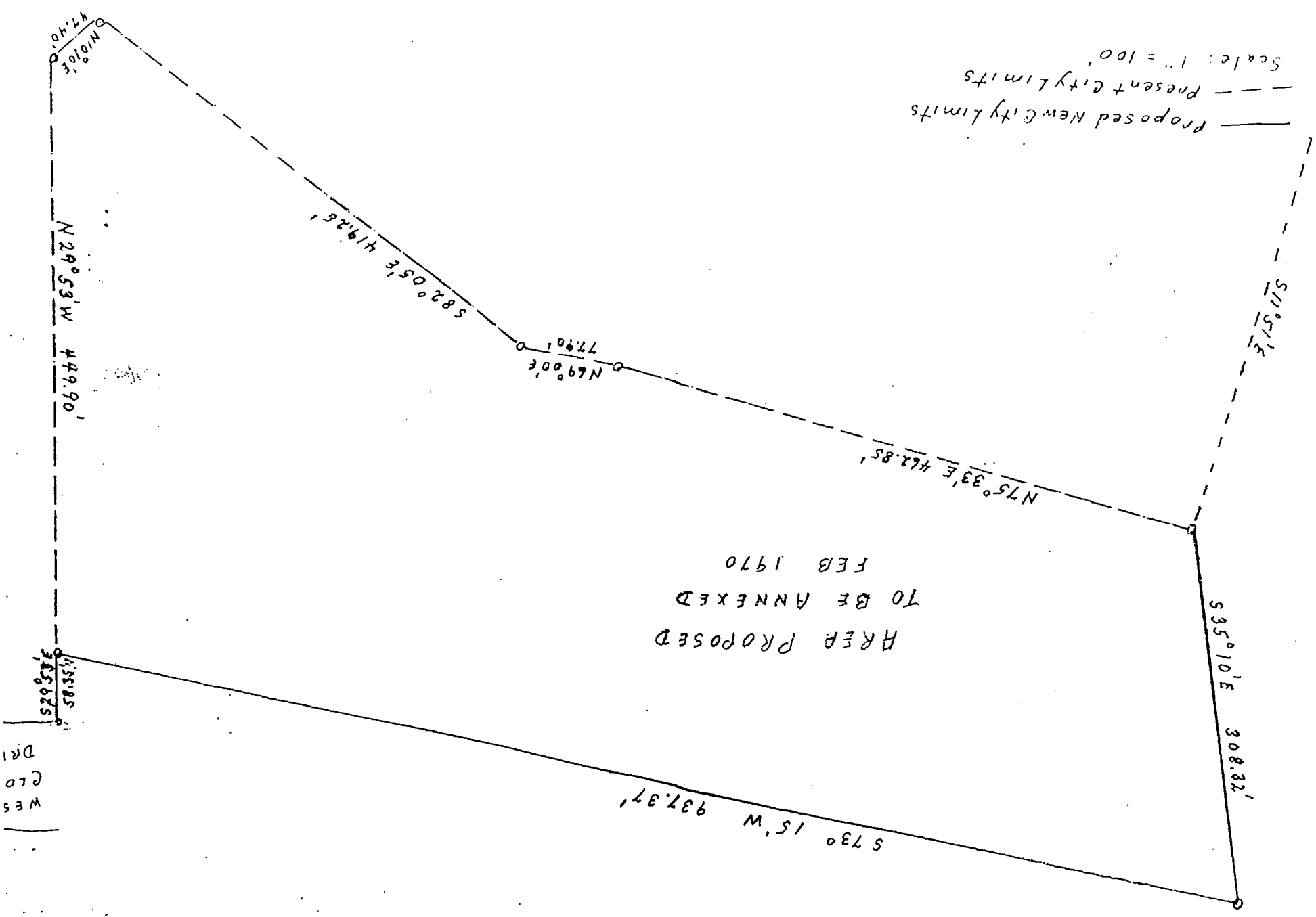
a regular meeting of the City Council of the City of Kuttawa, Kentucky, held Monday night, January 20, 1970, and was duly adopted by said City Council, approved and signed by the Mayor and attested by the City Clerk at a regular meeting of the City Council of the City of Kuttawa held Monday night, February 2, 1970.



City Clerk

Proposed New City Limits
 Present City Limits
 Scale: 1" = 100'

AREA PROPOSED
 TO BE ANNEXED
 FEB 1970



WES
 CLO
 DR1