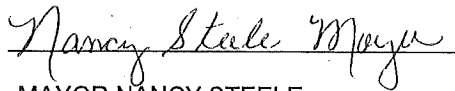


AN ORDINANCE PURSUANT TO THE PROVISIONS OF KRS 81A.410 AND KRS 81A.412 AND ALL OTHER APPLICABLE LAW ANNEXING THE PROPERTY PRESENTLY CONTIGUOUS TO THE EXISTING LaGRANGE CORPORATE LIMITS

BE IT ORDAINED BY THE CITY OF LaGRANGE, KENTUCKY, AS FOLLOWS:

The City of LaGrange, pursuant to KRS 81A.410 and 81A.412 and all other applicable law does hereby declare that the tracts of land described in the attached plat and descriptions adjoining and touching the city limits of the City of LaGrange are hereby annexed into the City of LaGrange. All property owners within the land to be annexed have given their written consent to this annexation. The land which is the subject of this annexation is more fully and particularly described in the attached exhibits (marked Exhibit "A") which include a legal description and plat for the 163.509 acres of property. The legal description and plat are incorporated herein as if fully set out. However, any existing roadways whether public or private within the area annexed shall remain the responsibility of the property owner to maintain. The City of LaGrange does not accept the maintenance of any roadway by reason of this annexation without a separate ordinance accepting the roadway for city maintenance.

WHEREFORE, pursuant to KRS 81A.410 and 81A.412, the tracts of property described in the attached plat and description is hereby annexed into the City of LaGrange. Henceforth, from the date of passage and publication of this ordinance according to law, the tracts of land in the attached exhibit incorporated herein by reference are hereby incorporated into the City of LaGrange and are now part of said City.


MAYOR NANCY STEELE

ATTEST:

Zella Smith City Clerk
ZELLA SMITH
City Clerk

FIRST READING: 5/3/99

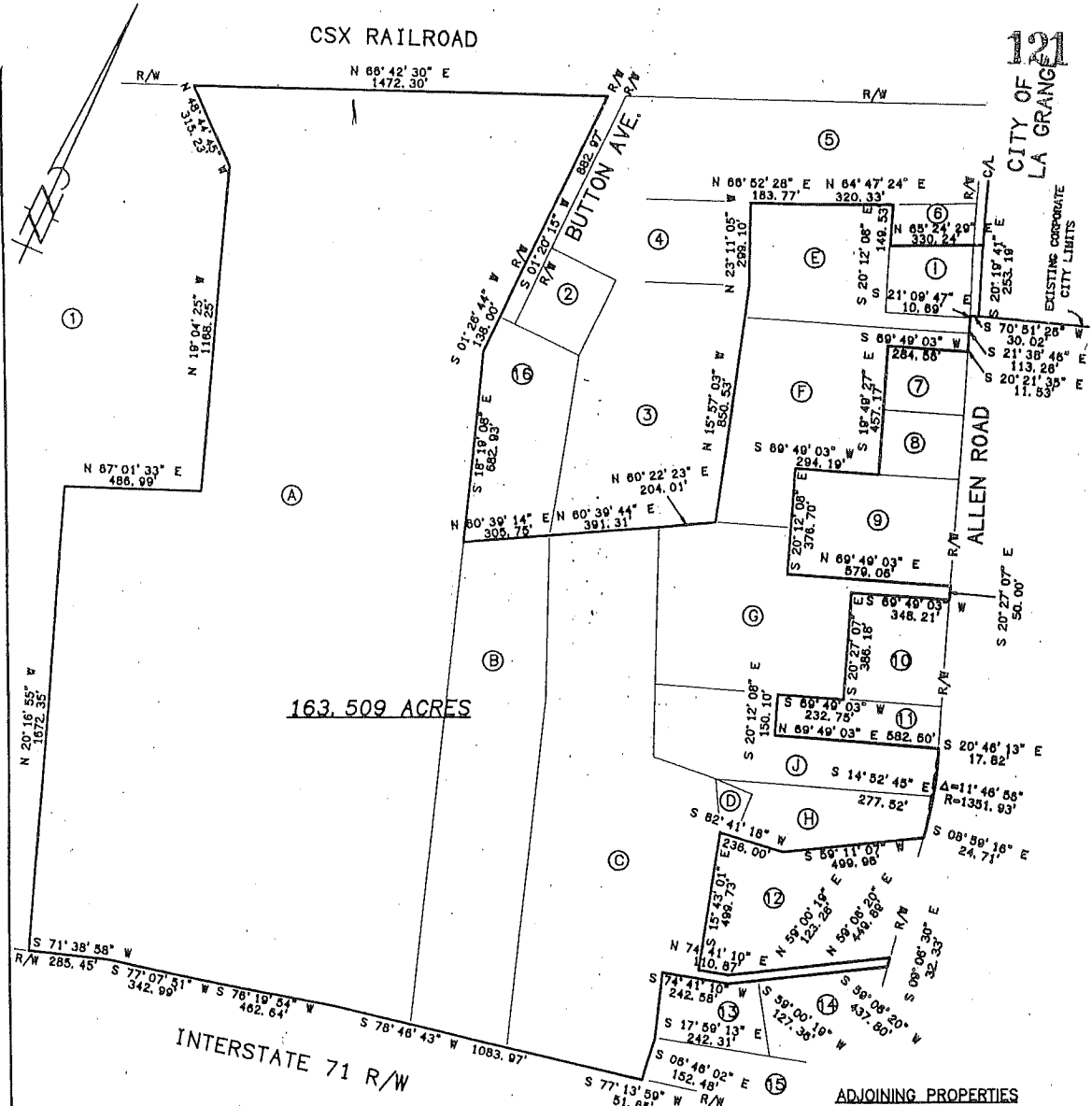
SECOND READING AND PASSAGE: 6/7/99

ANNEXATION DESCRIPTION
ALLEN ROAD AND BUTTON AVENUE PROPERTIES TO
THE CITY OF LAGRANGE

BEGINNING at a point in the centerline of Allen Road and being a southwest corner of the incorporated area of the City of LaGrange; thence crossing Allen Road South 70 degrees 51 minutes 26 seconds West 30.02 feet to a point in the west right of way line of Allen Road and being in the east line of the land of James L. Stone; thence with said line of Allen Road and said Stone, South 21 degrees 09 minutes 47 seconds East 10.69 feet to a corner of the land of Stoneway, LLC; thence continuing with said right of way and with the lines of Stoneway, LLC, and with the line of George and Doris Miles, South 21 degrees 38 minutes 46 seconds East 113.26 feet to an angle point; thence continuing with Miles and said right of way, South 20 degrees 21 minutes 35 seconds East 11.53 feet; thence leaving the west right of way of Allen Road and running with the lines of said Miles, South 69 degrees 49 minutes 03 seconds West 284.56 feet; South 19 degrees 49 minutes 27 seconds East 457.17 feet; and South 69 degrees 49 minutes 03 seconds West 294.19 feet; thence continuing with Miles and the lines of Paul and Charlotte Harrod, South 20 degrees 12 minutes 08 seconds East 376.70 feet to a corner with said Harrod; thence continuing with the lines of Harrod, North 69 degrees 49 minutes 03 seconds East 579.06 feet to a point in the west right of way of Allen Road; thence with said right of way and continuing with Harrod, South 20 degrees 27 minutes 07 seconds East 50.00 feet; thence leaving said right of way and continuing with Harrod, South 69 degrees 49 minutes 03 seconds West 348.21 feet; and South 20 degrees 27 minutes 07 seconds East 386.18 feet to a point in the north line of the land of Joseph A. Mula; thence with the lines of said Mula, South 69 degrees 49 minutes 03 seconds West 232.75 feet; South 20 degrees 12 minutes 08 seconds East 150.10 feet; and North 69 degrees 49 minutes 03 seconds East 582.50 feet to a point in the west right of way of Allen Road; thence with said right of way and continuing with the lines of Mula, South 20 degrees 46 minutes 13 seconds East 17.82 feet to a point of curvature; thence continuing with said right of way and with the lines of Mula and Brian P. Lenhart, with a curve to the right having a central angle of 11 degrees 46 minutes 56 seconds and a radius of 1,351.93 feet, the chord of which is South 14 degrees 52 minutes 45 seconds East 277.52 feet to a point of tangency; thence continuing with Lenhart and the west right of way of Allen Road, South 08 degrees 59 minutes 16 seconds East 24.71 feet; thence leaving the right of way and continuing with Lenhart, South 59 degrees 11 minutes 07 seconds West 499.96 feet; thence continuing with the lines of Lenhart and with C & W Excavating, Inc., South 82 degrees 41 minutes 18 seconds West 236.00 feet to a point in an east line of C & W Excavating, Inc.; thence with the lines of said C & W Excavating, Inc., South 15 degrees 43 minutes 01 seconds East 499.73 feet; North 74 degrees 41 minutes 10 seconds East 110.87 feet; North 59 degrees 00 minutes 19 seconds East 123.26 feet; and North 59 degrees 06 minutes 20 seconds East 449.89 feet to a point in the west right of way of Allen Road; thence with said right of way and continuing with C & W Excavating, Inc., South 09 degrees 06 minutes 30 seconds East 32.33 feet; thence leaving the right of way and continuing with the lines of C & W Excavating, Inc., South 59 degrees 06 minutes 20 seconds West 437.80 feet; South 59 degrees 00 minutes 19 seconds West 127.36 feet; South 74 degrees 41 minutes 10 seconds West 242.58 feet; South 17 degrees 59 minutes 13 seconds East 242.31 feet; and South 06 degrees 46 minutes 02 seconds East 152.48 feet a point in the northwest

CSX RAILROAD

121
CITY OF LA GRANGE
EXISTING CORPORATE CITY LIMITS



163.509 ACRES

INTERSTATE 71 R/W

ADJOINING PROPERTIES

- ① CARPENTER & OTTE
- ② WILLIAMS, WOODROW & LILLIE
- ③ H&H ENTERPRISES, INC.
- ④ WEISENHOFER, EARL
- ⑤ MEYER & LANHAM
- ⑥ CLORE, SAMUEL R. III
- ⑦ MILES, GEORGE & DORIS
- ⑧ BARKER, MICHAEL
- ⑨ SUPREME CORPORATION
- ⑩ WRIGHT, THEODORE & VERNA
- ⑪ BIERY, TOM
- ⑫ WILLIAMSON, GEORGE
- ⑬ CROUCH, RALPH & DORYTHA
- ⑭ HUBERTY, RANDY & SHELLEY
- ⑮ NAEGLER OUTDOOR ADVERTISING
- ⑯ ALLSTATE READY MIX, INC.

REFERENCES

- | | |
|----------------------------|-------------------|
| ① HMW GROUP, LLC | D.B. 520, PG. 187 |
| ② C&W EXCAVATING, INC. | D.B. 371, PG. 68 |
| ③ C&W EXCAVATING, INC. | D.B. 472, PG. 30 |
| ④ C&W EXCAVATING, INC. | D.B. 474, PG. 359 |
| ⑤ STONEWAY, LLC | D.B. 585, PG. 65 |
| ⑥ MILES, GEORGE & DORIS | D.B. 539, PG. 291 |
| ⑦ HARROD, PAUL & CHARLOTTE | D.B. 474, PG. 370 |
| ⑧ LENHART, BRIAN P. | D.B. 563, PG. 159 |
| ⑨ STONE, JAMES L. | D.B. 539, PG. 77 |
| ⑩ MULA, JOSEPH A. | D.B. 603, PG. 489 |

Plat prepared and compiled from surveys of record by

John A. Harrison
 John A. Harrison P.L.S. No. 1740



ANNEXATION PLAT FOR CITY OF LA GRANGE

Location: PROPERTIES LOCATED ALONG ALLEN ROAD AND BUTTON AVE.

Reference: SEE "REFERENCES" TABLE ABOVE

BY
HARRISON
 LAND SURVEYING, INC.
 306 W. JEFFERSON STREET - LA GRANGE, KY, 40031
 (502) 222-7487

APRIL 20, 1999

SCALE: 1"=500'

