

1840

CITY OF LAGRANGE

410 WEST JEFFERSON STREET LAGRANGE, KY 40031
(502) 222-1433 FAX (502) 222-5875 cityoflagrangeky.com

MAYOR
Elsie B. Carter

CLERK & TREASURER
Peggy W. Stephens

CITY ATTORNEY
Wade H. Helm

COUNCIL MEMBERS
James Beaumont
Joe Davenport
Linda L. Hall
Jean Knight
Debbie Pollard
Lucy R. Ricketts
Kevin R. Woosley
Glenn Yost

November 12, 2003

Office of the Secretary of State
700 Capital Avenue
Suite 152
State Capitol
Frankfort, KY 40601

ATTN: Kandie Adkinson

Dear Ms. Adkinson:

Per our conversation today, please find enclosed the documents relating to a recent annexation to our City. The documents attached to this letter are the documents I am certifying as true, correct and complete copies adopted by the City Council. The second set of documents contains a unified legal description prepared by our City Attorney, Wade Helm.

If you have any questions or need more information, please feel free to contact me at your earliest convenience.

Thank you for your assistance with this matter.

Sincerely,

Peggy Stephens

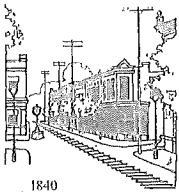
Peggy Stephens
City Clerk

RECEIVED AND FILED

DATE November 17, 2003

JOHN Y. BROWN III
SECRETARY OF STATE
COMMONWEALTH OF KENTUCKY

BY Kandie Adkinson



1840

CITY OF LAGRANGE

410 WEST JEFFERSON STREET LAGRANGE, KY 40031
(502) 222-1433 FAX (502) 222-5875 cityoflagrangeky.com

RECEIVED AND FILED
DATE November 17, 2003

JOHN Y. BROWN III
SECRETARY OF STATE
COMMONWEALTH OF KENTUCKY

BY Harlie Johnson

MAYOR
Elsie B. Carter

CLERK & TREASURER
Peggy W. Stephens

CITY ATTORNEY
Wade H. Helm

COUNCIL MEMBERS
James Beaumont
Joe Davenport
Linda L. Hall
Jean Knight
Debbie Pollard
Lucy R. Ricketts
Kevin R. Woosley
Glenn Yost

I certify I am the duly qualified City Clerk of the City of La Grange, Kentucky, and the foregoing eight pages of Ordinance No. 4-2003 is a true, correct and complete copy duly adopted by the City Council at a duly convened meeting held on July 7, 2003, as appears in the official records of said City.

WITNESS, my hand and seal, this 12th day of November, 2003.

Peggy L. Stephens
Peggy L. Stephens

ORDINANCE NO. 4-2003

JOHN Y. BROWN, JR.
SECRETARY OF THE
COMMONWEALTH OF KENTUCKY
BY *K. Ashmon*

AN ORDINANCE PURSUANT TO THE PROVISIONS OF KRS 81 A.410
AND KRS 81 A.412 AND ALL OTHER APPLICABLE LAW ANNEXING THE
PROPERTY PRESENTLY CONTIGUOUS TO THE EXISTING LAGRANGE
CORPORATE LIMITS

BE IT ORDAINED BY THE CITY OF LAGRANGE, KENTUCKY, AS
FOLLOWS:

The City of LaGrange, pursuant to KRS 81A.410 and KRS 81A.412 and all other applicable law does hereby declare that the tract of land described in the attached survey and description adjoining and touching the city limits of the City of LaGrange is hereby annexed into the City of LaGrange. All property owners within the land to be annexed have given their written consent to this annexation. The land, which is the subject of this annexation, is more fully and particularly described in the attached exhibits (marked Exhibit "A") which include a legal description and survey for the 214.25 acres of property. The legal description and survey are incorporated herein as if fully set out. However, any existing roadways whether public or private within the area annexed shall remain the responsibility of the property owner(s) to maintain. The City of LaGrange does not accept the maintenance of any roadway by reason of this annexation without a separate ordinance accepting the roadway for city maintenance.

WHEREFORE, pursuant to KRS 81A.410 and 81A.412, the tract of property described in the attached survey and description is hereby annexed into the City of LaGrange. Henceforth, from the date of passage and publication of this ordinance according to law, the tract of land in the attached exhibit incorporated herein by reference is hereby incorporated into the City of LaGrange and is now part of said city.

The council approves of this annexation and finds such annexation is desirable.

Elsie B. Carter, Mayor
Mayor Elsie B. Carter

ATTEST:

Peggy W. Stephens
Peggy W. Stephens City Clerk

First Reading and Action: 3 Approve 2 Disapprove
7/7/03 1 Abstention

ANNEXATION DESCRIPTIONS

Re: George Martin - Kentucky Highway 53, Oldham County, Kentucky

Tract A

Beginning at a point in the North right of way line of Kentucky Highway 53 and corner to the M. Walker Estate; thence South 41 degrees 44 minutes 10 seconds East 101.42 feet to a point; thence South 47 degrees 43 minutes 37 seconds West 10.00 feet to a point; thence South 41 degrees 37 minutes 34 seconds East 347.93 feet to a point; thence North 48 degrees 15 minutes 14 seconds East 180.13 feet to a point; thence South 42 degrees 26 minutes 47 seconds East 302.25 feet to a point; thence North 83 degrees 08 minutes 41 seconds East 369.87 feet; thence North 85 degrees 48 minutes 19 seconds East 1,637.12 feet to a point; thence North 22 degrees 05 minutes 01 seconds East 148.05 feet to a point; thence North 55 degrees 15 minutes 00 seconds West 1,205.66 feet to a point; thence North 62 degrees 17 minutes 21 seconds West 46.63 feet to a point; thence North 65 degrees 09 minutes 40 seconds West 66.90 feet to a point; thence North 70 degrees 52 minutes 32 seconds West 65.45 feet to a point; thence North 78 degrees 07 minutes 36 seconds West 65.01 feet to a point; thence North 81 degrees 41 minutes 58 seconds West 64.88 feet to a point; thence North 86 degrees 03 minutes 29 seconds West 64.97 feet to a point; thence North 87 degrees 27 minutes 58 seconds West 79.46 feet to a point; thence South 86 degrees 28 minutes 44 seconds West 702.55 feet to a point; thence South 21 degrees 34 minutes 25 seconds West 254.23 feet to a point; thence South 45 degrees 24 minutes 47 seconds West 192.27 feet to a point; thence South 45 degrees 24 minutes 47 seconds West 124.49 feet to a point; thence South 59 degrees 05 minutes 30 seconds West 277.95 feet to the point of beginning and containing 43.70 acres as shown on Plat of Annexation dated 29 May 2003.

Tract B

Beginning at a point in the West line of Quail Run Farms; thence North 22 degrees 05 minutes 01 seconds East 99.75 feet to a point; thence North 31 degrees 17 minutes 20 seconds East 200.54 feet to a point; thence North 46 degrees 51 minutes 37 seconds East 231.51 feet to a point; thence North 23 degrees 41 minutes 56 seconds East 347.23 feet to a point; thence North 10 degrees 18 minutes 33 seconds East 335.82 feet to a point; thence North 45 degrees 54 minutes 29 seconds West 160.65 feet to a point; thence North 79 degrees 16 minutes 32 seconds West 671.73 feet to a point; thence North 66 degrees 30 minutes 05 seconds West 83.22 feet to a point; thence South 34 degrees 45 minutes 00 seconds West 696.72 feet to a point; thence South 10 degrees 21 minutes 24 seconds West 65.88 feet to a point; thence South 34 degrees 45 minutes 00 seconds West 150.00 feet to a point; thence South 55 degrees 15 minutes 00 seconds East 1,017.38 feet to the point of beginning and containing 24.76 acres as shown on Plat of Annexation dated 29 May 2003.

Traet C

Beginning at a point in the West line of Quail Run Farms; thence North 10 degrees 18 minutes 33 seconds East 394.15 feet to a point; thence South 79 degrees 25 minutes 39 seconds West 164.69 feet to a point; thence North 61 degrees 21 minutes 54 seconds West 928.57 feet to a point; thence North 47 degrees 21 minutes 12 seconds West 516.62 ft. to a point; thence North 22 degrees 03 minutes 20 seconds West 666.93 feet to a point; thence South 34 degrees 51 minutes 08 seconds West 747.77 feet to a point; thence South 32 degrees 11 minutes 35 seconds West 104.00 feet to a point; thence South 45 degrees 31 minutes 25 seconds East 350.04 feet to a point; thence North 34 degrees 45 minutes 00 seconds East 14.49 feet to a point; thence South 55 degrees 15 minutes 00 seconds East 150.00 feet to a point; thence South 27 degrees 56 minutes 26 seconds East 67.53 feet to a point; thence South 55 degrees 15 minutes 00 seconds East 150.00 feet to a point; thence South 60 degrees 21 minutes 42 seconds East 518.28 feet to a point; thence South 66 degrees 30 minutes 05 seconds East 280.80 feet to a point; thence South 79 degrees 16 minutes 32 seconds East 671.73 feet to a point; thence South 45 degrees 54 minutes 29 seconds East 160.65 feet to the point of beginning and containing 24.99 acres as shown on Plat of Annexation dated 29 May 2003.

Tract D

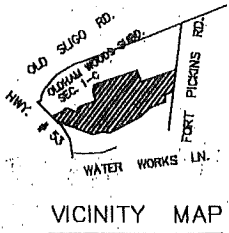
Beginning at a point in the South line of Turtle Creek Subdivision Sec. 1; thence North 52 degrees 40 minutes 14 seconds West 681.78 feet to a point; thence South 33 degrees 02 minutes 30 seconds West 85.96 feet to a point; thence with a curve to the right having radius of 600 feet South 36 degrees 41 minutes 13 seconds West 80.11 feet to a point; thence South 45 degrees 34 minutes 35 seconds West 115.17 feet to a point; thence South 58 degrees 42 minutes 33 seconds West 172.93 feet to a point; thence North 35 degrees 05 minutes 18 seconds West 61.41 feet to a point; thence North 47 degrees 22 minutes 50 seconds West 108.27 feet to a point; thence North 49 degrees 38 minutes 07 seconds West 89.20 feet to a point; thence North 55 degrees 22 minutes 58 seconds West 96.85 feet to a point; thence North 62 degrees 24 minutes 39 seconds West 100.81 feet to a point; thence North 69 degrees 27 minutes 52 seconds West 60.40 feet to a point; thence North 77 degrees 47 minutes 17 seconds West 41.15 feet to a point; thence South 53 degrees 02 minutes 32 seconds West 49.59 feet to a point; thence South 35 degrees 47 minutes 44 seconds West 100.00 feet to a point; thence North 54 degrees 12 minutes 16 seconds West 251.35 feet to a point; thence North 35 degrees 47 minutes 44 seconds East 26.46 feet to a point; thence North 54 degrees 12 minutes 16 seconds West 195.83 feet to a point; thence South 34 degrees 51 minutes 08 seconds West 1,159.81 feet to a point; thence South 22 degrees 03 minutes 20 seconds East 666.93 feet to a point; thence South 47 degrees 21 minutes 12 seconds East 516.62 feet to a point; thence South 61 degrees 21 minutes 54 seconds East 928.57 feet to a point; thence North 79 degrees 25 minutes 39 seconds East 374.04 ft. to a point; thence North 23 degrees 58 minutes 23 seconds East 397.89 feet to a point; thence North 15 degrees 25 minutes 45 seconds East 126.39 feet to a point; thence North 18 degrees 03 minutes 41 seconds East 176.70 feet to a point; thence North 07 degrees 28 minutes 41 seconds East 363.00 feet to a point; thence North 21 degrees 53 minutes 41 seconds East 115.00 feet to a point; thence North 31 degrees 48 minutes 41 seconds East 157.00 feet to a point; thence North 23 degrees 08 minutes 41 seconds East 211.00 feet to a point; thence North 24 degrees 59 minutes 15 seconds East 151.26 feet to a point; thence North 18 degrees 49 minutes 31 seconds East 126.76 feet to the point of beginning and containing 82.78 acres as shown on Plat of Annexation dated 29 May 2003.

Tract E

Beginning at a point in the south line of Oldham Woods Subdivision, Section 1-C, as recorded in Plat Book 5, Page 20; thence South 87 degrees 27 minutes 58 seconds East 79.46 feet to a point; thence South 86 degrees 03 minutes 29 seconds East 64.97 feet to a point; thence South 81 degrees 41 minutes 58 seconds East 64.88 feet to a point; thence South 78 degrees 07 minutes 36 seconds East 65.01 feet to a point; thence South 70 degrees 52 minutes 32 seconds East 65.45 feet to a point; thence South 65 degrees 09 minutes 40 seconds East 66.90 feet to a point; thence South 62 degrees 17 minutes 21 seconds East 46.63 feet to a point; thence South 55 degrees 15 minutes 00 seconds East 188.28 feet to a point; thence North 34 degrees 45 minutes 00 seconds East 150.00 feet to a point; thence North 10 degrees 21 minutes 24 seconds East 65.88 feet to a point; thence North 34 degrees 45 minutes 00 seconds East 696.72 feet to a point; thence North 66 degrees 30 minutes 05 seconds West 197.58 feet to a point; thence North 60 degrees 21 minutes 42 seconds West 518.28 feet to a point; thence South 34 degrees 45 minutes 00 seconds West 735.00 feet to a point; thence South 03 degrees 31 minutes 17 seconds East 69.75 feet to a point; thence South 37 degrees 13 minutes 18 seconds West 79.19 feet to a point; thence South 03 degrees 31 minutes 17 seconds East 150.00 feet to the point of beginning and containing 14.8 acres as shown on plat of annexation dated 29 May 2003.

Turtle Creek Subdivision, Sec. 1

Beginning at a point in the South line of Turtle Creek Subdivision Sec. 1; thence North 52 degrees 40 minutes 14 seconds West 681.78 feet to a point; thence South 33 degrees 02 minutes 30 seconds West 85.96 feet to a point; thence with a curve to the right having a radius of 600 feet, the chord of which is South 36 degrees 41 minutes 13 seconds West 80.11 feet, to a point; thence South 45 degrees 34 minutes 35 seconds West 115.17 feet to a point; thence South 58 degrees 42 minutes 33 seconds West 172.93 feet to a point; thence North 35 degrees 05 minutes 18 seconds West 61.41 ft. to a point; thence North 47 degrees 22 minutes 50 seconds West 108.27 feet to a point; thence North 49 degrees 38 minutes 07 seconds West 89.20 feet to a point; thence North 55 degrees 22 minutes 58 seconds West 96.85 feet to a point; thence North 62 degrees 24 minutes 39 seconds West 100.81 feet to a point; thence North 69 degrees 27 minutes 52 seconds West 60.40 feet to a point; thence North 77 degrees 47 minutes 17 seconds West 41.15 feet to a point; thence South 53 degrees 02 minutes 32 seconds West 49.59 feet to a point; thence South 35 degrees 47 minutes 44 seconds West 100.00 feet to a point; thence North 54 degrees 12 minutes 16 seconds West 251.35 feet to a point; thence North 35 degrees 47 minutes 44 seconds East 26.46 feet to a point; thence North 54 degrees 12 minutes 16 seconds West 195.83 feet to a point; thence North 34 degrees 51 minutes 08 seconds East 908.07 feet to a point; thence South 60 degrees 13 minutes 20 seconds East 346.80 feet to a point; thence North 35 degrees 24 minutes 37 seconds East 639.09 feet to a point; thence South 36 degrees 09 minutes 18 seconds East 1,043.04 ft. to a point; thence South 38 degrees 30 minutes 05 seconds West 81.84 feet to a point; thence South 20 degrees 12 minutes 00 seconds West 162.56 feet to a point; thence South 51 degrees 18 minutes 00 seconds East 213.09 feet to a point; thence South 12 degrees 22 minutes 25 seconds West 162.35 ft. to a point; thence South 11 degrees 06 minutes 21 seconds West 318.23 feet to a point; thence South 18 degrees 49 minutes 31 seconds West 23.97 feet to the point of beginning and containing 38.02 acres as shown on Plat of Annexation dated 29 May 2003.



THIS PLAT PREPARED FROM BOUNDARY BY
L.D. & D. INC.
R.J. Roth 2 July 03
R.J. ROTH P.L.S. # 2475 DATE:



MATCH LINE AA

ZONING CO-1

ZONING R-2

EX. LAGRANGE CITY LIMITS

B.F. & ERIC TAYLOR
D.B. 482, PG. 238

S 34°51'08"W 2815.66'
747.77'

OLDHAM WOODS SUBD. SEC. 1-C
P.B. 5, PG. 20

EX. HICKORY SWITCH RD. 60' R/W
OLDHAM WOODS SUBD. SEC. 1-A
P.B. 4, PG. 59

J.L. & C.A. PFISTER
D.B. 178, PG. 248

KY. HWY # 53

J.E. & L.A. PFISTER
D.B. 100, PG. 36

L & R. GIBBONS
D.B. 304, PG. 354

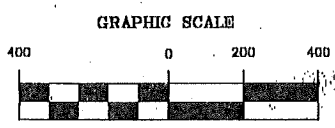
J.W. H. & D.L. HALL
D.B. 451, PG. 248

GARY B. & SUEAN G. HACK
D.B. 316, PG. 072

W. I. & D. B. HORNUNG
D.B. 536, PG. 122

G. M. II & S. M. BUTLER
D.B. 423, PG. 078

JAMES & MARY ELLEN KINSEY
1800 FOXBORO CT.



(IN FEET)
1 inch = 400 ft.

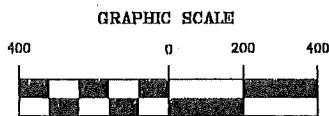
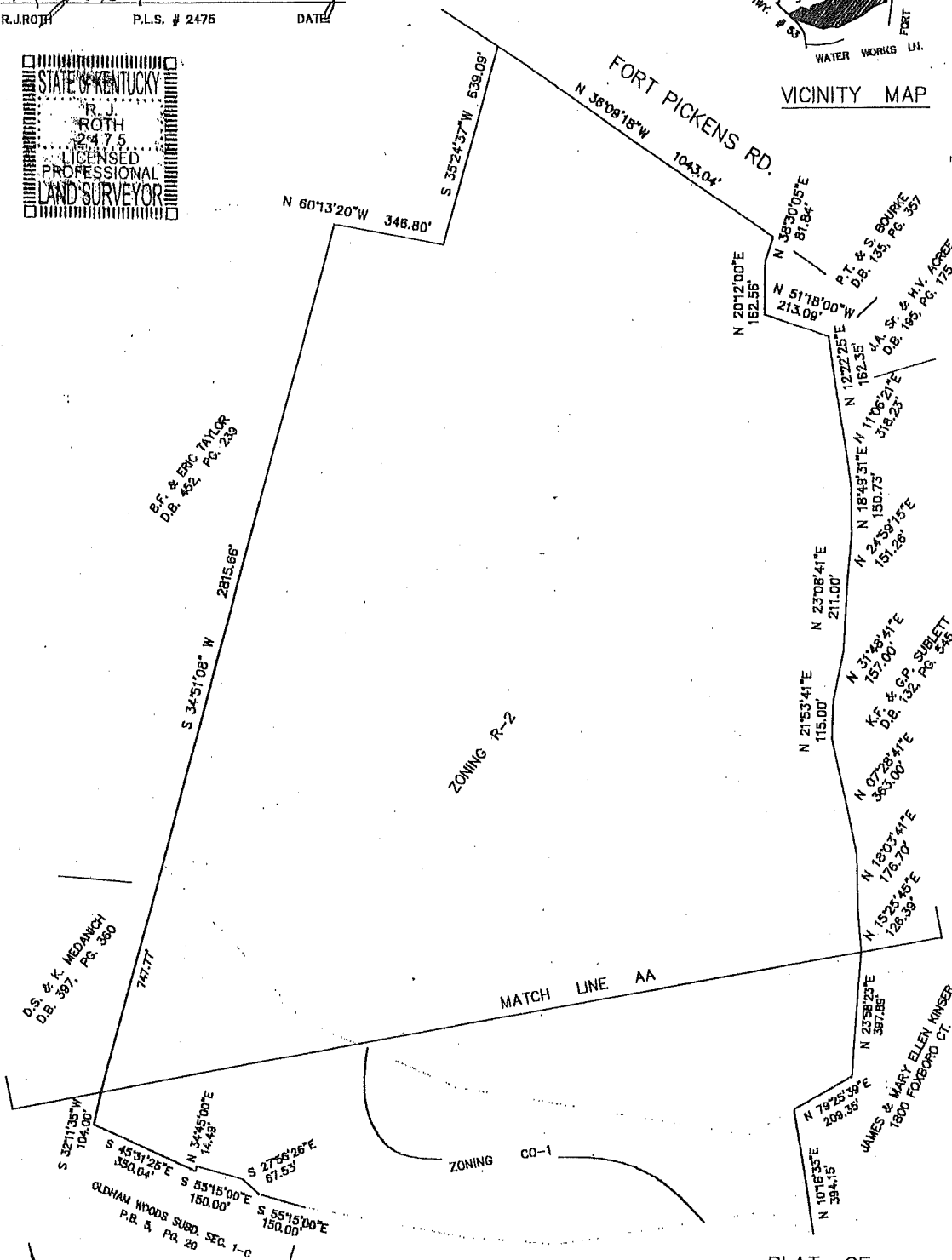
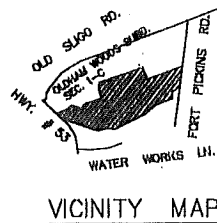
PLAT OF
ANNEXATION
FOR
LaGRANGE, KY
OF
GEORGE MARTIN
PROPERTY 229ac.+/-

DATE: JULY 2003

SHEET 1 OF 2

THIS PLAT PREPARED FROM BOUNDARY BY
L.D. & D., INC.

R.J. Roth 2 July 03
R.J. ROTH P.L.S. # 2475 DATE



(IN FEET)
1 inch = 400 ft.

PLAT OF
ANNEXATION
FOR
LaGRANGE, KY
OF
GEORGE MARTIN
PROPERTY 229ac.+/-

DATE: JULY 2003

SHEET 2 OF 2

DATE November 17, 2003

ORDINANCE NO. 4-2003

AN ORDINANCE PURSUANT TO THE PROVISIONS OF KRS 81 A.410 AND KRS 81 A.412 AND ALL OTHER APPLICABLE LAW ANNEXING
THE PROPERTY PRESENTLY CONTIGUOUS TO THE EXISTING LAGRANGE
CORPORATE LIMITS

JOHN Y. BROWN JR.
SECRETARY OF COUNCIL

K. A. Adams

BE IT ORDAINED BY THE CITY OF LAGRANGE, KENTUCKY, AS
FOLLOWS:

The City of LaGrange, pursuant to KRS 81A.410 and KRS 81A.412 and all other applicable law does hereby declare that the tract of land described in the attached survey and description adjoining and touching the city limits of the City of LaGrange is hereby annexed into the City of LaGrange. All property owners within the land to be annexed have given their written consent to this annexation. The land, which is the subject of this annexation, is more fully and particularly described in the attached exhibits (marked Exhibit "A") which include a legal description and survey for the 229 acres of property. The legal description and survey are incorporated herein as if fully set out. However, any existing roadways whether public or private within the area annexed shall remain the responsibility of the property owner(s) to maintain. The City of LaGrange does not accept the maintenance of any roadway by reason of this annexation without a separate ordinance accepting the roadway for city maintenance.

WHEREFORE, pursuant to KRS 81A.410 and 81A.412, the tract of property described in the attached survey and description is hereby annexed into the City of LaGrange. Henceforth, from the date of passage and publication of this ordinance according to law, the tract of land in the attached exhibit incorporated herein by reference is hereby incorporated into the City of LaGrange and is now part of said city.

The council approves of this annexation and finds such annexation is desirable.

This 7th day of July, 2003.


MAYOR ELSIE B. CARTER

ATTEST:

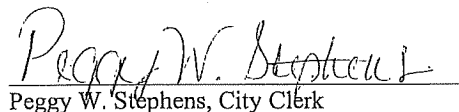

Peggy W. Stephens, City Clerk

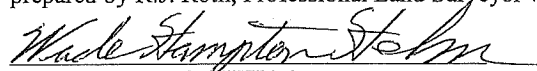
EXHIBIT "A" – ANNEXATION PROPERTY DESCRIPTION

Re: George Martin-Ky. Hwy. #53 Oldham County, Ky.

Beginning at a point in the North right of way of Ky. Hwy. #53 and corner to J.L. & C.A. Pfister; thence with said right of way South 41 degrees 44 minutes 10 seconds East 101.42 feet to a point; thence South 47 degrees 43 minutes 37 seconds West 10.00 feet to a point; thence South 41 degrees 37 minutes 34 seconds East 347.93 feet to a point; thence North 48 degrees 15 minutes 14 seconds East 180.13 feet to a point; thence South 42 degrees 26 minutes 47 seconds East 302.25 feet to a point in the L. & R. Gibbons line and being the North line of the City of LaGrange; thence North 83 degrees 08 minutes 41 seconds East 369.87 feet to a point; thence North 85 degrees 48 minutes 19 seconds East 1637.12 feet to a point in the West line of Quail Run subdivision; thence North 22 degrees 05 minutes 01 seconds East 247.80 feet to a point; thence North 31 degrees 17 minutes 20 seconds East 200.54 feet to a point; thence North 46 degrees 51 minutes 37 seconds East 231.51 feet to a point; thence North 23 degrees 41 minutes 56 seconds East 347.23 feet to a point; thence North 10 degrees 18 minutes 33 seconds East 729.97 feet to a point; thence North 79 degrees 25 minutes 39 seconds East 209.53 feet; thence North 23 degrees 58 minutes 23 seconds East 397.89 feet to a point; thence North 15 degrees 25 minutes 45 seconds East 126.39 feet to a point; thence 18 degrees 03 minutes 41 seconds East 176.70 feet to a point; thence North 07 degrees 28 minutes 41 seconds East 363.00 feet to a point; thence North 21 degrees 53 minutes 41 seconds East 115.00 feet to a point; thence North 31 degrees 48 minutes 41 seconds East 157.00 feet to a point; thence North 23 degrees 08 minutes 41 seconds East 211.00 feet to a point; thence North 24 degrees 59 minutes 15 seconds East 151.26 feet to a point; thence North 18 degrees 49 minutes 31 seconds East 150.73 feet to a point in the East line of Turtle Creek Subdivision, Section One (1); thence North 11 degrees 06 minutes 21 seconds East 318.23 feet to a point; thence North 12 degrees 22 minutes 25 seconds East 162.35 feet to a point; thence North 51 degrees 18 minutes 00 seconds West 213.09 feet to a point; thence North 20 degrees 12 minutes 00 seconds East 162.56 feet to a point; thence North 38 degrees 30 minutes 05 seconds East 81.84 feet to a point in the South line of Fort Pickens Road; thence with said South line North 36 degrees 09 minutes 18 seconds West 1043.04 feet to a point; thence South 35 degrees 24 minutes 37 seconds West 639.09 feet to a point; thence North 60 degrees 13 minutes 20 seconds West 346.80 feet to a point in the South line of B.F. & Eric Taylor; thence with aforesaid Taylor line South 34 degrees 51 minutes 08 seconds West 2815.66 feet to a point; thence South 32 degrees 11 minutes 35 seconds West 104.00 feet to a point in the North line of Oldham Woods Subdivision, Section 1-B, Plat Book 5 Page 36; thence with aforesaid North line South 45 degrees 31 minutes 25 seconds East 350.04 feet to a point; thence North 34 degrees 45 minutes 00 seconds East 14.49 feet to a point; thence South 55 degrees 15 minutes 00 seconds East 150.00 feet to a point; thence South 27 degrees 56 minutes 26 seconds East 67.53 feet to a point; thence South 55 degrees 15 minutes 00 seconds East 150.00 feet to a point in the

East line of Oldham Woods Section 1-C, Plat Book 5 Page 20; thence with aforesaid East line South 34 degrees 45 minutes 00 seconds West 735.00 feet to a point; thence South 03 degrees 31 minutes 17 seconds East 69.75 feet to a point; thence South 37 degrees 13 minutes 18 seconds West 79.19 feet to a point; thence South 03 degrees 31 minutes 17 seconds East 150.00 feet to a point in the South line of Oldham Woods Subdivision, Section 1-A, Plat Book 4 Page 59; thence with said South line South 86 degrees 28 minutes 44 seconds West 702.55 feet to a point; thence South 21 degrees 34 minutes 25 seconds West 254.23 feet to a point; thence South 45 degrees 24 minutes 47 seconds West 192.27 feet to a point; thence South 45 degrees 24 minutes 47 seconds West 124.49 feet to a point; thence South 59 degrees 05 minutes 30 seconds West 277.95 feet to the POINT of BEGINNING and containing 229 +/- acres as shown on plat of annexation dated 2 July 2003 prepared by R.J. Roth, Professional Land Surveyor from Boundary by L.D. & D., Inc.

It is hereby certified that the above Unified Legal Description was prepared by Wade Hampton Helm, City Attorney and that said Unified Legal Description encompasses all the duly advertised Tracts A, B, C, D, E and Turtle Creek Subdivision Section One and that said description was prepared pursuant to Kentucky Revised Statutes from the Plat prepared by R.J. Roth, Professional Land Surveyor which is attached hereto.

A handwritten signature in cursive script, reading "Wade Hampton Helm", written in dark ink.

WADE HAMPTON HELM
LaGrange City Attorney

SHEET 1 OF 2

THIS PLAT PREPARED FROM BOUNDARY BY
L.D. & D., INC.

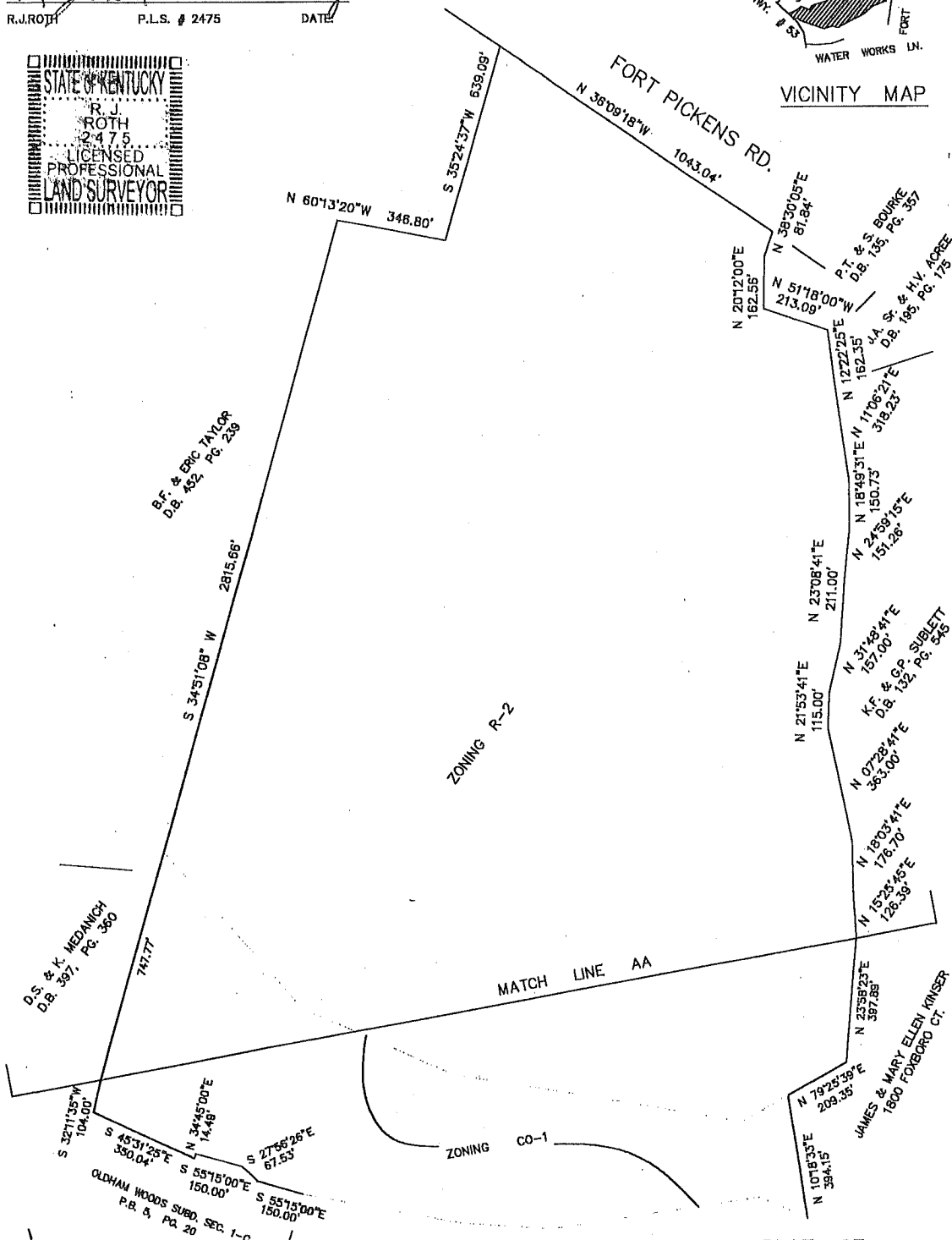
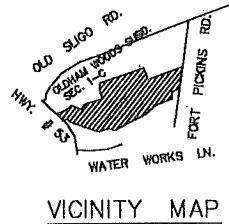
R.J. Roth

2 July 03

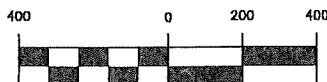
R.J. ROTH

P.L.S. # 2475

DATE



GRAPHIC SCALE



(IN FEET)

1 inch = 400 ft.

PLAT OF
ANNEXATION
FOR
LaGRANGE, KY
OF
GEORGE MARTIN
PROPERTY 229ac.+/-

DATE: JULY 2003

SHEET 2 OF 2