

CITY OF LAGRANGE

410 WEST JEFFERSON STREET LAGRANGE, KY 40031
(502) 222-1433 FAX (502) 222-5875 cityoflagrangeky.com

MAYOR
Elsie B. Carter

CLERK & TREASURER
Peggy W. Stephens

CITY ATTORNEY
Wade H. Helm

COUNCIL MEMBERS
James Beaumont
Joe Davenport
Jean Knight
Debbie Pollard
Lucy R. Ricketts
Jason Taylor
Denise Watts-Wilson
Kevin R. Woosley

September 29, 2005

Ms. Kandie Adkinson
Office of the Secretary of State
700 Capital Avenue, Suite 152
State Capitol
Frankfort, KY 40601

RECEIVED AND FILED
DATE Oct 5, 2005
TREY GRAYSON
SECRETARY OF STATE
COMMONWEALTH OF KENTUCKY
BY Kandie Adkinson

Dear Ms. Adkinson:

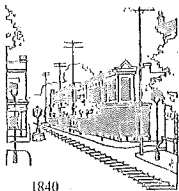
Enclosed are copies of documents relating to a recent annexation in the City of La Grange. These documents include a copy of the ordinance, legal description, City Clerk certification and annexation plat.

If you have any questions or need more information, please feel free to contact me at (502) 222-1433.

Best regards,

Peggy Stephens

Peggy Stephens
City Clerk



CITY OF LAGRANGE

410 WEST JEFFERSON STREET LAGRANGE, KY 40031
(502) 222-1433 FAX (502) 222-5875 cityoflagrangeky.com

MAYOR
Elsie B. Carter

CLERK & TREASURER
Peggy W. Stephens

CITY ATTORNEY
Wade H. Helm

COUNCIL MEMBERS
James Beaumont
Joe Davenport
Jean Knight
Debbie Pollard
Lucy R. Ricketts
Jason Taylor
Denise Watts-Wilson
Kevin R. Woosley

I certify that I am the duly qualified City Clerk of the City of La Grange, Kentucky and that the foregoing four pages of Ordinance No. 17-2005 is a true, correct and complete copy duly adopted by the City Council at a duly convened meeting held on September 21, 2005, as appears in the official records of said City.

WITNESS, my hand and seal, this 29th day of September, 2005.

Peggy L. Stephens
PEGGY L. STEPHENS

RECEIVED AND FILED
DATE Oct 5, 2005

TREY GRAYSON
SECRETARY OF STATE
COMMONWEALTH OF KENTUCKY
BY Charlie Ashworth

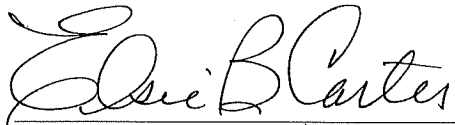
ORDINANCE NO. 17-2005

**AN ORDINANCE PURSUANT TO THE PROVISION OF
KRS 81A.410 AND KRS 81A.412 AND ALL OTHER APPLICABLE LAW ANNEXING
THE PROPERTY PRESENTLY CONTIGUOUS TO THE EXISTING LA GRANGE
CORPORATE LIMITS. (BADGETT/OCEDA PROPERTY)**

**BE IT ORDAINED BY THE CITY OF LAGRANGE, KENTUCKY, AS
FOLLOWS:**

The City of LaGrange, pursuant to KRS 81A.410 and 81A.412 and all other applicable law does hereby declare that the tract of land described in the attached plat and description adjoining and touching the city limits of the City of LaGrange is hereby annexed into the City of LaGrange. All property owners within the land to be annexed have given their written consent to this annexation. The land which is the subject of this annexation is more fully and particularly described in the attached exhibits (marked Exhibit "A") which include a legal description and plat for the 857.57 acres of property. The legal description and plat are incorporated herein as if fully set out. However, any existing roadways whether public or private within the area annexed shall remain the responsibility of the property owner to maintain. The City of LaGrange does not accept the maintenance of any roadway by reason of this annexation without a separate ordinance accepting the roadway for city maintenance.

WHEREFORE, pursuant to KRS 81A.410 and 81A.412, the tract of property described in the attached plat and description is hereby annexed into the City of LaGrange. Henceforth, from the date of passage and publication of this ordinance according to law, the tract of land in the attached exhibit incorporated herein by reference is hereby incorporated into the City of LaGrange and is now part of said City.


ELSIE B. CARTER, MAYOR

ATTEST:


PEGGY W. STEPHENS, CITY CLERK

FIRST READING: SEPTEMBER 6, 2005

SECOND READING AND PASSAGE: SEPTEMBER 21, 2005

VOTE:

5 FOR

0 AGAINST

0 ABSTAINED

LA GRANGE ANNEXATION DESCRIPTION

BADGETT / OCEDA PROPERTIES

BEGINNING at a point in a south line of the City of LaGrange and being the northeast corner of the land of Joan Dubey and Paulette Mitchell 613 feet east of the west right of way of Moody Lane (Kentucky Highway 2857); thence with the following lines of the city:

North 84 degrees 33 minutes 17 seconds East 3,326.60 feet to a corner with Dominion Homes of Kentucky, Ltd.;

with a west line of Dominion Homes, South 22 degrees 42 minutes 59 seconds East 1,382.81 feet to a point at the northwest corner of Griffin Lane (also known as Peak Road);

crossing said lane, South 18 degrees 31 minutes 10 seconds East 25.15 feet to the southwest corner of said Griffin Lane;

South 62 degrees 29 minutes 18 seconds East 1375.45 feet to a corner of Eagle Creek Golf Course and Green Valley/Lakewood Shores subdivisions; and

with the lines of said Eagle Creek and of Green Valley/Lakewood Shores, South 10 degrees 22 minutes 35 seconds West 653.13 feet;

thence leaving the City and running with proposed annexation lines the following courses and distances:

continuing with the lines of said Green Valley/Lakewood Shores, South 75 degrees 49 minutes 03 seconds West 641.16 feet;

South 14 degrees 43 minutes 42 seconds East 1,734.69 feet;

North 75 degrees 58 minutes 21 seconds East 3,323.52 feet to a point in the southwest right of way of Kentucky Highway 53 (variable right of way);

thence with said line of Highway 53 the following courses and distances:

South 09 degrees 04 minutes 54 seconds East 32.84 feet;

South 15 degrees 19 minutes 22 seconds East 180.64 feet;

South 09 degrees 25 minutes 19 seconds East 153.38 feet to a point of

curvature;

with a curve to left having a central angle of 30 degrees 14 minutes 58 seconds and a radius of 498.22 feet, the chord of which is South 24 degrees 26 minutes 16 seconds East 259.99 feet, to a point of tangency;

South 39 degrees 36 minutes 06 seconds East 131.05 feet;

South 30 degrees 50 minutes 09 seconds East 388.84 feet;

South 13 degrees 33 minutes 52 seconds East 298.19 feet;

South 52 degrees 01 minutes 40 seconds East 49.94 feet;

South 14 degrees 58 minutes 36 seconds East 741.26 feet; and

South 09 degrees 28 minutes 05 seconds East 32.61 feet to the northeast corner of the land of Louisville Gas and Electric Company; thence with the lines of said Louisville Gas and Electric Company, South 75 degrees 02 minutes 13 seconds West 90.70 feet; and South 15 degrees 01 minutes 06 seconds East 85.00 feet to a point in the northwest right of way of Moody Lane (Kentucky Highway 2856), said point being thirty feet (30') from the highway centerline; thence with said line of Moody Lane the following courses and distances:

South 75 degrees 02 minutes 13 seconds West 65.65 feet to a point of curvature;

with a curve to the right having a central angle of 05 degrees 29 minutes 16 seconds and a radius of 1,693.76 feet, the chord of which is South 77 degrees 46 minutes 51 seconds West 162.17 feet, to a point of reverse curvature;

with a curve to the left having a central angle of 05 degrees 07 minutes 50 seconds and a radius of 1,873.96 feet, the chord of which is South 77 degrees 57 minutes 34 seconds West 167.75 feet, to a point of tangency;

South 75 degrees 23 minutes 39 seconds West 1,650.06 feet to a point of curvature;

with a curve to the right having a central angle of 15 degrees 13 minutes 20 seconds and a radius of 298.00 feet, the chord of which is South 83 degrees 00 minutes 20 seconds West 78.94 feet, to a point of reverse curvature;

with a curve to the left having a central angle of 33 degrees 10 minutes 30 seconds and a radius of 374.21 feet, the chord of which is South 74 degrees 01 minutes 40 seconds West 213.66 feet, to a point of reverse curvature;

with a curve to the right having a central angle of 22 degrees 25 minutes 40 seconds and a radius of 645.01 feet, the chord of which is South 68 degrees 39 minutes 14 seconds West 250.87 feet, to a point of tangency; and

South 79 degrees 52 minutes 03 seconds West 1,888.40 feet to a point in the east line of James Vincent and Maxine Kinser; thence with said line of Kinser and continuing with the east line of Moody Heights subdivision, North 14 degrees 39 minutes 50 seconds West 1,560.14 feet to a corner with Lakewood Valley Development; thence with an east line of said Lakewood Valley, North 15 degrees 02 minutes 26 seconds West 401.89 feet; thence with the north lines of Lakewood Valley and continuing with the north line of The Ballard Place subdivision, South 74 degrees 55 minutes 02 seconds West 2,668.26 feet; thence continuing with a north line of The Ballard Place, South 84

degrees 47 minutes 51 seconds West 851.48 feet to a corner with Roy Gividen; thence with the east and north lines of Gividen the following courses and distances:

North 12 degrees 20 minutes 05 seconds West 883.59 feet;

South 84 degrees 15 minutes 11 seconds West 1,565.15 feet;

North 38 degrees 38 minutes 12 seconds West 69.27 feet; and

South 79 degrees 07 minutes 20 seconds West 613.36 feet to a point in the east right of way of Moody Lane (Kentucky Highway 2857), said point being thirty feet (30') from the highway centerline; thence with said line of Moody Lane the following courses and distances:

North 04 degrees 53 minutes 10 seconds East 98.05 feet to a point of curvature; with a curve to the left having a central angle of 15 degrees 56 minutes 06 seconds and a radius of 713.10 feet, the chord of which is North 03 degrees 04 minutes 54 seconds West 197.69 feet, to a point of tangency;

North 11 degrees 02 minutes 57 seconds West 322.88 feet;

with a curve to the right having a central angle of 50 degrees 41 minutes 36 seconds and a radius of 206.52 feet, the chord of which is North 14 degrees 17 minutes 51 seconds East 176.82 feet, to a point of reverse curvature;

with a curve to the left having a central angle of 44 degrees 58 minutes 44 seconds and a radius of 256.75 feet, the chord of which is North 17 degrees 09 minutes 14 seconds East 196.42 feet, to a point of reverse curvature;

with a curve to the right having a central angle of 23 degrees 53 minutes 46 seconds and a radius of 714.00 feet, the chord of which is North 06 degrees 36 minutes 43 seconds East 295.63 feet, to a point of tangency;

N 18 degrees 33 minutes 36 seconds East 429.20 feet to a point of curvature;

with a curve to the right having a central angle of 55 degrees 27 minutes 40 seconds and a radius of 86.63 feet, the chord of which is North 46 degrees 17 minutes 32 seconds East 80.62 feet, to a point of tangency;

North 74 degrees 01 minutes 27 seconds East 380.09 feet to a point of curvature;

and with a curve to the left having a central angle of 35 degrees 36 minutes 44 seconds and a radius of 164.98 feet, the chord of which is North 56 degrees 13 minutes 08 seconds East 100.90 feet, to a point in the south line of Eddie I. and Verna Kay Huber; thence with the lines of said Huber and continuing with the lines of John A. and Sharon M. Cox, South 79 degrees 53 minutes 45 seconds East 150.32 feet; North 45 degrees 24 minutes 14 seconds East 103.55 feet; and North 20 degrees 07 minutes 27 seconds West 280.22 feet to a point in the easterly right of way of Moody Lane (Kentucky Highway 2857), said point being thirty feet (30') from the road centerline; thence with said line of Moody Lane the following courses and distances:

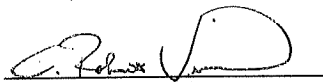
North 20 degrees 47 minutes 28 seconds East 334.82 feet;

North 23 degrees 36 minutes 56 seconds East 582.26 feet;

North 25 degrees 23 minutes 38 seconds East 789.74 feet to a point of curvature;

and with a curve to the left having a central angle of 27 degrees 32 minutes 04 seconds and a radius of 432.56 feet, the chord of which is North 11 degrees 37 minutes 37 seconds East 205.88 feet, to the southwest corner of the land of Scott D. and Jessica Ferguson; thence with the lines of said Ferguson and continuing with the line of Joan Dubey and Paulette Mitchell, North 73 degrees 39 minutes 43 seconds East 464.29 feet; North 74 degrees 45 minutes 25 seconds East 170.45 feet; and North 20 degrees 34 minutes 02 seconds West 626.07 feet to the beginning, containing 857.57 acres per survey dated June 1981 by Rankin Associates, Inc.

Description Prepared By



C. Robert Vinsand
Professional Land Surveyor

OVERSIZE MAP INCLUDED WITH
SUBMISSION.

To research the map, contact the
Office of Secretary of State
or the County Clerk.