

A RESOLUTION ADOPTING A MODERN AND ACCURATE LEGAL DESCRIPTION OF
TERRITORY PREVIOUSLY ANNEXED BY ORDINANCE

WHEREAS, the City of LaGrange, Kentucky has enacted numerous ordinances annexing property into the corporate limits of the City of LaGrange; and

WHEREAS, each individual annexation contains a prior survey often prepared by a now unknown individual, and further references documentation that is no longer in existence; and

WHEREAS, the City wishes to provide a modern, accurate, easily identifiable legal description reflecting bearings and coordinates based upon the state plane coordinate system, including relevant GPS and GIS data, same having been certified by a professional land surveyor for each prior annexation; and

WHEREAS, the city wishes to comply with the requirements of Amended KRS 81A.470 effective July 13, 2004; and

WHEREAS, the City does not intend to amend or replace its prior ordinance annexing, but rather to interpret the defined boundaries of the territory previously annexed and to adopt a modern and accurate legal description of territory previously annexed.

NOW THEREFORE, BE IT RESOLVED BY THE CITY COUNCIL OF THE CITY OF LAGRANGE, KENTUCKY:

SECTION 1. That the City Council of the City of LaGrange, Kentucky, hereby adopts the following legal description, and a plat attached hereto as prepared by C. Robert Vinsand, Licensed Professional Land Surveyor No. 3279 by new survey as an accurate description of the property previously annexed into the corporate city limits of the City of LaGrange by Ordinance 6-90 C, a copy of which is attached hereto as Exhibit 2, and hereby adopts said new legal description and plat as the official legal description and plat to be adopted by the City for all purposes when referencing this prior annexation.

SECTION 2. This new legal description as prepared by C. Robert Vinsand, Licensed Professional Land Surveyor No. 3279 is as follows:

116.95 ACRES ON THE WEST SIDE OF KENTUCKY HIGHWAY 53

BEGINNING at a point in the west right-of-way line of Kentucky Highway 53, said point having the coordinate values of 325,081.94 North and 1,321,282.26 East in the Kentucky State Plane Coordinate System (North Zone), and being a corner with the corporate boundary of the City of LaGrange; thence with the right of way of Highway 53, South 13 degrees 15 minutes 55 seconds East 634.81 feet and South 13 degrees 00 minutes 09 seconds East 387.11 feet to a point in the corporate boundary of the City of LaGrange; thence with said corporate boundary for the following courses and distances:

- South 72 degrees 15 minutes 50 seconds West 2,614.69 feet;
- North 62 degrees 29 minutes 47 seconds West 1,375.02 feet to a point in the southeast line of Griffin Lane; thence crossing Griffin Lane;
- North 18 degrees 20 minutes 05 seconds West 25.15 feet to a point in the north line of Griffin Lane;
- North 22 degrees 16 minutes 48 seconds West 1,382.84 feet;
- North 73 degrees 58 minutes 10 seconds East 920.72 feet; and
- South 57 degrees 11 minute 59 second East 586.94 feet to the northwest corner of

Shannon Acres subdivision; thence with the southwest line of Shannon Acres, South 57 degrees 09 minutes 51 seconds East 308.50 feet to a corner with the corporate boundary of the City of LaGrange; thence with said corporate boundary the following courses and distances:

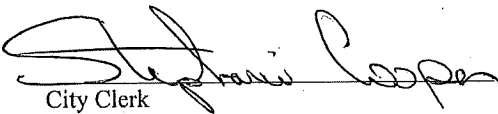
- South 56 degrees 14 minutes 11 seconds East 397.52 feet;
- South 10 degrees 37 minutes 16 seconds West 176.02 feet;
- South 13 degrees 25 minutes 01 seconds East 131.66 feet; and
- North 73 degrees 28 minutes 44 seconds East 2,131.38 feet to the beginning,

containing 116.95 acres and being the same area of land as described in City Annexation Ordinance "6-90 C."

CERTIFICATION

I, Stephanie Cooper, Clerk of the City of LaGrange, Kentucky, do hereby certify that the above Resolution 2011- 6 and Ordinance 6-90 is a true and correct copy as was presented to the City Council of the City of LaGrange, Kentucky, at their regularly scheduled meeting on September 6, 2011.

Given under my hand this 6 day of September, 2011.


City Clerk

CITY OF LA GRANGE ANNEXATION

116.95 ACRES ON THE WEST SIDE OF KENTUCKY HIGHWAY 53

BEGINNING at a point in the west right-of-way line of Kentucky Highway 53, said point having the coordinate values of 325,081.94 North and 1,321,282.26 East in the Kentucky State Plane Coordinate System (North Zone), and being a corner with the corporate boundary of the City of Lagrange; thence with the right of way of Highway 53, South 13 degrees 15 minutes 55 seconds East 634.81 feet and South 13 degrees 00 minutes 09 seconds East 387.11 feet to a point in the corporate boundary of the City of LaGrange; thence with said corporate boundary for the following courses and distances:

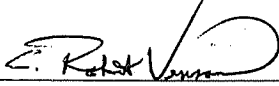
- South 72 degrees 15 minutes 50 seconds West 2,614.69 feet;
- North 62 degrees 29 minutes 47 seconds West 1,375.02 feet to a point in the southeast line of Griffin Lane; thence crossing Griffin Lane;
- North 18 degrees 20 minutes 05 seconds West 25.15 feet to a point in the north line of Griffin Lane;
- North 22 degrees 16 minutes 48 seconds West 1,382.84 feet;
- North 73 degrees 58 minutes 10 seconds East 920.72 feet; and
- South 57 degrees 11 minute 59 second East 586.94 feet to the northwest corner of

Shannon Acres subdivision; thence with the southwest line of Shannon Acres, South 57 degrees 09 minutes 51 seconds East 308.50 feet to a corner with the corporate boundary of the City of Lagrange; thence with said corporate boundary the following courses and distances:

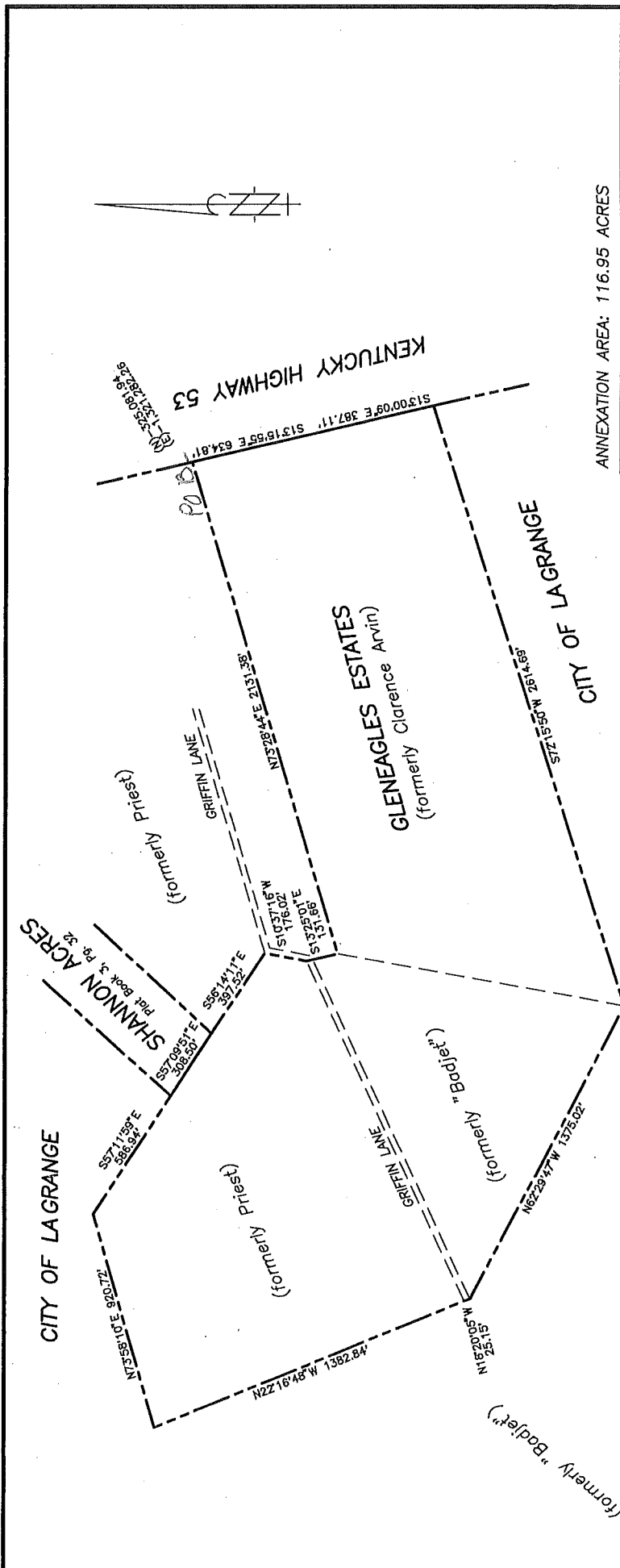
- South 56 degrees 14 minutes 11 seconds East 397.52 feet;
- South 10 degrees 37 minutes 16 seconds West 176.02 feet;
- South 13 degrees 25 minutes 01 seconds East 131.66 feet; and
- North 73 degrees 28 minutes 44 seconds East 2,131.38 feet to the beginning,

containing 116.95 acres and being the same area of land as described in City Annexation Ordinance "6-90 C."

Description Prepared By

 07/28/11
C. Robert Vinsand, PE/PLS





ANNEXATION AREA: 116.95 ACRES

ANNEXATION PLAT FOR
CITY OF LAGRANGE
 LA GRANGE, KENTUCKY

Location: AS SHOWN
 Reference: CITY ORDINANCE 6-90 C

BY
VINSAND
ENGINEERING & LAND SURVEYING, INC.
 306 W. JEFFERSON STREET - LA GRANGE, KY. 40031
 (502) 222-7487

JULY 28, 2011
 Scale: 1"=500'

Plat prepared by
C. Robert Vinsand
 C. Robert Vinsand PLS 3279

Date
 5/7/11

STATE OF KENTUCKY
 C. ROBERT VINSAND
 3279
 LICENSED PROFESSIONAL
 LAND SURVEYOR

INDICATES EXISTING CITY BOUNDARY

NOTE: PURPOSE OF PLAT IS TO PROVIDE UPDATED INFORMATION FOR 1990 ORDINANCE FOR WHICH THERE WAS NO PLAT.

Plat prepared from prior annexation plats, deeds and surveys of record

Coordinate shown is Kentucky State Plane Coordinate System - North Zone