

RECEIVED

JUL 16 1981

SECRETARY OF STATE
COMMONWEALTH OF KY.

City of LaCenter

Date of Incorporation

Unable to locate from the present circuit court clerk's office or from any books or records in the area. If this information is found, it will be forwarded to your office.

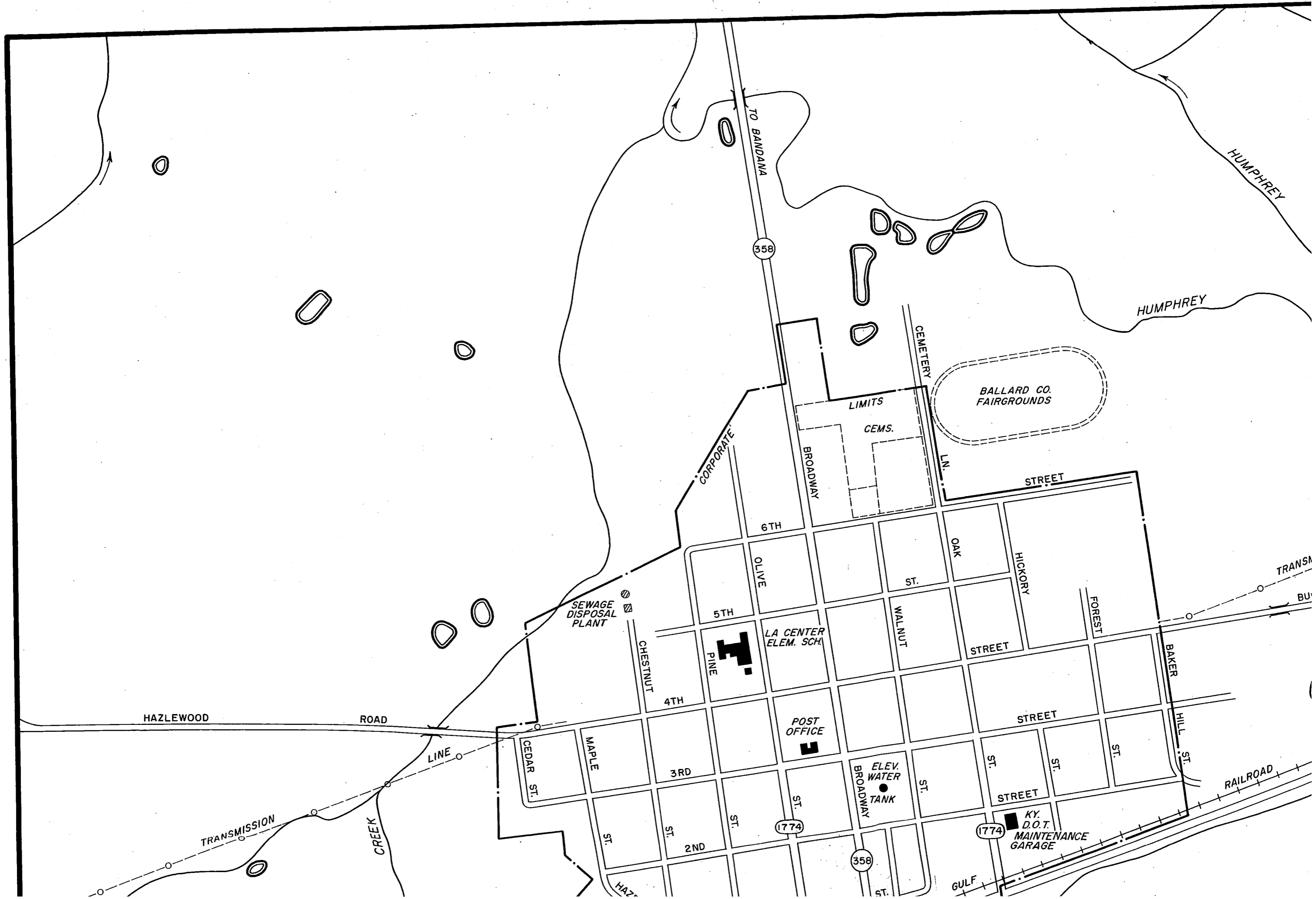
Present Classification

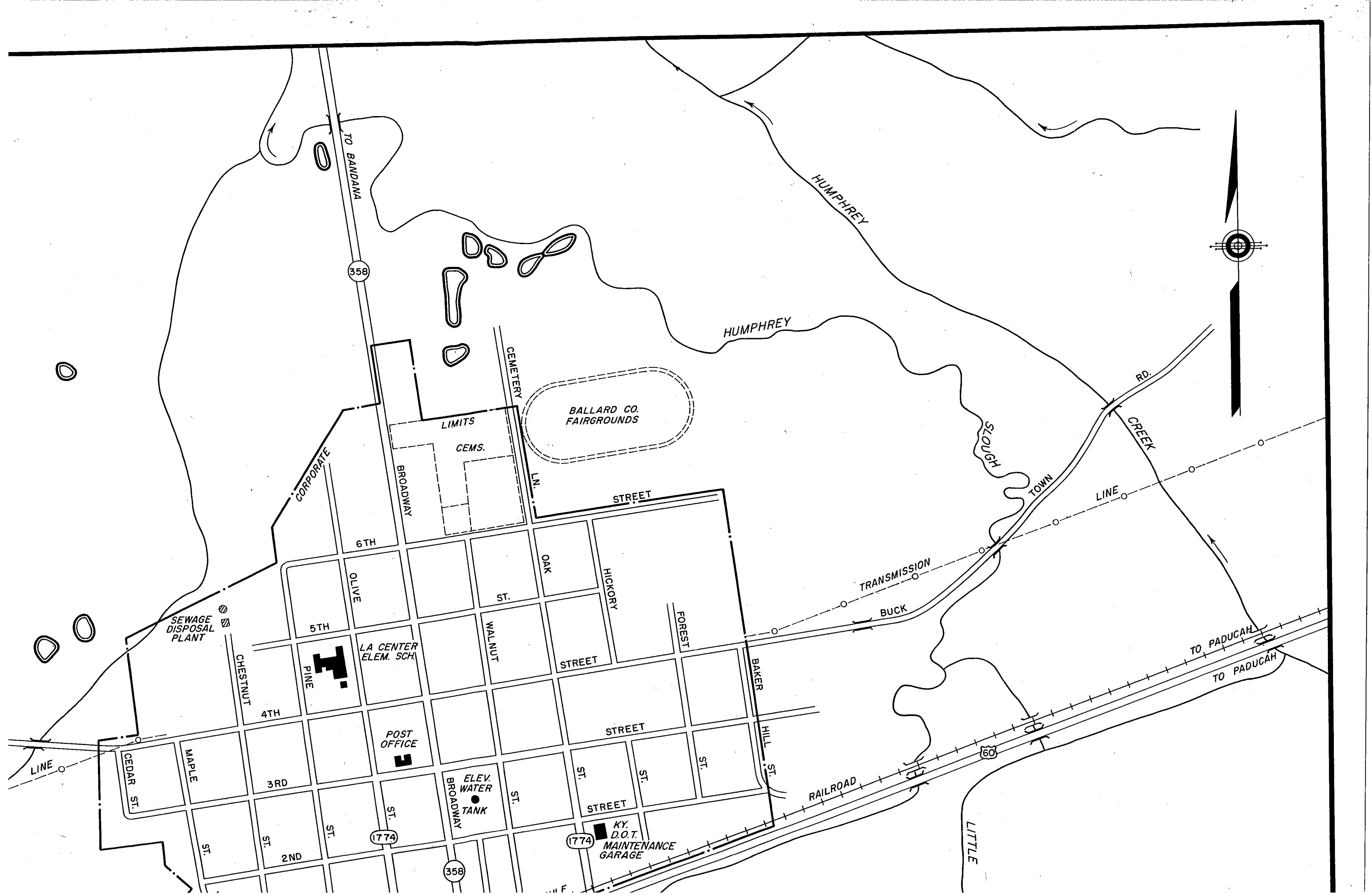
Fifth Class City

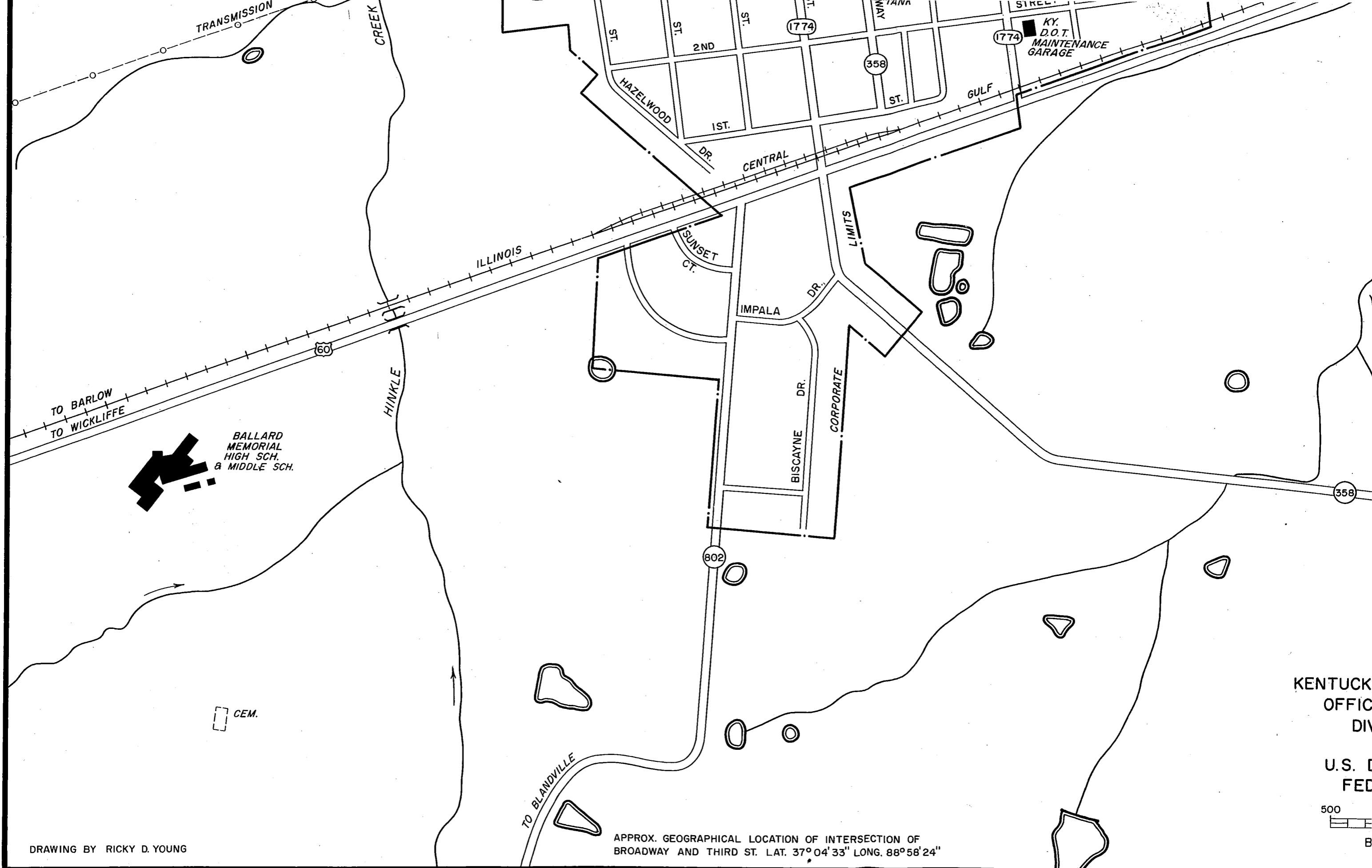
Present Boundaries

See Enclosed Map

Ballard





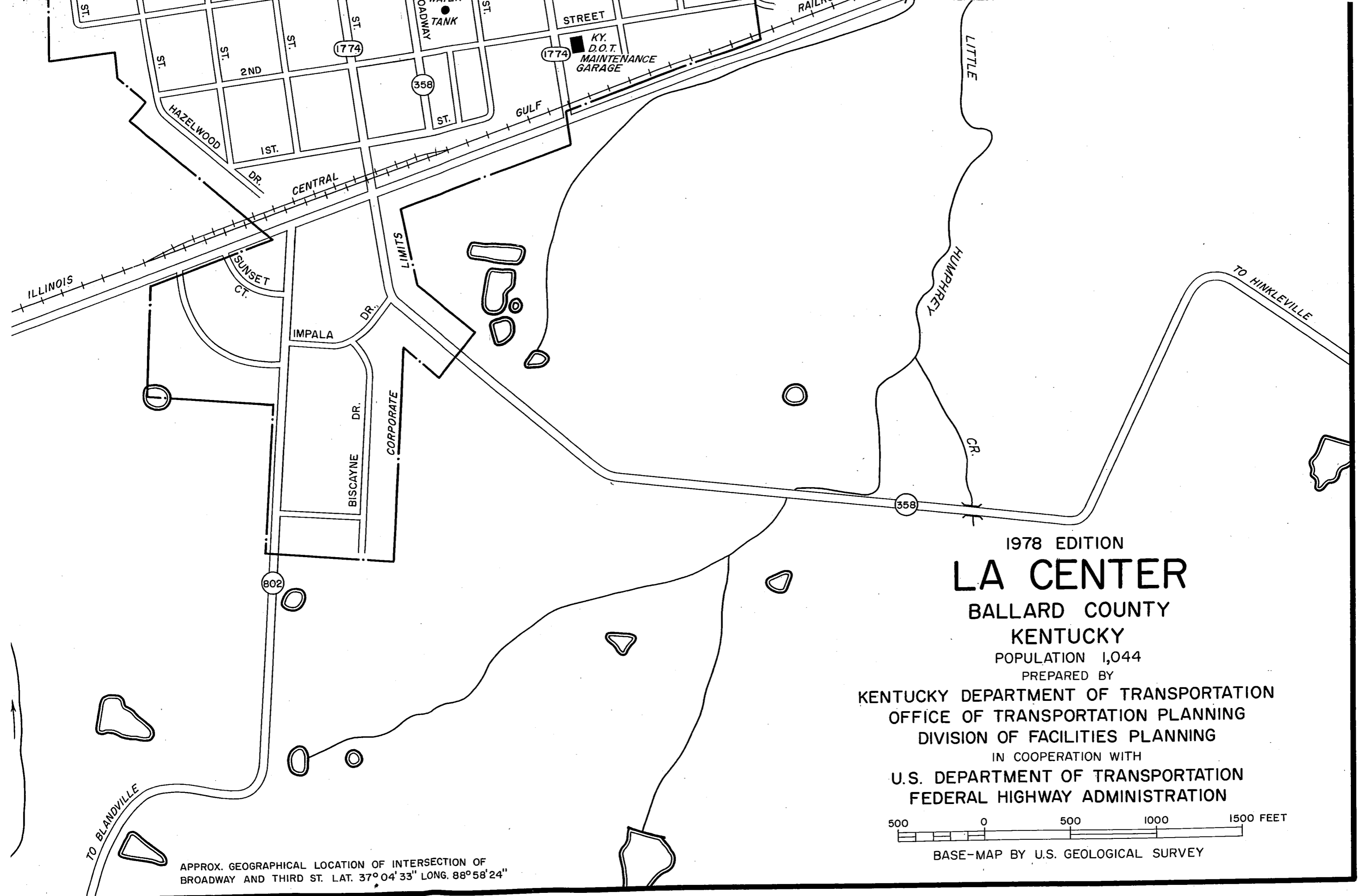


DRAWING BY RICKY D. YOUNG

KENTUCKY
OFFICE
DIVISION

U.S. []
FEDERAL

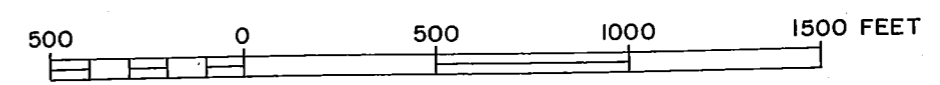
500
[]
B



1978 EDITION
LA CENTER
BALLARD COUNTY
KENTUCKY

POPULATION 1,044
PREPARED BY

KENTUCKY DEPARTMENT OF TRANSPORTATION
OFFICE OF TRANSPORTATION PLANNING
DIVISION OF FACILITIES PLANNING
IN COOPERATION WITH
U.S. DEPARTMENT OF TRANSPORTATION
FEDERAL HIGHWAY ADMINISTRATION



BASE-MAP BY U.S. GEOLOGICAL SURVEY

APPROX. GEOGRAPHICAL LOCATION OF INTERSECTION OF
BROADWAY AND THIRD ST. LAT. 37° 04' 33" LONG. 88° 58' 24"