

FILE

June 10, 2002

AN ORDINANCE RELATING TO THE
ANNEXATION OF LAND OR TERRITORY TO THE
CITY OF LAWRENCEBURG, KENTUCKY

JOHN Y. BROWN III
SECRETARY OF STATE
COMMONWEALTH OF KENTUCKY

BY K. Adkins

2002-07

WHEREAS, on January 14, 2002, the Board of Council of the City of Lawrenceburg passed Ordinance No. 2001-14 in which it expressed its intent to annex certain lands containing approximately 771 acres adjacent to the corporate limits of the City of Lawrenceburg at the northeast corner of the intersection of U. S. Bypass 127 and Kentucky Highway 44, at the northwest corner of the same intersection, and south of Kentucky Highway 44 adjacent to property owned by Southern States Corp. Inc.;

WHEREAS, a summary of Ordinance 2001-14 was published in *The Anderson News* on January 16, 2002;

WHEREAS, a notice of the passage of Ordinance 2001-14 was mailed to the owners of all property to be annexed at the addresses recorded in the office of the Property Valuation Administrator for Anderson County, Kentucky, which notice informed the owners of the effected property that KRS 81A.420(2) allows them to file petitions opposing the intended annexation;

WHEREAS, no petition opposing the intended annexation was received from a property owner or voter residing within the property intended to be annexed;

WHEREAS, the time afforded for filing petitions opposing the proposed annexation has passed;

WHEREAS, the lands described in Ordinance 2001-14 are suitable for development for urban purposes without unreasonable delay, and are not within the boundary of another incorporated city, and

WHEREAS, it is desirable for the City of Lawrenceburg to annex the unincorporated territory,

NOW THEREFORE, be it ordained by the Board of Council of the City of Lawrenceburg, convened in session on the 23 day of April, 2002, as follows:

1. That pursuant to KRS 81A.400, *et seq.*, the Board of Council of the City of Lawrenceburg, Kentucky, hereby annexes into the corporate limits of the City of Lawrenceburg certain real estate containing approximately 771 acres and which is more particularly described as follows:

Beginning at a point in the South right of way line of Kentucky Highway 44 in the line of Litkenhus and Southern States Lawrenceburg Cooperative,

Incorporated, said line being the existing corporate boundary of the City of Lawrenceburg, and with said line South 1.75 degrees West 2022.9 feet to a corner; thence continuing with the boundary of Litkenhus, North 85 degrees West 640.2 feet to a corner; thence South 5.4 degrees West 1056 feet to a corner; thence North 87 degrees West 416.46 feet to a point; thence with the boundary of Stratton North 87 degrees West 2087.4 feet to a point; thence with the line of Reinle North 87 degrees, 12 minutes 14 seconds West 541.78 feet to a point; thence with the line of LaGrange Woods Country Club, Inc., North 87 degrees 12 minutes 14 seconds West 1048.55 feet to a corner; thence North 08 degrees 26 minutes 28 seconds West 576.52 feet to a point; thence North 32 degrees 53 minutes 38 seconds West 188.93 feet to a point; thence North 28 degrees 34 minutes 16 seconds West 651.22 feet to a point; thence North 17 degrees 56 minutes 51 seconds West 42.54 feet to a point; thence North 02 degrees 03 minutes 10 seconds East 388.61 feet to a point on the South right of way of Kentucky Highway 44; thence with the South right of way of Kentucky Highway 44 24.53 feet along an arc whose chord North 66 degrees 56 minutes 29 seconds East, 24.53 feet to a point; North 23 degrees 31 minutes 29 seconds West 45 feet to a point; thence 119.50 feet along an arc whose chord is North 64 degrees 08 minutes 05 seconds East; 119.47 feet to a point; thence North 61 degrees 47 minutes 39 seconds East 873.60 feet to a point; thence 637 feet along an arc whose chord is North 55 degrees 54 minutes 36 seconds East 636.71 feet to a point; thence continuing with the South right of way of Kentucky Highway 44 and the line of Click North 76 degrees 14 minutes 04 seconds East 109 feet to a point; thence North 77 degrees 27 minutes 44 seconds East 100 feet to a point; thence continuing with the South right of way of Kentucky Highway 44 and the line of Young 175 feet to a point; thence continuing with the South right of way of Kentucky Highway 44 and the line of Hughes approximately 100 feet to a point opposite the Southwest corner of Springate; thence crossing Kentucky Highway 44 with the line of Springate North 17 degrees 10 minutes West 2659.8 feet to a corner; thence North 29 degrees 14 minutes 02 seconds East 237.14 feet to a point; thence North 43 degrees 48 minutes 09 seconds East 217.09 feet to a point; thence North 62 degrees 59 minutes 47 seconds East 167.47 feet to a corner; thence North 03 degrees 19 minutes 05 seconds East 993.91 feet to a point; thence North 03 degrees 50 minutes 57 seconds East 324.82 feet to a corner; thence South 78 degrees 18 minutes 33 Seconds West 661.01 feet to a corner; thence North 09 degrees 01 minute 22 seconds East 67.05 feet to a point; thence North 26 degrees 56 minutes 35 seconds East 113.74 feet to a point; thence North 37 degrees 23 minutes 00 seconds East 84.50 feet to a point; thence North 56 degrees 59 minutes 57 seconds East 324.57 feet to a point; thence South 79 degrees 12 minutes 24 seconds East 282.11 feet to a point; thence North 60 degrees 52 minutes 42 seconds East 182.49 feet to a point; thence South 89 degrees 55

minutes 19 seconds East 673.33 feet to a point; thence with the boundary of Case North 67.75 degrees East 181.5 feet to a point; thence North 31.75 degrees East 528 feet to a point; thence North 37 degrees East 379.5 feet to a point; thence South 83 degrees East 488.4 feet to a point; thence South 40 degrees East 669.9 feet to a point; thence North 56 degrees West 202.95 feet to a point; thence North 43.25 degrees East 404.25 feet to a point; thence North 74.25 degrees East 356.4 feet to a point; thence South 84.25 degrees East 132 feet to a point; thence South 59.75 degrees East 138.6 feet to a point; thence South 8.5 degrees East 155.1 feet to a point; thence South 45 degrees West 1077.45 feet to a point; thence South 23.25 degrees West 399.3 feet to a point; thence South 54.25 degrees East 651.75 feet to a point; thence South 19 degrees West 231 feet to a point; thence South 54.25 degrees East 148.5 feet to a point; thence South 79.5 degrees East 267.3 feet to a point; thence South 62.5 degrees East 871.2 feet to a point; thence South 44.5 degrees East 132 feet to a point; thence North 60 degrees East approximately 150 feet to the west right of way of U. S. 127 Bypass; thence crossing U. S. 127 Bypass to a metal post in the east right of way of U. S. 127 Bypass (boundary of Smith and Greer) (said metal post being North 5 degrees 41 minutes 27 seconds West 529.42 feet to a metal post and thence North 7 degrees 33 minutes 34 seconds West 1350.54 feet from the northeast intersection of the rights of way of U. S. 127 Bypass and Kentucky Highway 44); thence with said right of way and the boundary of Smith and Greer, North 10 degrees 29 minutes 50 seconds West 389.67 feet to a metal post; thence North 9 degrees 49 minutes 11 seconds West 350.17 feet to an iron pin (set); thence leaving said right of way and continuing with the boundary of Smith and Greer, North 10 degrees 30 minutes 30 seconds East 160.69 feet to a PK nail in post; thence South 84 degrees 28 minutes 24 seconds East 780.81 feet to a PK nail in post; thence South 4 degrees 38 minutes 00 seconds West 735.15 feet to a point; thence North 62 degrees 36 minutes 46 seconds East 199.98 feet to a point; thence South 72 degrees 27 minutes 53 seconds East 142.23 feet to a point; thence South 50 degrees 49 minutes 56 seconds East 280.12 feet to a point; thence South 81 degrees 22 minutes 13 seconds East 241.20 feet to a point; thence North 3 degrees 21 minutes 20 seconds West 247 feet to a point; thence North 87 degrees 13 minutes 51 seconds East 156.90 feet to a point; thence South 82 degrees 15 minutes 51 seconds East 857.58 feet to a point; thence South 6 degrees 28 minutes 36 seconds East 326.35 feet to a point; thence South 11 degrees 01 minute 24 seconds West 29.65 feet to a point; thence South 32 degrees 01 minutes 24 seconds West 16 feet to a point; thence North 89 degrees 58 minutes 36 seconds West 63.60 feet to a point; thence South 7 degrees 01 minute 24 seconds West 100 feet; thence North 72 degrees 45 minutes 47 seconds East 720.37 feet to a point; thence South 17 degrees 14 minutes 13 seconds West 355.31 feet to an iron pin (set); thence South 71 degrees 12 minutes 01 seconds West 200 feet to a point; thence South 18 degrees

47 minutes 59 seconds East 265 feet to a point in the former north right of way line of Kentucky Highway 44; thence continuing to the centerline of Kentucky Highway 44 and following said centerline (the existing boundary of the City of Lawrenceburg) generally South 69 degrees West 2,945.18 feet to the northeast intersection of the rights of way of U. S. 127 Bypass and Kentucky Highway 44; thence crossing the intersection of U. S. 127 Bypass and Kentucky Highway 44 in a southwesterly direction to the southwestern intersection of the rights of ways of U. S. 127 Bypass and Kentucky Highway 44; thence with the south right of way of Kentucky Highway 44, the boundary of the City of Lawrenceburg, and the lands of the Witherspoon heirs South 64 degrees 58 minutes 10 seconds West 296.47 feet to a point; thence South 71 degrees 35 minutes 33 seconds West 551.07 feet to a point; thence South 59 degrees 56 minutes 49 seconds West 259.36 feet to a point; thence with the lands of the Southern States Lawrenceburg Coop, Inc., South 67 degrees 36 minutes 00 seconds West 175.86 feet to a point; thence South 76 degrees 25 minutes 00 seconds West 262.12 feet to the point of beginning.

In addition to the lands described above there is included within the land to be annexed a tract of land owned by the City of Lawrenceburg lying adjacent to the north line of Moore, the Southwestern boundary of which is the northeastern boundary of Moore following the meanders of Hammond creek and the western, northern, and Eastern boundaries of which are as follows: Beginning at an iron pin, said beginning point being more fully described with the following: from the centerline intersection of Kentucky Highway 44 and U. S. Highway 127 (Lawrenceburg By-Pass), 1.05 miles northeasterly to a point in the west shoulder of U. S. Highway 127 By-Pass near mile point 5.8, directly over a 10' x 10' drainage culvert, thence South 42 degrees 22 minutes 22 seconds West 753.1 feet to the intersection of the centerline of Case Road and Hammond Creek; thence in a westerly direction 1,169 feet with Case Road to the point of the beginning; the Northern and Western boundaries are described as follows: from the point of beginning South 68 degrees 00 minutes 39 seconds West 110.4 feet to a post; thence South 88 degrees 55 minutes 37 seconds West 178.93 feet to a post; thence North 35 degrees 49 minutes 06 seconds West 150.64 feet to a post; thence North 46 degrees 54 minutes 30 seconds West 120.55 feet to a post; thence North 52 degrees 44 minutes 46 seconds West 284.96 feet to an iron pin; thence North 67 degrees 29 minutes 27 seconds West 68.41 feet to an iron pin; and thence South 07 degrees 45 minutes 09 seconds West 32.05 feet to a point in the centerline of said creek and the boundary of Moore; from the point of beginning, the Eastern boundary is described as follows: South 09 degrees 30 minutes 20 Seconds East to a point in the centerline of Hammond Creek and the northern boundary of Moore.


3. Be it further ordained that the Mayor of the City of Lawrenceburg shall cause an accurate Map of the annexed area, together with a metes and bounds description and including a certified copy of this Ordinance, to be recorded in the Office of the Anderson County Clerk and in the office of the Secretary of State for the Commonwealth of Kentucky

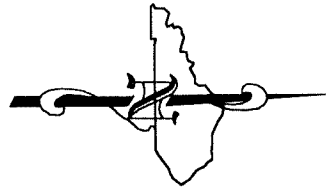
	Yea	Nay
Ken Evans	<u>X</u>	<u> </u>
Larry Giles	<u>X</u>	<u> </u>
Robert Hume	<u>X</u>	<u> </u>
Bob Mefford	<u>X</u>	<u> </u>
Helen Shryock	<u>X</u>	<u> </u>
Bobby Sparrow	<u>X</u>	<u> </u>

Published in *The Anderson News* on May 1, 2002.

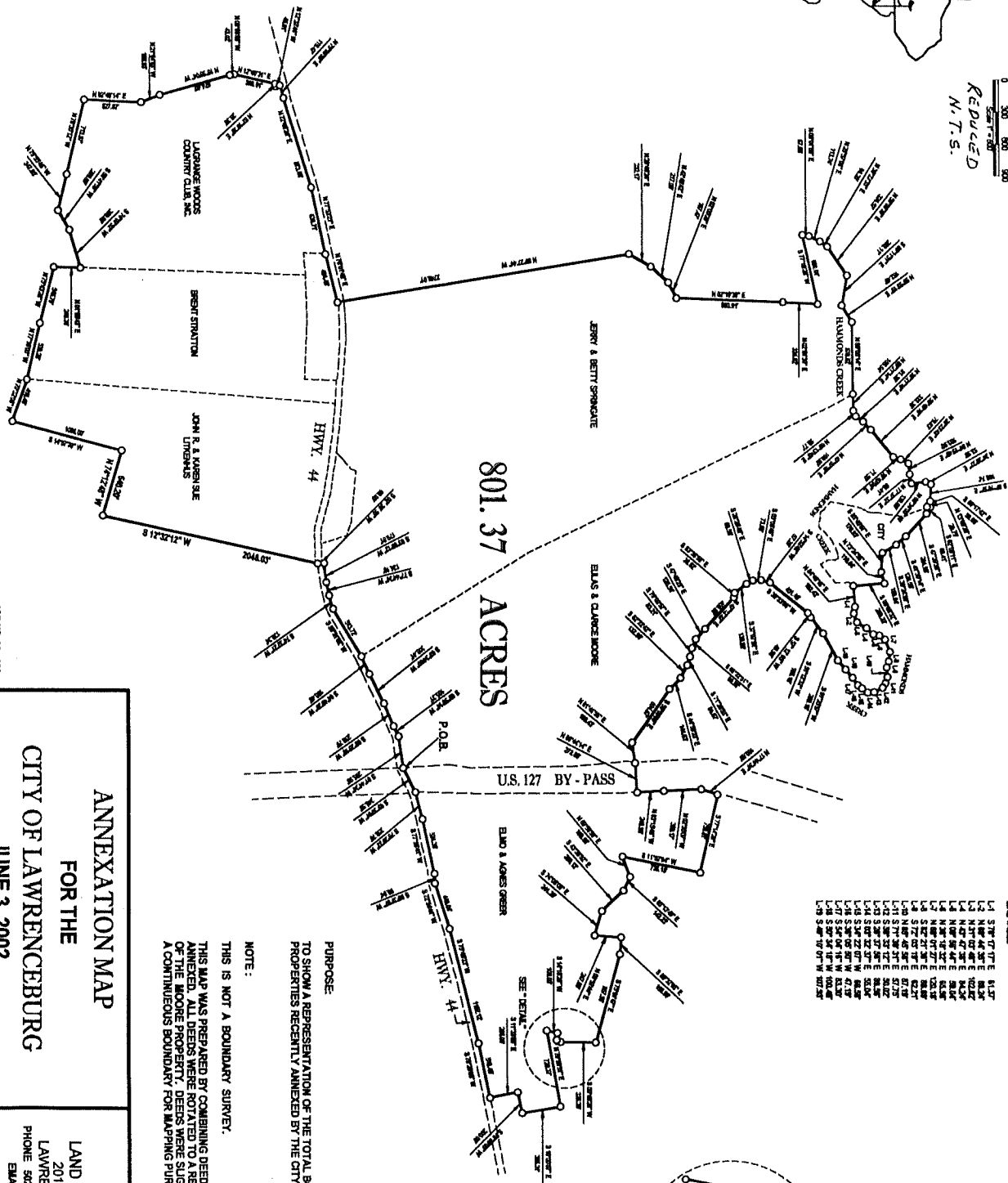
Approved

Attest:


Edwinna C. Baker, Clerk
City of Lawrenceburg



0 200 400 600
Feet
Reduced
N.T.S.



LINE TABLE

L-1	37° 17' 17" E	84.37'
L-2	37° 17' 17" E	84.37'
L-3	37° 17' 17" E	84.37'
L-4	37° 17' 17" E	84.37'
L-5	37° 17' 17" E	84.37'
L-6	37° 17' 17" E	84.37'
L-7	37° 17' 17" E	84.37'
L-8	37° 17' 17" E	84.37'
L-9	37° 17' 17" E	84.37'
L-10	37° 17' 17" E	84.37'
L-11	37° 17' 17" E	84.37'
L-12	37° 17' 17" E	84.37'
L-13	37° 17' 17" E	84.37'
L-14	37° 17' 17" E	84.37'
L-15	37° 17' 17" E	84.37'
L-16	37° 17' 17" E	84.37'
L-17	37° 17' 17" E	84.37'
L-18	37° 17' 17" E	84.37'
L-19	37° 17' 17" E	84.37'
L-20	37° 17' 17" E	84.37'

JOB NO. 02-132

ANNEXATION MAP
FOR THE
CITY OF LAWRENCEBURG
JUNE 3, 2002

DPS
LAND SURVEYORS, INC.
201 S. MAIN STE. 9
LAWRENCEBURG, KY 40342
PHONE 502-859-6544 FAX 502-859-6580
EMAIL: dps@psj.net

PURPOSE:
TO SHOW A REPRESENTATION OF THE TOTAL BOUNDARY OF
PROPERTIES RECENTLY ANNEXED BY THE CITY OF LAWRENCEBURG.

NOTE:
THIS IS NOT A BOUNDARY SURVEY.

THIS MAP WAS PREPARED BY COMBINING DEEDS OF PROPERTIES RECENTLY
ANNEXED. ALL DEEDS WERE ROTATED TO A RECENT UNRECORDED SURVEY
OF THE MOORE PROPERTY. DEEDS WERE SLIGHTLY ALTERED TO CREATE
A CONTINUOUS BOUNDARY FOR MAPPING PURPOSES ONLY.