

RESOLUTION 2017-04

**A RESOLUTION ADOPTING A MODERN AND ACCURATE LEGAL
DESCRIPTION OF TERRITORY PREVIOUSLY ANNEXED BY
ORDINANCE 95-06**

WHEREAS, the City of Lebanon has enacted numerous ordinances annexing property into the corporate limits of the City of Lebanon; and

WHEREAS, each individual annexation contains a prior survey oft prepared by now unknown individual, and further references documentation that is no longer in existence or is no longer easily ascertainable; and

WHEREAS, the City wishes to provide a modern, accurate, easily identifiable legal description reflecting bearings and coordinates based upon the state plane coordinate system, including relevant GPS and GIS data, same having been certified by a professional land surveyor for each prior annexation; and

WHEREAS, the city wishes to comply with the requirements of Amended KRS 81A.470 effective July, 13, 2004; and

WHEREAS, the City does not intend to amend or replace its prior ordinance annexing, but rather to interpret the defined boundaries of the territory previously annexed and adopt a modern and accurate legal description of territory previously annexed.

NOW THEREFORE, BE IT RESOLVED BY THE CITY COUNCIL OF THE CITY OF LEBANON, KENTUCKY:

SECTION 1. That the City Council of the City of Lebanon hereby adopts the following legal description, and a plat attached hereto as prepared by Nathan King, Licensed Professional Land Surveyor No. 3831 by new survey as an accurate depiction of the property previously annexed into the corporate city limits of the City of Lebanon by Ordinance 95-06 enacted on November 13, 1995, a copy of which is attached hereto as Exhibit "1", and hereby adopts said new legal description and plat as the official legal description and plat to be adopted by the City for all purposes when referencing this prior annexation.

SECTION 2. This new legal description as prepared by Nathan King a Licensed Professional Land Surveyor No. 3831 is as follows:

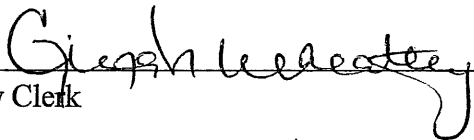
RECEIVED AND FILED
DATE October 25, 2017

ALISON LUNDERGAN GRIMES
SECRETARY OF STATE
COMMONWEALTH OF KENTUCKY
BY Karbo Advisor

CERTIFICATION

I, the undersigned, Clerk of the City of Lebanon do hereby certify that, the above Resolution 2017-04 is a true and correct copy as was presented to the City Council of the City of Lebanon at their regular meeting dated September 11, 2017.

Given under my hand this 11th day of September, 2017.


City Clerk

KWM

ENGINEERING & SURVEYING, LLC

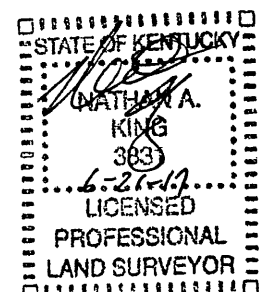
555 MERCER AVE., LEBANON, KY 40033
BUSINESS: (270) 692-0089
MOBILE: (270) 590-4603
kwm.nk@windstream.net

Lebanon, Kentucky Resolution for original Annexation Ordinance 95-06

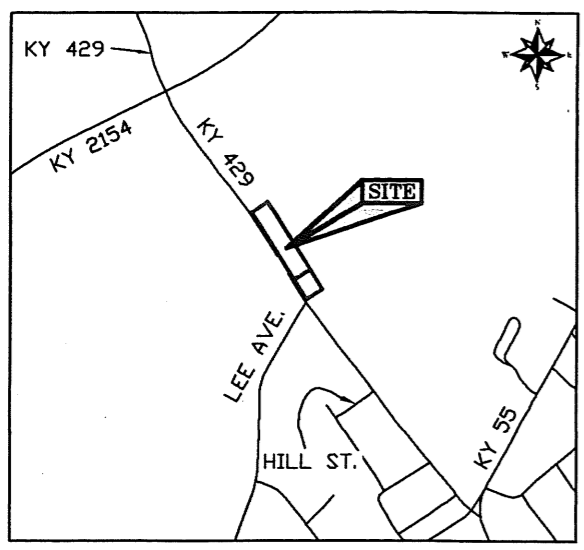
A certain parcel of land being Lots 2 thru 8 of Wilson Subdivision, Section A (plat as shown in DB 123; PG 94) and being all of original Annexation Ordinance 95-06, lying along the east side of Ky Hwy 429 (St. Rose Road) and approximately 180' to the north of the intersection with Lee Avenue in Marion County, Kentucky and adjacent to the north side of the city of Lebanon per Annexation Ordinance 90-03 and being more particularly described as follows:

The bearings stated herein are referenced to Geodetic North as determined by GPS observations.

Beginning at a point on the east side of Ky Hwy 429, a corner common to the north boundary of the city of Lebanon per Annexation Ordinance 90-03, said corner being across Hwy 429 and 180' north from its intersection with Lee Avenue; THENCE leaving Lebanon boundary with the road, N30°22'53"W, 80.84' to a point; THENCE N31°58'11"W, 79.92' to a point; THENCE N32°17'57"W, 327.82' to a point; THENCE N34°05'20"W, 134.00' to a point common to Edward & Mary Hill (DB 143; PG 391); THENCE with Hill, N55°32'16"E, 149.93' to a point; THENCE with same, S34°05'06"E, 134.00' to a point; THENCE with same, S32°18'28"E, 334.27' to a point; THENCE with same, S32°04'45"E, 81.55' to a point; THENCE with same, S30°19'10"E, 78.77' to a point common to Annexation Ordinance 90-03; THENCE with city of Lebanon, S57°50'00"W, 150.00' to the POINT OF BEGINNING and Containing 2.15 acres more or less, according to a plat by Nathan King, PLS #3831, with KWM Engineering & Land Surveying, on 05/04/2017 titled "PLAT DEPICTING RESOLUTION OF ANNEXATION ORDINANCE #90-03 & #95-06 CITY OF LEBANON" and being the same property described in the Annexation Ordinance 95-06 in the records of the Marion County Clerk's office.

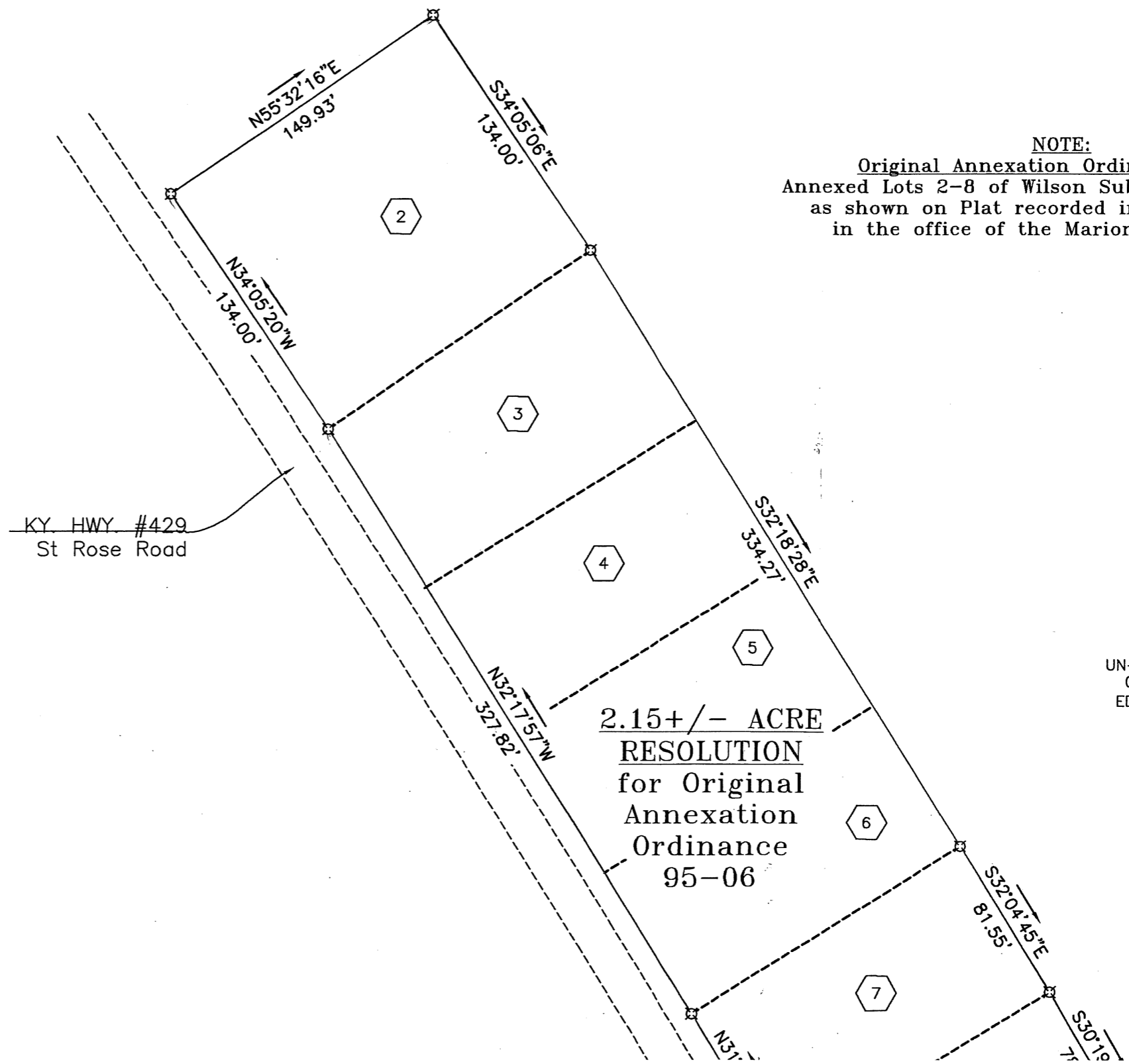


ANNEXATION RESOLUTION PLAT: THIS IS NOT A BOUNDARY SUI



VICINITY MAP N.T.S.

UN-INCORPORATED AREA
OF MARION COUNTY
EDWARD & MARY HILL
DB 143; PG 391

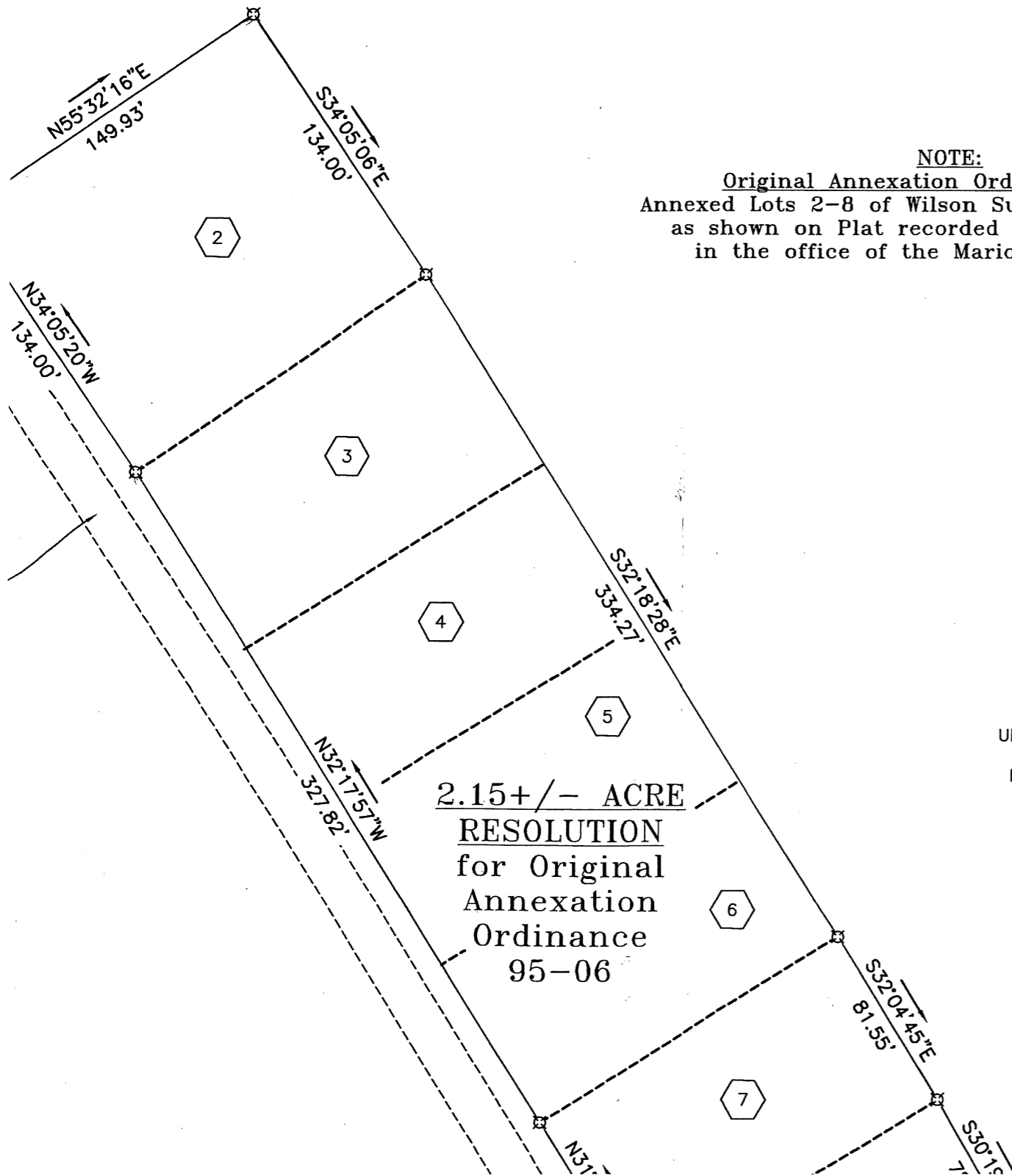


NOTE:
Original Annexation Ordinance 95-06
Annexed Lots 2-8 of Wilson Subdivision: Section A
as shown on Plat recorded in DB 123; PG 94
in the office of the Marion County Clerk

UN-INCORPORATED AREA
OF MARION COUNTY
EDWARD & MARY HILL
DB 143; PG 391

ANNEXATION RESOLUTION PLAT: THIS IS NOT A BOUNDARY SURVEY

UNINCORPORATED AREA
OF MARION COUNTY
EDWARD & MARY HILL
DB 143; PG 391



NOTE:
Original Annexation Ordinance 95-06
Annexed Lots 2-8 of Wilson Subdivision; Section A
as shown on Plat recorded in DB 123; PG 94
in the office of the Marion County Clerk.

UN-INCORPORATED AREA
OF MARION COUNTY
EDWARD & MARY HILL
DB 143; PG 391

UN-INCORPORATED AREA
OF MARION COUNTY
EDWARD & MARY HILL
DB 143; PG 391

UN-INCORPORATED AREA
OF MARION COUNTY

POINT OF BEGINNING
Resolution for Ordinance 95-06

POINT OF BEGINNING
Resolution for Ordinance 90-03

Lee Avenue

2.15+/- ACRE
RESOLUTION
for Original
Annexation
Ordinance
95-06

0.62+/- ACRE
RESOLUTION
for Original
Annexation
Ordinance
90-03

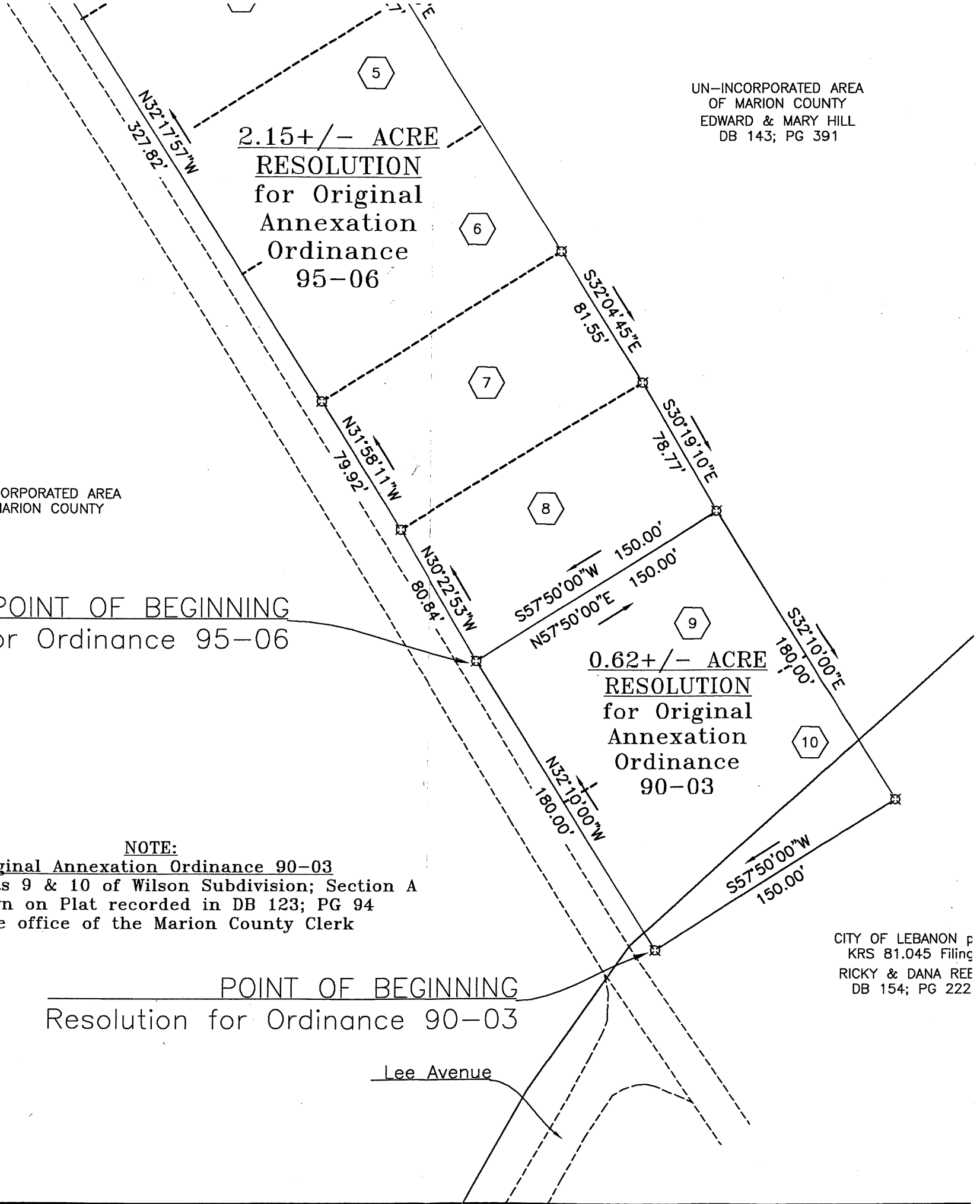
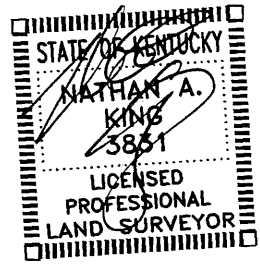
NOTE:
Original Annexation Ordinance 90-03
Annexed Lots 9 & 10 of Wilson Subdivision; Section A
as shown on Plat recorded in DB 123; PG 94
in the office of the Marion County Clerk

CITY OF LEBANON p
KRS 81.045 Filing
RICKY & DANA REE
DB 154; PG 222

SURVEY LEGEND

- ☒ = UNMARKED POINTS
- = ANNEXATION LINES: ORDINANCE 90-03 & 95-06

SURVEYORS CERTIFICATE
I HEREBY CERTIFY THAT THE ANNEXATION MAP SHOWN
HEREON IS A CORRECT DELINEATION OF THE PARCELS TO
BE ANNEXED AND THAT THESE PARCELS ARE CONTIGUOUS
TO THE PRESENT CORPORATE LIMITS OF THE THE CITY OF
LEBANON, KENTUCKY AS PROVIDED BY INFORMATION
SUPPLIED BY THE OFFICE OF THE SECRETARY OF STATE.
I FURTHER CERTIFY THAT THIS MAP WAS PREPARED BY
ME OR BY PERSONS UNDER MY DIRECT PERSONAL
SUPERVISION. THIS IS NOT A BOUNDARY SURVEY AND
THE APPROXIMATE BOUNDARY LINES SHOWN HEREON
WERE DERIVED BY A COMBINATION OF FIELD WORK,
DEEDS OF RECORD, CURRENT AND HISTORICAL AERIAL
IMAGERY AND OLD KYTC HIGHWAY PLANS
Nathan King 6-21-17
NATHAN KING, PLS 3831 DATE



UN-INCORPORATED AREA
OF MARION COUNTY
EDWARD & MARY HILL
DB 143; PG 391

2.15+/- ACRE
RESOLUTION
for Original
Annexation
Ordinance
95-06

0.62+/- ACRE
RESOLUTION
for Original
Annexation
Ordinance
90-03

CITY OF LEBANON per
KRS 81.045 Filing

CITY OF LEBANON per
KRS 81.045 Filing
RICKY & DANA REED
DB 154; PG 222

N-INCORPORATED AREA
OF MARION COUNTY

POINT OF BEGINNING
for Ordinance 95-06

POINT OF BEGINNING
Resolution for Ordinance 90-03

Lee Avenue

NOTE:
Original Annexation Ordinance 90-03
1 Lots 9 & 10 of Wilson Subdivision; Section A
shown on Plat recorded in DB 123; PG 94
in the office of the Marion County Clerk



PLAT DEPICTING RESOLUTION OF
ANNEXATION ORDINANCE #90-03 & #95-06
CITY OF LEBANON

CLIENT
CITY OF LEBANON
115 S. PROCTOR AVE.
LEBANON, KY 40033

MARION COUNTY, KENTUCKY

K W M
LAND SURVEYING & ENGINEERING

NATHAN ALLAN KING
P.E. #24283 P.L.S. #3831
555 MERCER AVE., LEBANON, KY 40033
BUSINESS: (270) 692-0089
MOBILE: (270) 590-4603
kwn.nk@windstream.net

PROJECT: MARION CO/2015/CITY OF LEBANON/0004

SCALE 1" = 60' INCH=FEET	TOTAL AREA 2.77 AC.+/-	DATE 5/4 2017	DRAWN BY N. KING
--------------------------------	------------------------------	---------------------	------------------------

GEODETIC NORTH
AS DETERMINED BY
GPS OBSERVATIONS

