



CITY OF LEBANON

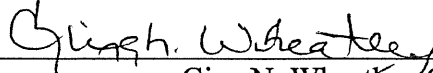
GARY D. CRENSHAW
MAYOR

P.O. BOX 840
LEBANON, KY 40033
TEL. (270) 692-6272
FAX (270) 692-4638

CERTIFICATION

I, the undersigned, being duly appointed, qualified and acting as the City Clerk of the City of Lebanon, Kentucky, hereby certify that the foregoing Resolution No. 2018-09 is a true, correct and accurate copy as duly and lawfully passed by unanimous vote of the Lebanon City Council on the 12th day of November, 2018 all as appears in the official records of said City.

WITNESS, my hand and the City Seal of Lebanon, Kentucky, this 15th day of February, 2019.



Gina N. Wheatley, City Clerk

RECEIVED AND FILED
DATE February 18, 2019

ALISON LUNDERGAN GRIMES
SECRETARY OF STATE
COMMONWEALTH OF KENTUCKY
BY Randie Adkins



CITY OF LEBANON

GARY D. CRENSHAW
MAYOR

P.O. BOX 840
LEBANON, KY 40033
TEL. (270) 692-6272
FAX (270) 692-4638

RESOLUTION 2018-09

A RESOLUTION ADOPTING A MODERN AND ACCURATE LEGAL DESCRIPTION OF TERRITORY PREVIOUSLY ANNEXED BY ORDINANCE 99-08

WHEREAS, the City of Lebanon has enacted numerous ordinances annexing property into the corporate limits of the City of Lebanon; and

WHEREAS, each individual annexation contains a prior survey oft prepared by now unknown individual, and further references documentation that is no longer in existence or is no longer easily ascertainable; and

WHEREAS, the City wishes to provide a modern, accurate, easily identifiable legal description reflecting bearings and coordinates based upon the state plane coordinate system, including relevant GPS and GIS data, same having been certified by a professional land surveyor for each prior annexation; and

WHEREAS, the city wishes to comply with the requirements of Amended KRS 81A.470 effective July, 13, 2004; and

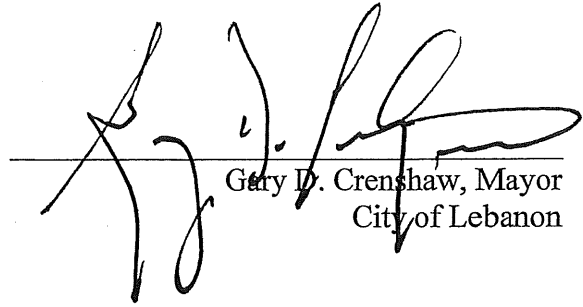
WHEREAS, the City does not intend to amend or replace its prior ordinance annexing, but rather to interpret the defined boundaries of the territory previously annexed and adopt a modern and accurate legal description of territory previously annexed.

NOW THEREFORE, BE IT RESOLVED BY THE CITY COUNCIL OF THE CITY OF LEBANON, KENTUCKY:

SECTION 1. That the City Council of the City of Lebanon hereby adopts the following legal description, and a plat attached hereto as prepared by Nathan King, Licensed Professional Land Surveyor No. 3831 by new survey as an accurate depiction of the property previously annexed into the corporate city limits of the City of Lebanon by Ordinance 99-08 enacted on September 22, 1999, a copy of which is attached hereto as Exhibit "1", and hereby adopts said new legal description and plat as the official legal description and plat to be adopted by the City for all purposes when referencing this prior annexation.

SECTION 2. This new legal description as prepared by Nathan King a Licensed Professional Land Surveyor No.3831 is as follows:

Adopted this 12th day of November, 2018.



Gary D. Crenshaw, Mayor
City of Lebanon

CERTIFICATION

I, the undersigned, Clerk of the City of Lebanon do hereby certify that, the above Resolution 2018-09 is a true and correct copy as was presented to the City Council of the City of Lebanon at their regular meeting dated November 12, 2018.

Given under my hand this 12th day of November, 2018.



Gina N. Wheatley, City Clerk

KWM

ENGINEERING & SURVEYING, LLC

335 N. WOODLAWN AVE., LEBANON, KY 40033

BUSINESS: (270) 692-0089

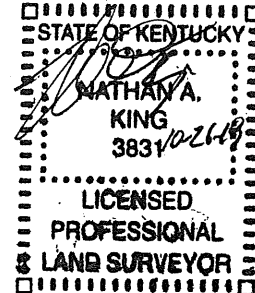
MOBILE: (270) 590-4603

kwm.nk@windstream.net

Lebanon, Kentucky

Resolution for original

Annexation Ordinance 99-08



A certain parcel of land known as the Fred & Stella Marlow Property (DB 92; PG 302) lying along the east side of Ky Hwy 208 (Old Calvary Road) and the north side of Old Hickory Street in Marion County, Kentucky. This parcel of land was Annexed as Ordinance 99-08 as two tracts. Tract I was described as being "Lots 1 and 2 as shown on the Plat of Fred and Stella Marlow Property recorded in Deed Book 92, Page 302", and Tract II was a description of a single lot "containing 5.33 acres, as per plat of record in Deed Book 92, Page 302". Both tracts referred back to the same plat, and make up the entirety of said plat. The entirety of the Annexation is herein described as a single tract located adjacent to the south side of the city of Lebanon per the Original KRS 81.045 filing and being more particularly described as follows:

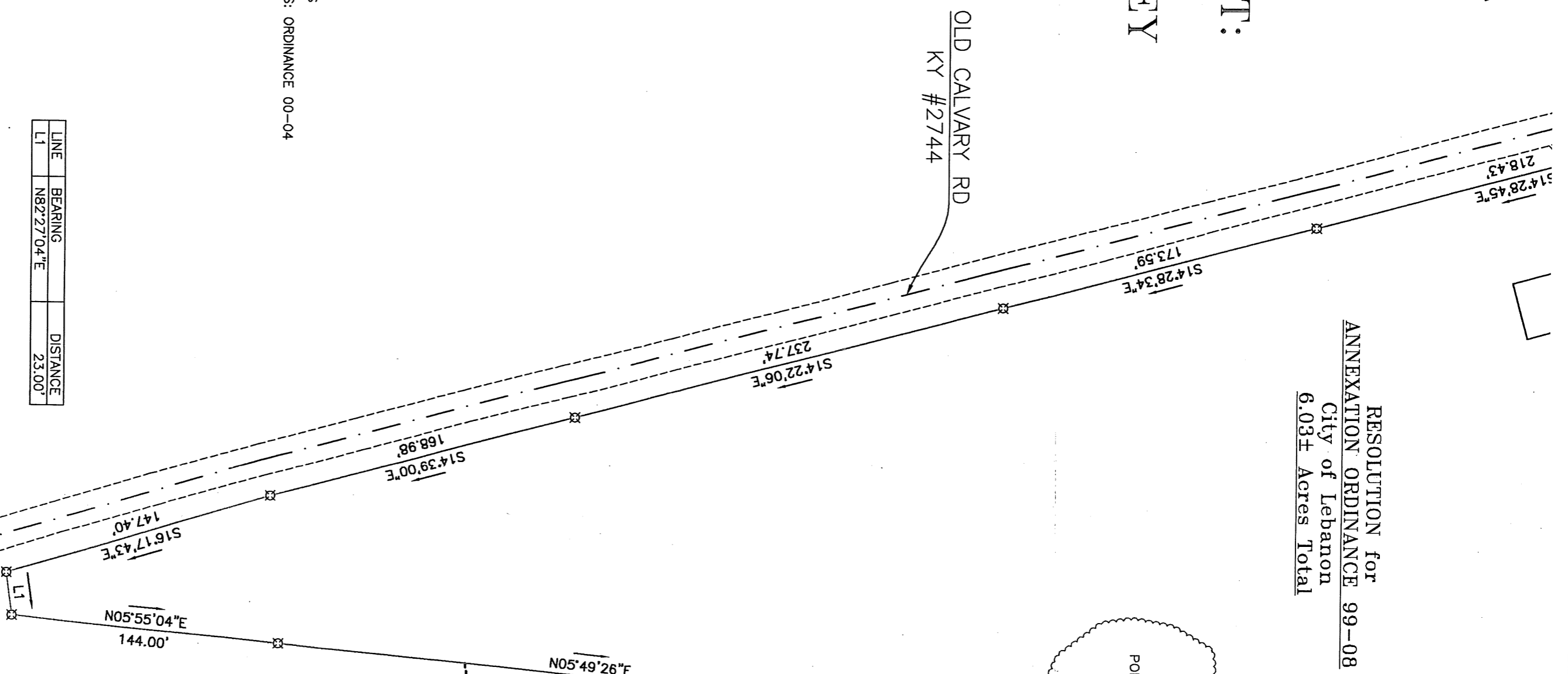
The bearings stated herein are referenced to Geodetic North as determined by GPS observations.

Beginning at a point on the east side of KY Hwy 208, a corner common to the south boundary of the City of Lebanon per the Original KRS 81.045 filing, said corner being approximately 1170' north of the intersection with Old Hickory Street and having coordinates of N:3,723,976.18, E: 5,065,025.09 per SPCS KY 1600; THENCE leaving the City boundary with KY Hwy 208, S14°10'11"E, 86.00' to a point; THENCE with same, S14°10'10"E, 80.00' to a point; THENCE with same, S14°28'45"E, 218.43' to a point; THENCE with same, S14°28'34"E, 173.59' to a point; THENCE with same, S14°22'06"E, 237.74' to a point; THENCE with same, S14°39'00"E, 168.98' to a point; THENCE with same, S16°17'43"E, 147.40' to a point; THENCE leaving Ky Hwy 208 with James & Martha Mattingly (DB 256; PG 286), N82°27'04"E, 23.00' to a point; THENCE with same, N05°55'04"E, 144.00' to a point; THENCE with the Mattingly line and then the Bob C. Martin & Sonia J. Martin Revocable Trust (DB 190; PG 460), N05°49'26"E, 337.09' to a point; THENCE with the Martin line and then the Phillip Abell (DB 292; PG 573) line, N05°55'04"E, 380.00' to a point; THENCE with the Abell line, N05°55'04"E, 338.00' to a point in the south boundary of the city of Lebanon per the Original KRS 81.045 filing, also a corner common to Darrell Allen (DB 292; PG 490); THENCE with the existing City Limit boundary and the Allen line, and then the James & Aileen Thompson line (DB 294; PG 299), S74°19'33"W, 284.46' to a point; THENCE with the Thompson line, S74°19'33"W, 159.67' to the POINT OF BEGINNING and Containing 6.03 acres more or less, according to a plat by Nathan King, PLS #3831, with KWM Engineering & Land Surveying, on 07/05/2017 titled "PLAT DEPICTING RESOLUTION OF ANNEXATION ORDINANCE #99-08 CITY OF LEBANON" and being the same property described in the Annexation Ordinance 99-08 in the records of the Marion County Clerk's office.

UN-INCORPORATED AREA
OF MARION COUNTY

ANNEXATION RESOLUTION PLAT: THIS IS NOT A BOUNDARY SURVEY

RESOLUTION for
City of Lebanon
ANNEXATION ORDINANCE 99-08
6.03± Acres Total



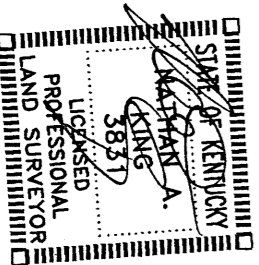
SURVEY LEGEND
⊠ = UNMARKED POINTS
— = ANNEXATION LINES: ORDINANCE 00-04

LINE	BEARING	DISTANCE
L1	N82°27'04\"E	23.00'

SURVEYORS CERTIFICATE

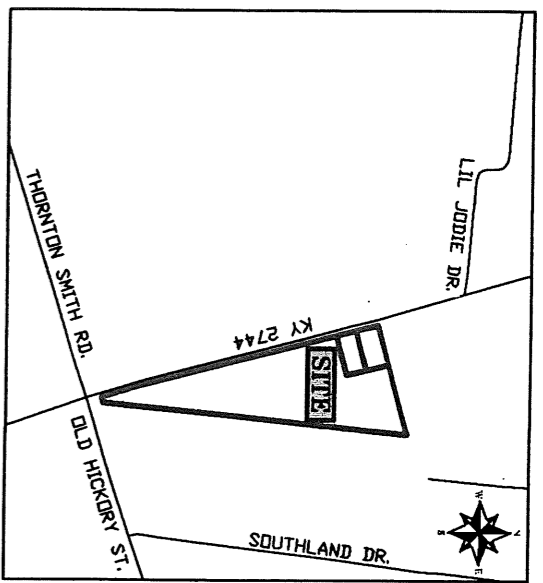
I HEREBY CERTIFY THAT THE ANNEXATION MAP SHOWN HEREON IS A CORRECT DELINEATION OF THE PARCELS TO BE ANNEXED AND THAT THESE PARCELS ARE CONTIGUOUS TO THE PRESENT CORPORATE LIMITS OF THE CITY OF LEBANON, KENTUCKY AS PROVIDED BY INFORMATION SUPPLIED BY THE OFFICE OF THE SECRETARY OF STATE. I FURTHER CERTIFY THAT THIS MAP WAS PREPARED BY ME OR BY PERSONS UNDER MY DIRECT PERSONAL SUPERVISION. THIS IS NOT A BOUNDARY SURVEY AND THE APPROXIMATE BOUNDARY LINES SHOWN HEREON WERE DERIVED BY A COMBINATION OF FIELD WORK, DEEDS OF RECORD, CURRENT AND HISTORICAL AERIAL IMAGERY AND OLD STIC HIGHWAY PLANS.

NATHAN KING, PLS 3831 DATE 10-26-18



THORNTON SMITH RD

POI

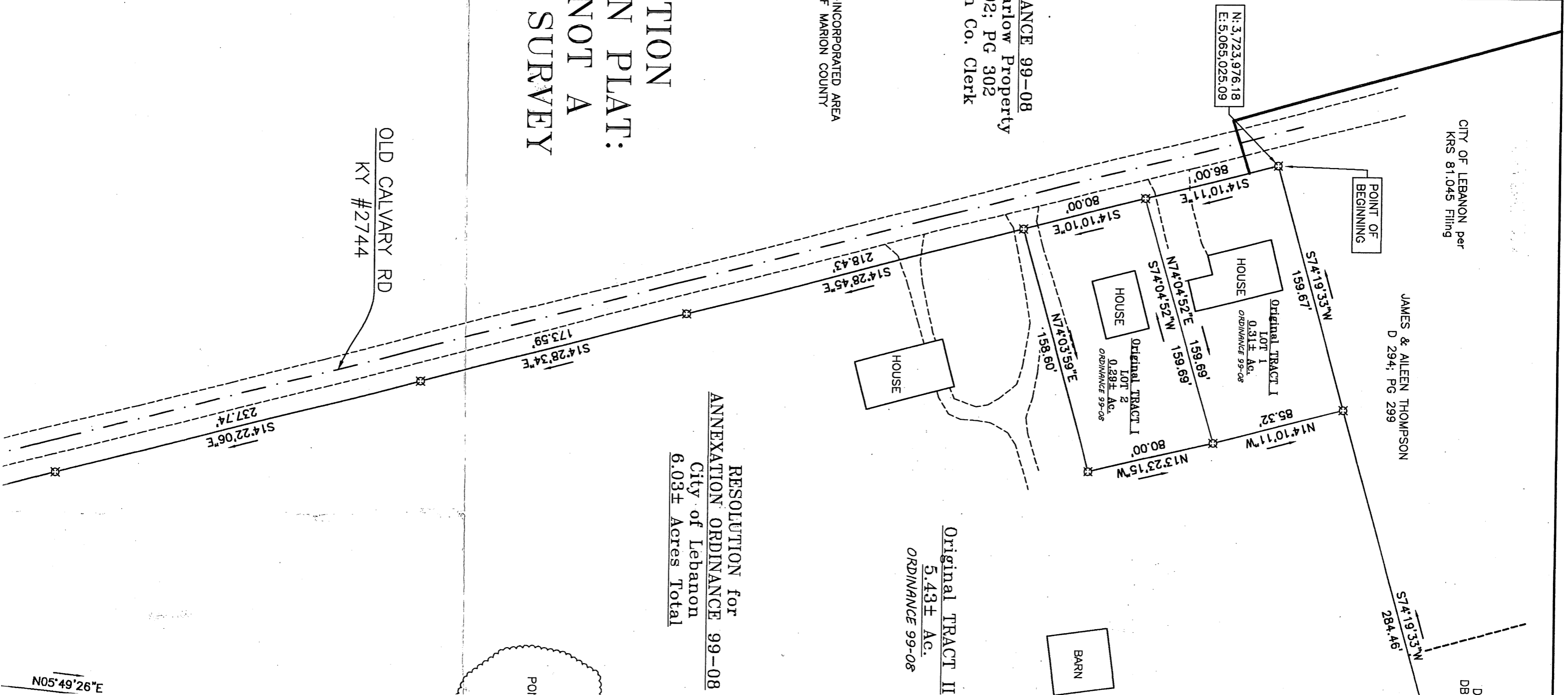


VICINITY MAP N.T.S.

NOTE:
 ORIGINAL ANNEXATION ORDINANCE 99-08
 Annexed the Fred & Stella Marlow Property
 as shown on plat in DB 92; PG 302
 in the office of the Marion Co. Clerk

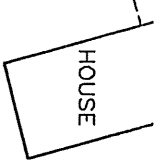
UN-INCORPORATED AREA
 OF MARION COUNTY

ANNEXATION
 RESOLUTION PLAT:
 THIS IS NOT A
 BOUNDARY SURVEY

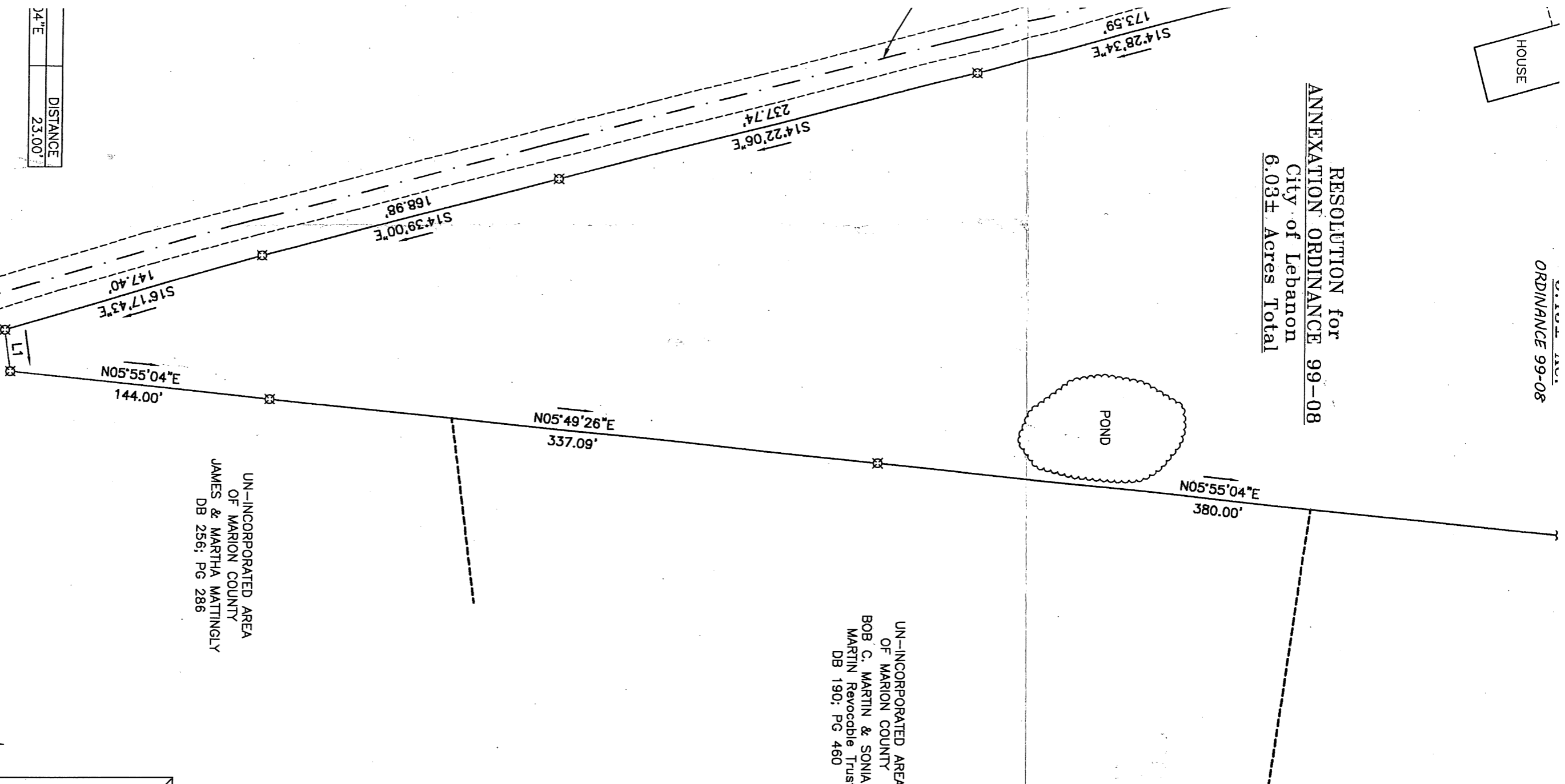


RESOLUTION for
 ANNEXATION ORDINANCE 99-08
 City of Lebanon
 6.03± Acres Total

N05°49'26"E



RESOLUTION for
ANNEXATION ORDINANCE 99-08
City of Lebanon
6.03± Acres Total



UN-INCORPORATED AREA
OF MARION COUNTY
JAMES & MARTHA MATTINGLY
DB 256; PG 286

UN-INCORPORATED AREA
OF MARION COUNTY
BOB C. MARTIN & SONIA J.
MARTIN Revocable Trust
DB 190; PG 460

04"E	DISTANCE
	23.00'

N SMITH RD

OLD HICKORY ST

GEODETIC NORTH
AS DETERMINED BY
GPS OBSERVATIONS



PLAT DEPICTING RESOLUTION OF
ANNEXATION ORDINANCE #99-08
CITY OF LEBANON

CLIENT
CITY OF LEBANON
115 S. PROCTOR AVE.
LEBANON, KY 40033

MARION COUNTY, KENTUCKY

LEBANON OFFICE:
NATHAN ALLAN KING
P.E. #24283 P.L.S. #3831
285 WEST MAIN STREET, STE. 121, LEBANON, KY
BUSINESS: (770) 595-0083
MOBILE: (770) 595-4663
kennrkk@windstream.net

PROJECT: MARION CO/2015/CITY OF LEBANON/0004	TOTAL AREA	DATE	DRAWN BY
SCALE 1" = 60'	8.03 AC. +/-	07/05 2017	N. KING
INCH=FEET			

& AILEEN THOMPSON
D 294; PG 299

S74°19'33"W
284.46'

DARREL ALLEN
DB 292; PG 490

CITY OF LEBANON per
KRS 81.045 Filing

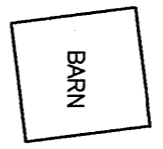
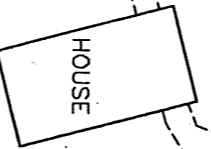
1st TRACT I
LOT I
31± Ac.
VANCE 99-08

159.69'
159.69'

Original TRACT I
LOT 2
0.29± Ac.
ORDINANCE 99-08

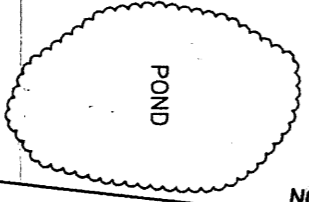
403.59'E
158.60'

N14°10'11"W
85.32'
N13°23'15"W
80.00'



Original TRACT II
5.43± Ac.
ORDINANCE 99-08

RESOLUTION for
ANNEXATION ORDINANCE 99-08
City of Lebanon
6.03± Acres Total



N05°55'04"E
380.00'

N05°55'04"E
338.00'

UN-INCORPORATED AREA
OF MARION COUNTY
PHILLIP ABELL
DB 292; PG 573

UN-INCORPORATED AREA
OF MARION COUNTY
BOB C. MARTIN & SONIA J.
MARTIN Revocable Trust
DB 190; PG 460

S14°22'06"E
237.74'

S14°28'34"E
173.59'

N19°26'E
7.09'