



CITY OF LEBANON

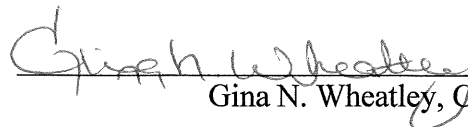
GARY D. CRENSHAW
MAYOR

P.O. BOX 840
LEBANON, KY 40033
TEL. (270) 692-6272
FAX (270) 692-4638

CERTIFICATION

I, the undersigned, being duly appointed, qualified and acting as the City Clerk of the City of Lebanon, Kentucky, hereby certify that the foregoing Resolution No. 2018-10 is a true, correct and accurate copy as duly and lawfully passed by unanimous vote of the Lebanon City Council on the 12th day of November, 2018 all as appears in the official records of said City.

WITNESS, my hand and the City Seal of Lebanon, Kentucky, this 15th day of February, 2019.


Gina N. Wheatley, City Clerk

RECEIVED AND FILED
DATE February 18, 2019

ALISON LUNDERGAN GRIMES
SECRETARY OF STATE
COMMONWEALTH OF KENTUCKY
BY Hardie Adkinson



CITY OF LEBANON

GARY D. CRENSHAW
MAYOR

P.O. BOX 840
LEBANON, KY 40033
TEL. (270) 692-6272
FAX (270) 692-4638

RESOLUTION 2018-10

A RESOLUTION ADOPTING A MODERN AND ACCURATE LEGAL DESCRIPTION OF TERRITORY PREVIOUSLY ANNEXED BY ORDINANCE 00-04

WHEREAS, the City of Lebanon has enacted numerous ordinances annexing property into the corporate limits of the City of Lebanon; and

WHEREAS, each individual annexation contains a prior survey oft prepared by now unknown individual, and further references documentation that is no longer in existence or is no longer easily ascertainable; and

WHEREAS, the City wishes to provide a modern, accurate, easily identifiable legal description reflecting bearings and coordinates based upon the state plane coordinate system, including relevant GPS and GIS data, same having been certified by a professional land surveyor for each prior annexation; and

WHEREAS, the city wishes to comply with the requirements of Amended KRS 81A.470 effective July, 13, 2004; and

WHEREAS, the City does not intend to amend or replace its prior ordinance annexing, but rather to interpret the defined boundaries of the territory previously annexed and adopt a modern and accurate legal description of territory previously annexed.

NOW THEREFORE, BE IT RESOLVED BY THE CITY COUNCIL OF THE CITY OF LEBANON, KENTUCKY:

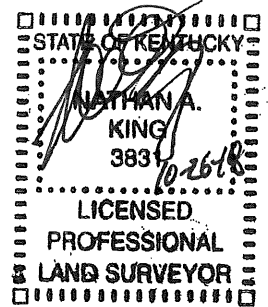
SECTION 1. That the City Council of the City of Lebanon hereby adopts the following legal description, and a plat attached hereto as prepared by Nathan King, Licensed Professional Land Surveyor No. 3831 by new survey as an accurate depiction of the property previously annexed into the corporate city limits of the City of Lebanon by Ordinance 00-04 enacted on January 17, 2001, a copy of which is attached hereto as Exhibit "1", and hereby adopts said new legal description and plat as the official legal description and plat to be adopted by the City for all purposes when referencing this prior annexation.

SECTION 2. This new legal description as prepared by Nathan King a Licensed Professional Land Surveyor No.3831 is as follows:

KWM

ENGINEERING & SURVEYING, LLC

335 N. WOODLAWN AVE., LEBANON, KY 40033
BUSINESS: (270) 692-0089
MOBILE: (270) 590-4603
kwm.nk@windstream.net



Lebanon, Kentucky Resolution for original Annexation Ordinance 00-04

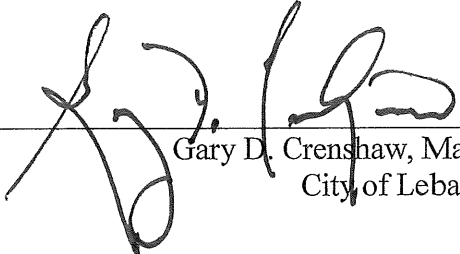
Description of a **103.93 +/- Acre** tract located in the State of Kentucky, County of Marion & located adjacent to the city of Lebanon, along a north boundary of the Original 81.045 filing boundary and along the south boundary of **Ordinance 01-02**, and lying to the north of the old railroad bed and to the south of **KY Highway 49**. This Description is for the corresponding plat titled "Plat Depicting Resolution of Annexation Ordinance 00-04 City of Lebanon", by Nathan King, KWM Engineering & Land Surveying.

Beginning at a point at the northeast corner of Ordinance 96-01, also being a corner common to the Marion County Detention Center property (DB 183; PG 591) and David & Florence Daugherty (DB 321; PG 227), said point having a coordinate of N:3,730,189.16, E:5,060,981.60 based on the SPCS KY 1600; THENCE leaving Ordinance 96-01 along the Daugherty line, then the line of David & Florence Daugherty (DB 198; PG 284) and an un-incorporated area of Marion County, **N05°41'24"E, 1814.07'** to a point, a corner common to Exception #2 of Ordinance 00-04; THENCE with said exception, **N87°32'11"W, 99.05'** to a point, a corner common to Exception #3 of said Ordinance; THENCE with said exception, **S81°57'49"W, 344.20'** to a point; THENCE with same, **N00°02'11"W, 360.31'** to a point; THENCE with same, **N89°00'18"E, 15.01'** to a point; THENCE with same, **N75°41'59"E, 100.50'** to a point; THENCE with same, **N83°36'00"E, 146.12'** to a point; THENCE with same, **N83°14'47"E, 97.74'** to a point; THENCE with same, along a curve turning to the right, with an arc length of **27.65'**, with a radius of **1243.24'**, with a chord bearing of **S87°59'55"E**, with a chord length of **27.65'** to a point; THENCE with Exception #2 of Ordinance 00-04, along a curve turning to the right, with an arc length of **47.59'**, with a radius of **1243.24'**, with a chord bearing of **S86°15'53"E**, with a chord length of **47.59'** to a point; THENCE with Exception #1 of Ordinance 00-04, along a curve turning to the right, with an arc length of **49.96'**, with a radius of **1243.24'**, with a chord bearing of **S84°01'01"E**, with a chord length of **49.95'** to a point; THENCE crossing to the center of the old alignment of KY Hwy 49, **N06°12'29"E, 63.89'** to a point; THENCE with the old alignment of KY Hwy 49 and the south boundary of Ordinance 01-02 of the city of Lebanon, along a curve turning to the left with an arc length of 96.35', with a radius of 300.00', with a chord bearing of **N89°24'52"W**, with a chord length of **95.93'** to a

point; THENCE with same, S81°23'06"W, 1369.94' to a point; THENCE with same, along a curve turning to the right with an arc length of 242.50', with a radius of 2864.79', with a chord bearing of S83°48'36"W, 242.43' to a point; THENCE with same, S86°14'06"W, 623.06' to a point, a corner common to Phillip George, et. al. (DB 177; PG 647); THENCE leaving the boundary of adjacent Ordinance 01-02 with the George line, S02°54'16"E, 54.73' to a point, a corner common to Exception #9 of Ordinance 00-04; THENCE with said Exception, N86°15'37"E, 248.97' to a point; THENCE with same, N77°43'46"E, 101.12' to a point; THENCE with same, N86°15'37"E, 13.48' to a point; THENCE N86°15'37"E, 55.48' to a point, a corner common to Exception #5 of Ordinance 00-04; THENCE with said Exception, N86°13'46"E, 209.27' to a point, a corner common to Exception #6 of Ordinance 00-04; THENCE with said Exception, N83°50'58"E, 236.35' to a point, a corner common to Exception #4 of Ordinance 00-04; THENCE with said Exception, N81°24'40"E, 210.24' to a point; THENCE with same, S08°24'00"E, 211.44' to a point, a corner common to Exception #11 of Ordinance 00-04; THENCE with said Exception, S08°16'44"E, 20.00' to a point; THENCE with same, S81°36'00"W, 209.49' to a point, a corner common to Exception #8 of Ordinance 00-04; THENCE with said Exception, S80°09'53"W, 262.07' to a point, a corner common to Exception #7 of Ordinance 00-04; THENCE, with said Exception, S88°25'52"W, 215.60' to a point; THENCE with same, N01°04'08"W, 20.00' to a point, a corner common to Exception #5 of Ordinance 00-04; THENCE with said Exception, N01°04'08"W, 219.80' to a point; THENCE S86°15'37"W, 55.48' to a point, a corner common to Exception #9 of Ordinance 00-04; THENCE with said Exception, S01°59'26"E, 223.79' to a point; THENCE with same, S84°41'14"W, 358.94' to a point in the line of said George; THENCE with the George line, S02°44'56"E, 717.15' to a point; THENCE with same, S09°28'03"E, 605.88' to a point; THENCE S10°01'57"W, 605.88' to a point in the line of the City of Lebanon (DB 163; PG 49); THENCE with the City of Lebanon, S80°01'01"E, 803.07' to a point; THENCE with same and then the City Limits of Lebanon per KRS 81.045 filing, along a curve turning to the left, with an arc length of 387.09', with a radius of 3201.22', with a chord bearing of S82°35'46" E, with a chord length of 386.85' to a point; THENCE with same, along a curve turning to the left, with an arc length of 230.72', with a radius of 2701.60', with a chord bearing of S88°18'37" E, with a chord length of 230.65', to a point at the corner of the city of Lebanon Ordinance 96-01 and said Marion County Detention Center; THENCE with Ordinance 96-01 and the Marion County Detention property, N00°12'36"E, 336.90' to a point; THENCE with same, N82°24'31"E, 643.89' to the POINT OF BEGINNING and Containing 103.93 +/- acres, as shown on plat by Nathan King, PLS #3831, with KWM Engineering & Land Surveying, on 07/05/2017 titled "PLAT DEPICTING RESOLUTION OF ANNEXATION ORDINANCE #00-04 CITY OF LEBANON" and being the same property described in the Annexation Ordinance 00-04 in the records of the Marion County Clerk's office.

STATE OF KENTUCKY
 NATHAN A.
 KING
 3831
 10-26-18
 LICENSED
 PROFESSIONAL
 LAND SURVEYOR

Adopted this 12th day of November, 2018.



Gary D. Crenshaw, Mayor
City of Lebanon

CERTIFICATION

I, the undersigned, Clerk of the City of Lebanon do hereby certify that, the above Resolution 2018-10 is a true and correct copy as was presented to the City Council of the City of Lebanon at their regular meeting dated November 12, 2018.

Given under my hand this 12th day of November, 2018.



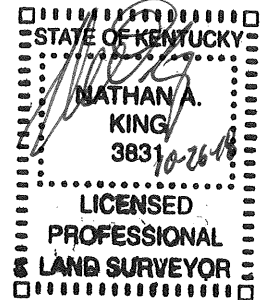
Gina N. Wheatley, City Clerk



ENGINEERING & SURVEYING, LLC

335 N. WOODLAWN AVE., LEBANON, KY 40033
BUSINESS: (270) 692-0089
MOBILE: (270) 590-4603
kwm.nk@windstream.net

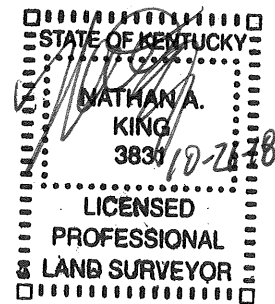
Lebanon, Kentucky Resolution for original Annexation Ordinance 00-04



Description of a **103.93 +/- Acre** tract located in the State of Kentucky, County of Marion & located adjacent to the city of Lebanon, along a north boundary of the Original 81.045 filing boundary and along the south boundary of **Ordinance 01-02**, and lying to the north of the old railroad bed and to the south of **KY Highway 49**. This Description is for the corresponding plat titled "Plat Depicting Resolution of Annexation Ordinance 00-04 City of Lebanon", by Nathan King, KWM Engineering & Land Surveying.

Beginning at a point at the northeast corner of Ordinance 96-01, also being a corner common to the Marion County Detention Center property (DB 183; PG 591) and David & Florence Daugherty (DB 321; PG 227), said point having a coordinate of N:3,730,189.16, E:5,060,981.60 based on the SPCS KY 1600; THENCE leaving Ordinance 96-01 along the Daugherty line, then the line of David & Florence Daugherty (DB 198; PG 284) and an un-incorporated area of Marion County, **N05°41'24"E, 1814.07'** to a point, a corner common to Exception #2 of Ordinance 00-04; THENCE with said exception, **N87°32'11"W, 99.05'** to a point, a corner common to Exception #3 of said Ordinance; THENCE with said exception, **S81°57'49"W, 344.20'** to a point; THENCE with same, **N00°02'11"W, 360.31'** to a point; THENCE with same, **N89°00'18"E, 15.01'** to a point; THENCE with same, **N75°41'59"E, 100.50'** to a point; THENCE with same, **N83°36'00"E, 146.12'** to a point; THENCE with same, **N83°14'47"E, 97.74'** to a point; THENCE with same, along a curve turning to the right, with an arc length of **27.65'**, with a radius of **1243.24'**, with a chord bearing of **S87°59'55"E**, with a chord length of **27.65'** to a point; THENCE with Exception #2 of Ordinance 00-04, along a curve turning to the right, with an arc length of **47.59'**, with a radius of **1243.24'**, with a chord bearing of **S86°15'53"E**, with a chord length of **47.59'** to a point; THENCE with Exception #1 of Ordinance 00-04, along a curve turning to the right, with an arc length of **49.96'**, with a radius of **1243.24'**, with a chord bearing of **S84°01'01"E**, with a chord length of **49.95'** to a point; THENCE crossing to the center of the old alignment of KY Hwy 49, **N06°12'29"E, 63.89'** to a point; THENCE with the old alignment of KY Hwy 49 and the south boundary of Ordinance 01-02 of the city of Lebanon, along a curve turning to the left with an arc length of 96.35', with a radius of 300.00', with a chord bearing of **N89°24'52"W**, with a chord length of **95.93'** to a

point; THENCE with same, S81°23'06"W, 1369.94' to a point; THENCE with same, along a curve turning to the right with an arc length of 242.50', with a radius of 2864.79', with a chord bearing of S83°48'36"W, 242.43' to a point; THENCE with same, S86°14'06"W, 623.06' to a point, a corner common to Phillip George, et. al. (DB 177; PG 647); THENCE leaving the boundary of adjacent Ordinance 01-02 with the George line, S02°54'16"E, 54.73' to a point, a corner common to Exception #9 of Ordinance 00-04; THENCE with said Exception, N86°15'37"E, 248.97' to a point; THENCE with same, N77°43'46"E, 101.12' to a point; THENCE with same, N86°15'37"E, 13.48' to a point; THENCE N86°15'37"E, 55.48' to a point, a corner common to Exception #5 of Ordinance 00-04; THENCE with said Exception, N86°13'46"E, 209.27' to a point, a corner common to Exception #6 of Ordinance 00-04; THENCE with said Exception, N83°50'58"E, 236.35' to a point, a corner common to Exception #4 of Ordinance 00-04; THENCE with said Exception, N81°24'40"E, 210.24' to a point; THENCE with same, S08°24'00"E, 211.44' to a point, a corner common to Exception #11 of Ordinance 00-04; THENCE with said Exception, S08°16'44"E, 20.00' to a point; THENCE with same, S81°36'00"W, 209.49' to a point, a corner common to Exception #8 of Ordinance 00-04; THENCE with said Exception, S80°09'53"W, 262.07' to a point, a corner common to Exception #7 of Ordinance 00-04; THENCE, with said Exception, S88°25'52"W, 215.60' to a point; THENCE with same, N01°04'08"W, 20.00' to a point, a corner common to Exception #5 of Ordinance 00-04; THENCE with said Exception, N01°04'08"W, 219.80' to a point; THENCE S86°15'37"W, 55.48' to a point, a corner common to Exception #9 of Ordinance 00-04; THENCE with said Exception, S01°59'26"E, 223.79' to a point; THENCE with same, S84°41'14"W, 358.94' to a point in the line of said George; THENCE with the George line, S02°44'56"E, 717.15' to a point; THENCE with same, S09°28'03"E, 605.88' to a point; THENCE S10°01'57"W, 605.88' to a point in the line of the City of Lebanon (DB 163; PG 49); THENCE with the City of Lebanon, S80°01'01"E, 803.07' to a point; THENCE with same and then the City Limits of Lebanon per KRS 81.045 filing, along a curve turning to the left, with an arc length of 387.09', with a radius of 3201.22', with a chord bearing of S82°35'46" E, with a chord length of 386.85' to a point; THENCE with same, along a curve turning to the left, with an arc length of 230.72', with a radius of 2701.60', with a chord bearing of S88°18'37" E, with a chord length of 230.65', to a point at the corner of the city of Lebanon Ordinance 96-01 and said Marion County Detention Center; THENCE with Ordinance 96-01 and the Marion County Detention property, N00°12'36"E, 336.90' to a point; THENCE with same, N82°24'31"E, 643.89' to the POINT OF BEGINNING and Containing **103.93 +/- acres**, as shown on plat by Nathan King, PLS #3831, with KWM Engineering & Land Surveying, on 07/05/2017 titled "PLAT DEPICTING RESOLUTION OF ANNEXATION ORDINANCE #00-04 CITY OF LEBANON" and being the same property described in the Annexation Ordinance 00-04 in the records of the Marion County Clerk's office.



ANNEXATION RESOLUTION PLAT: THIS IS NOT A BOUNDARY

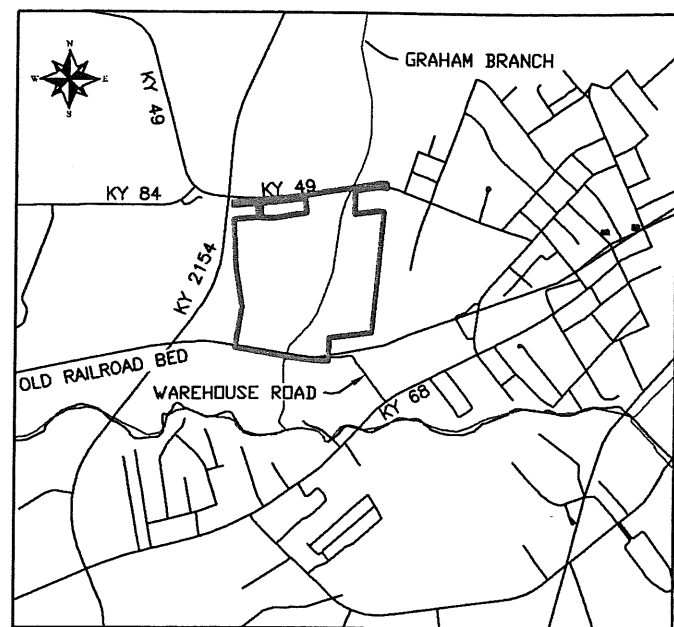
NOTE:
ORIGINAL ANNEXATION ORDINANCE 00-04
 Annexed the remainder of the
 Joseph Gerald & Mollie Kay Hamilton
 property as shown in the Marion County
 Clerk's office in Deed Book 84; PG 632

THE MARION COUNTY INDUSTRIAL
 FOUNDATION, INC.
 DB 212; PG 16

CITY OF LEBANON per
 ORDINANCE 01-02

TIE LINE:

S81°23'06"W 1369.94'



VICINITY MAP N.T.S.

KY. HWY. #2154
 Lebanon ByPass

KY. HWY. #49

UN-INCORPORATED AREA
 OF MARION COUNTY

SURVEY LEGEND

- = UNMARKED POINTS
- = ANNEXATION LINES: ORDINANCE 00-04
- = EXCEPTIONS TO ANNEXATION
- = CITY OF LEBANON EXISTING PERIMETER

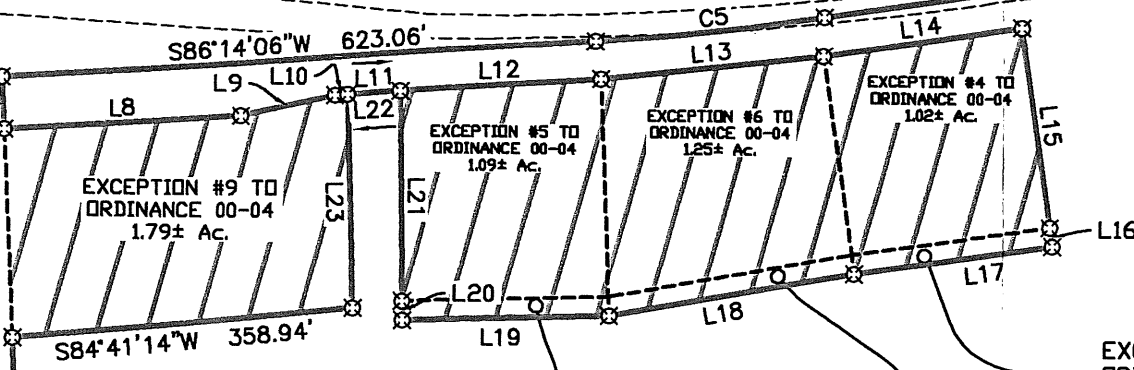
| CURVE | RADIUS | ARC LENGTH | CHORD LENGTH | CHORD BEARING |
|-------|----------|------------|--------------|---------------|
| C1 | 1243.24' | 27.65' | 27.65' | S87°59'55"E |
| C2 | 1243.24' | 47.59' | 47.59' | S86°15'53"E |
| C3 | 1243.24' | 49.96' | 49.95' | S84°01'01"E |
| C4 | 300.00' | 96.35' | 95.93' | N89°24'52"W |
| C5 | 2864.79' | 242.50' | 242.43' | S83°48'36"W |
| C6 | 3201.22' | 387.09' | 386.85' | S82°35'46"E |
| C7 | 2701.60' | 230.72' | 230.65' | S88°18'37"E |

| LINE | BEARING | DISTANCE |
|------|-------------|----------|
| L1 | N87°32'11"W | 99.05' |
| L2 | N89°00'18"E | 15.01' |
| L3 | N75°41'59"E | 100.50' |
| L4 | N83°36'00"E | 146.12' |
| L5 | N83°14'47"E | 97.74' |
| L6 | N06°12'29"E | 63.89' |
| L7 | S02°54'16"E | 54.73' |
| L8 | N86°15'37"E | 248.97' |
| L9 | N77°43'46"E | 101.12' |
| L10 | N86°15'37"E | 13.48' |
| L11 | N86°15'37"E | 55.48' |
| L12 | N86°13'46"E | 209.27' |
| L13 | N83°50'58"E | 236.35' |
| L14 | N81°24'40"E | 210.24' |
| L15 | S08°24'00"E | 211.44' |

KY. HWY. #2154
 Lebanon ByPass

S02°44'56"E 717.15'

S09°28'03"E 605.8



S86°14'06"W 623.06'

S84°41'14"W 358.94'

L8 L9 L10 L11 L12 L13 L14

L15 L16 L17 L18 L19

L20 L21 L22 L23

L24 L25

L26 L27

L28 L29

L30 L31

L32 L33

L34 L35

L36 L37

L38 L39

L40 L41

L42 L43

L44 L45

L46 L47

L48 L49

L50 L51

L52 L53

L54 L55

L56 L57

L58 L59

L60 L61

L62 L63

L64 L65

L66 L67

L68 L69

L70 L71

L72 L73

L74 L75

L76 L77

L78 L79

L80 L81

EXCEPTION #7 TO
 ORDINANCE 00-04
 0.10± Ac.

EXCEPTION #8 TO
 ORDINANCE 00-04
 0.12± Ac.

EXCEPTION #9 TO
 ORDINANCE 00-04
 1.79± Ac.

EXCEPTION #5 TO
 ORDINANCE 00-04
 1.09± Ac.

EXCEPTION #6 TO
 ORDINANCE 00-04
 1.25± Ac.

EXCEPTION #4 TO
 ORDINANCE 00-04
 1.02± Ac.

EXCEPTION #11 TO
 ORDINANCE 00-04
 0.10± Ac.

Original EXHIBIT A
 118.22± AC. TRACT
 LESS 14.29± AC. IN 11 EXCEPTIONS
 EQUALS 103.93± AC. TOTAL ANNEXED
 PER ORDINANCE 00-04

103.93+/- ACRE RESOLUTION
 for Original Annexation
 Ordinance 00-04

EXATION RESOLUTION PLAT: THIS IS NOT A BOUNDARY SURVEY

NOTE:

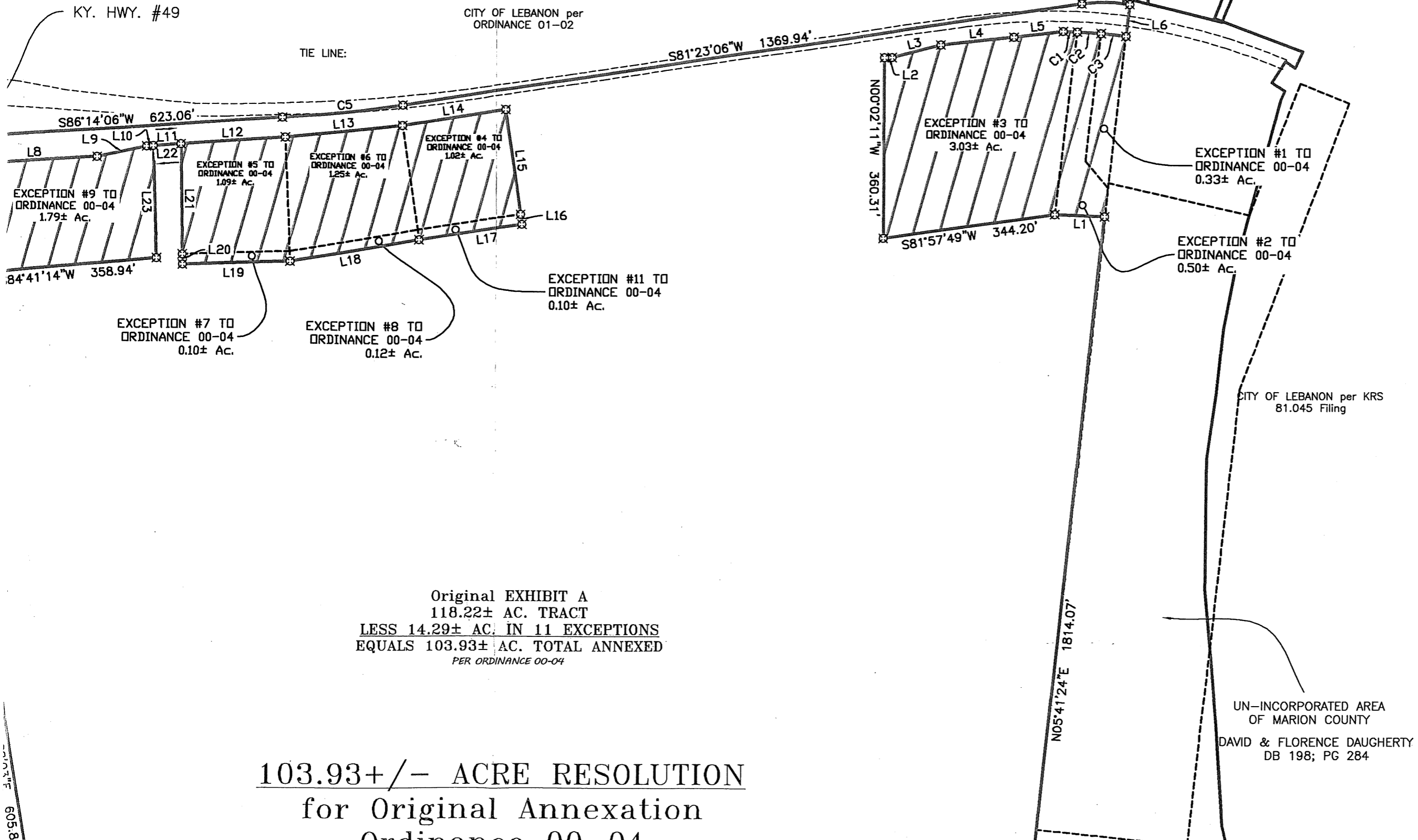
ORIGINAL ANNEXATION ORDINANCE 00-04
 Annexed the remainder of the
 Joseph Gerald & Mollie Kay Hamilton
 property as shown in the Marion County
 Clerk's office in Deed Book 84; PG 632

THE MARION COUNTY INDUSTRIAL
 FOUNDATION, INC.
 DB 212; PG 16

CITY OF LEBANON per
 ORDINANCE 01-02

CITY OF LEBANON per
 ORDINANCE 01-02

CITY OF LEBANON per KRS
 81.045 Filing



Original EXHIBIT A
 118.22± AC. TRACT
 LESS 14.29± AC. IN 11 EXCEPTIONS
 EQUALS 103.93± AC. TOTAL ANNEXED
 PER ORDINANCE 00-04

103.93+/- ACRE RESOLUTION
for Original Annexation
Ordinance 00-04

605.8

| CURVE | RADIUS | ARC LENGTH | CHORD LENGTH | CHORD BEARING |
|-------|----------|------------|--------------|---------------|
| C1 | 1243.24' | 27.65' | 27.65' | S87°59'55"E |
| C2 | 1243.24' | 47.59' | 47.59' | S86°15'53"E |
| C3 | 1243.24' | 49.96' | 49.95' | S84°01'01"E |
| C4 | 300.00' | 96.35' | 95.93' | N89°24'52"W |
| C5 | 2864.79' | 242.50' | 242.43' | S83°48'36"W |
| C6 | 3201.22' | 387.09' | 386.85' | S82°35'46"E |
| C7 | 2701.60' | 230.72' | 230.65' | S88°18'37"E |

| LINE | BEARING | DISTANCE |
|------|-------------|----------|
| L1 | N87°32'11"W | 99.05' |
| L2 | N89°00'18"E | 15.01' |
| L3 | N75°41'59"E | 100.50' |
| L4 | N83°36'00"E | 146.12' |
| L5 | N83°14'47"E | 97.74' |
| L6 | N06°12'29"E | 63.89' |
| L7 | S02°54'16"E | 54.73' |
| L8 | N86°15'37"E | 248.97' |
| L9 | N77°43'46"E | 101.12' |
| L10 | N86°15'37"E | 13.48' |
| L11 | N86°15'37"E | 55.48' |
| L12 | N86°13'46"E | 209.27' |
| L13 | N83°50'58"E | 236.35' |
| L14 | N81°24'40"E | 210.24' |
| L15 | S08°24'00"E | 211.44' |
| L16 | S08°16'44"E | 20.00' |
| L17 | S81°36'00"W | 209.49' |
| L18 | S80°09'53"W | 262.07' |
| L19 | S88°25'52"W | 215.60' |
| L20 | N01°04'08"W | 20.00' |
| L21 | N01°04'08"W | 219.80' |
| L22 | S86°15'37"W | 55.48' |
| L23 | S01°59'26"E | 223.79' |

KY. HWY. #2154
Lebanon ByPass

UN-INCORPORATED AREA
OF MARION COUNTY
PHILLIP GEORGE, ET AL
DB 177; PG 647

KY SINGLE ZONE (1600)
N:3,729,952.61
E:5,058,938.22

CITY OF LEBANON per KRS
81.045 Filing

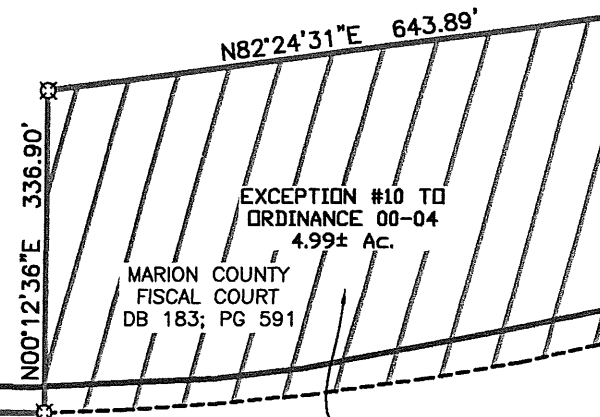
CITY OF LEBANON
DB 163; PG 49

CITY OF LEBANON per KRS
81.045 Filing

CITY OF LEBANON per
ORDINANCE 96-01

Original EXHIBIT A
118.22± AC. TRACT
LESS 14.29± AC. IN 11 EXCEPTIONS
EQUALS 103.93± AC. TOTAL ANNEXED
PER ORDINANCE 00-04

103.93+/- ACRE RESOLUTION for Original Annexation Ordinance 00-04



SURVEYORS CERTIFICATE

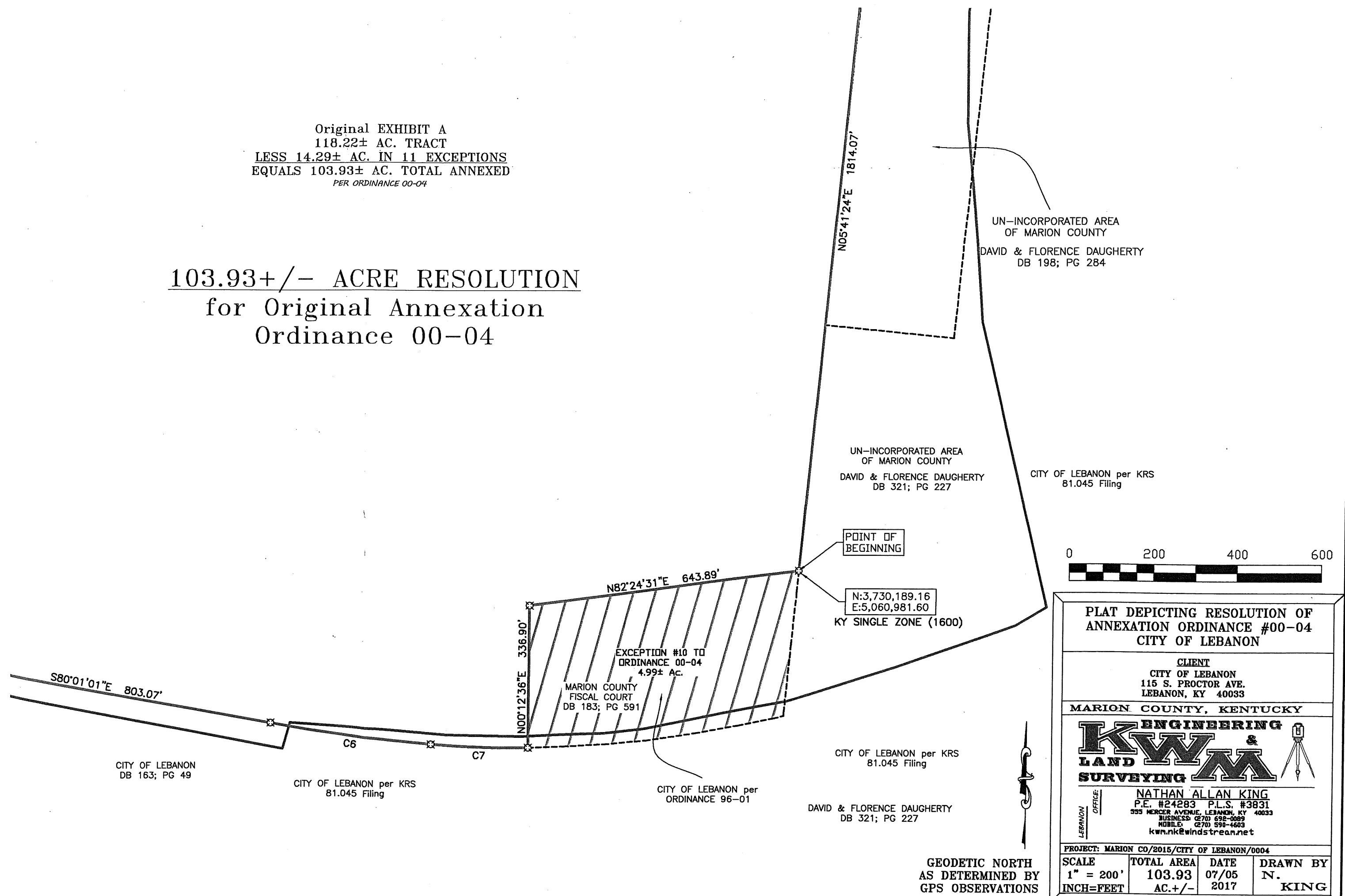
I HEREBY CERTIFY THAT THE ANNEXATION MAP SHOWN HEREON IS A CORRECT DELINEATION OF THE PARCELS TO BE ANNEXED AND THAT THESE PARCELS ARE CONTIGUOUS TO THE PRESENT CORPORATE LIMITS OF THE THE CITY OF LEBANON, KENTUCKY AS PROVIDED BY INFORMATION SUPPLIED BY THE OFFICE OF THE SECRETARY OF STATE. I FURTHER CERTIFY THAT THIS MAP WAS PREPARED BY ME OR BY PERSONS UNDER MY DIRECT PERSONAL SUPERVISION. THIS IS NOT A BOUNDARY SURVEY AND THE APPROXIMATE BOUNDARY LINES SHOWN HEREON WERE DERIVED BY A COMBINATION OF FIELD WORK, DEEDS OF RECORD, CURRENT AND HISTORICAL AERIAL IMAGERY AND OLD KYTC HIGHWAY PLANS

STATE OF KENTUCKY
NATHAN A. KING
3831
LICENSED PROFESSIONAL LAND SURVEYOR

Nathan King
NATHAN KING BLS 3831
10-26-18
DATE

Original EXHIBIT A
 118.22± AC. TRACT
 LESS 14.29± AC. IN 11 EXCEPTIONS
 EQUALS 103.93± AC. TOTAL ANNEXED
 PER ORDINANCE 00-04

103.93+/- ACRE RESOLUTION
 for Original Annexation
 Ordinance 00-04



PLAT DEPICTING RESOLUTION OF ANNEXATION ORDINANCE #00-04 CITY OF LEBANON

CLIENT
 CITY OF LEBANON
 115 S. PROCTOR AVE.
 LEBANON, KY 40033

MARION COUNTY, KENTUCKY

K W M
 &
LAND SURVEYING

NATHAN ALLAN KING
 P.E. #24283 P.L.S. #3831
 555 MERCER AVENUE, LEBANON, KY 40033
 BUSINESS (270) 692-0089
 MOBILE (270) 590-4603
 kwn.nk@windstream.net

PROJECT: MARION CO/2015/CITY OF LEBANON/0004

| | | | |
|---------------------------------|--------------------------------|-----------------------|------------------------|
| SCALE 1" = 200' INCH=FEET | TOTAL AREA 103.93 AC.+/- | DATE 07/05 2017 | DRAWN BY N. KING |
|---------------------------------|--------------------------------|-----------------------|------------------------|

GEODETIC NORTH
 AS DETERMINED BY
 GPS OBSERVATIONS