

RECEIVED AND FILED
DATE March 28, 2019

RESOLUTION 2019-03

ALISON LUNDERGAN GRIMES
SECRETARY OF STATE
COMMONWEALTH OF KENTUCKY
LEGAL By - Handwritten
Adkinson

A RESOLUTION ADOPTING A MODERN AND ACCURATE LEGAL DESCRIPTION OF TERRITORY PREVIOUSLY ANNEXED BY ORDINANCE 2012-04

WHEREAS, the City of Lebanon has enacted numerous ordinances annexing property into the corporate limits of the City of Lebanon; and

WHEREAS, each individual annexation contains a prior survey oft prepared by now unknown individual, and further references documentation that is no longer in existence or is no longer easily ascertainable; and

WHEREAS, the City wishes to provide a modern, accurate, easily identifiable legal description reflecting bearings and coordinates based upon the state plane coordinate system, including relevant GPS and GIS data, same having been certified by a professional land surveyor for each prior annexation; and

WHEREAS, the city wishes to comply with the requirements of Amended KRS 81A.470 effective July, 2004; and

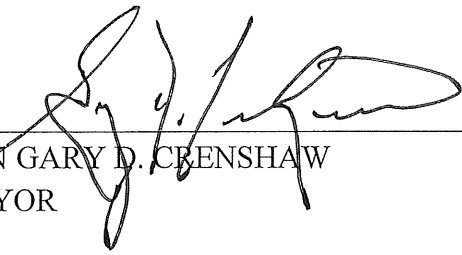
WHEREAS, the City does not intend to amend or replace its prior ordinance annexing, but rather to interpret the defined boundaries of the territory previously annexed and adopt a modern and accurate legal description of territory previously annexed.

NOW THEREFORE, BE IT RESOLVED BY THE CITY COUNCIL OF THE CITY OF LEBANON, KENTUCKY:

SECTION 1. That the City Council of the City of Lebanon hereby adopts the following legal description, and a plat attached hereto as prepared by Nathan King, Licensed Professional Land Surveyor No. 3831 by new survey as an accurate depiction of the property previously annexed into the corporate city limits of the City of Lebanon by Ordinance 2012-04 enacted on June 25, 2012, a copy of which is attached hereto as **Exhibit 1**, and hereby adopts said new legal description and plat as the official legal description and plat to be adopted by the City for all purposes when referencing this prior annexation.


SECTION 2. This new legal description as prepared by Nathan King a Licensed Professional Land Surveyor No.3831 is attached hereto as **Exhibit A** labeled "*Resolution for Original Ordinance 2012-04*". The Plat is attached as **Exhibit B** on plat labeled "RESOLUTION PLAT DEPICTING Original Ordinance 2012-04" as prepared by Nathan King, KWM Engineering & Land Surveying dated February 25, 2019.

Adopted by a vote of 6 in favor 0 against, 0 abstentions this 11th day of March, 2019.



HON GARY D. CRENSHAW
MAYOR

ATTEST:

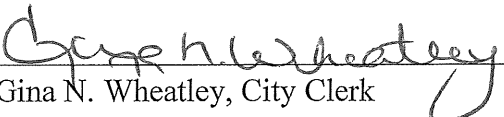


GINA NICOLE WHEATLEY
CITY CLERK

CERTIFICATION

I, the undersigned, being duly appointed, qualified and acting as the Clerk of the City of Lebanon, Kentucky, do hereby certify that, the foregoing Resolution 2019-03 is a true and correct copy as duly and lawfully passed by the City Council of the City of Lebanon at their regular meeting dated March 11, 2019, all as appears in the official records of said City.

WITNESS, my hand and Seal this 11th day of March, 2019.

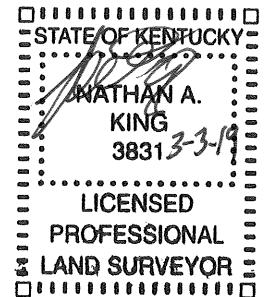

Gina N. Wheatley, City Clerk

KWM

ENGINEERING & SURVEYING, LLC

335 N. WOODLAWN AVE., LEBANON, KY 40033
BUSINESS: (270) 692-0089
MOBILE: (270) 590-4603
kwm.nk@windstream.net

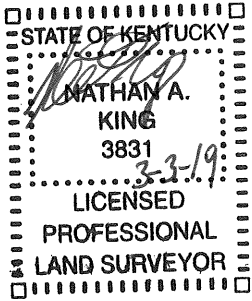
Lebanon, Kentucky Resolution for original Annexation Ordinance 2012-04



Description of a **17.04 +/- Acre** tract located in the State of Kentucky, County of Marion & located adjacent to the west boundary of the City of Lebanon (Ordinance 2012-05) across from and on the west of **KY Highway 2154 (Lebanon ByPass)**, said tract also located adjacent to the north boundary of the City of Lebanon (Ordinance 06-01) across from and on the north side of **U.S. Highway 68**, and on the east boundary of the City of Lebanon (Ordinance 2012-03). This Description is for the corresponding plat titled "Plat Depicting Resolution of Annexation Ordinance 2012-04 City of Lebanon", by Nathan King, KWM Engineering & Land Surveying.

Beginning at a point in the north R/W of U.S. Hwy 68, a corner common to Hilpp's Marion Co. Properties, LLC. (DB 233; PG 669) and opposite said highway of Ordinance 06-01, said point having a Kentucky State Plane Coordinate (KY South - KY 1602) of N: 2,086,003.27, E: 1,775,546.86; THENCE with said R/W and Ordinance, **S61°22'05"W, 101.94'** to a point, a corner common to Bob Gattie (DB 160; PG 705); THENCE leaving said highway and ordinance, with the Gattie line, **N17°25'05"W, 212.17'** to a point; THENCE with same, **S74°27'33"W, 202.50'** to a point, a corner common to Joseph & Margaret Hughes (DB 119; PG 676); THENCE with the Hughes line, **N14°27'03"W, 107.24'** to a point, a corner common to John & Judith Adams (DB 126; PG 127); THENCE with the Adams line, **N15°11'25"W, 619.82'** to a point, a corner common to Nally & Haydon, Inc. (DB 203; PG 700) and Ordinance 2012-03; THENCE with a new line over the Nally & Haydon lands and Ordinance 2012-03, **N62°38'05"E, 50.98'** to a point; THENCE with same, **N29°26'44"W, 197.89'** to a point; THENCE with same, **N57°59'42"E, 176.21'** to a point; THENCE with same, **N00°03'21"W, 460.43'** to a point; THENCE with same, **N15°19'06"W, 537.49'** to a point near Hardin's Creek in the line of Neville Thompson (DB 318; PG 576); THENCE leaving said Annexation Ordinance 2012-03, with the Thompson line, **N63°43'02"E, 191.63'** to a point; THENCE with same, **S81°40'30"E, 42.27'** to a point; THENCE with same, **S59°25'43"E, 94.98'** to a point; THENCE with same, **N87°19'43"E, 230.62'** to a point; THENCE with same, **S09°37'39"E, 160.56'** to a point; THENCE with same, **N88°23'29"E, 267.12'** to a point in the R/W of KY 2154, said point being across said highway from Annexation Ordinance 2012-05; THENCE

with said R/W and Ordinance, S33°34'22"W, 380.14' to a point; THENCE with same, S07°28'37"W, 438.64' to a point; THENCE with same, S84°39'09"W, 51.46' to a point; THENCE with same, S12°48'13"W, 60.00' to a point; THENCE with same, S05°12'43"W, 326.31' to a point, a corner common to said Hilpp's Marion County Properties, LLC.; THENCE leaving said R/W and Annexation Ordinance 2012-05, with the line of said Hilpp's Properties, N89°12'39"W, 315.58' to a point; THENCE with same, S15°16'23"E, 622.83' to a point; THENCE with same, N74°33'46"E, 195.96' to a point; THENCE with same, S17°28'00"E, 288.79' to the POINT OF BEGINNING and Containing **17.04 +/- acres**, as shown on plat by Nathan King, PLS #3831, with KWM Engineering & Land Surveying, on 02/25/2019 titled "PLAT DEPICTING RESOLUTION OF ANNEXATION ORDINANCE #2012-04 CITY OF LEBANON" and being the same property described in the Annexation Ordinance 2012-04 in the records of the Marion County Clerk's office.



for Original Annexation
Ordinance 2012-04

CITY OF LEBANON per
ORDINANCE 2012-03

NALLY & HAYDON, INC.
DB 203; PG 700
CAB. 1; SLIDE 35

UN-INCORPORATED AREA
OF MARION COUNTY

JOHN & JUDITH ADAMS
DB 126; PG 127

UN-INCORPORATED AREA
OF MARION COUNTY

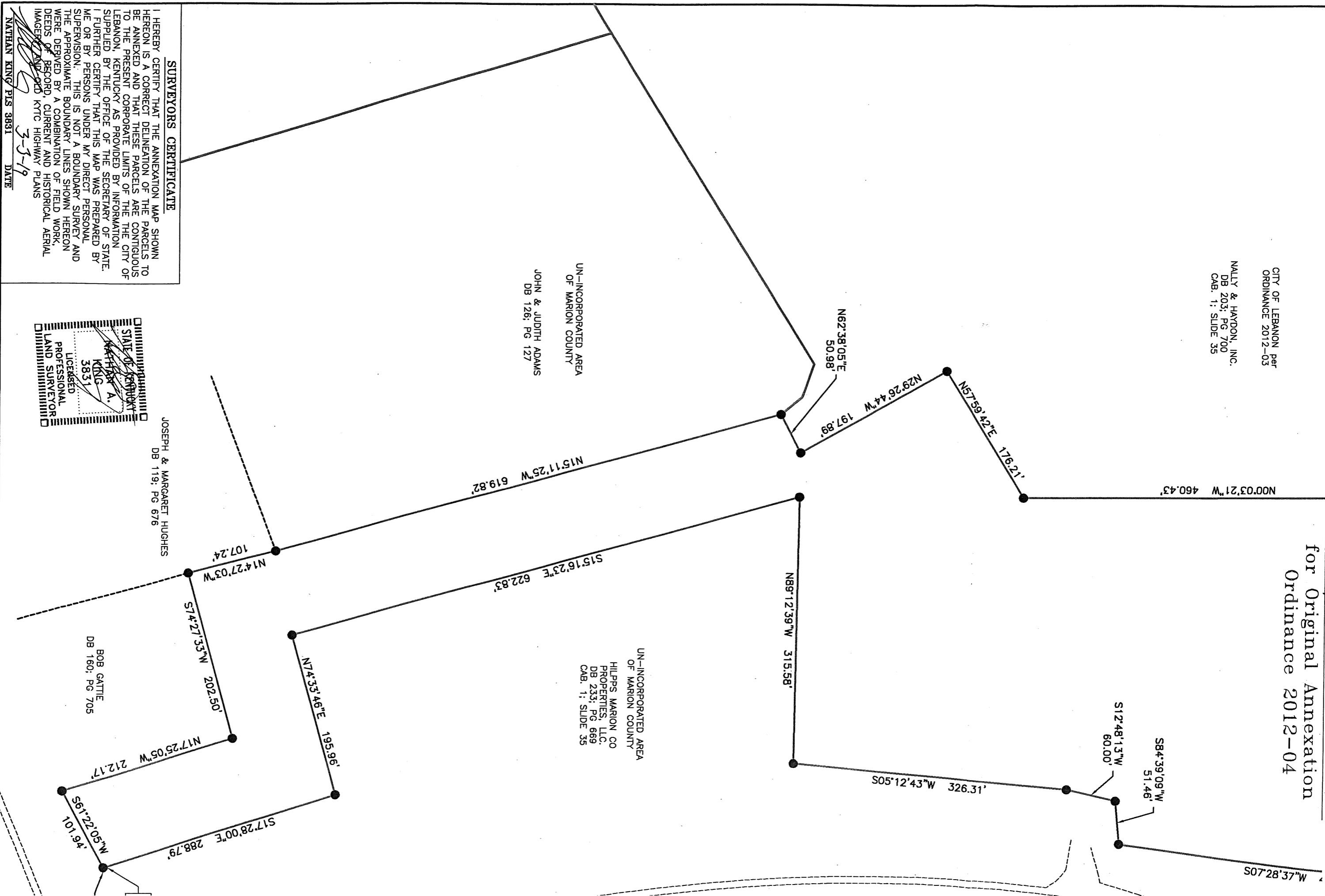
HILLEPS MARION CO
PROPERTIES, LLC.
DB 233; PG 669
CAB. 1; SLIDE 35

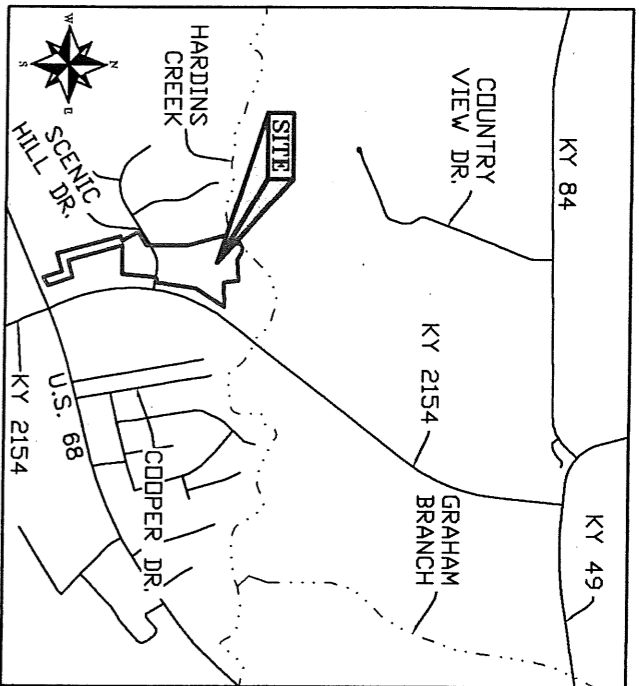
JOSEPH & MARGARET HUGHES
DB 119; PG 676

BOB GATTIE
DB 160; PG 705

SURVEYORS CERTIFICATE
I HEREBY CERTIFY THAT THE ANNEXATION MAP SHOWN
HEREON IS A CORRECT DELINEATION OF THE PARCELS TO
BE ANNEXED AND THAT THESE PARCELS ARE CONTIGUOUS
TO THE PRESENT CORPORATE LIMITS OF THE CITY OF
LEBANON, KENTUCKY AS PROVIDED BY INFORMATION
SUPPLIED BY THE OFFICE OF THE SECRETARY OF STATE.
I FURTHER CERTIFY THAT THIS MAP WAS PREPARED BY
ME OR BY PERSONS UNDER MY DIRECT PERSONAL
SUPERVISION. THIS IS NOT A BOUNDARY SURVEY AND
THE APPROXIMATE BOUNDARY LINES SHOWN HEREON
WERE DERIVED BY A COMBINATION OF FIELD WORK,
DEEDS OF RECORD, CURRENT AND HISTORICAL AERIAL
IMAGERY AND OLD KYTC HIGHWAY PLANS

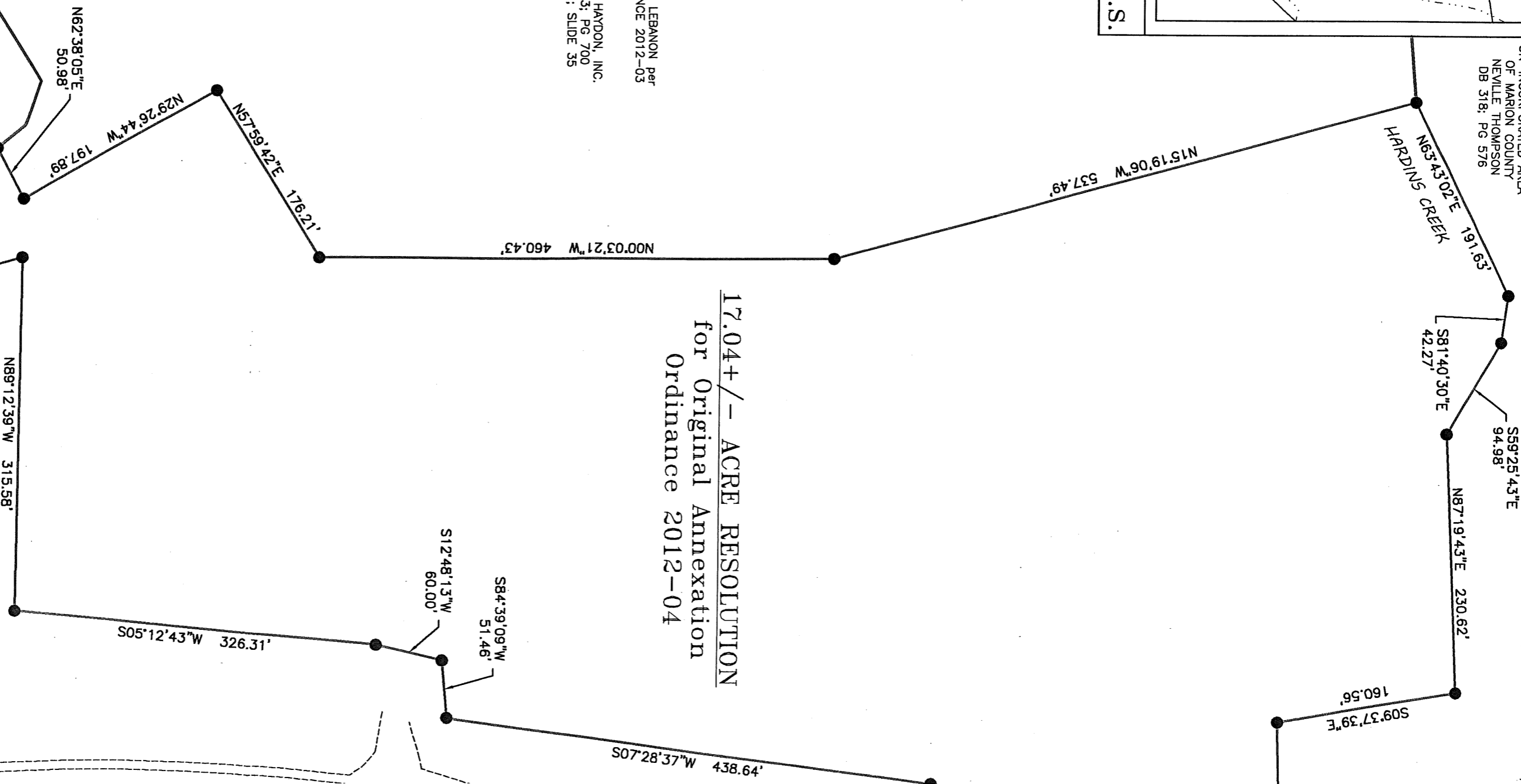
NATHAN KING PLS 3831 DATE 3-3-19





VICINITY MAP N.T.S.

UN-INCORPORATED AREA
OF MARION COUNTY
NEVILLE THOMPSON
DB 318; PG 576



17.04+/- ACRE RESOLUTION
for Original Annexation
Ordinance 2012-04

CITY OF LEBANON Per
ORDINANCE 2012-03

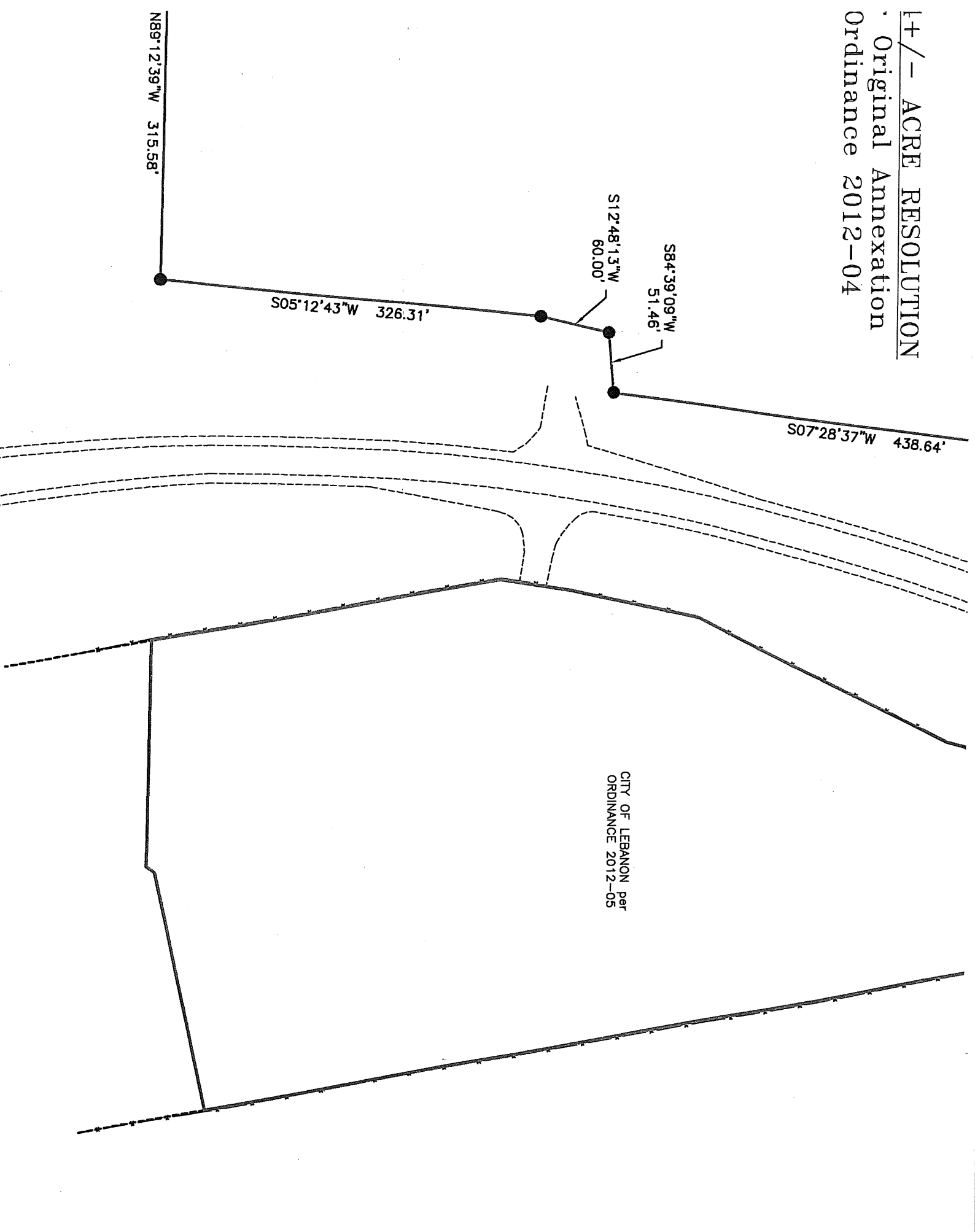
NALLY & HAYDON, INC.
DB 203; PG 700
CAB. 1; SLIDE 35

UN-INCORPORATED AREA
OF MARION COUNTY

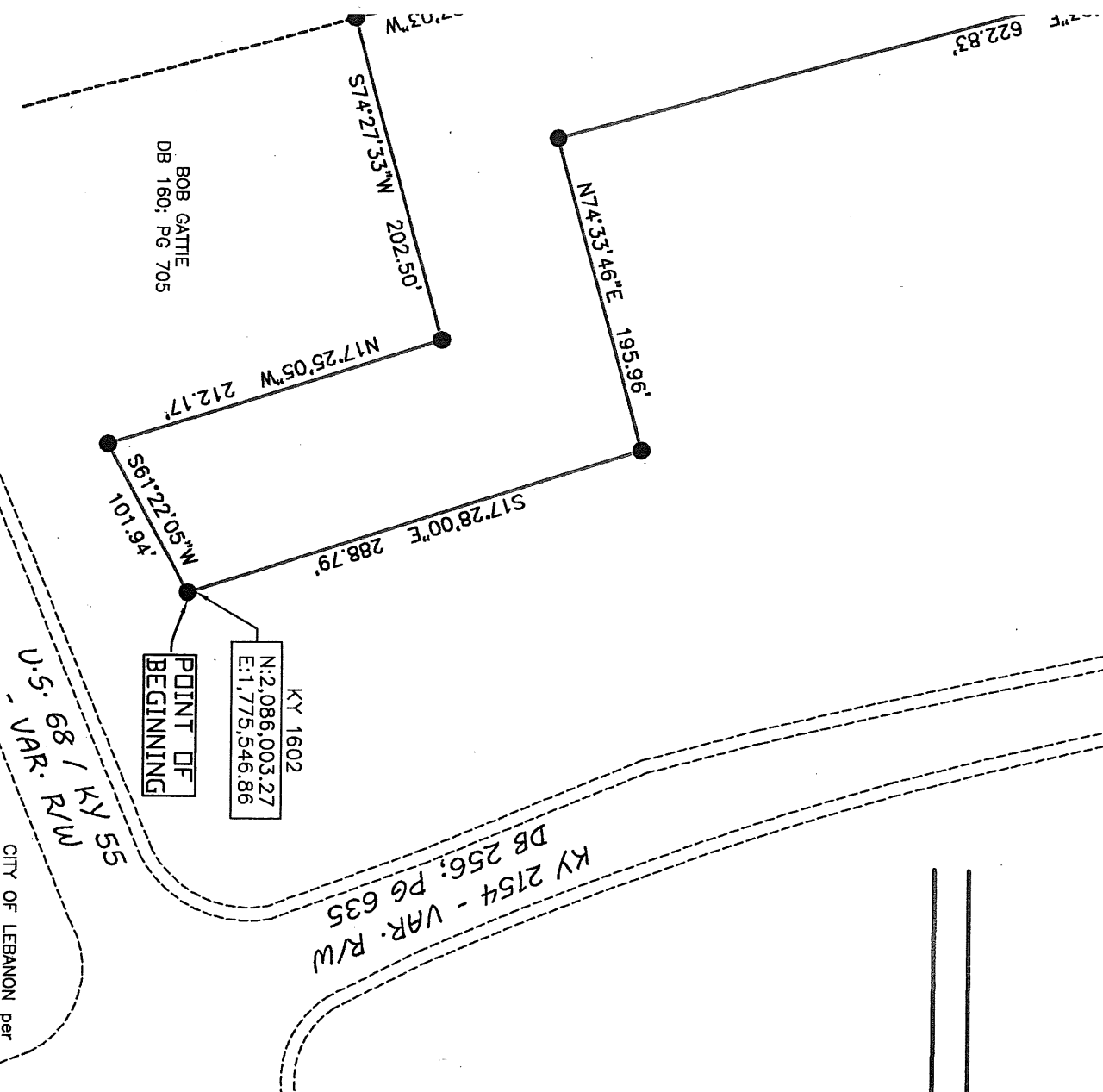
HILPPS MARION CO
PROPERTIES, LLC.
DB 233; PG 669
CAB. 1; SLIDE 35

UN-INCORPORATED AREA
OF MARION COUNTY

1+/- ACRE RESOLUTION
Original Annexation
Ordinance 2012-04



UN-INCORPORATED AREA
OF MARION COUNTY
HILPPS, MARION CO
PROPERTIES, LLC.
DB 233; PG 669
CAB. 1; SLIDE 35



- SURVEY LEGEND**
- = POINT
 - = ANNEXATION LINES: ORDINANCE 2012-04
 - = CITY OF LEBANON EXISTING PERIMETER

GRID NORTH
KY SOUTH ZONE 1602



PLAT DEPICTING RESOLUTION OF
ANNEXATION ORDINANCE #2012-04
CITY OF LEBANON

CLIENT
CITY OF LEBANON
115 S. PROCTOR AVE.
LEBANON, KY 40033

MARION COUNTY, KENTUCKY

K&W
ENGINEERING &
SURVEYING

NATHAN ALLAN KING
P.E. #24283 P.L.S. #3831
335 N. WOODLAWN AVE., LEBANON, KY 40033
BUSINESS (270) 592-0089
MOBILE (270) 590-4603
kwn@kwlandsurvey.net

PROJECT: MARION CO/2015/CITY OF LEBANON/0004

SCALE 1" = 100' INCH=FEET	TOTAL AREA 17.04 AC +/-	DATE 02/25 2019	DRAWN BY N. KING
---------------------------------	-------------------------------	-----------------------	------------------------

CITY OF LEBANON per
ORDINANCE 06-01

KY 2154 - VAR. R/W
DB 256; PG 635

KY 1602
N:2,086,003.27
E:1,775,546.86

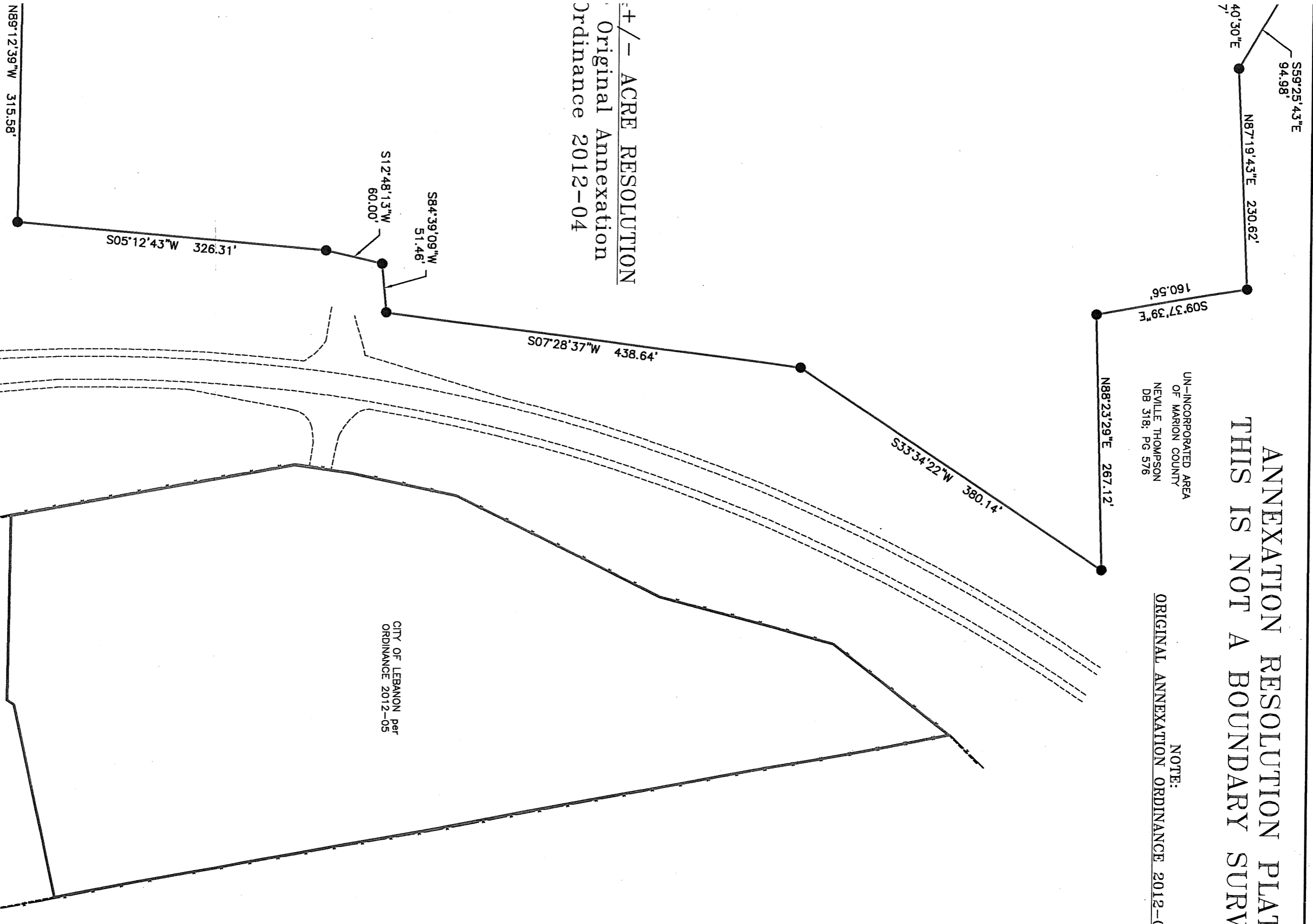
BOB GATTE
DB 160; PG 705

U.S. 68 / R/W
VAR. R/W
KY 55

ANNEXATION RESOLUTION PLAT:
THIS IS NOT A BOUNDARY SURVEY

UN-INCORPORATED AREA
OF MARION COUNTY
NEVILLE THOMPSON
DB 318; PG 576

NOTE:
ORIGINAL ANNEXATION ORDINANCE 2012-04



±/- ACRE RESOLUTION
Original Annexation
Ordinance 2012-04

CITY OF LEBANON per
ORDINANCE 2012-05

UN-INCORPORATED AREA
OF MARION COUNTY