



GARY D. CRENSHAW
MAYOR

CITY OF LEBANON

RECEIVED AND FILED
DATE October 9, 2019

ALISON LUNDERGAN GRIMES
SECRETARY OF STATE
COMMONWEALTH OF KENTUCKY
BY K. Adkinson P.O. BOX 840
LEBANON, KY 40038
TEL. (270) 692-6272
FAX (270) 692-4638

RESOLUTION 2019-11

A RESOLUTION ADOPTING A MODERN AND ACCURATE LEGAL DESCRIPTION OF TERRITORY PREVIOUSLY ANNEXED BY ORDINANCE 08-15

WHEREAS, the City of Lebanon has enacted numerous ordinances annexing property into the corporate limits of the City of Lebanon; and

WHEREAS, each individual annexation contains a prior survey oft prepared by now unknown individual, and further references documentation that is no longer in existence or is no longer easily ascertainable; and

WHEREAS, the City wishes to provide a modern, accurate, easily identifiable legal description reflecting bearings and coordinates based upon the state plane coordinate system, including relevant GPS and GIS data, same having been certified by a professional land surveyor for each prior annexation; and

WHEREAS, the city wishes to comply with the requirements of Amended KRS 81A.470 effective July, 2004; and

WHEREAS, the City does not intend to amend or replace its prior ordinance annexing, but rather to interpret the defined boundaries of the territory previously annexed and adopt a modern and accurate legal description of territory previously annexed.

NOW THEREFORE, BE IT RESOLVED BY THE CITY COUNCIL OF THE CITY OF LEBANON, KENTUCKY:

SECTION 1. That the City Council of the City of Lebanon hereby adopts the following legal description, and a plat attached hereto as prepared by Nathan King, Licensed Professional Land Surveyor No. 3831 by new survey as an accurate depiction of the property previously annexed into the corporate city limits of the City of Lebanon by Ordinance 08-15 enacted on December 22, 2008, a copy of which is attached hereto as **Exhibit 1**, and hereby adopts said new legal description and plat as the official legal description and plat to be adopted by the City for all purposes when referencing this prior annexation.


SECTION 2. This new legal description as prepared by Nathan King a Licensed Professional Land Surveyor No.3831 is attached hereto as **Exhibit A** labeled "*Lebanon, Kentucky Resolution for Original Annexation Ordinance 08-15*". The Plat is attached as **Exhibit B** on plat labeled "PLAT DEPICTING RESOLUTION OF ANNEXATION ORDINANCE #08-15" as prepared by Nathan King, KWM Engineering & Land Surveying dated June 01, 2019.

Adopted by a vote of 6 in favor, 0 against, 0 abstentions this 7th day of October, 2019.



GARY D. CRENSHAW
MAYOR

ATTEST:



GINA NICOLE WHEATLEY
CITY CLERK



CITY OF LEBANON

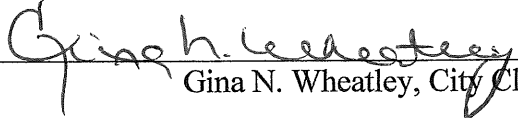
GARY D. CRENSHAW
MAYOR

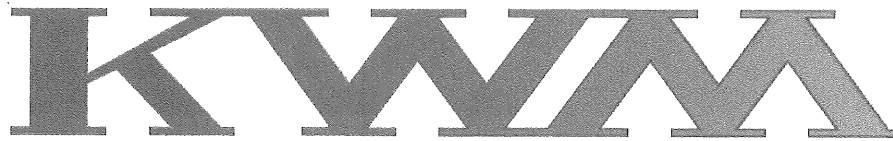
P.O. BOX 840
LEBANON, KY 40033
TEL. (270) 692-6272
FAX (270) 692-4638

CERTIFICATION

I, the undersigned, being duly appointed, qualified and acting as the City Clerk of the City of Lebanon, Kentucky, do hereby certify that the foregoing Resolution No. 2019-11 is a true and correct copy as duly and lawfully passed by the City Council of the City of Lebanon at their regular meeting dated October 7, 2019, all as appears in the official records of said City.

WITNESS, my hand and the City Seal of Lebanon, Kentucky, this 8th day of October, 2019.


Gina N. Wheatley, City Clerk



ENGINEERING & SURVEYING, LLC

335 N. WOODLAWN AVE., LEBANON, KY 40033
BUSINESS: (270) 692-0089
MOBILE: (270) 590-4603
kwm.nk@windstream.net

Lebanon, Kentucky
Resolution for original
Annexation Ordinance 08-15

Description of a 2.34 +/- Acre tract located in the State of Kentucky, County of Marion & located adjacent to the east boundary of the City of Lebanon (per KRS 81.045 filing) and adjacent to Annexation Ordinances 2011-12 and Ordinance 2010-01, including Park Side Drive, a portion of Bradfordsville Hwy (HWY 49), and three residential lots along the northeast side of Hwy 49 addressed as 875, 909, and 925 Bradfordsville Hwy. This Description is for the corresponding plat titled "Plat Depicting Resolution of Annexation Ordinance #08-15 City of Lebanon", by Nathan King, KWM Engineering & Land Surveying.

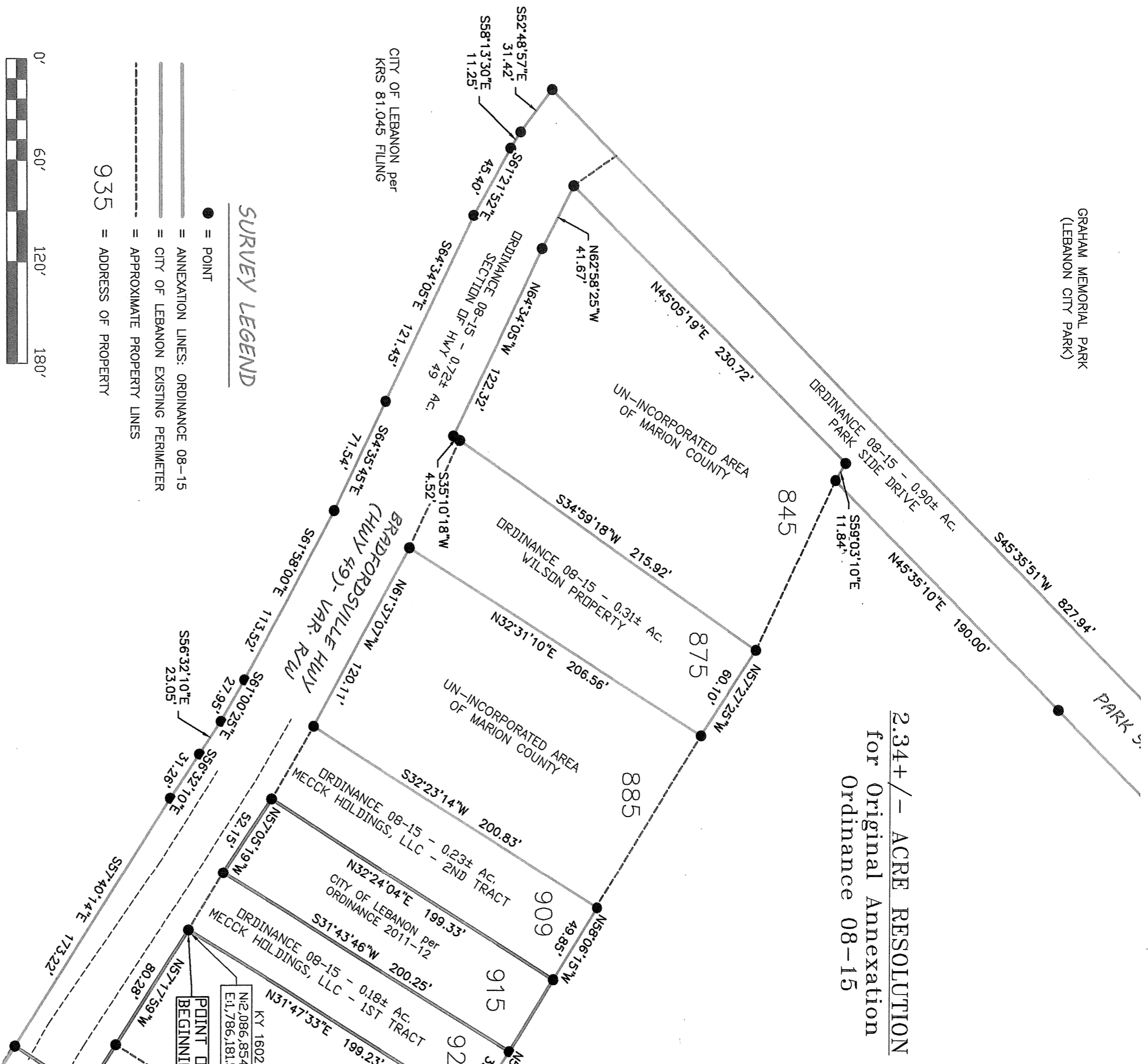
Beginning at a point, said point being the southeast corner of the lot addressed as 925 Bradfordsville Hwy, a corner of the City of Lebanon (Ordinance 2010-01) and the right-of-way of Bradfordsville Hwy (Hwy 49), said point having a Kentucky State Plane Coordinate (KY South - KY 1602) of N: 2,086,854.78, E: 1,786,181.59; THENCE leaving Hwy 49 with Annexation Ordinance 2010-01 N31°47'33"E, 199.23' to a point at the northwest corner of Ordinance 2010-01 and along an un-incorporated area of Marion County; THENCE leaving Ordinance 2010-01 with an un-incorporated area of Marion County, N57°16'28"W, 39.83' to a point at the northeast corner of the City of Lebanon Annexation Ordinance 2011-12; THENCE leaving the un-incorporated area of Marion County with Ordinance 2011-12 S31°43'46"W, 200.25' to a point along the northeast right-of-way of Hwy 49; THENCE with the northeast right-of-way of Hwy 49 and continuing with Ordinance 2011-12, N57°05'19"W, 52.15' to a point; THENCE leaving Hwy 49 and continuing with Ordinance 2011-12, N32°24'04"E, 199.33' to a point in the northwest corner of Ordinance 2011-12 and an un-incorporated area of Marion County; THENCE leaving Ordinance 2011-12 with an un-incorporated area of Marion County, N58°06'15"W, 49.85' to a point; THENCE with same, S32°23'14"W, 200.83' to a point in the northeast right-of-way of Hwy 49; THENCE with the northeast right-of-way of Hwy 49, N61°37'07"W, 120.11' to a point; THENCE leaving Hwy 49 and continuing with an un-incorporated area of Marion County, N32°31'10"E, 206.56' to a point; THENCE with same, N57°27'25"W, 60.10' to a point; THENCE with same, S34°59'18"W, 215.92' to a point in the northeast right-of-way of Hwy 49; THENCE with the northeast right-of-way of Hwy 49

S35°10'18"W, 4.52' to a point; THENCE with same N64°34'05"W, 122.32' to a point; THENCE with same, N62°58'25"W, 41.67' to a point in the southeast intersection of the rights-of-way of Hwy 49 and Park Side Drive; THENCE leaving Hwy 49 with the southeast right-of-way of Park Side Drive, N45°05'19"E, 230.72' to a point; THENCE with same, S59°03'10"E, 11.84' to a point; THENCE with same, N45°35'10"E, 190.00' to a point; THENCE with same, N45°35'42"E, 356.53' to a point; THENCE with same, N51°23'09"E, 253.98' to a point at the end of Park Side Drive; THENCE crossing the end of Park Side Drive, N39°16'07"W, 42.57' to a point in the south east boundary of the City of Lebanon (per KRS 81.045 filing), the southeast side of Graham Memorial Park, and the northwest side of Park Side Drive; THENCE with the south east boundary of the City of Lebanon (per KRS 81.045 filing), the southeast side of Graham Memorial Park, and the northwest side of Park Side Drive, S50°43'53"W, 259.49' to a point; THENCE with same, then across Hwy 49, S45°35'51"W, 827.94' to a point on the southwest right-of-way of Hwy 49; THENCE leaving Graham Memorial Park and park Side Drive with the southwest right-of-way of Hwy 49, S52°48'57"E, 31.42' to a point; THENCE with same S58°13'30"E, 11.25' to a point; THENCE with same, S61°21'52"E, 45.40' to a point; THENCE with same, S64°34'05"E, 121.45' to a point; THENCE with same, S64°35'45"E, 71.54' to a point; THENCE with same, S61°58'00"E, 113.52' to a point; THENCE with same, S61°00'25"E, 27.95' to a point; THENCE with same, S56°32'10"E, 23.05' to a point; THENCE with same, S56°32'10"E, 31.26' to a point; THENCE with same, S57°40'14"E, 173.22' to a point in the City of Lebanon per Ordinance 2010-01; THENCE crossing Hwy 49 with Ordinance 2010-01, N32°47'33"E, 50.00' to a point in the northeast right-of-way of Hwy 49; THENCE with the northeast right-of-way of Hwy 49 and with Ordinance 2010-01 N56°54'07"W, 33.01' to a point; THENCE with same, N57°17'59"W, 80.28' to the POINT OF BEGINNING and Containing **2.34 +/- acres**, as shown on plat by Nathan King, PLS #3831, with KWM Engineering & Land Surveying, on 06/01/2019 titled "PLAT DEPICTING RESOLUTION OF ANNEXATION ORDINANCE #08-15 CITY OF LEBANON" and being the same property described in the Annexation Ordinance 08-15 in the records of the Marion County Clerk's office.



GRAHAM MEMORIAL PARK
(LEBANON CITY PARK)

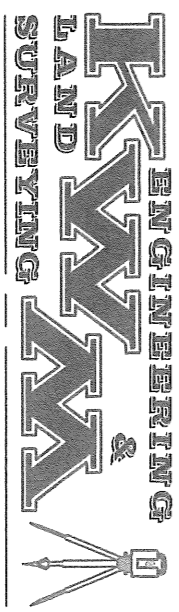
2.34+/- ACRE RESOLUTION
for Original Annexation
Ordinance 08-15



PLAT DEPICTING RESOLUTION OF
ANNEXATION ORDINANCE #08-15
CITY OF LEBANON

CLIENT
CITY OF LEBANON
115 S. PROCTOR AVE.
LEBANON, KY 40033

MARION COUNTY, KENTUCKY



LEBANON OFFICE:
NATHAN ALLAN KING
P.E. #24283 P.L.S. #3831
335 N. VIDDAL AVE., LEBANON, KY 40033
BUSINESS: 627.692-0089
MOBILE: 627.590-4603
kwn@k&wlandsurveying.net

PROJECT: MARION CO/2015/CITY OF LEBANON/0004	TOTAL AREA	DATE	DRAWN BY
SCALE 1" = 60'	2.34 AC. +/-	06/01 2019	J.A.
INCH=FEET			FOLLOWELL

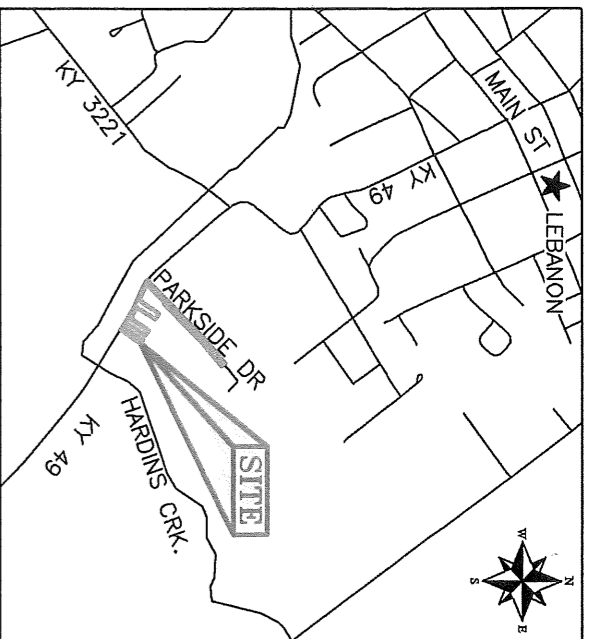
GRID NORTH
KY SOUTH ZONE 1602

SURVEYORS CERTIFICATE

I HEREBY CERTIFY THAT THE ANNEXATION MAP SHOWN HEREON IS A CORRECT DELINEATION OF THE PARCELS TO BE ANNEXED AND THAT THESE PARCELS ARE CONTIGUOUS TO THE PRESENT CORPORATE LIMITS OF THE CITY OF LEBANON, KENTUCKY AS PROVIDED BY INFORMATION SUPPLIED BY THE OFFICE OF THE SECRETARY OF STATE. I FURTHER CERTIFY THAT THIS MAP WAS PREPARED BY ME OR BY PERSONS UNDER MY DIRECT PERSONAL SUPERVISION. THIS IS NOT A BOUNDARY SURVEY AND THE APPROXIMATE BOUNDARY LINES SHOWN HEREON WERE DERIVED BY A COMBINATION OF FIELD WORK, IMAGERY, AND DEEDS OF RECORD, CURRENT AND HISTORICAL AERIAL IMAGERY, AND DEEDS OF RECORD.

NATHAN KING PLS 3831 DATE

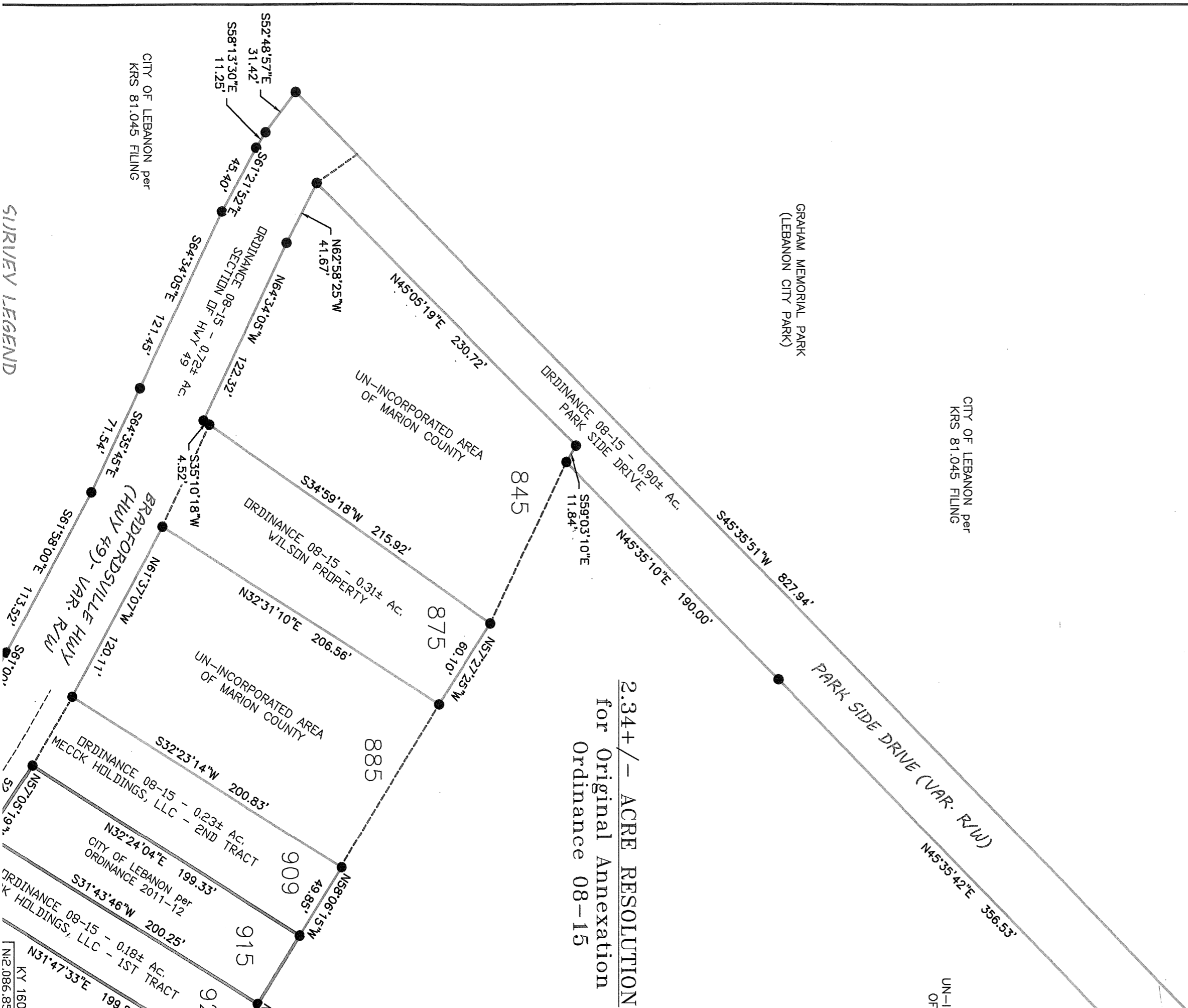




VICINITY MAP N.T.S.

ANNEXATION RESOLUTION PLAT:
THIS IS NOT A BOUNDARY SURVEY

NOTE:
ORIGINAL ANNEXATION ORDINANCE 08-15
KNOWN AS THE LOTS ADDRESSED AS 875, 909 & 926
BRADFORDSVILLE HWY, ALL OF PARK SIDE DRIVE, AND
A PORTION OF BRADFORDSVILLE HWY (HWY 49) R/W



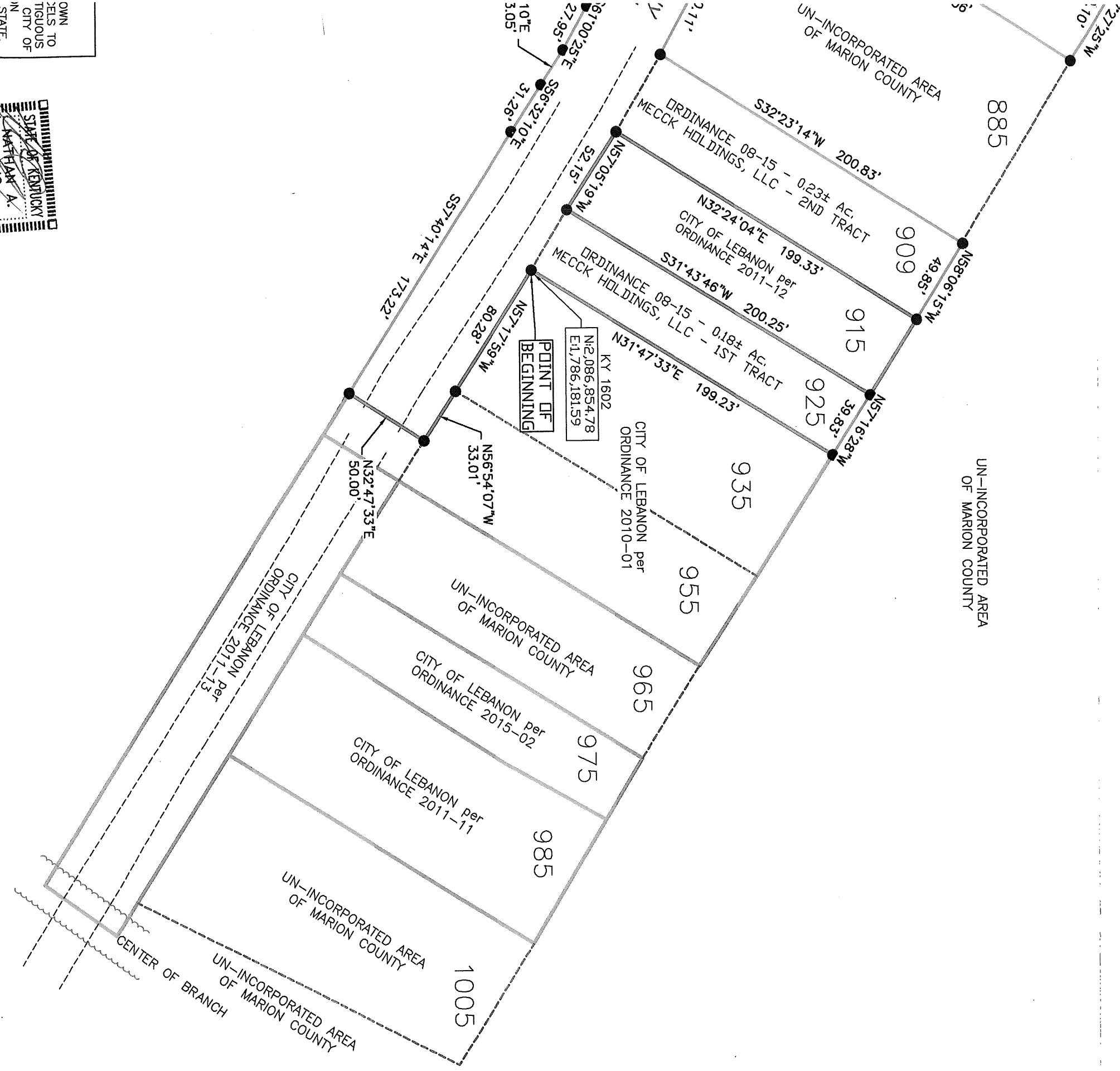
2.34+/- ACRE RESOLUTION
for Original Annexation
Ordinance 08-15

SURVEY LEGEND

KY 160
[N2.086.85]

PARK SIDE DRIVE (

2.34+/- ACRE RESOLUTION
for Original Annexation
Ordinance 08-15

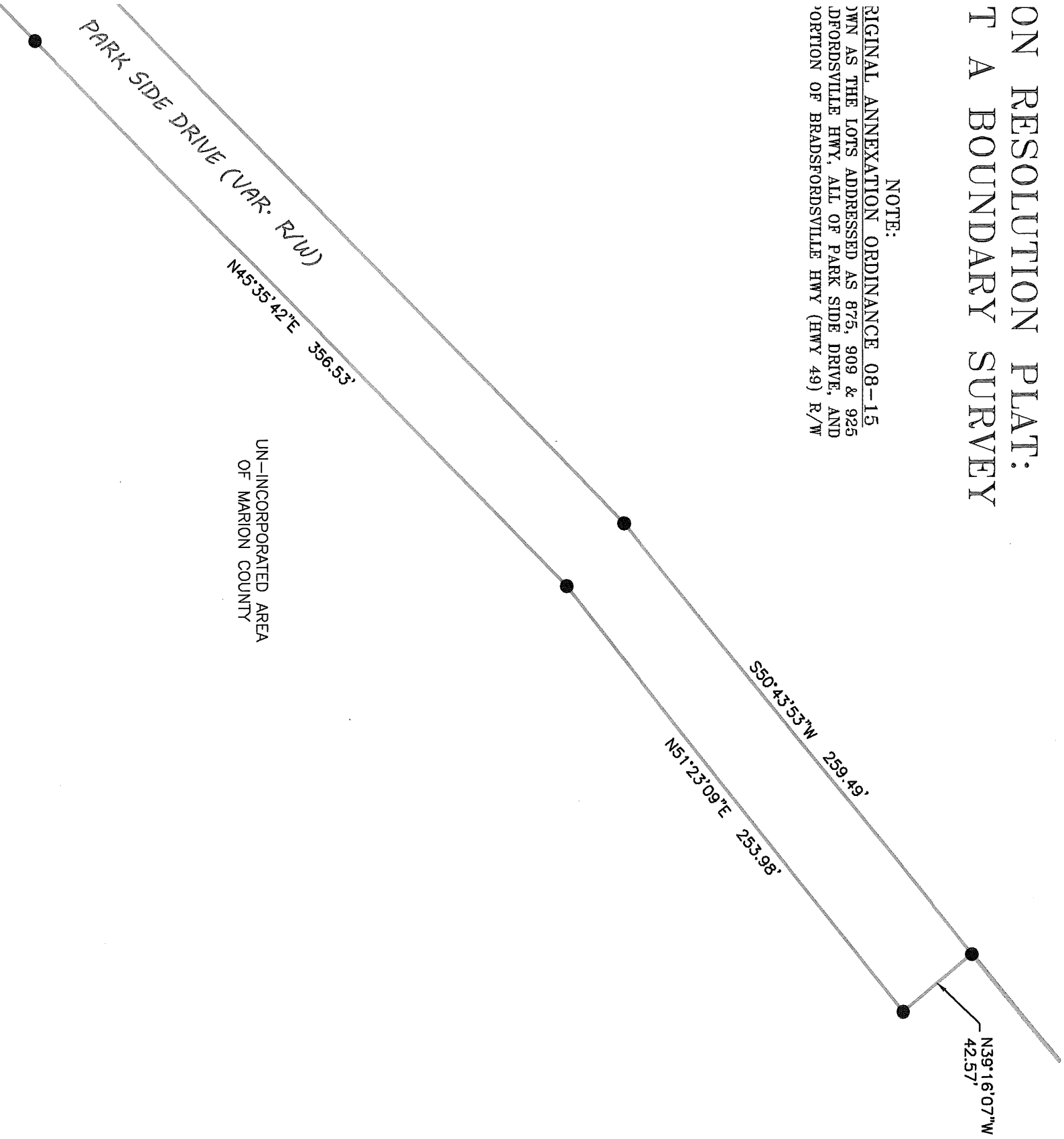


MATTHIAS A. KING
3827
LICENSED PROFESSIONAL LAND SURVEYOR
STATE OF KENTUCKY

OWN
ELS TO
TIGUOUS
CITY OF
N STATE,
D BY
AND
ON
S
RIAL

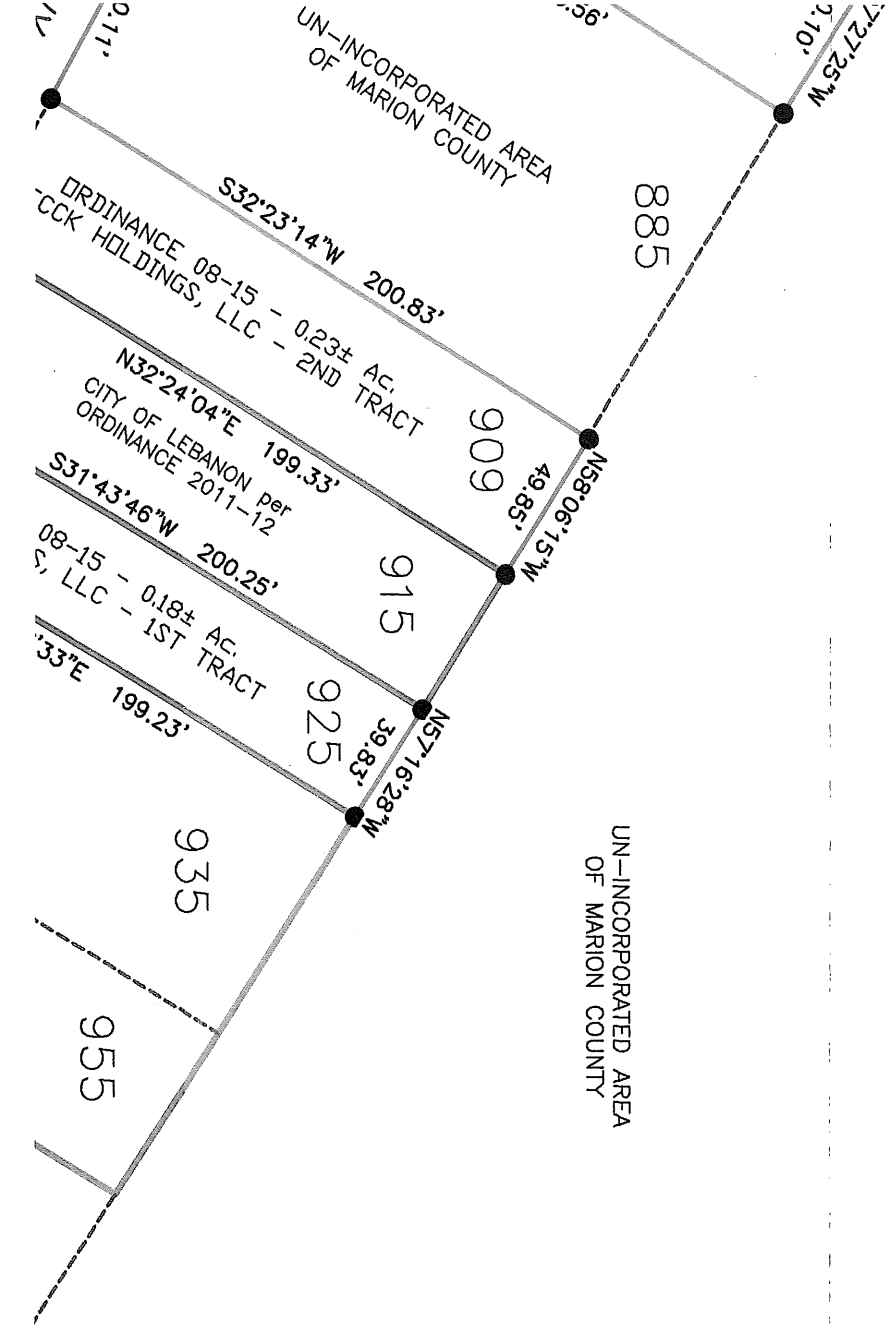
ON RESOLUTION PLAT: T A BOUNDARY SURVEY

NOTE:
ORIGINAL ANNEXATION ORDINANCE 08-15
OWN AS THE LOTS ADDRESSED AS 875, 909 & 925
DORFSDVILLE HWY, ALL OF PARK SIDE DRIVE, AND
PORTION OF BRADFORDSVILLE HWY (HWY 49) R/W



UN-INCORPORATED AREA
OF MARION COUNTY

2.34+/- ACRE RESOLUTION for Original Annexation Ordinance 08-15



UN-INCORPORATED AREA
OF MARION COUNTY

UN-INCORPORATED AREA
OF MARION COUNTY

ORDINANCE 08-15 - 0.23± AC.
CCK HOLDINGS, LLC - 2ND TRACT

N32°24'04"E 199.33'
CITY OF LEBANON Per
ORDINANCE 2011-12

S31°43'46"W 200.25'
08-15 - 0.18± AC.
S, LLC - 1ST TRACT

N57°16'28"W 39.83'
S33°E 199.23'